

# Tahoe National Forest 2018 Update



# Tahoe National Forest





# **What's happening on the Tahoe National Forest in 2018?**

## Van Norden Meadow (Nevada and Placer ) Acquisition

- 732 acre parcel.
- Potential for meadow restoration and recreation.
- Canary Reed Grass may need to be evaluated and/or treated before meadow restoration occurs.



## Pendola Property (Castle Valley) Acquisition

- 412 acre parcel.
- Potential four-season trailhead.
- Could provide staging for snowmobiles, XC/BC skiers, mountain bikers, hikers, equestrians, etc.



# Loney Meadow Project

- Meadow restoration completed with SYRCL Fall 2017. Minor trail restoration and monitoring activities are planned for this summer.



# Dry Creek Project

- Watershed component nearly complete. Only three watershed assessment sites left to accomplish; less than five acres
- All forest health/fuels units under contract; 40% of units complete. NFF and TRWC to fund hand thinning and piling with a WCB grant in 2018.



Before Restoration



After Restoration

# Bowman Road

- Repaired the Bowman Road sinkhole that appeared in spring of 2017
- Approximate \$250,000 project to replace the Bowman Rd low water crossing at Canyon Creek will occur in Fall 2018.







# Prescribed Fire and Fuels

Western Nevada County Community Defense Project  
(WNCCDP)

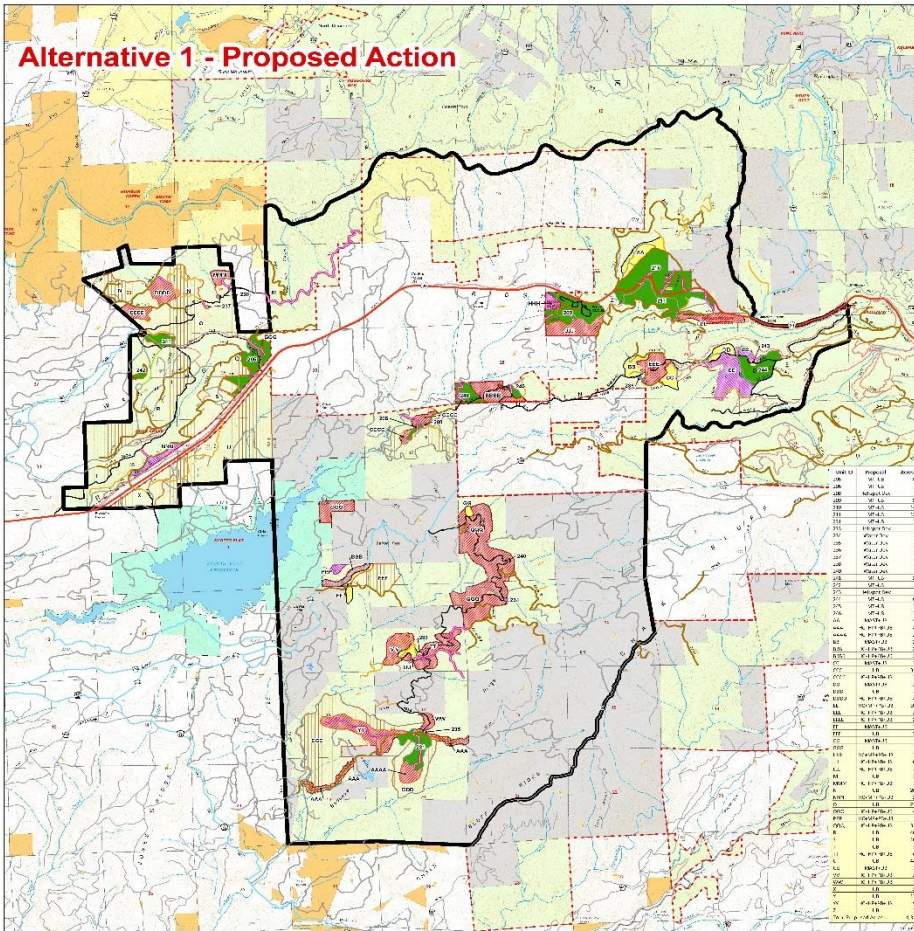


**Above: Before burning**

**Below: Actual burning**



# Western Nevada County Community Defense Project- Deer Creek



<p><b>Deer Creek Alternative 1 - Proposed Action</b></p> <ul style="list-style-type: none"> <li><span style="color: red;">■</span> Hand Cut + Hand Piles + Burn Piles + Underburn</li> <li><span style="color: purple;">■</span> Hand Cut + Machine Pile + Burn Piles + Underburn</li> <li><span style="color: yellow;">■</span> Hotspot Development</li> <li><span style="color: orange;">■</span> Masticate + Underburn</li> <li><span style="color: green;">■</span> Mechanical Thin + Underburn</li> <li><span style="color: lightblue;">■</span> Underburn</li> <li><span style="color: blue;">■</span> Water Div</li> <li><span style="color: blue;">—</span> WNCDDP Proposed Transportation Changes</li> </ul>	<p><b>WNCDDP Transportation</b></p> <ul style="list-style-type: none"> <li><span style="color: blue;">—</span> County (NFRA)</li> <li><span style="color: red;">—</span> Decommissioned (NFRA)</li> <li><span style="color: orange;">—</span> Highway (NFRA)</li> <li><span style="color: yellow;">—</span> NFS Closed (ML-1 NFRA)</li> <li><span style="color: green;">—</span> NFS Lint Rd (ML-2 INF-HA)</li> <li><span style="color: brown;">—</span> NFS Improved Rd (ML-21 NFRA)</li> <li><span style="color: grey;">—</span> NFS Old Trail (NFRA)</li> <li><span style="color: lightblue;">—</span> Other (NFRA)</li> <li><span style="color: lightgreen;">—</span> Other (Non-NFRA)</li> <li><span style="color: lightyellow;">—</span> Other (Non-NFRA)</li> <li><span style="color: lightpurple;">—</span> Private (NF-HA)</li> <li><span style="color: lightgrey;">—</span> State (NF-HA)</li> </ul>	<p><b>Surface Ownership</b></p> <ul style="list-style-type: none"> <li><span style="color: lightgrey;">■</span> Tahoe NF</li> <li><span style="color: lightblue;">■</span> Other / Private</li> <li><span style="color: lightgreen;">■</span> Private</li> <li><span style="color: lightyellow;">■</span> Private TAN Boundary</li> <li><span style="color: lightpurple;">■</span> NFS Lands</li> <li><span style="color: lightgrey;">■</span> NFS Lands</li> <li><span style="color: lightblue;">■</span> State Lands</li> </ul> <p> <span style="color: blue;">—</span> Intermittent Stream  <span style="color: lightblue;">—</span> Perennial Stream  <span style="color: lightblue;">■</span> Lake                 </p> <p> <span style="border: 1px solid black; display: inline-block; width: 10px; height: 10px;"></span> Project Boundary  <span style="border: 1px dashed black; display: inline-block; width: 10px; height: 10px;"></span> Project Boundary  <span style="border: 1px solid black; display: inline-block; width: 10px; height: 10px;"></span> County Boundary                 </p>
---	--	---

North Arrow

Scale: 7:24,000

1 Mile

USDA

# WNCCDP

- This project area lies adjacent to the communities of Grass Valley, Nevada City, and Cascade Shores, focusing primarily on the areas north and east of Scott's Flat Reservoir.

## WNCCDP

- Since October 2017, the TNF has treated over 173 acres with prescribed fire in the Buckeye and Madrone Springs area.
- Focus for 2018 will be the Deer Creek unit (fuel reduction timber sale).
- Work being funded from multiple sources (FS, SNC, NFWF) and in partnership with Nevada County Fire Safe Council



← Pictured here, hand ignition with drip torch on Hwy 20 near Washington Ridge.



# **New Trails and Trail Planning:**

- **Hoot Trail**
- **Pines to Mines**
- **Verdi Range Trail System**
- **Hole in the Ground**

# Hoot Trail

- 1.4 miles of new mountain bike/equestrian trail.
- Constructed with support from equestrian and mountain bike groups.
- Has become very popular with locals as well as a destination



Constructing  
the Hoot Trail.



# Pines to Mines

- Conceptual, trans-sierra non-motorized multiple-use route.
- Planning viable route options with multiple partners in 2018.



# Verdi Range Trail System

- **Summer 2018: final season of trail layout and environmental surveys.**
- **Both Sierra and Nevada Counties. Verdi Range above Boca and Stampede.**
- **Will add over 50+ miles of multiple use (motorized and non-motorized) single track trail.**



View from  
potential trail  
on Verdi  
Range.



# Hole in the Ground

- Existing Hole in the Ground Trail is 7+ miles. Trail is one-way and requires a shuttle.
- 2018: second season of environmental surveys/planning for additional 6+ miles of trail creating multiple loop options.



Hole in the Ground extension: keeping with the rugged, cross-country mountain bike experience





# Tahoe National Forest (TNF) Campground Operations





# **2018 Campground Updates:**

- **2017 storm damage clean up, repair, and hazard tree removal.**
- **Highway 20 corridor campgrounds will open by Memorial Day Weekend. Boca-Stampede reservoir area campgrounds will open mid-May.**
- **Environmental education programs.**

## 2018 Nevada and Placer Counties RAC Projects Approved in Nevada County

Project Name	County	Sponsor Name	RAC Approved Funding 9/25/17
White Cloud Food Lockers	Nevada	Yuba River Ranger District	\$5,100
Loney Meadow Restoration Project	Nevada	South Yuba River Citizens League (SYRCL)	\$18,196
Prosser Roads Improvements and Restoration	Nevada	Truckee River Watershed Council	\$9,880
Johnson Canyon Restoration	Nevada	Truckee River Watershed Council	\$40,000
Hole in the Ground Trail Maintenance & Reconstruction	Nevada	Truckee Ranger District	\$7,000
Donner Summit North Trails Maintenance	Nevada	Truckee Ranger District	\$17,640
		TOTAL:	\$97,816

**THANK YOU!**

