

JUL 12 2022

NEVADA COUNTY
BOARD OF SUPERVISORS

Comment to the Board of Supervisors, July 12, 2022

Hi, I'm Jim Bair ([REDACTED] Grass Valley). My team has had the opportunity to present our analysis of the Rise Gold Mine Economic Impacts Report to Supervisors Hoek and Hall (thank you!) and **this** is 20 pages of the details. **We** are the *Unitarian Community Stop the Mine Task Force* which includes Stanford scientists and corporate executives like myself, accounting managers, professional hydrologist, PhDs in other fields, engineers, etc.

We are faced with a massive challenge: trying to communicate our analysis to Nevada County, while Rise Gold Mine Inc. has an army of consultants and employees financed by public securities investments. Having been a Director of a Public Company, I know that it is relatively easy to raise millions of dollars on the stock market.

The Mine's money has been used to finance attorneys, staff, PR campaigns, investor solicitations, SEC filings, etc. How can we communicate our expert findings on a par with the Mine? The Mine has full access to the County and even has regular (bi-weekly?) meetings between Mine attorneys and the County Planning Dept.

Having been a Planning Commissioner, I know that huge responsibility falls on the Planning Dept. who will ultimately make recommendations to you [the Board]. But since our Community team has found huge exaggerations, distortions and even falsifications in the Mine's Economic Impact Report, (March 2021), shouldn't we present to the Planning Dept.?

My favorite distorted claim is the creation of 312 jobs in our county. But Rise can't require that employees live in the County. They also claim high pay, but it's an average including top management and far more hours worked than 40 hrs. a week. I've lived and hired here for 20 yrs. and owned 3 businesses, and do not believe that 156 deep tunnel mining jobs with 12 hr., 7 days a week shifts, are going to be attractive to residents.

Perhaps most deceptive is the 300 "induced" County jobs. Really? Gold Minor's Inn will need to double its staff? Wendy's will need twice the waiters? Perhaps Yuba Docs will need more nurses because Mining is one of the most dangerous industries in the world. The 300 induced jobs would be low level and part time, and likely non-resident.

Finally, with over 1000 negative DIER Comments, highlighting enormous environmental impacts, the claimed increase in jobs is 0.7% [zero point 7%] of the 46,000 jobs in the County.

We really do need to present our details to all Supervisors and the Planning Dept.

Dangerous Impacts of the Rise Gold Mine v10.1

The Nevada County Board of Supervisors can vote to stop reopening the Idaho-Maryland Gold Mine by Rise Gold Corp. a Canadian Corp. also incorporated in Nevada.

Approval of Rise Gold Corporation's proposal will result in:

- A large, heavy-industry factory on 119 acres on Brunswick Rd. in the middle of hundreds of homes (zoned residential)
- **Crushing and moving 1,500 tons of mine waste every day, all day**, using massive machines
- **Hauling trucks carrying 1,000 tons of waste rock -- 100 round trips every day --** down Brunswick Rd. to a 56-acre location (Centennial toxic dump) less than ½ mile from downtown Grass Valley, piling it higher than a 6-story building
- **Trucks and heavy machinery will produce diesel exhaust from continuous operation**
- **Clouds of mining dust including asbestos** that can move over Grass Valley from digging and dumping 1,500 tons of contaminated waste rock a day
- **Blasting, earth-shaking explosions** 7 days a week in the tunnels under 2,585 acres of the Grass Valley area (including the Hospital) that can be felt inside homes
- **Over 3.5 million gallons per day to start and then 1.2 million gallons per day of waste mine water** dumped into Wolf Creek for the next 80 years
- **12% of Nevada County's electricity will be taken by the Mine, more than all the County businesses combined**

What impacts are predicted if the Mine is approved?

Air pollution will worsen respiratory problems in Grass Valley and probably increase the death rate in Western Nevada County (expert conclusion), especially among the most vulnerable such as the elderly (over 7 hospital & senior care facilities are near the Centennial dump site). (<https://www.minewatchnc.org/post/dr-newsom-on-health-risks-of-mine>)

The South Fork of Wolf Creek will likely have stirred up mercury, toxic residues (like arsenic & lead), and serious erosion.

Real-estate value in the vicinity will drop more than 20% (Realtors' estimate in The Union).

Loss or damage to hundreds of homeowners' wells likely from Mine dewatering.

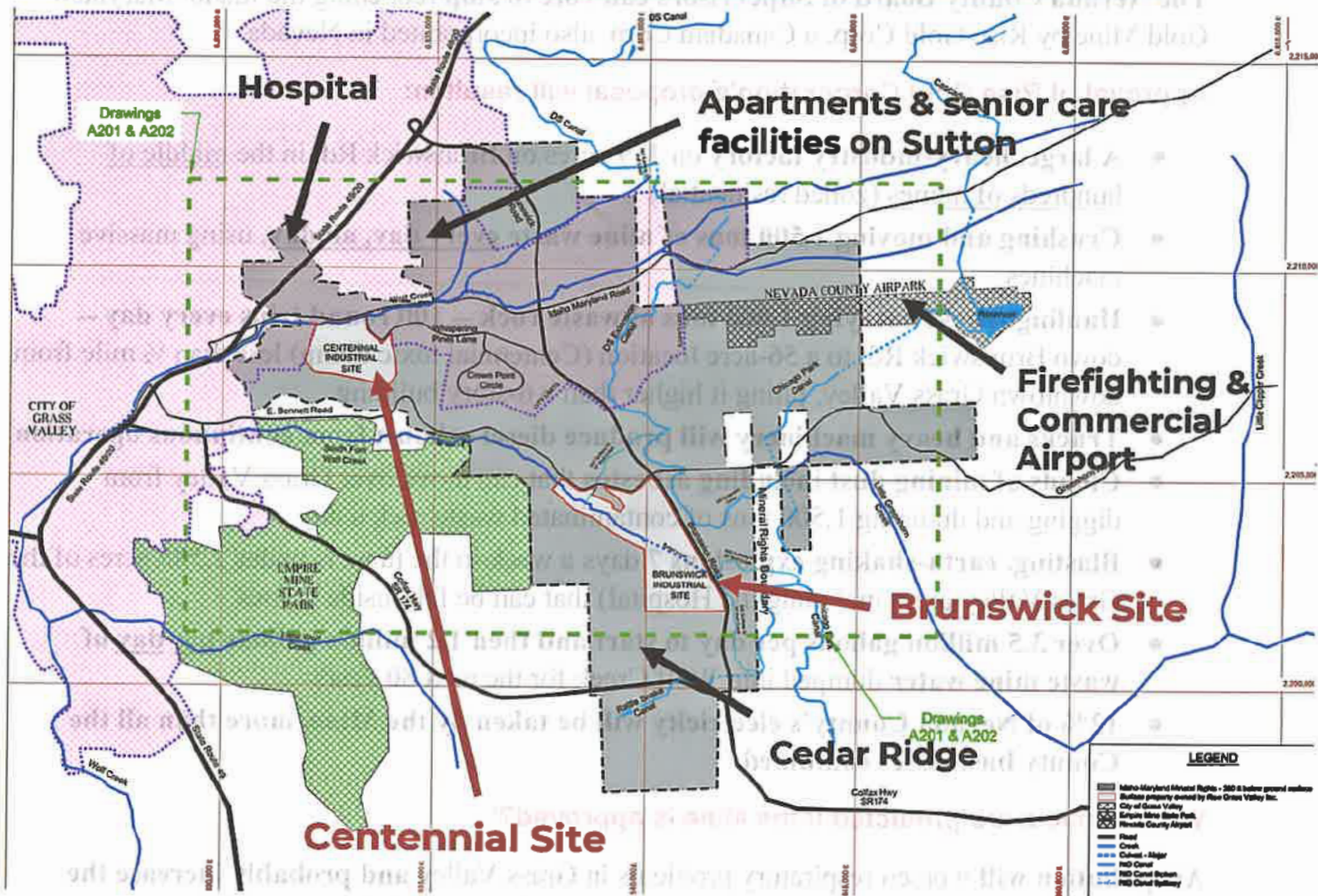
Few local jobs (less than 1% increase) and little tax revenue. See Martin Webb at Minewatchnc.org and *Rise Gold Project Description* p.26 (mynevadacounty.com)

Inadequate regulation because there are not enough government personnel. Based on history, the fixes for damages will not be enforced (<https://www.minewatchnc.org/post/no-state-monitor-for-mine>). Attempts at enforcement have led to legal charges against Rise Mine's predecessor in Canada for failure to clean up their toxic sites are in court.

Sign the petition at www.MineWatchnc.org

Dangerous Impacts of the Rise Gold Mine v10.1

Rise Mine plans map: (Brunswick Site=115 acre industrial center; Centennial=toxic waste dump)



* Grey area is where they can tunnel and blast 24/7 (mining rights)

For the evidence:

Mine Watch website <https://www.minewatchnc.org/> by Community Environmental Advocates Foundation (CEA)

MinewatchNC Mine opposition reasons <https://www.minewatchnc.org/why-stop-the-idaho-maryland-mine>

Martin Webb's talk on energy return-on-investment <https://www.minewatchnc.org/post/energy-roi-we-can-do-better-martin-webb>

Draft Environment Impact Report <https://www.mynevadacounty.com/3436/Idaho-Maryland-Mine-Draft-EIR>

Nevada County document website <https://www.mynevadacounty.com/2882/Application-Documents---Rise-Grass-Valley>

Centennial Site Cleanup Remedial Action Plan - Department of Toxic Substances Control (DTSC)
https://www.envirostor.dtsc.ca.gov/public/community_involvement/1195523917/5279.04%20Draft%20Final%20RAP%2C%20Centennial%20M-1%20Property_1_25_2021.pdf

Library of all articles and letters against the Mine published in The Union: <https://www.minewatchnc.org/blog>

† Dozens of team members contributed to this flyer including the **Elders Action Network, UUCM & CEA.**