

City of Grass Valley 2025 Improving our Community



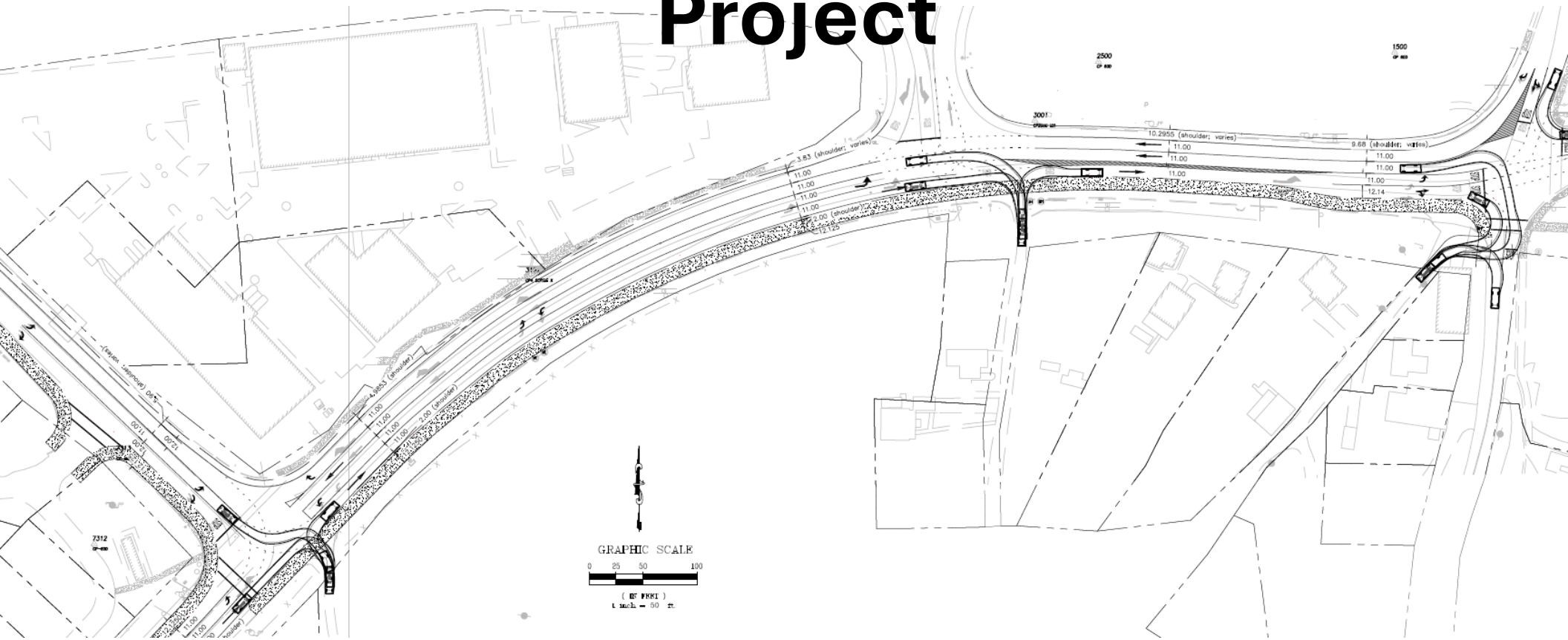
South Auburn/Colfax Ave/Neal Roundabout Project



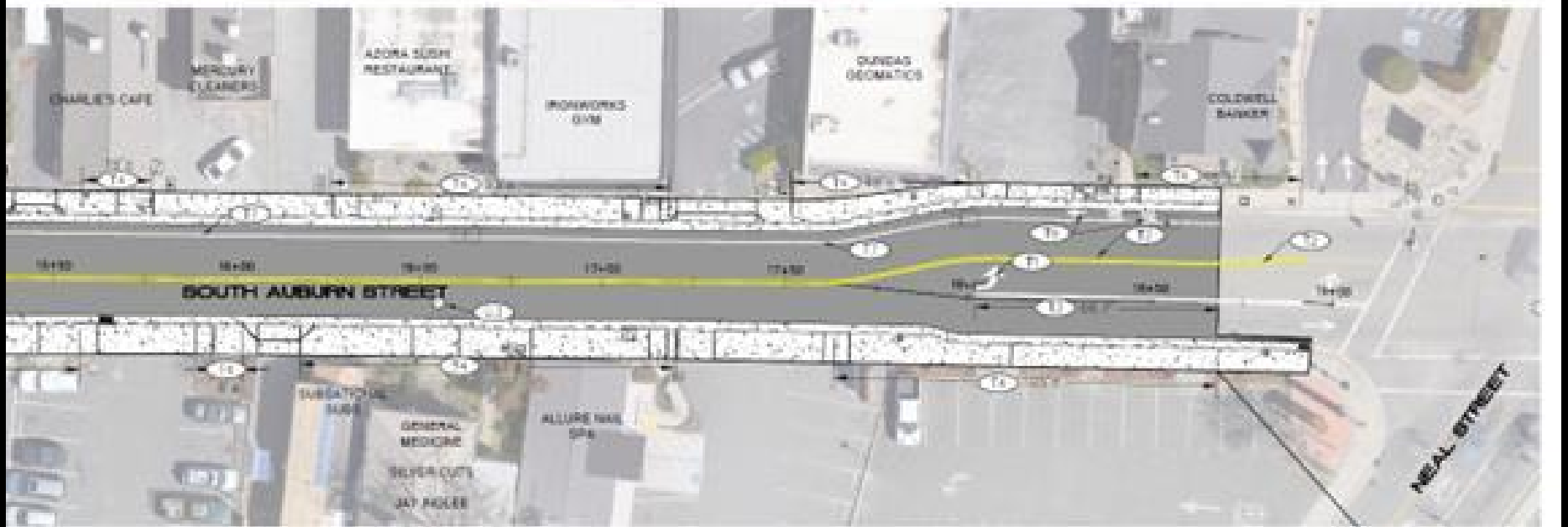
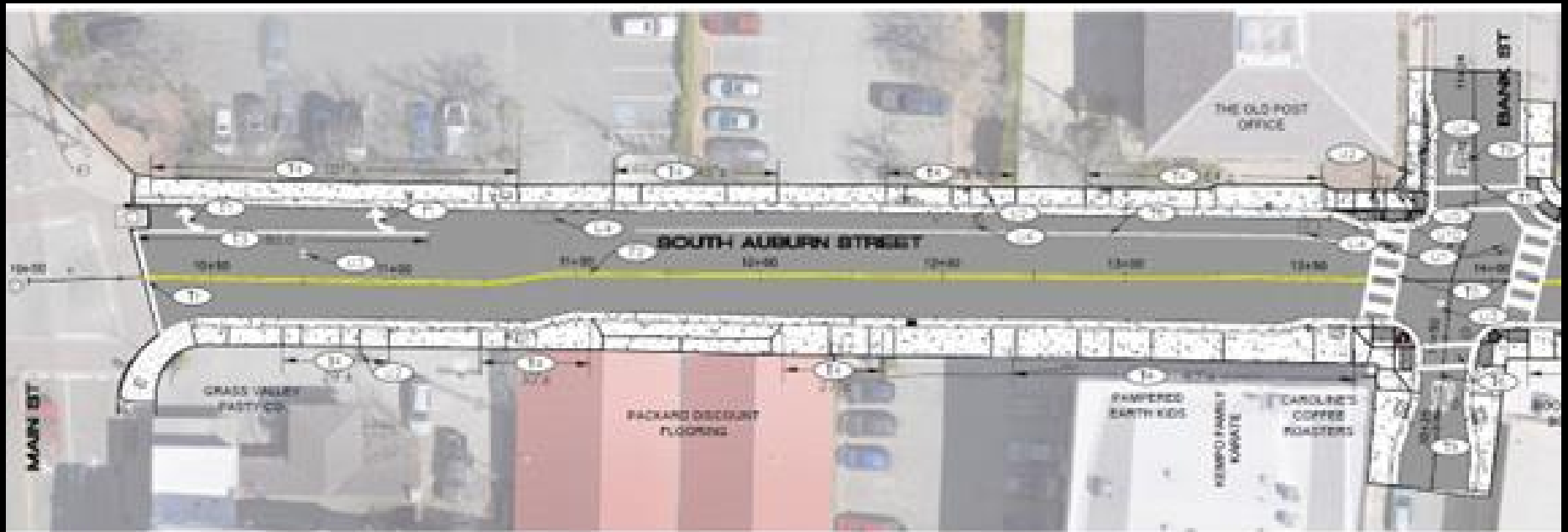
Transportation Projects



McCourtney Road Improvement Project



Transportation Projects



Transportation Projects
South Auburn Reconstruction Project






Wolf Creek Trail



WC Trail Segments

-  Segment 2
-  Segment 3
-  Segment 4
-  Segment 5 & 6

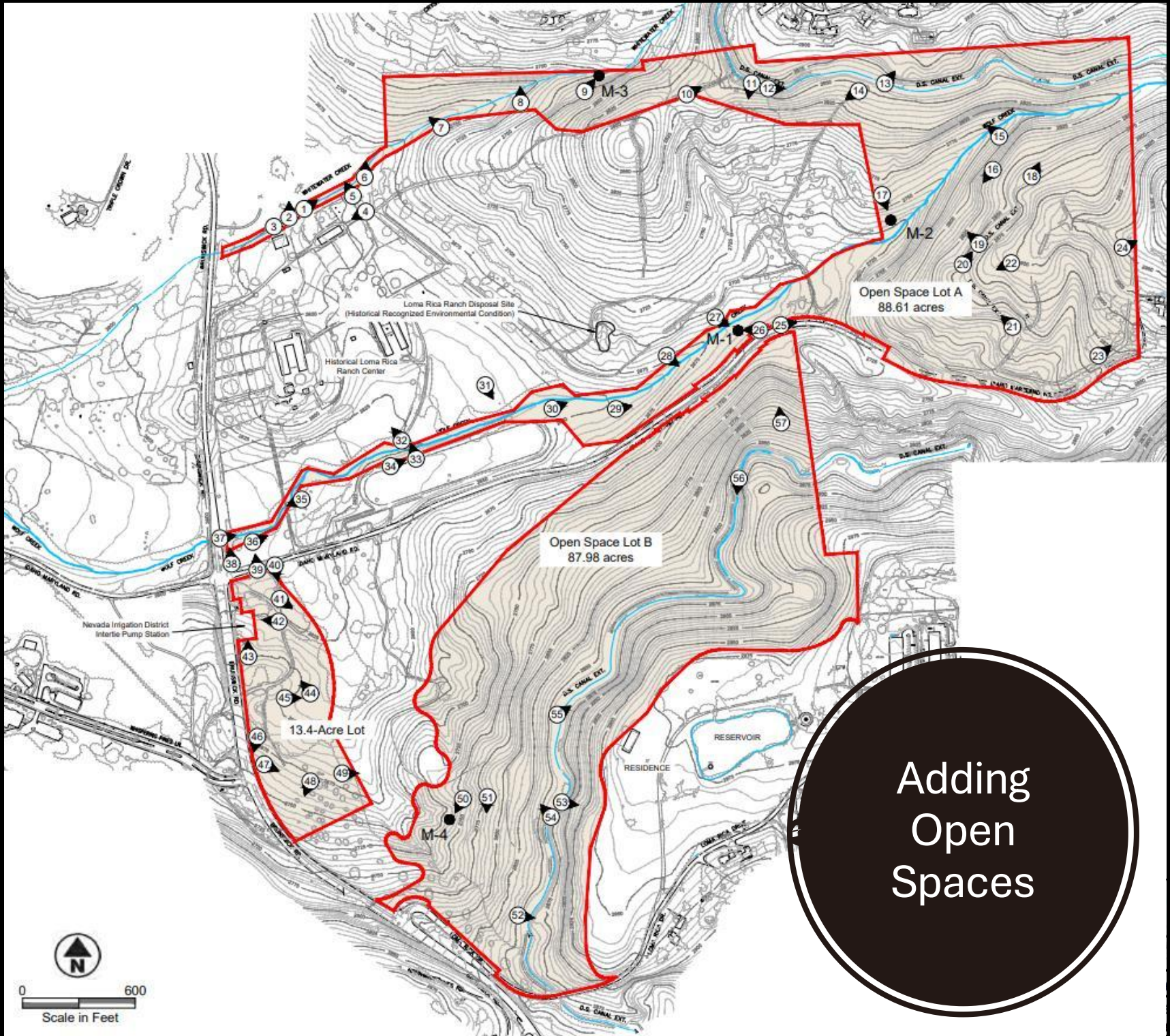
Proposed Trails

-  Preferred Route
-  Trail Access Points
-  Wolf Creek
-  Downtown
-  City Limits

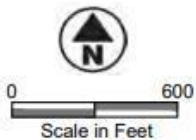
Community Destinations

-  Community Housing
-  Shopping
-  Community Service
-  Transit Stop
-  Library
-  Schools
-  Park
-  Cemetery





Adding
Open
Spaces





Grass Valley Skatepark Concept

Grass Valley Skatepark Concept

Parks Projects – Condon Park

Parks Projects

Idaho Maryland Bike Park



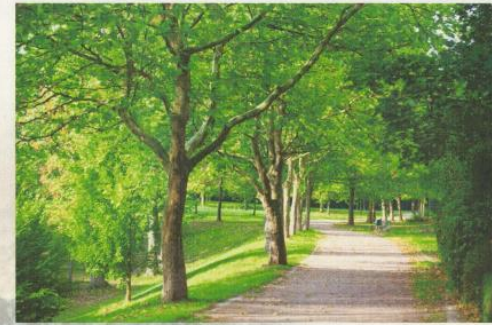
Bicycle Playground



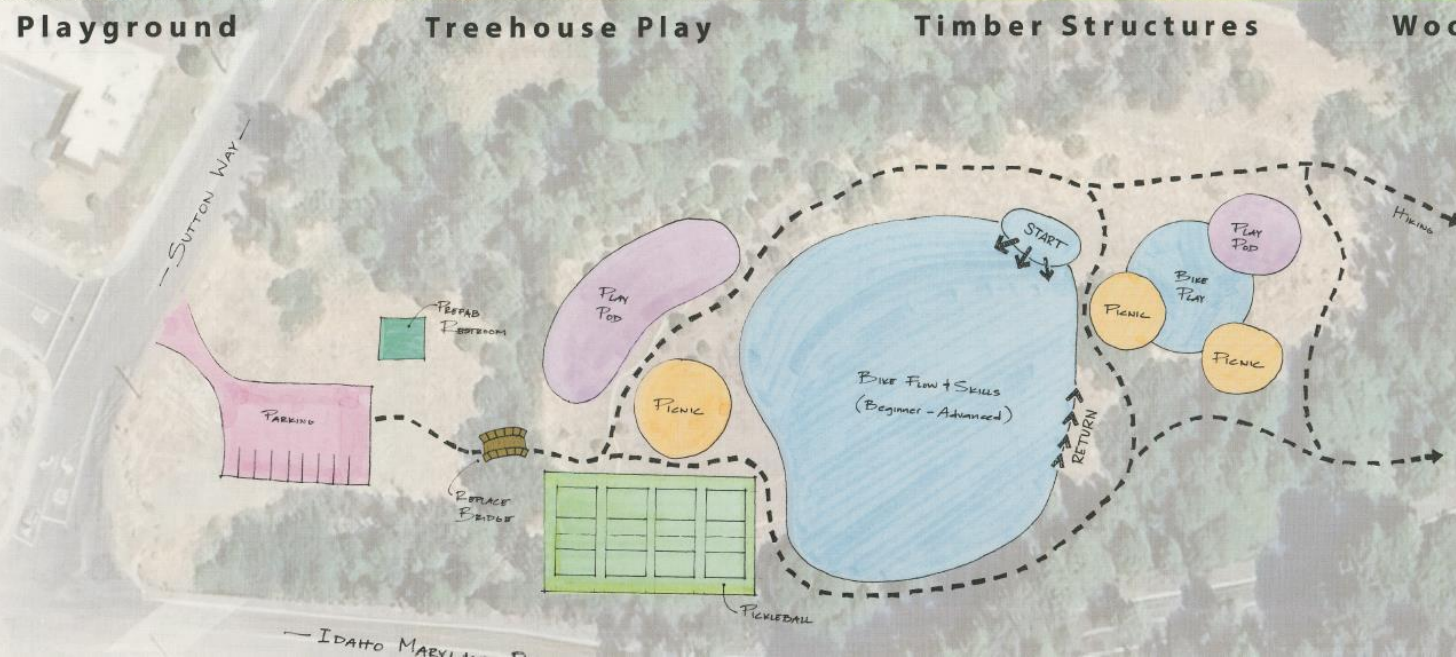
Treehouse Play



Timber Structures



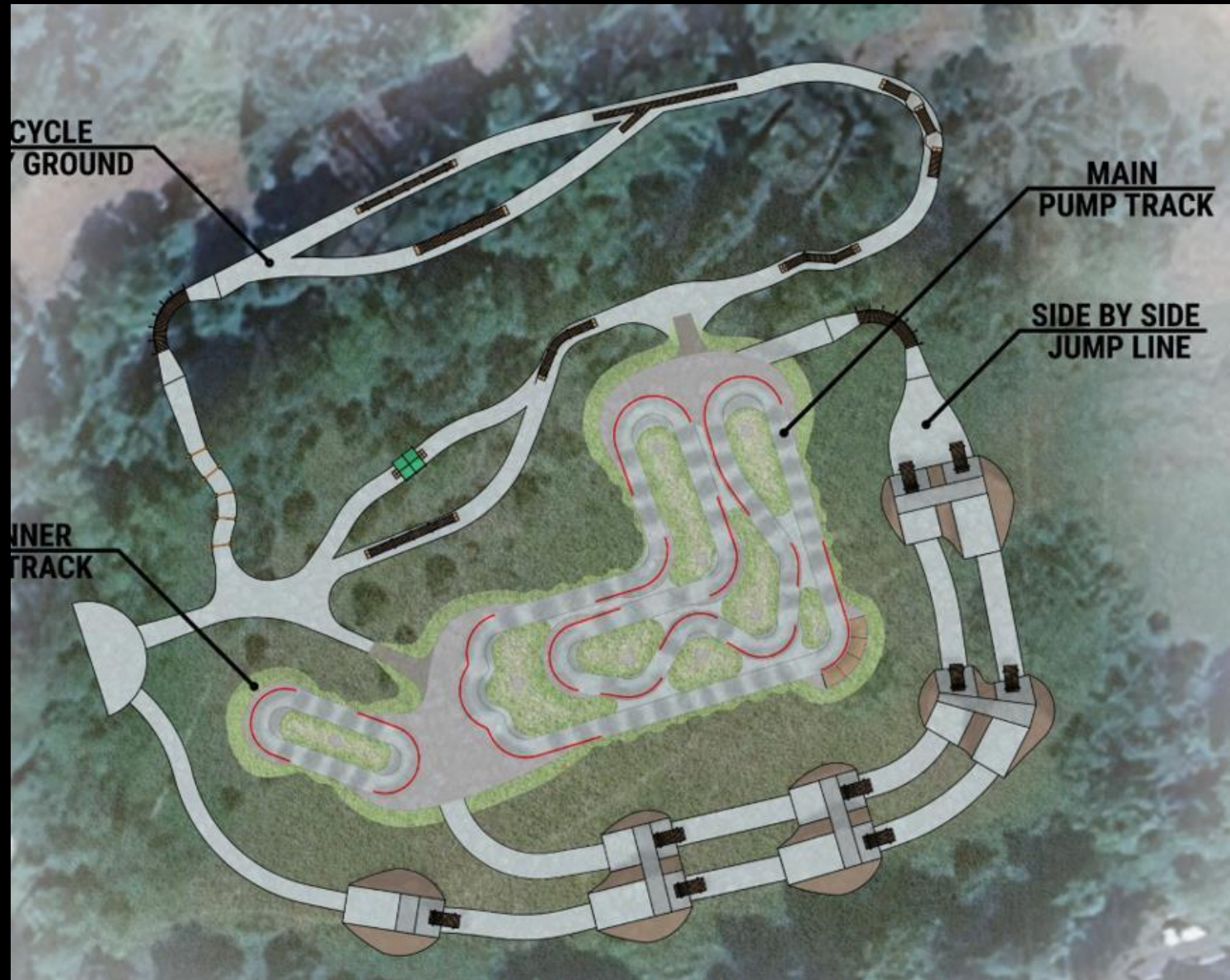
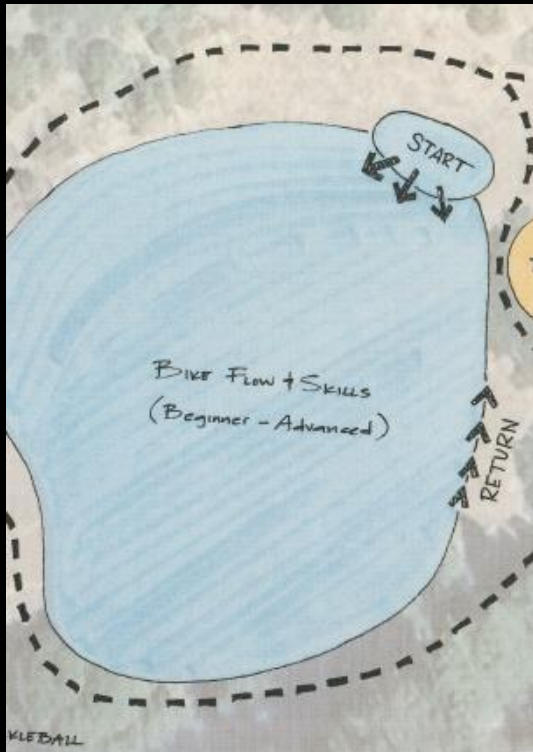
Wooded Walking Paths



— IDAHO MARYLAND

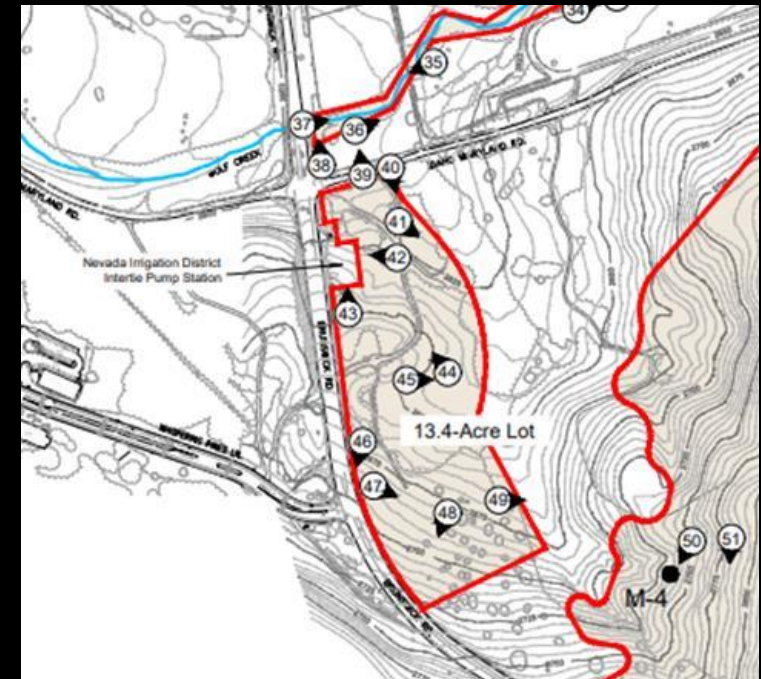
Parks Projects

Idaho Maryland Bike Park

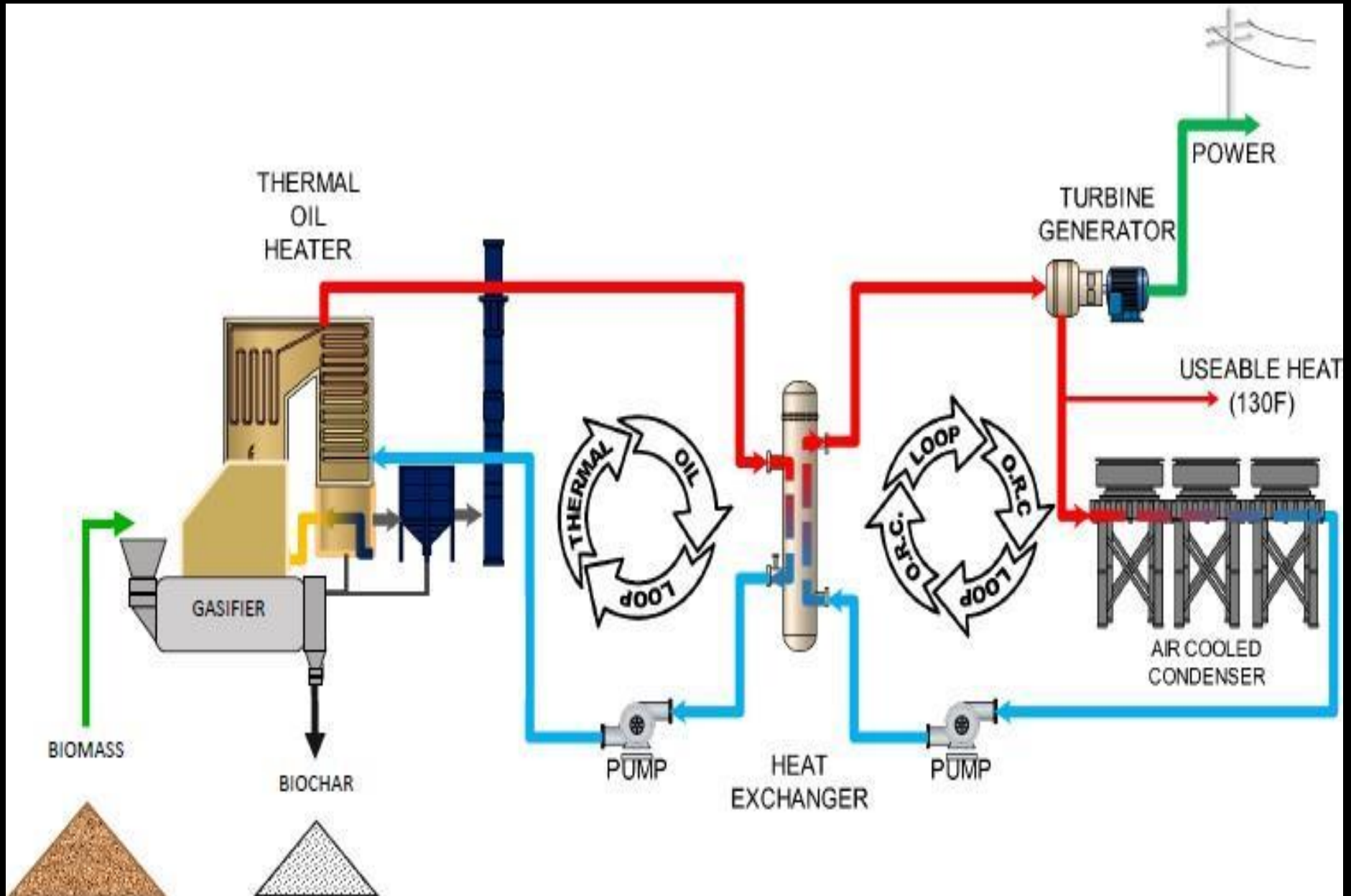




**GRASS VALLEY BIOENERGY
PROJECT - FOREST BIOMASS TO
RENEWABLE ENERGY**




BIOENERGY FACILITY TECHNOLOGY- CONCEPTUAL LAYOUT



Measure B



A tracked skid steer loader, primarily orange and black, is shown in a forest clearing brush. The machine is moving from left to right, kicking up a cloud of brown dust or dirt. In the foreground, the back of a person wearing a grey baseball cap and a bright yellow safety vest is visible. The background consists of tall, thin trees and dense green brush.

Measure
B

Risk
Reduction



Measure E – New Ladder Truck



Measure E - Vehicles & Technology





Measure E

