



# RESOLUTION No. 21-538

## OF THE BOARD OF SUPERVISORS OF THE COUNTY OF NEVADA

### PUBLIC HEARING TO ADOPT THE FINAL NEVADA COUNTY SUPERVISORIAL DISTRICT MAP

WHEREAS, the County of Nevada is required to adopt a new map redrawing the supervisorial electoral district boundaries by December 15, 2021, following the decennial census, using population adjusted data; and

WHEREAS, in compliance with the Fair Maps Act (AB 849 (Bonta), Chapter 557, Statutes of 2019), the County held the first public workshop on July 29<sup>th</sup> at 6:00 pm where members of the public received a presentation on the 2021 Redistricting process, were able to ask questions, and provide community input. The second public workshop was held on August 24<sup>th</sup> where the Board of Supervisors and the public received a presentation, were able to ask questions, and provide community input. The third and fourth public workshops were held in November, to receive input from the Board and the public on the redistricting process, including feedback on proposed district boundary maps; and

WHEREAS, draft maps were presented at the November 9, 2021 public workshop and one draft map was presented at the November 16, 2021; and

WHEREAS, on November 16, 2021 the Board of Supervisors selected a Final Draft Map which was published to the County's Redistricting website on November 12, 2021; and

WHEREAS, the Final Supervisorial District Map was published on December 8, 2021 on the County's Redistricting website.

NOW, THEREFORE, BE IT HEREBY RESOLVED, that the Board of Supervisors of the County of Nevada, State of California, hereby adopts the Final Supervisorial District Map attached hereto as Exhibit A and available on the County's Redistricting website at:

[2021 COUNTY OF NEVADA REDISTRICTING | Nevada County, CA](https://mynevadacounty.com/3196)  
[mynevadacounty.com/3196](https://mynevadacounty.com/3196)

PASSED AND ADOPTED by the Board of Supervisors of the County of Nevada at a regular meeting of said Board, held on the 14th day of December, 2021, by the following vote of said Board:

Ayes: Supervisors Heidi Hall, Edward Scofield, Dan Miller, Susan K. Hoek and Hardy Bullock.

Noes: None.

Absent: None.

Abstain: None.

ATTEST:

JULIE PATTERSON HUNTER  
Clerk of the Board of Supervisors

By:  \_\_\_\_\_

  
\_\_\_\_\_  
Dan Miller, Chair

12/14/2021 cc: IGS\*  
AC\*

# Nevada County, CA: 2021 Redistricting Draft Final Map

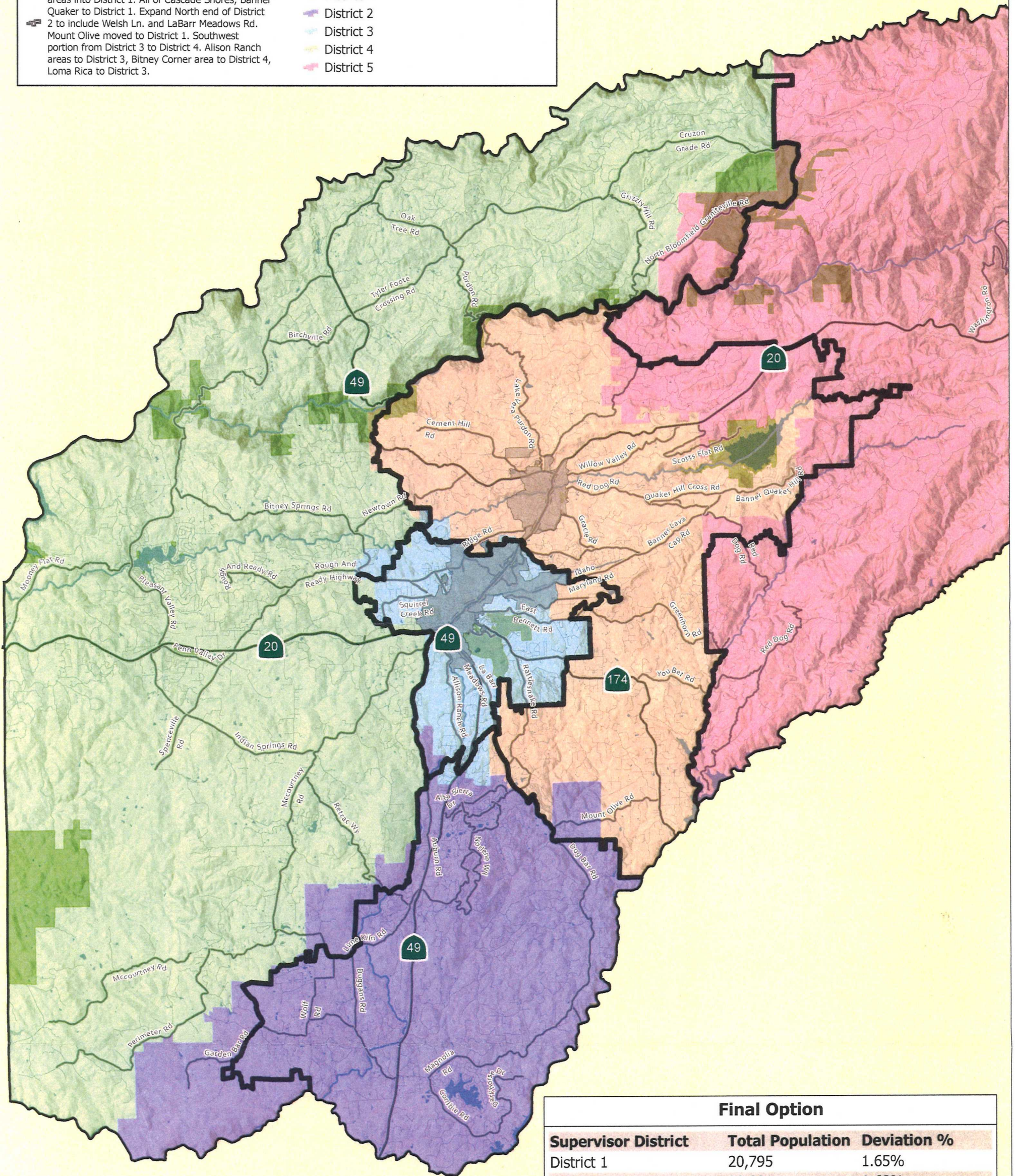
## Legend

### Final Option

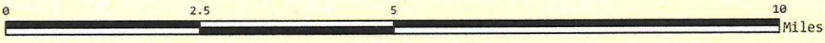
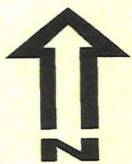
Modification of Options 1 and 4. Putting most of North Bloomfield and Rock Creek Rd, Highway 20 areas into District 1. All of Cascade Shores, Banner Quaker to District 1. Expand North end of District 2 to include Welsh Ln. and LaBarr Meadows Rd. Mount Olive moved to District 1. Southwest portion from District 3 to District 4. Alison Ranch areas to District 3, Bitney Corner area to District 4, Loma Rica to District 3.

### Current Supervisor District Boundaries

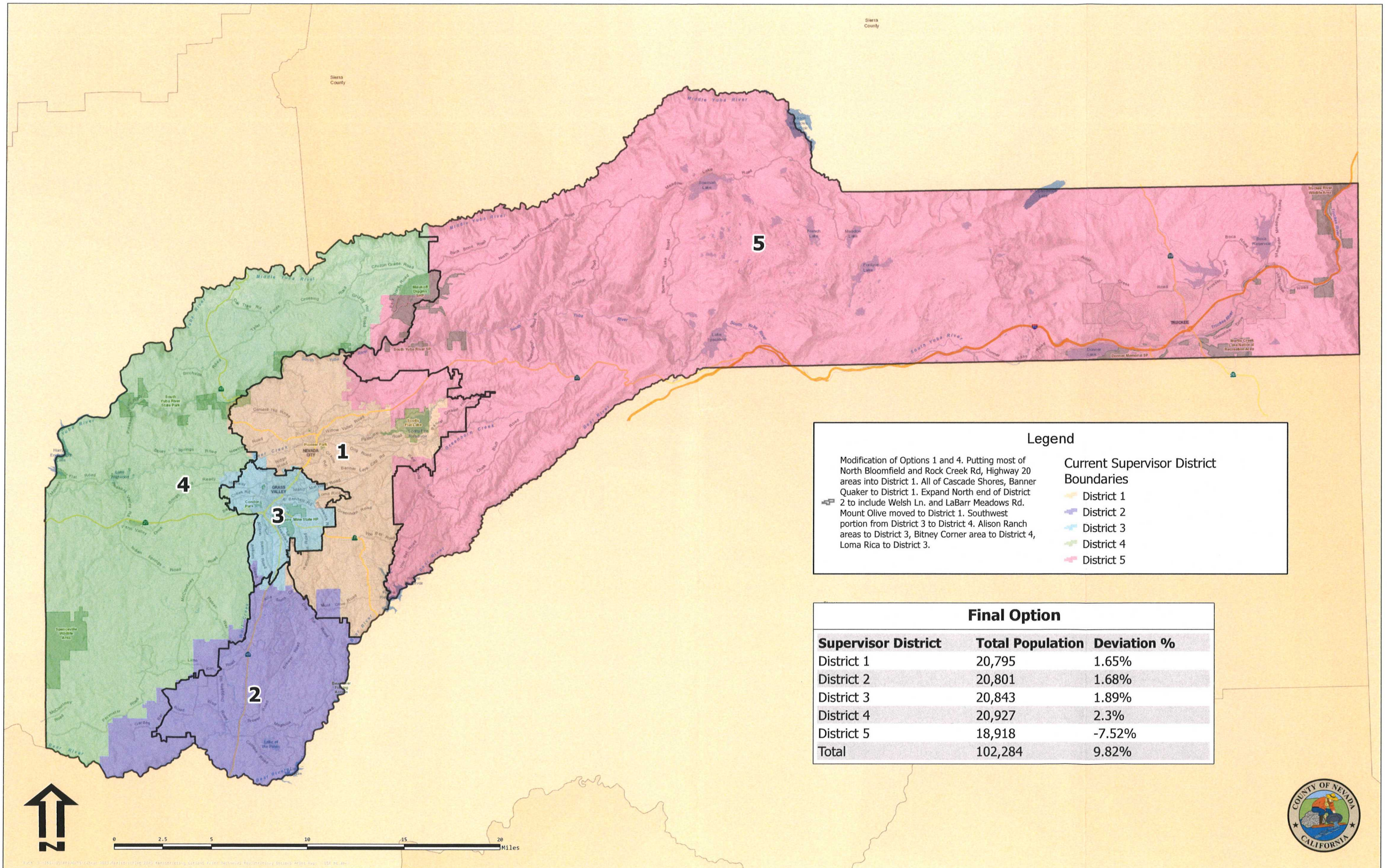
- District 1
- District 2
- District 3
- District 4
- District 5



Final Option		
Supervisor District	Total Population	Deviation %
District 1	20,795	1.65%
District 2	20,801	1.68%
District 3	20,843	1.89%
District 4	20,927	2.3%
District 5	18,918	-7.52%
<b>Total</b>	<b>102,284</b>	<b>9.82%</b>



# Nevada County, CA: 2021 Redistricting Draft Final Map



**Legend**

Modification of Options 1 and 4. Putting most of North Bloomfield and Rock Creek Rd, Highway 20 areas into District 1. All of Cascade Shores, Banner Quaker to District 1. Expand North end of District 2 to include Welsh Ln. and LaBarr Meadows Rd. Mount Olive moved to District 1. Southwest portion from District 3 to District 4. Alison Ranch areas to District 3, Bitney Corner area to District 4, Loma Rica to District 3.

**Current Supervisor District Boundaries**

- District 1
- District 2
- District 3
- District 4
- District 5

Final Option		
Supervisor District	Total Population	Deviation %
District 1	20,795	1.65%
District 2	20,801	1.68%
District 3	20,843	1.89%
District 4	20,927	2.3%
District 5	18,918	-7.52%
<b>Total</b>	<b>102,284</b>	<b>9.82%</b>

