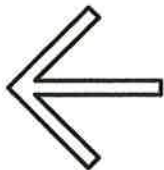


**EXHIBIT "B"**

BEING A PORTION OF THE NW 1/4 SECTION 1, T.15 N., R. 8 E., M.D.B.&M. IN THE UNINCORPORATED COUNTY OF NEVADA, CALIFORNIA  
FEBRUARY, 2019



**NORTH**

**POINT OF COMMENCEMENT**  
(N.E. CORNER PCL 1, RS 15/ 40)

S09°01'00"W  
436.81' (TIE)

**POINT OF BEGINNING**

Δ=3°30'52" L=13.19' R=215.00'

S87°03'53"E 42.78'

EASEMENT LOCATION  
AREA = 1,631 SQ.FT.

N87°03'53"W 42.78'

Δ=3°05'53" L=10.00' R=185.00'

N02°56'07"E 30.00'

S09°01'00"W 30.04'

N83° 58' 00"W  
(TANGENT)

LA BARR MEADOWS ROAD

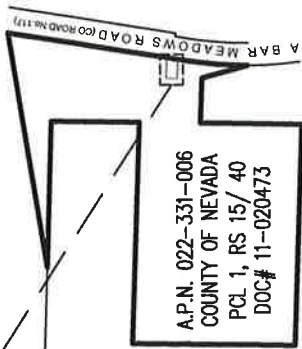
**DETAIL A**

SCALE: 1"=20'

SEE DETAIL A



DATE SIGNED: 5-16-19



A.P.N. 022-331-006  
COUNTY OF NEVADA  
PCL 1, RS 15/ 40  
DOC# 11-020473

**OVERALL**  
SCALE: 1"=500'

**BASIS OF BEARINGS:**

THE BASIS OF BEARINGS IS IDENTICAL TO THAT RECORD OF SURVEY RECORDED IN BOOK 15 OF SURVEYS AT PAGE 40, O.R.N.C.



P L A N N I N G  
E N G I N E E R I N G  
& S U R V E Y I N G

DRAWN BY: MDW

SHEET 1 OF 1