

Pines to Mines Trail

August 10, 2021

- PG&E Boundaries
- USFS
- New Trail Construction
- Existing Trail

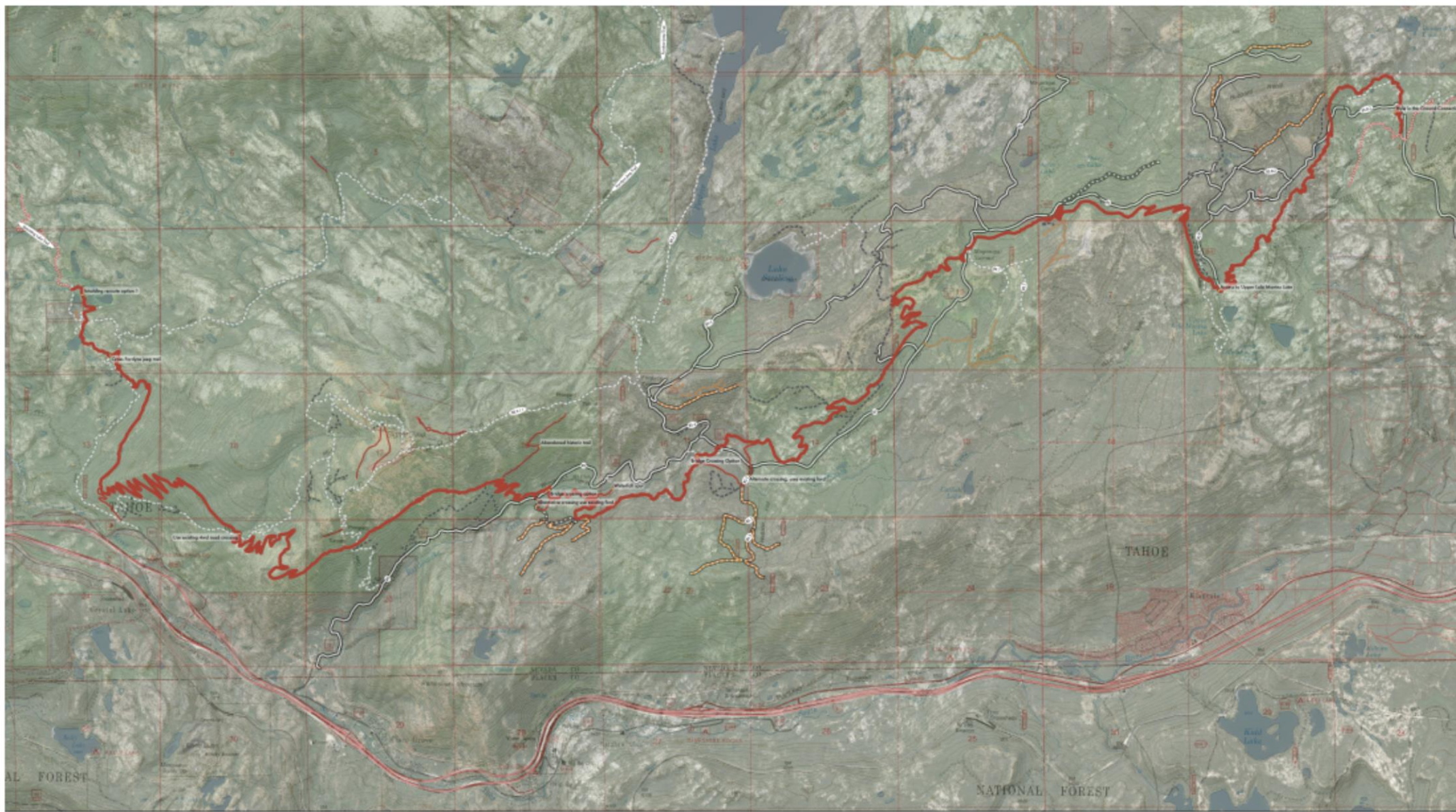


About the Pines to Mines Trail

- An approximately 80-mile monumental backcountry trail that will connect Eastern and Western Nevada County
- Multi-use trail
- Will improve public access to open space and trails, and support economic development

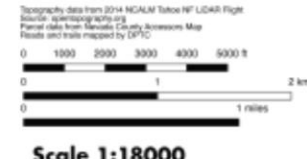
Connections:

- Trout Creek Canyon
- Donner Lake Rim
- Hole in the Ground
- Spaulding Lake
- Pioneer Trails



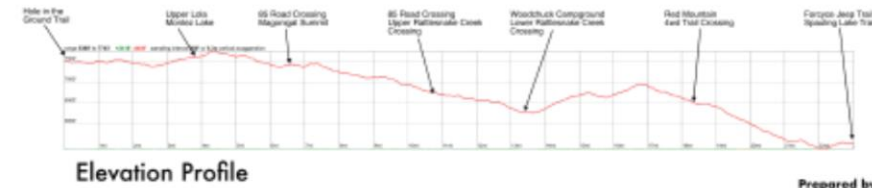
Pines to Mines Trail - Overview Map

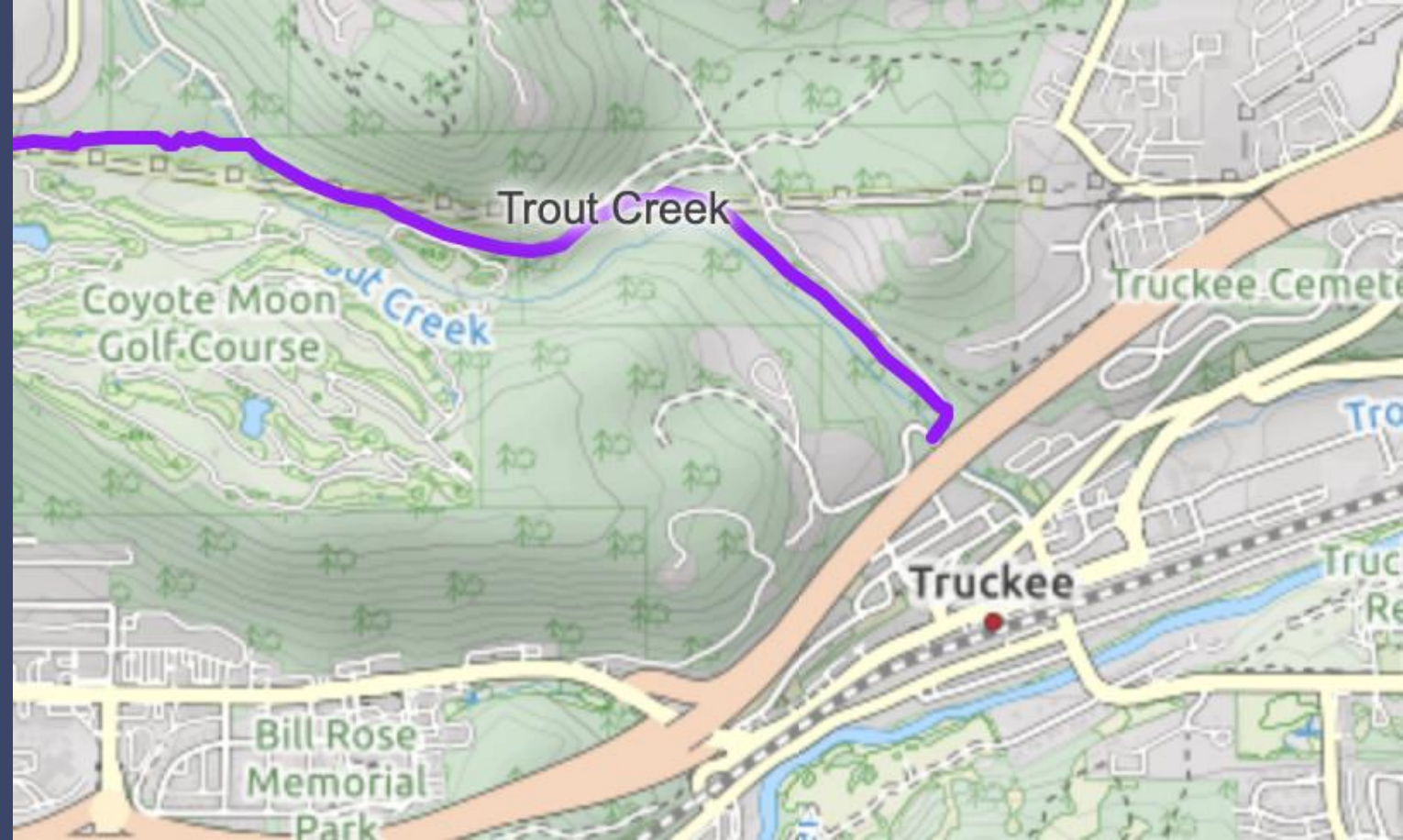
A collaboration between:



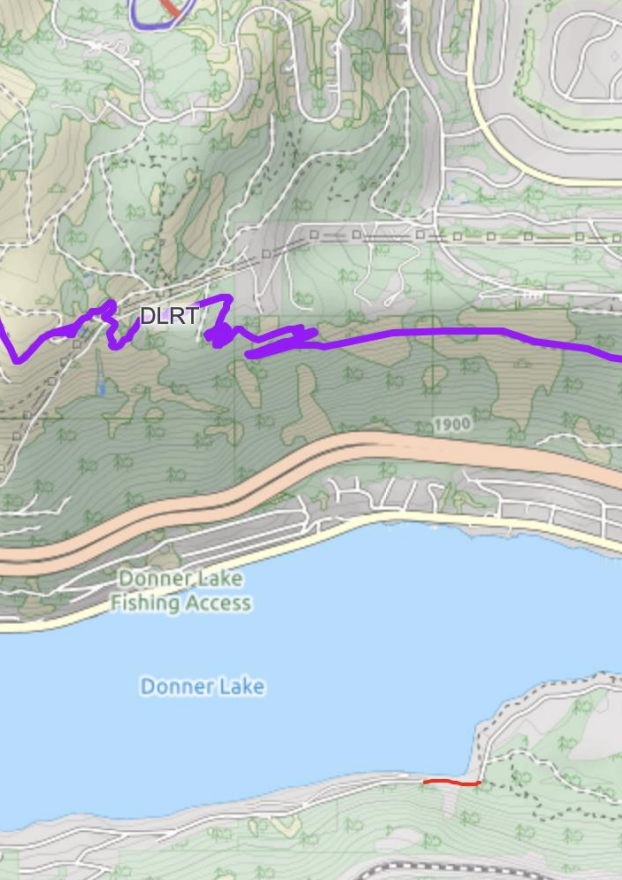
Legend

- Proposed Corridor
- Access Routes
 - Road - Open
 - Road - Abandoned
 - Trail - Unknown
 - Jeep/Skid - Open
 - Jeep/Skid - Abandoned
- Jeep/Skid - Unknown
- Trail - Open
- Trail - Abandoned
- Trail - Unknown
- Property Ownership
 - Parcel Boundary
 - Tahoe NF



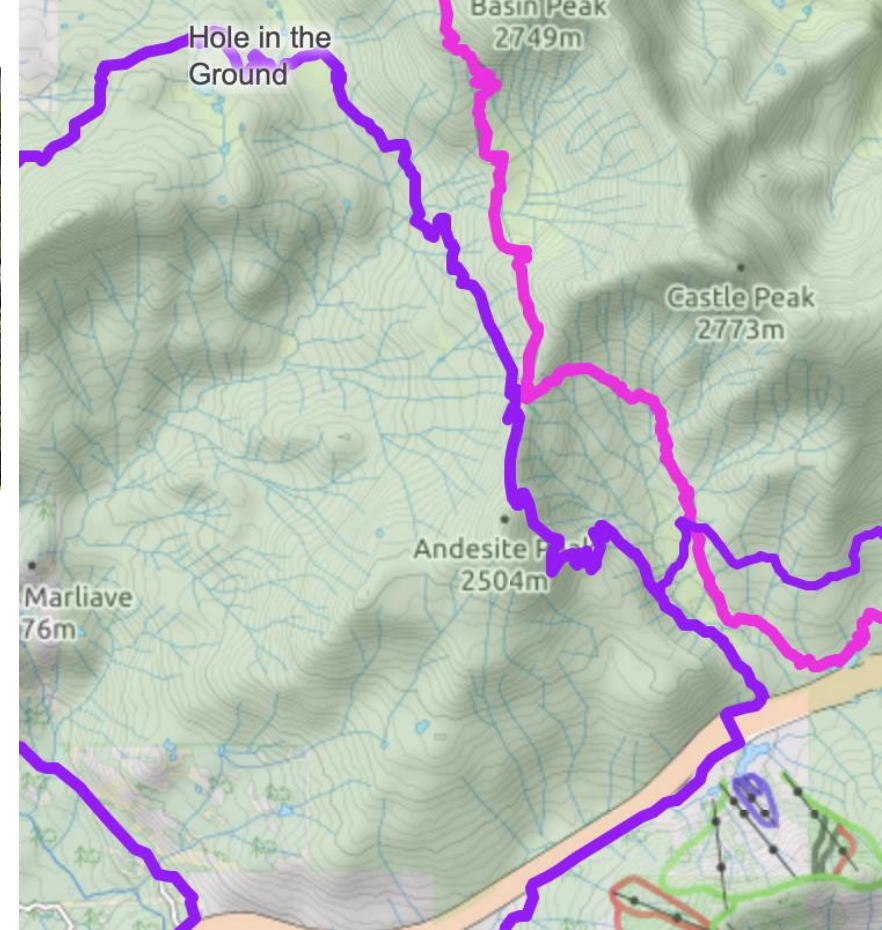


Truckee: Trout Creek to Donner Lake Rim Trail



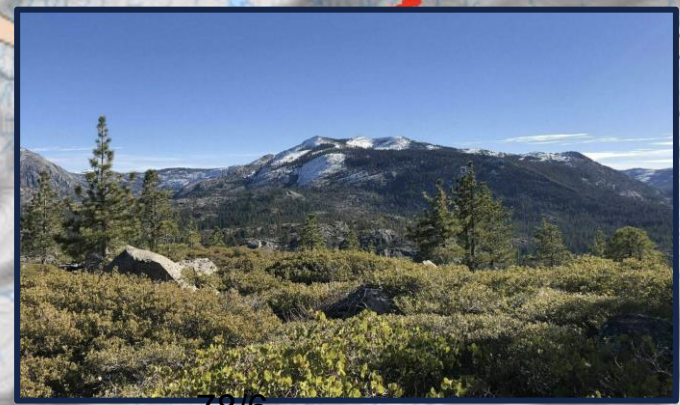
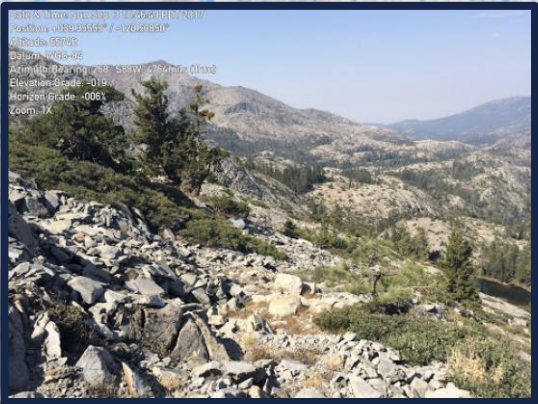
Donner Lake Rim Trail



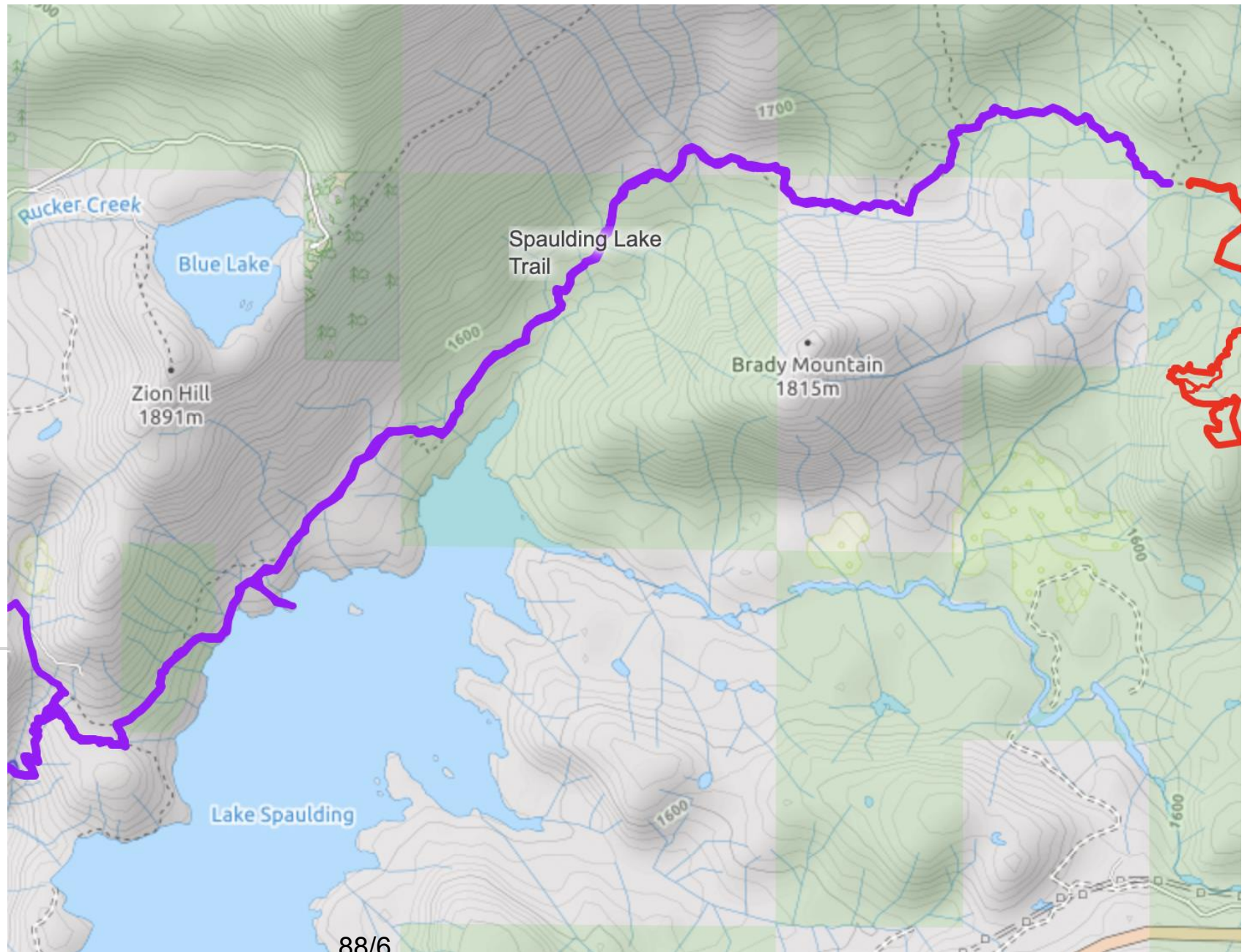


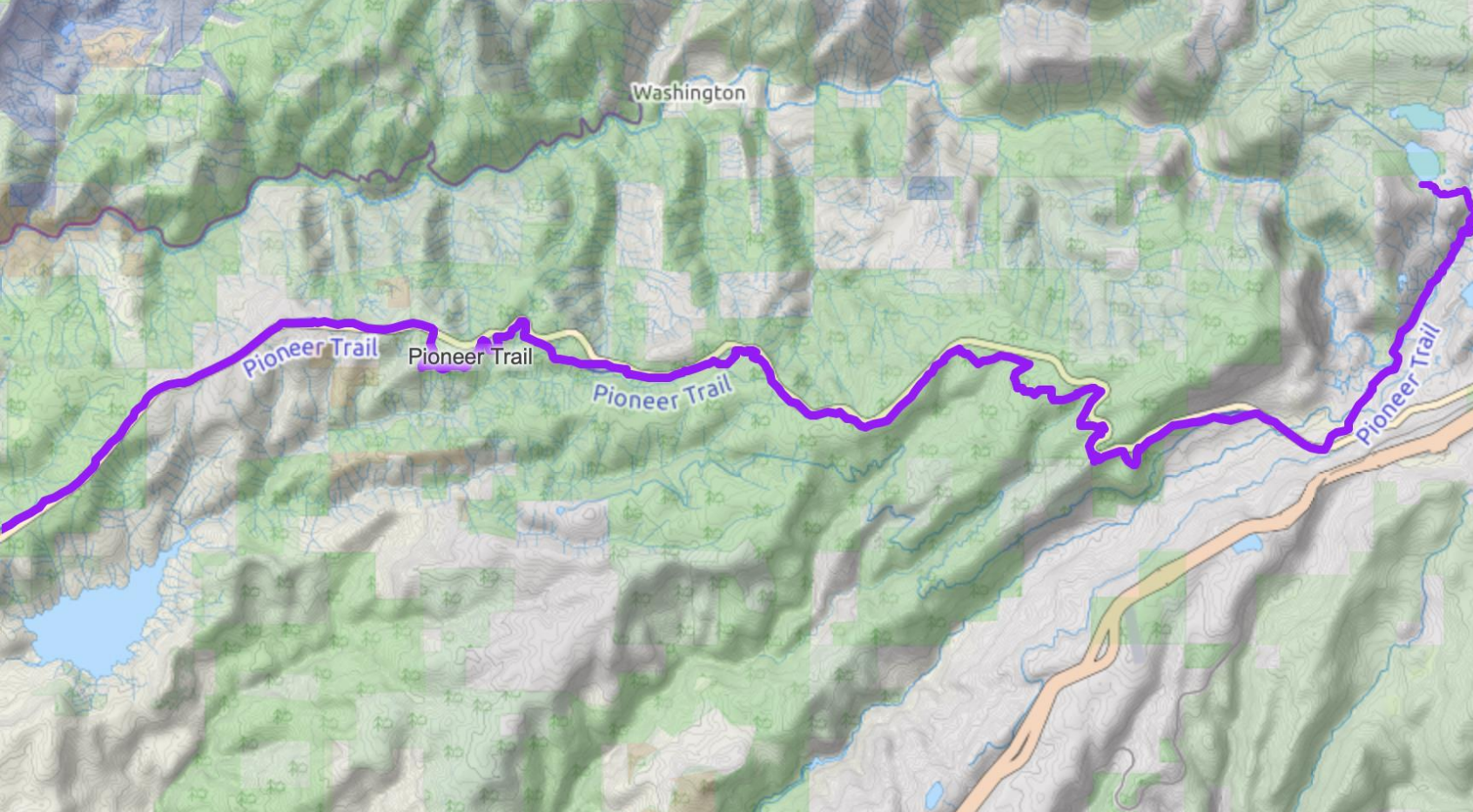
Donner Lake Rim Trail to Hole in the Ground

To Be Constructed:



Spaulding Lake Trail





Pioneer Trail





Economic Benefit

- **Outdoor Recreation is Good For Business**
 - Outdoor recreation in Nevada County
 - Accounts for 3,668 jobs or approximately 10% of jobs
 - Results in \$344 million in spending
 - Results in \$139 million in payroll

(Dean Runyan Associates 2017)



Economic Benefit

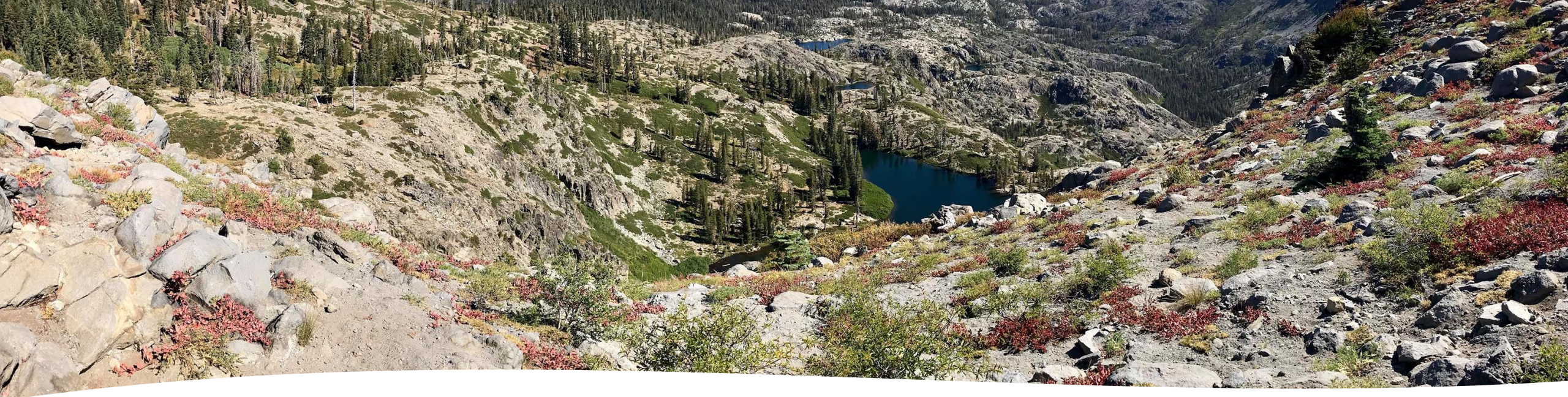
- **Outdoor Recreation is Identified as a Key Economic Sector**
- **Investments in Diversifying Recreation Diversify the Economy**
- **Investments in Diversifying Recreation Distribute Recreation Activity Across a Broader Geography Reducing Pressure on Overused Assets**

(SEDD Comprehensive Economic Development Strategy 2018-2022)



Health and Social Benefit

- **Outdoor Recreation Has Significant and Measurable Health Benefits:**
 - Diminishes Risk of Chronic Disease
 - Boosts Immune System
 - Reduces Obesity
 - Increases Life Expectancy
 - Improves Mental Health
- **Pines to Mines is entirely Within Nevada County—a Uniquely Nevada County Asset**
- **Pines to Mines Links the Western and Eastern County**
- **Investment in Planning Could Create Significant Leverage**



Pines to Mines Project History

- **Non-profit organizations began meeting with former Supervisor Anderson about the Pines to Mines Trail in 2015**
- **In January 2020, CEO staff helped convene regular stakeholder meetings**
- **At the Board Workshops in January 2020 and 2021, County Supervisors discussed allocating \$100,000 of infrastructure funding for the Pines to Mines Environmental Review**





County support for the Pines to Mines Trail

- CEO staff convened meetings with non-profit organizations and the Tahoe National Forest
- Problem-solved trail alignment around Sierra Pacific Industries land and the Nevada City area
- Identified long term trail maintenance partners
- Facilitated discussion and gathered feedback for the NEPA scope of issues to be studied



14876



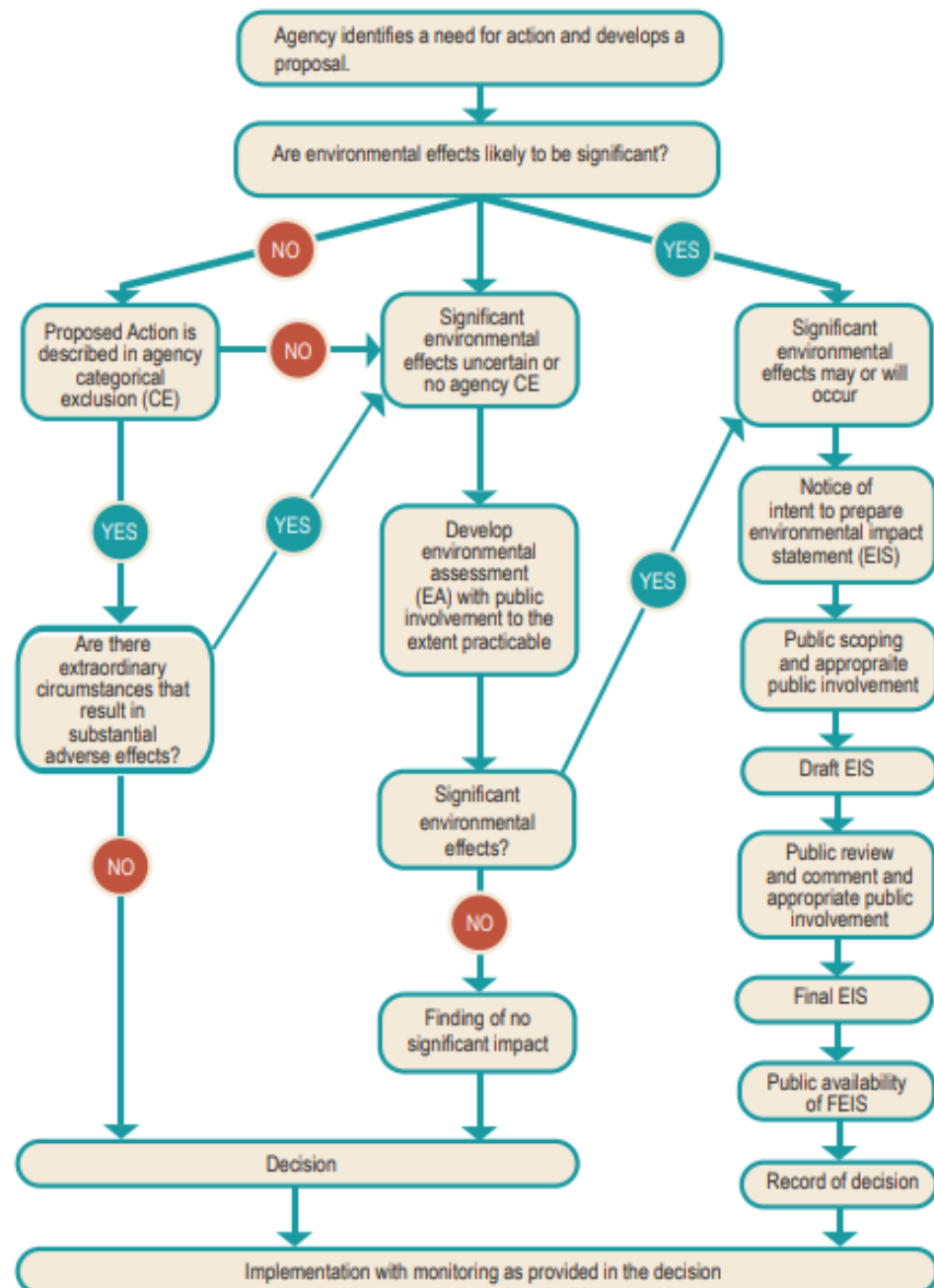


National Environmental Policy Act (NEPA)

Environmental Assessment Process

- **Develop a Proposed Action (Scope of Project)**
- **Alternatives Identified (alternate routes, user types, etc.)**
- **Public Scoping**
- **Conduct Resource Surveys, Analysis and Documentation**
 - Identify Baseline Conditions
 - Study Trail Alignment
 - Study and Analysis of Potential Resource Impacts
 - Biological, Cultural, Soils, Watersheds, User Types, etc.

The NEPA Process

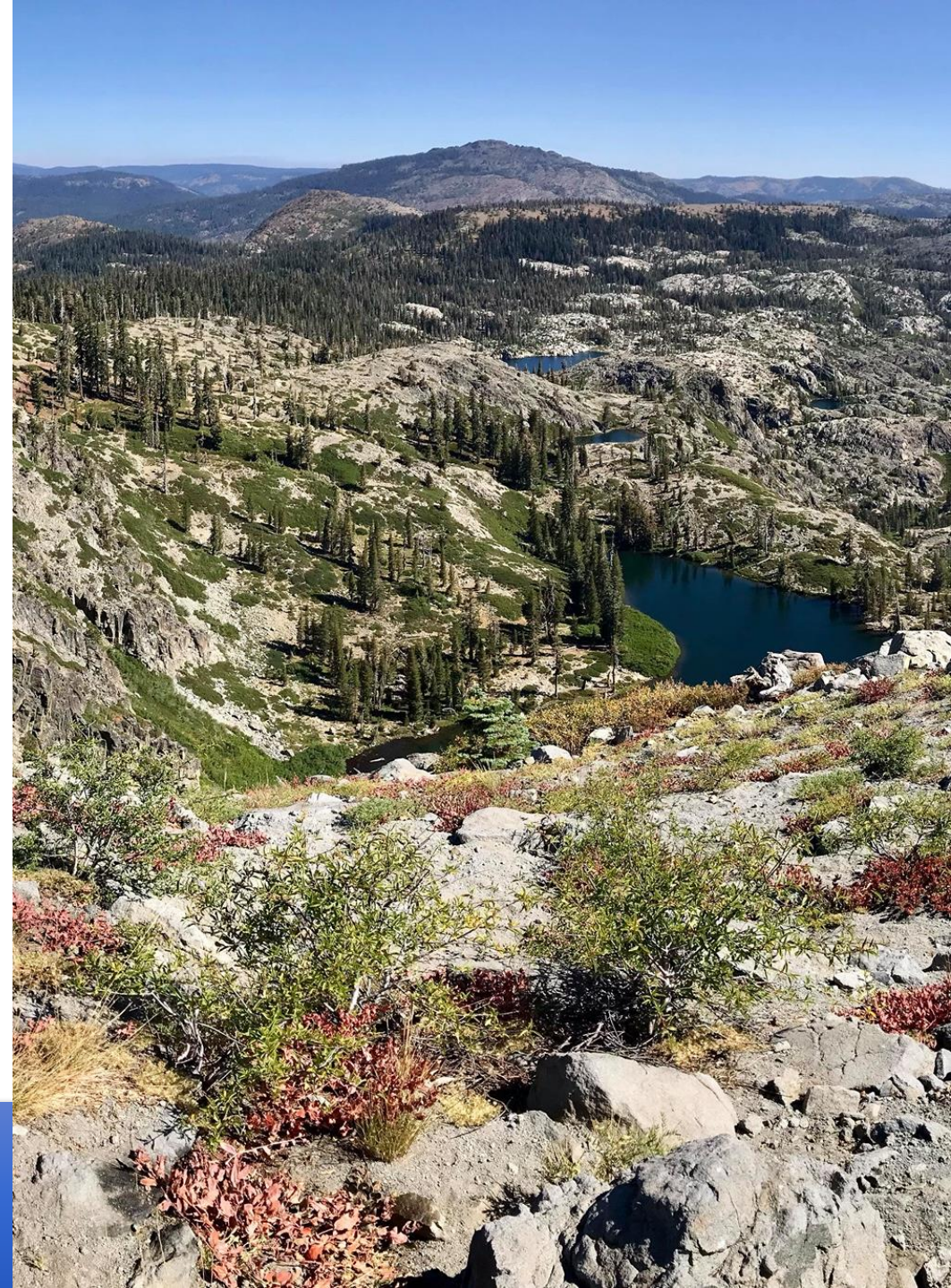


NEPA Process

- Draft Environmental Documentation
- Public Review/Comment period
 - 30 Day public review and comment
- Decision Notice
 - Environmental Assessment and Decision Notice prepared
 - Final Decision Issued / Published in Federal Register

Potential Timeline

- County RFP - Contract Summer 2021
- Agreement – Fall/Winter 2021
- Public Scoping – Winter 2021
- Surveys – Summer/Fall 2022
- Analysis/Documentation Winter/Spring 2022-23
- Public Comment Period
Spring/Summer 2023
- Decision - Summer 2023
- Potential start of construction - Fall 2023





Shared vision

- **Connecting people to people**
- **Connecting people to the forest**
- **Connecting the Sierra**



Committed to the planning process

- **Listening to scoping input on issues to analyze**
- **Conducting thorough analysis**
- **Making a timely decision:**
 - Whether to construct trail
 - Alignment
 - Uses



Making it a Reality

Following a potential decision to construct the trail, next steps, would include:

- Flag trail route
- Seek trail building grants
- Select trail building team
- Organize volunteer construction and maintenance efforts

A wide-angle landscape photograph of a mountain valley. In the center, a small, clear blue lake is nestled among rocky, sparsely forested slopes. The foreground is dominated by grey, jagged rocks and patches of low-lying green and red vegetation. The background shows rolling mountain ranges under a clear, bright blue sky. The overall scene is rugged and natural.

Questions - Discussion