



Centennial Site

10350 Centennial Drive

Grass Valley, CA 95945

Inquiry Number: 7387294.3

July 17, 2023

The EDR Aerial Photo Decade Package



6 Armstrong Road, 4th floor
Shelton, CT 06484
Toll Free: 800.352.0050
www.edrnet.com

EDR Aerial Photo Decade Package

07/17/23

Site Name:

Centennial Site
10350 Centennial Drive
Grass Valley, CA 95945
EDR Inquiry # 7387294.3

Client Name:

Rise Gold Corp.
333 Crown Point Circle, # 215
Grass Valley, CA 95945
Contact: Ben Mossman



Environmental Data Resources, Inc. (EDR) Aerial Photo Decade Package is a screening tool designed to assist environmental professionals in evaluating potential liability on a target property resulting from past activities. EDR's professional researchers provide digitally reproduced historical aerial photographs, and when available, provide one photo per decade.

Search Results:

<u>Year</u>	<u>Scale</u>	<u>Details</u>	<u>Source</u>
2020	1"=500'	Flight Year: 2020	USDA/NAIP
2016	1"=500'	Flight Year: 2016	USDA/NAIP
2012	1"=500'	Flight Year: 2012	USDA/NAIP
2009	1"=500'	Flight Year: 2009	USDA/NAIP
2006	1"=500'	Flight Year: 2006	USDA/NAIP
1998	1"=500'	Acquisition Date: August 16, 1998	USGS/DOQQ
1984	1"=500'	Flight Date: June 29, 1984	USDA
1978	1"=500'	Flight Date: July 08, 1978	USGS
1962	1"=500'	Flight Date: July 28, 1962	USDA
1957	1"=500'	Flight Date: June 13, 1957	USGS
1952	1"=500'	Flight Date: July 29, 1952	USDA
1947	1"=500'	Flight Date: February 01, 1947	USGS
1939	1"=500'	Flight Date: June 17, 1939	USDA

When delivered electronically by EDR, the aerial photo images included with this report are for ONE TIME USE ONLY. Further reproduction of these aerial photo images is prohibited without permission from EDR. For more information contact your EDR Account Executive.

Disclaimer - Copyright and Trademark Notice

This Report contains certain information obtained from a variety of public and other sources reasonably available to Environmental Data Resources, LLC. It cannot be concluded from this Report that coverage information for the target and surrounding properties does not exist from other sources. This Report is provided on an "AS IS", "AS AVAILABLE" basis. NO WARRANTY EXPRESS OR IMPLIED IS MADE WHATSOEVER IN CONNECTION WITH THIS REPORT.

ENVIRONMENTAL DATA RESOURCES, LLC AND ITS SUBSIDIARIES, AFFILIATES AND THIRD PARTY SUPPLIERS DISCLAIM ALL WARRANTIES, OF ANY KIND OR NATURE, EXPRESS OR IMPLIED, ARISING OUT OF OR RELATED TO THIS REPORT OR ANY OF THE DATA AND INFORMATION PROVIDED IN THIS REPORT, INCLUDING WITHOUT LIMITATION, ANY WARRANTIES REGARDING ACCURACY, QUALITY, CORRECTNESS, COMPLETENESS, COMPREHENSIVENESS, SUITABILITY, MERCHANTABILITY, FITNESS FOR A PARTICULAR PURPOSE, TITLE, NON-INFRINGEMENT, MISAPPROPRIATION, OR OTHERWISE. ALL RISK IS ASSUMED BY THE USER. IN NO EVENT SHALL ENVIRONMENTAL DATA RESOURCES, LLC OR ITS SUBSIDIARIES, AFFILIATES OR THIRD PARTY SUPPLIERS BE LIABLE TO ANYONE FOR ANY DIRECT, INCIDENTAL, INDIRECT, SPECIAL, CONSEQUENTIAL OR OTHER DAMAGES OF ANY TYPE OR KIND (INCLUDING BUT NOT LIMITED TO LOSS OF PROFITS, LOSS OF USE, OR LOSS OF DATA), ARISING OUT OF OR IN ANY WAY CONNECTED WITH THIS REPORT OR ANY OF THE DATA AND INFORMATION PROVIDED IN THIS REPORT.

Any analyses, estimates, ratings, environmental risk levels, or risk codes provided in this Report are provided for illustrative purposes only, and are not intended to provide, nor should they be interpreted as providing any facts regarding, or prediction or forecast of, any environmental risk for any property. Only an assessment performed by a qualified environmental professional can provide findings, opinions or conclusions regarding the environmental risk or conditions in, on or at any property.

Copyright 2023 by Environmental Data Resources, Inc. All rights reserved. Reproduction in any media or format, in whole or in part, of any report or map of Environmental Data Resources, Inc., or its affiliates, is prohibited without prior written permission.

EDR and its logos (including Sanborn and Sanborn Map) are trademarks of Environmental Data Resources, LLC or its affiliates. All other trademarks used herein are the property of their respective owners.



INQUIRY #: 7387294.3

YEAR: 2020

— = 500'





INQUIRY #: 7387294.3

YEAR: 2016

— = 500'





INQUIRY #: 7387294.3

YEAR: 2012

— = 500'





INQUIRY #: 7387294.3

YEAR: 2009

— = 500'





INQUIRY #: 7387294.3

YEAR: 2006

— = 500'



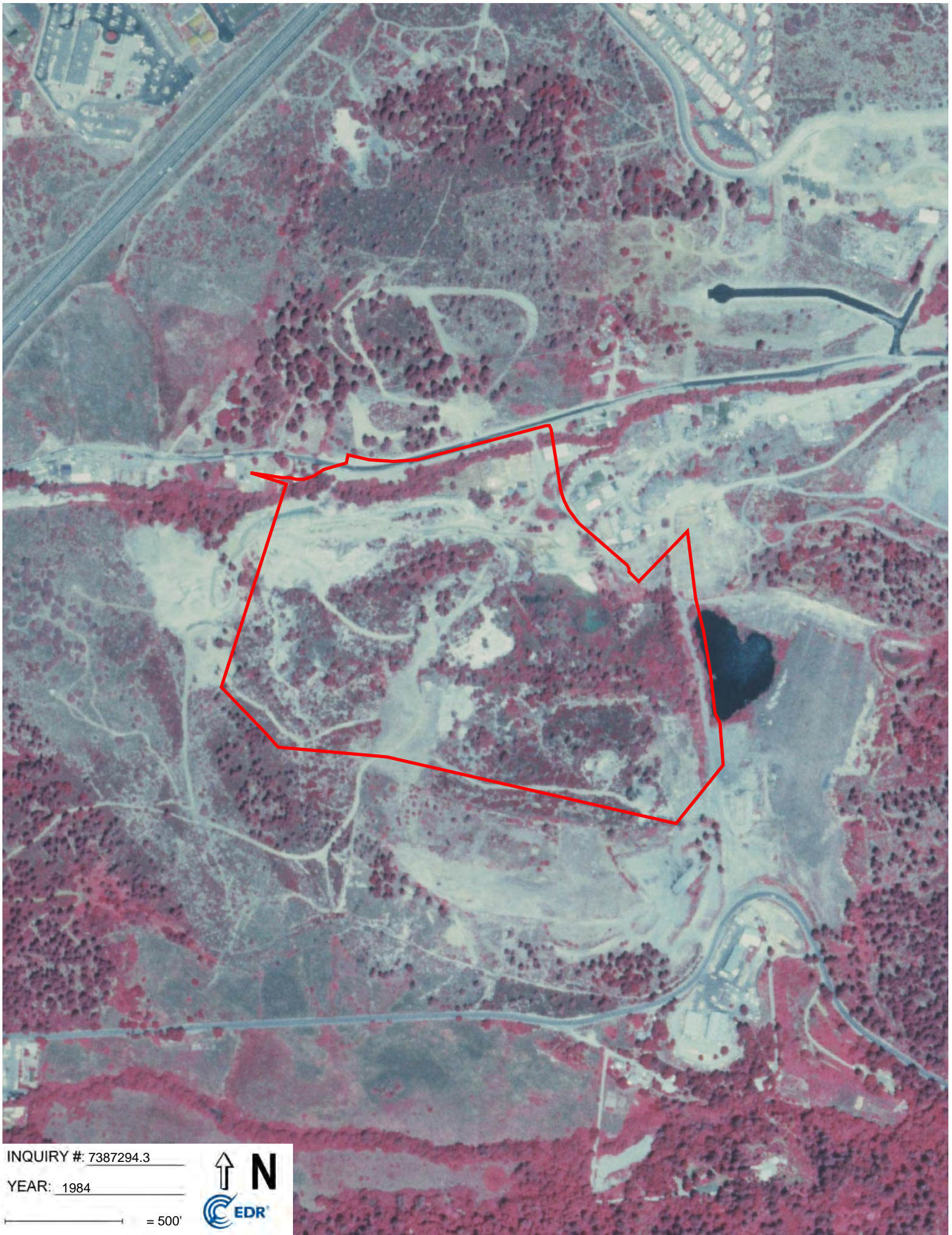


INQUIRY #: 7387294.3

YEAR: 1998

— = 500'





INQUIRY #: 7387294.3

YEAR: 1984

— = 500'





INQUIRY #: 7387294.3

YEAR: 1978

— = 500'



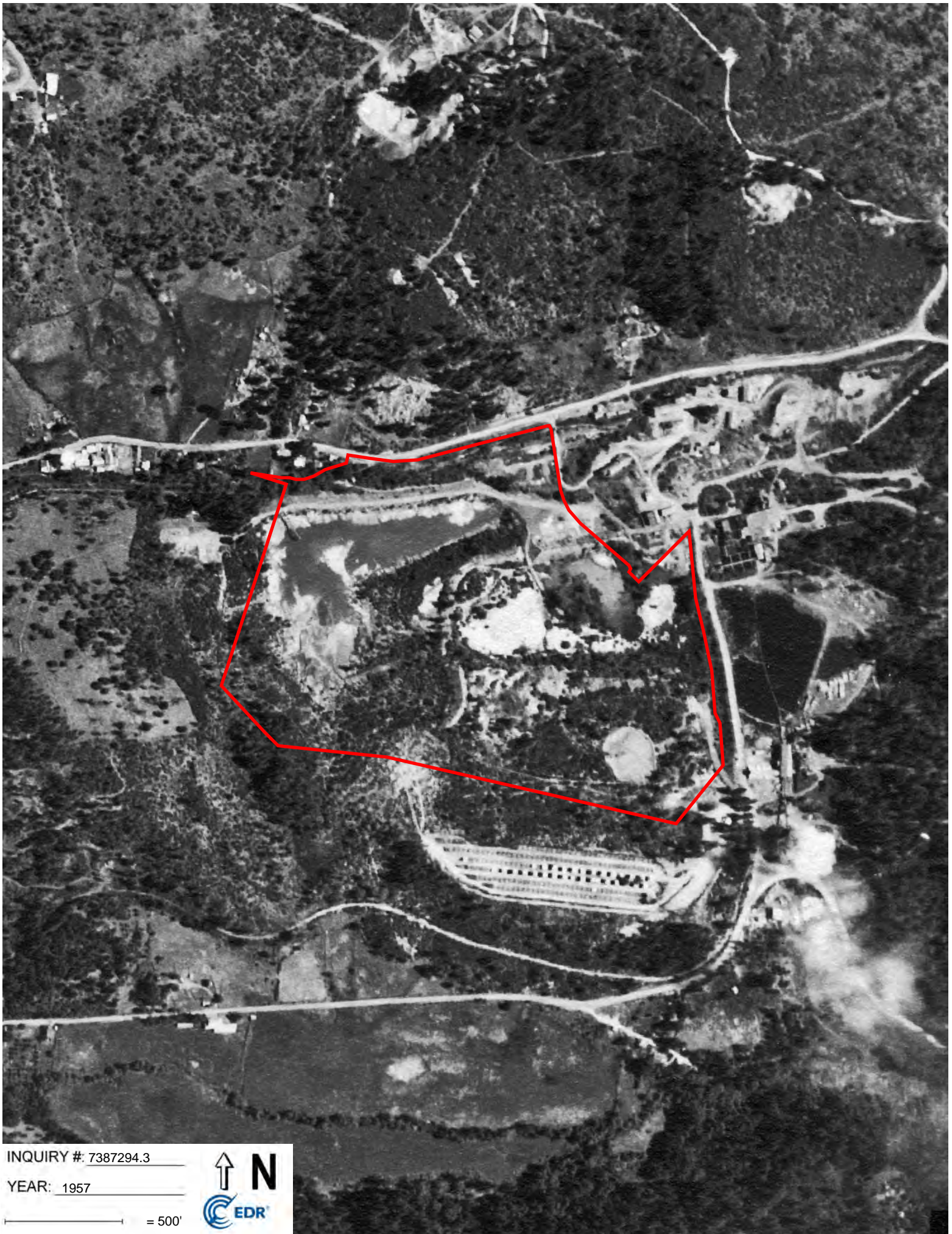


INQUIRY #: 7387294.3

YEAR: 1962

— = 500'



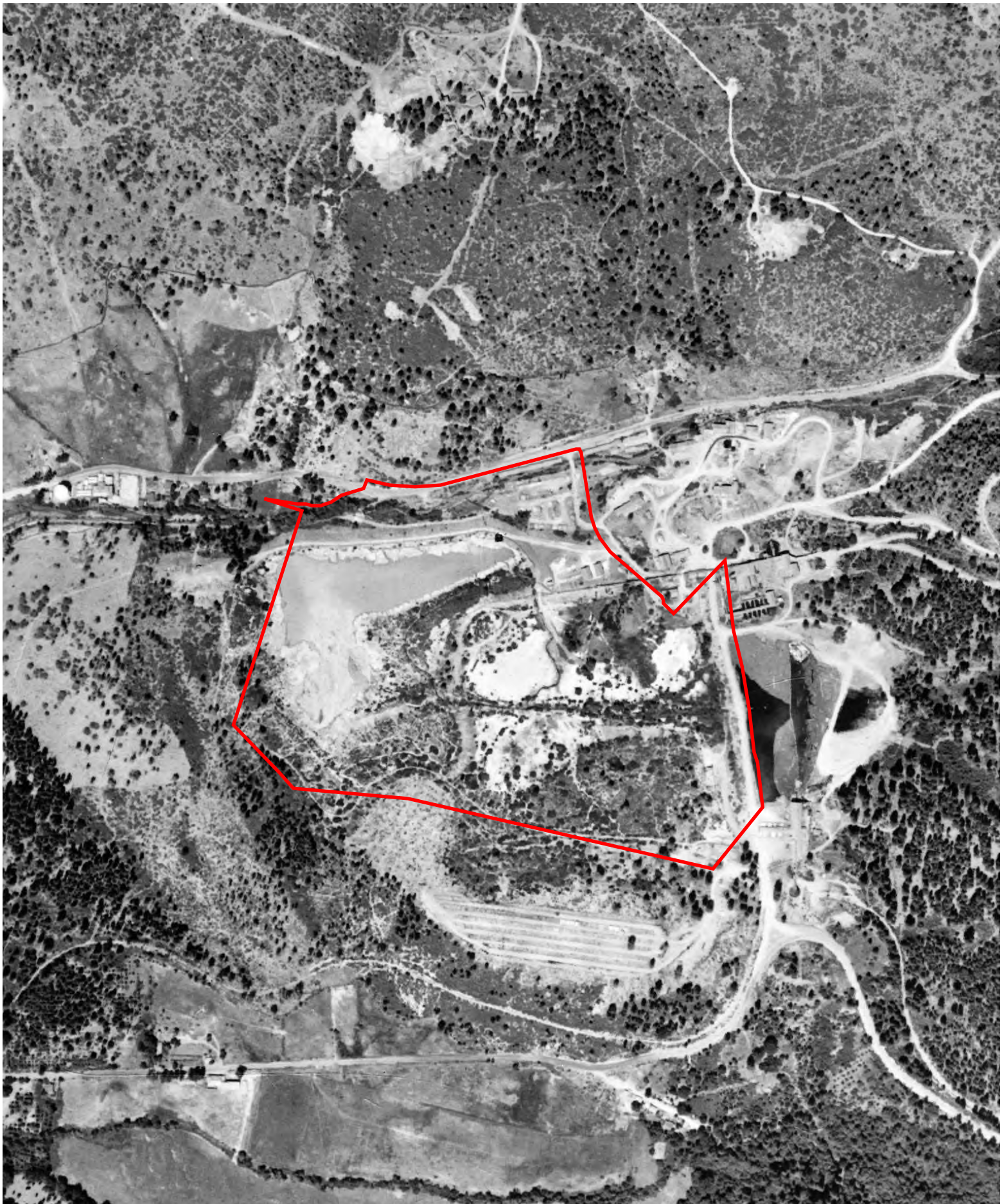


INQUIRY #: 7387294.3

YEAR: 1957

— = 500'



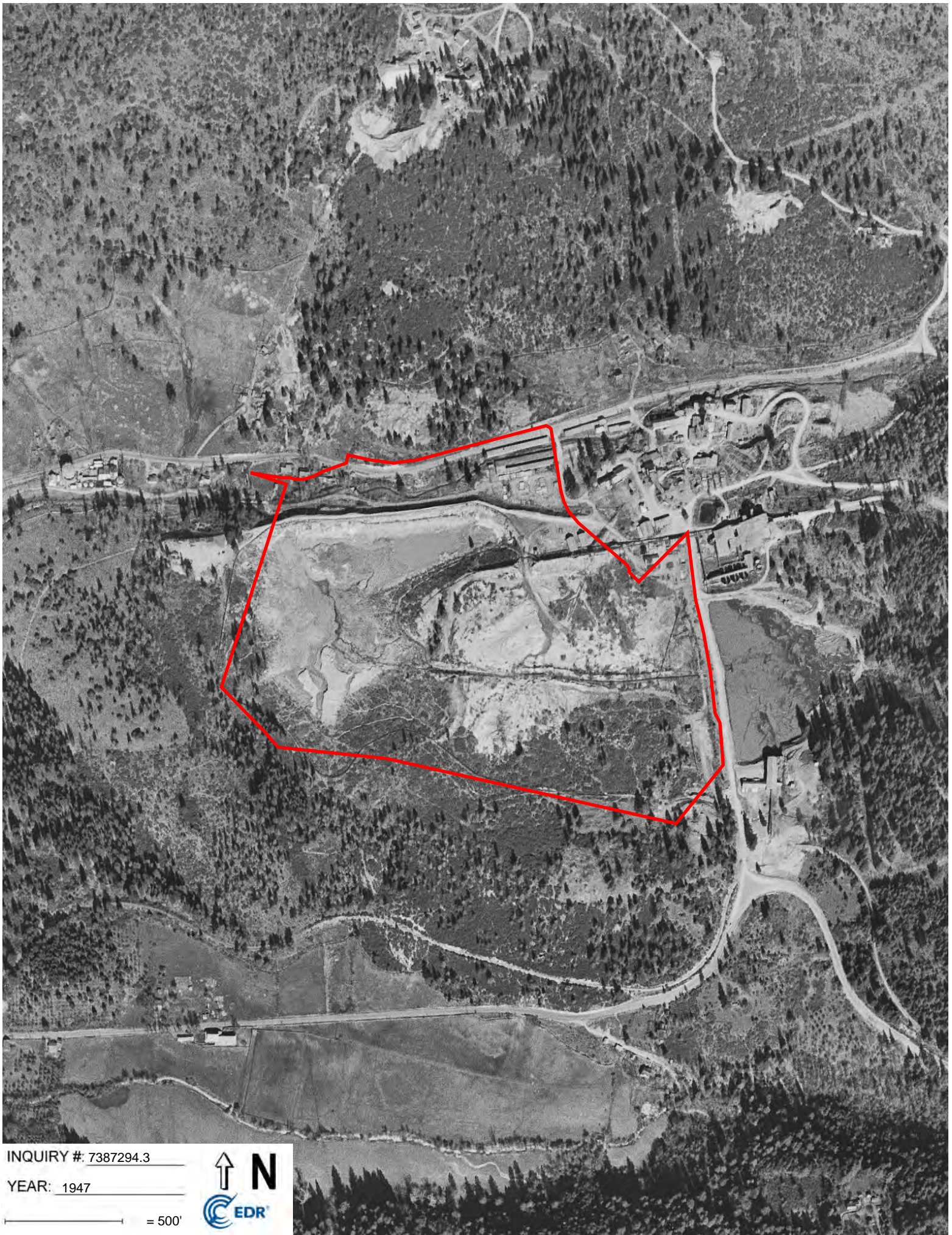


INQUIRY #: 7387294.3

YEAR: 1952

— = 500'





INQUIRY #: 7387294.3

YEAR: 1947

500'





INQUIRY #: 7387294.3

YEAR: 1939

— = 500'

