

Winter Storm Hazardous Vegetation Clean Up Project

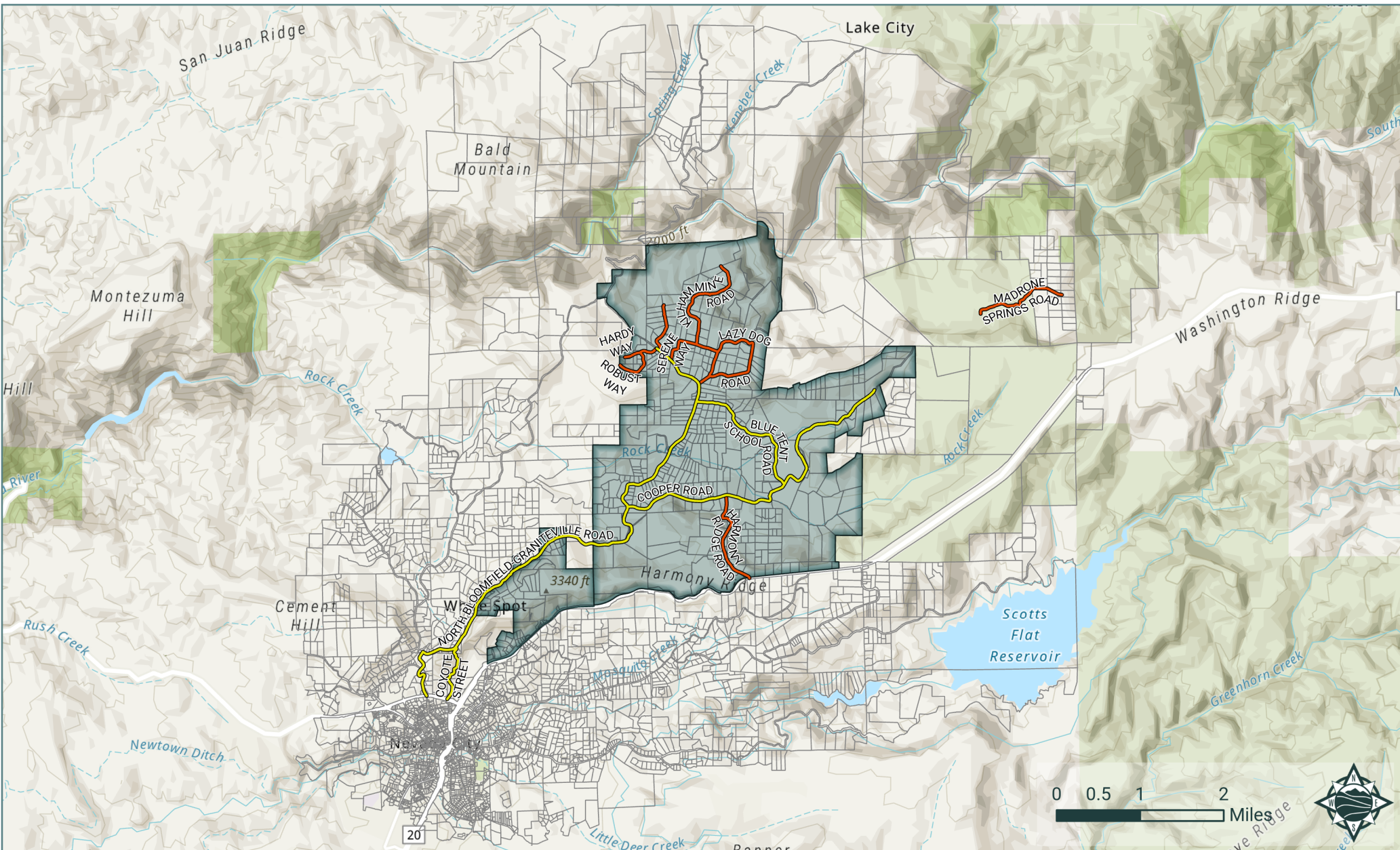
CAL FIRE Grant #5GA21159

6B & Friends Firewise Community



Legend

| | |
|---------|----------------------|
| County | Community Boundary |
| Private | Parcels within 2 mi. |

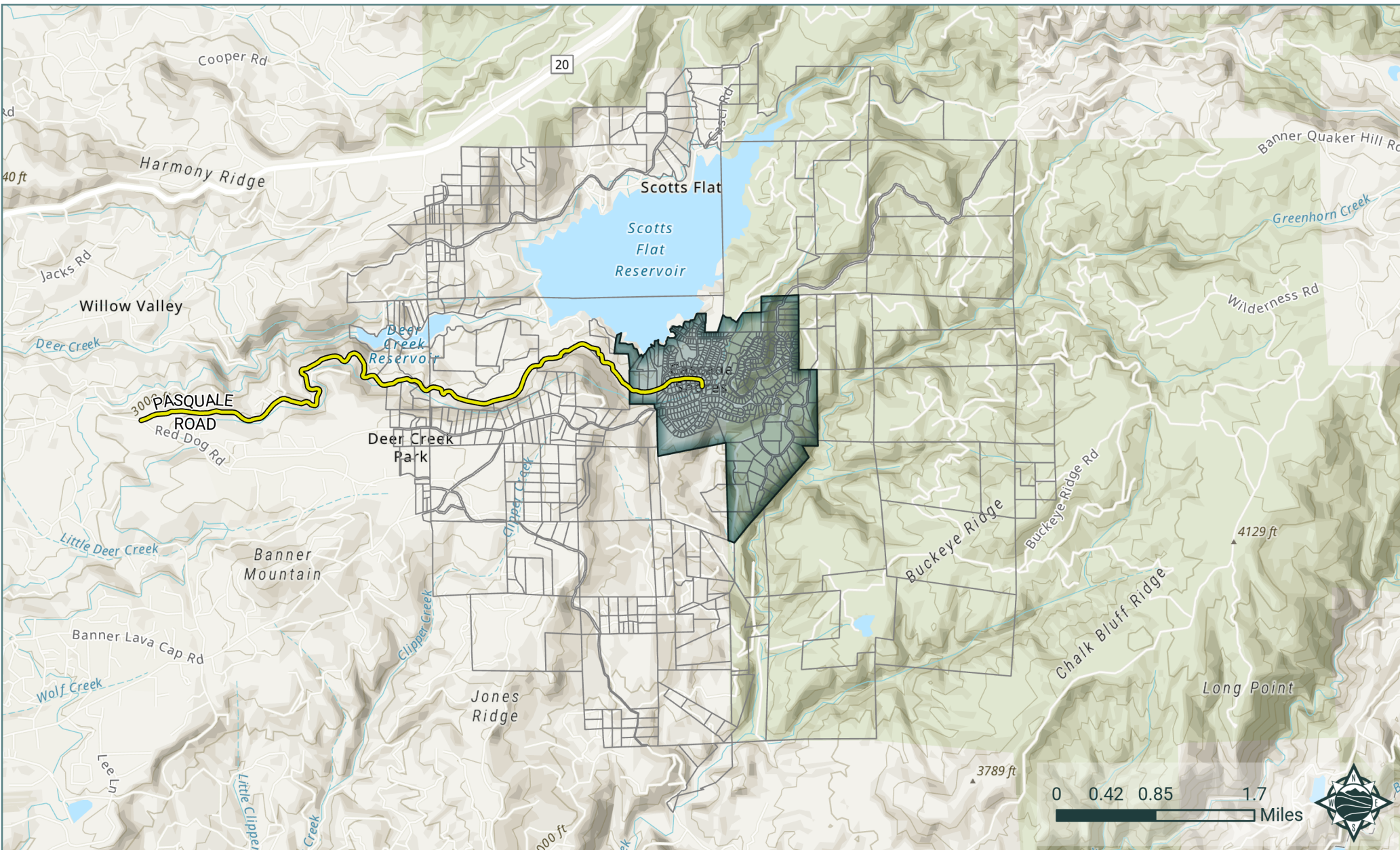


Winter Storm Hazardous Vegetation Clean Up Project
CAL FIRE Grant #5GA21159
Bloomfield & Cooper Community Area,
Harmony Firewise Communities



Legend

| | |
|-----------------|----------------------|
| Treatment Roads | Community Boundary |
| County | Community Boundary |
| Private | Parcels within 2 mi. |



Winter Storm Hazardous Vegetation Clean Up Project

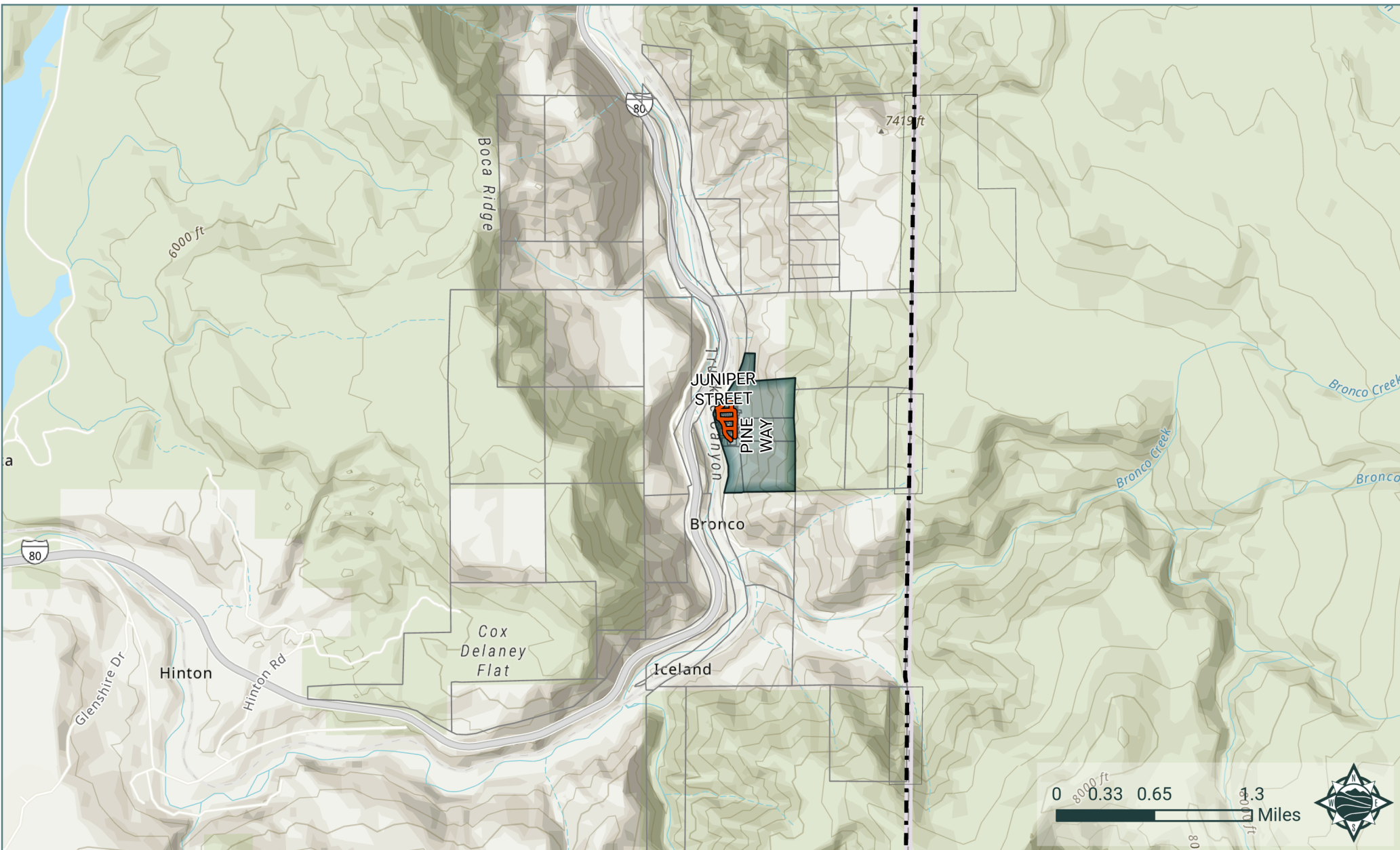
CAL FIRE Grant #5GA21159

Cascade Shores HOA Firewise Community



Legend

| | |
|-----------------|----------------------|
| Treatment Roads | Community Boundary |
| County | Parcels within 2 mi. |
| Private | |



Winter Storm Hazardous Vegetation Clean Up Project

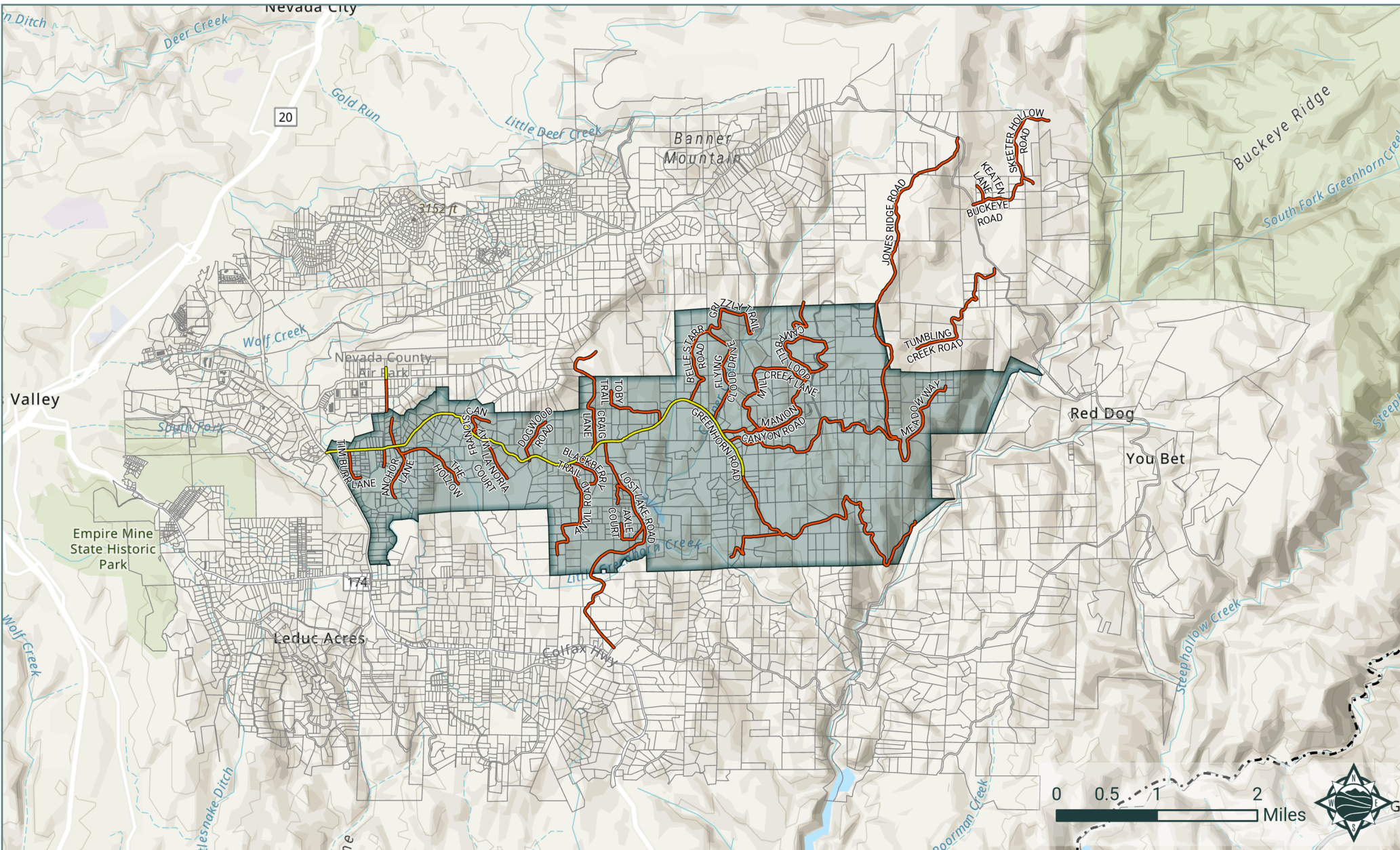
CAL FIRE Grant #5GA21159

Floriston Firewise Community



Legend

| | |
|-----------------|----------------------|
| Treatment Roads | Community Boundary |
| County | Parcels within 2 mi. |
| Private | |
| County Boundary | |



Winter Storm Hazardous Vegetation Clean Up Project

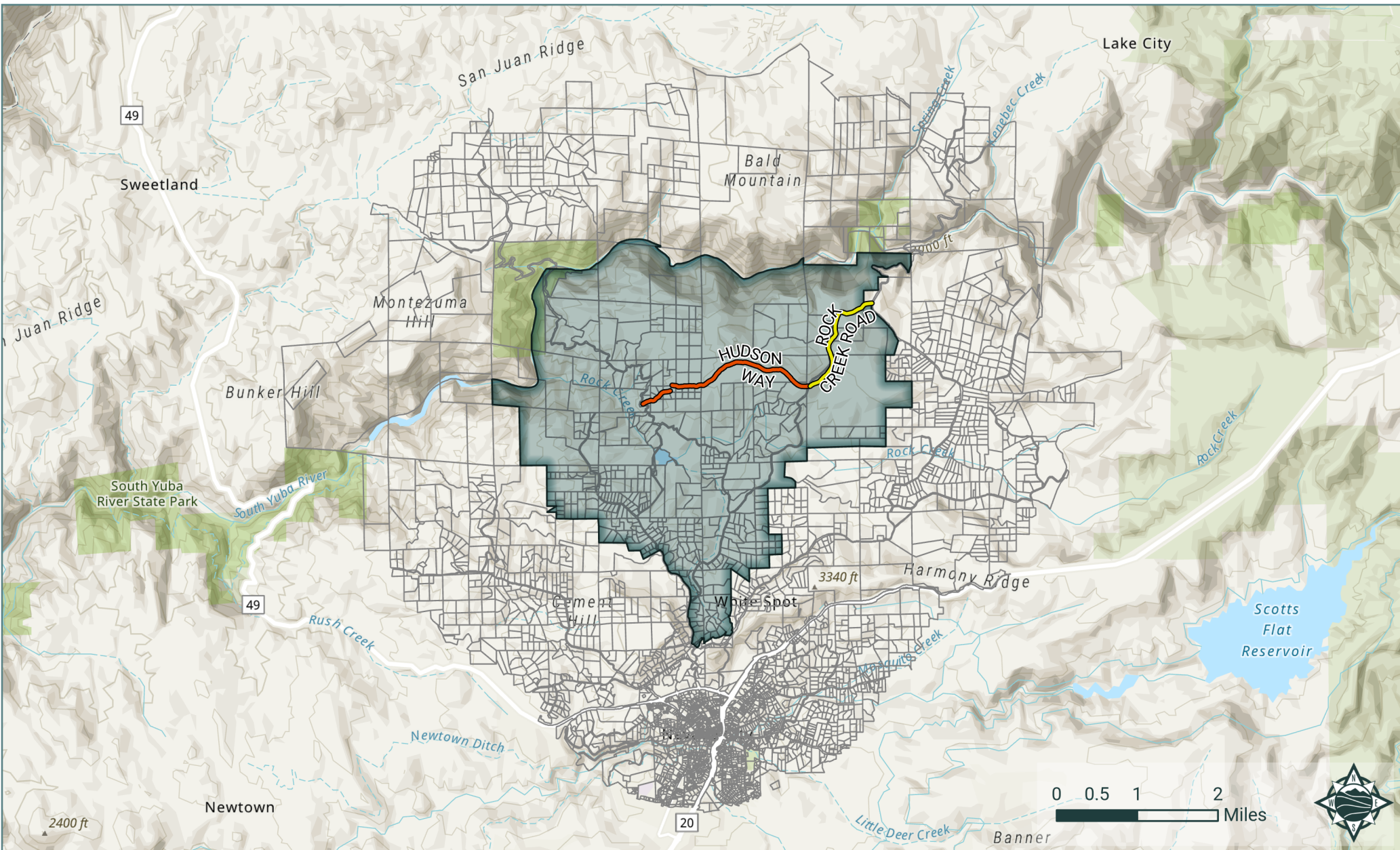
CAL FIRE Grant #5GA21159

Greenhorn Road Assoc. Firewise Community



Legend

| | |
|-----------------|----------------------|
| Treatment Roads | Community Boundary |
| County | Parcels within 2 mi. |
| Private | |
| County Boundary | |



Winter Storm Hazardous Vegetation Clean Up Project

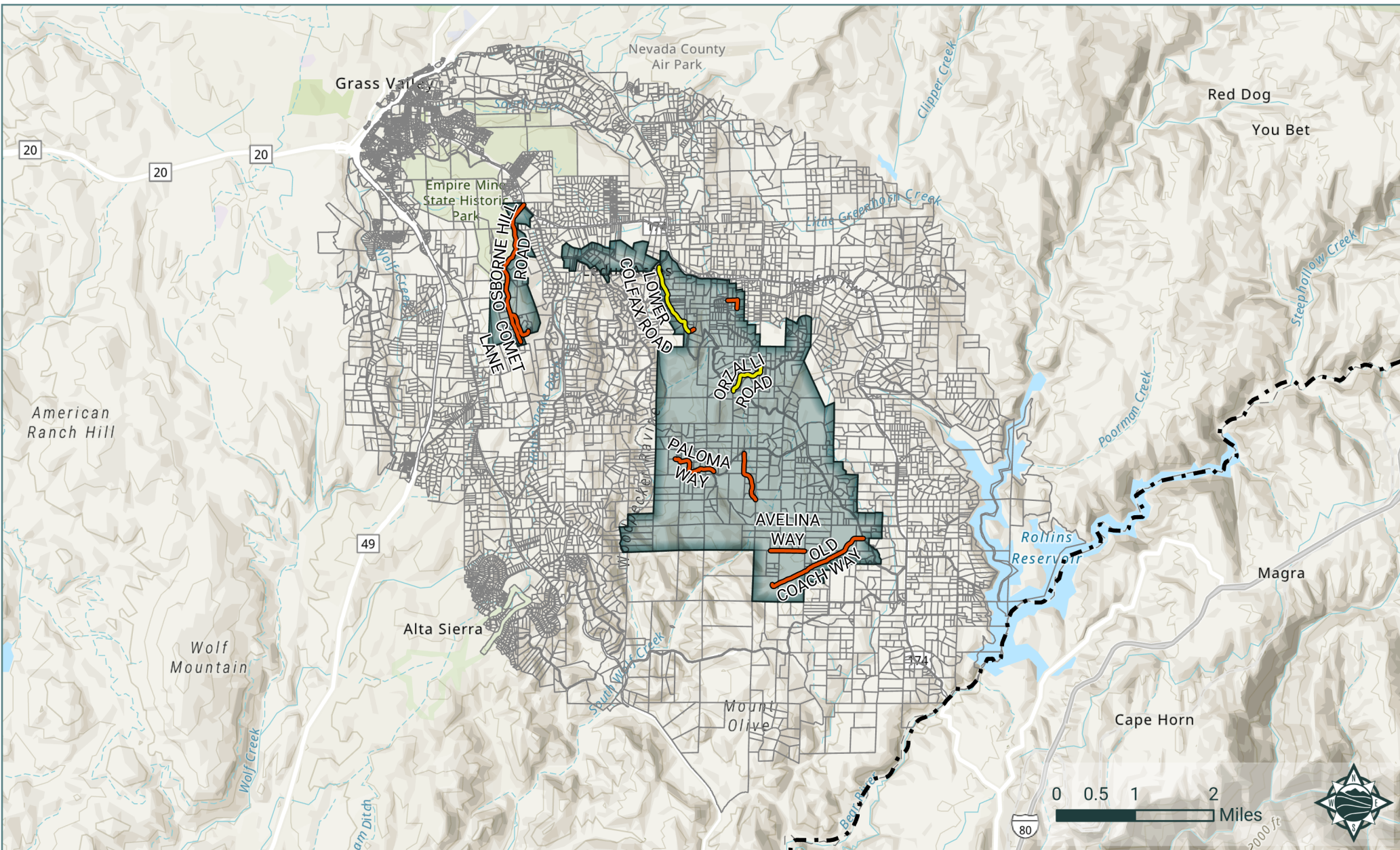
CAL FIRE Grant #5GA21159

Lake Vera/Round Mtn. Firewise Community



Legend

| | |
|-----------------------|-------------------------------------|
| Treatment Roads | Community Boundary |
| County (Yellow line) | Parcels within 2 mi. (Grey outline) |
| Private (Orange line) | |



Winter Storm Hazardous Vegetation Clean Up Project

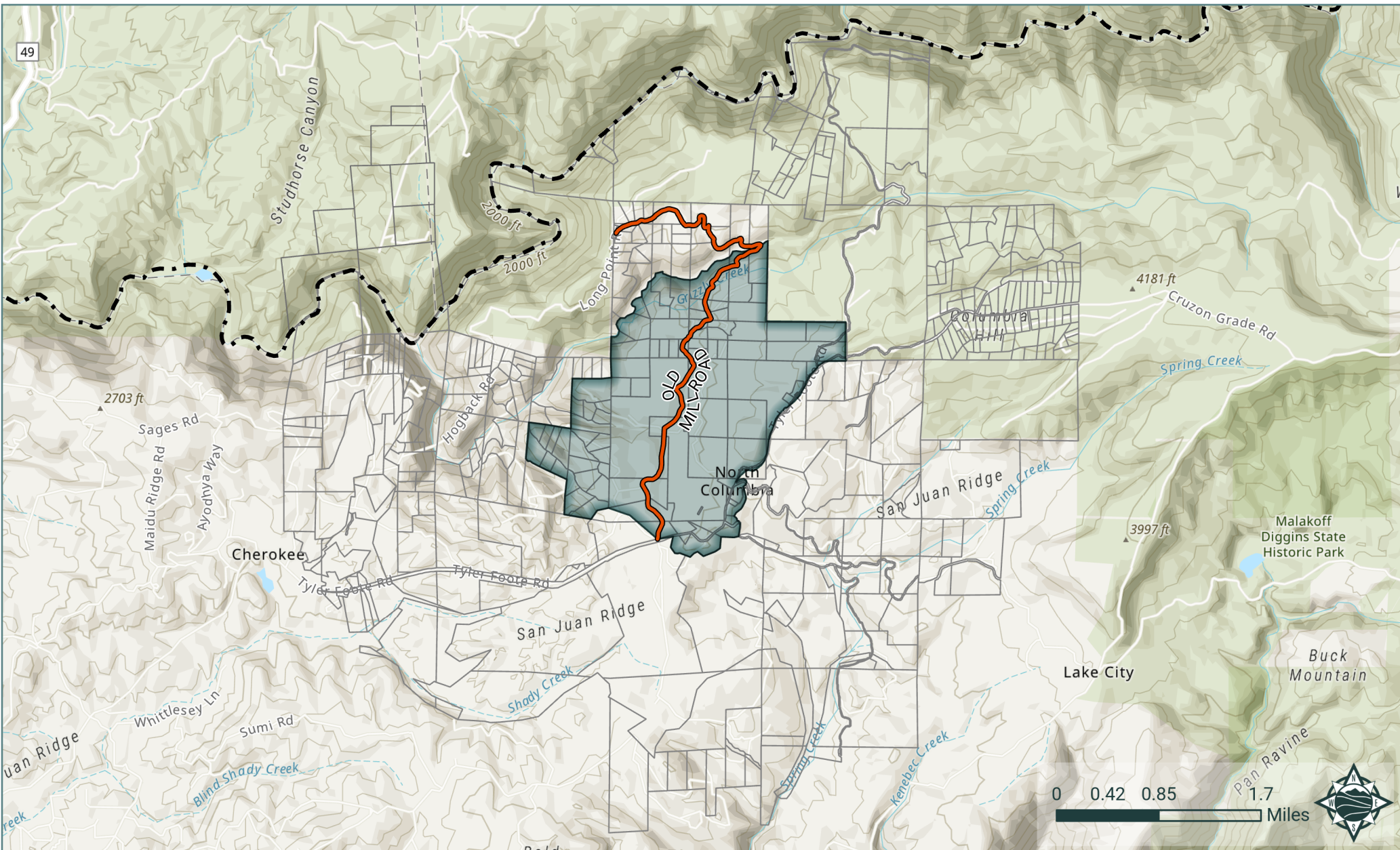
CAL FIRE Grant #5GA21159

Lower Colfax & Osborne Hill Firewise Communities



Legend

| | | | |
|---------------------------|---------|--------------------|----------------------|
| Treatment Roads County | Private | Community Boundary | Parcels within 2 mi. |
| County Boundary | | | |



Winter Storm Hazardous Vegetation Clean Up Project

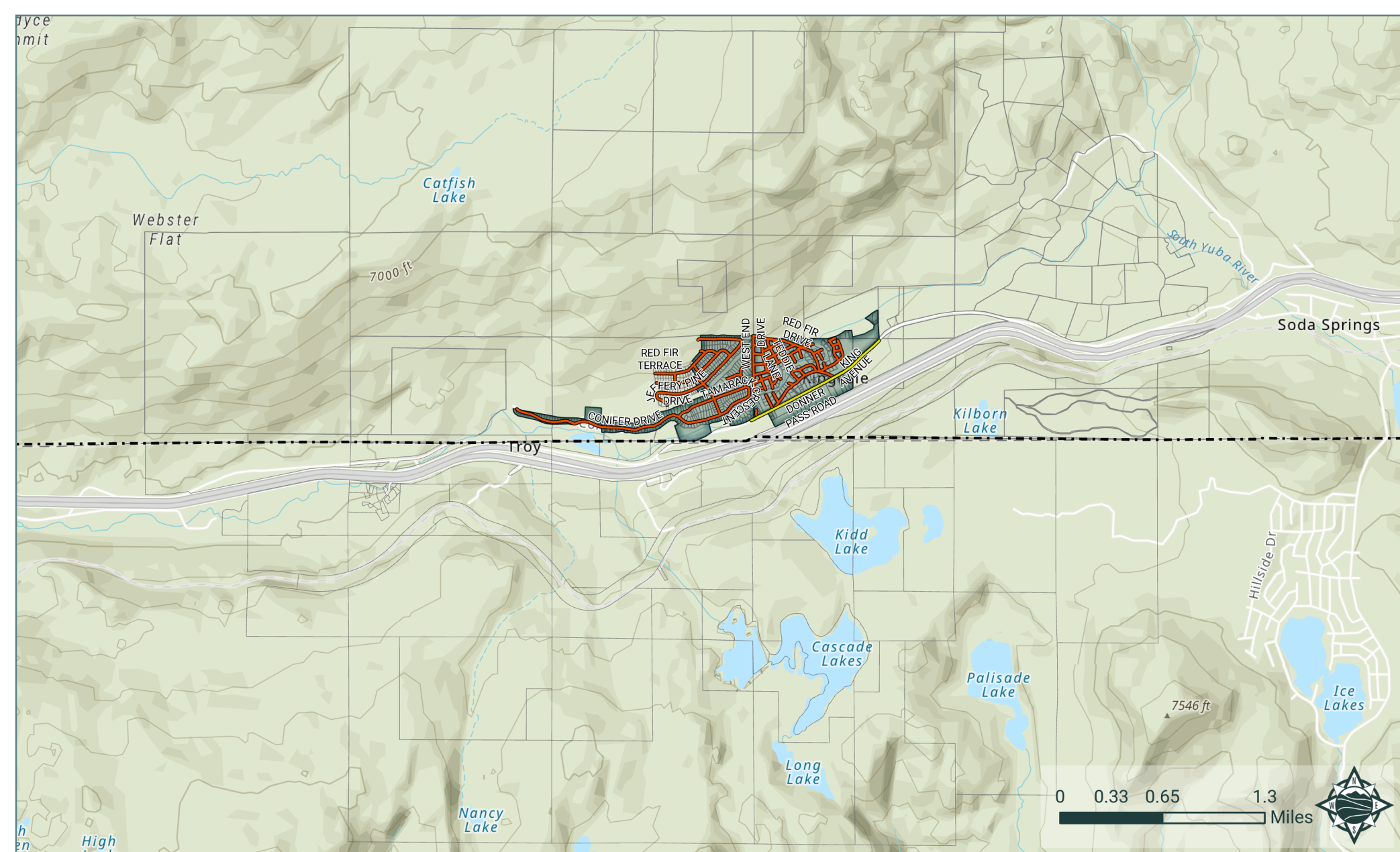
CAL FIRE Grant #5GA21159

Old Mill Firewise Community

Legend

| | |
|-----------------|----------------------|
| County | Community Boundary |
| Private | Parcels within 2 mi. |
| County Boundary | |





Winter Storm Hazardous Vegetation Clean Up Project

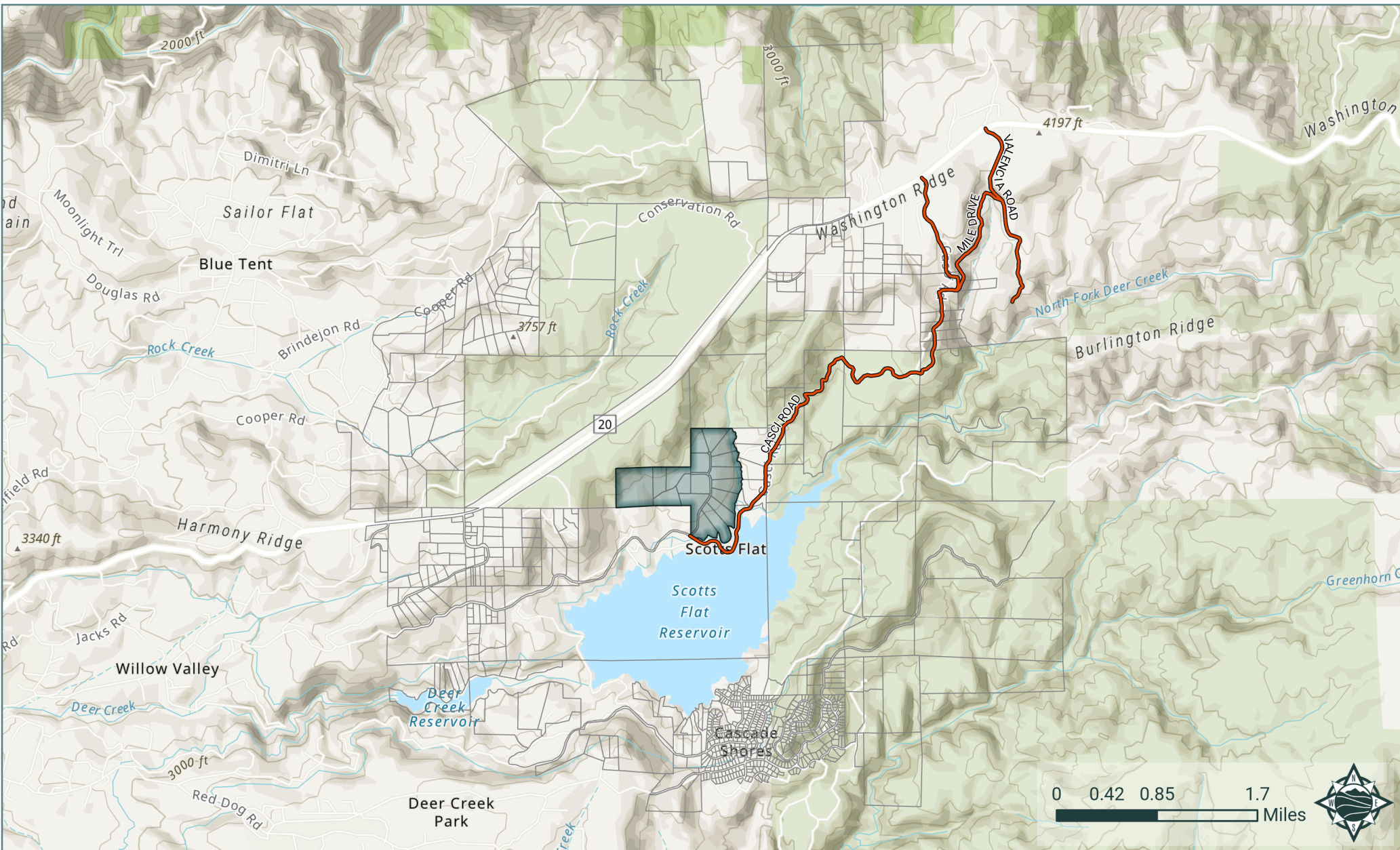
CAL FIRE Grant #5GA21159

Pla Vada & Kingvale Firewise Communities



Legend

| | |
|-----------------|----------------------|
| County | Community Boundary |
| Private | Parcels within 2 mi. |
| County Boundary | |



Winter Storm Hazardous Vegetation Clean Up Project

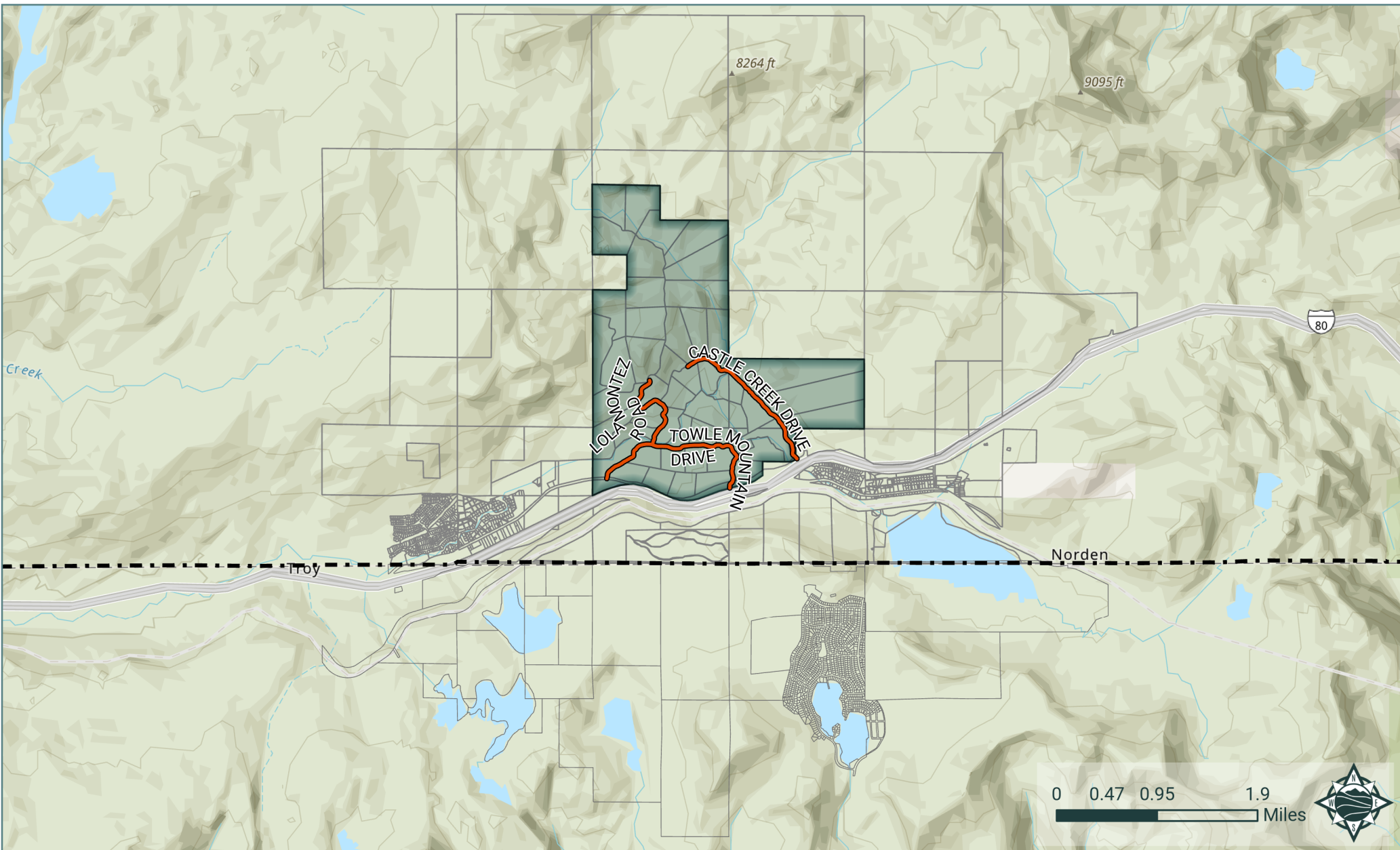
CAL FIRE Grant #5GA21159

Scotts Flat Pine Firewise Community



Legend

| | |
|-----------------|----------------------|
| Treatment Roads | Community Boundary |
| County | Parcels within 2 mi. |
| Private | |



Winter Storm Hazardous Vegetation Clean Up Project

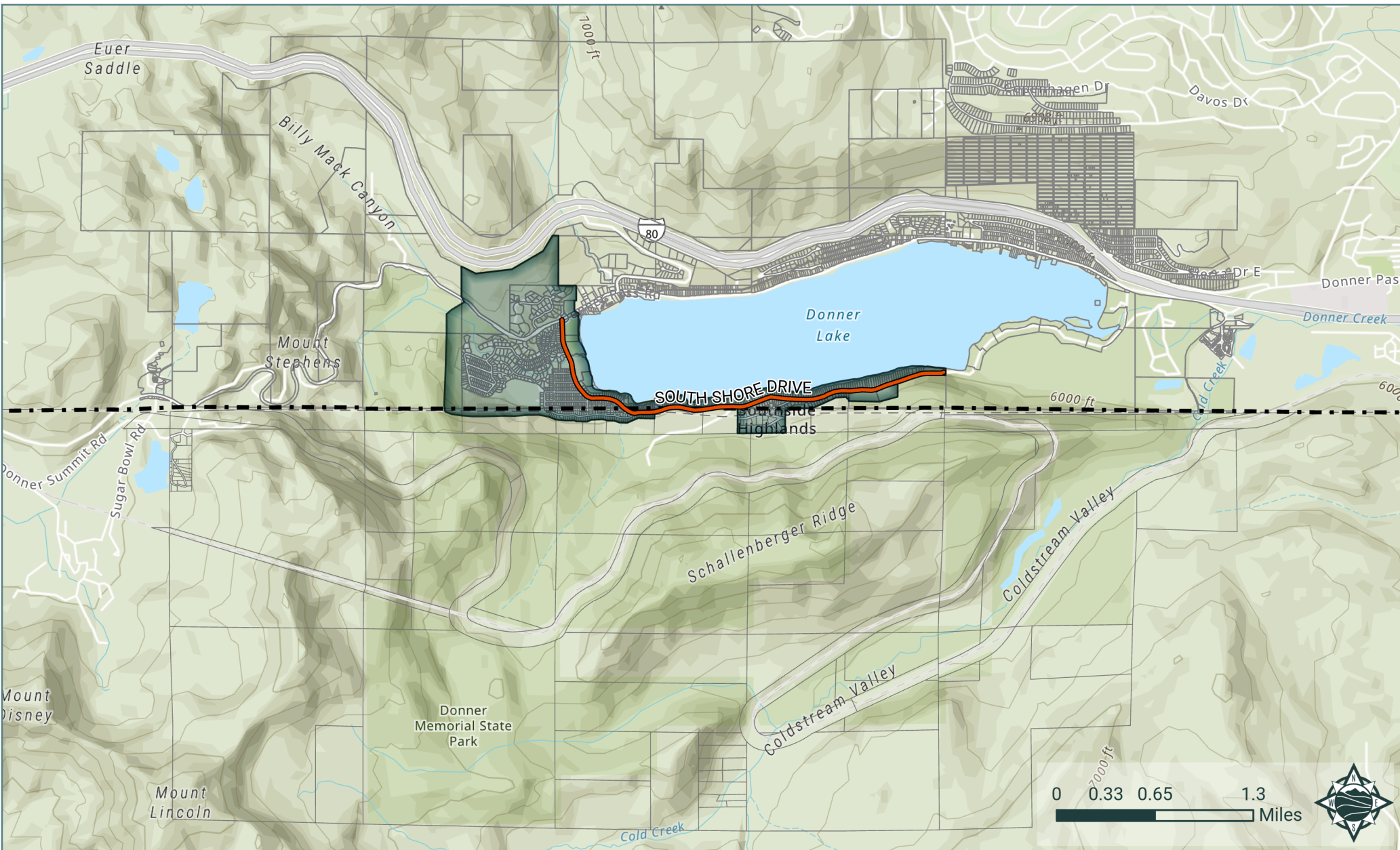
CAL FIRE Grant #5GA21159

Towle Mountain Firewise Community



Legend

-  County
-  Private
-  County Boundary
-  Community Boundary
-  Parcels within 2 mi.



Winter Storm Hazardous Vegetation Clean Up Project

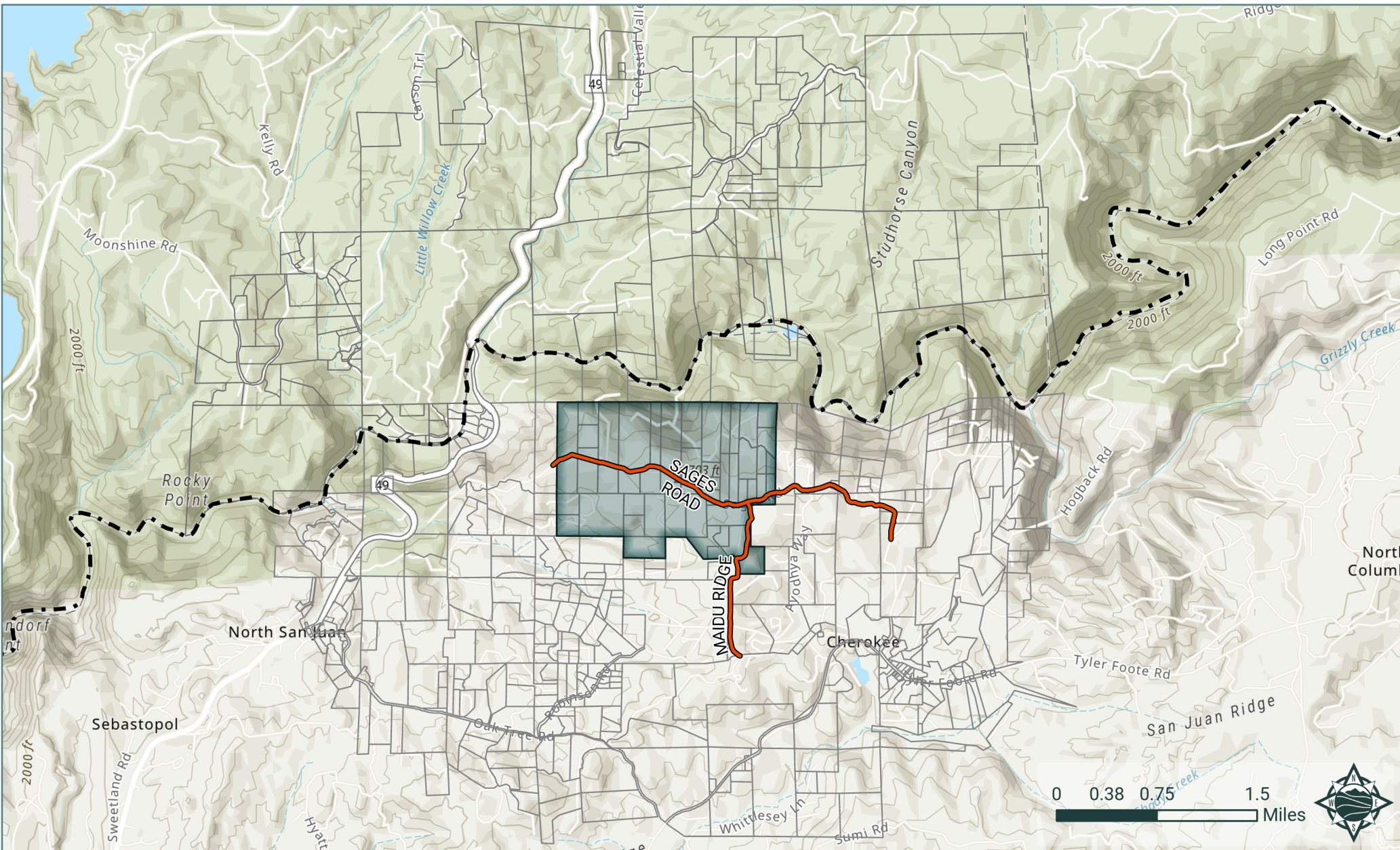
CAL FIRE Grant #5GA21159

West End Donner Lake Firewise Community



Legend

| | |
|-----------------|----------------------|
| County | Community Boundary |
| Private | Parcels within 2 mi. |
| County Boundary | |



Winter Storm Hazardous Vegetation Clean Up Project

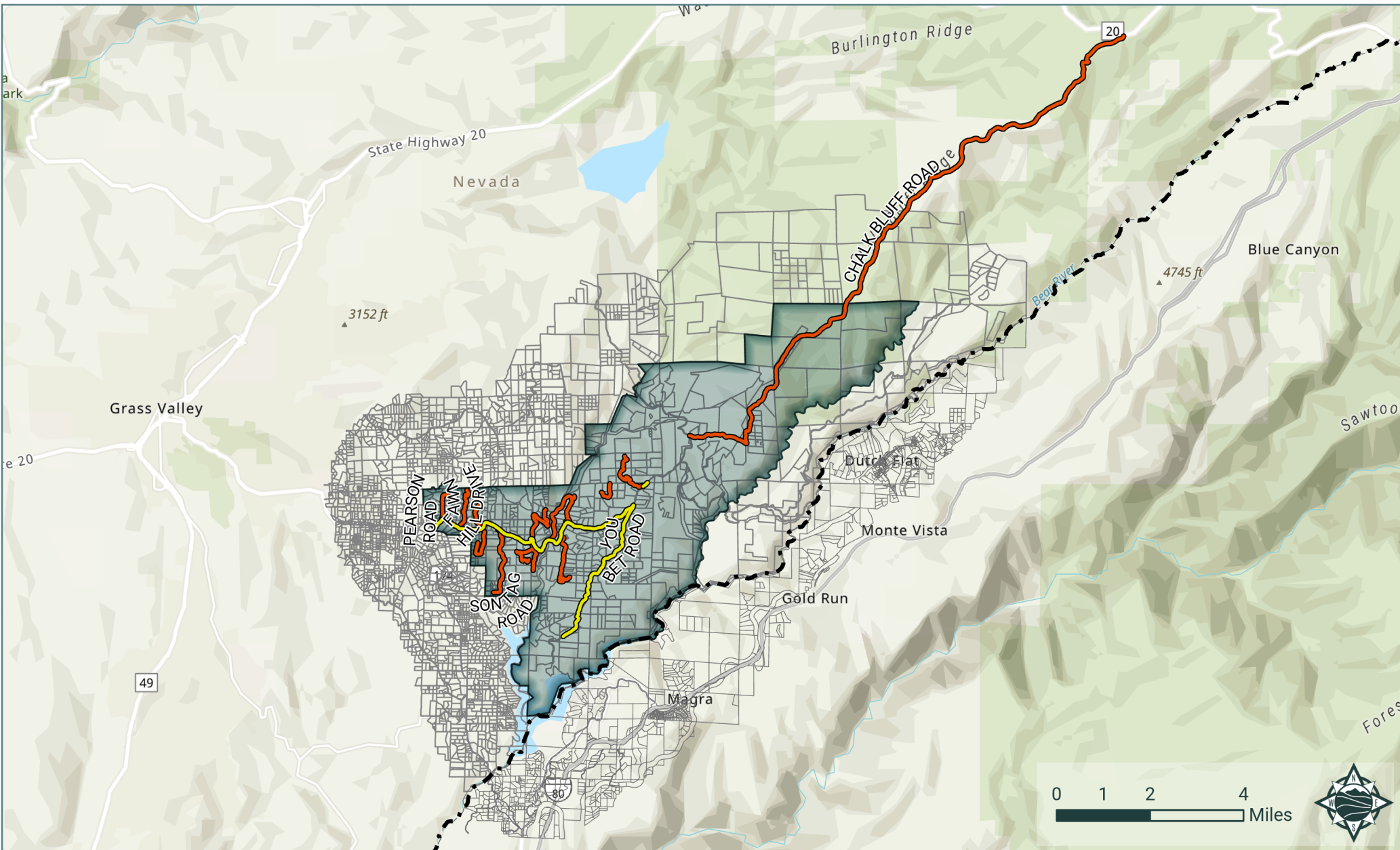
CAL FIRE Grant #5GA21159

West Sages Firewise Community



Legend

| | |
|-------------------------|----------------------|
| County Treatment Roads | Community Boundary |
| Private Treatment Roads | Parcels within 2 mi. |
| County Boundary | |



Winter Storm Hazardous Vegetation Clean Up Project

CAL FIRE Grant #5GA21159

You Bet Firewise Community



Legend

| | |
|-----------------|----------------------|
| County | Community Boundary |
| Private | Parcels within 2 mi. |
| County Boundary | |