



**THE NCS**<sup>TM</sup>  
The National Citizen Survey<sup>TM</sup>

## Nevada County, CA

Technical Appendices

DRAFT

2017



2955 Valmont Road Suite 300  
Boulder, Colorado 80301  
n-r-c.com • 303-444-7863



777 North Capitol Street NE Suite 500  
Washington, DC 20002  
icma.org • 800-745-8780

# Contents

Appendix A: Complete Survey Responses .....	1
Appendix B: Benchmark Comparisons .....	25
Appendix C: Detailed Survey Methods .....	34
Appendix D: Survey Materials .....	39



The National Citizen Survey™  
© 2001-2017 National Research Center, Inc.

The NCS™ is presented by NRC in collaboration with ICMA.

NRC is a charter member of the AAPOR Transparency Initiative, providing clear disclosure of our sound and ethical survey research practices.

# Appendix A: Complete Survey Responses

## Responses excluding “don’t know”

The following pages contain a complete set of responses to each question on the survey, excluding the “don’t know” responses. The percent of respondents giving a particular response is shown followed by the number of respondents (denoted with “N=”).

Table 1: Question 1

Please rate each of the following aspects of quality of life in Nevada County:	Excellent		Good		Fair		Poor		Total	
	%	N	%	N	%	N	%	N	%	N
Nevada County as a place to live	41%	N=217	53%	N=286	6%	N=30	0%	N=1	100%	N=535
Your neighborhood as a place to live	47%	N=252	43%	N=233	9%	N=46	1%	N=4	100%	N=536
Nevada County as a place to raise children	35%	N=162	48%	N=218	15%	N=71	1%	N=6	100%	N=457
Nevada County as a place to work	12%	N=58	26%	N=119	40%	N=186	22%	N=105	100%	N=468
Nevada County as a place to visit	60%	N=319	34%	N=178	6%	N=30	0%	N=2	100%	N=529
Nevada County as a place to retire	43%	N=218	38%	N=189	15%	N=76	4%	N=18	100%	N=501
The overall quality of life in Nevada County	36%	N=190	53%	N=282	11%	N=57	0%	N=1	100%	N=530

Table 2: Question 2

Please rate each of the following characteristics as they relate to Nevada County as a whole:	Excellent		Good		Fair		Poor		Total	
	%	N	%	N	%	N	%	N	%	N
Overall feeling of safety in Nevada County	26%	N=136	56%	N=300	16%	N=86	2%	N=11	100%	N=534
Overall ease of getting to the places you usually have to visit	26%	N=137	52%	N=277	16%	N=84	7%	N=36	100%	N=534
Quality of overall natural environment in Nevada County	55%	N=289	39%	N=208	5%	N=25	1%	N=6	100%	N=528
Overall “built environment” of Nevada County (including overall design, buildings, parks and transportation systems)	10%	N=53	48%	N=256	37%	N=196	4%	N=23	100%	N=528
Health and wellness opportunities in Nevada County	21%	N=106	42%	N=214	30%	N=150	7%	N=34	100%	N=505
Overall opportunities for education and enrichment	15%	N=74	50%	N=255	29%	N=147	6%	N=30	100%	N=506
Overall economic health of Nevada County	8%	N=38	38%	N=183	46%	N=221	9%	N=43	100%	N=485
Sense of community	27%	N=143	49%	N=259	21%	N=111	3%	N=14	100%	N=527
Overall image or reputation of Nevada County	27%	N=137	53%	N=272	18%	N=92	3%	N=14	100%	N=514

Table 3: Question 3

Please indicate how likely or unlikely you are to do each of the following:	Very likely		Somewhat likely		Somewhat unlikely		Very unlikely		Total	
	%	N	%	N	%	N	%	N	%	N
Recommend living in Nevada County to someone who asks	47%	N=252	46%	N=245	4%	N=24	3%	N=14	100%	N=534
Remain in Nevada County for the next five years	71%	N=363	23%	N=117	4%	N=23	2%	N=11	100%	N=514
Remain in Nevada County for the next 12 months	88%	N=468	10%	N=51	2%	N=8	0%	N=2	100%	N=529

Table 4: Question 4

Please rate how safe or unsafe you feel:	Very safe		Somewhat safe		Neither safe nor unsafe		Somewhat unsafe		Very unsafe		Total	
	%	N	%	N	%	N	%	N	%	N	%	N
In your neighborhood during the day	79%	N=420	18%	N=97	2%	N=11	1%	N=6	0%	N=1	100%	N=535
In Nevada County’s downtown/commercial areas during the day	59%	N=313	33%	N=174	5%	N=27	3%	N=13	0%	N=1	100%	N=529
In Nevada County’s downtown/commercial areas at night	30%	N=152	42%	N=215	13%	N=65	12%	N=62	3%	N=14	100%	N=508

The National Citizen Survey™

Table 5: Question 5

Please rate each of the following characteristics as they relate to Nevada County as a whole:	Excellent		Good		Fair		Poor		Total	
Traffic flow on major streets	10%	N=54	48%	N=254	32%	N=168	10%	N=55	100%	N=531
Ease of travel by car in Nevada County	20%	N=105	54%	N=288	21%	N=114	5%	N=28	100%	N=535
Ease of travel by public transportation in Nevada County	6%	N=18	17%	N=49	36%	N=102	40%	N=114	100%	N=283
Ease of travel by bicycle in Nevada County	6%	N=22	28%	N=98	36%	N=127	30%	N=105	100%	N=352
Ease of walking in Nevada County	16%	N=81	39%	N=194	33%	N=167	12%	N=60	100%	N=500
Availability of paths and walking trails	28%	N=142	43%	N=219	23%	N=116	6%	N=28	100%	N=506
Air quality	24%	N=126	52%	N=270	18%	N=96	6%	N=32	100%	N=524
Public places where people want to spend time	23%	N=121	44%	N=225	28%	N=144	5%	N=26	100%	N=516
Variety of housing options	8%	N=39	20%	N=100	35%	N=171	36%	N=178	100%	N=487
Availability of affordable quality housing	5%	N=21	15%	N=70	27%	N=124	54%	N=251	100%	N=466
Fitness opportunities (including exercise classes and paths or trails, etc.)	40%	N=202	43%	N=221	15%	N=75	3%	N=13	100%	N=511
Recreational opportunities	46%	N=235	41%	N=213	11%	N=59	2%	N=9	100%	N=517
Availability of affordable quality food	26%	N=138	46%	N=243	21%	N=110	8%	N=43	100%	N=534
Availability of affordable quality health care	13%	N=63	34%	N=164	38%	N=187	15%	N=74	100%	N=489
Availability of preventive health services	17%	N=77	38%	N=174	34%	N=156	11%	N=50	100%	N=457
Availability of affordable quality mental health care	15%	N=42	29%	N=79	32%	N=86	24%	N=66	100%	N=273
Access to specialty health care (primary doctor, healthcare specialist, dentist, etc.)	12%	N=61	31%	N=155	32%	N=157	24%	N=120	100%	N=492

Table 6: Question 6

Please rate each of the following characteristics as they relate to Nevada County as a whole:	Excellent		Good		Fair		Poor		Total	
Availability of affordable quality child care/preschool	9%	N=20	49%	N=103	30%	N=63	12%	N=26	100%	N=212
K-12 education	22%	N=75	53%	N=184	23%	N=79	3%	N=10	100%	N=348
Adult educational opportunities	14%	N=55	46%	N=178	33%	N=128	7%	N=26	100%	N=387
Opportunities to attend cultural/arts/music activities	41%	N=202	44%	N=216	13%	N=65	2%	N=10	100%	N=493
Opportunities to participate in religious or spiritual events and activities	37%	N=146	51%	N=204	11%	N=44	1%	N=4	100%	N=397
Employment opportunities	3%	N=13	16%	N=70	42%	N=183	40%	N=174	100%	N=440
Shopping opportunities	9%	N=46	34%	N=181	42%	N=222	15%	N=79	100%	N=527
Cost of living in Nevada County	4%	N=23	23%	N=121	47%	N=243	26%	N=134	100%	N=521
Overall quality of business and service establishments in Nevada County	10%	N=52	52%	N=270	35%	N=182	3%	N=16	100%	N=519
Opportunities to participate in social events and activities	32%	N=160	49%	N=242	18%	N=92	1%	N=5	100%	N=499
Opportunities to volunteer	45%	N=218	47%	N=228	6%	N=28	1%	N=7	100%	N=481
Opportunities to participate in community matters	32%	N=146	52%	N=240	14%	N=66	2%	N=9	100%	N=461
Openness and acceptance of the community toward people of diverse backgrounds	16%	N=74	42%	N=199	32%	N=150	11%	N=52	100%	N=476
Neighborliness of residents in Nevada County	20%	N=103	57%	N=291	20%	N=103	3%	N=14	100%	N=511
Access to food and beverage establishments (wineries, breweries, and restaurants)	32%	N=171	50%	N=264	15%	N=81	2%	N=13	100%	N=528
Access to organic food	43%	N=202	45%	N=210	11%	N=51	2%	N=8	100%	N=470

The National Citizen Survey™

Table 7: Question 7

Please indicate whether or not you have done each of the following in the last 12 months.	No		Yes		Total	
	%	N	%	N	%	N
Made efforts to conserve water	6%	N=32	94%	N=503	100%	N=535
Made efforts to make your home more energy efficient	20%	N=104	80%	N=429	100%	N=533
Observed a code violation or other hazard in Nevada County (weeds, abandoned buildings or cars, etc.)	39%	N=208	61%	N=322	100%	N=530
Household member was a victim of a crime in Nevada County	90%	N=479	10%	N=54	100%	N=532
Reported a crime to the Sheriff in Nevada County	82%	N=434	18%	N=97	100%	N=532
Stocked supplies in preparation for an emergency	53%	N=282	47%	N=250	100%	N=533
Campaigned or advocated for an issue, cause or candidate	62%	N=333	38%	N=202	100%	N=535
Contacted Nevada County (in-person, phone, email or web) for help or information	59%	N=312	41%	N=221	100%	N=533
Contacted Nevada County elected officials (in-person, phone, email or web) to express your opinion	75%	N=402	25%	N=131	100%	N=533
Utilized the recycling facility at the McCourtney Road Transfer Station	37%	N=195	63%	N=338	100%	N=533
Visited the County website MyNevadaCounty.com	45%	N=242	55%	N=292	100%	N=535
Visited the County tourism website GoNevadaCounty.com	80%	N=425	20%	N=107	100%	N=532
Visited County social media sites (Facebook, Twitter, etc.) for information on services	65%	N=347	35%	N=187	100%	N=533
Accessed County services online (pay taxes, book community rooms, building permits, etc.)	66%	N=352	34%	N=181	100%	N=533

Table 8: Question 8

In the last 12 months, about how many times, if at all, have you or other household members done each of the following in Nevada County?	2 times a week or more		2-4 times a month		Once a month or less		Not at all		Total	
	%	N	%	N	%	N	%	N	%	N
Visited a community park	16%	N=87	28%	N=152	43%	N=227	13%	N=67	100%	N=533
Used Nevada County public libraries or their services	4%	N=22	18%	N=97	34%	N=181	44%	N=233	100%	N=533
Participated in religious or spiritual activities in Nevada County	12%	N=65	17%	N=88	16%	N=85	55%	N=291	100%	N=529
Attended a County-sponsored event	1%	N=5	6%	N=33	46%	N=242	47%	N=251	100%	N=531
Used bus transportation instead of driving	2%	N=11	1%	N=7	5%	N=27	92%	N=486	100%	N=531
Carpooled with other adults or children instead of driving alone	14%	N=73	18%	N=98	24%	N=126	44%	N=233	100%	N=530
Walked or biked instead of driving	14%	N=76	17%	N=89	26%	N=138	43%	N=232	100%	N=535
Volunteered your time to some group/activity in Nevada County	10%	N=53	22%	N=115	31%	N=165	37%	N=199	100%	N=532
Participated in a club	8%	N=44	19%	N=99	22%	N=117	51%	N=269	100%	N=529
Talked to or visited with your immediate neighbors	46%	N=242	30%	N=159	20%	N=109	4%	N=21	100%	N=531
Done a favor for a neighbor	23%	N=121	33%	N=171	36%	N=187	9%	N=46	100%	N=526
Utilized a recycling facility other than the transfer station to recycle: batteries, light bulbs, commingle [paper/plastic], mattresses, beverage containers, etc.	7%	N=36	17%	N=89	42%	N=221	34%	N=181	100%	N=527

Table 9: Question 9

Thinking about local public meetings (of local elected officials like County Council or County Commissioners, advisory boards, town halls, HOA, neighborhood watch, etc.), in the last 12 months, about how many times, if at all, have you or other household members attended or watched a local public meeting?	2 times a week or more		2-4 times a month		Once a month or less		Not at all		Total	
	%	N	%	N	%	N	%	N	%	N
Attended a local public meeting	0%	N=1	4%	N=19	26%	N=140	70%	N=369	100%	N=529
Watched (online or on television) a local public meeting	0%	N=3	3%	N=15	17%	N=89	80%	N=425	100%	N=532

The National Citizen Survey™

Table 10: Question 10

Please rate the quality of each of the following services in Nevada County:	Excellent		Good		Fair		Poor		Total	
	%	N	%	N	%	N	%	N	%	N
Sheriff services	25%	N=104	55%	N=229	18%	N=75	2%	N=9	100%	N=417
Crime prevention	12%	N=49	51%	N=199	29%	N=114	8%	N=32	100%	N=393
Fire prevention and education	27%	N=124	55%	N=254	16%	N=74	2%	N=11	100%	N=464
Traffic enforcement	11%	N=52	49%	N=227	32%	N=146	8%	N=36	100%	N=461
Street repair	4%	N=22	21%	N=109	35%	N=183	39%	N=204	100%	N=518
Street cleaning	8%	N=38	41%	N=187	39%	N=178	11%	N=51	100%	N=454
Snow removal	17%	N=69	54%	N=221	24%	N=100	5%	N=19	100%	N=409
Bus or transit services	7%	N=17	30%	N=73	37%	N=91	26%	N=65	100%	N=246
Garbage collection	30%	N=151	50%	N=248	15%	N=74	4%	N=21	100%	N=495
Recycling	26%	N=132	47%	N=245	16%	N=84	11%	N=55	100%	N=515
Yard waste pick-up	27%	N=101	46%	N=171	19%	N=71	8%	N=29	100%	N=372
Storm drainage	13%	N=53	44%	N=177	34%	N=137	8%	N=33	100%	N=400
Sewer services	20%	N=54	56%	N=147	22%	N=57	2%	N=6	100%	N=264
Recreation programs or classes	19%	N=66	51%	N=173	26%	N=88	4%	N=12	100%	N=339
Recreation centers or facilities	17%	N=62	45%	N=167	30%	N=113	8%	N=30	100%	N=372
Land use, planning and zoning	5%	N=16	36%	N=115	40%	N=128	19%	N=59	100%	N=319
Code enforcement (weeds, abandoned buildings or cars, etc.)	9%	N=30	29%	N=101	42%	N=149	20%	N=72	100%	N=352
Animal control	12%	N=41	53%	N=182	26%	N=89	9%	N=31	100%	N=342
Economic development	8%	N=27	26%	N=87	45%	N=153	22%	N=74	100%	N=340
Health services	11%	N=49	40%	N=172	38%	N=162	10%	N=45	100%	N=428
Public library services	27%	N=103	57%	N=217	13%	N=50	3%	N=10	100%	N=379
Public information services	11%	N=35	56%	N=187	30%	N=101	3%	N=9	100%	N=332
Emergency preparedness (services that prepare the community for natural disasters or other emergency situations)	15%	N=40	46%	N=127	31%	N=86	8%	N=21	100%	N=274
Preservation of natural areas such as open space, farmlands and greenbelts	18%	N=76	50%	N=210	24%	N=103	8%	N=34	100%	N=424
Overall customer service by Nevada County employees (receptionists, planners, Sheriff, etc.)	21%	N=86	54%	N=221	22%	N=92	3%	N=13	100%	N=412

Table 11: Question 11

Overall, how would you rate the quality of the services provided by each of the following?	Excellent		Good		Fair		Poor		Total	
	%	N	%	N	%	N	%	N	%	N
Nevada County	14%	N=68	62%	N=300	23%	N=112	2%	N=7	100%	N=487
The Federal Government	4%	N=16	25%	N=107	39%	N=169	32%	N=136	100%	N=427
The State Government	5%	N=22	34%	N=150	36%	N=159	24%	N=107	100%	N=437

Table 12: Question 12

Please rate the following categories of Nevada County government performance:	Excellent		Good		Fair		Poor		Total	
	%	N	%	N	%	N	%	N	%	N
The value of services for the taxes paid to Nevada County	4%	N=19	42%	N=184	41%	N=180	13%	N=59	100%	N=442
The overall direction that Nevada County is taking	3%	N=14	39%	N=170	41%	N=180	16%	N=69	100%	N=433
The job Nevada County government does at welcoming citizen involvement	6%	N=24	45%	N=180	40%	N=161	10%	N=39	100%	N=404
Overall confidence in Nevada County government	4%	N=20	38%	N=180	43%	N=200	15%	N=70	100%	N=470
Generally acting in the best interest of the community	5%	N=24	43%	N=198	37%	N=172	15%	N=71	100%	N=465
Treating all residents fairly	7%	N=29	44%	N=178	32%	N=131	17%	N=67	100%	N=406

The National Citizen Survey™

Please rate the following categories of Nevada County government performance:	Excellent		Good		Fair		Poor		Total	
	3%	N=13	37%	N=134	40%	N=147	20%	N=74	100%	N=368
Being transparent										

Table 13: Question 13

Please rate how important, if at all, you think it is for the Nevada County community to focus on each of the following in the coming two years:	Essential		Very important		Somewhat important		Not at all important		Total	
	49%	N=264	36%	N=192	13%	N=69	2%	N=9	100%	N=535
Overall feeling of safety in Nevada County	49%	N=264	36%	N=192	13%	N=69	2%	N=9	100%	N=535
Overall ease of getting to the places you usually have to visit	23%	N=118	48%	N=253	25%	N=132	4%	N=21	100%	N=525
Quality of overall natural environment in Nevada County	49%	N=263	40%	N=212	11%	N=58	0%	N=2	100%	N=535
Overall "built environment" of Nevada County (including overall design, buildings, parks and transportation systems)	27%	N=143	50%	N=265	22%	N=116	2%	N=8	100%	N=533
Health and wellness opportunities in Nevada County	38%	N=202	44%	N=237	17%	N=94	1%	N=3	100%	N=536
Overall opportunities for education and enrichment	32%	N=174	45%	N=239	22%	N=115	1%	N=8	100%	N=536
Overall economic health of Nevada County	47%	N=252	44%	N=234	9%	N=45	0%	N=2	100%	N=534
Sense of community	32%	N=170	47%	N=254	20%	N=104	1%	N=7	100%	N=536

Table 14: Question 14

To what extent do you support or oppose each of the following types of retail sales of cannabis in Nevada County?	Strongly support		Somewhat support		Somewhat oppose		Strongly oppose		Total	
	29%	N=152	25%	N=129	8%	N=43	38%	N=196	100%	N=520
Recreational cannabis	29%	N=152	25%	N=129	8%	N=43	38%	N=196	100%	N=520
Medical cannabis	54%	N=281	20%	N=104	9%	N=48	17%	N=89	100%	N=522

Table 15: Question 15

To what extent would you support or oppose each of the following in the future in Nevada County?	Strongly support		Somewhat support		Somewhat oppose		Strongly oppose		Total	
	29%	N=151	25%	N=130	9%	N=49	37%	N=192	100%	N=522
Retail cannabis stores	29%	N=151	25%	N=130	9%	N=49	37%	N=192	100%	N=522
Indoor cannabis cultivation facilities	25%	N=123	29%	N=145	14%	N=69	33%	N=165	100%	N=502
Outdoor cannabis cultivation	27%	N=136	22%	N=110	12%	N=59	40%	N=205	100%	N=510
Commercial and product manufacturing facilities for cannabis	26%	N=126	22%	N=107	12%	N=57	41%	N=199	100%	N=488
Regulation of cannabis advertising	49%	N=246	25%	N=124	7%	N=34	20%	N=99	100%	N=503
Cannabis being an economic driver of Nevada County	30%	N=153	18%	N=89	13%	N=66	39%	N=198	100%	N=505

Table 16: Question 16

To what extent do you support or oppose the following locations for retail cannabis facilities within Nevada County?	Strongly support		Somewhat support		Somewhat oppose		Strongly oppose		Total	
	18%	N=93	22%	N=114	13%	N=68	47%	N=243	100%	N=518
In the downtown areas	18%	N=93	22%	N=114	13%	N=68	47%	N=243	100%	N=518
In any retail or business center	19%	N=98	22%	N=116	17%	N=88	41%	N=214	100%	N=516
In any agricultural area	21%	N=102	30%	N=149	16%	N=77	34%	N=168	100%	N=496
In any residential neighborhood	8%	N=43	9%	N=44	13%	N=65	70%	N=363	100%	N=516
Within 1,000 ft. distance from other cannabis facilities and/or stores	15%	N=71	19%	N=89	19%	N=91	47%	N=218	100%	N=470
Within 1,000 ft. distance from any community gathering areas (e.g., churches, schools, parks, daycares, etc.)	9%	N=45	8%	N=42	21%	N=104	62%	N=313	100%	N=504

The National Citizen Survey™

Table 17: Question 17

To what extent, if at all, are you concerned about each of the following aspects of cannabis in Nevada County?	Very concerned		Somewhat concerned		Not concerned		Total	
Increase of crime due to cannabis cultivation	43%	N=224	24%	N=127	32%	N=169	100%	N=520
Decreased access to medical cannabis due to local regulations	25%	N=113	29%	N=132	47%	N=216	100%	N=461
Cannabis odor	36%	N=183	28%	N=145	36%	N=185	100%	N=513
Cannabis-related traffic in neighborhoods	45%	N=231	31%	N=160	24%	N=124	100%	N=515
Cannabis-related garbage accumulation in neighborhoods	48%	N=245	30%	N=152	22%	N=112	100%	N=510
Unpermitted improvements (structures, septic, wells, etc.)	49%	N=253	33%	N=166	18%	N=92	100%	N=511
Increased camping and recreational vehicles related to cannabis cultivation	52%	N=265	29%	N=148	20%	N=101	100%	N=514
Decreased access to recreational cannabis due to local regulations	28%	N=134	19%	N=92	53%	N=257	100%	N=483
Environmental impacts due to cannabis cultivation	54%	N=276	31%	N=158	15%	N=76	100%	N=509
Children's increased exposure to and the normalization of cannabis	53%	N=271	22%	N=112	25%	N=128	100%	N=511
Transient workforce related to cannabis cultivation	55%	N=284	23%	N=120	21%	N=110	100%	N=514
Fire risk from in-home cannabis cultivation or distillation	57%	N=296	28%	N=143	15%	N=79	100%	N=518

Table 18: Question 18

Regarding issues related to fire danger in your neighborhood, please rate how concerned, if at all, you are with each of the following:	Very concerned		Somewhat concerned		Not concerned		Total	
Neighbors maintaining the 100 foot clearance around homes and roads for Defensible Space	39%	N=201	40%	N=210	21%	N=112	100%	N=523
Forest health (bark beetles, forest management, etc.)	64%	N=335	31%	N=163	5%	N=26	100%	N=524
Ease of yard waste removal	33%	N=172	35%	N=181	32%	N=167	100%	N=520
Large tree removal	34%	N=176	42%	N=215	24%	N=124	100%	N=515
Suppression response (location/number of Fire Stations, emergency response time)	40%	N=202	32%	N=162	27%	N=135	100%	N=500
Illegal encampments	65%	N=336	24%	N=124	10%	N=54	100%	N=513
Illegal campfires	75%	N=392	17%	N=88	8%	N=40	100%	N=520
Obtaining or renewing homeowner insurance with wildfire protection	53%	N=266	33%	N=164	14%	N=72	100%	N=502

Table 19: Question 19

To what degree, if at all, do the following barriers exist for wildfire safety on your property?	Definitely a barrier		Sort of a barrier		Not at all a barrier		Total	
Fiscal barriers to making your property wildfire safe (cost of vegetation management, etc.)	25%	N=112	38%	N=175	37%	N=171	100%	N=458
Physical barriers to making your property wildfire safe (physical ability, health reasons, etc.)	18%	N=84	34%	N=160	49%	N=232	100%	N=475
Regulations with local and state agencies (homeowners association, city, etc.)	17%	N=71	26%	N=108	58%	N=243	100%	N=421

Table 20: Question 20

How much of a source, if any, do you consider each of the following for obtaining information during an emergency?	Major source		Minor source		Not a source		Total	
Nevada County CodeRED Emergency Mass Notification System	46%	N=239	26%	N=138	28%	N=146	100%	N=522
Nevada County Office of Emergency Services website (www.MyNevadaCounty.com)	27%	N=142	44%	N=231	29%	N=150	100%	N=522
County communications via social media (i.e. Facebook or Twitter)	34%	N=177	30%	N=157	36%	N=188	100%	N=523

Table 21: Question 21

To what extent, if at all, are you concerned about each of the following aspects of homelessness in Nevada County?	Very concerned		Somewhat concerned		Not concerned		Total	
Availability of community and government support services	35%	N=171	46%	N=225	19%	N=91	100%	N=486
Accessibility of community and government support services	35%	N=169	47%	N=225	18%	N=85	100%	N=480



The National Citizen Survey™

To what extent, if at all, are you concerned about each of the following aspects of homelessness in Nevada County?	Very concerned		Somewhat concerned		Not concerned		Total	
Public safety	60%	N=310	28%	N=143	12%	N=62	100%	N=515
Impact on economic development	43%	N=217	39%	N=197	18%	N=93	100%	N=506
Illegal camping	66%	N=346	24%	N=127	9%	N=49	100%	N=522
Loitering/nuisance in business areas	60%	N=314	30%	N=156	10%	N=52	100%	N=523

Table 22: Question 22

How do you connect to the Internet at home? (Mark all that apply.)	Percent	Number
No internet access at home	6%	N=33
Cable (Comcast, Suddenlink)	49%	N=260
Satellite (DirectTV, Dish, other)	12%	N=65
DSL provider	19%	N=103
Cellular (Verizon, AT&T, other)	33%	N=177
Dial-up	1%	N=3
Fixed wireless (Colfax Net, Smarter Broadband)	7%	N=36
Other	1%	N=4

Total may exceed 100% as respondents could select more than one option.

Table 23: Question 23

[IF YOU HAVE DIAL-UP INTERNET] What is preventing you from getting high-speed service (e.g., broadband, DSL)? (Mark all that apply.)	Percent	Number
Too expensive	21%	N=1
Don't know enough about it	0%	N=0
Can get access somewhere else (e.g., work, school)	0%	N=0
Don't need it	20%	N=1
Not available in my area	100%	N=3
Other	0%	N=0

This question was only asked of residents who answered "dial-up" to the previous question. Total may exceed 100% as respondents could select more than one option.

Table 24: Question 24

Please rate the quality of your current broadband availability:	Percent	Number
Excellent	15%	N=73
Good	38%	N=184
Fair	28%	N=132
Poor	19%	N=91
Total	100%	N=480

The National Citizen Survey™

Table 25: Question 25

Have you visited the Nevada County Airport for any reason in the last 12 months?	Percent	Number
Yes	21%	N=111
No	79%	N=423
Total	100%	N=534

Table 26: Question 26

How likely or unlikely would you be to visit the Nevada County Airport if:	Very likely		Somewhat likely		Somewhat unlikely		Very unlikely		Total	
There was a restaurant onsite	19%	N=88	35%	N=161	15%	N=71	30%	N=140	100%	N=460
It had a gathering location (multi-use purpose facility, etc.)	16%	N=71	35%	N=160	21%	N=98	28%	N=130	100%	N=460
There were other business spaces available (office space for lease, etc.)	12%	N=51	29%	N=124	24%	N=102	34%	N=143	100%	N=420

Table 27: Question 27

What is your impression of the noise generated by the aircraft at the Nevada County Airport?	Percent	Number
Unnoticeable	45%	N=222
Minor	40%	N=197
Moderate	10%	N=48
Significant	5%	N=27
Unbearable	0%	N=1
Total	100%	N=494

Table 28: Question 28a

From each set of statements below, please select the one you lean toward more:	Percent	Number
My total household income comfortably supports my household	63%	N=332
My household struggles to get by on my/our total income	37%	N=198
Total	100%	N=530

Table 29: Question 28b

From each set of statements below, please select the one you lean toward more:	Percent	Number
I am employed, and I am satisfied with the number of hours I work	54%	N=291
I am employed, and I would work more hours if they were available	10%	N=53
I am unemployed and looking for work	3%	N=18
Retired, not looking for paid work	32%	N=174
Total	100%	N=536

"Retired, not looking for paid work" was not included on the survey as a response option for this question. It was created using question D4 to help identify respondents who were actually unemployed versus those who were retired or not looking for paid work. Additionally, respondents who skipped the question entirely but indicated that that were "unemployed, not looking for work" or "retired" in question D4 were added to this new response category.

Table 30: Question 29

Please choose the statement that best describes you:	Percent	Number
I work one job only	45%	N=237
I work more than one job	20%	N=105
I don't work	34%	N=179
Total	100%	N=521

The National Citizen Survey™

Table 31: Question D1

How often, if at all, do you do each of the following, considering all of the times you could?	Never		Rarely		Sometimes		Usually		Always		Total	
	0%	N=2	1%	N=7	2%	N=12	18%	N=95	78%	N=420	100%	N=536
Recycle at home	0%	N=2	1%	N=7	2%	N=12	18%	N=95	78%	N=420	100%	N=536
Purchase goods or services from a business located in Nevada County	0%	N=0	1%	N=7	17%	N=91	61%	N=326	21%	N=113	100%	N=536
Eat at least 5 portions of fruits and vegetables a day	2%	N=11	11%	N=61	29%	N=156	38%	N=202	20%	N=107	100%	N=536
Participate in moderate or vigorous physical activity	1%	N=7	9%	N=46	25%	N=132	42%	N=223	24%	N=129	100%	N=536
Read or watch local news (via television, paper, computer, etc.)	3%	N=15	8%	N=45	22%	N=120	28%	N=149	38%	N=206	100%	N=536
Vote in local elections	3%	N=19	3%	N=18	4%	N=19	16%	N=88	73%	N=393	100%	N=537

Table 32: Question D2

Would you say that in general your health is:	Percent	Number
Excellent	22%	N=121
Very good	45%	N=240
Good	27%	N=144
Fair	6%	N=32
Poor	0%	N=2
Total	100%	N=538

Table 33: Question D3

What impact, if any, do you think the economy will have on your family income in the next 6 months? Do you think the impact will be:	Percent	Number
Very positive	4%	N=21
Somewhat positive	22%	N=117
Neutral	57%	N=306
Somewhat negative	15%	N=77
Very negative	2%	N=11
Total	100%	N=532

Table 34: Question D4

What is your employment status?	Percent	Number
Working full time for pay	50%	N=265
Working part time for pay	13%	N=72
Unemployed, looking for paid work	3%	N=17
Unemployed, not looking for paid work	2%	N=11
Fully retired	32%	N=171
Total	100%	N=536

Table 35: Question D5

Do you work inside the boundaries of Nevada County?	Percent	Number
Yes, outside the home	41%	N=206
Yes, from home	14%	N=69
No	45%	N=223
Total	100%	N=497

The National Citizen Survey™

Table 36: Question D6

How many years have you lived in Nevada County?	Percent	Number
Less than 2 years	8%	N=42
2 to 5 years	11%	N=61
6 to 10 years	13%	N=70
11 to 20 years	24%	N=126
More than 20 years	44%	N=236
Total	100%	N=536

Table 37: Question D7

Which best describes the building you live in?	Percent	Number
One family house detached from any other houses	86%	N=459
Building with two or more homes (duplex, townhome, apartment or condominium)	10%	N=54
Mobile home	3%	N=17
Other	1%	N=6
Total	100%	N=537

Table 38: Question D8

Is this house, apartment or mobile home...	Percent	Number
Rented	25%	N=136
Owned	75%	N=401
Total	100%	N=537

Table 39: Question D9

About how much is your monthly housing cost for the place you live (including rent, mortgage payment, property tax, property insurance and homeowners' association (HOA) fees)?	Percent	Number
Less than \$300 per month	6%	N=32
\$300 to \$599 per month	8%	N=44
\$600 to \$999 per month	15%	N=79
\$1,000 to \$1,499 per month	24%	N=124
\$1,500 to \$2,499 per month	31%	N=164
\$2,500 or more per month	16%	N=82
Total	100%	N=525

Table 40: Question D10

Do any children 17 or under live in your household?	Percent	Number
No	73%	N=393
Yes	27%	N=144
Total	100%	N=536

The National Citizen Survey™

Table 41: Question D11

Are you or any other members of your household aged 65 or older?	Percent	Number
No	59%	N=315
Yes	41%	N=220
Total	100%	N=535

Table 42: Question D12

How much do you anticipate your household's total income before taxes will be for the current year? (Please include in your total income money from all sources for all persons living in your household.)	Percent	Number
Less than \$25,000	15%	N=75
\$25,000 to \$49,999	20%	N=102
\$50,000 to \$99,999	34%	N=175
\$100,000 to \$149,999	18%	N=92
\$150,000 or more	13%	N=65
Total	100%	N=509

Table 43: Question D13

Are you Spanish, Hispanic or Latino?	Percent	Number
No, not Spanish, Hispanic or Latino	97%	N=511
Yes, I consider myself to be Spanish, Hispanic or Latino	3%	N=18
Total	100%	N=529

Table 44: Question D14

What is your race? (Mark one or more races to indicate what race(s) you consider yourself to be.)	Percent	Number
American Indian or Alaskan Native	5%	N=27
Asian, Asian Indian or Pacific Islander	1%	N=7
Black or African American	1%	N=4
White	95%	N=503
Other	5%	N=28

Total may exceed 100% as respondents could select more than one option.

Table 45: Question D15

In which category is your age?	Percent	Number
18 to 24 years	1%	N=5
25 to 34 years	17%	N=90
35 to 44 years	14%	N=74
45 to 54 years	20%	N=107
55 to 64 years	16%	N=84
65 to 74 years	19%	N=103
75 years or older	13%	N=72
Total	100%	N=535

The National Citizen Survey™

Table 46: Question D16

What is your sex?	Percent	Number
Female	52%	N=278
Male	48%	N=255
Total	100%	N=532

Table 47: Question D17

Do you consider a cell phone or landline your primary telephone number?	Percent	Number
Cell	52%	N=281
Land line	27%	N=145
Both	21%	N=111
Total	100%	N=537

**Responses including “don’t know”**

The following pages contain a complete set of responses to each question on the survey, including the “don’t know” responses. The percent of respondents giving a particular response is shown followed by the number of respondents (denoted with “N=”).

Table 48: Question 1

Please rate each of the following aspects of quality of life in Nevada County:	Excellent		Good		Fair		Poor		Don't know		Total	
Nevada County as a place to live	41%	N=217	53%	N=286	6%	N=30	0%	N=1	0%	N=0	100%	N=535
Your neighborhood as a place to live	47%	N=252	43%	N=233	9%	N=46	1%	N=4	0%	N=0	100%	N=536
Nevada County as a place to raise children	30%	N=162	41%	N=218	13%	N=71	1%	N=6	14%	N=75	100%	N=532
Nevada County as a place to work	11%	N=58	22%	N=119	35%	N=186	20%	N=105	12%	N=65	100%	N=532
Nevada County as a place to visit	60%	N=319	33%	N=178	6%	N=30	0%	N=2	1%	N=4	100%	N=533
Nevada County as a place to retire	41%	N=218	36%	N=189	14%	N=76	3%	N=18	5%	N=29	100%	N=530
The overall quality of life in Nevada County	36%	N=190	53%	N=282	11%	N=57	0%	N=1	0%	N=1	100%	N=531

Table 49: Question 2

Please rate each of the following characteristics as they relate to Nevada County as a whole:	Excellent		Good		Fair		Poor		Don't know		Total	
Overall feeling of safety in Nevada County	25%	N=136	56%	N=300	16%	N=86	2%	N=11	0%	N=1	100%	N=535
Overall ease of getting to the places you usually have to visit	26%	N=137	52%	N=277	16%	N=84	7%	N=36	0%	N=0	100%	N=534
Quality of overall natural environment in Nevada County	55%	N=289	39%	N=208	5%	N=25	1%	N=6	0%	N=1	100%	N=528
Overall "built environment" of Nevada County (including overall design, buildings, parks and transportation systems)	10%	N=53	48%	N=256	37%	N=196	4%	N=23	1%	N=5	100%	N=533
Health and wellness opportunities in Nevada County	20%	N=106	40%	N=214	28%	N=150	6%	N=34	5%	N=29	100%	N=535
Overall opportunities for education and enrichment	14%	N=74	48%	N=255	28%	N=147	6%	N=30	5%	N=25	100%	N=532
Overall economic health of Nevada County	7%	N=38	34%	N=183	41%	N=221	8%	N=43	9%	N=49	100%	N=534
Sense of community	27%	N=143	49%	N=259	21%	N=111	3%	N=14	1%	N=5	100%	N=532
Overall image or reputation of Nevada County	26%	N=137	51%	N=272	17%	N=92	3%	N=14	4%	N=21	100%	N=535

Table 50: Question 3

Please indicate how likely or unlikely you are to do each of the following:	Very likely		Somewhat likely		Somewhat unlikely		Very unlikely		Don't know		Total	
Recommend living in Nevada County to someone who asks	47%	N=252	46%	N=245	4%	N=24	3%	N=14	0%	N=2	100%	N=537
Remain in Nevada County for the next five years	68%	N=363	22%	N=117	4%	N=23	2%	N=11	4%	N=21	100%	N=535
Remain in Nevada County for the next 12 months	88%	N=468	10%	N=51	2%	N=8	0%	N=2	1%	N=3	100%	N=531

The National Citizen Survey™

Table 51: Question 4

Please rate how safe or unsafe you feel:	Very safe		Somewhat safe		Neither safe nor unsafe		Somewhat unsafe		Very unsafe		Don't know		Total	
	%	N	%	N	%	N	%	N	%	N	%	N	%	N
In your neighborhood during the day	79%	N=420	18%	N=97	2%	N=11	1%	N=6	0%	N=1	0%	N=0	100%	N=535
In Nevada County's downtown/commercial areas during the day	58%	N=313	33%	N=174	5%	N=27	3%	N=13	0%	N=1	1%	N=7	100%	N=535
In Nevada County's downtown/commercial areas at night	29%	N=152	40%	N=215	12%	N=65	12%	N=62	3%	N=14	5%	N=25	100%	N=533

Table 52: Question 5

Please rate each of the following characteristics as they relate to Nevada County as a whole:	Excellent		Good		Fair		Poor		Don't know		Total	
	%	N	%	N	%	N	%	N	%	N	%	N
Traffic flow on major streets	10%	N=54	48%	N=254	32%	N=168	10%	N=55	0%	N=2	100%	N=533
Ease of travel by car in Nevada County	20%	N=105	54%	N=288	21%	N=114	5%	N=28	0%	N=1	100%	N=536
Ease of travel by public transportation in Nevada County	3%	N=18	9%	N=49	19%	N=102	22%	N=114	46%	N=242	100%	N=525
Ease of travel by bicycle in Nevada County	4%	N=22	19%	N=98	24%	N=127	20%	N=105	33%	N=172	100%	N=524
Ease of walking in Nevada County	15%	N=81	37%	N=194	31%	N=167	11%	N=60	6%	N=29	100%	N=529
Availability of paths and walking trails	27%	N=142	41%	N=219	22%	N=116	5%	N=28	5%	N=29	100%	N=535
Air quality	24%	N=126	51%	N=270	18%	N=96	6%	N=32	2%	N=9	100%	N=533
Public places where people want to spend time	23%	N=121	42%	N=225	27%	N=144	5%	N=26	3%	N=17	100%	N=532
Variety of housing options	7%	N=39	19%	N=100	32%	N=171	33%	N=178	9%	N=46	100%	N=534
Availability of affordable quality housing	4%	N=21	13%	N=70	24%	N=124	47%	N=251	12%	N=62	100%	N=529
Fitness opportunities (including exercise classes and paths or trails, etc.)	38%	N=202	41%	N=221	14%	N=75	2%	N=13	4%	N=23	100%	N=534
Recreational opportunities	44%	N=235	40%	N=213	11%	N=59	2%	N=9	3%	N=15	100%	N=532
Availability of affordable quality food	26%	N=138	46%	N=243	20%	N=110	8%	N=43	0%	N=1	100%	N=535
Availability of affordable quality health care	12%	N=63	31%	N=164	35%	N=187	14%	N=74	9%	N=46	100%	N=535
Availability of preventive health services	14%	N=77	33%	N=174	29%	N=156	9%	N=50	14%	N=74	100%	N=531
Availability of affordable quality mental health care	8%	N=42	15%	N=79	16%	N=86	13%	N=66	49%	N=257	100%	N=530
Access to specialty health care (primary doctor, healthcare specialist, dentist, etc.)	11%	N=61	29%	N=155	29%	N=157	22%	N=120	8%	N=44	100%	N=536

Table 53: Question 6

Please rate each of the following characteristics as they relate to Nevada County as a whole:	Excellent		Good		Fair		Poor		Don't know		Total	
	%	N	%	N	%	N	%	N	%	N	%	N
Availability of affordable quality child care/preschool	4%	N=20	20%	N=103	12%	N=63	5%	N=26	60%	N=314	100%	N=526
K-12 education	14%	N=75	35%	N=184	15%	N=79	2%	N=10	34%	N=182	100%	N=530
Adult educational opportunities	10%	N=55	34%	N=178	24%	N=128	5%	N=26	27%	N=142	100%	N=529
Opportunities to attend cultural/arts/music activities	38%	N=202	41%	N=216	12%	N=65	2%	N=10	6%	N=34	100%	N=526
Opportunities to participate in religious or spiritual events and activities	27%	N=146	38%	N=204	8%	N=44	1%	N=4	26%	N=136	100%	N=534
Employment opportunities	2%	N=13	13%	N=70	35%	N=183	33%	N=174	17%	N=89	100%	N=529
Shopping opportunities	9%	N=46	34%	N=181	42%	N=222	15%	N=79	0%	N=2	100%	N=530
Cost of living in Nevada County	4%	N=23	23%	N=121	46%	N=243	25%	N=134	2%	N=8	100%	N=530
Overall quality of business and service establishments in Nevada County	10%	N=52	51%	N=270	34%	N=182	3%	N=16	2%	N=12	100%	N=531
Opportunities to participate in social events and activities	30%	N=160	46%	N=242	17%	N=92	1%	N=5	6%	N=33	100%	N=531



The National Citizen Survey™

Please rate each of the following characteristics as they relate to Nevada County as a whole:	Excellent		Good		Fair		Poor		Don't know		Total	
	%	N	%	N	%	N	%	N	%	N	%	N
Opportunities to volunteer	41%	N=218	43%	N=228	5%	N=28	1%	N=7	10%	N=52	100%	N=533
Opportunities to participate in community matters	27%	N=146	45%	N=240	12%	N=66	2%	N=9	13%	N=71	100%	N=531
Openness and acceptance of the community toward people of diverse backgrounds	14%	N=74	38%	N=199	28%	N=150	10%	N=52	10%	N=54	100%	N=529
Neighborliness of residents in Nevada County	20%	N=103	55%	N=291	20%	N=103	3%	N=14	3%	N=16	100%	N=527
Access to food and beverage establishments (wineries, breweries, and restaurants)	32%	N=171	49%	N=264	15%	N=81	2%	N=13	1%	N=6	100%	N=535
Access to organic food	38%	N=202	39%	N=210	10%	N=51	1%	N=8	12%	N=62	100%	N=532

Table 54: Question 7

Please indicate whether or not you have done each of the following in the last 12 months.	No		Yes		Total	
	%	N	%	N	%	N
Made efforts to conserve water	6%	N=32	94%	N=503	100%	N=535
Made efforts to make your home more energy efficient	20%	N=104	80%	N=429	100%	N=533
Observed a code violation or other hazard in Nevada County (weeds, abandoned buildings or cars, etc.)	39%	N=208	61%	N=322	100%	N=530
Household member was a victim of a crime in Nevada County	90%	N=479	10%	N=54	100%	N=532
Reported a crime to the Sheriff in Nevada County	82%	N=434	18%	N=97	100%	N=532
Stocked supplies in preparation for an emergency	53%	N=282	47%	N=250	100%	N=533
Campaigned or advocated for an issue, cause or candidate	62%	N=333	38%	N=202	100%	N=535
Contacted Nevada County (in-person, phone, email or web) for help or information	59%	N=312	41%	N=221	100%	N=533
Contacted Nevada County elected officials (in-person, phone, email or web) to express your opinion	75%	N=402	25%	N=131	100%	N=533
Utilized the recycling facility at the McCourtney Road Transfer Station	37%	N=195	63%	N=338	100%	N=533
Visited the County website MyNevadaCounty.com	45%	N=242	55%	N=292	100%	N=535
Visited the County tourism website GoNevadaCounty.com	80%	N=425	20%	N=107	100%	N=532
Visited County social media sites (Facebook, Twitter, etc.) for information on services	65%	N=347	35%	N=187	100%	N=533
Accessed County services online (pay taxes, book community rooms, building permits, etc.)	66%	N=352	34%	N=181	100%	N=533

Table 55: Question 8

In the last 12 months, about how many times, if at all, have you or other household members done each of the following in Nevada County?	2 times a week or more		2-4 times a month		Once a month or less		Not at all		Total	
	%	N	%	N	%	N	%	N	%	N
Visited a community park	16%	N=87	28%	N=152	43%	N=227	13%	N=67	100%	N=533
Used Nevada County public libraries or their services	4%	N=22	18%	N=97	34%	N=181	44%	N=233	100%	N=533
Participated in religious or spiritual activities in Nevada County	12%	N=65	17%	N=88	16%	N=85	55%	N=291	100%	N=529
Attended a County-sponsored event	1%	N=5	6%	N=33	46%	N=242	47%	N=251	100%	N=531
Used bus transportation instead of driving	2%	N=11	1%	N=7	5%	N=27	92%	N=486	100%	N=531
Carpooled with other adults or children instead of driving alone	14%	N=73	18%	N=98	24%	N=126	44%	N=233	100%	N=530
Walked or biked instead of driving	14%	N=76	17%	N=89	26%	N=138	43%	N=232	100%	N=535
Volunteered your time to some group/activity in Nevada County	10%	N=53	22%	N=115	31%	N=165	37%	N=199	100%	N=532
Participated in a club	8%	N=44	19%	N=99	22%	N=117	51%	N=269	100%	N=529
Talked to or visited with your immediate neighbors	46%	N=242	30%	N=159	20%	N=109	4%	N=21	100%	N=531
Done a favor for a neighbor	23%	N=121	33%	N=171	36%	N=187	9%	N=46	100%	N=526
Utilized a recycling facility other than the transfer station to recycle: batteries, light bulbs, commingle [paper/plastic], mattresses, beverage containers, etc.	7%	N=36	17%	N=89	42%	N=221	34%	N=181	100%	N=527

The National Citizen Survey™

Table 56: Question 9

Thinking about local public meetings (of local elected officials like County Council or County Commissioners, advisory boards, town halls, HOA, neighborhood watch, etc.), in the last 12 months, about how many times, if at all, have you or other household members attended or watched a local public meeting?	2 times a week or more		2-4 times a month		Once a month or less		Not at all		Total	
	0%	N=1	4%	N=19	26%	N=140	70%	N=369	100%	N=529
Attended a local public meeting	0%	N=1	4%	N=19	26%	N=140	70%	N=369	100%	N=529
Watched (online or on television) a local public meeting	0%	N=3	3%	N=15	17%	N=89	80%	N=425	100%	N=532

Table 57: Question 10

Please rate the quality of each of the following services in Nevada County:	Excellent		Good		Fair		Poor		Don't know		Total	
Sheriff services	19%	N=104	43%	N=229	14%	N=75	2%	N=9	22%	N=117	100%	N=534
Crime prevention	9%	N=49	37%	N=199	21%	N=114	6%	N=32	26%	N=138	100%	N=531
Fire prevention and education	23%	N=124	48%	N=254	14%	N=74	2%	N=11	13%	N=69	100%	N=533
Traffic enforcement	10%	N=52	43%	N=227	27%	N=146	7%	N=36	13%	N=71	100%	N=532
Street repair	4%	N=22	20%	N=109	34%	N=183	38%	N=204	3%	N=17	100%	N=536
Street cleaning	7%	N=38	35%	N=187	33%	N=178	10%	N=51	15%	N=79	100%	N=533
Snow removal	13%	N=69	42%	N=221	19%	N=100	4%	N=19	23%	N=123	100%	N=533
Bus or transit services	3%	N=17	14%	N=73	17%	N=91	12%	N=65	54%	N=286	100%	N=531
Garbage collection	28%	N=151	46%	N=248	14%	N=74	4%	N=21	7%	N=39	100%	N=534
Recycling	25%	N=132	46%	N=245	16%	N=84	10%	N=55	4%	N=20	100%	N=536
Yard waste pick-up	19%	N=101	32%	N=171	13%	N=71	5%	N=29	30%	N=163	100%	N=534
Storm drainage	10%	N=53	33%	N=177	26%	N=137	6%	N=33	25%	N=132	100%	N=532
Sewer services	10%	N=54	28%	N=147	11%	N=57	1%	N=6	50%	N=268	100%	N=532
Recreation programs or classes	12%	N=66	33%	N=173	17%	N=88	2%	N=12	36%	N=190	100%	N=529
Recreation centers or facilities	12%	N=62	32%	N=167	21%	N=113	6%	N=30	30%	N=158	100%	N=530
Land use, planning and zoning	3%	N=16	22%	N=115	24%	N=128	11%	N=59	40%	N=211	100%	N=529
Code enforcement (weeds, abandoned buildings or cars, etc.)	6%	N=30	19%	N=101	28%	N=149	14%	N=72	34%	N=178	100%	N=530
Animal control	8%	N=41	34%	N=182	17%	N=89	6%	N=31	36%	N=188	100%	N=531
Economic development	5%	N=27	16%	N=87	29%	N=153	14%	N=74	36%	N=191	100%	N=531
Health services	9%	N=49	32%	N=172	30%	N=162	8%	N=45	20%	N=104	100%	N=532
Public library services	19%	N=103	41%	N=217	9%	N=50	2%	N=10	28%	N=150	100%	N=529
Public information services	7%	N=35	35%	N=187	19%	N=101	2%	N=9	37%	N=196	100%	N=528
Emergency preparedness (services that prepare the community for natural disasters or other emergency situations)	8%	N=40	24%	N=127	16%	N=86	4%	N=21	48%	N=251	100%	N=525
Preservation of natural areas such as open space, farmlands and greenbelts	15%	N=76	41%	N=210	20%	N=103	7%	N=34	17%	N=88	100%	N=511
Overall customer service by Nevada County employees (receptionists, planners, Sheriff, etc.)	16%	N=86	42%	N=221	18%	N=92	2%	N=13	22%	N=113	100%	N=525

The National Citizen Survey™

Table 58: Question 11

Overall, how would you rate the quality of the services provided by each of the following?	Excellent		Good		Fair		Poor		Don't know		Total	
Nevada County	13%	N=68	56%	N=300	21%	N=112	1%	N=7	9%	N=46	100%	N=533
The Federal Government	3%	N=16	20%	N=107	32%	N=169	26%	N=136	19%	N=102	100%	N=529
The State Government	4%	N=22	28%	N=150	30%	N=159	20%	N=107	17%	N=91	100%	N=529

Table 59: Question 12

Please rate the following categories of Nevada County government performance:	Excellent		Good		Fair		Poor		Don't know		Total	
The value of services for the taxes paid to Nevada County	4%	N=19	35%	N=184	34%	N=180	11%	N=59	16%	N=86	100%	N=528
The overall direction that Nevada County is taking	3%	N=14	32%	N=170	34%	N=180	13%	N=69	18%	N=95	100%	N=529
The job Nevada County government does at welcoming citizen involvement	4%	N=24	34%	N=180	30%	N=161	7%	N=39	24%	N=125	100%	N=529
Overall confidence in Nevada County government	4%	N=20	34%	N=180	38%	N=200	13%	N=70	11%	N=60	100%	N=530
Generally acting in the best interest of the community	5%	N=24	38%	N=198	33%	N=172	13%	N=71	12%	N=61	100%	N=526
Treating all residents fairly	6%	N=29	34%	N=178	25%	N=131	13%	N=67	23%	N=122	100%	N=528
Being transparent	2%	N=13	26%	N=134	28%	N=147	14%	N=74	30%	N=158	100%	N=526

Table 60: Question 13

Please rate how important, if at all, you think it is for the Nevada County community to focus on each of the following in the coming two years:	Essential		Very important		Somewhat important		Not at all important		Total	
Overall feeling of safety in Nevada County	49%	N=264	36%	N=192	13%	N=69	2%	N=9	100%	N=535
Overall ease of getting to the places you usually have to visit	23%	N=118	48%	N=253	25%	N=132	4%	N=21	100%	N=525
Quality of overall natural environment in Nevada County	49%	N=263	40%	N=212	11%	N=58	0%	N=2	100%	N=535
Overall "built environment" of Nevada County (including overall design, buildings, parks and transportation systems)	27%	N=143	50%	N=265	22%	N=116	2%	N=8	100%	N=533
Health and wellness opportunities in Nevada County	38%	N=202	44%	N=237	17%	N=94	1%	N=3	100%	N=536
Overall opportunities for education and enrichment	32%	N=174	45%	N=239	22%	N=115	1%	N=8	100%	N=536
Overall economic health of Nevada County	47%	N=252	44%	N=234	9%	N=45	0%	N=2	100%	N=534
Sense of community	32%	N=170	47%	N=254	20%	N=104	1%	N=7	100%	N=536

Table 61: Question 14

To what extent do you support or oppose each of the following types of retail sales of cannabis in Nevada County?	Strongly support		Somewhat support		Somewhat oppose		Strongly oppose		Don't know		Total	
Recreational cannabis	28%	N=152	24%	N=129	8%	N=43	37%	N=196	3%	N=15	100%	N=535
Medical cannabis	52%	N=281	19%	N=104	9%	N=48	17%	N=89	3%	N=15	100%	N=537

Table 62: Question 15

To what extent would you support or oppose each of the following in the future in Nevada County?	Strongly support		Somewhat support		Somewhat oppose		Strongly oppose		Don't know		Total	
Retail cannabis stores	28%	N=151	24%	N=130	9%	N=49	36%	N=192	2%	N=11	100%	N=533
Indoor cannabis cultivation facilities	23%	N=123	27%	N=145	13%	N=69	31%	N=165	5%	N=29	100%	N=531

The National Citizen Survey™

To what extent would you support or oppose each of the following in the future in Nevada County?	Strongly support		Somewhat support		Somewhat oppose		Strongly oppose		Don't know		Total	
Outdoor cannabis cultivation	26%	N=136	21%	N=110	11%	N=59	39%	N=205	4%	N=21	100%	N=530
Commercial and product manufacturing facilities for cannabis	24%	N=126	20%	N=107	11%	N=57	38%	N=199	7%	N=35	100%	N=524
Regulation of cannabis advertising	46%	N=246	23%	N=124	6%	N=34	19%	N=99	5%	N=26	100%	N=530
Cannabis being an economic driver of Nevada County	29%	N=153	17%	N=89	12%	N=66	37%	N=198	5%	N=28	100%	N=533

Table 63: Question 16

To what extent do you support or oppose the following locations for retail cannabis facilities within Nevada County?	Strongly support		Somewhat support		Somewhat oppose		Strongly oppose		Don't know		Total	
In the downtown areas	17%	N=93	21%	N=114	13%	N=68	46%	N=243	3%	N=15	100%	N=533
In any retail or business center	18%	N=98	22%	N=116	17%	N=88	40%	N=214	3%	N=16	100%	N=532
In any agricultural area	19%	N=102	28%	N=149	15%	N=77	32%	N=168	6%	N=30	100%	N=526
In any residential neighborhood	8%	N=43	8%	N=44	12%	N=65	69%	N=363	3%	N=15	100%	N=531
Within 1,000 ft. distance from other cannabis facilities and/or stores	13%	N=71	17%	N=89	17%	N=91	41%	N=218	12%	N=62	100%	N=532
Within 1,000 ft. distance from any community gathering areas (e.g., churches, schools, parks, daycares, etc.)	8%	N=45	8%	N=42	19%	N=104	59%	N=313	5%	N=29	100%	N=533

Table 64: Question 17

To what extent, if at all, are you concerned about each of the following aspects of cannabis in Nevada County?	Very concerned		Somewhat concerned		Not concerned		Don't know		Total	
Increase of crime due to cannabis cultivation	42%	N=224	24%	N=127	32%	N=169	3%	N=14	100%	N=533
Decreased access to medical cannabis due to local regulations	21%	N=113	25%	N=132	41%	N=216	13%	N=68	100%	N=529
Cannabis odor	34%	N=183	27%	N=145	35%	N=185	4%	N=20	100%	N=533
Cannabis-related traffic in neighborhoods	43%	N=231	30%	N=160	23%	N=124	4%	N=19	100%	N=534
Cannabis-related garbage accumulation in neighborhoods	46%	N=245	28%	N=152	21%	N=112	5%	N=26	100%	N=535
Unpermitted improvements (structures, septic, wells, etc.)	47%	N=253	31%	N=166	17%	N=92	4%	N=23	100%	N=534
Increased camping and recreational vehicles related to cannabis cultivation	50%	N=265	28%	N=148	19%	N=101	4%	N=19	100%	N=533
Decreased access to recreational cannabis due to local regulations	25%	N=134	17%	N=92	48%	N=257	9%	N=48	100%	N=531
Environmental impacts due to cannabis cultivation	52%	N=276	30%	N=158	14%	N=76	5%	N=24	100%	N=534
Children's increased exposure to and the normalization of cannabis	51%	N=271	21%	N=112	24%	N=128	4%	N=22	100%	N=533
Transient workforce related to cannabis cultivation	53%	N=284	22%	N=120	21%	N=110	4%	N=19	100%	N=532
Fire risk from in-home cannabis cultivation or distillation	55%	N=296	27%	N=143	15%	N=79	3%	N=17	100%	N=535

Table 65: Question 18

Regarding issues related to fire danger in your neighborhood, please rate how concerned, if at all, you are with each of the following:	Very concerned		Somewhat concerned		Not concerned		Don't know		Total	
Neighbors maintaining the 100 foot clearance around homes and roads for Defensible Space	38%	N=201	39%	N=210	21%	N=112	2%	N=11	100%	N=534
Forest health (bark beetles, forest management, etc.)	63%	N=335	31%	N=163	5%	N=26	2%	N=8	100%	N=532
Ease of yard waste removal	32%	N=172	34%	N=181	31%	N=167	3%	N=15	100%	N=535
Large tree removal	33%	N=176	40%	N=215	23%	N=124	4%	N=19	100%	N=534
Suppression response (location/number of Fire Stations, emergency response time)	38%	N=202	30%	N=162	25%	N=135	6%	N=33	100%	N=533

The National Citizen Survey™

Regarding issues related to fire danger in your neighborhood, please rate how concerned, if at all, you are with each of the following:	Very concerned		Somewhat concerned		Not concerned		Don't know		Total	
	Percent	N	Percent	N	Percent	N	Percent	N	Percent	N
Illegal encampments	63%	N=336	23%	N=124	10%	N=54	4%	N=22	100%	N=535
Illegal campfires	73%	N=392	16%	N=88	8%	N=40	3%	N=15	100%	N=535
Obtaining or renewing homeowner insurance with wildfire protection	50%	N=266	31%	N=164	13%	N=72	6%	N=33	100%	N=535

Table 66: Question 19

To what degree, if at all, do the following barriers exist for wildfire safety on your property?	Definitely a barrier		Sort of a barrier		Not at all a barrier		Don't know		Total	
	Percent	N	Percent	N	Percent	N	Percent	N	Percent	N
Fiscal barriers to making your property wildfire safe (cost of vegetation management, etc.)	21%	N=112	33%	N=175	32%	N=171	13%	N=69	100%	N=527
Physical barriers to making your property wildfire safe (physical ability, health reasons, etc.)	16%	N=84	30%	N=160	44%	N=232	9%	N=49	100%	N=524
Regulations with local and state agencies (homeowners association, city, etc.)	13%	N=71	20%	N=108	46%	N=243	20%	N=105	100%	N=526

Table 67: Question 20

How much of a source, if any, do you consider each of the following for obtaining information during an emergency?	Major source		Minor source		Not a source		Total	
	Percent	N	Percent	N	Percent	N	Percent	N
Nevada County CodeRED Emergency Mass Notification System	46%	N=239	26%	N=138	28%	N=146	100%	N=522
Nevada County Office of Emergency Services website (www.MyNevadaCounty.com)	27%	N=142	44%	N=231	29%	N=150	100%	N=522
County communications via social media (i.e. Facebook or Twitter)	34%	N=177	30%	N=157	36%	N=188	100%	N=523

Table 68: Question 21

To what extent, if at all, are you concerned about each of the following aspects of homelessness in Nevada County?	Very concerned		Somewhat concerned		Not concerned		Don't know		Total	
	Percent	N	Percent	N	Percent	N	Percent	N	Percent	N
Availability of community and government support services	32%	N=171	42%	N=225	17%	N=91	9%	N=48	100%	N=534
Accessibility of community and government support services	32%	N=169	42%	N=225	16%	N=85	10%	N=54	100%	N=534
Public safety	58%	N=310	27%	N=143	12%	N=62	3%	N=17	100%	N=532
Impact on economic development	40%	N=217	37%	N=197	17%	N=93	5%	N=29	100%	N=535
Illegal camping	64%	N=346	24%	N=127	9%	N=49	3%	N=15	100%	N=536
Loitering/nuisance in business areas	59%	N=314	29%	N=156	10%	N=52	3%	N=14	100%	N=536

Table 69: Question 22

How do you connect to the Internet at home? (Mark all that apply.)	Percent	Number
No internet access at home	6%	N=33
Cable (Comcast, Suddenlink)	49%	N=260
Satellite (DirectTV, Dish, other)	12%	N=65
DSL provider	19%	N=103
Cellular (Verizon, AT&T, other)	33%	N=177
Dial-up	1%	N=3
Fixed wireless (Colfax Net, Smarter Broadband)	7%	N=36
Other	1%	N=4
Don't know	1%	N=5

Total may exceed 100% as respondents could select more than one option.

The National Citizen Survey™

Table 70: Question 23

[IF YOU HAVE DIAL-UP INTERNET] What is preventing you from getting high-speed service (e.g., broadband, DSL)? (Mark all that apply.)	Percent	Number
Too expensive	21%	N=1
Don't know enough about it	0%	N=0
Can get access somewhere else (e.g., work, school)	0%	N=0
Don't need it	20%	N=1
Not available in my area	100%	N=3
Other	0%	N=0

This question was only asked of residents who answered "dial-up" to the previous question. Total may exceed 100% as respondents could select more than one option.

Table 71: Question 24

Please rate the quality of your current broadband availability:	Percent	Number
Excellent	14%	N=73
Good	35%	N=184
Fair	25%	N=132
Poor	17%	N=91
Don't know	8%	N=41
Total	100%	N=521

Table 72: Question 25

Have you visited the Nevada County Airport for any reason in the last 12 months?	Percent	Number
Yes	21%	N=111
No	79%	N=423
Total	100%	N=534

Table 73: Question 26

How likely or unlikely would you be to visit the Nevada County Airport if:	Very likely		Somewhat likely		Somewhat unlikely		Very unlikely		Don't know		Total	
There was a restaurant onsite	16%	N=88	30%	N=161	13%	N=71	26%	N=140	14%	N=74	100%	N=534
It had a gathering location (multi-use purpose facility, etc.)	13%	N=71	30%	N=160	18%	N=98	24%	N=130	13%	N=72	100%	N=532
There were other business spaces available (office space for lease, etc.)	10%	N=51	23%	N=124	19%	N=102	27%	N=143	21%	N=111	100%	N=531

Table 74: Question 27

What is your impression of the noise generated by the aircraft at the Nevada County Airport?	Percent	Number
Unnoticeable	41%	N=222
Minor	36%	N=197
Moderate	9%	N=48
Significant	5%	N=27
Unbearable	0%	N=1
No response	9%	N=51
Total	100%	N=545

The National Citizen Survey™

Table 75: Question 28a

From each set of statements below, please select the one you lean toward more:	Percent	Number
My total household income comfortably supports my household	63%	N=332
My household struggles to get by on my/our total income	37%	N=198
Total	100%	N=530

Table 76: Question 28b

From each set of statements below, please select the one you lean toward more:	Percent	Number
I am employed, and I am satisfied with the number of hours I work	54%	N=291
I am employed, and I would work more hours if they were available	10%	N=53
I am unemployed and looking for work	3%	N=18
Retired, not looking for paid work	32%	N=174
Total	100%	N=536

"Retired, not looking for paid work" was not included on the survey as a response option for this question. It was created using question D4 to help identify respondents who were actually unemployed versus those who were retired or not looking for paid work. Additionally, respondents who skipped the question entirely but indicated that that were "unemployed, not looking for work" or "retired" in question D4 were added to this new response category.

Table 77: Question 29

Please choose the statement that best describes you:	Percent	Number
I work one job only	45%	N=237
I work more than one job	20%	N=105
I don't work	34%	N=179
Total	100%	N=521

Table 78: Question D1

How often, if at all, do you do each of the following, considering all of the times you could?	Never		Rarely		Sometimes		Usually		Always		Total	
	0%	N=2	1%	N=7	2%	N=12	18%	N=95	78%	N=420	100%	N=536
Recycle at home	0%	N=2	1%	N=7	2%	N=12	18%	N=95	78%	N=420	100%	N=536
Purchase goods or services from a business located in Nevada County	0%	N=0	1%	N=7	17%	N=91	61%	N=326	21%	N=113	100%	N=536
Eat at least 5 portions of fruits and vegetables a day	2%	N=11	11%	N=61	29%	N=156	38%	N=202	20%	N=107	100%	N=536
Participate in moderate or vigorous physical activity	1%	N=7	9%	N=46	25%	N=132	42%	N=223	24%	N=129	100%	N=536
Read or watch local news (via television, paper, computer, etc.)	3%	N=15	8%	N=45	22%	N=120	28%	N=149	38%	N=206	100%	N=536
Vote in local elections	3%	N=19	3%	N=18	4%	N=19	16%	N=88	73%	N=393	100%	N=537

Table 79: Question D2

Would you say that in general your health is:	Percent	Number
Excellent	22%	N=121
Very good	45%	N=240
Good	27%	N=144
Fair	6%	N=32
Poor	0%	N=2
Total	100%	N=538

The National Citizen Survey™

Table 80: Question D3

What impact, if any, do you think the economy will have on your family income in the next 6 months? Do you think the impact will be:	Percent	Number
Very positive	4%	N=21
Somewhat positive	22%	N=117
Neutral	57%	N=306
Somewhat negative	15%	N=77
Very negative	2%	N=11
Total	100%	N=532

Table 81: Question D4

What is your employment status?	Percent	Number
Working full time for pay	50%	N=265
Working part time for pay	13%	N=72
Unemployed, looking for paid work	3%	N=17
Unemployed, not looking for paid work	2%	N=11
Fully retired	32%	N=171
Total	100%	N=536

Table 82: Question D5

Do you work inside the boundaries of Nevada County?	Percent	Number
Yes, outside the home	41%	N=206
Yes, from home	14%	N=69
No	45%	N=223
Total	100%	N=497

Table 83: Question D6

How many years have you lived in Nevada County?	Percent	Number
Less than 2 years	8%	N=42
2 to 5 years	11%	N=61
6 to 10 years	13%	N=70
11 to 20 years	24%	N=126
More than 20 years	44%	N=236
Total	100%	N=536

Table 84: Question D7

Which best describes the building you live in?	Percent	Number
One family house detached from any other houses	86%	N=459
Building with two or more homes (duplex, townhome, apartment or condominium)	10%	N=54
Mobile home	3%	N=17
Other	1%	N=6
Total	100%	N=537



The National Citizen Survey™

Table 85: Question D8

Is this house, apartment or mobile home...	Percent	Number
Rented	25%	N=136
Owned	75%	N=401
Total	100%	N=537

Table 86: Question D9

About how much is your monthly housing cost for the place you live (including rent, mortgage payment, property tax, property insurance and homeowners' association (HOA) fees)?	Percent	Number
Less than \$300 per month	6%	N=32
\$300 to \$599 per month	8%	N=44
\$600 to \$999 per month	15%	N=79
\$1,000 to \$1,499 per month	24%	N=124
\$1,500 to \$2,499 per month	31%	N=164
\$2,500 or more per month	16%	N=82
Total	100%	N=525

Table 87: Question D10

Do any children 17 or under live in your household?	Percent	Number
No	73%	N=393
Yes	27%	N=144
Total	100%	N=536

Table 88: Question D11

Are you or any other members of your household aged 65 or older?	Percent	Number
No	59%	N=315
Yes	41%	N=220
Total	100%	N=535

Table 89: Question D12

How much do you anticipate your household's total income before taxes will be for the current year? (Please include in your total income money from all sources for all persons living in your household.)	Percent	Number
Less than \$25,000	15%	N=75
\$25,000 to \$49,999	20%	N=102
\$50,000 to \$99,999	34%	N=175
\$100,000 to \$149,999	18%	N=92
\$150,000 or more	13%	N=65
Total	100%	N=509

Table 90: Question D13

Are you Spanish, Hispanic or Latino?	Percent	Number
No, not Spanish, Hispanic or Latino	97%	N=511
Yes, I consider myself to be Spanish, Hispanic or Latino	3%	N=18
Total	100%	N=529

The National Citizen Survey™

Table 91: Question D14

What is your race? (Mark one or more races to indicate what race(s) you consider yourself to be.)	Percent	Number
American Indian or Alaskan Native	5%	N=27
Asian, Asian Indian or Pacific Islander	1%	N=7
Black or African American	1%	N=4
White	95%	N=503
Other	5%	N=28

Total may exceed 100% as respondents could select more than one option.

Table 92: Question D15

In which category is your age?	Percent	Number
18 to 24 years	1%	N=5
25 to 34 years	17%	N=90
35 to 44 years	14%	N=74
45 to 54 years	20%	N=107
55 to 64 years	16%	N=84
65 to 74 years	19%	N=103
75 years or older	13%	N=72
Total	100%	N=535

Table 93: Question D16

What is your sex?	Percent	Number
Female	52%	N=278
Male	48%	N=255
Total	100%	N=532

Table 94: Question D17

Do you consider a cell phone or landline your primary telephone number?	Percent	Number
Cell	52%	N=281
Land line	27%	N=145
Both	21%	N=111
Total	100%	N=537

## Appendix B: Benchmark Comparisons

### Comparison Data

NRC’s database of comparative resident opinion is comprised of resident perspectives gathered in surveys from over 500 communities whose residents evaluated the same kinds of topics on The National Citizen Survey™. The comparison evaluations are from the most recent survey completed in each community; most communities conduct surveys every year or in alternating years. NRC adds the latest results quickly upon survey completion, keeping the benchmark data fresh and relevant. The communities in the database represent a wide geographic and population range. Nevada County chose to have comparisons made to the entire database.

### Interpreting the Results

Ratings are compared when there are at least five communities in which a similar question was asked. Where comparisons are available, four columns are provided in the table. The first column is Nevada County’s “percent positive.” The percent positive is the combination of the top two most positive response options (i.e., “excellent” and “good,” “very safe” and “somewhat safe,” etc.), or, in the case of resident behaviors/participation, the percent positive represents the proportion of respondents indicating “yes” or participating in an activity at least once a month. The second column is the rank assigned to Nevada County’s rating among communities where a similar question was asked. The third column is the number of communities that asked a similar question. The final column shows the comparison of Nevada County’s rating to the benchmark.

In that final column, Nevada County’s results are noted as being “higher” than the benchmark, “lower” than the benchmark or “similar” to the benchmark, meaning that the average rating given by Nevada County residents is statistically similar to or different (greater or lesser) than the benchmark. More extreme differences are noted as “much higher” or “much lower.”

Benchmark Database Characteristics	
Region	Percent
New England	3%
Middle Atlantic	5%
East North Central	15%
West North Central	13%
South Atlantic	22%
East South Central	3%
West South Central	7%
Mountain	16%
Pacific	16%
Population	Percent
Less than 10,000	10%
10,000 to 24,999	22%
25,000 to 49,999	23%
50,000 to 99,999	22%
100,000 or more	23%

## National Benchmark Comparisons

Table 95: Community Characteristics General

	Percent positive	Rank	Number of communities in comparison	Comparison to benchmark
The overall quality of life in Nevada County	89%	127	437	Similar
Overall image or reputation of Nevada County	79%	132	326	Similar
Nevada County as a place to live	94%	140	373	Similar
Your neighborhood as a place to live	91%	62	292	Similar
Nevada County as a place to raise children	83%	173	363	Similar
Nevada County as a place to retire	81%	31	337	Higher

Table 96: Community Characteristics by Facet

		Percent positive	Rank	Number of communities in comparison	Comparison to benchmark
Safety	Overall feeling of safety in Nevada County	82%	177	310	Similar
	In your neighborhood during the day	97%	93	337	Similar
	In Nevada County's downtown/commercial areas during the day	92%	145	292	Similar
Mobility	Overall ease of getting to the places you usually have to visit	77%	108	218	Similar
	Availability of paths and walking trails	71%	97	293	Similar
	Ease of walking in Nevada County	55%	185	278	Similar
	Ease of travel by bicycle in Nevada County	34%	226	281	Lower
	Ease of travel by public transportation in Nevada County	24%	146	184	Lower
	Ease of travel by car in Nevada County	73%	93	282	Similar
Natural Environment	Traffic flow on major streets	58%	104	328	Similar
	Quality of overall natural environment in Nevada County	94%	19	256	Higher
	Air quality	76%	135	222	Similar
	Built Environment	Overall "built environment" of Nevada County (including overall design, buildings, parks and transportation systems)	59%	121	207
Availability of affordable quality housing		20%	258	282	Lower
Variety of housing options		28%	238	258	Lower
Public places where people want to spend time		67%	89	199	Similar
Economy	Overall economic health of Nevada County	46%	155	213	Similar
	Overall quality of business and service establishments in Nevada County	62%	143	250	Similar
	Cost of living in Nevada County	28%	173	210	Similar
	Shopping opportunities	43%	191	273	Similar
	Employment opportunities	19%	248	292	Lower
	Nevada County as a place to visit	94%	16	227	Much higher
	Nevada County as a place to work	38%	289	338	Lower
Recreation and Wellness	Health and wellness opportunities in Nevada County	63%	135	208	Similar
	Availability of affordable quality mental health care	44%	100	181	Similar
	Availability of preventive health services	55%	142	213	Similar
	Availability of affordable quality health care	47%	179	239	Similar
	Availability of affordable quality food	71%	75	214	Similar
	Recreational opportunities	87%	15	279	Higher
Education and Enrichment	Fitness opportunities (including exercise classes and paths or trails, etc.)	83%	25	199	Higher
	Overall opportunities for education and enrichment	65%	133	209	Similar
	Opportunities to participate in religious or spiritual events and activities	88%	25	184	Similar
	Opportunities to attend cultural/arts/music activities	85%	16	277	Much higher

The National Citizen Survey™

		Percent positive	Rank	Number of communities in comparison	Comparison to benchmark
	Adult educational opportunities	60%	86	187	Similar
	K-12 education	75%	135	250	Similar
	Availability of affordable quality child care/preschool	58%	108	229	Similar
Community Engagement	Opportunities to participate in social events and activities	81%	19	239	Higher
	Neighborliness of Nevada County	77%	25	202	Similar
	Openness and acceptance of the community toward people of diverse backgrounds	57%	174	272	Similar
	Opportunities to participate in community matters	84%	7	251	Higher
	Opportunities to volunteer	93%	3	243	Higher

Table 97: Governance General

	Percent positive	Rank	Number of communities in comparison	Comparison to benchmark
Services provided by the County of Nevada County	75%	224	413	Similar
Overall customer service by Nevada County employees (receptionists, planners, Sheriff, etc.)	75%	191	354	Similar
Value of services for the taxes paid to Nevada County	46%	259	381	Similar
Overall direction that Nevada County is taking	43%	244	296	Similar
Job Nevada County government does at welcoming citizen involvement	50%	164	298	Similar
Overall confidence in Nevada County government	43%	150	211	Similar
Generally acting in the best interest of the community	48%	151	211	Similar
Treating all residents fairly	51%	136	209	Similar
Services provided by the Federal Government	29%	218	228	Similar

Table 98: Governance by Facet

	Percent positive	Rank	Number of communities in comparison	Comparison to benchmark	
Safety	Sheriff services	80%	246	440	Similar
	Crime prevention	63%	226	336	Similar
	Fire prevention and education	82%	127	264	Similar
	Animal control	65%	168	322	Similar
	Emergency preparedness (services that prepare the community for natural disasters or other emergency situations)	61%	146	257	Similar
Mobility	Traffic enforcement	61%	220	352	Similar
	Street repair	25%	328	380	Lower
	Street cleaning	49%	231	302	Similar
	Snow removal	71%	106	279	Similar
	Bus or transit services	37%	159	205	Similar
Natural Environment	Garbage collection	81%	224	342	Similar
	Recycling	73%	252	340	Similar
	Yard waste pick-up	73%	145	257	Similar
	Preservation of natural areas such as open space, farmlands and greenbelts	68%	80	236	Similar
Built Environment	Storm drainage	57%	216	335	Similar
	Sewer services	76%	163	307	Similar
	Land use, planning and zoning	41%	197	284	Similar
Economy	Economic development	37%	264	370	Similar
Recreation and Wellness	Code enforcement (weeds, abandoned buildings, etc.)	33%	208	264	Similar
	Recreation programs or classes	70%	154	307	Similar
	Recreation centers or facilities	62%	184	259	Similar

The National Citizen Survey™

		Percent positive	Rank	Number of communities in comparison	Comparison to benchmark
	Health services	52%	156	193	Similar
Education and Enrichment	Public library services	84%	223	326	Similar
Community Engagement	Public information services	67%	148	263	Similar

Table 99: Participation General

	Percent positive	Rank	Number of communities in comparison	Comparison to benchmark
Sense of community	76%	48	292	Similar
Recommend living in Nevada County to someone who asks	93%	73	263	Similar
Remain in Nevada County for the next five years	93%	11	254	Higher
Contacted Nevada County (in-person, phone, email or web) for help or information	41%	191	293	Similar

Table 100: Participation by Facet

		Percent positive	Rank	Number of communities in comparison	Comparison to benchmark
Safety	Stocked supplies in preparation for an emergency	47%	35	182	Higher
	Did NOT report a crime to the Sheriff	82%	78	205	Similar
	Household member was NOT a victim of a crime	90%	117	253	Similar
Mobility	Used bus, rail, subway or other public transportation instead of driving	8%	130	167	Lower
	Carpooled with other adults or children instead of driving alone	56%	15	193	Higher
	Walked or biked instead of driving	57%	93	200	Similar
Natural Environment	Made efforts to conserve water	94%	18	188	Higher
	Made efforts to make your home more energy efficient	80%	34	188	Similar
	Recycle at home	98%	11	235	Higher
Built Environment	Did NOT observe a code violation or other hazard in Nevada County	39%	165	195	Lower
	NOT experiencing housing costs stress	60%	202	233	Similar
Economy	Purchase goods or services from a business located in Nevada County	99%	19	198	Similar
	Economy will have positive impact on income	26%	155	234	Similar
	Work inside boundaries of Nevada County	55%	56	199	Higher
Recreation and Wellness	Visited a community park	87%	89	248	Similar
	Eat at least 5 portions of fruits and vegetables a day	87%	50	190	Similar
	Participate in moderate or vigorous physical activity	90%	29	194	Similar
	In very good to excellent health	67%	77	194	Similar
Education and Enrichment	Used Nevada County public libraries or their services	56%	175	223	Similar
	Participated in religious or spiritual activities in Nevada County	45%	97	182	Similar
	Attended County-sponsored event	53%	108	200	Similar
Community Engagement	Campaigned or advocated for an issue, cause or candidate	38%	11	181	Higher
	Contacted Nevada County elected officials (in-person, phone, email or web) to express your opinion	25%	22	197	Similar
	Volunteered your time to some group/activity in	63%	12	241	Much higher

The National Citizen Survey™

	Percent positive	Rank	Number of communities in comparison	Comparison to benchmark
Nevada County				
Participated in a club	49%	5	217	Much higher
Talked to or visited with your immediate neighbors	96%	18	194	Similar
Done a favor for a neighbor	91%	10	189	Similar
Attended a local public meeting	30%	33	241	Similar
Watched (online or on television) a local public meeting	20%	136	205	Similar
Read or watch local news (via television, paper, computer, etc.)	89%	59	199	Similar
Vote in local elections	93%	6	235	Higher

Communities included in national comparisons

The communities included in Nevada County’s comparisons are listed on the following pages along with their population according to the 2010 Census.

Adams County, CO .....	441,603	Bellingham city, WA .....	80,885
Airway Heights city, WA .....	6,114	Benbrook city, TX.....	21,234
Albany city, OR .....	50,158	Bend city, OR.....	76,639
Albemarle County, VA.....	98,970	Bettendorf city, IA.....	33,217
Albert Lea city, MN.....	18,016	Billings city, MT.....	104,170
Alexandria city, VA.....	139,966	Blaine city, MN.....	57,186
Algonquin village, IL.....	30,046	Bloomfield Hills city, MI .....	3,869
Aliso Viejo city, CA .....	47,823	Bloomington city, IN .....	80,405
Altoona city, IA .....	14,541	Bloomington city, MN .....	82,893
American Canyon city, CA.....	19,454	Blue Springs city, MO .....	52,575
Ames city, IA .....	58,965	Boise City city, ID .....	205,671
Andover CDP, MA.....	8,762	Bonner Springs city, KS .....	7,314
Ankeny city, IA .....	45,582	Boone County, KY .....	118,811
Ann Arbor city, MI .....	113,934	Boulder city, CO .....	97,385
Annapolis city, MD .....	38,394	Bowling Green city, KY .....	58,067
Apache Junction city, AZ.....	35,840	Bozeman city, MT .....	37,280
Arapahoe County, CO .....	572,003	Brentwood city, MO.....	8,055
Arkansas City city, AR.....	366	Brentwood city, TN .....	37,060
Arlington city, TX .....	365,438	Brighton city, CO.....	33,352
Arvada city, CO .....	106,433	Brighton city, MI .....	7,444
Asheville city, NC .....	83,393	Bristol city, TN .....	26,702
Ashland city, OR .....	20,078	Broken Arrow city, OK .....	98,850
Ashland town, MA.....	16,593	Brookfield city, WI .....	37,920
Ashland town, VA.....	7,225	Brookline CDP, MA .....	58,732
Aspen city, CO .....	6,658	Brooklyn Center city, MN .....	30,104
Athens-Clarke County, GA, .....	115,452	Brooklyn city, OH .....	11,169
Auburn city, AL .....	53,380	Broomfield city, CO .....	55,889
Augusta CCD, GA .....	134,777	Brownsburg town, IN .....	21,285
Aurora city, CO .....	325,078	Burien city, WA .....	33,313
Austin city, TX .....	790,390	Burleson city, TX.....	36,690
Avon town, CO .....	6,447	Burlingame city, CA.....	28,806
Avon town, IN .....	12,446	Cabarrus County, NC.....	178,011
Avondale city, AZ .....	76,238	Cambridge city, MA .....	105,162
Azusa city, CA.....	46,361	Cannon Beach city, OR .....	1,690
Bainbridge Island city, WA.....	23,025	Cañon City city, CO .....	16,400
Baltimore city, MD.....	620,961	Canton city, SD .....	3,057
Bartonville town, TX.....	1,469	Cape Coral city, FL .....	154,305
Battle Creek city, MI.....	52,347	Cape Girardeau city, MO.....	37,941
Bay City city, MI.....	34,932	Carlisle borough, PA .....	18,682
Bay Village city, OH.....	15,651	Carlsbad city, CA.....	105,328
Baytown city, TX.....	71,802	Carroll city, IA.....	10,103
Bedford city, TX .....	46,979	Cartersville city, GA.....	19,731
Bedford town, MA .....	13,320	Cary town, NC .....	135,234
Bellevue city, WA .....	122,363	Castine town, ME .....	1,366

The National Citizen Survey™

Castle Pines North city, CO	10,360	Dublin city, CA	46,036
Castle Rock town, CO	48,231	Dublin city, OH	41,751
Cedar Hill city, TX	45,028	Duluth city, MN	86,265
Cedar Rapids city, IA	126,326	Durham city, NC	228,330
Celina city, TX	6,028	Durham County, NC	267,587
Centennial city, CO	100,377	Eagan city, MN	64,206
Chandler city, AZ	236,123	Eagle Mountain city, UT	21,415
Chandler city, TX	2,734	Eagle town, CO	6,508
Chanhassen city, MN	22,952	East Grand Forks city, MN	8,601
Chapel Hill town, NC	57,233	East Lansing city, MI	48,579
Charles County, MD	146,551	Eau Claire city, WI	65,883
Charlotte city, NC	731,424	Eden Prairie city, MN	60,797
Charlotte County, FL	159,978	Edgerton city, KS	1,671
Charlottesville city, VA	43,475	Edgewater city, CO	5,170
Chattanooga city, TN	167,674	Edina city, MN	47,941
Chautauqua town, NY	4,464	Edmond city, OK	81,405
Chesterfield County, VA	316,236	Edmonds city, WA	39,709
Citrus Heights city, CA	83,301	El Cerrito city, CA	23,549
Clackamas County, OR	375,992	El Dorado County, CA	181,058
Clarendon Hills village, IL	8,427	Elk Grove city, CA	153,015
Clayton city, MO	15,939	Elko New Market city, MN	4,110
Clearwater city, FL	107,685	Elmhurst city, IL	44,121
Cleveland Heights city, OH	46,121	Encinitas city, CA	59,518
Clinton city, SC	8,490	Englewood city, CO	30,255
Clive city, IA	15,447	Erie town, CO	18,135
Clovis city, CA	95,631	Escambia County, FL	297,619
College Park city, MD	30,413	Estes Park town, CO	5,858
College Station city, TX	93,857	Euclid city, OH	48,920
Colleyville city, TX	22,807	Fairview town, TX	7,248
Columbia city, MO	108,500	Farmersville city, TX	3,301
Columbia city, SC	129,272	Fayetteville city, NC	200,564
Columbia Falls city, MT	4,688	Fishers town, IN	76,794
Concord city, CA	122,067	Flagstaff city, AZ	65,870
Concord town, MA	17,668	Flower Mound town, TX	64,669
Coon Rapids city, MN	61,476	Forest Grove city, OR	21,083
Copperas Cove city, TX	32,032	Fort Collins city, CO	143,986
Coral Springs city, FL	121,096	Fort Lauderdale city, FL	165,521
Coronado city, CA	18,912	Fort Smith city, AR	86,209
Corvallis city, OR	54,462	Franklin city, TN	62,487
Cottonwood Heights city, UT	33,433	Fremont city, CA	214,089
Creve Coeur city, MO	17,833	Friendswood city, TX	35,805
Cross Roads town, TX	1,563	Fruita city, CO	12,646
Dacono city, CO	4,152	Gahanna city, OH	33,248
Dade City city, FL	6,437	Gaithersburg city, MD	59,933
Dakota County, MN	398,552	Galveston city, TX	47,743
Dallas city, OR	14,583	Gardner city, KS	19,123
Dallas city, TX	1,197,816	Georgetown city, TX	47,400
Danville city, KY	16,218	Germantown city, TN	38,844
Dardenne Prairie city, MO	11,494	Gilbert town, AZ	208,453
Darien city, IL	22,086	Gillette city, WY	29,087
Davenport city, FL	2,888	Glendora city, CA	50,073
Davenport city, IA	99,685	Glenview village, IL	44,692
Davidson town, NC	10,944	Globe city, AZ	7,532
Dayton city, OH	141,527	Golden city, CO	18,867
Dayton town, WY	757	Golden Valley city, MN	20,371
Decatur city, GA	19,335	Goodyear city, AZ	65,275
Del Mar city, CA	4,161	Grafton village, WI	11,459
DeLand city, FL	27,031	Grand Blanc city, MI	8,276
Delaware city, OH	34,753	Grants Pass city, OR	34,533
Delray Beach city, FL	60,522	Grass Valley city, CA	12,860
Denison city, TX	22,682	Greeley city, CO	92,889
Denton city, TX	113,383	Greenville city, NC	84,554
Denver city, CO	600,158	Greenwich town, CT	61,171
Derby city, KS	22,158	Greenwood Village city, CO	13,925
Des Moines city, IA	203,433	Greer city, SC	25,515
Des Peres city, MO	8,373	Gunnison County, CO	15,324
Destin city, FL	12,305	Hailey city, ID	7,960
Dothan city, AL	65,496	Haines Borough, AK	2,508
Douglas County, CO	285,465	Haltom City city, TX	42,409
Dover city, NH	29,987	Hamilton city, OH	62,477



The National Citizen Survey™

Hamilton town, MA .....	7,764	Lakewood city, WA .....	58,163
Hanover County, VA .....	99,863	Lane County, OR .....	351,715
Harrisburg city, SD .....	4,089	Lansing city, MI .....	114,297
Harrisonburg city, VA .....	48,914	Laramie city, WY .....	30,816
Harrisonville city, MO .....	10,019	Larimer County, CO .....	299,630
Hayward city, CA .....	144,186	Las Cruces city, NM .....	97,618
Henderson city, NV .....	257,729	Las Vegas city, NV .....	583,756
Herndon town, VA .....	23,292	Lawrence city, KS .....	87,643
High Point city, NC .....	104,371	Lawrenceville city, GA .....	28,546
Highland Park city, IL .....	29,763	Lee's Summit city, MO .....	91,364
Highlands Ranch CDP, CO .....	96,713	Lehi city, UT .....	47,407
Holland city, MI .....	33,051	Lenexa city, KS .....	48,190
Homer Glen village, IL .....	24,220	Lewis County, NY .....	27,087
Honolulu County, HI .....	953,207	Lewiston city, ID .....	31,894
Hooksett town, NH .....	13,451	Lewisville city, TX .....	95,290
Hopkins city, MN .....	17,591	Lewisville town, NC .....	12,639
Hopkinton town, MA .....	14,925	Libertyville village, IL .....	20,315
Hoquiam city, WA .....	8,726	Lincoln city, NE .....	258,379
Horry County, SC .....	269,291	Lindsborg city, KS .....	3,458
Howard village, WI .....	17,399	Little Chute village, WI .....	10,449
Hudson city, OH .....	22,262	Littleton city, CO .....	41,737
Hudson town, CO .....	2,356	Livermore city, CA .....	80,968
Huntley village, IL .....	24,291	Lombard village, IL .....	43,165
Hurst city, TX .....	37,337	Lone Tree city, CO .....	10,218
Hutchinson city, MN .....	14,178	Long Grove village, IL .....	8,043
Hutto city, TX .....	14,698	Longmont city, CO .....	86,270
Independence city, MO .....	116,830	Longview city, TX .....	80,455
Indianola city, IA .....	14,782	Lonsdale city, MN .....	3,674
Indio city, CA .....	76,036	Los Alamos County, NM .....	17,950
Iowa City city, IA .....	67,862	Los Altos Hills town, CA .....	7,922
Irving city, TX .....	216,290	Louisville city, CO .....	18,376
Issaquah city, WA .....	30,434	Lower Merion township, PA .....	57,825
Jackson County, MI .....	160,248	Lynchburg city, VA .....	75,568
James City County, VA .....	67,009	Lynnwood city, WA .....	35,836
Jefferson County, NY .....	116,229	Macomb County, MI .....	840,978
Jefferson Parish, LA .....	432,552	Manassas city, VA .....	37,821
Johnson City city, TN .....	63,152	Manhattan Beach city, CA .....	35,135
Johnston city, IA .....	17,278	Manhattan city, KS .....	52,281
Jupiter town, FL .....	55,156	Mankato city, MN .....	39,309
Kalamazoo city, MI .....	74,262	Maple Grove city, MN .....	61,567
Kansas City city, KS .....	145,786	Maricopa County, AZ .....	3,817,117
Kansas City city, MO .....	459,787	Marion city, IA .....	34,768
Keizer city, OR .....	36,478	Marshfield city, WI .....	19,118
Kenmore city, WA .....	20,460	Martinez city, CA .....	35,824
Kennedale city, TX .....	6,763	Marysville city, WA .....	60,020
Kennett Square borough, PA .....	6,072	Matthews town, NC .....	27,198
Kent city, WA .....	92,411	McAllen city, TX .....	129,877
Kerrville city, TX .....	22,347	McKinney city, TX .....	131,117
Kettering city, OH .....	56,163	McMinnville city, OR .....	32,187
Key West city, FL .....	24,649	Menlo Park city, CA .....	32,026
King City city, CA .....	12,874	Menomonee Falls village, WI .....	35,626
King County, WA .....	1,931,249	Mercer Island city, WA .....	22,699
Kirkland city, WA .....	48,787	Meridian charter township, MI .....	39,688
Kirkwood city, MO .....	27,540	Meridian city, ID .....	75,092
Knoxville city, IA .....	7,313	Merriam city, KS .....	11,003
La Mesa city, CA .....	57,065	Mesa city, AZ .....	439,041
La Plata town, MD .....	8,753	Mesa County, CO .....	146,723
La Porte city, TX .....	33,800	Miami Beach city, FL .....	87,779
La Vista city, NE .....	15,758	Miami city, FL .....	399,457
Lafayette city, CO .....	24,453	Middleton city, WI .....	17,442
Laguna Beach city, CA .....	22,723	Midland city, MI .....	41,863
Laguna Niguel city, CA .....	62,979	Milford city, DE .....	9,559
Lake Forest city, IL .....	19,375	Milton city, GA .....	32,661
Lake in the Hills village, IL .....	28,965	Minneapolis city, MN .....	382,578
Lake Oswego city, OR .....	36,619	Missouri City city, TX .....	67,358
Lake Stevens city, WA .....	28,069	Modesto city, CA .....	201,165
Lake Worth city, FL .....	34,910	Monterey city, CA .....	27,810
Lake Zurich village, IL .....	19,631	Montgomery city, MN .....	2,956
Lakeville city, MN .....	55,954	Monticello city, UT .....	1,972
Lakewood city, CO .....	142,980	Montrose city, CO .....	19,132

## The National Citizen Survey™

Monument town, CO .....	5,530	Pinehurst village, NC .....	13,124
Mooreville town, NC .....	32,711	Piqua city, OH .....	20,522
Moraga town, CA .....	16,016	Pitkin County, CO .....	17,148
Morristown city, TN .....	29,137	Plano city, TX .....	259,841
Morrisville town, NC .....	18,576	Platte City city, MO .....	4,691
Morro Bay city, CA .....	10,234	Pleasant Hill city, IA .....	8,785
Mountain Village town, CO .....	1,320	Pleasanton city, CA .....	70,285
Mountlake Terrace city, WA .....	19,909	Plymouth city, MN .....	70,576
Murphy city, TX .....	17,708	Polk County, IA .....	430,640
Naperville city, IL .....	141,853	Pompano Beach city, FL .....	99,845
Napoleon city, OH .....	8,749	Port Orange city, FL .....	56,048
Needham CDP, MA .....	28,886	Portland city, OR .....	583,776
Nevada City city, CA .....	3,068	Post Falls city, ID .....	27,574
Nevada County, CA .....	98,764	Powell city, OH .....	11,500
New Braunfels city, TX .....	57,740	Prince William County, VA .....	402,002
New Brighton city, MN .....	21,456	Prior Lake city, MN .....	22,796
New Hanover County, NC .....	202,667	Pueblo city, CO .....	106,595
New Hope city, MN .....	20,339	Purcellville town, VA .....	7,727
New Orleans city, LA .....	343,829	Queen Creek town, AZ .....	26,361
New Port Richey city, FL .....	14,911	Raleigh city, NC .....	403,892
New Smyrna Beach city, FL .....	22,464	Ramsey city, MN .....	23,668
New Ulm city, MN .....	13,522	Raymond town, ME .....	4,436
Newberg city, OR .....	22,068	Raymore city, MO .....	19,206
Newport city, RI .....	24,672	Redmond city, OR .....	26,215
Newport News city, VA .....	180,719	Redmond city, WA .....	54,144
Newton city, IA .....	15,254	Reno city, NV .....	225,221
Noblesville city, IN .....	51,969	Reston CDP, VA .....	58,404
Nogales city, AZ .....	20,837	Richland city, WA .....	48,058
Norcross city, GA .....	9,116	Richmond Heights city, MO .....	8,603
Norfolk city, VA .....	242,803	Rio Rancho city, NM .....	87,521
North Mankato city, MN .....	13,394	River Falls city, WI .....	15,000
North Port city, FL .....	57,357	Riverside city, CA .....	303,871
North Richland Hills city, TX .....	63,343	Riverside city, MO .....	2,937
North Yarmouth town, ME .....	3,565	Roanoke city, VA .....	97,032
Novato city, CA .....	51,904	Roanoke County, VA .....	92,376
Novi city, MI .....	55,224	Rochester Hills city, MI .....	70,995
O'Fallon city, IL .....	28,281	Rock Hill city, SC .....	66,154
O'Fallon city, MO .....	79,329	Rockville city, MD .....	61,209
Oak Park village, IL .....	51,878	Roeland Park city, KS .....	6,731
Oakland city, CA .....	390,724	Rogers city, MN .....	8,597
Oakley city, CA .....	35,432	Rohnert Park city, CA .....	40,971
Oklahoma City city, OK .....	579,999	Rolla city, MO .....	19,559
Olathe city, KS .....	125,872	Roselle village, IL .....	22,763
Old Town city, ME .....	7,840	Rosemount city, MN .....	21,874
Olmsted County, MN .....	144,248	Rosenberg city, TX .....	30,618
Olympia city, WA .....	46,478	Roseville city, MN .....	33,660
Orland Park village, IL .....	56,767	Round Rock city, TX .....	99,887
Oshkosh city, WI .....	66,083	Royal Oak city, MI .....	57,236
Oshtemo charter township, MI .....	21,705	Saco city, ME .....	18,482
Oswego village, IL .....	30,355	Sahuarita town, AZ .....	25,259
Otsego County, MI .....	24,164	Salida city, CO .....	5,236
Ottawa County, MI .....	263,801	Sammamish city, WA .....	45,780
Paducah city, KY .....	25,024	San Anselmo town, CA .....	12,336
Palm Beach Gardens city, FL .....	48,452	San Carlos city, CA .....	28,406
Palm Coast city, FL .....	75,180	San Diego city, CA .....	1,307,402
Palo Alto city, CA .....	64,403	San Francisco city, CA .....	805,235
Palos Verdes Estates city, CA .....	13,438	San Jose city, CA .....	945,942
Papillion city, NE .....	18,894	San Juan County, NM .....	130,044
Paradise Valley town, AZ .....	12,820	San Marcos city, CA .....	83,781
Park City city, UT .....	7,558	San Marcos city, TX .....	44,894
Parker town, CO .....	45,297	San Rafael city, CA .....	57,713
Parkland city, FL .....	23,962	Sanford city, FL .....	53,570
Pasco city, WA .....	59,781	Sangamon County, IL .....	197,465
Pasco County, FL .....	464,697	Santa Clarita city, CA .....	176,320
Payette city, ID .....	7,433	Santa Fe city, NM .....	67,947
Pearland city, TX .....	91,252	Santa Fe County, NM .....	144,170
Peoria city, AZ .....	154,065	Santa Monica city, CA .....	89,736
Peoria city, IL .....	115,007	Sarasota County, FL .....	379,448
Pflugerville city, TX .....	46,936	Savage city, MN .....	26,911
Phoenix city, AZ .....	1,445,632	Schaumburg village, IL .....	74,227

The National Citizen Survey™

Schertz city, TX.....	31,465	Tigard city, OR.....	48,035
Scott County, MN.....	129,928	Tracy city, CA.....	82,922
Scottsdale city, AZ.....	217,385	Trinidad CCD, CO.....	12,017
Seaside city, CA.....	33,025	Tualatin city, OR.....	26,054
Sevierville city, TN.....	14,807	Tulsa city, OK.....	391,906
Shakopee city, MN.....	37,076	Twin Falls city, ID.....	44,125
Sharonville city, OH.....	13,560	Tyler city, TX.....	96,900
Shawnee city, KS.....	62,209	University Heights city, OH.....	13,539
Shawnee city, OK.....	29,857	University Park city, TX.....	23,068
Sherborn town, MA.....	4,119	Upper Arlington city, OH.....	33,771
Shoreview city, MN.....	25,043	Urbandale city, IA.....	39,463
Shorewood village, IL.....	15,615	Vail town, CO.....	5,305
Shorewood village, WI.....	13,162	Vancouver city, WA.....	161,791
Sierra Vista city, AZ.....	43,888	Ventura CCD, CA.....	111,889
Silverton city, OR.....	9,222	Vernon Hills village, IL.....	25,113
Sioux Center city, IA.....	7,048	Vestavia Hills city, AL.....	34,033
Sioux Falls city, SD.....	153,888	Victoria city, MN.....	7,345
Skokie village, IL.....	64,784	Vienna town, VA.....	15,687
Snellville city, GA.....	18,242	Virginia Beach city, VA.....	437,994
South Jordan city, UT.....	50,418	Walnut Creek city, CA.....	64,173
South Lake Tahoe city, CA.....	21,403	Washington County, MN.....	238,136
Southlake city, TX.....	26,575	Washington town, NH.....	1,123
Spearfish city, SD.....	10,494	Washoe County, NV.....	421,407
Spring Hill city, KS.....	5,437	Washougal city, WA.....	14,095
Springboro city, OH.....	17,409	Wauwatosa city, WI.....	46,396
Springfield city, MO.....	159,498	Waverly city, IA.....	9,874
Springville city, UT.....	29,466	Weddington town, NC.....	9,459
St. Augustine city, FL.....	12,975	Wentzville city, MO.....	29,070
St. Charles city, IL.....	32,974	West Carrollton city, OH.....	13,143
St. Cloud city, FL.....	35,183	West Chester borough, PA.....	18,461
St. Cloud city, MN.....	65,842	West Des Moines city, IA.....	56,609
St. Joseph city, MO.....	76,780	Western Springs village, IL.....	12,975
St. Joseph town, WI.....	3,842	Westerville city, OH.....	36,120
St. Louis County, MN.....	200,226	Westlake town, TX.....	992
State College borough, PA.....	42,034	Westminster city, CO.....	106,114
Steamboat Springs city, CO.....	12,088	Weston town, MA.....	11,261
Sterling Heights city, MI.....	129,699	White House city, TN.....	10,255
Sugar Grove village, IL.....	8,997	Wichita city, KS.....	382,368
Sugar Land city, TX.....	78,817	Williamsburg city, VA.....	14,068
Suisun City city, CA.....	28,111	Willowbrook village, IL.....	8,540
Summit city, NJ.....	21,457	Wilmington city, NC.....	106,476
Summit County, UT.....	36,324	Wilsonville city, OR.....	19,509
Summit village, IL.....	11,054	Windsor town, CO.....	18,644
Sunnyvale city, CA.....	140,081	Windsor town, CT.....	29,044
Surprise city, AZ.....	117,517	Winnetka village, IL.....	12,187
Suwanee city, GA.....	15,355	Winter Garden city, FL.....	34,568
Tacoma city, WA.....	198,397	Woodbury city, MN.....	61,961
Takoma Park city, MD.....	16,715	Woodland city, CA.....	55,468
Tamarac city, FL.....	60,427	Wrentham town, MA.....	10,955
Temecula city, CA.....	100,097	Wyandotte County, KS.....	157,505
Tempe city, AZ.....	161,719	Yakima city, WA.....	91,067
Temple city, TX.....	66,102	York County, VA.....	65,464
Texarkana city, TX.....	36,411	Yorktown town, IN.....	9,405
The Woodlands CDP, TX.....	93,847	Yorkville city, IL.....	16,921
Thousand Oaks city, CA.....	126,683	Yountville city, CA.....	2,933

## Appendix C: Detailed Survey Methods

The National Citizen Survey (The NCS™), conducted by National Research Center, Inc., was developed to provide communities an accurate, affordable and easy way to assess and interpret resident opinion about important local topics. Standardization of common questions and survey methods provide the rigor to assure valid results, and each community has enough flexibility to construct a customized version of The NCS.

Results offer insight into residents' perspectives about the community as a whole, including local amenities, services, public trust, resident participation and other aspects of the community in order to support budgeting, land use and strategic planning and communication with residents. Resident demographic characteristics permit comparison to the Census as well as comparison of results for different subgroups of residents. Nevada County funded this research. Please contact Taylor Wolfe, Nevada County Administrative Analyst at Taylor.Wolfe@co.nevada.ca.us if you have any questions about the survey.

### Survey Validity

The question of survey validity has two parts: 1) how can a community be confident that the results from those who completed the questionnaire are representative of the results that would have been obtained had the survey been administered to the entire population? and 2) how closely do the perspectives recorded on the survey reflect what residents really believe or do?

To answer the first question, the best survey research practices were used for the resources spent to ensure that the results from the survey respondents reflect the opinions of residents in the entire community. These practices include:

- Using a mail-out/mail-back methodology, which typically gets a higher response rate than phone for the same dollars spent. A higher response rate lessens the worry that those who did not respond are different than those who did respond.
- Selecting households at random within the community to receive the survey to ensure that the households selected to receive the survey are representative of the larger community.
- Over-sampling multi-family housing units to improve response from hard-to-reach, lower income or younger apartment dwellers.
- Selecting the respondent within the household using an unbiased sampling procedure; in this case, the "birthday method." The cover letter included an instruction requesting that the respondent in the household be the adult (18 years old or older) who most recently had a birthday, irrespective of year of birth.
- Contacting potential respondents three times to encourage response from people who may have different opinions or habits than those who would respond with only a single prompt.
- Inviting response in a compelling manner (using appropriate letterhead/logos and a signature of a visible leader) to appeal to recipients' sense of civic responsibility.
- Providing a pre-addressed, postage-paid return envelope.
- Offering the survey in Spanish or other language when requested by a given community.
- Weighting the results to reflect the demographics of the population.

The answer to the second question about how closely the perspectives recorded on the survey reflect what residents really believe or do is more complex. Resident responses to surveys are influenced by a variety of factors. For questions about service quality, residents' expectations for service quality play a role as well as the "objective" quality of the service provided, the way the resident perceives the entire community (that is, the context in which the service is provided), the scale on which the resident is asked to record his or her opinion and, of course, the opinion, itself, that a resident holds about the service. Similarly a resident's report of certain behaviors is colored by what he or she believes is the socially desirable response (e.g., reporting tolerant behaviors toward "oppressed groups," likelihood of voting for a tax increase for services to poor people, use of alternative modes of travel to work besides the single occupancy vehicle), his or her memory of the actual behavior (if it is not a question speculating about future actions, like a vote), his or her confidence that he or she can be honest without suffering any negative consequences (thus the need for anonymity) as well as the actual behavior itself.

How closely survey results come to recording the way a person really feels or behaves often is measured by the coincidence of reported behavior with observed current behavior (e.g., driving habits), reported intentions to behave with observed future behavior (e.g., voting choices) or reported opinions about current community quality

with objective characteristics of the community (e.g., feelings of safety correlated with rates of crime). There is a body of scientific literature that has investigated the relationship between reported behaviors and actual behaviors. Well-conducted surveys, by and large, do capture true respondent behaviors or intentions to act with great accuracy. Predictions of voting outcomes tend to be quite accurate using survey research, as do reported behaviors that are not about highly sensitive issues (e.g., family abuse or other illegal or morally sanctioned activities). For self-reports about highly sensitive issues, statistical adjustments can be made to correct for the respondents' tendency to report what they think the "correct" response should be.

Research on the correlation of resident opinion about service quality and "objective" ratings of service quality vary, with some showing stronger relationships than others. NRC's own research has demonstrated that residents who report the lowest ratings of street repair live in communities with objectively worse street conditions than those who report high ratings of street repair (based on road quality, delay in street repair, number of road repair employees). Similarly, the lowest rated fire services appear to be "objectively" worse than the highest rated fire services (expenditures per capita, response time, "professional" status of firefighters, breadth of services and training provided). Resident opinion commonly reflects objective performance data but is an important measure on its own. NRC principals have written, "If you collect trash three times a day but residents think that your trash haul is lousy, you still have a problem."

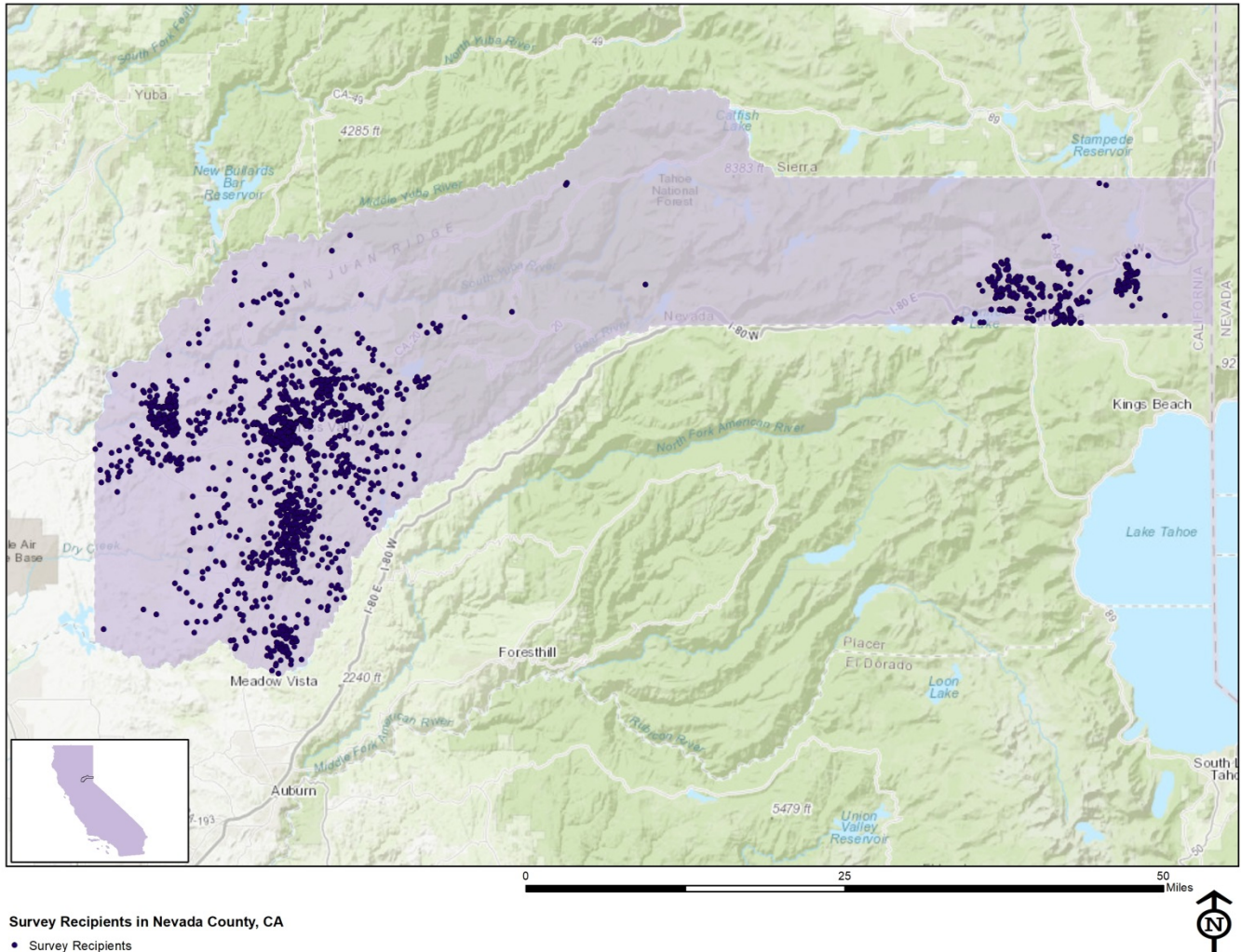
### Selecting Survey Recipients

"Sampling" refers to the method by which households were chosen to receive the survey. All households within Nevada County were eligible to participate in the survey. A list of all households within the zip codes serving Nevada County was purchased from [Go-Dog Direct](#) based on updated listings from the United States Postal Service. Since some of the zip codes that serve Nevada County households may also serve addresses that lie outside of the community, the exact geographic location of each housing unit was compared to community boundaries using the most current municipal boundary file (updated on a quarterly basis) and addresses located outside of Nevada County boundaries were removed from consideration.

To choose the 1,800 survey recipients, a systematic sampling method was applied to the list of households previously screened for geographic location. Systematic sampling is a procedure whereby a complete list of all possible households is culled, selecting every *Nth* one, giving each eligible household a known probability of selection, until the appropriate number of households is selected. Multi-family housing units were selected at a higher rate as residents of this type of housing typically respond at lower rates to surveys than do those in single-family housing units. Figure 1 displays a map of the households selected to receive the survey. In general, because of the random sampling techniques used, the displayed sampling density will closely mirror the overall housing unit density (which may be different from the population density). While the theory of probability assumes no bias in selection, there may be some minor variations in practice (meaning, an area with only 15% of the housing units might be selected at an actual rate that is slightly above or below that).

An individual within each household was selected using the birthday method. The birthday method selects a person within the household by asking the "person whose birthday has most recently passed" to complete the questionnaire. The underlying assumption in this method is that day of birth has no relationship to the way people respond to surveys. This instruction was contained in the cover letter accompanying the questionnaire.

Figure 1: Location of Survey Recipients



## Survey Administration and Response

Selected households received three mailings, one week apart, beginning on May 19, 2017. The first mailing was a prenotification postcard announcing the upcoming survey. The next mailing contained a letter from the District 4 Supervisor/Chair inviting the household to participate, a questionnaire and a postage-paid return envelope. The final mailing contained a reminder letter, another survey and a postage-paid return envelope. The second cover letter asked those who had not completed the survey to do so and those who had already done so to refrain from turning in another survey. Respondents could also opt to take the survey online. Completed surveys were collected over the following seven weeks.

About 4% of the 1,800 surveys mailed were returned because the housing unit was vacant or the postal service was unable to deliver the survey as addressed. Of the remaining 1,728 households that received the survey, 545 completed the survey, providing an overall response rate of 32%. Of the 545 completed surveys, 41 were completed online. The response rate was calculated using AAPOR's response rate #2<sup>1</sup> for mailed surveys of unnamed persons (see the table on the following page).

<sup>1</sup> See AAPOR's Standard Definitions here: [http://www.aapor.org/Standards-Ethics/Standard-Definitions-\(1\).aspx](http://www.aapor.org/Standards-Ethics/Standard-Definitions-(1).aspx) for more information

Table 101: Survey Response Rates

	Overall
Total sample used	1800
I=Complete Interviews	538
P=Partial Interviews	7
R=Refusal and break off	0
NC=Non Contact	0
O=Other	0
UH=Unknown household	0
UO=Unknown other	1173
Response rate: $(I+P)/(I+P) + (R+NC+O) + (UH+UO)$	32%

## Confidence Intervals

It is customary to describe the precision of estimates made from surveys by a “level of confidence” and accompanying “confidence interval” (or margin of error). A traditional level of confidence, and the one used here, is 95%. The 95% confidence interval can be any size and quantifies the sampling error or imprecision of the survey results because some residents’ opinions are relied on to estimate all residents’ opinions.<sup>2</sup>

The margin of error for the Nevada County survey is no greater than plus or minus four percentage points around any given percent reported for all respondents (545 completed surveys).

For subgroups of responses, the margin of error increases because the number of respondents for the subgroup is smaller. For subgroups of approximately 100 respondents, the margin of error is plus or minus 10 percentage points.

## Survey Processing (Data Entry)

Upon receipt, completed surveys were assigned a unique identification number. Additionally, each survey was reviewed and “cleaned” as necessary. For example, a question may have asked a respondent to pick two items out of a list of five, but the respondent checked three; in this case, NRC would use protocols to randomly choose two of the three selected items for inclusion in the dataset.

All surveys then were entered twice into an electronic dataset; any discrepancies were resolved in comparison to the original survey form. Range checks as well as other forms of quality control were also performed.

NRC used Qualtrics, a web-based survey and analytics platform, to collect the online survey data. Use of an online system means all collected data are entered into the dataset when the respondents submit the surveys. Skip patterns are programmed into system so respondents are automatically “skipped” to the appropriate question based on the individual responses being given. Online programming also allows for more rigid control of the data format, making extensive data cleaning unnecessary.

A series of quality control checks were also performed in order to ensure the integrity of the web data. Steps may include and not be limited to reviewing the data for clusters of repeat IP addresses and time stamps (indicating duplicate responses) and removing empty submissions (questionnaires submitted with no questions answered).

## Survey Data Weighting

The demographic characteristics of the survey respondents were compared to those found in the 2010 Census and American Community Survey estimates for adults in Nevada County. The primary objective of weighting survey data is to make the survey respondents reflective of the larger population of the community. The characteristics used for weighting were housing tenure (rent or own), housing unit type (attached or detached), sex and age. No

<sup>2</sup> A 95% confidence interval indicates that for every 100 random samples of this many residents, 95 of the confidence intervals created will include the “true” population response. This theory is applied in practice to mean that the “true” perspective of the target population lies within the confidence interval created for a single survey. For example, if 75% of residents rate a service as “excellent” or “good,” then the 4% margin of error (for the 95% confidence interval) indicates that the range of likely responses for the entire community is between 71% and 79%. This source of uncertainty is called sampling error. In addition to sampling error, other sources of error may affect any survey, including the non-response of residents with opinions different from survey responders. Though standardized on The NCS, on other surveys, differences in question wording, order, translation and data entry, as examples, can lead to somewhat varying results.

adjustments were made for design effects. The results of the weighting scheme are presented in the following table.

Table 102: Nevada County, CA 2017 Weighting Table

Characteristic	Population Norm	Unweighted Data	Weighted Data
<b>Housing</b>			
Rent home	28%	13%	25%
Own home	72%	87%	75%
Detached unit	89%	89%	89%
Attached unit	11%	11%	11%
<b>Race and Ethnicity</b>			
White	93%	90%	88%
Not white	7%	10%	12%
Not Hispanic	93%	97%	97%
Hispanic	7%	3%	3%
<b>Sex and Age</b>			
Female	51%	53%	52%
Male	49%	47%	48%
18-34 years of age	20%	4%	18%
35-54 years of age	33%	18%	34%
55+ years of age	47%	78%	48%
Females 18-34	10%	3%	9%
Females 35-54	17%	11%	18%
Females 55+	24%	40%	25%
Males 18-34	11%	2%	8%
Males 35-54	16%	7%	16%
Males 55+	22%	38%	23%

## Survey Data Analysis and Reporting

The survey dataset was analyzed using the Statistical Package for the Social Sciences (SPSS). For the most part, the percentages presented in the reports represent the “percent positive.” The percent positive is the combination of the top two most positive response options (i.e., “excellent” and “good,” “very safe” and “somewhat safe,” “essential” and “very important,” etc.), or, in the case of resident behaviors/participation, the percent positive represents the proportion of respondents indicating “yes” or participating in an activity at least once a month.

On many of the questions in the survey respondents may answer “don’t know.” The proportion of respondents giving this reply is shown in the full set of responses included in Appendix A. However, these responses have been removed from the analyses presented in the reports. In other words, the tables and graphs display the responses from respondents who had an opinion about a specific item.



## Appendix D: Survey Materials

Dear Nevada County Resident,

It won't take much of your time to make a big difference!

Your household has been randomly selected to participate in a survey about your community. Your survey will arrive in a few days.

Thank you for helping create a better county!

Sincerely,



Hank Weston  
District 4 Supervisor and Chair

Dear Nevada County Resident,

It won't take much of your time to make a big difference!

Your household has been randomly selected to participate in a survey about your community. Your survey will arrive in a few days.

Thank you for helping create a better county!

Sincerely,



Hank Weston  
District 4 Supervisor and Chair

Dear Nevada County Resident,

It won't take much of your time to make a big difference!

Your household has been randomly selected to participate in a survey about your community. Your survey will arrive in a few days.

Thank you for helping create a better county!

Sincerely,



Hank Weston  
District 4 Supervisor and Chair

Dear Nevada County Resident,

It won't take much of your time to make a big difference!

Your household has been randomly selected to participate in a survey about your community. Your survey will arrive in a few days.

Thank you for helping create a better county!

Sincerely,



Hank Weston  
District 4 Supervisor and Chair



County of Nevada  
950 Maidu Avenue, Suite 200  
Nevada City, CA 95959

Presorted  
First Class Mail  
US Postage  
PAID  
Boulder, CO  
Permit NO. 94



County of Nevada  
950 Maidu Avenue, Suite 200  
Nevada City, CA 95959

Presorted  
First Class Mail  
US Postage  
PAID  
Boulder, CO  
Permit NO. 94



County of Nevada  
950 Maidu Avenue, Suite 200  
Nevada City, CA 95959

Presorted  
First Class Mail  
US Postage  
PAID  
Boulder, CO  
Permit NO. 94



County of Nevada  
950 Maidu Avenue, Suite 200  
Nevada City, CA 95959

Presorted  
First Class Mail  
US Postage  
PAID  
Boulder, CO  
Permit NO. 94



County of Nevada  
950 Maidu Avenue, Suite 200  
Nevada City, CA 95959

Presorted  
First Class Mail  
US Postage  
PAID  
Boulder, CO  
Permit NO.94

COUNTY OF NEVADA  
STATE OF CALIFORNIA  
BOARD OF SUPERVISORS



Heidi Hall, 1<sup>st</sup> District  
Vice Chair Edward C. Scofield, 2<sup>nd</sup> District  
Dan Miller, 3<sup>rd</sup> District  
Chair Wm. "Hank" Weston, 4<sup>th</sup> District  
Richard Anderson, 5<sup>th</sup> District  
Julie Patterson Hunter,  
Clerk of the Board

May 2017

Dear Nevada County Resident:

Please help us shape the future of Nevada County! You have been selected at random to participate in the 2017 Nevada County Citizen Survey.

Please take a few minutes to fill out the enclosed survey. Your participation in this survey is very important – especially since your household is one of only a small number of households being surveyed. Your feedback will help Nevada County make decisions that affect our community.

**A few things to remember:**

- **Your responses are completely anonymous.**
- In order to hear from a diverse group of residents, the adult 18 years or older in your household who most recently had a birthday should complete this survey.
- **You may return the survey by mail in the enclosed postage-paid envelope, or you can complete the survey online at:**

**<http://bit.ly/2qp1f6g>**

If you have any questions about the survey please call (530) 265-7020.

Thank you for your time and participation!

Sincerely,

Hank Weston  
District 4 Supervisor and Chair

950 Maidu Avenue, Suite 200, Nevada City CA 95959-8617  
phone: 530.265.1480 | fax: 530.265.9836 | toll free: 888.785.1480 | email: [bdofsupervisors@co.nevada.ca.us](mailto:bdofsupervisors@co.nevada.ca.us)  
website: <http://www.mynevadacounty.com/nc/bos>

COUNTY OF NEVADA  
STATE OF CALIFORNIA  
BOARD OF SUPERVISORS



Heidi Hall, 1<sup>st</sup> District  
Vice Chair Edward C. Scofield, 2<sup>nd</sup> District  
Dan Miller, 3<sup>rd</sup> District  
Chair Wm. "Hank" Weston, 4<sup>th</sup> District  
Richard Anderson, 5<sup>th</sup> District  
  
Julie Patterson Hunter,  
Clerk of the Board

June 2017

Dear Nevada County Resident:

Here's a second chance if you haven't already responded to the 2017 Nevada County Citizen Survey! **(If you completed it and sent it back, we thank you for your time and ask you to recycle this survey. Please do not respond twice.)**

Please help us shape the future of Nevada County! You have been selected at random to participate in the 2017 Nevada County Citizen Survey.

Please take a few minutes to fill out the enclosed survey. Your participation in this survey is very important – especially since your household is one of only a small number of households being surveyed. Your feedback will help Nevada County make decisions that affect our community.

**A few things to remember:**

- **Your responses are completely anonymous.**
- In order to hear from a diverse group of residents, the adult 18 years or older in your household who most recently had a birthday should complete this survey.
- **You may return the survey by mail in the enclosed postage-paid envelope, or you can complete the survey online at:**

**<http://bit.ly/2qp1f6g>**

If you have any questions about the survey please call (530) 265-7020.

Thank you for your time and participation!

Sincerely,

Hank Weston  
District 4 Supervisor and Chair

950 Maidu Avenue, Suite 200, Nevada City CA 95959-8617  
phone: 530.265.1480 | fax: 530.265.9836 | toll free: 888.785.1480 | email: [bdofsupervisors@co.nevada.ca.us](mailto:bdofsupervisors@co.nevada.ca.us)  
website: <http://www.mynevadacounty.com/nc/bos>

# Nevada County 2017 Citizen Survey

Please complete this questionnaire if you are the adult (age 18 or older) in the household who most recently had a birthday. The adult's year of birth does not matter. Please select the response (by circling the number or checking the box) that most closely represents your opinion for each question. Your responses are anonymous and will be reported in group form only.

**1. Please rate each of the following aspects of quality of life in Nevada County:**

	<i>Excellent</i>	<i>Good</i>	<i>Fair</i>	<i>Poor</i>	<i>Don't know</i>
Nevada County as a place to live.....	1	2	3	4	5
Your neighborhood as a place to live.....	1	2	3	4	5
Nevada County as a place to raise children.....	1	2	3	4	5
Nevada County as a place to work.....	1	2	3	4	5
Nevada County as a place to visit.....	1	2	3	4	5
Nevada County as a place to retire.....	1	2	3	4	5
The overall quality of life in Nevada County.....	1	2	3	4	5

**2. Please rate each of the following characteristics as they relate to Nevada County as a whole:**

	<i>Excellent</i>	<i>Good</i>	<i>Fair</i>	<i>Poor</i>	<i>Don't know</i>
Overall feeling of safety in Nevada County.....	1	2	3	4	5
Overall ease of getting to the places you usually have to visit.....	1	2	3	4	5
Quality of overall natural environment in Nevada County.....	1	2	3	4	5
Overall "built environment" of Nevada County (including overall design, buildings, parks and transportation systems).....	1	2	3	4	5
Health and wellness opportunities in Nevada County.....	1	2	3	4	5
Overall opportunities for education and enrichment.....	1	2	3	4	5
Overall economic health of Nevada County.....	1	2	3	4	5
Sense of community.....	1	2	3	4	5
Overall image or reputation of Nevada County.....	1	2	3	4	5

**3. Please indicate how likely or unlikely you are to do each of the following:**

	<i>Very likely</i>	<i>Somewhat likely</i>	<i>Somewhat unlikely</i>	<i>Very unlikely</i>	<i>Don't know</i>
Recommend living in Nevada County to someone who asks.....	1	2	3	4	5
Remain in Nevada County for the next five years.....	1	2	3	4	5
Remain in Nevada County for the next 12 months.....	1	2	3	4	5

**4. Please rate how safe or unsafe you feel:**

	<i>Very safe</i>	<i>Somewhat safe</i>	<i>Neither safe nor unsafe</i>	<i>Somewhat unsafe</i>	<i>Very unsafe</i>	<i>Don't know</i>
In your neighborhood during the day.....	1	2	3	4	5	6
In Nevada County's downtown/commercial areas during the day.....	1	2	3	4	5	6
In Nevada County's downtown/commercial areas at night. 1	1	2	3	4	5	6

**5. Please rate each of the following characteristics as they relate to Nevada County as a whole:**

	<i>Excellent</i>	<i>Good</i>	<i>Fair</i>	<i>Poor</i>	<i>Don't know</i>
Traffic flow on major streets.....	1	2	3	4	5
Ease of travel by car in Nevada County.....	1	2	3	4	5
Ease of travel by public transportation in Nevada County.....	1	2	3	4	5
Ease of travel by bicycle in Nevada County.....	1	2	3	4	5
Ease of walking in Nevada County.....	1	2	3	4	5
Availability of paths and walking trails.....	1	2	3	4	5
Air quality.....	1	2	3	4	5
Public places where people want to spend time.....	1	2	3	4	5
Variety of housing options.....	1	2	3	4	5
Availability of affordable quality housing.....	1	2	3	4	5
Fitness opportunities (including exercise classes and paths or trails, etc.).....	1	2	3	4	5
Recreational opportunities.....	1	2	3	4	5
Availability of affordable quality food.....	1	2	3	4	5
Availability of affordable quality health care.....	1	2	3	4	5
Availability of preventive health services.....	1	2	3	4	5
Availability of affordable quality mental health care.....	1	2	3	4	5
Access to specialty health care (primary doctor, healthcare specialist, dentist, etc.) 1	1	2	3	4	5

**6. Please rate each of the following characteristics as they relate to Nevada County as a whole:**

	<i>Excellent</i>	<i>Good</i>	<i>Fair</i>	<i>Poor</i>	<i>Don't know</i>
Availability of affordable quality child care/preschool .....	1	2	3	4	5
K-12 education .....	1	2	3	4	5
Adult educational opportunities.....	1	2	3	4	5
Opportunities to attend cultural/arts/music activities .....	1	2	3	4	5
Opportunities to participate in religious or spiritual events and activities .....	1	2	3	4	5
Employment opportunities .....	1	2	3	4	5
Shopping opportunities.....	1	2	3	4	5
Cost of living in Nevada County.....	1	2	3	4	5
Overall quality of business and service establishments in Nevada County .....	1	2	3	4	5
Opportunities to participate in social events and activities .....	1	2	3	4	5
Opportunities to volunteer.....	1	2	3	4	5
Opportunities to participate in community matters .....	1	2	3	4	5
Openness and acceptance of the community toward people of diverse backgrounds .....	1	2	3	4	5
Neighborliness of residents in Nevada County .....	1	2	3	4	5
Access to food and beverage establishments (wineries, breweries, and restaurants) .	1	2	3	4	5
Access to organic food .....	1	2	3	4	5

**7. Please indicate whether or not you have done each of the following in the last 12 months.**

	<i>No</i>	<i>Yes</i>
Made efforts to conserve water .....	1	2
Made efforts to make your home more energy efficient .....	1	2
Observed a code violation or other hazard in Nevada County (weeds, abandoned buildings or cars, etc.) .....	1	2
Household member was a victim of a crime in Nevada County .....	1	2
Reported a crime to the Sheriff in Nevada County .....	1	2
Stocked supplies in preparation for an emergency .....	1	2
Campaigned or advocated for an issue, cause or candidate .....	1	2
Contacted Nevada County (in-person, phone, email or web) for help or information .....	1	2
Contacted Nevada County elected officials (in-person, phone, email or web) to express your opinion .....	1	2
Utilized the recycling facility at the McCourtney Road Transfer Station .....	1	2
Visited the County website MyNevadaCounty.com.....	1	2
Visited the County tourism website GoNevadaCounty.com.....	1	2
Visited County social media sites (Facebook, Twitter, etc.) for information on services.....	1	2
Accessed County services online (pay taxes, book community rooms, building permits, etc.).....	1	2

**8. In the last 12 months, about how many times, if at all, have you or other household members done each of the following in Nevada County?**

	<i>2 times a week or more</i>	<i>2-4 times a month</i>	<i>Once a month or less</i>	<i>Not at all</i>
Visited a community park.....	1	2	3	4
Used Nevada County public libraries or their services .....	1	2	3	4
Participated in religious or spiritual activities in Nevada County .....	1	2	3	4
Attended a County-sponsored event.....	1	2	3	4
Used bus transportation instead of driving .....	1	2	3	4
Carpooled with other adults or children instead of driving alone.....	1	2	3	4
Walked or biked instead of driving .....	1	2	3	4
Volunteered your time to some group/activity in Nevada County .....	1	2	3	4
Participated in a club .....	1	2	3	4
Talked to or visited with your immediate neighbors .....	1	2	3	4
Done a favor for a neighbor.....	1	2	3	4
Utilized a recycling facility other than the transfer station to recycle: batteries, light bulbs, commingle [paper/plastic], mattresses, beverage containers, etc. ....	1	2	3	4

**9. Thinking about local public meetings (of local elected officials like County Board of Supervisors, advisory boards, town halls, HOA, neighborhood watch, etc.), in the last 12 months, about how many times, if at all, have you or other household members attended or watched a local public meeting?**

	<i>2 times a week or more</i>	<i>2-4 times a month</i>	<i>Once a month or less</i>	<i>Not at all</i>
<u>Attended</u> a local public meeting .....	1	2	3	4
<u>Watched</u> (online or on television) a local public meeting.....	1	2	3	4



# Nevada County 2017 Citizen Survey

## 10. Please rate the quality of each of the following services in Nevada County:

	<i>Excellent</i>	<i>Good</i>	<i>Fair</i>	<i>Poor</i>	<i>Don't know</i>
Sheriff services .....	1	2	3	4	5
Crime prevention.....	1	2	3	4	5
Fire prevention and education.....	1	2	3	4	5
Traffic enforcement .....	1	2	3	4	5
Street repair .....	1	2	3	4	5
Street cleaning .....	1	2	3	4	5
Snow removal .....	1	2	3	4	5
Bus or transit services.....	1	2	3	4	5
Garbage collection.....	1	2	3	4	5
Recycling .....	1	2	3	4	5
Yard waste pick-up .....	1	2	3	4	5
Storm drainage .....	1	2	3	4	5
Sewer services .....	1	2	3	4	5
Recreation programs or classes.....	1	2	3	4	5
Recreation centers or facilities .....	1	2	3	4	5
Land use, planning and zoning.....	1	2	3	4	5
Code enforcement (weeds, abandoned buildings or cars, etc.) .....	1	2	3	4	5
Animal control.....	1	2	3	4	5
Economic development .....	1	2	3	4	5
Health services .....	1	2	3	4	5
Public library services .....	1	2	3	4	5
Public information services .....	1	2	3	4	5
Emergency preparedness (services that prepare the community for natural disasters or other emergency situations).....	1	2	3	4	5
Preservation of natural areas such as open space, farmlands and greenbelts.....	1	2	3	4	5
Overall customer service by Nevada County employees (receptionists, planners, Sheriff, etc.).....	1	2	3	4	5

## 11. Overall, how would you rate the quality of the services provided by each of the following?

	<i>Excellent</i>	<i>Good</i>	<i>Fair</i>	<i>Poor</i>	<i>Don't know</i>
Nevada County.....	1	2	3	4	5
The Federal Government .....	1	2	3	4	5
The State Government .....	1	2	3	4	5

## 12. Please rate the following categories of Nevada County government performance:

	<i>Excellent</i>	<i>Good</i>	<i>Fair</i>	<i>Poor</i>	<i>Don't know</i>
The value of services for the taxes paid to Nevada County .....	1	2	3	4	5
The overall direction that Nevada County is taking.....	1	2	3	4	5
The job Nevada County government does at welcoming citizen involvement..	1	2	3	4	5
Overall confidence in Nevada County government .....	1	2	3	4	5
Generally acting in the best interest of the community .....	1	2	3	4	5
Treating all residents fairly .....	1	2	3	4	5
Being transparent.....	1	2	3	4	5

## 13. Please rate how important, if at all, you think it is for the Nevada County community to focus on each of the following in the coming two years:

	<i>Essential</i>	<i>Very important</i>	<i>Somewhat important</i>	<i>Not at all important</i>
Overall feeling of safety in Nevada County .....	1	2	3	4
Overall ease of getting to the places you usually have to visit.....	1	2	3	4
Quality of overall natural environment in Nevada County .....	1	2	3	4
Overall "built environment" of Nevada County (including overall design, buildings, parks and transportation systems) .....	1	2	3	4
Health and wellness opportunities in Nevada County.....	1	2	3	4
Overall opportunities for education and enrichment.....	1	2	3	4
Overall economic health of Nevada County .....	1	2	3	4
Sense of community.....	1	2	3	4

**14. To what extent do you support or oppose each of the following types of retail sales of cannabis in Nevada County?**

	<i>Strongly support</i>	<i>Somewhat support</i>	<i>Somewhat oppose</i>	<i>Strongly oppose</i>	<i>Don't know</i>
Recreational cannabis.....	1	2	3	4	5
Medical cannabis .....	1	2	3	4	5

**15. To what extent would you support or oppose each of the following in the future in Nevada County?**

	<i>Strongly support</i>	<i>Somewhat support</i>	<i>Somewhat oppose</i>	<i>Strongly oppose</i>	<i>Don't know</i>
Retail cannabis stores.....	1	2	3	4	5
Indoor cannabis cultivation facilities.....	1	2	3	4	5
Outdoor cannabis cultivation .....	1	2	3	4	5
Commercial and product manufacturing facilities for cannabis .....	1	2	3	4	5
Regulation of cannabis advertising .....	1	2	3	4	5
Cannabis being an economic driver of Nevada County .....	1	2	3	4	5

**16. To what extent do you support or oppose the following locations for retail cannabis facilities within Nevada County?**

	<i>Strongly support</i>	<i>Somewhat support</i>	<i>Somewhat oppose</i>	<i>Strongly oppose</i>	<i>Don't know</i>
In the downtown areas.....	1	2	3	4	5
In any retail or business center .....	1	2	3	4	5
In any agricultural area.....	1	2	3	4	5
In any residential neighborhood.....	1	2	3	4	5
Within 1,000 ft. distance from other cannabis facilities and/or stores .....	1	2	3	4	5
Within 1,000 ft. distance from any community gathering areas (e.g., churches, schools, parks, daycares, etc.) .....	1	2	3	4	5

**17. To what extent, if at all, are you concerned about each of the following aspects of cannabis in Nevada County?**

	<i>Very concerned</i>	<i>Somewhat concerned</i>	<i>Not concerned</i>	<i>Don't know</i>
Increase of crime due to cannabis cultivation .....	1	2	3	4
Decreased access to medical cannabis due to local regulations .....	1	2	3	4
Cannabis odor .....	1	2	3	4
Cannabis-related traffic in neighborhoods.....	1	2	3	4
Cannabis-related garbage accumulation in neighborhoods.....	1	2	3	4
Unpermitted improvements (structures, septic, wells, etc.) .....	1	2	3	4
Increased camping and recreational vehicles related to cannabis cultivation.....	1	2	3	4
Decreased access to recreational cannabis due to local regulations.....	1	2	3	4
Environmental impacts due to cannabis cultivation .....	1	2	3	4
Children's increased exposure to and the normalization of cannabis.....	1	2	3	4
Transient workforce related to cannabis cultivation .....	1	2	3	4
Fire risk from in-home cannabis cultivation or distillation .....	1	2	3	4

**18. Regarding issues related to fire danger in your neighborhood, please rate how concerned, if at all, you are with each of the following:**

	<i>Very concerned</i>	<i>Somewhat concerned</i>	<i>Not concerned</i>	<i>Don't know</i>
Neighbors maintaining the 100 foot clearance around homes and roads for Defensible Space ....	1	2	3	4
Forest health (bark beetles, forest management, etc.) .....	1	2	3	4
Ease of yard waste removal.....	1	2	3	4
Large tree removal.....	1	2	3	4
Suppression response (location/number of Fire Stations, emergency response time).....	1	2	3	4
Illegal encampments .....	1	2	3	4
Illegal campfires .....	1	2	3	4
Obtaining or renewing homeowner insurance with wildfire protection .....	1	2	3	4

**19. To what degree, if at all, do the following barriers exist for wildfire safety on your property?**

	<i>Definitely a barrier</i>	<i>Sort of a barrier</i>	<i>Not at all a barrier</i>	<i>Don't know</i>
Fiscal barriers to making your property wildfire safe (cost of vegetation management, etc.)... 1	1	2	3	4
Physical barriers to making your property wildfire safe (physical ability, health reasons, etc.).... 1	1	2	3	4
Regulations with local and state agencies (homeowners association, city, etc.)..... 1	1	2	3	4

# Nevada County 2017 Citizen Survey

**20. How much of a source, if any, do you consider each of the following for obtaining information during an emergency?**

	<i>Major source</i>	<i>Minor source</i>	<i>Not a source</i>
Nevada County CodeRED Emergency Mass Notification System .....	1	2	3
Nevada County Office of Emergency Services website (www.MyNevadaCounty.com) .....	1	2	3
County communications via social media (i.e. Facebook or Twitter) .....	1	2	3

**21. To what extent, if at all, are you concerned about each of the following aspects of homelessness in Nevada County?**

	<i>Very concerned</i>	<i>Somewhat concerned</i>	<i>Not concerned</i>	<i>Don't know</i>
Availability of community and government support services .....	1	2	3	4
Accessibility of community and government support services .....	1	2	3	4
Public safety .....	1	2	3	4
Impact on economic development.....	1	2	3	4
Illegal camping.....	1	2	3	4
Loitering/nuisance in business areas .....	1	2	3	4

**22. How do you connect to the Internet at home? (Mark all that apply.)**

- No internet access at home
- DSL provider
- Fixed wireless (Colfax Net, Smarter Broadband)
- Cable (Comcast, Suddenlink)
- Cellular (Verizon, AT&T, other)
- Other
- Satellite (DirectTV, Dish, other)
- Dial-up → see question 23
- Don't know

**23. [IF YOU HAVE DIAL-UP INTERNET] What is preventing you from getting high-speed service (e.g., broadband, DSL)? (Mark all that apply.)**

- Too expensive
- Don't know enough about it
- Can get access somewhere else (e.g., work, school)
- Don't need it
- Not available in my area
- Other

**24. Please rate the quality of your current broadband availability:**

- Excellent
- Good
- Fair
- Poor
- Don't know

**25. Have you visited the Nevada County Airport for any reason in the last 12 months?**

- Yes
- No

**26. How likely or unlikely would you be to visit the Nevada County Airport if:**

	<i>Very likely</i>	<i>Somewhat likely</i>	<i>Somewhat unlikely</i>	<i>Very unlikely</i>	<i>Don't know</i>
There was a restaurant onsite .....	1	2	3	4	5
It had a gathering location (multi-use purpose facility, etc.) .....	1	2	3	4	5
There were other business spaces available (office space for lease, etc.) .....	1	2	3	4	5

**27. What is your impression of the noise generated by the aircraft at the Nevada County Airport?**

- Unnoticeable
- Minor
- Moderate
- Significant
- Unbearable

**28. From each set of statements below, please select the one you lean toward more:**

- a.  My total household income comfortably supports my household  
 My household struggles to get by on my/our total income
- 
- b.  I am employed, and I am satisfied with the number of hours I work  
 I am employed, and I would work more hours if they were available  
 I am unemployed

**29. Please choose the statement that best describes you:**

- I work one job only
- I work more than one job
- I don't work

**30. What is the ONE thing Nevada County should focus on improving most in the next two years?**

**Our last questions are about you and your household. Again, all of your responses to this survey are completely anonymous and will be reported in group form only.**

**D1. How often, if at all, do you do each of the following, considering all of the times you could?**

	<i>Never</i>	<i>Rarely</i>	<i>Sometimes</i>	<i>Usually</i>	<i>Always</i>
Recycle at home .....	1	2	3	4	5
Purchase goods or services from a business located in Nevada County .....	1	2	3	4	5
Eat at least 5 portions of fruits and vegetables a day .....	1	2	3	4	5
Participate in moderate or vigorous physical activity .....	1	2	3	4	5
Read or watch local news (via television, paper, computer, etc.) .....	1	2	3	4	5
Vote in local elections.....	1	2	3	4	5

**D2. Would you say that in general your health is:**

- Excellent       Very good       Good       Fair       Poor

**D3. What impact, if any, do you think the economy will have on your family income in the next 6 months? Do you think the impact will be:**

- Very positive       Somewhat positive       Neutral       Somewhat negative       Very negative

**D4. What is your employment status?**

- Working full time for pay  
 Working part time for pay  
 Unemployed, looking for paid work  
 Unemployed, not looking for paid work  
 Fully retired

**D5. Do you work inside the boundaries of Nevada County?**

- Yes, outside the home  
 Yes, from home  
 No

**D6. How many years have you lived in Nevada County?**

- Less than 2 years       11-20 years  
 2-5 years       More than 20 years  
 6-10 years

**D7. Which best describes the building you live in?**

- One family house detached from any other houses  
 Building with two or more homes (duplex, townhome, apartment or condominium)  
 Mobile home  
 Other

**D8. Is this house, apartment or mobile home...**

- Rented       Owned

**D9. About how much is your monthly housing cost for the place you live (including rent, mortgage payment, property tax, property insurance and homeowners' association (HOA) fees)?**

- Less than \$300 per month  
 \$300 to \$599 per month  
 \$600 to \$999 per month  
 \$1,000 to \$1,499 per month  
 \$1,500 to \$2,499 per month  
 \$2,500 or more per month

**D10. Do any children 17 or under live in your household?**

- No       Yes

**D11. Are you or any other members of your household aged 65 or older?**

- No       Yes

**D12. How much do you anticipate your household's total income before taxes will be for the current year? (Please include in your total income money from all sources for all persons living in your household.)**

- Less than \$25,000  
 \$25,000 to \$49,999  
 \$50,000 to \$99,999  
 \$100,000 to \$149,999  
 \$150,000 or more

**Please respond to both questions D13 and D14:**

**D13. Are you Spanish, Hispanic or Latino?**

- No, not Spanish, Hispanic or Latino  
 Yes, I consider myself to be Spanish, Hispanic or Latino

**D14. What is your race? (Mark one or more races to indicate what race you consider yourself to be.)**

- American Indian or Alaskan Native  
 Asian, Asian Indian or Pacific Islander  
 Black or African American  
 White  
 Other

**D15. In which category is your age?**

- 18-24 years       55-64 years  
 25-34 years       65-74 years  
 35-44 years       75 years or older  
 45-54 years

**D16. What is your sex?**

- Female       Male

**D17. Do you consider a cell phone or land line your primary telephone number?**

- Cell       Land line       Both

**Thank you for completing this survey. Please return the completed survey in the postage-paid envelope to: National Research Center, Inc., PO Box 549, Belle Mead, NJ 08502**