



**Brunswick Industrial Site**

East Bennett Rd

Grass Valley, CA 95945

Inquiry Number: 5940744.8

January 23, 2020

## The EDR Aerial Photo Decade Package



6 Armstrong Road, 4th floor  
Shelton, CT 06484  
Toll Free: 800.352.0050  
[www.edrnet.com](http://www.edrnet.com)

# EDR Aerial Photo Decade Package

01/23/20

**Site Name:**

Brunswick Industrial Site  
East Bennett Rd  
Grass Valley, CA 95945  
EDR Inquiry # 5940744.8

**Client Name:**

Holdrege & Kull Consultants  
792 Searls Avenue  
Nevada City, CA 95959  
Contact: Julie Turnross



Environmental Data Resources, Inc. (EDR) Aerial Photo Decade Package is a screening tool designed to assist environmental professionals in evaluating potential liability on a target property resulting from past activities. EDR's professional researchers provide digitally reproduced historical aerial photographs, and when available, provide one photo per decade.

**Search Results:**

<u>Year</u>	<u>Scale</u>	<u>Details</u>	<u>Source</u>
2016	1"=625'	Flight Year: 2016	USDA/NAIP
2012	1"=625'	Flight Year: 2012	USDA/NAIP
2009	1"=625'	Flight Year: 2009	USDA/NAIP
2006	1"=625'	Flight Year: 2006	USDA/NAIP
1998	1"=625'	Acquisition Date: August 16, 1998	USGS/DOQQ
1987	1"=625'	Flight Date: January 01, 1987	USGS
1984	1"=625'	Flight Date: June 29, 1984	USDA
1975	1"=625'	Flight Date: August 25, 1975	USGS
1973	1"=625'	Flight Date: June 03, 1973	USGS
1963	1"=625'	Flight Date: July 28, 1963	USDA
1962	1"=625'	Flight Date: January 01, 1962	USDA
1952	1"=625'	Flight Date: August 08, 1952	USDA
1947	1"=625'	Flight Date: February 01, 1947	USGS
1939	1"=625'	Flight Date: June 17, 1939	USDA

**When delivered electronically by EDR, the aerial photo images included with this report are for ONE TIME USE ONLY. Further reproduction of these aerial photo images is prohibited without permission from EDR. For more information contact your EDR Account Executive.**

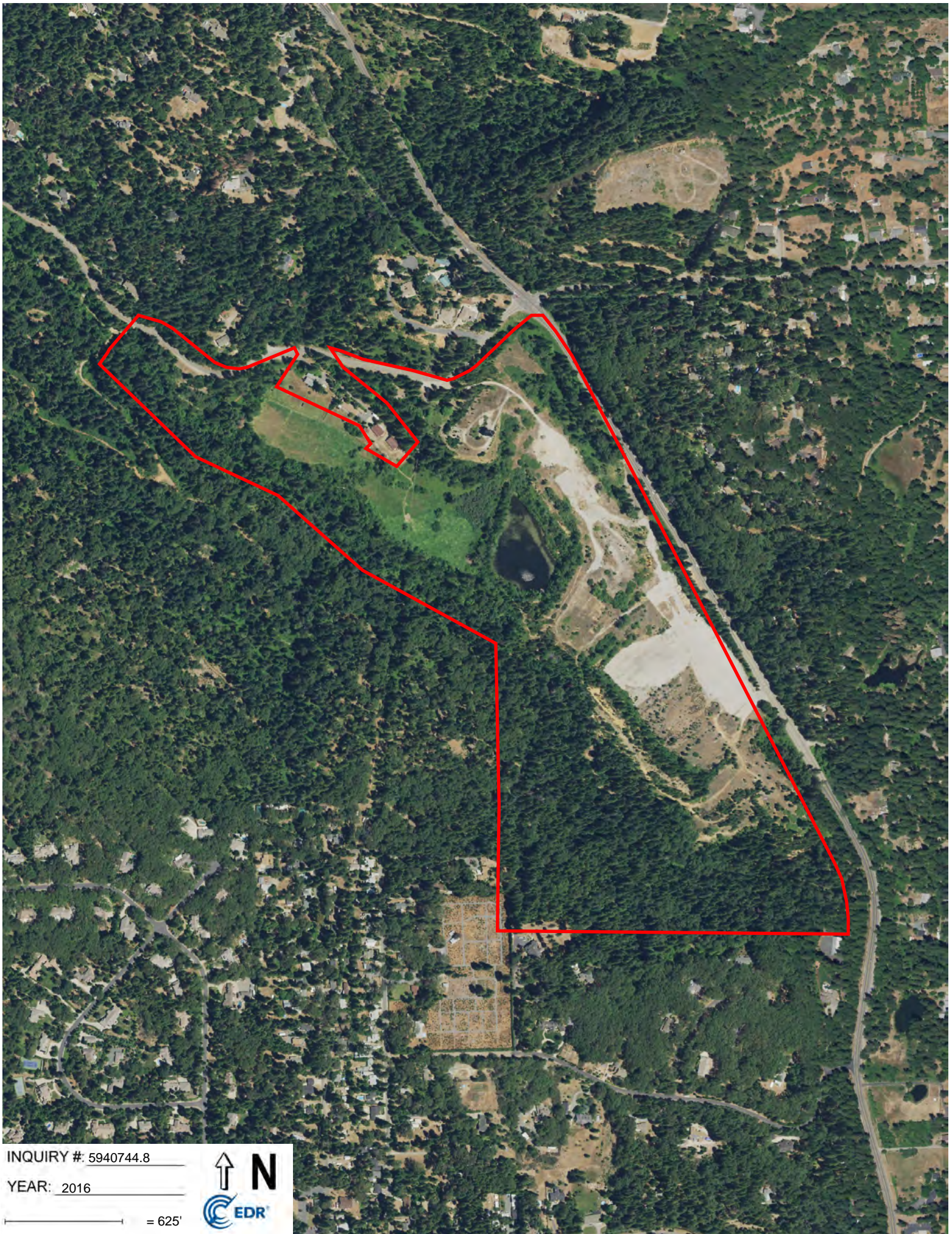
**Disclaimer - Copyright and Trademark Notice**

This Report contains certain information obtained from a variety of public and other sources reasonably available to Environmental Data Resources, Inc. It cannot be concluded from this Report that coverage information for the target and surrounding properties does not exist from other sources. NO WARRANTY EXPRESSED OR IMPLIED, IS MADE WHATSOEVER IN CONNECTION WITH THIS REPORT. ENVIRONMENTAL DATA RESOURCES, INC. SPECIFICALLY DISCLAIMS THE MAKING OF ANY SUCH WARRANTIES, INCLUDING WITHOUT LIMITATION, MERCHANTABILITY OR FITNESS FOR A PARTICULAR USE OR PURPOSE. ALL RISK IS ASSUMED BY THE USER. IN NO EVENT SHALL ENVIRONMENTAL DATA RESOURCES, INC. BE LIABLE TO ANYONE, WHETHER ARISING OUT OF ERRORS OR OMISSIONS, NEGLIGENCE, ACCIDENT OR ANY OTHER CAUSE, FOR ANY LOSS OF DAMAGE, INCLUDING, WITHOUT LIMITATION, SPECIAL, INCIDENTAL, CONSEQUENTIAL, OR EXEMPLARY DAMAGES. ANY LIABILITY ON THE PART OF ENVIRONMENTAL DATA RESOURCES, INC. IS STRICTLY LIMITED TO A REFUND OF THE AMOUNT PAID FOR THIS REPORT. Purchaser accepts this Report "AS IS". Any analyses, estimates, ratings, environmental risk levels or risk codes provided in this Report are provided for illustrative purposes only, and are not intended to provide, nor should they be interpreted as providing any facts regarding, or prediction or forecast of, any environmental risk for any property. Only a Phase I Environmental Site Assessment performed by an environmental professional can provide information regarding the environmental risk for any property. Additionally, the information provided in this Report is not to be construed as legal advice.

Copyright 2020 by Environmental Data Resources, Inc. All rights reserved. Reproduction in any media or format, in whole or in part, of any report or map of Environmental Data Resources, Inc., or its affiliates, is prohibited without prior written permission.

EDR and its logos (including Sanborn and Sanborn Map) are trademarks of Environmental Data Resources, Inc. or its affiliates. All other trademarks used herein are the property of their respective owners.





INQUIRY #: 5940744.8

YEAR: 2016

— = 625'







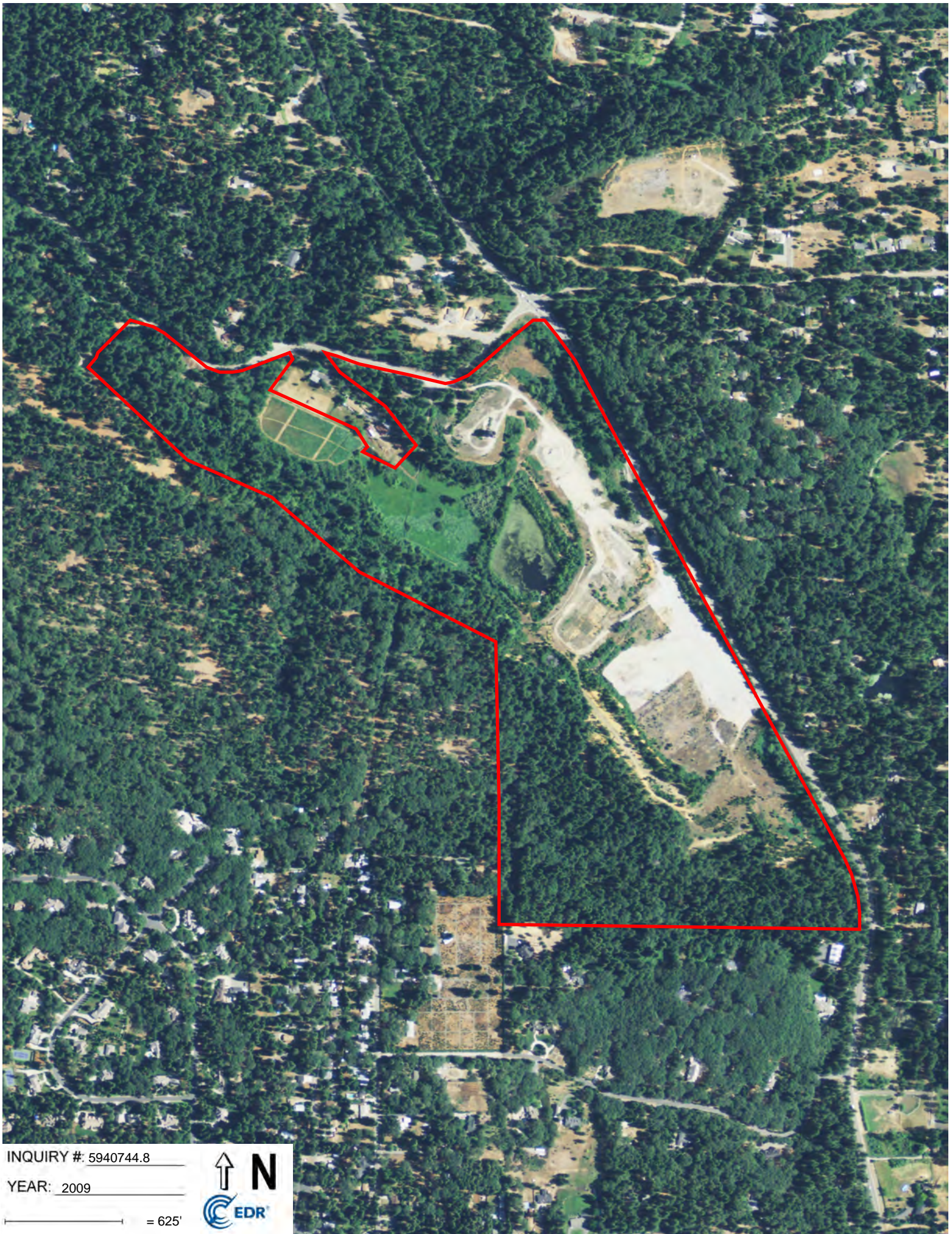
INQUIRY #: 5940744.8

YEAR: 2012

— = 625'







INQUIRY #: 5940744.8

YEAR: 2009

— = 625'







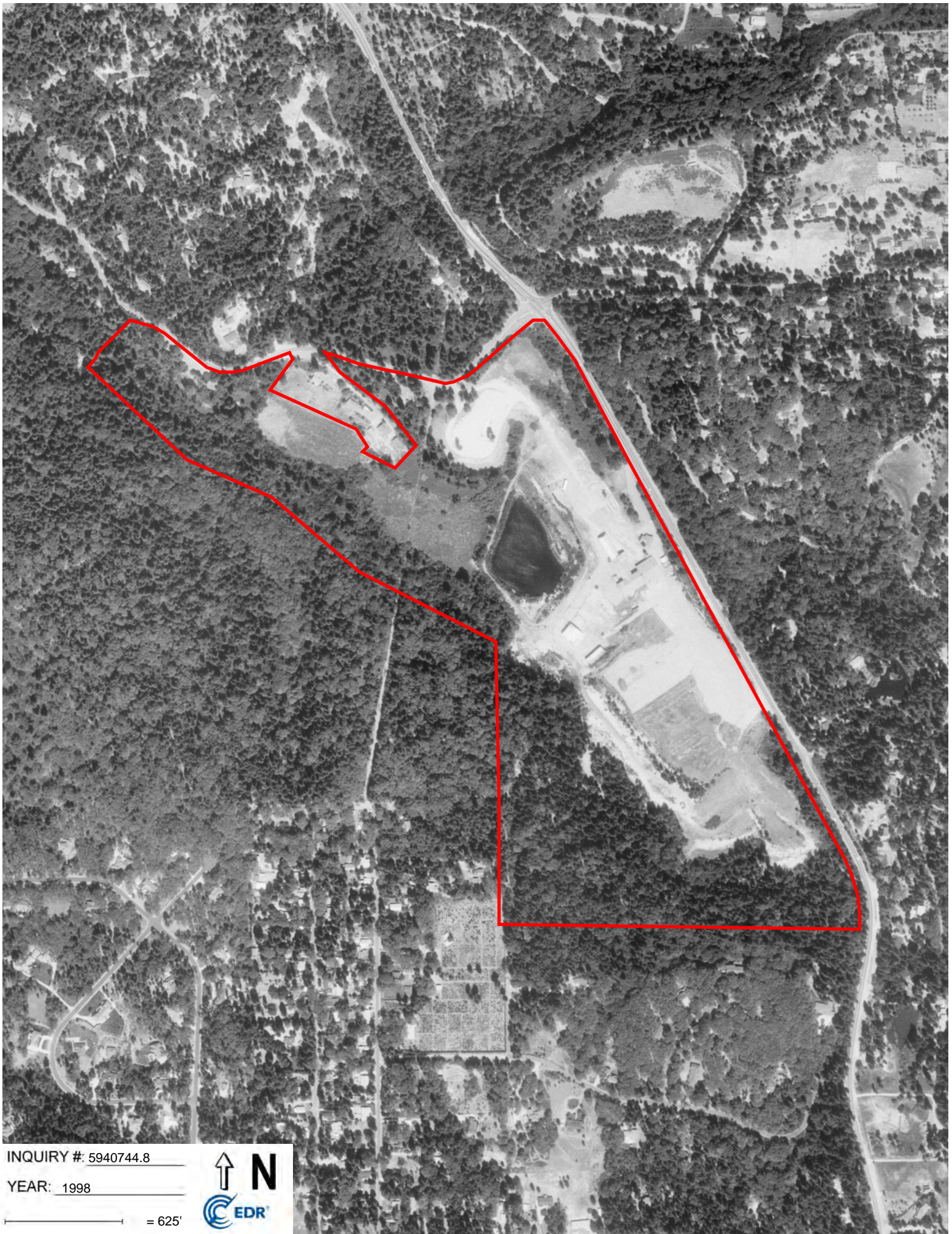
INQUIRY #: 5940744.8

YEAR: 2006

— = 625'







INQUIRY #: 5940744.8

YEAR: 1998

— = 625'







INQUIRY #: 5940744.8

YEAR: 1987

— = 625'



Subject boundary not shown because it exceeds image extent or image is not georeferenced.





INQUIRY #: 5940744.8

YEAR: 1984

— = 625'







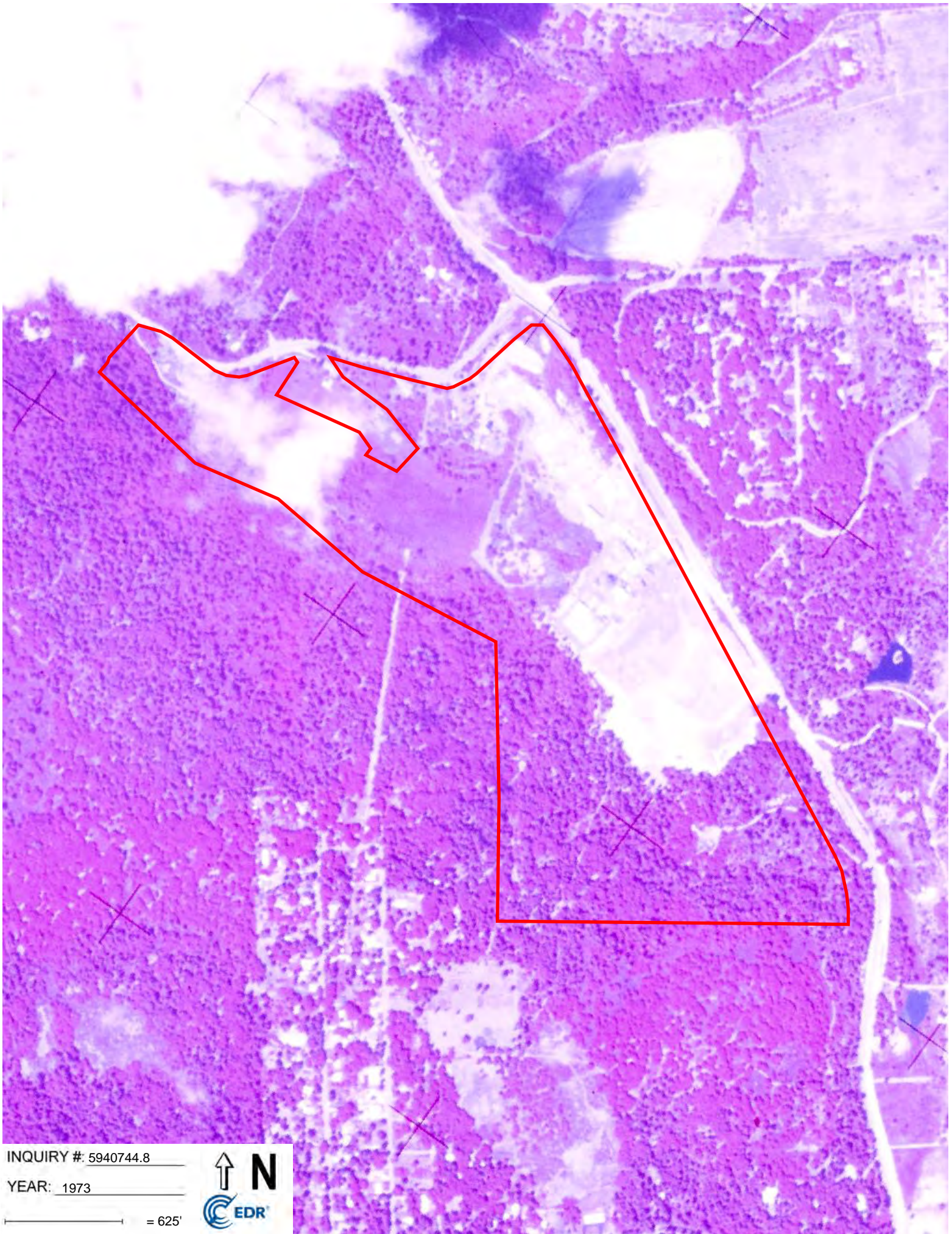
INQUIRY #: 5940744.8

YEAR: 1975

— = 625'







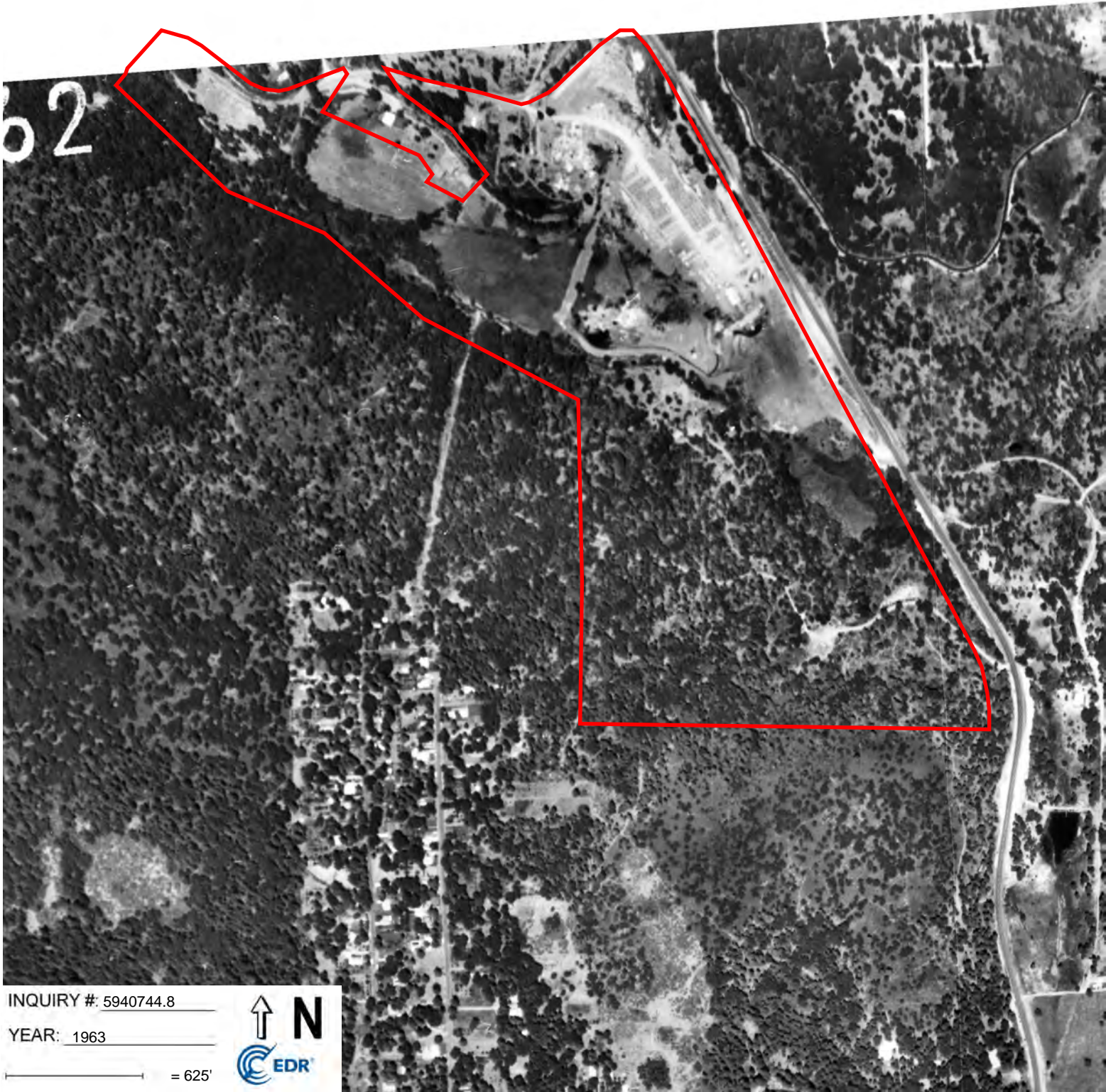
INQUIRY #: 5940744.8

YEAR: 1973

— = 625'







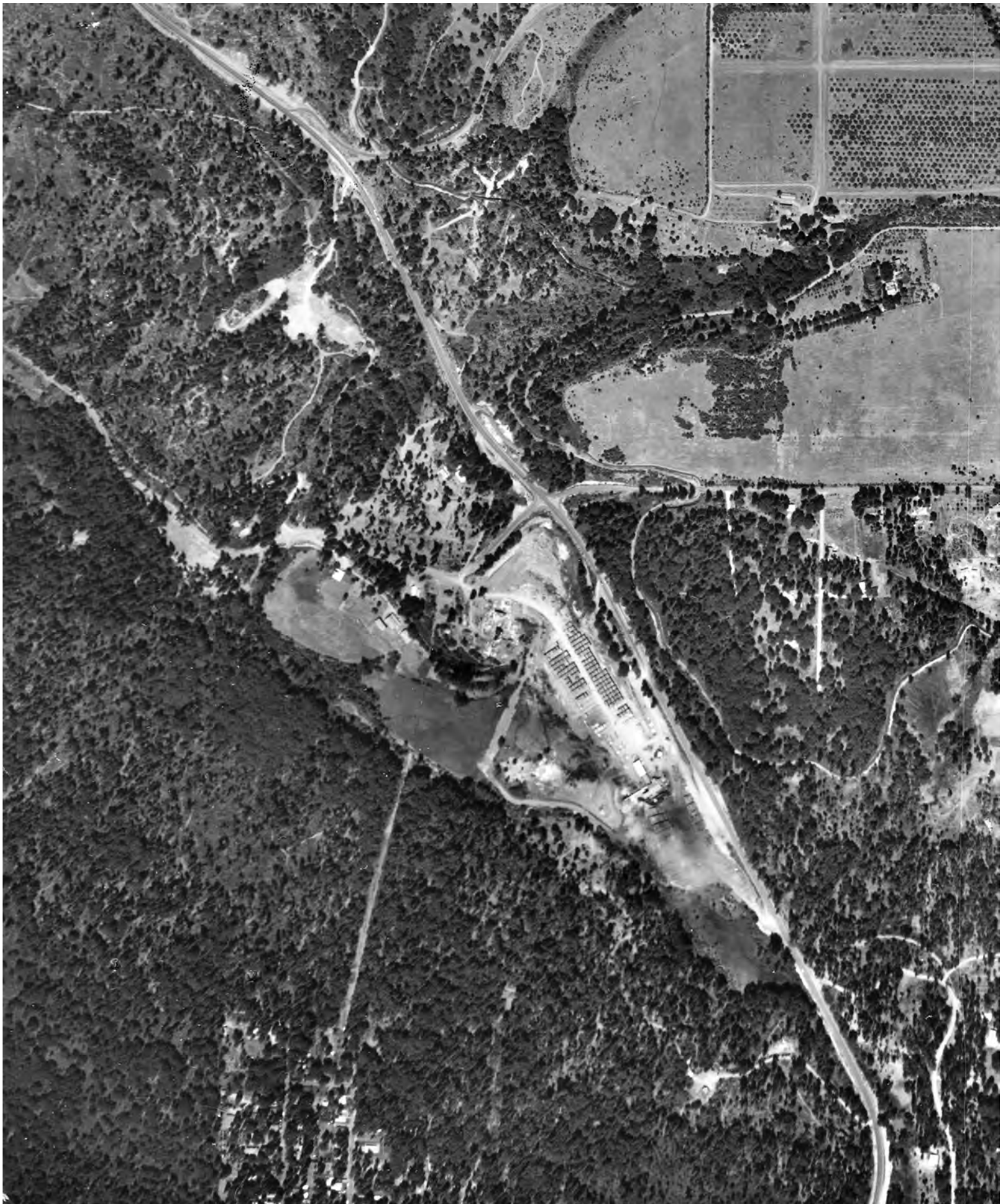
INQUIRY #: 5940744.8

YEAR: 1963

— = 625'







INQUIRY #: 5940744.8

YEAR: 1962

— = 625'



Subject boundary not shown because it exceeds image extent or image is not georeferenced.





INQUIRY #: 5940744.8

YEAR: 1952

— = 625'



Subject boundary not shown because it exceeds image extent or image is not georeferenced.





INQUIRY #: 5940744.8

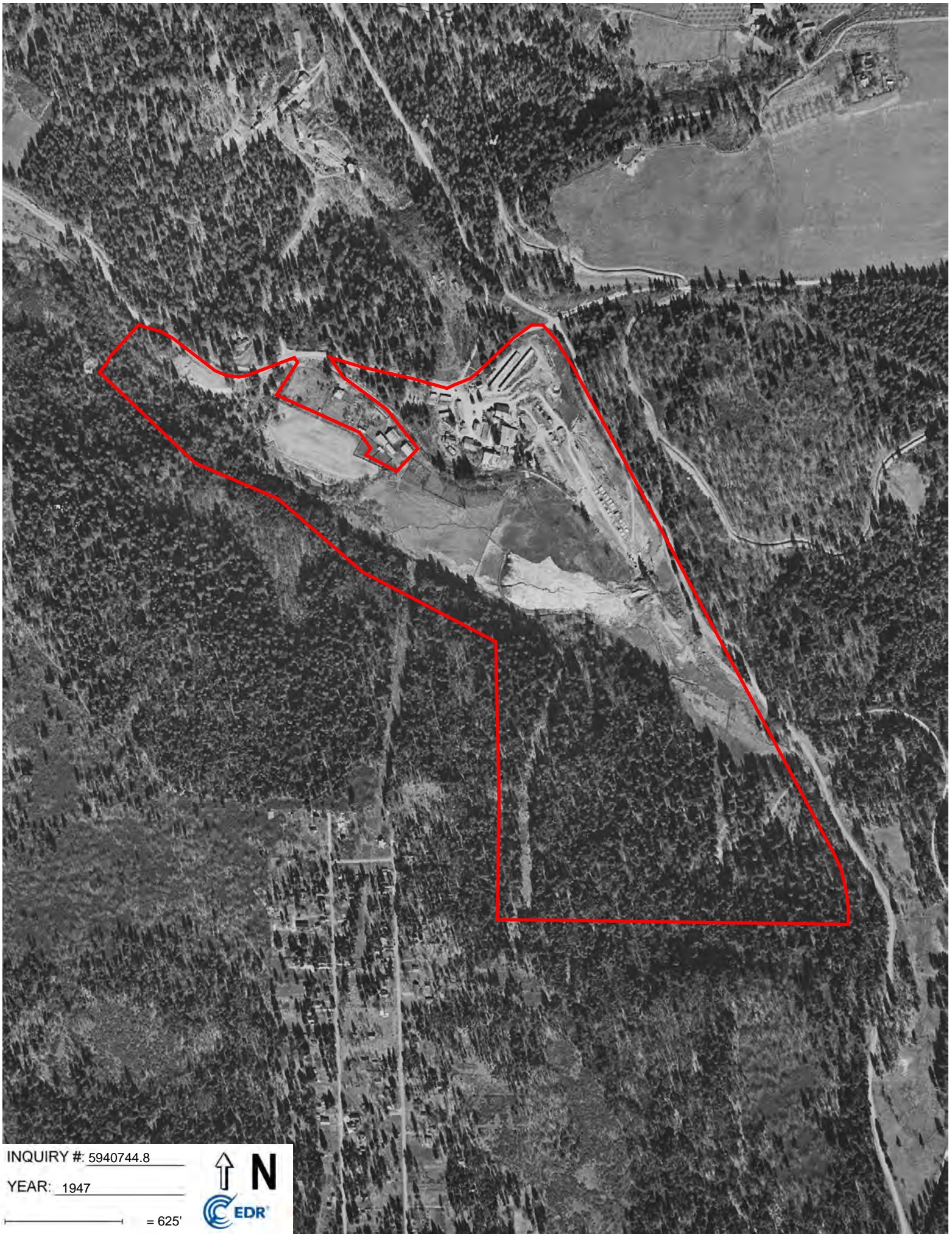
YEAR: 1952

— = 625'



Subject boundary not shown because it exceeds image extent or image is not georeferenced.





INQUIRY #: 5940744.8

YEAR: 1947

— = 625'







INQUIRY #: 5940744.8

YEAR: 1939

— = 625'

