



RESOLUTION No. 24-405

OF THE BOARD OF SUPERVISORS OF THE COUNTY OF NEVADA

RESOLUTION DESIGNATING THE EXCELSIOR DITCH/INDEPENDENCE TRAIL, LOCATED OFF STATE ROUTE 49, NEVADA CITY, CA 95959 AT THE INDEPENDENCE TRAIL HEAD AT AND AROUND THE SOUTH YUBA RIVER STATE PARK AS NEVADA COUNTY HISTORICAL LANDMARK NEV 24- 05

WHEREAS, the Nevada County Historical Landmarks Commission (NCHLC) was established in 1969 to promote the general welfare of Nevada County and its citizens through official recognition, recording, marking, preserving, and promoting the historical resources of Nevada County; and

WHEREAS, the NCHLC has since sustained an active program of cataloging and recommending for designation historical sites and structures throughout Nevada County; and

WHEREAS, the NCHLC accepts applications, processes, and verifies applications for proposed historical landmark designation, and recommends said landmark designations for approval by the Nevada County Board of Supervisors; and

WHEREAS, the Board of Supervisors supports the promotion of the public health, safety, and general welfare by providing for the identification, protection, enhancement, perpetuation, and use of improvements, buildings, structures, signs, objects, features, sites, places, districts, and areas within the County that reflect special elements of the County's architectural, artistic, cultural, engineering, aesthetic, historical, political, social, and other heritage, by allowing their registration as Nevada County Historical Landmarks for the following reasons:

1. Safeguarding Nevada County's heritage as embodied and reflected in the Excelsior Ditch/Independence Trail, located off State Route 49, Nevada City, CA 95959 at the Independence Trail Head at and around the South Yuba River State Park and its influence on Nevada County's cultural and social history, and commemorating the valuable role it played in this community; and
2. Encouraging public knowledge, understanding, and appreciation of Nevada County's history as reflected in its heritage; and
3. Fostering civic and neighborhood pride and a sense of identity based upon the recognition and use of cultural resources; and
4. Preserving diverse and harmonious architectural styles and design innovations; and
5. Enhancing property values to increase economic and financial benefits to Nevada County and its inhabitants by preserving and promoting historical buildings; and
6. Protecting and enhancing Nevada County's attraction to tourists and visitors, thereby stimulating business and industry; and

7. Identifying as early as possible, and resolving, conflicts between the preservation of cultural resources and alternative land uses in a section of Nevada County that may see future population growth; and

WHEREAS, NCHLC sponsored the application and received consent and authorization from the State of California Department of Parks and Recreation District Superintendent Robert Griffith on December 14, 2023 requesting that the Excelsior Ditch/Independence Trail, located off State Route 49, Nevada City, CA 95959 at the Independence Trail Head at and around the South Yuba River State Park be designated as a Nevada County Historical Landmark; and

WHEREAS, at its January 24, 2024 meeting, the NCHLC verified and unanimously approved the application and now recommends that the Board of Supervisors designate the property as a Nevada County Historical Landmark.

NOW, THEREFORE, BE IT RESOLVED that the Board of Supervisors of the County of Nevada hereby accepts the NCHLC's recommendation and designates the Excelsior Ditch/Independence Trail, located off State Route 49, Nevada City, CA 95959 at the Independence Trail Head at and around the South Yuba River State Park, as Nevada County Historical Landmark 24-05.

BE IT FURTHER RESOLVED that the Clerk of the Board is hereby directed to record a certified copy of this Resolution with the Office of the Nevada County Clerk-Recorder within ten (10) days after the adoption hereof.

PASSED AND ADOPTED by the Board of Supervisors of the County of Nevada at a regular meeting of said Board, held on the 9th day of July 2024, by the following vote of said Board:

Ayes: Supervisors Heidi Hall, Edward C. Scofield, Lisa Swarthout, Susan Hoek, and Hardy Bullock.

Noes: None.

Absent: None.


Abstain: None.

Recuse: None.

ATTEST:

TINE MATHIASSEN
Chief Deputy Clerk of the Board of Supervisors

By: 


Hardy Bullock, Chair

RECORDING REQUESTED BY:

&

RETURN TO:

Board of Supervisors
County of Nevada
950 Maidu Avenue, Suite 200
Nevada City CA 95959-8617

Nevada County Recorder

Natalie Adona

Document#: 20240014463

Tuesday September 10 2024, at 08:54:06 AM

Paid: \$0.00 AM

DOCUMENT TITLE

COPY

NEVADA COUNTY BOARD OF SUPERVISORS
RESOLUTION NO. 24-405

RESOLUTION DESIGNATING THE EXCELSIOR DITCH/INDEPENDENCE TRAIL, LOCATED
OFF STATE ROUTE 49, NEVADA CITY, CA 95959 AT THE INDEPENDENCE TRAIL HEAD
AT AND AROUND THE SOUTH YUBA RIVER STATE PARK, AS NEVADA COUNTY
HISTORICAL LANDMARK NEV 24-05.

THIS PAGE ADDED TO PROVIDE ADEQUATE SPACE FOR RECORDING INFORMATION
(Govt. Code 27361.6)
Additional Recording Fee Applies



RESOLUTION No. 24-405

OF THE BOARD OF SUPERVISORS OF THE COUNTY OF NEVADA

RESOLUTION DESIGNATING THE EXCELSIOR DITCH/INDEPENDENCE TRAIL, LOCATED OFF STATE ROUTE 49, NEVADA CITY, CA 95959 AT THE INDEPENDENCE TRAIL HEAD AT AND AROUND THE SOUTH YUBA RIVER STATE PARK AS NEVADA COUNTY HISTORICAL LANDMARK NEV 24- 05

WHEREAS, the Nevada County Historical Landmarks Commission (NCHLC) was established in 1969 to promote the general welfare of Nevada County and its citizens through official recognition, recording, marking, preserving, and promoting the historical resources of Nevada County; and

WHEREAS, the NCHLC has since sustained an active program of cataloging and recommending for designation historical sites and structures throughout Nevada County; and

WHEREAS, the NCHLC accepts applications, processes, and verifies applications for proposed historical landmark designation, and recommends said landmark designations for approval by the Nevada County Board of Supervisors; and

WHEREAS, the Board of Supervisors supports the promotion of the public health, safety, and general welfare by providing for the identification, protection, enhancement, perpetuation, and use of improvements, buildings, structures, signs, objects, features, sites, places, districts, and areas within the County that reflect special elements of the County's architectural, artistic, cultural, engineering, aesthetic, historical, political, social, and other heritage, by allowing their registration as Nevada County Historical Landmarks for the following reasons:

1. Safeguarding Nevada County's heritage as embodied and reflected in the Excelsior Ditch/Independence Trail, located off State Route 49, Nevada City, CA 95959 at the Independence Trail Head at and around the South Yuba River State Park and its influence on Nevada County's cultural and social history, and commemorating the valuable role it played in this community; and
2. Encouraging public knowledge, understanding, and appreciation of Nevada County's history as reflected in its heritage; and
3. Fostering civic and neighborhood pride and a sense of identity based upon the recognition and use of cultural resources; and
4. Preserving diverse and harmonious architectural styles and design innovations; and
5. Enhancing property values to increase economic and financial benefits to Nevada County and its inhabitants by preserving and promoting historical buildings; and
6. Protecting and enhancing Nevada County's attraction to tourists and visitors, thereby stimulating business and industry; and

7. Identifying as early as possible, and resolving, conflicts between the preservation of cultural resources and alternative land uses in a section of Nevada County that may see future population growth; and

WHEREAS, NCHLC sponsored the application and received consent and authorization from the State of California Department of Parks and Recreation District Superintendent Robert Griffith on December 14, 2023 requesting that the Excelsior Ditch/Independence Trail, located off State Route 49, Nevada City, CA 95959 at the Independence Trail Head at and around the South Yuba River State Park be designated as a Nevada County Historical Landmark; and

WHEREAS, at its January 24, 2024 meeting, the NCHLC verified and unanimously approved the application and now recommends that the Board of Supervisors designate the property as a Nevada County Historical Landmark.

NOW, THEREFORE, BE IT RESOLVED that the Board of Supervisors of the County of Nevada hereby accepts the NCHLC's recommendation and designates the Excelsior Ditch/Independence Trail, located off State Route 49, Nevada City, CA 95959 at the Independence Trail Head at and around the South Yuba River State Park, as Nevada County Historical Landmark 24-05.

BE IT FURTHER RESOLVED that the Clerk of the Board is hereby directed to record a certified copy of this Resolution with the Office of the Nevada County Clerk-Recorder within ten (10) days after the adoption hereof.

PASSED AND ADOPTED by the Board of Supervisors of the County of Nevada at a regular meeting of said Board, held on the 9th day of July 2024, by the following vote of said Board:

Ayes: Supervisors Heidi Hall, Edward C. Scofield, Lisa Swarthout, Susan Hoek, and Hardy Bullock.

Noes: None.

Absent: None.

Abstain: None.

Recuse: None.

The foregoing instrument is a correct copy of the original on file in this office.

Resolution 24-05
ATTEST: August 1, 2024

Clerk of the Board

County of Nevada

BY: *Juan Leach*

ATTEST:

TINE MATHIASSEN

Chief Deputy Clerk of the Board of Supervisors

By: *Heidi Hall*

Hardy Bullock
Hardy Bullock, Chair

**Nevada County Historical Landmarks Commission
C/O Clerk of the Board
950 Maidu Ave
PO Box 599002
Nevada City CA 95959-7902
info@nevadacountylandmarks.com
530-264-7230**

24 January 2024

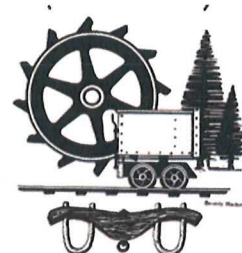
Nevada County Board of Supervisors
950 Maidu Avenue
Nevada City, CA 95959

Honorable Chair and Board Members:

At Friday's meeting, the Nevada County Historical Landmarks Commission voted unanimously to recommend to the Board that the application for landmark designation of the Excelsior Ditch/Independence Trail be approved. The applicant is the Nevada County Historical Landmarks Commission. The property is owned by the State of California Department of Parks & Recreation, which has consented to the application. The landmark is to be designated as Nevada County Historical Landmark NEV 24-02, assuming the pending Church of the Mountains application is approved first.

The Excelsior Ditch was built between 1854 and 1859 by Chinese workers to bring high pressure water for hydraulic mining to western Nevada County from the South Yuba River. The Ditch operated until it was abandoned in 1961. The Ditch was instrumental in the development of gold mining and later farming and ranching in western Nevada county.

After the Excelsior Ditch was abandoned, John Olmsted and his nonprofit Sequoya Challenge converted part of the Ditch to the Independence Trail, the nation's first wheelchair accessible wilderness hiking trail. The Independence Trail opened in 1983. It takes advantage of the Excelsior Ditch's moderate gradient to allow disabled and non-disabled visitors to enjoy the outdoors and learn more about our common history while visiting South Yuba River State Park.



The research and documentation which accompanies the application has been reviewed by several Commissioners for historical accuracy. The application and supporting documentation is enclosed.

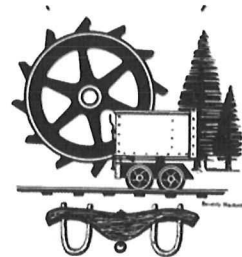
If you approve the application, please forward the resolution and accompanying documents to the County Recorder.

If you have any further questions, do not hesitate to contact me. Thank you in advance for your consideration of this request.

Yours truly,


Bernard Zimmerman, Chair

cc: alexandra.Neeb@parks.ca.gov
Chuck Scimeca



County of Nevada
State of California

Nevada County Historical Landmarks Commission
Application for Registration of Historical Landmark

Name of proposed landmark: **Excelsior Ditch/Independence Trail**

Location: SR 49 at the Independence Trail Head, Nevada County

Name of applicant: Nevada County Historical Landmarks Commission

Address: P.O. Box 1014, Nevada City, California 95959

Home or work phone: [REDACTED] Cell phone: [REDACTED]

Name and address of owner upon whose property proposed landmark
is located, if owner is not applicant: State of California Department of Parks
& Recreation, Sierra District, P.O. Box 266, Tahoma, California 96142

I consent to this application and authorize the placing of a plaque or marker
on site. State of California Department of Parks & Recreation, by
Robert Griffith, District Superintendent

Signed  _____
DocuSigned by:
Rob Griffith
25F30252DF68410...

Date 12/14/2023

Brief history and description of proposed landmark

(attach additional sheets as necessary)

The Excelsior Ditch (later Canal) was built between 1854 and 1859 by Chinese workers to bring high pressure water for hydraulic mining to western Nevada County from the South Yuba River. Initially it ran from about 3 miles upstream of modern Highway 49, 19 miles to Deer Creek near what is now Lake Wildwood. There it connected to the China Ditch which extended 12 more miles to the Smartsville area. The Ditch operated until it was abandoned in 1961.

After the Excelsior Ditch was abandoned, John Olmsted and his nonprofit Sequoia Challenge converted part of the Ditch to the Independence Trail, the nation's first wheelchair accessible wilderness hiking trail. The Independence Trail opened in 1983. It takes advantage of the Excelsior Ditch's 1858 moderate gradient which today allows disabled and non-disabled visitors to enjoy the outdoors and learn more about our common history while visiting South Yuba River State Park.

The Excelsior Ditch as a resource consists of open earth ditch remnants, reconstructed flume remnants, conduit, wooden gates, and stone retaining walls. Most of the ditch remnants are earthen, while some have been lined with gunnite.

Historically significant aspects or properties of proposed landmark

The Excelsior Ditch was instrumental in the development of the gold mining industry in western Nevada county. When hydraulic gold mining declined following the Sawyer decision of 1884, the ditch was instrumental in the development of agriculture and ranching in that part of the county.

The Independence Trail was the nation's first wheelchair accessible wilderness hiking trail.

How will the landmark be protected and maintained

Most of the remaining original wooden flumes of the Excelsior Ditch were destroyed in the 1988 49er Fire. In 2020, the Jones Fire destroyed the reconstructed flumes of the Independence Trail. Ditch remnants are still intact throughout the historic alignment. Presently, the California State Department of Parks and Recreation is committed to the rebuilding of the destroyed and damaged flumes and trestles. It is estimated the cost is approximately 20 million dollars to reconstruct the trail and the flumes. Currently, the County of Nevada County, California State Parks along with the Bear Yuba Land Trust are working to together to create the necessary funding to reopen the western portion of the Independence Trail. 7 million dollars has already been allocated.

Bibliography. Cite or attach available books, records, articles or other materials pertaining to the proposed landmark.

Books and articles:

Scimeca, Chuck, A History of the Excelsior Ditch and Independence Trail, Nevada County California (2023) - Attached

<https://nevadatheatre.com/events/a-wild-independence-the-story-of-nevada-citys-independence-trail/> viewed 21 September 2023

https://en.wikipedia.org/wiki/Independence_Trail viewed 21 September 2023

Historical or civil records: (e.g., ownership, assessments etc.)

The 35-mile long ditch crosses multiple land ownerships, including California State Parks, Bureau of Land Management, Bear Yuba Land Trust, and private owners. The portion of the ditch that constitutes the Independence Trail sits on land owned by California State Parks and the Bear Yuba Land Trust.

In 1986, The California State Department of Parks and Recreation entered a partnership with Sequoia Challenge, to manage the Independence Trail.

That agreement continues to the present time, now in cooperation with the successor of Sequoya Challenge, the Bear Yuba Land Trust. Discussions are underway to transfer the Bear Yuba Land Trust property along the Independence Trail to California State Parks & Recreation ownership, making management of the trail more efficient.

Other: (e.g. photographs, prints or drawings. Please list and attach separately)

Photographs and maps included in attached history prepared by Landmarks Commissioner Chuck Scimeca

Applicant's signature: Nevada County Historical Landmarks Commission by Chuck Scimeca, Commissioner

Signed  Date 12/14/2023
DocuSigned by:
Charles Scimeca
40B612BE85DA162...

=====

This completed form and all related documents shall be sent to the:

Nevada County Historical Landmarks Commission
Attention: Chairman
P. O. Box 1014, Nevada City, Cal. 95959

Attachments and related documents may be submitted in electronic format.

An application must be considered solely on its historic or architectural merits and not for commercial gain, political benefits, or other non-historical reasons.

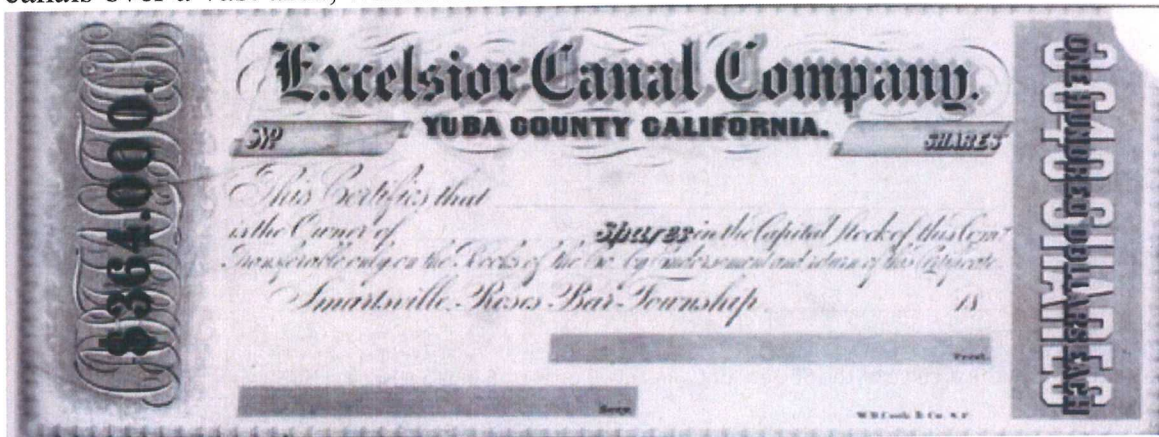
An individual Commissioner can advise and counsel an applicant, but all applications must be considered by the full Commission, meeting in regular session.

The Excelsior Ditch & Independence Trail, Nevada County California

Prepared by Chuck Scimeca, Nevada County Historical Landmarks Commissioner,
Report for Designation as a Nevada County Historical Landmark

September 2023

The Excelsior Ditch (canal)¹ was built between 1854 and 1859 by Chinese workers² to bring high pressure water for hydraulic mining to the Mooney Flat, Sucker Flat, Timbuctoo and the Smartsville area. David L. Bovyer a well-liked businessman from San Francisco,³ conceived of the idea to build the Excelsior Ditch and hired James O'Brian of Smartsville to build the ditch. O'Brian employed a labor force of Chinese workers and completed the work in 1859.⁴ For many years James O'Brian acted as the Superintendent of the Excelsior Ditch Company. During the mid 1850s, the Excelsior Canal Company based in Smartsville grew to a large mega company and beginning in 1861 under the leadership of David Bovyer had consolidated the Union Ditch Company, holding water rights and canals over a vast area, which included the Excelsior Ditch.



¹ Canal and Ditch are used interchangeably throughout this paper. They mean the same thing.

² Kelly, Robert, "Forgotten Giant: The hydraulic Gold Mining Industry in Ca. Pacific Historical Review, April 1954

³ Lindars, Dom, The Ditches of Nevada City, The Untold Story of Nevada City's Gold Mining Ditches, published by Dom Lindars 2023, page 139.

⁴ Smith, Kathleen, Mining in Yuba County for Yuba Roots, Arcadia Publishing 2015, page 59.

“By 1866, a series of sales and consolidation of ditches and water rights ended with the Excelsior Canal Company, controlling all the approximately 150 miles of ditches in the Smartsville and Timbuktu area. Headquartered in Smartsville, the Excelsior company was first organized by a group of miners at the Branch Saloon in Roses Bar in January 1855.”⁵

The Excelsior Canal Company, continued to consolidate most of the smaller ditch companies. This company came to control the water delivery in the entire southern region of the Yuba River basin from Smartsville to the Excelsior Ditch head dam on the South Yuba River, located 3 miles above present-day Highway 49. The other company that controlled much of the upper watershed of the South Yuba River sending water to the hydraulic mines of Nevada City and Grass Valley was the South Yuba River Canal Company based out of Nevada City.⁶

A diversion “wood crib” dam located 3 miles upstream from today’s Highway 49 at the South Yuba River, ⁷ diverted South Yuba River water 19 miles downstream to what is now the dam at Lake Wildwood on Deer Creek. The canal water continued 12⁸ more miles via the China Ditch into the hydraulic mines of the Smartsville mining district. The distance from source to Smartsville is a combined total of 31 miles.⁹ The Excelsior and China Ditch were “five feet wide at the bottom and eight feet on top and is four feet deep. The grade is nine feet to the mile and the ditch discharges 1700 Smartsville miner’s inches.”¹⁰

⁵ This quote is from the archive of the Society of California Pioneers, San Francisco CA, located at the Presidio.

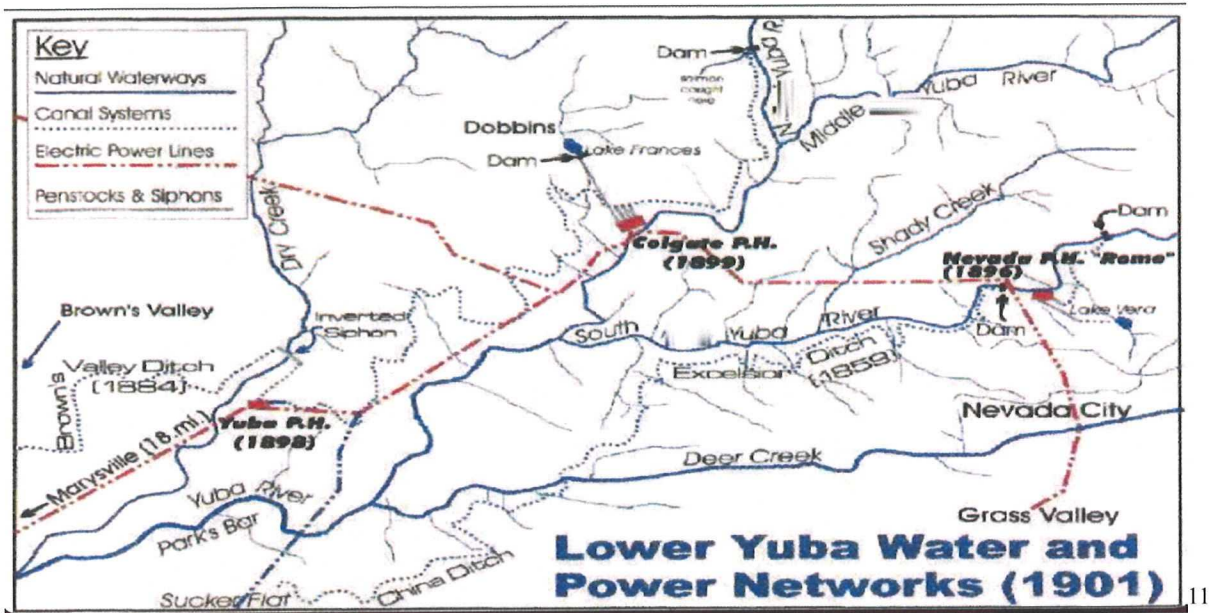
⁶ A State of California Historical Landmark # 832, South Yuba Canal Office, Nevada City, CA.

⁷ A timbered drift bolted head dam secured to bedrock was built in 1878 replacing the original wood crib dam, Elwood Mead (1901).

⁸ Mileage calculated by Dom Lindars by precise mapping program, Nevada County Historical Society Board member and author of The Ditches of Nevada City, self-published 2023.

⁹ Connick & Mead report, 1901

¹⁰ Bowie, Aug. J., Practical Treatise on Hydraulic Mining in California, Van Nostrand 1910, p. 138-140.



On the map above, see the small black "dotted line" starting below Nevada P.H., marked Dam with the black arrow pointing upward.

This is the location of the head dam of the Excelsior Ditch, located about 200 hundred yards downstream from the powerhouse. From the head dam the ditch continues to the bottom of the map, connecting with the China Ditch, ending at Sucker Flat near Smartsville, CA. approximately 31 miles.

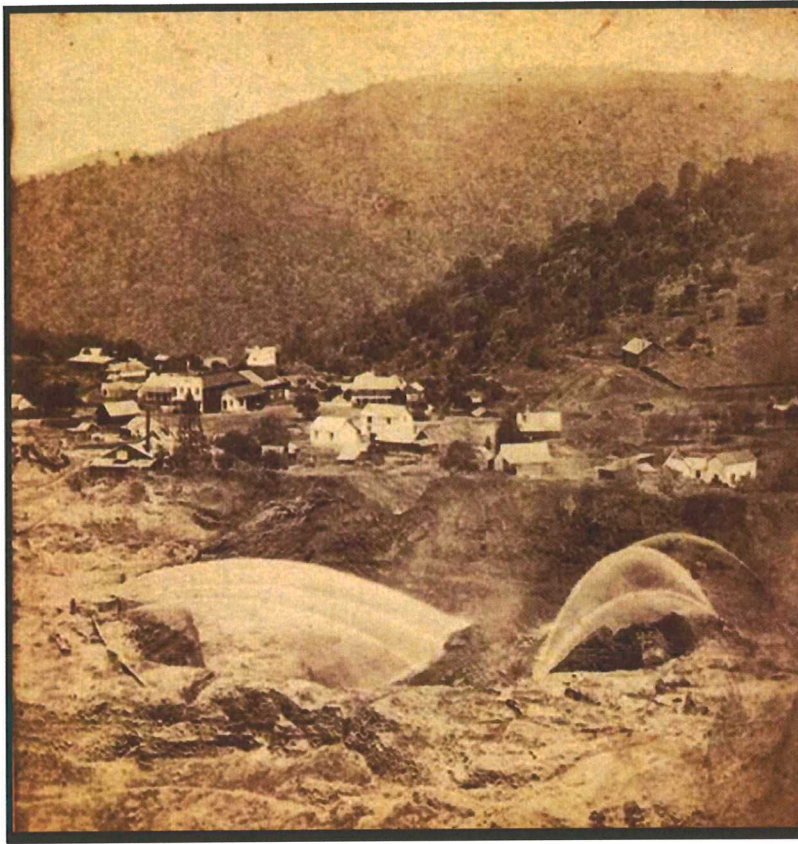
In addition, seen on the map are three early hydroelectric power houses, the Yuba Powerhouse, the Colgate Powerhouse with the Nevada Powerhouse "Rome Powerhouse" established 1896, being the first hydroelectric power plant in Nevada County suppling power over a large distance.

The "Rome Powerhouse" is considered the beginning of PG&E.

¹¹ Map, courtesy of the Searls Library, Nevada County Historical Society. From the Niles Sealrs Law Office client, Excelsior Ditch collection.



Pictured above is a photograph of the "Rome Powerhouse" built by the Nevada Power Company. The powerhouse has recently been designated as a Nevada County Historical Landmark. Its history can be found in the Nevada County Historical Landmarks Commission online publication, Exploring Nevada County.



12

Sucker Flat 1870, Blue Point Gold Miner Company

The Beginnings of Hydraulic Mining

Edward Matteson is given credit for inventing hydraulic mining at American Hill Diggings in Nevada City, but more likely it was a collaborative effort. This may have occurred first along Greenhorn Creek east of Nevada City at the Buckeye Claim.¹³ The year was 1853. In January 1855 miners gathered at the Branch Saloon at Rose's Bar to form the Excelsior Mining and Canal company. During the latter part of 1854 and early 1855, \$250,000 was subscribed the Company to build the China Canal, which was destined to become an extension of the Excelsior Ditch. The China canal was approximately 10 miles long built from Deer Creek to Smartsville to the hydraulic mines of that area. The China Canal was completed in 1857.

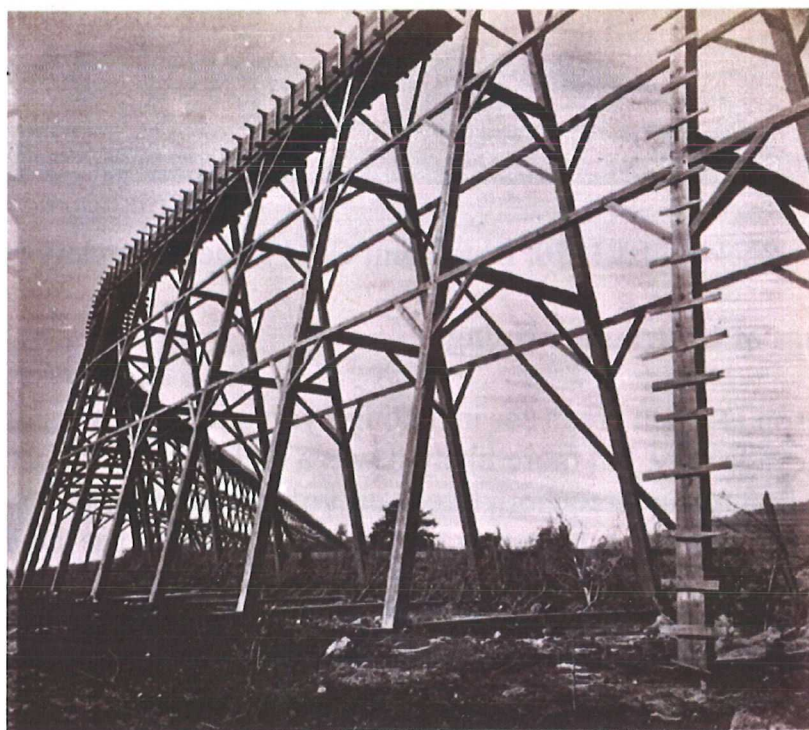
¹² Source, CSU, Chico. Merriam Library, Collection_303

¹³ Meals, Hank, "Yuba Trails and Tales, Hydraulic Mining in the Yuba and Bear River Basins." Ref. May, Philip Ross, Origins of Hydraulic Mining in California. Holmes Book Company 1970. Yubatreadhead.blogspot.com May 2018.



14

Hydraulic Mining at Malakoff Diggins, 1874



Excelsior Flume 1870 near Smartsville.

¹⁴ Carleton E. Watkins, Hydraulic mining at Malakoff Diggins, North Bloomfield Mining Co. **1874**



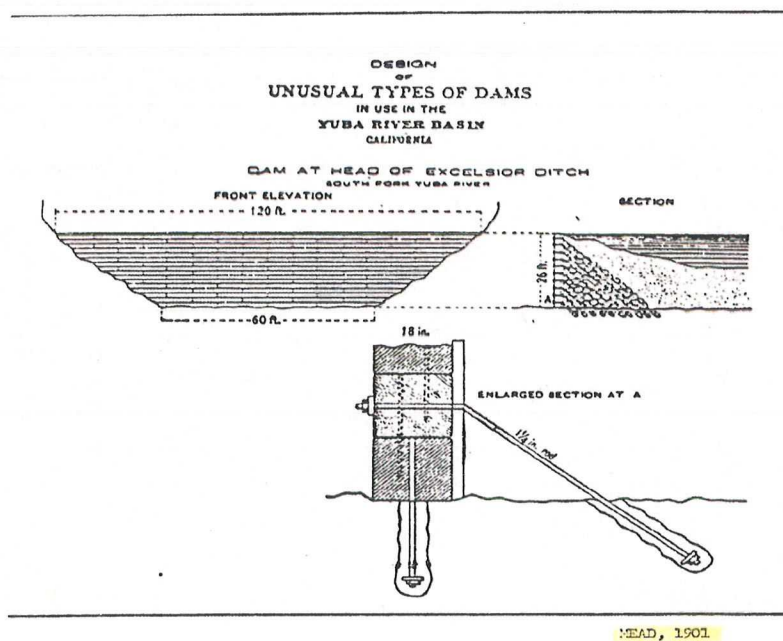
The Excelsior Flume, along the steep ridge
above Deer Creek not far the historic Anthony House stage stop.

Then in 1858 through 1859 another \$500,000 was spent to build 19 miles of canal from Deer Creek to the South Yuba River head dam located about 3 miles above Highway 49 on the South Yuba River, joining the China Canal at Deer Creek. The two canals now continued as one to the Smartsville area.

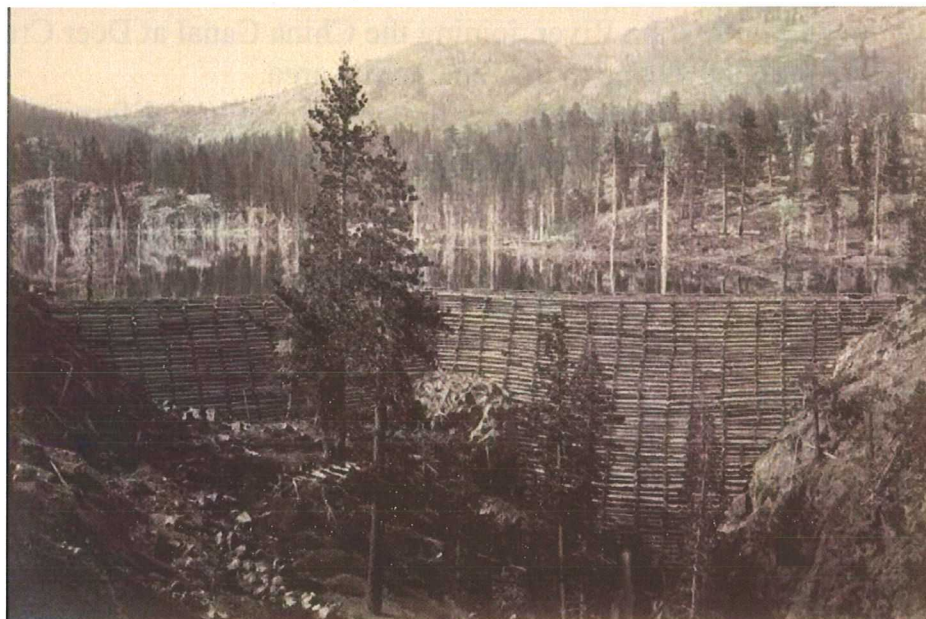
This was the greatest monetary investment for any project in California at the time. It clearly marked the departure from simple mining use of the Long Tom and rocker and the technological shift to predominately hydraulic placer mining.

The ditch consisted of over 64 wooden flumes, mud lined ditches and part stone walls built by Chinese labor.

In 1861-1862 the great flood occurred which flooded most of the Central Valley, washed out almost all the Sierra bridges as well as most of the flumes and ditches including large portions of the Excelsior. They were rebuilt by the summer of 1862. In the early 1870s Charles Ayres from Boston buys the Excelsior Canal Company.



The drawing above shows the structure of the Excelsior Ditch stone and masonry head dam that replaced the 1878 head dam. The original head dam would have been made of wood cribbing. Today the dam has been reduced to a remnant only and is not cable of diverting water.



Picture above is a photograph of the English Dam on the Middle Fork of the Yuba River, circa 1857. It is an example of a **wood cribbed dam**. The 1883 collapse of

English Dam, caused by sabotage, capped many years of conflict between hydraulic miners in the mountains and farmers and ranchers in Marysville and Yuba City. It led in part to the Sawyer Decision of 1884, from the U.S. Ninth Circuit Court in San Francisco which eventually halted hydraulic mining.

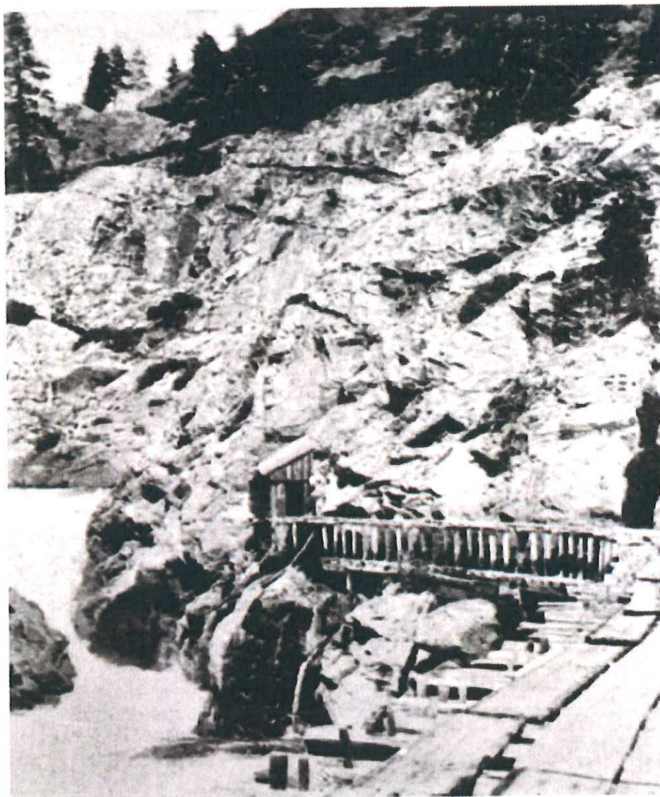


Figure B9. Trestled wood box flume, head of South Yuba Ditch (PG&E Archives)

The photograph above is a portion of the South Yuba Canal head dam and the diversion flume, circa 1855, which was similar to the Excelsior head dam of the same period.¹⁵ You can also see a small, roofed section of the flume that covers a cut through the rock face to the start of the head dam. The Excelsior head dam and ditch were located several miles farther downstream on the South Yuba River below Purdon Crossing. In 1999, I led a group of South Yuba River State Park

¹⁵ National Register of Historic Places Inventory, Ott's Assay/South Yuba Canal Office, April 1975, page 7.

docents on a field trip to the remnants of Excelsior Head Dam and Rome Powerhouse¹⁶.

I observed that the first 75 to 100 yards of the dam diversion consisted of the canal ditch blasted through solid granite. The course of the diversion ditch of the Excelsior is on the South side of the South Yuba River and then begins its 31-mile journey to the Smartsville area.

By 1880 the Excelsior Canal Company's Excelsior ditch and flumes are rebuilt once more requiring constant yearly maintenance.¹⁷

During 1875 farmers crops, livestock and livelihoods were destroyed with towns such as Marysville inundated under thick mud. The year 1878 saw the Anti-Debris Association form to end hydraulic mining or hold the hydraulic mining companies accountable for the damages incurred. This was a movement of farmers, businessmen and towns across the Central Valley that were objecting to hydraulic mining due to being flooded with "slickens," hydraulic mining mud and debris, washed far downstream.

The Excelsior Ditch company in the latter part of the 1880s had grown to more than 110 miles of ditches. However, on January 7, 1884, Judge Lorenzo Sawyer renders his final decision in the case of Woodruff v. North Bloomfield Gravel Mining Company, which many consider the Nation's first environmental law.¹⁸ Judge Sawyer's decision will eventually closedown hydraulic mining by requiring hydraulic mining companies to stop their operations unless they can control the "slickens" washed downstream. Over the next 10 years a slowdown occurs,

¹⁶ This was training field trip for park docents, led by Ranger Chuck Scimeca, studying the cultural history of the South Yuba River Canyon. We were guests of Roger Hodgson on his private property at the time. The property is now owned by Michael Funk who recently registered the "Rome Powerhouse" as a Nevada County Historical Landmark.

¹⁷ The cost of repair of flumes was generally about 10% of the original cost of the entire project, which had a life expectancy of 6 to 8 years (Hayley 1923). Haley, Charles Scott, Gold Placers of California. Ca State Mining Bulletin No. 92

¹⁸ The case of Woodruff v. North Bloomfield Gravel Mining Company was a lawsuit brought to [California](#) courts in 1882 where a group of local farmers sued [North Bloomfield Mining and Gravel Company](#) over damages caused to farmland in the [Central Valley](#).^[1] The farmers who brought the suit claimed that the company's [hydraulic mining](#) operations (which were used to mine [gold](#) in the years following the [California Gold Rush](#)) resulted in the disposal of excess sediment, debris, and chemicals in local rivers. Prosecutors argued that the debris raised riverbeds and restricted flow in the rivers leading to heavy man-made flooding. In the years prior, flooding of debris and chemicals had destroyed a large portion of the valley's agriculture. Wikipedia, Woodruff v. North Bloomfield Gravel Mining Company.

hydraulic mining is shut down by the federal inspectors due to the failure of the hydraulic mining companies to adequately control the harmful “slickens” and the canal companies slowly shift from supplying water for mining to irrigation.

The year 1887 saw the Excelsior Ditch Company change its name to the Excelsior Water and Mining Company with pressure rapidly growing to shift from mining to ditch water being used for agricultural use.



19

Capital Stock share reflecting the 1877 second consolidation and name change to Excelsior Water & Mining Company.

The Excelsior Water and Mining Company and its investors were constantly trying new innovating ways to increase their profitability. Not surprisingly, the Company was one of the earliest innovators using new technology in northern California, in fact, on May 10, 1879, “The first electric arc light was introduced at their mining claim on Deer Creek near Smartsville, allowing 24 hours a day operation.”²⁰

In 1896 the Excelsior Water and Mining Company’s permit to operate was revoked by the “United States Engineers” (today’s Army Corps of Engineers), a direct result of Judge Lorenzo Sawyer’s decision. After 1896 the Company’s water is

¹⁹ Excelsior Water & Mining Company client file, Searls Historical Library, Nevada County Historical Society.

²⁰ Colman, Charles, P. G. and E. of California, The Centennial Story of Pacific Gas and Electric Company 1852-1952, McGraw-Hill 1952. Page 56.

used primarily for irrigation. By 1925 the Nevada Irrigation District (NID), a public irrigation district, which formed in 1921 takes over the Excelsior Water & Power Company (name change)²¹ and the South Yuba River Canal Company ditches. The "Excelsior Ditch" now is used solely for agricultural irrigation until it was abandoned in 1963 by NID and quit-claims rights of the Excelsior Ditch to the Federal Bureau of Land Management.²²

The Independence Trail, the Nation's First Accessible Wilderness Trail

The Independence Trail is the first identified wheelchair accessible wilderness trail in the United States and takes advantage of the Excelsior Ditch's 1858 moderate gradient which today allows for both the disabled and non-disabled visitor to enjoy the outdoors and learn more about our common history while visiting South Yuba River State Park.

Most of the remaining original wooden flumes of the Excelsior Ditch were destroyed in the 1988 49er Fire and then again in the 2020 when the Jones Fire destroyed the reconstructed flumes of the Independence Trail. Presently, the California State Department of Parks and Recreation and the Yuba Bear Land Trust are committed to the rebuilding of the destroyed and damaged flumes and trestles. The Excelsior Ditch is indeed an important part of Nevada County History and is a fine example of the craftsmanship and ingenuity of our early pioneer ancestors.

²¹ Delivering Water for Life, Nevada Irrigation District Chapter 5, page 5

²² Gray, Robert, Determination of Excelsior Ditch for National Register of Historic Places, Bureau of Land Management, September 1980. Other Reference Sources.



When this photograph was taken, Flume #28 which spans Rush Creek on the Independence Trail/Excelsior Ditch had recently been restored. Regrettably, a few years later it was destroyed by the Jones Fire of 2020.

The Excelsior Ditch & Independence Trail, A Proposed Nevada County Historical Landmark

In September of 1980 the United States Bureau of Land Management completed a study that determined the Excelsior Ditch of Nevada County was eligible for inclusion into the National Register of Historic Places. The report was completed by historian Robert E. Gray. On December 18, 1980, Dr. Knox Mellon, California State Historic Preservation Officer, concurred with BLM's determination to list the Excelsior Ditch on the National Register of Historic Places. Regrettably, for unknown reasons it was not placed on the Register.

The Excelsior Ditch is a precious reminder of Nevada County's past and the rapid advancement in technology that the movement of water played in Nevada County's development and that of the State of California. The Excelsior Ditch is both historically and culturally significant and has unique engineering attributes as well.

In addition, the Excelsior Ditch spans more than 165 years of Nevada County history evolving with the people then and now, highlighting its successes and failures. After first seeing the rapid economic development of hydraulic mining and the destructive consequences, then the ditch's water being made available for

use in agriculture and the production of hydroelectricity. Finally, its abandonment by NID as a water delivery system and then being converted to the Nation's first Wilderness Accessible Trail, tells a story of Nevada County people's strength and determination through the decades.

The California State Parks Department and Bear Yuba Land Trust (property owners)

Recently, I spoke with California Department of Parks and Recreation Chief of Cultural, Interpretation, and Partnerships for the Sierra District, Alexandra Neeb, about designating the Excelsior Ditch as a Nevada County Historical Landmark. We both agree that the Excelsior Ditch is worthy of the designation.

The Excelsior Ditch for several miles runs through South Yuba River State Park high above the South Yuba River on its way downstream towards Bridgeport and beyond. In addition, a portion of the historic Ditch includes the alignment of the well-known Independence Trail developed by Naturalist John Olmsted who first viewed the historic ditch in 1969. It took John another decade to gather the funds to purchase the property and then begin construction of the trail and flumes over several years with more than 100 volunteers. By 1978 the first people in their wheelchairs began following the path of the historic ditch.

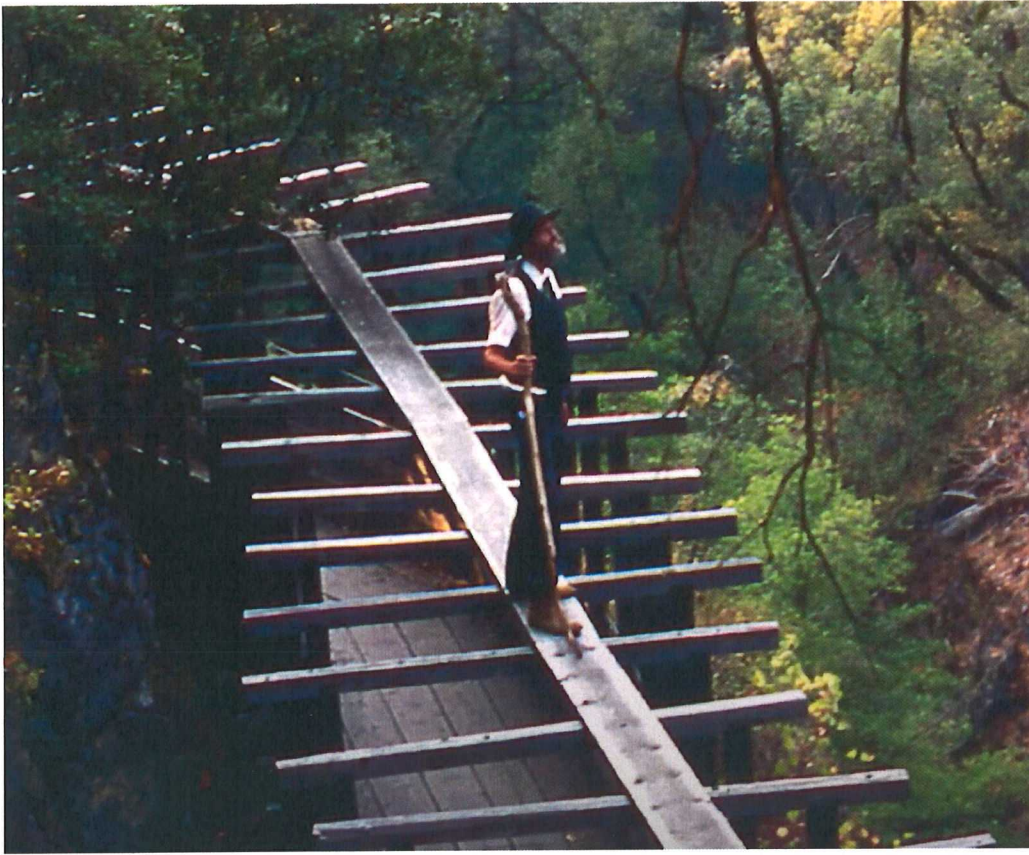
The California State Department of Parks and Recreation entered a partnership with John Olmsted and the group he founded, Sequoia Challenge, in 1986 to manage the Independence Trail.

After John's death in 2012, the Yuba Bear Land Trust, the successor of Sequoia Challenge continues the partnership with California State Parks to cooperatively manage the Independence Trail.

A 2022 documentary film, "A Wild Independence" by Alden Olmsted, John's son, is highly recommended. The film tells a history of the Excelsior Ditch, Nisenan Tribe, the Independence Trail and that of its founder, John Olmsted.

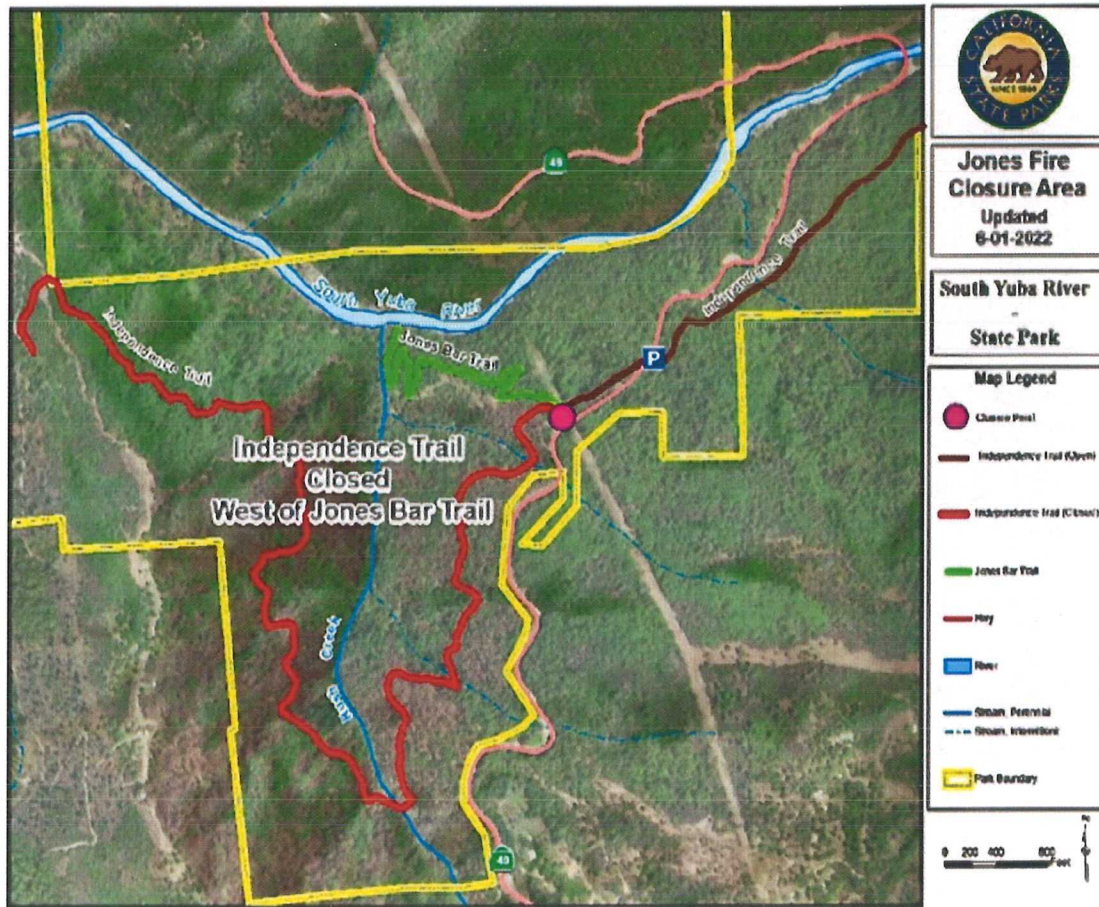
"A Wild Independence" runs 25 minutes, link below.

<https://youtu.be/GxMTgkyM6Mc?si=ZMHMOIhnVoWwfLyL>



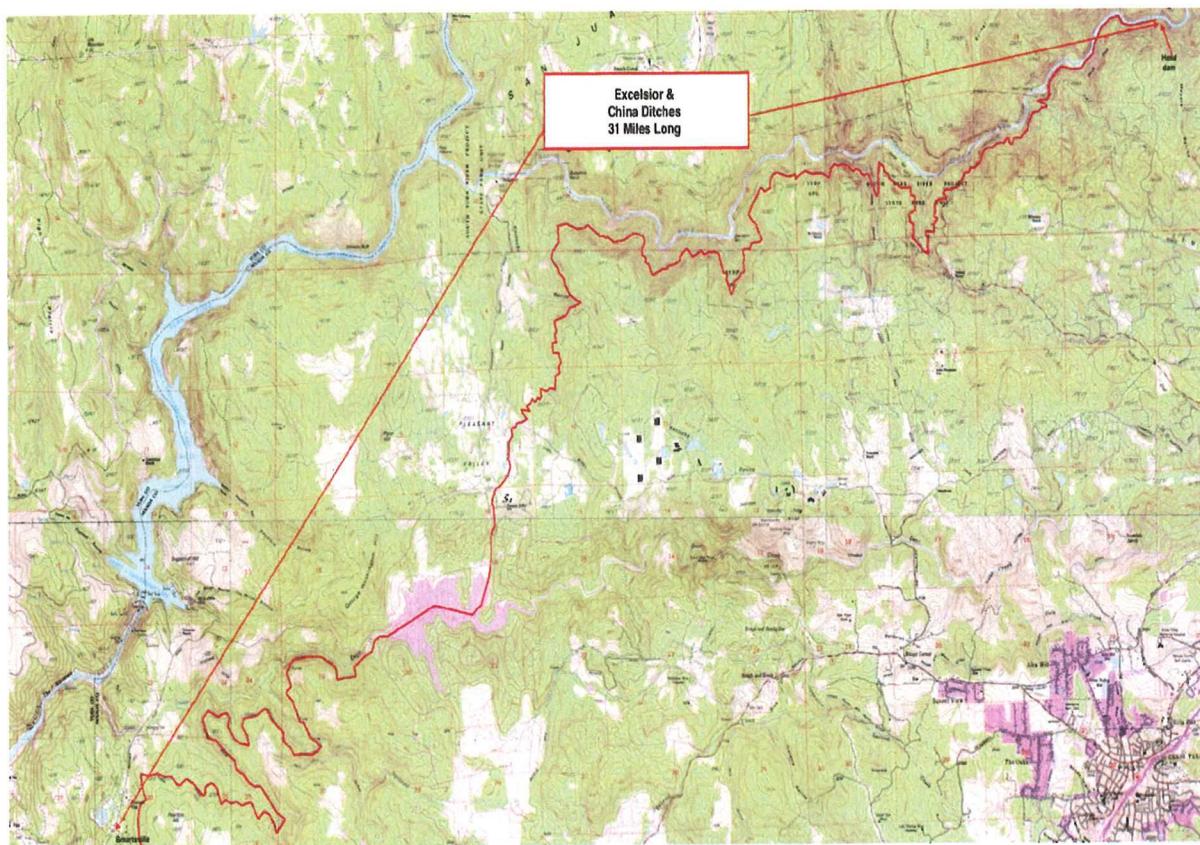
Photograph of John Olmsted standing atop of Flume #28, which was lost to the Jones fire of 2020. John always lobbied for flume re-construction to be historically accurate as possible. John at times was disappointed when the California Department of Parks & Recreation overruled his flume design proposals for required public safety standards. However, the commitment to historic accuracy continues today within the planning for the rebuilding of the flumes by California State Parks.

Maps



California State Park map above, shown in red, the portion of the west trail closed due to the 2020 Jones Fire which corresponds to about two miles of the original alignment of the Excelsior Ditch from the Hwy 49 trailhead west to Jones bar Road.

Maps



The map above shows the Excelsior and China Ditch, some 31 miles long from the head dam to the town of Smartsville. Note the red line (Excelsior and China Ditches) between the arrows, head dam to Smartsville on the bottom and top of the map.

Bibliography

Byrd, Davis S., *Tahoe National Forest Roads, and Trails in the Tahoe National Forest: A Contextual History, 1840 to 1940*, September 1992.

Coleman M., Charles, *P.G. and E. the Centennial Story of Pacific Gas and Electric Company, 1852 to 1952*, McGraw-Hill, New York, 1952.

Gray, Robert, *Determination of Excelsior Ditch for National Register of Historic Places*, Bureau of Land Management, September 1980.

Greenland, Powell, *Hydraulic Mining in California A Tarnished Legacy*, Arthur Clark Company, Spokane, Washington 2001 page 33.

Landers, Dom, *The Ditches of Nevada City*, self-published, April 2023

Mac Doyle, Errol, *Mines and Minerals of Nevada County, California* State Mining Bureau, Sacramento 1919.

Rigby, George, *The Saga of Smartsville, the Collected Stories of George Rigby* Comstock Bonanza Press 2014. Page 84

Smith, Kathleen, *Mining in Yuba County*, Arcadia Publishing, Charleston, South Carolina, 2015.

Smith, Kathleen, *Smartsville and Timbuctoo*, Arcadia Publishing, 2008.

Thompson & West, *History of Nevada County 1880*, Howell-North Books 1970.

Historian Robert Gray's Bibliography,

The following pages, 23-28, contain Robert Gray's bibliography that was used throughout this report, *Determination of Excelsior Ditch for National Register of Historic Places, Bureau of Land Management, September 1980*, for the Bureau of Land Management and the California Office of Historic Preservation.

Bibliography

Beck, Warren A. and Ynez D. Haase, Historical Atlas of California, University of Oklahoma Press, 1973.

Gives general historic overview of California with topical essays on a number of related areas.

Browne, J. Ross, Resources of the Pacific Slope: a statistical and descriptive summary of the mines and minerals, climate, topography, agriculture, commerce, manufactures, and miscellaneous productions, of the states and territories west of the Rocky Mountains, with a sketch of The Settlement and Exploration of Lower California. D. Appleton and Co., N.Y., 1869. The annotation is contained within the title of this work.

Candelaria, Dale D. "Infancy of Nevada Irrigation District." unpublished, January 1975.

This report deals with the background, reason and cause for development of the NID along with the process of acquisition and control of the counties water resources.

Clark, William B. Gold Districts of California Bulletin 193, California Division of Mines and Geology, Sacramento, 1970
A detailed listing and description, with the historical sketches and geological summaries of the California Gold districts.

Coleman, Charles M. PG&E of California: The Centennial Story of Pacific Gas and Electric Co. 1852-1952 McGraw-Hill, Inc. 1952.
gives pre-PG&E background and follows development of Electric and Gas power in California and the part PG&E played.

Crawford, J.J. (State Mineralogist)
The California State Mining Bureau Thirteenth Report for Two Years ending September 15, 1896, State of California, 1896
This report deals with the technical explanation and description of mining and irrigating canals, artesian wells, etc. Also the modes of operation and capacities for California.

Delay, Peter J. History of Yuba and Sutter Counties, California with biographical sketches: of the Leading Men and Women of the counties who have been identified with their growth and development from the early days to the present. History Record, CA. 1924. Annotation contained within title.

Dunn, R.L. River Mining: Ninth Annual Report Year ending December 1, 1889. State Mining Bureau. This bulletin gives description of river mining and associated canals, flumes, dams, etc. in California at this time.

Foley, Doris A Saga of the South Yuba Canal Company
two parts, Nevada County Historical Society, 1969.
Presents brief history and people of the S.Y.C.C.
Its development and decline.

Gudde, Erwin C., Corp. California Gold Camps: A Geographical and
Historical Dictionary of Camps, towns and localities where
gold was found and mined: Way side Stations and Trading
Centers, ed. Elisabeth K. Gudde, University of California
Press, 1975. Annotation contained within title, provides
brief historical sketches of those which achieved prominence.

Haley, Charles Scott, Gold Placers of California:
California State Mining Bulletin No. 92, State of California
1923. This bulletin gives indepth details of flume, dam and
ditch construction, also mining resource of that time, making
it a good cross reference of early works, shows development and
different ideology.

Hanson, George Emmanuel. Early History of Yuba Valley A.B., 1919.
Thesis, University of California, Berkeley, 1924. This
thesis deals with the history, gold discovery and mining along
the Yuba River. Its development and eventual decline.

Hoover, Mildred Brooke and Hero Eugene Rensch, Ethel Grace Rensch.
Historic Spots in California, Third Edition, Revised by
William N. Abeloe, Stanford University Press, 1978. first
published, 1932.

Hopkins, Robert "History of Excelsior Canal Company"
unpublished, date unknown. Gives a brief history with dates.

Jones, Pat. A Little Powerhouse called "Rome" 1895-1910.
Nevada County Historical Society, January 1969. Gives a brief
history of this colorful, one of the first, hydro-electric
plants in the Sierras. Also the first owned by the men who
developed the giant California Utility, Pacific Gas and Electric
Company.

Kahr, William L. The California Water Atlas,
State of California, 1979, display of most aspects of water supply,
delivery, and use in California.

Kroeber, A.L. Handbook of the Indians of California,
republished by Dover Pub. 1976, orig. pub., 1925. This classic
work summarizes the background, development and region of California's
native Americans. Excellent source on tribal territories.

Lardner, W.B. and W.J. Brock, History of Placer and Nevada Counties:
with Biographical sketches,
Historic Record Co., Cal. 1924. Much like Thompson and West with
the exception that it carries the history through to 1920.

Loveland, Chester H. "Report and Analysis of Operations, Property Values, Revenues and Expenditure of Excelsior Water and Mining Company for Rate Fixing Purposes" October 1921, unpublished.
This consulting engineer's report deals with the proposal for water rate increase presented before the Railroad Commission.

Mead, Elwood, Report of Irrigation, Investigations in California
Bulletin 100 U.S.D.S. Washington, 1901. This is a report of the irrigation investigations conducted by US Office of Experiment Stations with the California Water and Forest Association, consisting of observations by irrigation experts on existing (1900) legal, engineering and agricultural condition along the nine major California Rivers and the growing interest and scarcity of water and its control.

Morton III, W. Brown, Gary L. Hume. "The Secretary of the Interior's Standards for Historic Preservation projects with guidelines for applying the Standards", USDI, Washington, 1979.
Presents pertinent preservation guidelines which comply with the laws and orders enacted or decreed to preserve the objects, places and things of recognizable National Heritage.

Napton, L. Kyle and Elizabeth A. Greathouse, "Archeological Investigations, Bureau of Land Management South Yuba Area," Institute for Archeological Research, California State College, Stanislaus 1978. Unpublished.
Report of survey worked performed in the South Yuba Area of BLM administered lands. With results and recommendations.

Owens, Kenneth N. "Historical overview of Mother Lode area of the Western foothills and mountains of The Sierra Nevada Mountain Range in California," 1979. 2 vols. (unpub). Gives a brief history and site-specific information on the Mother Lode area.

Spink, Joseph E. (Chief Engineer) "Report on Development Project Proposed by Excelsior Water and Power Company" Unpublished, 1922.
This report dealt with the past operating history, the condition of the system at the time and recommendations for improvement to meet the thrust of the developing NID, or to make the determination to sell-out.

Wells, Harry Laurenz, History of Yuba County, Separate History of Nevada County.
Thompsons and West, 1888. gives brief historic highlights of the county with a biography of prominent people.

Williams, Sydney H., Robert W. Cook, Corwin R. Mocine
Nevada County California General Plan, 1990
published by authors, 1966. This plan is a report of the counties status, growth rate and development, with projections and recommendations for future urban planning.

Other Reference Sources

California Historical Landmarks, California State Department of Parks and Recreation, 1979

This work lists by county, designated historical landmarks, sites on the National Register of Historic places, State Historical Parks, Mounuments and Recreational areas.

California History Plan, Vol I - Comprehensive Preservation Program

State of California Department of Parks and Recreation, December 1973. Established logical identification and selection of historic resources and establishes theme deficiency analysis and preservation priorities.

California Inventory of Historic Resources,

State of California Department of Parks and Recreation, March 1975. Numeric listing by county and theme of the states historical landmarks.

"Excelsior Company Papers" primary source material located in Searls Historical Library, Nevada City, California. September 1980.

Multiple Use Survey Report. South Yuba River Tahoe National Forest, California.

prepared by USDI, Bureau of Land Management and USDA, Forest Service, 1970. Report is a brief analysis of the South Yuba River and development as a recreational area, for submission and addition to Section 5 of the Wild and Scenic River Act. (PL.90-542, Oct. 2, 1968)

NID abandons Excelsior Ditch, Article from the Union, Grass Valley- Nevada City, Ca. Thursday, September 11, 1980. Deals with the release of the quit-claim rights to the ditch to the Federal Bureau of Land Management.

South Yuba Trail: Recreation Lands Acquisition Proposal.

USDI, Bureau of Land Management. July 1980. This proposal deals with the development of the South Yuba River Trail as a recreational resource and the utilization of the Excelsior Ditch for expansion of the trail, and the possible preservation of this historical facility.

Also: The Federal and State publications, laws and regulations pertaining to identification, evaluation and protection of historic and cultural properties,

The on-site survey notes of the Bureau of Land Management's Folsom Areas Civil Engineer, Brian McComber, October 1980.

Personal conversations with Jack F. Siegfried, Geological Consulting Engineer, now with Beeson Forest Surveys, Nevada City, CA., Sept. 1980. This eighty year old gentlemen was the geologist employed by I.E. Spink who did the Development Project Report of the Excelsior Water and Power Co. in 1920-22

Visited
Library and Departmental Resource
Depositories

Yuba County Library
California Section
110 Third Street
Marysville, California
(916)

United States Forest Service
Tahoe National Forest Headquarters
Hwy. 49 Coyote Street
Nevada City, California 95959
(916) 265-4531

Nevada County Historical Society
Searls Historical Library
PO Box 1300
Nevada City, California 95959
(916) 265-9941

Placer County Museum
1273 Hight Street
Auburn, California 95603
(916) 885-9570

California Historical Society Library
2099 Pacific Ave.
San Francisco, California 94109
(415) 567-1848
Mailing address: 2090 Jackson St.
San Francisco, Ca. 94109

Sacramento Museum and History Department
1931 K St.
Sacramento, California 95814
(916) 447-2958

California State Library
California Section
9th and Capitol Mall
PO Box 2037
Sacramento, California 95809
(916) 445-4149

Resource Preservation and Interpretation
California Dept. of Parks and Recreation
1220 K St.
Sacramento, California 95811
Interpretive Planning
(916) 445-9193

Manuscripts Division
The Bancroft Library
University of California
Berkeley, California 94720
(415) 642-3781

California Division of Mines and Geology
1419 9th St.
Sacramento, California 95811
(916) 445-5716

California Water Resources Department
1416 9th St.
Sacramento, California
(916) 445-9248

California State Archives
1020 O St.
Sacramento, California 95811
(916) 445-4293