

# 2021 Crop and Livestock Report



Department of Agriculture,  
Weights & Measures

## VEGETABLE, FRUIT & NUT CROPS

	Acres	Value
 33% Vegetables <sup>a</sup>	101	\$3,653,200
	95	\$2,448,600
 14% Other Fruits	41	\$349,200
	38	\$307,200
<b>Total Vegetable, Fruit &amp; Nut Crops Value:</b>		<b>\$4,002,400</b>
		<b>\$2,755,800</b>

## WINEGRAPE CROPS


	Acres	Total Tons	Value
 -9% Red Winegrapes <sup>c</sup>	315	1201	\$1,855,700
	314	1157	\$2,040,600
 -5% White	94	426	\$593,400
	94	413	\$625,600
<b>Total Winegrapes:</b>			<b>\$2,449,100</b>
			<b>\$2,666,200</b>



## NURSERY PRODUCTS

	Acres	NO. of Trees	Value
 1% Nursery	6		\$483,900
	5		\$480,000
 9% Cut Flowers	8		\$237,300
	7		\$218,100
 -25% Christmas Trees		1800	\$89,000
		2150	\$110,900
<b>Total Nursery:</b>			<b>\$810,200</b>
			<b>\$809,000</b>

## TIMBER

	Amount	\$/MBF <sup>e</sup>	Value
 -57% Timber	7,326 MBF	\$111.08	\$813,800
	13,545 MBF	\$141.01	\$1,910,000

## LIVESTOCK, POULTRY AND LIVESTOCK PRODUCTS

	Head <sup>1</sup>	\$/Head	Value
26%  Steers	4,100	\$1,255	\$5,145,500
	4,100	\$1,000	\$4,100,000
2%  Cows	2,100	\$1,174	\$2,465,400
	2,100	\$1,150	\$2,415,000
25%  Sheep & Lambs	1,300	\$192	\$211,200
	1,300	\$130	\$169,000
-15%  misc livestock <sup>2</sup>			\$216,900
			\$250,500
158%  Specialty <sup>3</sup>	200		\$794,200
	219		\$308,400
<b>Total Livestock:</b>			\$8,833,200
			\$7,242,900



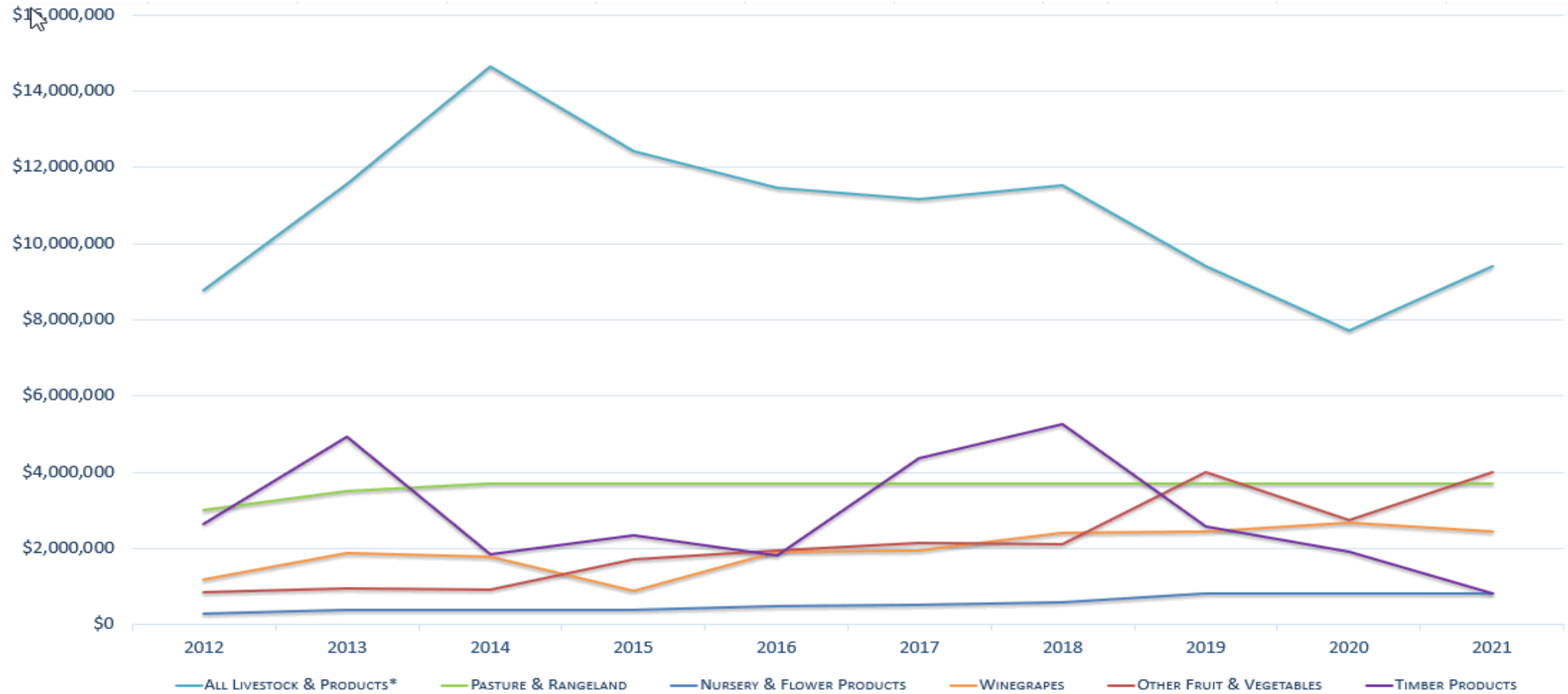
## APIARY AND EGG

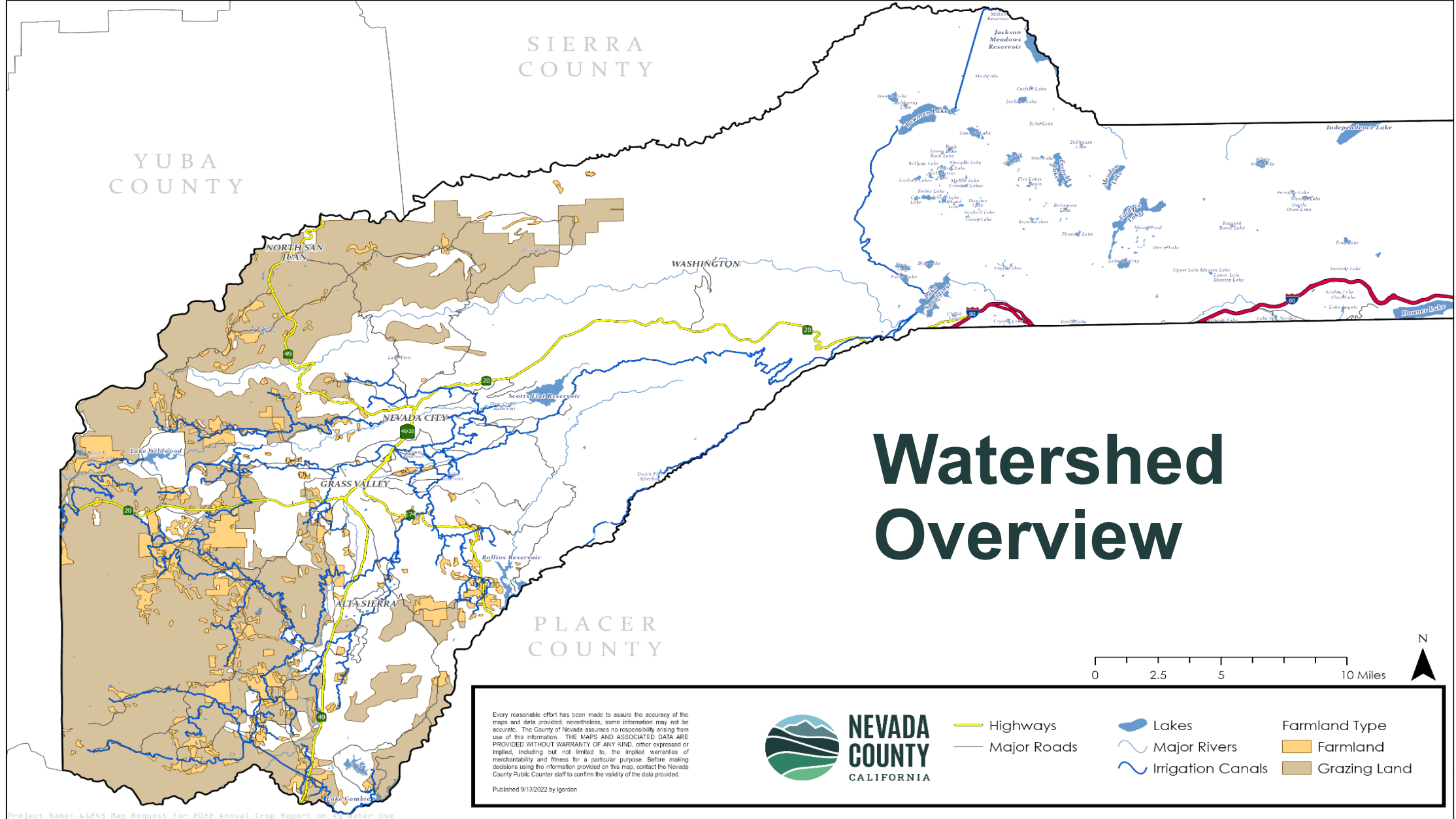
	Amount	\$/Unit	Value
-15%  Apiary <sup>4</sup>	3100 hives	---	\$316,400
	3300 hives	---	\$370,700
20%  Honey	25,300 lbs	\$5.31	\$134,600
	26,500 lbs	\$4.25	\$112,600
17%  Eggs <sup>5</sup>	22,300 doz	\$7.29	\$162,600
	18,715 doz	\$7.20	\$134,800
<b>Total Apiary &amp; Eggs:</b>			\$613,600
			\$618,100

## PASTURE AND RANGELAND

	Amount	\$/Acre	Value
0%  Pasture	10,000 ac	\$180	\$1,800,000
	10,000 ac	\$180	\$1,800,000
0%  Rangeland	95,000 ac	\$20	\$1,900,000
	95,000 ac	\$20	\$1,900,000
<b>Total Pasture and Rangeland:</b>			\$3,700,000
			\$3,700,000

# 10 Year Summary





# Watershed Overview

Every reasonable effort has been made to assure the accuracy of the maps and data provided; nevertheless, some information may not be accurate. The County of Nevada assumes no responsibility arising from use of this information. THE MAPS AND ASSOCIATED DATA ARE PROVIDED WITHOUT WARRANTY OF ANY KIND, either expressed or implied, including but not limited to, the implied warranties of merchantability and fitness for a particular purpose. Before making decisions using the information provided on this map, contact the Nevada County Public Counter staff to confirm the validity of the data provided.

Published 9/13/2022 by Igrdon



 Highways	 Lakes	<b>Farmland Type</b>
 Major Roads	 Major Rivers	 Farmland
	 Irrigation Canals	 Grazing Land

Project Name: L1245 Map Request for 2022 Annual Crop Report on 20 Water Use

# Spotted Lanternfly

- Large in size (up to 25 mm long) & colorful.
- Detected in 2014 in Pennsylvania.
- Likely hitchhiked as egg mass on imported stone or associated packing materials.
- Lays eggs on any flat surface, including objects like the sides of trains including tree trucks as well as random non-living objects such as vehicles.
- Feeds on tree of heaven (*Ailanthus altissima*), but also appears to be preferring grape in North America.



A topographic map of the Tahoe region in California, showing terrain, roads, and water bodies. Numerous purple dots are scattered across the map, representing locations for invasive weed control. Key locations labeled include Independence Lake Preserve, Independence Lake, Carpenter Ridge, Hobart Mills Shooting Range, Hobart Mills, Boca Reservoir, Boca, Hinton, Union Mills, Old Greenwood Golf Course, Truckee, Tahoe Airport, Donner Memorial State Park, Donner Lake, Soda Springs, Norden, Donner, and California. Road numbers 85, 11, 889, and 89 are also visible.

# Invasive Weed Control

## Noxious Weed Control Benefits:

- Safeguard our natural infrastructure
- Strengthen climate resiliency
- Protect our water resources
- Decrease wildfire risk
- Preserve biodiversity
- Maintain our agricultural production
- Provide recreational opportunities

# Sustainable Agricultural Activities: Department Highlights

- 6,000 packages and shipments inspected for live exotic pests
  - 424 insect traps placed and inspected for live exotic pests
  - 340+ sites surveyed and treated for noxious and invasive weeds
  - Issued over 200 pesticide permits
  - Issued 27 Certified Producers Certificates, 6 Certified Farmers Markets, registered 47 organic producers
- 
- 813 weighing and measuring devices tested for accuracy



# Farm Day 2022

On September 14th, 2022, Nevada County Ag in the Classroom hosted its Annual Farm Day at the Nevada County Fairgrounds. This popular event was open to all Nevada County's 2nd, 3rd and 4th graders. This year we hosted 820 children including FFA guides and had over 30 exhibitor.



# 2021 Cannabis Supplemental



**No. of Authorized  
Cannabis Permits**

**Total Canopy  
Size**

**Estimated Value**

2021

112

18.74 acres

\$12,401,600

2020

57

9.13 acres

\$11,992,300



AGRICULTURAL BIOLOGISTS/  
WEIGHTS & MEASURES INSPECTORS

Preston Neufeld  
Homero “Tony” Romero  
Monica Weakley  
Luci Wilson

AGRICULTURAL TECHNICIANS  
Katelyn Carlson

OFFICE SUPPORT  
Lisa de Pew

Lastly, I would like to thank the many producers, industry representatives, businesses, and other public agencies who cooperated in supplying the data necessary to produce this report. Without their assistance, this crop report would not be possible.

**Thank you!**



**NEVADA  
COUNTY**  
CALIFORNIA

Department of Agriculture,  
Weights & Measures



**Questions?**