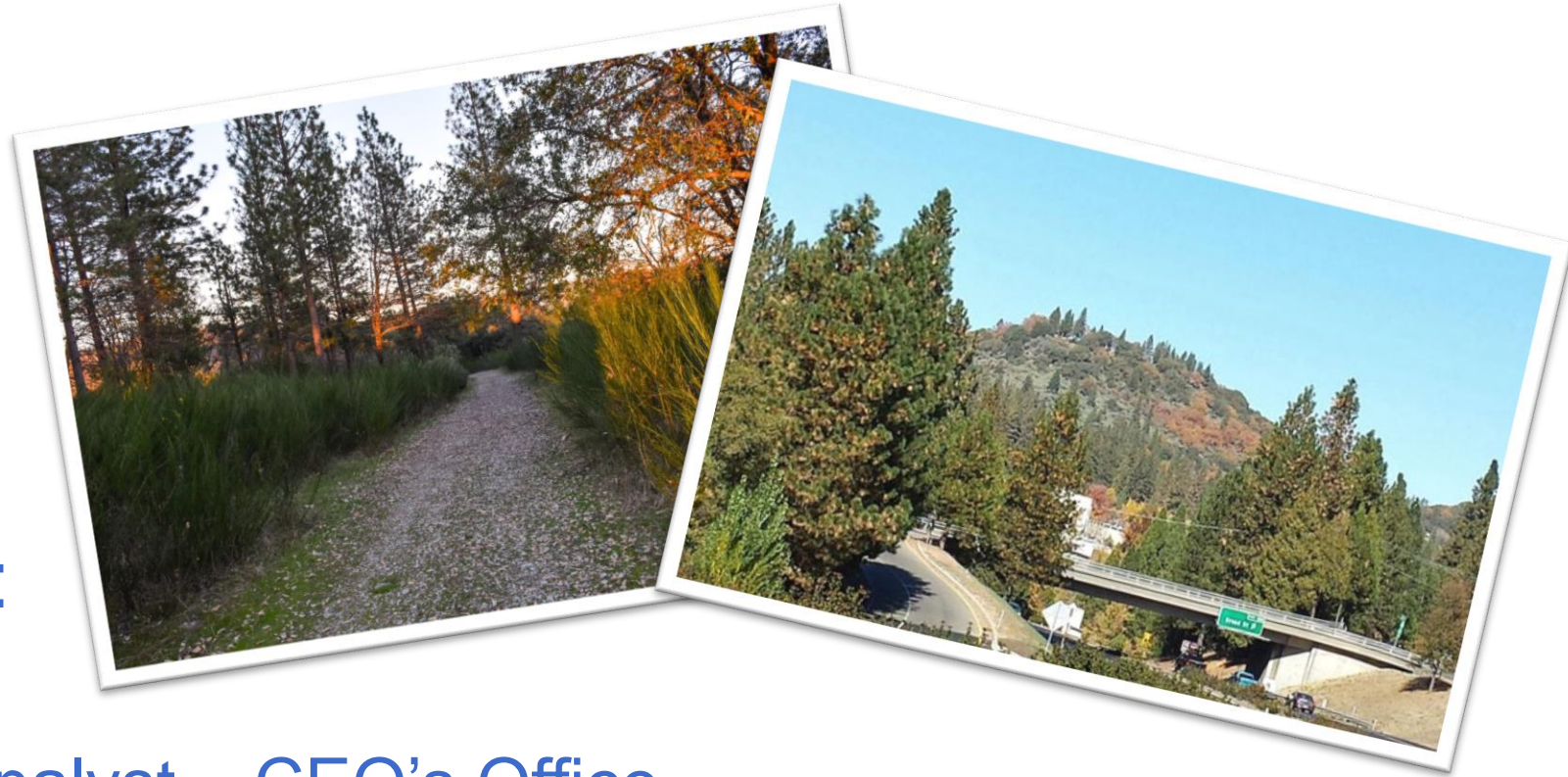


# Sugarloaf Mountain Trail

Presented By:  
Joshua White

Administrative Analyst – CEO's Office



# History

- In 2011 - Nevada City Purchased Sugarloaf Mountain with assistance from AB1600 funds.
- In 2012 - Bear Yuba Land Trust obtained easements expiring in 2020 and began developing the project along with Nevada City.
- April 2019 - Nevada County formed an inter-agency workgroup to help move the project forward.



## HISTORY OF THE TRAIL PROJECT

*January 2011* - Nevada City acquires the Sugarloaf property

*Summer 2012* - BYLT initiates feasibility studies to determine possible routes for trail

*Fall 2012* - BYLT initiates dialogue with Oglesby family with hopes to secure a trail easement over their property. Field review of proposed route over Tintle property with landowner.

*2013* - BYLT continues negotiation with Oglesby family, however, could not get a commitment so BYLT looks for an alternative route. Continued fieldwork and discussions with the owners of other properties.

*2014* - Nevada City Recreation Committee meetings; creates a management plan for the Sugarloaf property

*September/October 2015* - Trail Easements granted by Sutter (landowner of USFS office) and Tintle to BYLT.

*December 2015* - Public Meeting/Workshop held by the City to provide input regarding the Master Plan for Sugarloaf Property.

*January 2016* - Master Plan approved/adopted by the City for Sugarloaf Mountain.

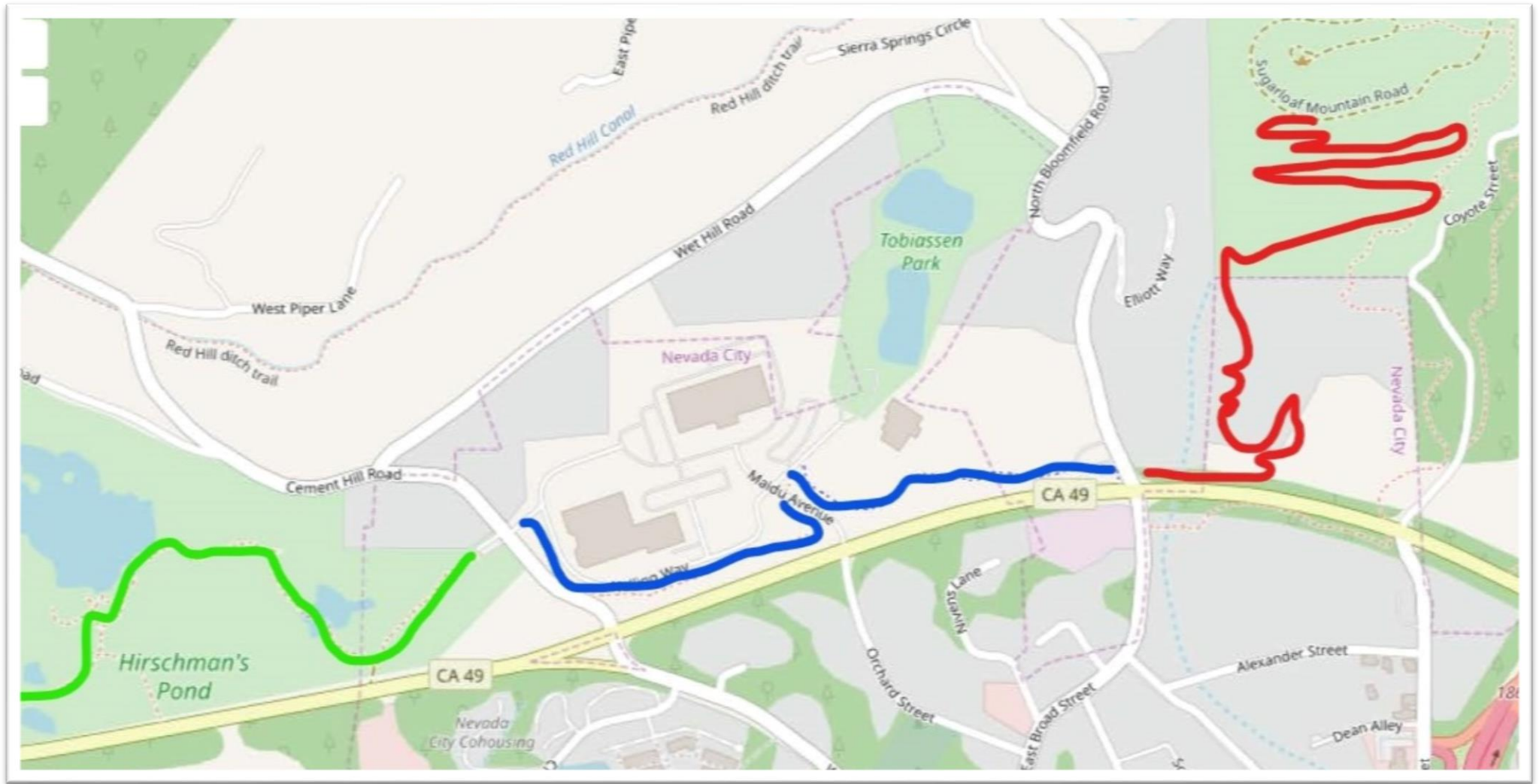
*Spring/Summer 2016* - --BYLT conducts trail route reconnaissance which includes marking and mapping the proposed trail route. Cultural Resource Survey undertaken to include any indications of mining residue that might have to be avoided or remediated. Survey completed and report submitted to BYLT in August. BYLT funded the survey and report. Report submitted to the City.

*September 2016* - Application presented to Planning Commission to select a route for construction of a trail in accordance with the Master Plan approved in January 2016.

*November 2016* - Planning Commission delays action on the trail route selection and construction for 90 days to allow BYLT to work with neighbors to reduce impacts

*Winter 2016-17* - BYLT holds meetings with neighbors and other interested parties to examine ways to reduce impacts

*March 2017* - Planning Commission approves trail project proposal as refined with input of neighbors and other interested parties.





# Workgroup Accomplishments

- Collection of Hirschman's pond parking data
- Tribal Consultation
- Prepared Rood Center Parking Agreement
- Researched funding sources
- Completion of CEQA
- Approval of the Sugarloaf Trail Project by the Nevada City City Council



# Workgroup Next Steps

Consideration  
of Rood  
Center  
Parking  
Agreement

Secure  
Funding  
  
Obtain  
Caltrans  
Permits

Continue  
Trail Building  
this Winter

Complete  
City and  
Private  
sections by  
Late  
Summer/Fall  
2020



# Rood Center Parking Agreement

- Parking identified as a CEQA concern
- Agreement with the City of Nevada City for 10 designated spaces in the Rood Center parking lot
- Parking will be available from sunrise to sunset on weekends and sunrise to sunset on weekdays except during business hours of 8 a.m. to 5 p.m.
- Agreement supports the public use of the trail and helps mitigate parking availability concerns.
- No anticipated public service impact on the Rood Center or Madelyn Helling Library.





# Community Benefits of Building Trails

## Local Homeless Camp

- Homeless in the area have been contacted and offered services by City police and the HOME team.

## Physical / Mental Health

- Spending even 20 minutes outside will have short term effects on the brain to reduce stress.
- For every 1 dollar spent in trails, there is a 3 dollar savings in healthcare costs.

## Response to 2017 Nevada County Citizens Survey

- Overall Natural Environment was rated far above average at a 94% positive rating





# Looking Forward

- Continued participation in interagency workgroups on trail building
- Support of the Pines to Mines trail from Truckee to Nevada City
- Continued collection of AB1600 Fees
- Complete EPS Feasibility Study



# Action Item

Recommend approval of the Sugar Loaf Trail Overflow Parking Agreement with Nevada City.

