



# RESOLUTION No. 24-455

## OF THE BOARD OF SUPERVISORS OF THE COUNTY OF NEVADA

### RESOLUTION AUTHORIZING THE TAX COLLECTOR TO SELL TAX DEFAULTED PROPERTY SUBJECT TO THE POWER TO SELL BY ONLINE PUBLIC AND/OR SEALED BID AUCTION

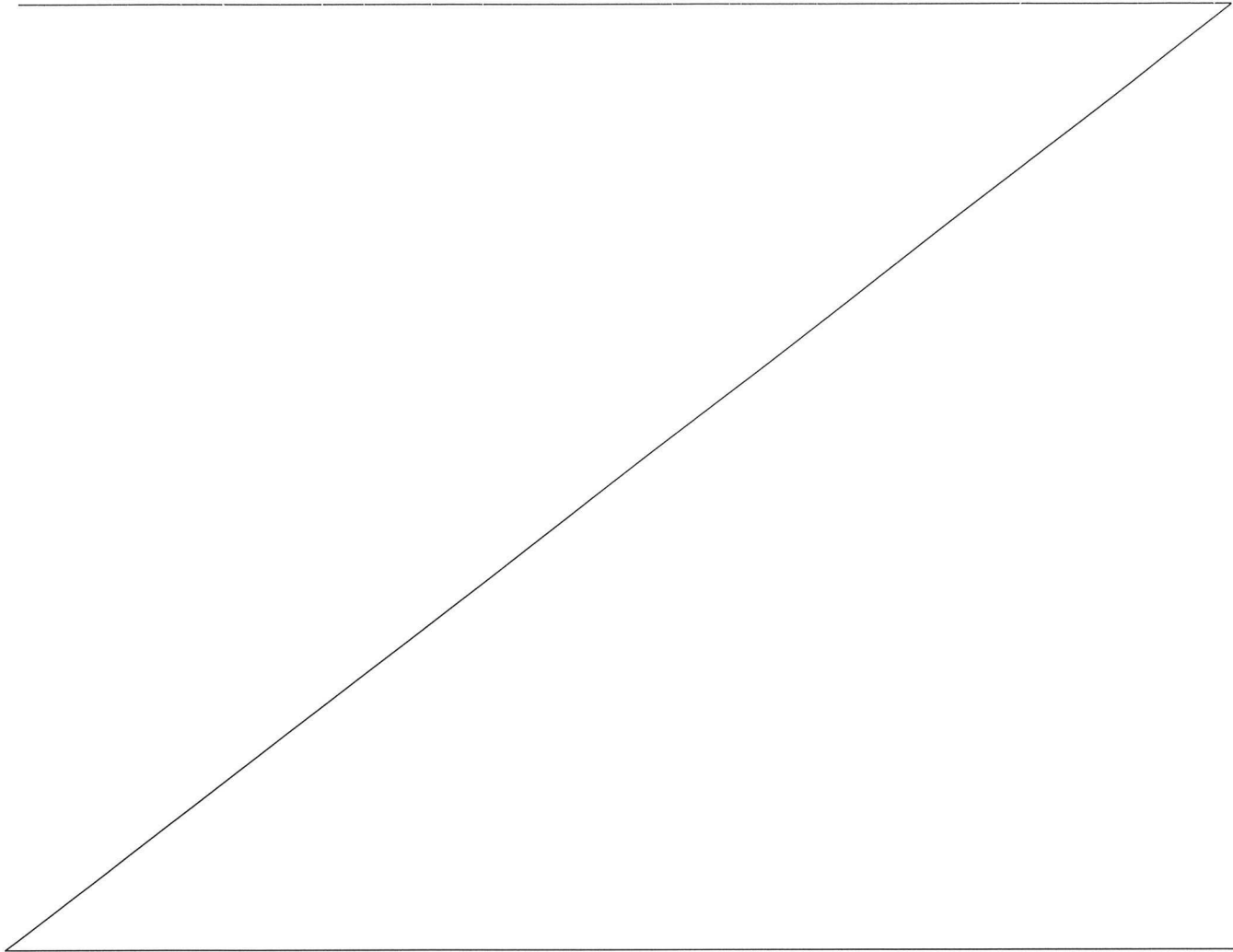
WHEREAS, real property with five or more years of delinquent taxes becomes tax-defaulted and is subject to the power of sale in accordance with the Revenue and Taxation Code §3691; and

WHEREAS, the Tax Collector requests the approval from the Board of Supervisors to sell, for the minimum stated price, the tax defaulted property that is subject to the power to sale and described on the attached Exhibit A, and in accordance with Chapter 7 of Part 6 of Division 1 of the California Revenue & Taxation Code; and

WHEREAS, the Tax Collector requests approval to sell via sealed bid any parcels identified during the auction process to be categorized as unusable because of their size, location and/or other conditions present that may qualify it for a sealed bid sale, for a reduced minimum bid; and

WHEREAS, in the event that any parcel does not sell after the initial offering, the Tax Collector requests approval to re-offer any unsold parcel(s) at the end of the auction at a reduced minimum price, pursuant to California Revenue & Taxation Code 3698(c), at a new sale within 90 days of the original sale.

NOW, THEREFORE, BE IT RESOLVED that the Nevada County Board of Supervisors approves the selling of these parcels attached as Exhibit "A" and directs the Tax Collector to sell the property described herein as provided for by law, pursuant to Chapter 7 of Part 6 of Division 1 of the California Revenue & Taxation Code.



PASSED AND ADOPTED by the Board of Supervisors of the County of Nevada at a regular meeting of said Board, held on the 20th day of August 2024, by the following vote of said Board:

Ayes: Supervisors Heidi Hall, Edward C. Scofield, Lisa Swarthout, Susan Hoek, and Hardy Bullock.

Noes: None.

Absent: None.

Abstain: None.

Recuse: None.

ATTEST:

TINE MATHIASSEN  
Chief Deputy Clerk of the Board of Supervisors

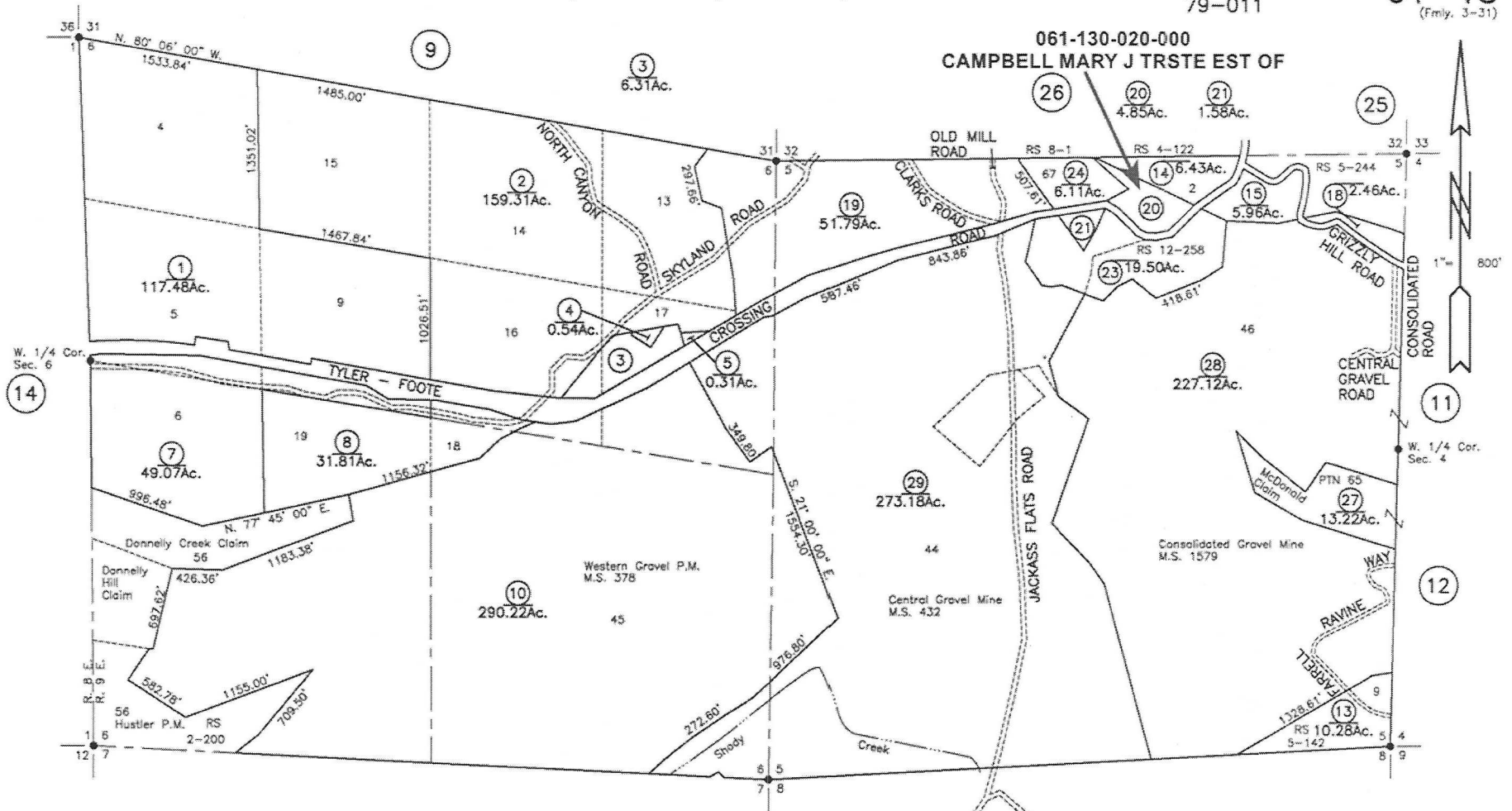
By: 

  
Hardy Bullock, Chair

**EXHIBIT "A"**  
**AUTHORIZATION AND REPORT OF SALES**

Under direction of the Board of Supervisors, by Resolution No. \_\_\_\_ dated August 20, 2024, the property listed below is to be offered for sale at public internet auction or by sealed bid sale (if noted) beginning November 7, 2024, and to be disposed of as follows:

PARCEL NUMBER	LAST ASSESSED OWNER	MINIMUM BID	SALE STATUS
061-130-020-000	CAMPBELL MARY J TRSTE EST OF	\$17,595.00	
061-250-004-000	CAMPBELL MARY J TRSTE EST OF	\$13,004.00	
036-350-004-000	CONFER JOAN K	\$21,019.00	
004-580-029-000	CROSS PAUL	\$40,962.00	
029-320-018-000	DENTY SCOTT	\$122,808.00	
054-490-012-000	DIAMOND ROBERT J	\$29,045.00	
064-130-033-000	DLUHOS EMRE ERANEST & ANN MARION ETAL	\$6,010.00	
061-140-061-000	DURKIN TODD	\$13,769.00	
061-140-083-000	DURKIN TODD	\$12,580.00	
052-310-015-000	EMRICH DEBORA S	\$33,993.00	
012-610-030-000	HOLLINGSWORTH RICHARD & ORLEAN TRSTE	\$11,571.00	
008-090-025-000	HOMMEL SHANNA	\$14,271.00	
037-350-007-000	HOSKINS SAMANTHA & TERRY	\$59,069.00	
050-490-005-000	KALENYUK MARINA	\$12,188.00	
006-380-051-000	LOMA RICA INDUSTRIAL PARK	\$3,094.00	
052-260-018-000	MACDUFF NANCY J	\$5,318.00	
047-140-003-000	MILAS TIMOTHY & KIM	\$9,190.00	
039-170-072-000	MILLER KAREN	\$6,473.00	
018-270-023-000	MOLTO BENE LLC	\$5,150.00	
061-100-014-000	MORRIS JAME E JR	\$25,185.00	
024-190-006-000	OWEN LANGDON W	\$21,257.00	
030-080-009-000	PANKEY-BRINKMAN HERTA K THE ESTATE OF	\$4,684.00	
064-270-032-000	PETERSON JAMES	\$49,288.00	
003-610-021-000	PHILLIPS AARON W	\$35,382.00	
063-170-012-000	RAMESON TRENT A	\$14,244.00	
046-440-001-000	REECE JOHN S	\$87,500.00	
065-030-002-000	ROSALES RICARD SR ETAL	\$56,356.00	
061-020-036-000	SALVATORE AJA A	\$48,000.00	
013-250-012-530	SANTANA JOSE Z TRSTE	\$2,690.00	
013-250-013-510	SANTANA JOSE Z TRSTE	\$2,723.00	
007-140-025-000	TAMBASCO ANTHONY II ADMIN	\$11,785.00	
054-270-005-000	TSI-AKIM MAIDU	\$3,135.00	
005-396-030-000	TSI-AKIM MAIDU CORPORATION THE	\$3,790.00	
025-500-018-000	WOODARD CASEY	\$9,263.00	



061-130-020-000  
CAMPBELL MARY J TRSTE EST OF

**ASSESSOR'S PARCEL MAP**  
 This map is prepared for assessment purposes only. It is not intended to show the location of any boundary lines, easements, or other interests in land. It is not a substitute for a survey or other legal document. It is not to be used for any purpose other than assessment.

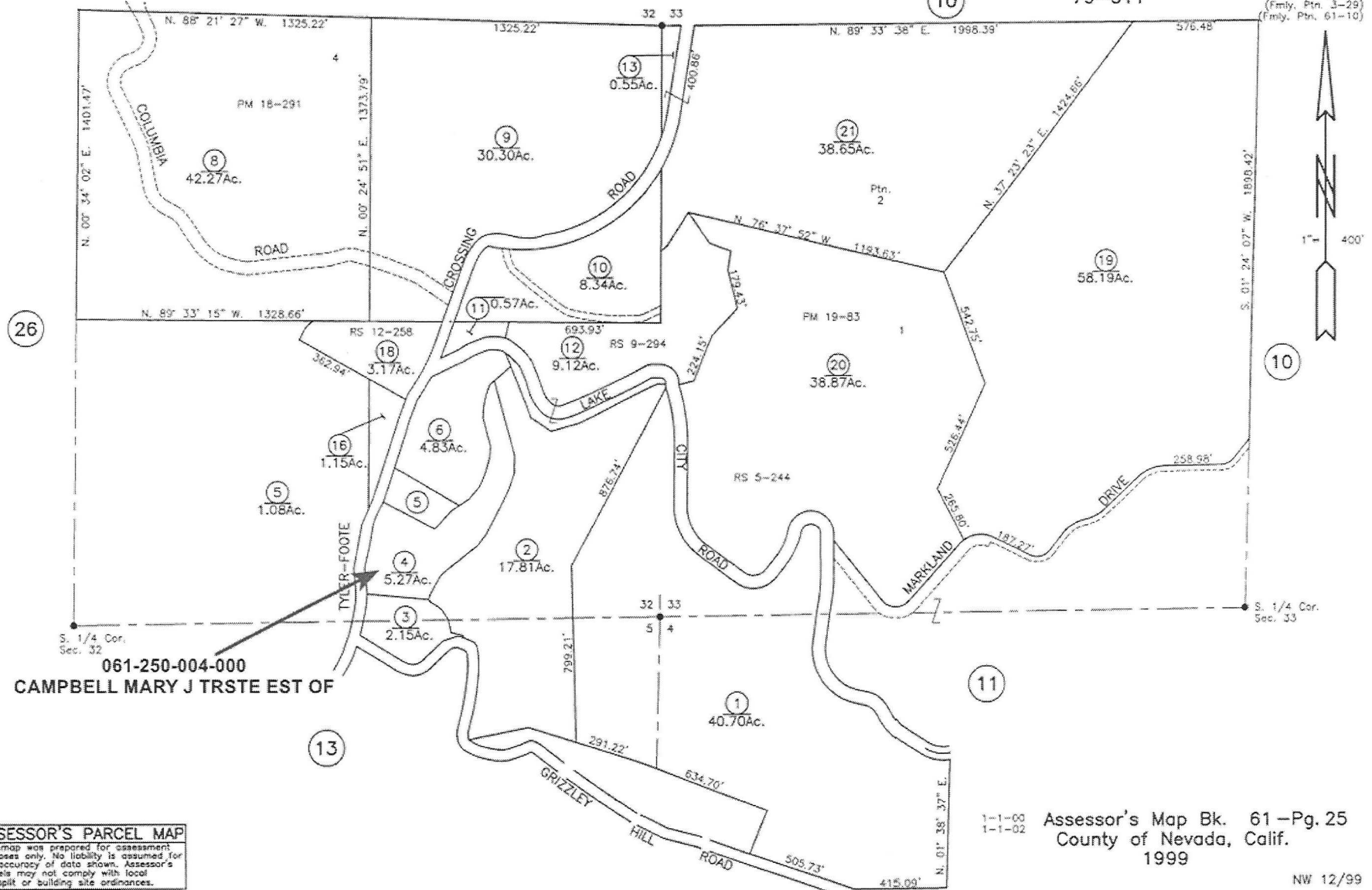
Bk. 62 — 5

1-1-02  
1-1-05  
Assessor's Map Bk. 61 -Pg. 13  
County of Nevada, Calif.  
2001  
LAST UPDATE: 10-24-11  
NW 8/01

PTN. SEC'S 4-5, T. 17 N., R. 9 E., 32 & 33, T. 18 N., R. 9 E., M.D.B. & M.

Tax Area Code  
79-011

61-25  
(Fmly. Ptn. 3-29)  
(Fmly. Ptn. 61-10)



061-250-004-000  
CAMPBELL MARY J TRSTE EST OF

**ASSESSOR'S PARCEL MAP**  
 This map was prepared for assessment purposes only. No liability is assumed for the accuracy of data shown. Assessor's parcels may not comply with local lot-split or building site ordinances.

1-1-00  
1-1-02

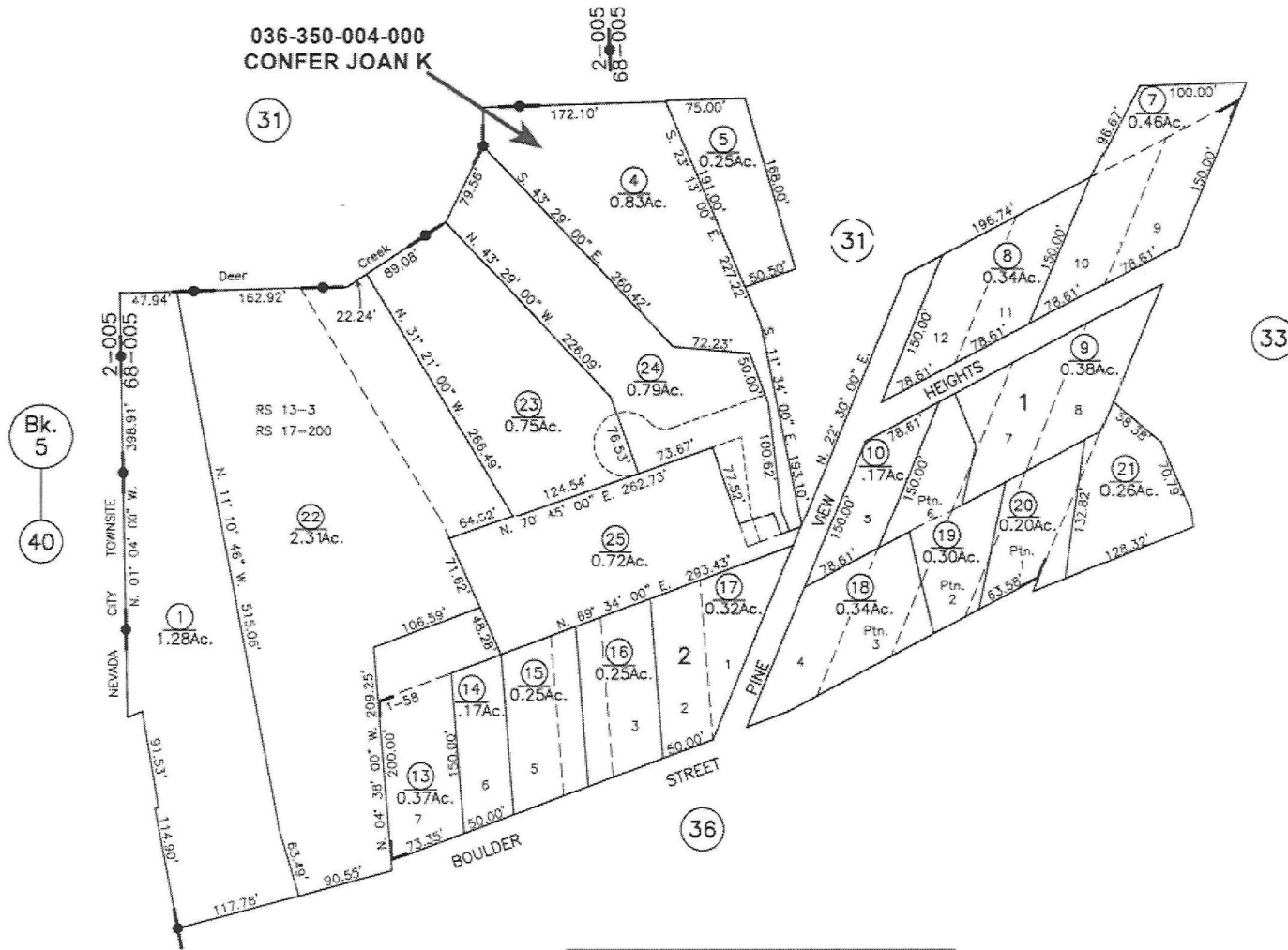
Assessor's Map Bk. 61-Pg. 25  
County of Nevada, Calif.  
1999

NW 12/99

PTN. S.E. 1/4 SEC. 7, T. 16 N., R. 9 E., M.D.B. & M.

Tax Area Code  
68-005

36-35  
(Fmly. Ptn. 6-10)



Bk. 5  
40

PINE VIEW HEIGHTS SUB. Bk. 1, Pg. 58

**ASSESSOR'S PARCEL MAP NOTICE**  
 This map was prepared for assessment purposes only. No liability is assumed for the accuracy of data shown. Assessor's parcels may not comply with local lot-split or building site ordinances. Assessor's block numbers shown in ellipses; parcel numbers are shown in circles. All distances on curved lines are chord measurements.

1-1-05  
1-1-08  
1-1-23

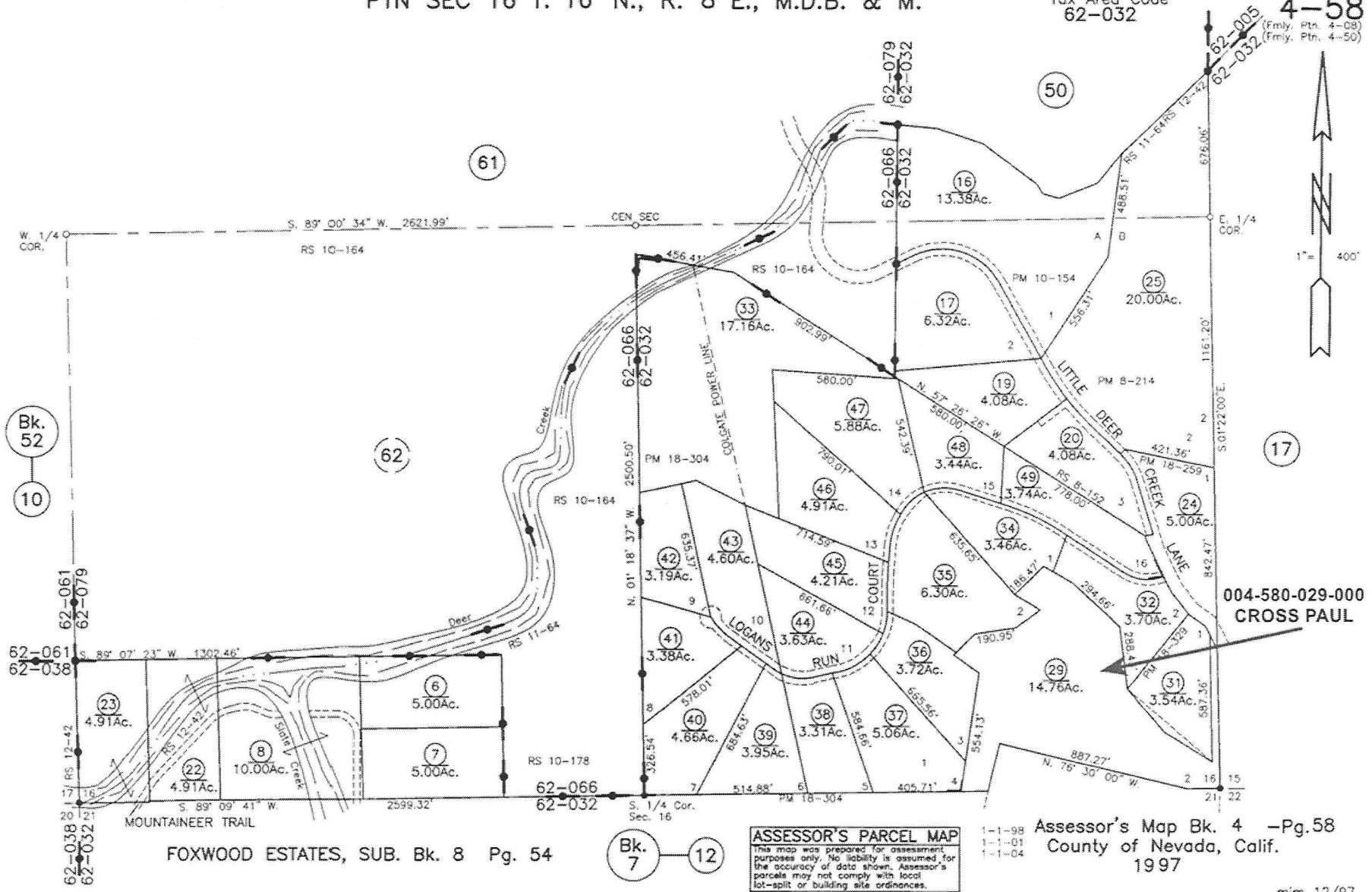
Assessor's Map Bk. 36-Pg. 35  
County of Nevada, Calif.  
2004

LAST UPDATE: 10-19-22 EL NW 12/04

PTN SEC 16 T. 16 N., R. 8 E., M.D.B. & M.

Tax Area Code  
62-032

4-58  
(Fmly. Ptn. 4-08)  
(Fmly. Ptn. 4-50)



FOXWOOD ESTATES, SUB. Bk. 8 Pg. 54

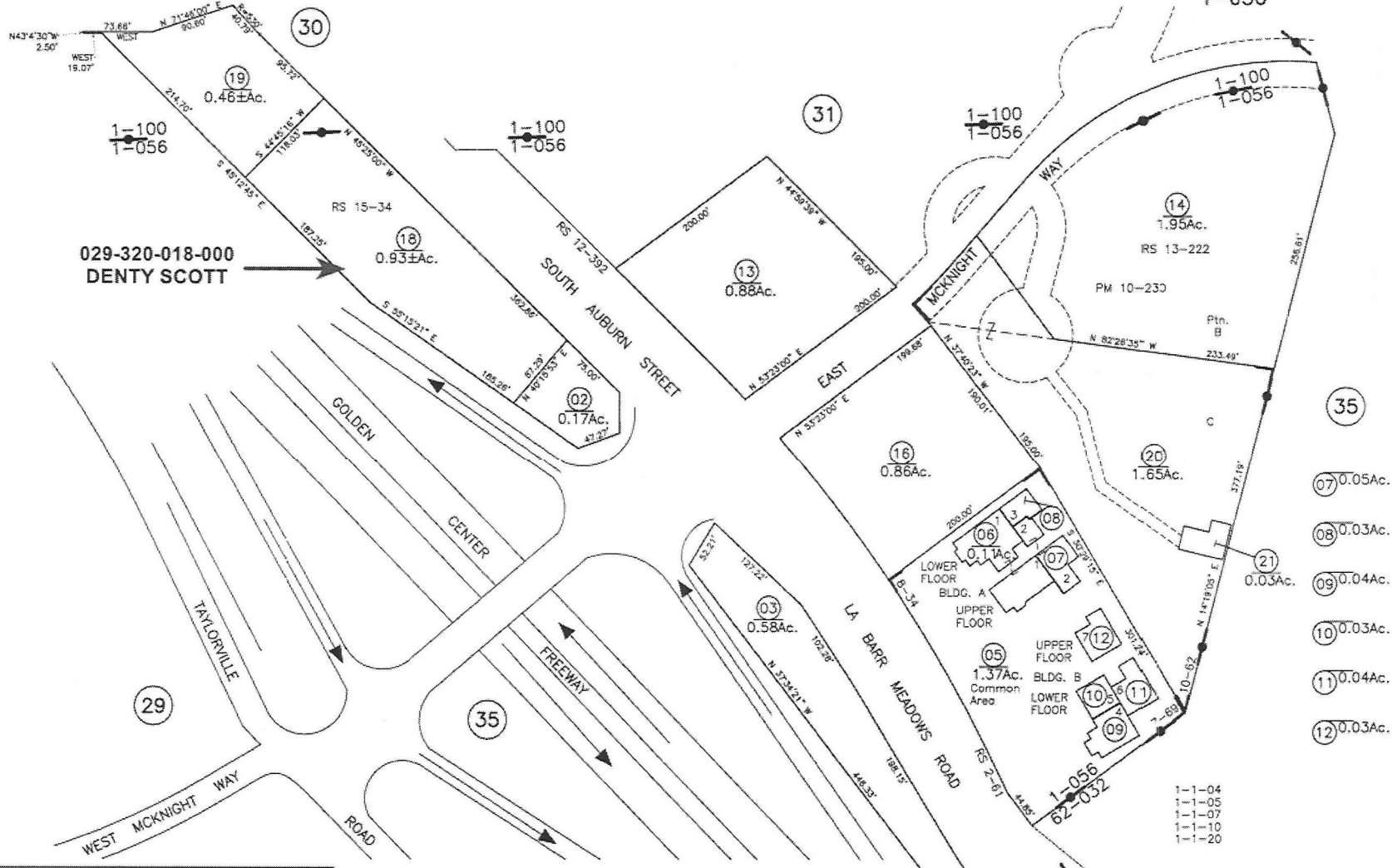
**ASSESSOR'S PARCEL MAP**  
This map was prepared for assessment purposes only. No liability is assumed for the accuracy of data shown. Assessor's parcels may not comply with local lot-split or building site ordinances.

1-1-98 Assessor's Map Bk. 4 -Pg.58  
1-1-01 County of Nevada, Calif.  
1-1-04 1997

PTN. S.E. 1/4 SEC. 34, T. 16 N., R. 8 E., M.D.B. & M.

Tax Area Code  
1-056

29-32  
(Emby. 8-72)



029-320-018-000  
DENTY SCOTT

**ASSESSOR'S PARCEL MAP NOTICE**  
This map was prepared for assessment purposes only. No liability is assumed for the accuracy of data shown. Assessor's parcels may not comply with local lot-split or building site ordinances. Assessor's block numbers shown in ellipses; parcel numbers are shown in circles. All distances on curved lines are chord measurements.

GRASS VALLEY ANNEX No. 25, R.S. Bk. 2, Pg. 61  
GRASS VALLEY ANNEX No. 57, R.S. Bk. 7, Pg. 69  
GRASS VALLEY ANNEX No. 71, R.S. Bk. 10, Pg. 62  
LA BARR MEADOW'S 901 CONDO'S SUB. Bk. 8, Pg. 34

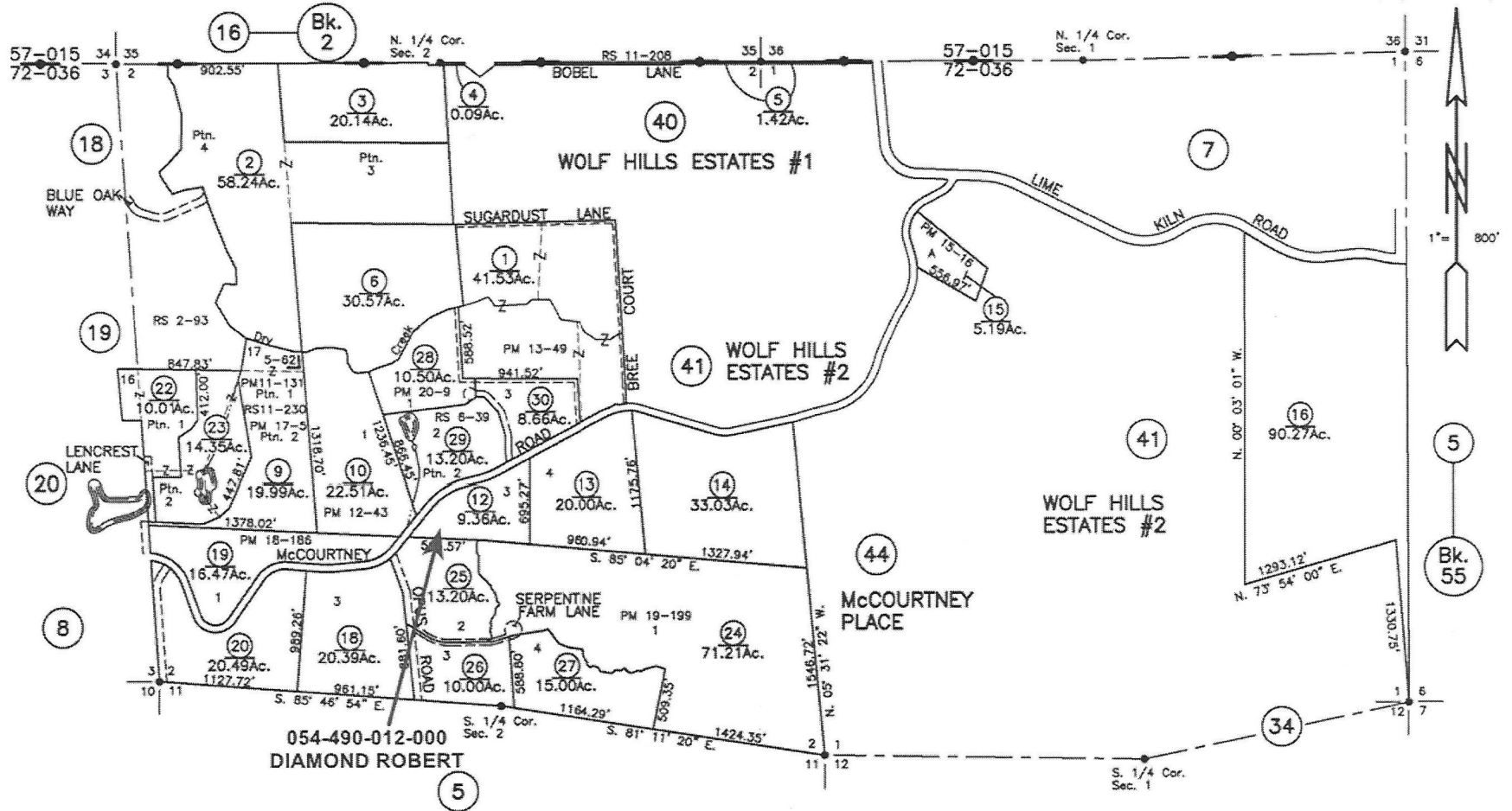
Assessor's Map Bk. 29-Pg. 32  
County of Nevada, Calif.  
2003  
LAST UPDATE: 5-27-22 NW 5/03



PTN. SEC'S 1, 2, & 3, T.14 N., R. 7 E., M.D.B. & M.

Tax Area Code  
72-036

**54-49**  
(Fmly. Ptn. 2-18)  
(Fmly. Ptn. 54-05)



054-490-012-000  
DIAMOND ROBERT

**ASSESSOR'S PARCEL MAP**  
This map was prepared for assessment purposes only. No liability is assumed for the accuracy of data shown. Assessor's parcels may not comply with local lot-split or building site ordinances.

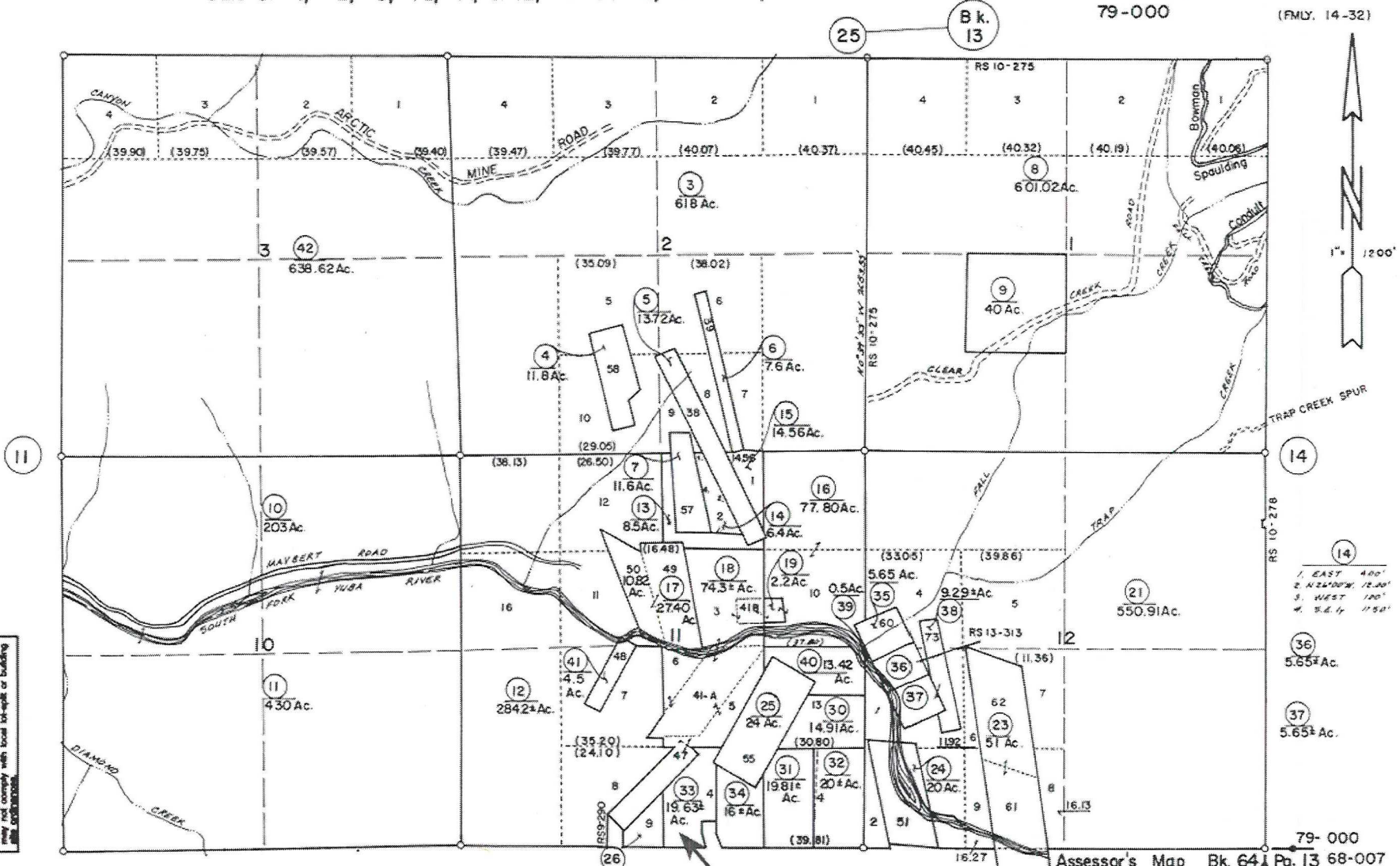
IRON MOUNTAIN ESTATES SUB. Bk. 5, Pg. 62

Assessor's Map Bk. 54 -Pg. 49  
County of Nevada, Calif.  
2000  
LAST UPDATE: 4-25-13 NW 12/00

SEC'S. 1, 2, 3, 10, 11, & 12, T. 17 N., R. 11 E., M.D.B. & M.

Tax Area Code  
79-000

64-13  
(FMLY. 14-32)



**ASSESSOR'S PARCEL MAP**  
 This map was prepared for assessment. The accuracy of the boundaries shown here is the responsibility of the Assessor. Assessor's parcels may not comply with local lot-split or building line ordinances.

064-130-033-000  
**DLUHOŠ EMRE & ANN**

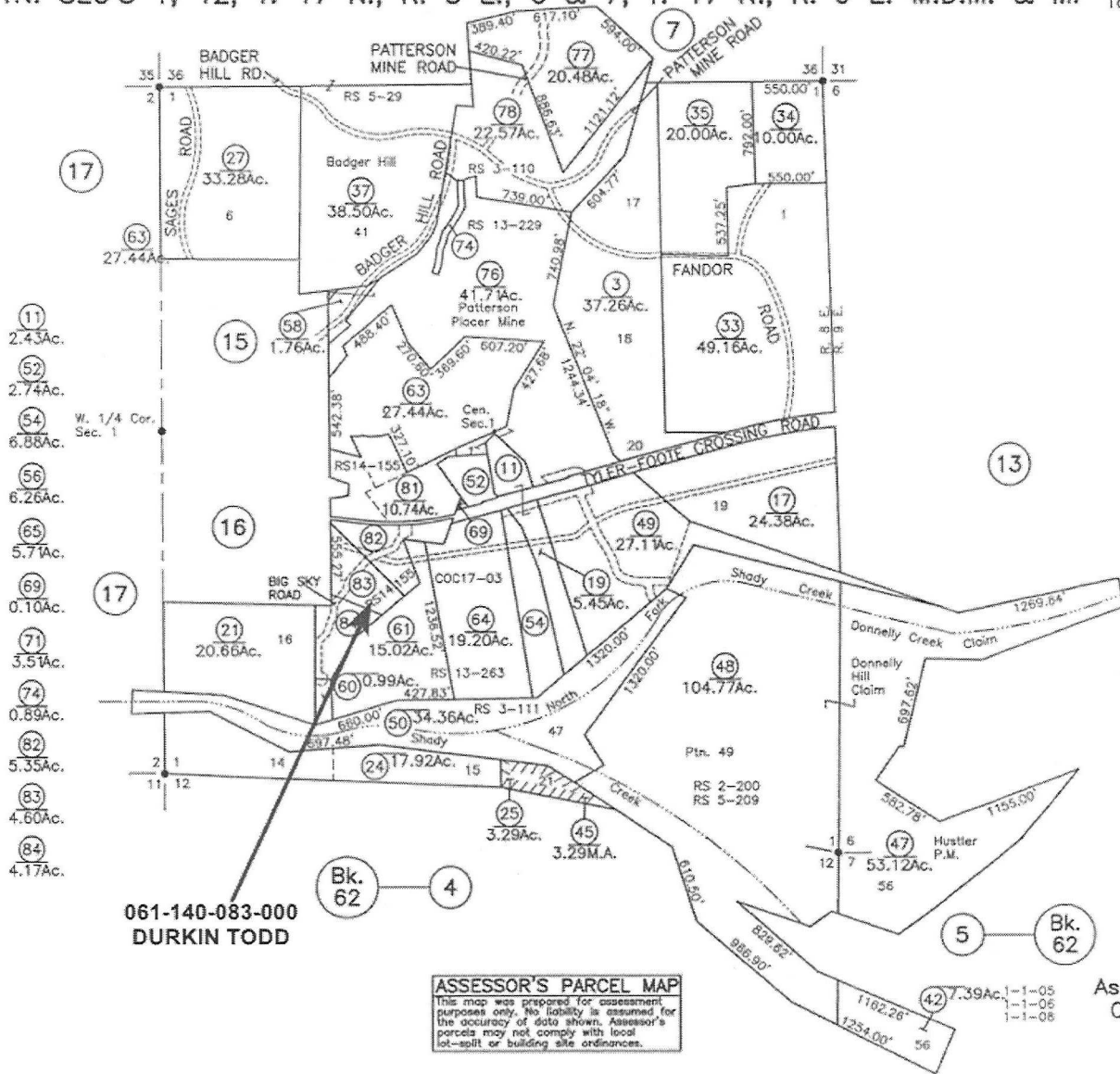
Assessor's Map Bk. 64, Pg. 13 68-007  
 County of Nevada, Calif.

1962  
 3-1-67 3-4-62  
 3-1-66 1-1-67  
 3-4-65 1-1-66

4-81

PTN. SEC'S 1, 12, T. 17 N., R. 8 E., 6 & 7, T. 17 N., R. 9 E. M.D.M. & M. Tax Area Code 79-011

61-14  
(Fmly. Ptn. 3-14)



**ASSESSOR'S PARCEL MAP**  
 This map was prepared for assessment purposes only. No liability is assumed for the accuracy of data shown. Assessor's parcels may not comply with local lot-split or building site ordinances.

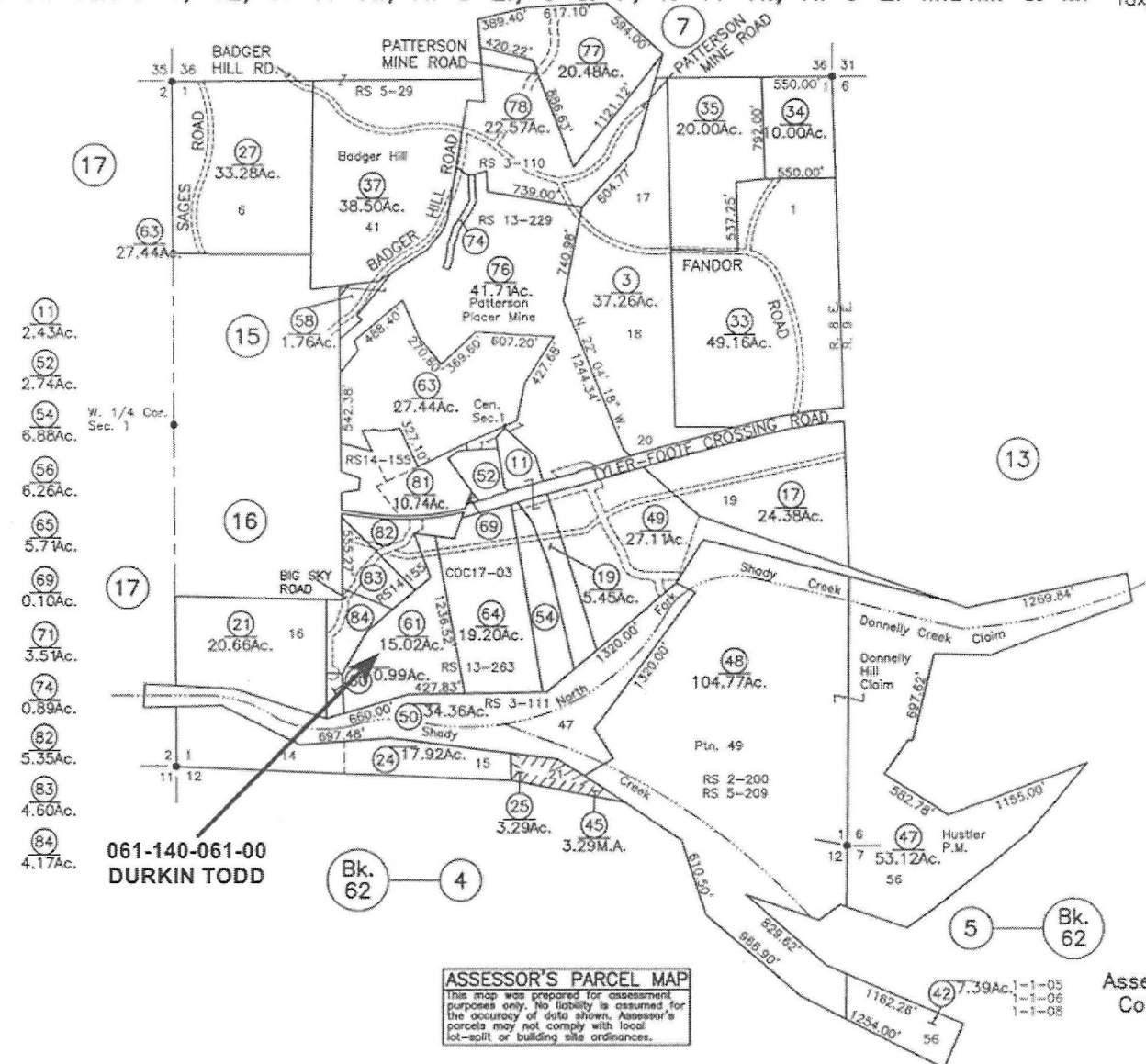
Assessor's Map Bk. 61 -Pg. 14  
 County of Nevada, Calif.  
 2004

LAST UPDATE: 7-11-17 TM 07/17

PTN. SEC'S 1, 12, T. 17 N., R. 8 E., 6 & 7, T. 17 N., R. 9 E. M.D.M. & M.

Tax Area Code  
79-011

61-14  
(Emly. Ptn. 3-14)



- (11) 2.43Ac.
- (52) 2.74Ac.
- (54) 6.88Ac.
- (56) 6.26Ac.
- (65) 5.71Ac.
- (69) 0.10Ac.
- (71) 3.51Ac.
- (74) 0.89Ac.
- (82) 5.35Ac.
- (83) 4.60Ac.
- (84) 4.17Ac.

061-140-061-00  
DURKIN TODD

Bk. 62 — 4

5 — Bk. 62

**ASSESSOR'S PARCEL MAP**  
This map was prepared for assessment purposes only. No liability is assumed for the accuracy of data shown. Assessor's parcels may not comply with local lot-split or building site ordinances.

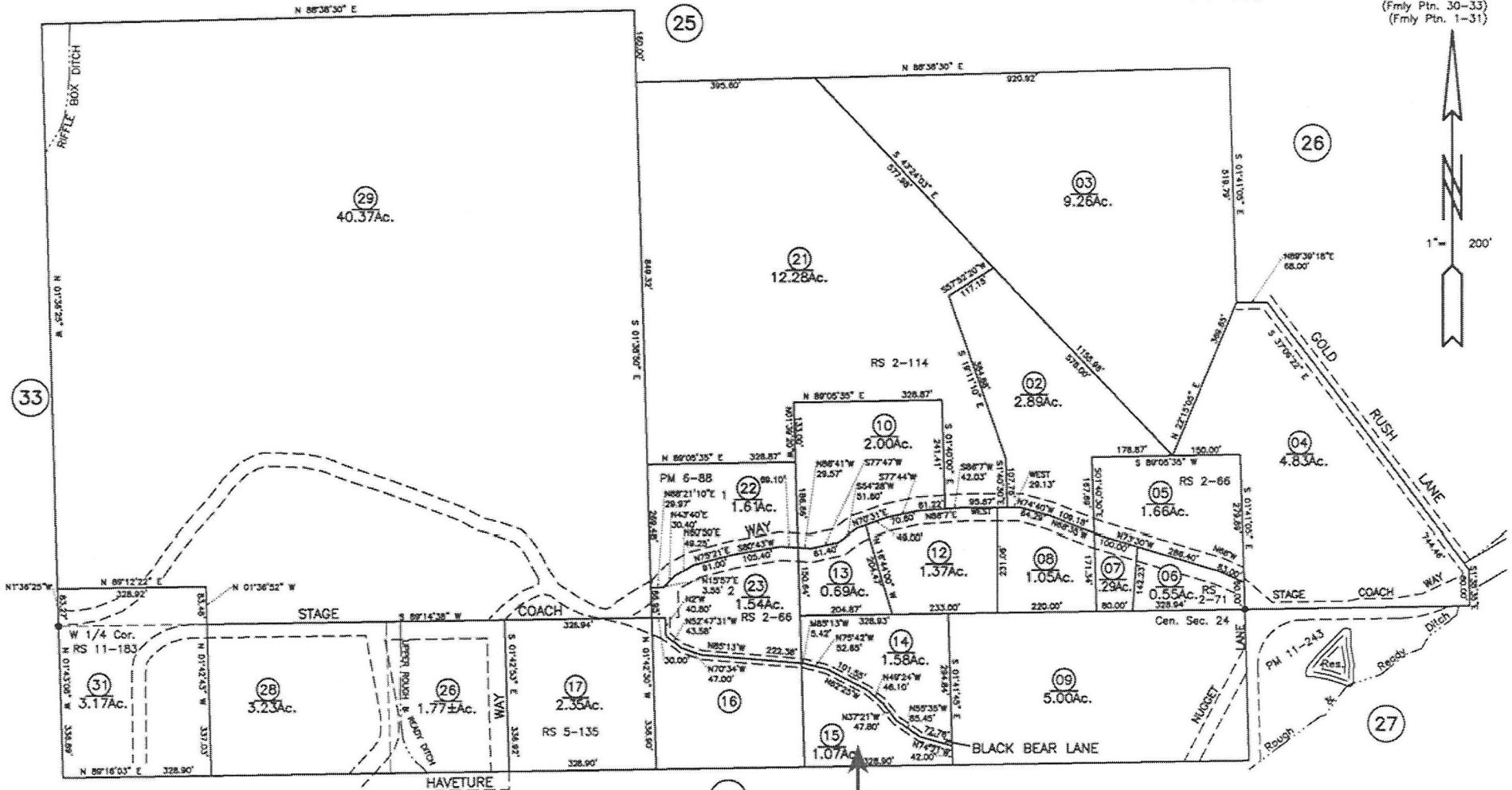
Assessor's Map Bk. 61 -Pg. 14  
County of Nevada, Calif.  
2004

LAST UPDATE: 7-11-17 TM 07/17

PTN SEC 24, T. 16 N., R. 7 E., M.D.B. & M.

Tax Area Code  
74-002

52-31  
(Fmly Ptn. 30-33)  
(Fmly Ptn. 1-31)



**ASSESSOR'S PARCEL MAP**  
This map was prepared for assessment purposes only. No liability is assumed for the accuracy of data shown. Assessor's parcels may not comply with local lot-split or building site ordinances.

052-310-015-000  
EMRICH DEBORA

Assessor's Map Bk. 52 -Pg.31  
County of Nevada, Calif.  
1962

3-1-83	3-1-87	3-1-92
3-1-84	3-1-88	3-1-95
3-1-85	3-1-89	1-1-98

LAST UPDATE: 1-1-98

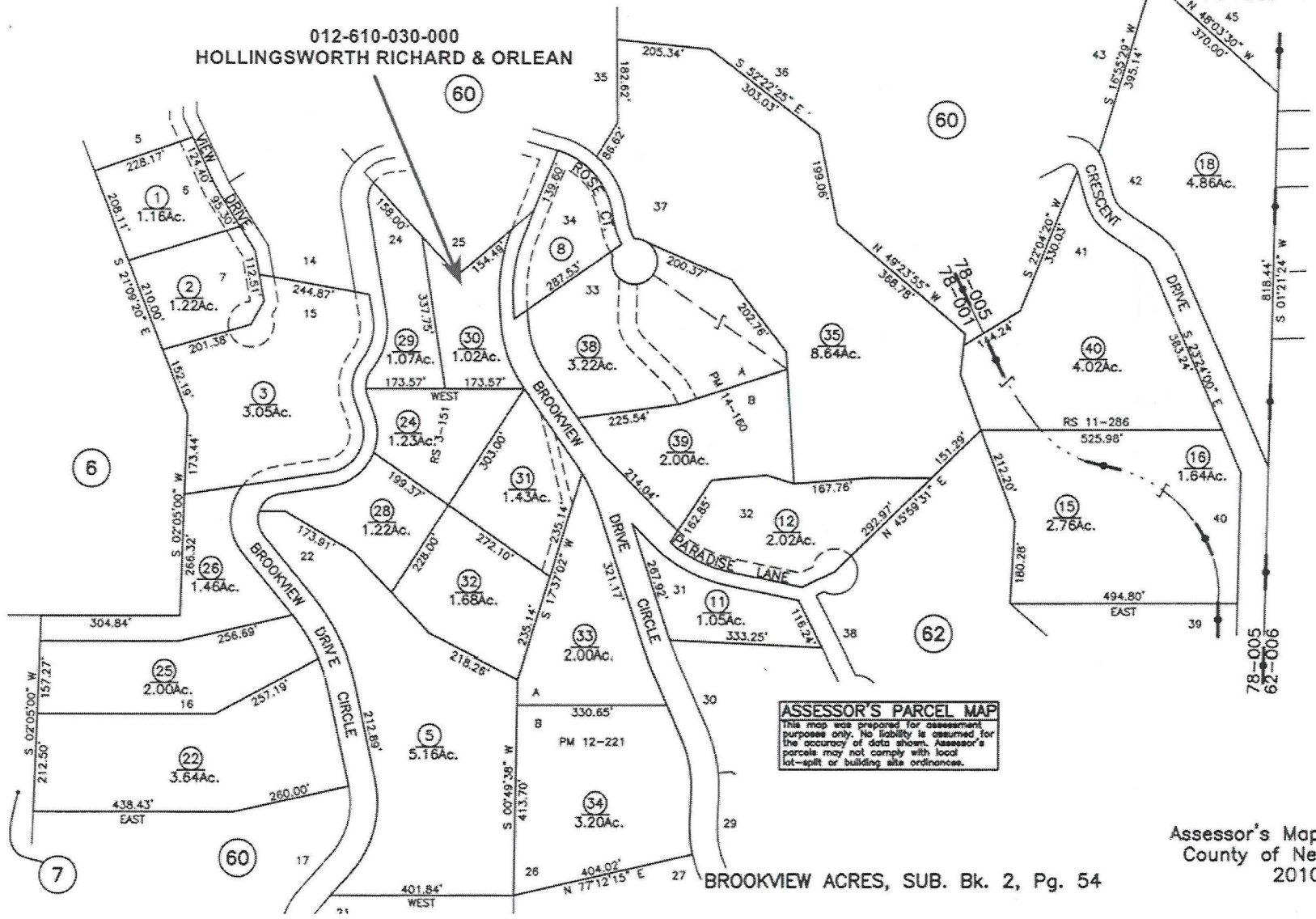
AAG 6/13

PTN. N.W. 1/4 SEC. 6, T. 15 N., R. 9 E., M.D.B. & M.

Tax Area Code  
 78-001  
 78-005

12-61  
 (Fmly. Ptn. 12-06)

012-610-030-000  
 HOLLINGSWORTH RICHARD & ORLEAN

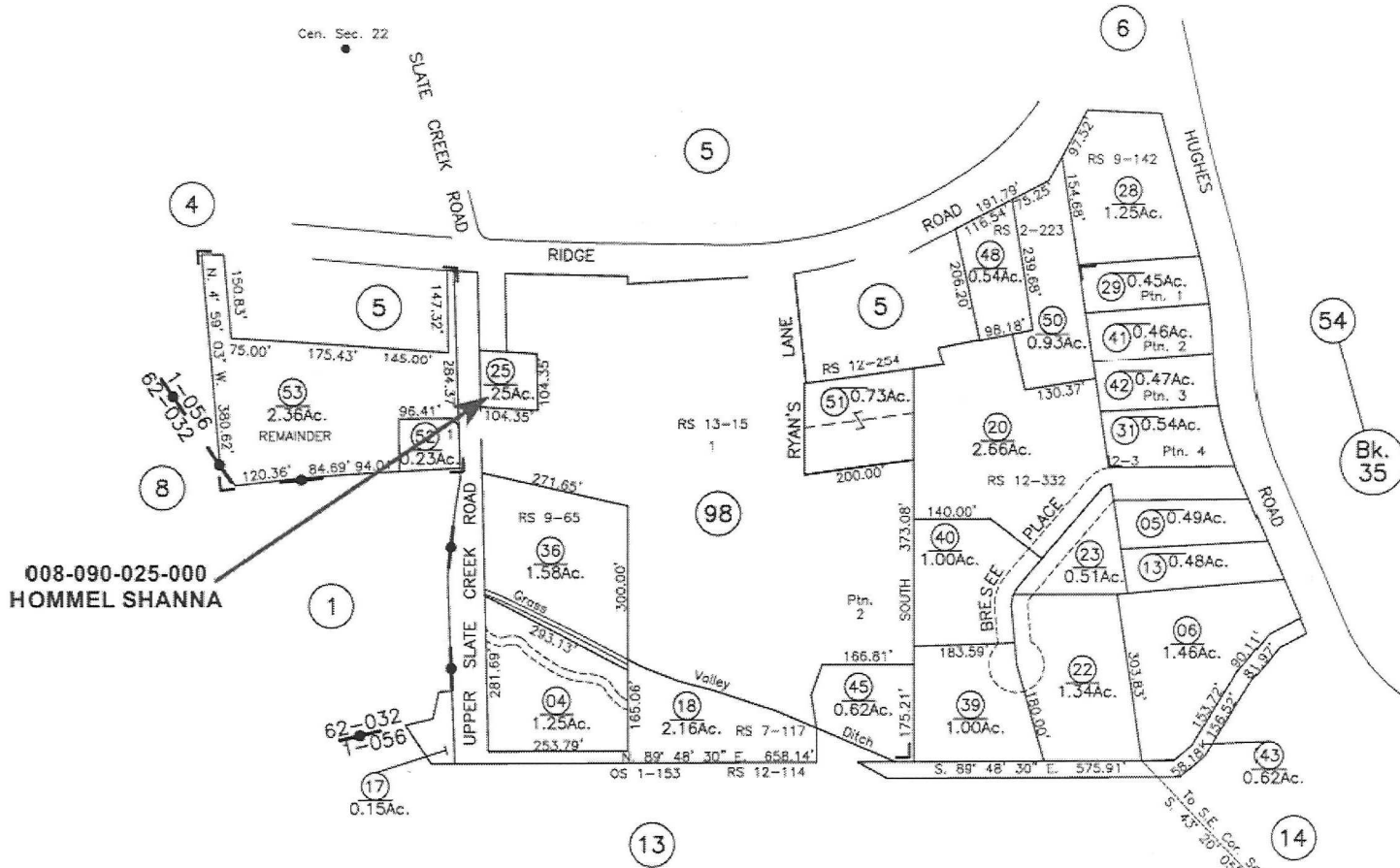


**ASSESSOR'S PARCEL MAP**  
 This map was prepared for assessment purposes only. No liability is assumed for the accuracy of data shown. Assessor's parcels may not comply with local lot-split or building site ordinances.

Assessor's Map Bk. 12-Pg. 61  
 County of Nevada, Calif.  
 2010

BROOKVIEW ACRES, SUB. Bk. 2, Pg. 54

RLW 06/10



GRASS VALLEY ANNEX 9 O.S. Bk. 1, Pg. 153  
 GRASS VALLEY ANNEX, 98-05 R.S. Bk. 12, Pg. 114  
 SUN VIEW SUB. Bk. 2, Pg. 3  
 RUSTIC WOODS PHASE 1 SUB. Bk. 9, Pg. 27

**ASSESSOR'S PARCEL MAP NOTICE**  
 This map was prepared for assessment purposes only. No liability is assumed for the accuracy of data shown. Assessor's parcels may not comply with local lot-split or building site ordinances. Assessor's block numbers shown in ellipses; parcel numbers are shown in circles. All distances on curved lines are chord measurements.

- 1-1-02
- 1-1-03
- 1-1-05
- 1-1-06
- 1-1-07
- 1-1-10
- 1-1-22
- 1-1-23

Assessor's Map Bk. 8 -Pg.09  
 County of Nevada, Calif.  
 2001

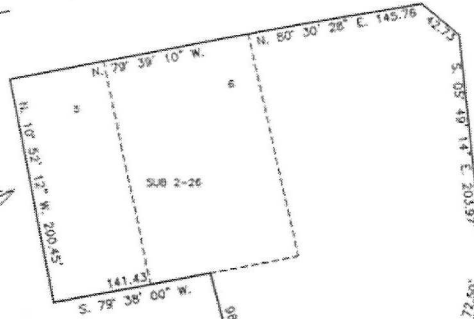
PTN. S. 1/2 SEC. 20, T. 16 N., R. 9 E., M.D.B. & M.

Tax Area Code  
62-032

37-35  
(Fmly. 6-71)  
(Fmly. Ptn. 6-32)



25



037-350-007-000  
HOSKINS SAMANTHA & TERRY

33

**ASSESSOR'S PARCEL MAP**  
This map was prepared for assessment purposes only. No liability is assumed for the accuracy of data shown. Assessor's parcels may not comply with local lot-split or building site ordinances.

SHANGRI-LA SUB. Bk. 2, Pg. 26

10  
6.11Ac.

46

Bk. 6  
40

Assessor's Map Bk. 37 -Pg. 35  
County of Nevada, Calif.  
1996

LAST UPDATE: 11-16-14

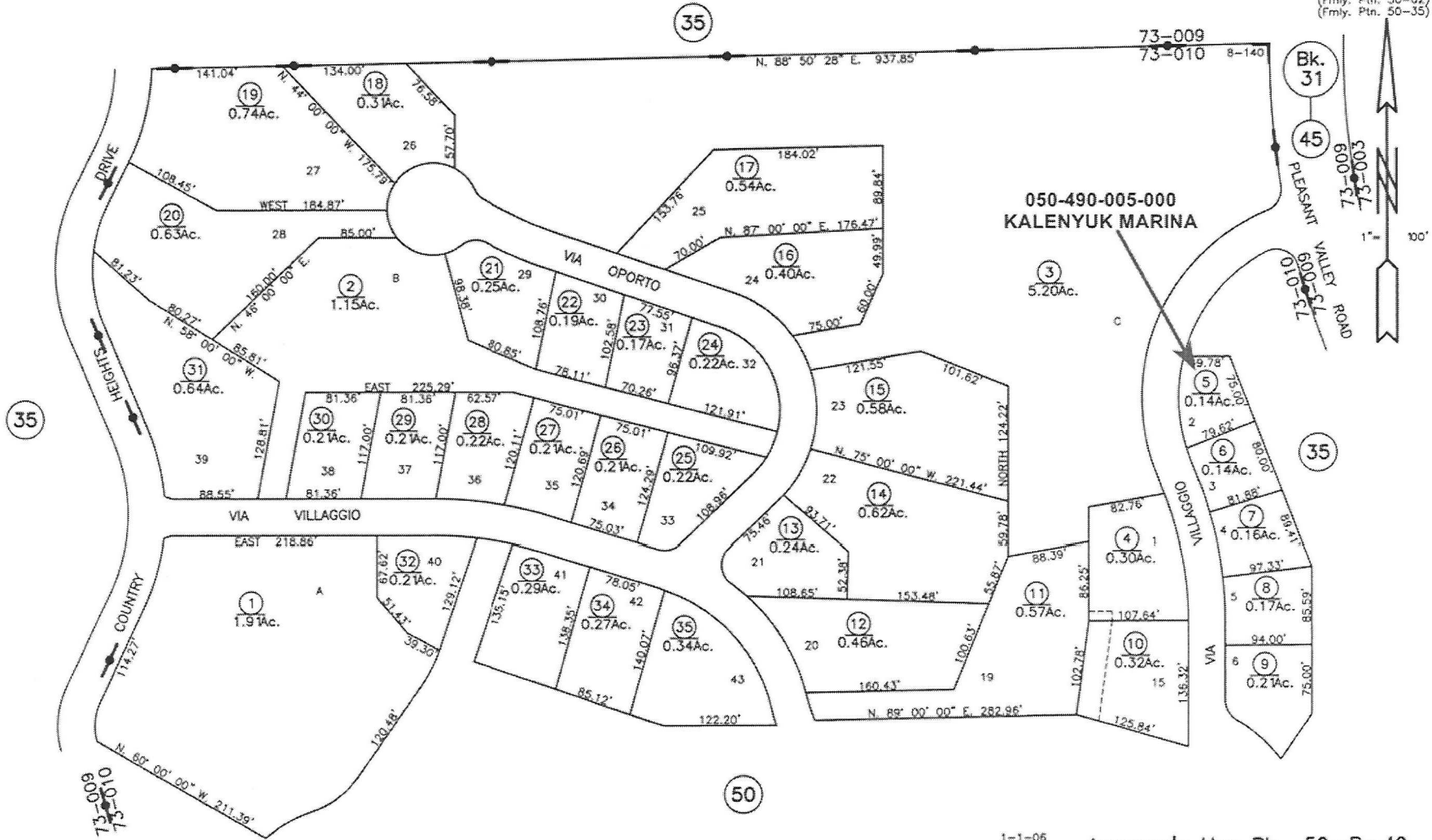
TM 11/14



PTN. SEC'S 17 & 20, T. 16 N., R. 7 E., M.D.B. & M.

Tax Area Code  
73-010

50-49  
(Fmly. Ptn. 1-2)  
(Fmly. Ptn. 50-02)  
(Fmly. Ptn. 50-35)



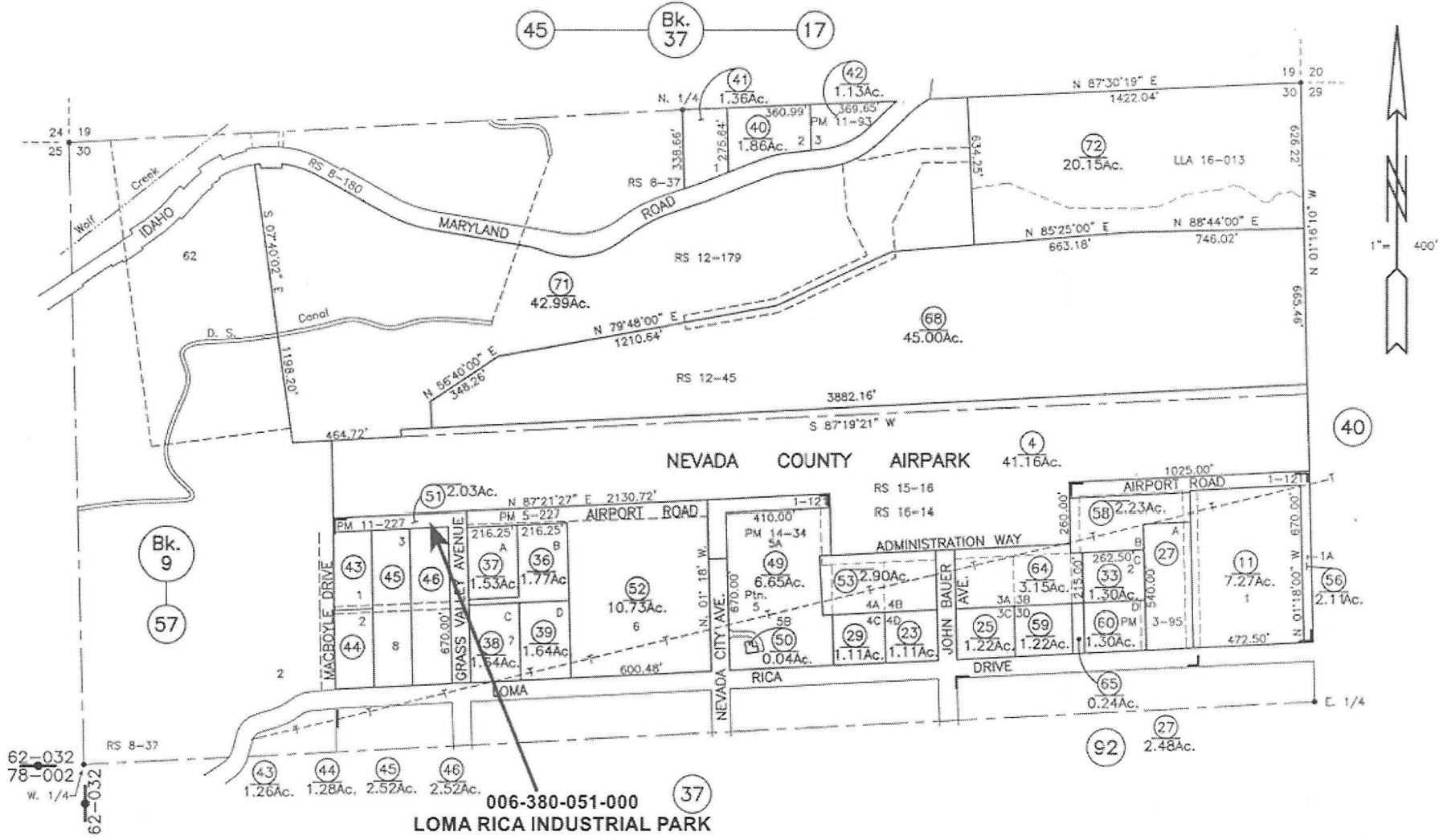
**ASSESSOR'S PARCEL MAP**  
 This map was prepared for assessment purposes only. No liability is assumed for the accuracy of data shown. Assessor's parcels may not comply with local lot-split or building site ordinances.

1-1-06  
1-1-08

Assessor's Map Bk. 50 -Pg. 49  
County of Nevada, Calif.  
2005

VILLAGGIO DI VIGNETO SUB. Bk. 8, Pg. 140

NW 12/05



LOMA RICA INDUSTRIAL PARK SUB. Bk. 1, Pg. 121

006-380-051-000 (37)  
LOMA RICA INDUSTRIAL PARK

**ASSESSOR'S PARCEL MAP**  
 This map was prepared for assessment purposes only. No liability is assumed for the accuracy of data shown. Assessor's parcels may not comply with local lot-split or building site ordinances.

Assessor's Map Bk. 6 -Pg. 38  
County of Nevada, Calif.  
1998

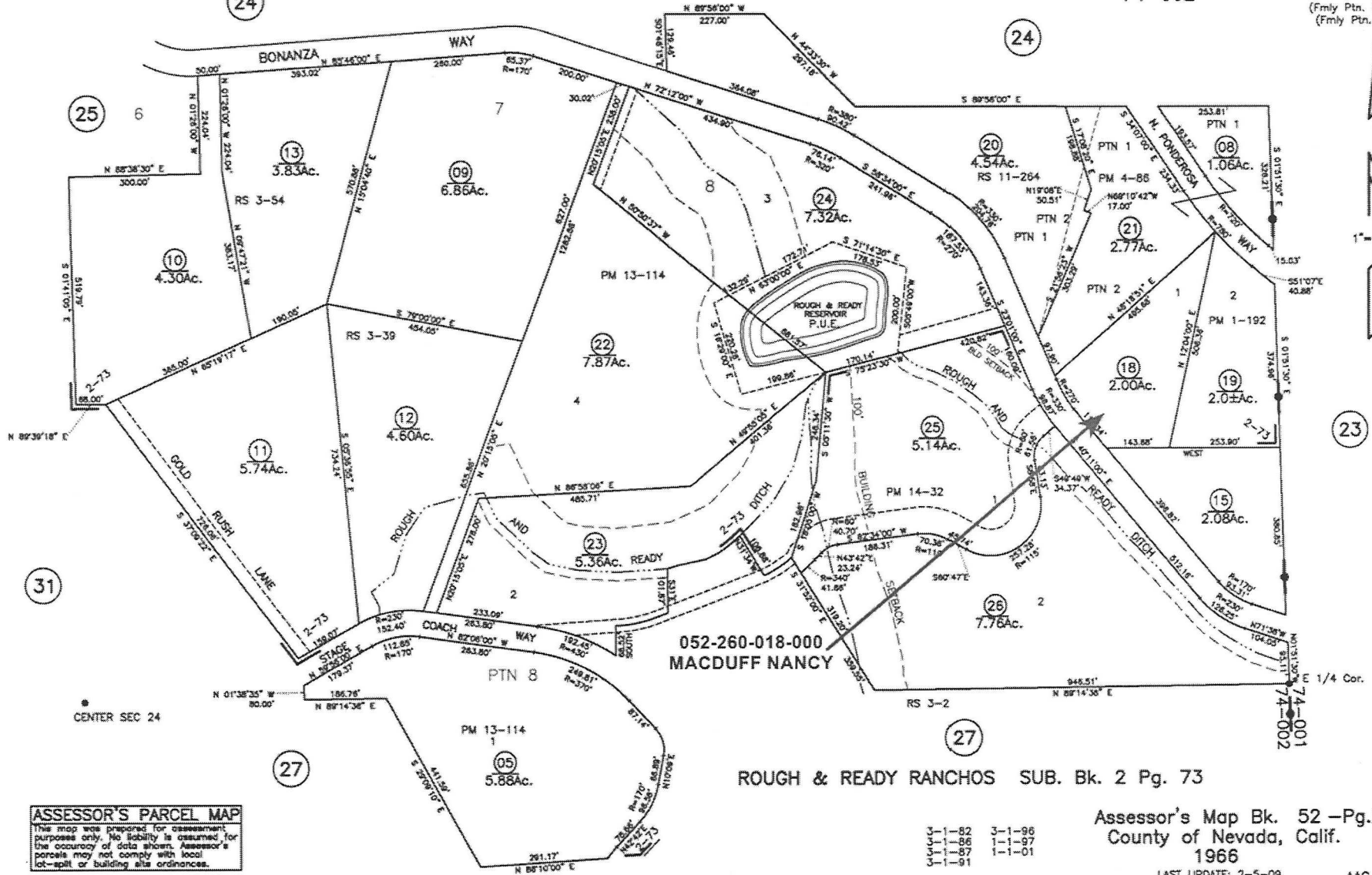
LAST UPDATE: 7-11-18

TM 9/17

PTN E1/2 SEC 24, T. 16 N., R. 7 E., M.D.B. & M.

Tax Area Code  
74-002

**52-26**  
(Fmly Ptn. 30-32)  
(Fmly Ptn. 1-63)



052-260-018-000  
MACDUFF NANCY

ROUGH & READY RANCHOS SUB. Bk. 2 Pg. 73

Assessor's Map Bk. 52 -Pg.26  
County of Nevada, Calif.  
1966  
LAST UPDATE: 2-5-09

3-1-82	3-1-86
3-1-86	1-1-97
3-1-87	1-1-01
3-1-91	

**ASSESSOR'S PARCEL MAP**  
This map was prepared for assessment purposes only. No liability is assumed for the accuracy of data shown. Assessor's parcels may not comply with local lot-split or building site ordinances.

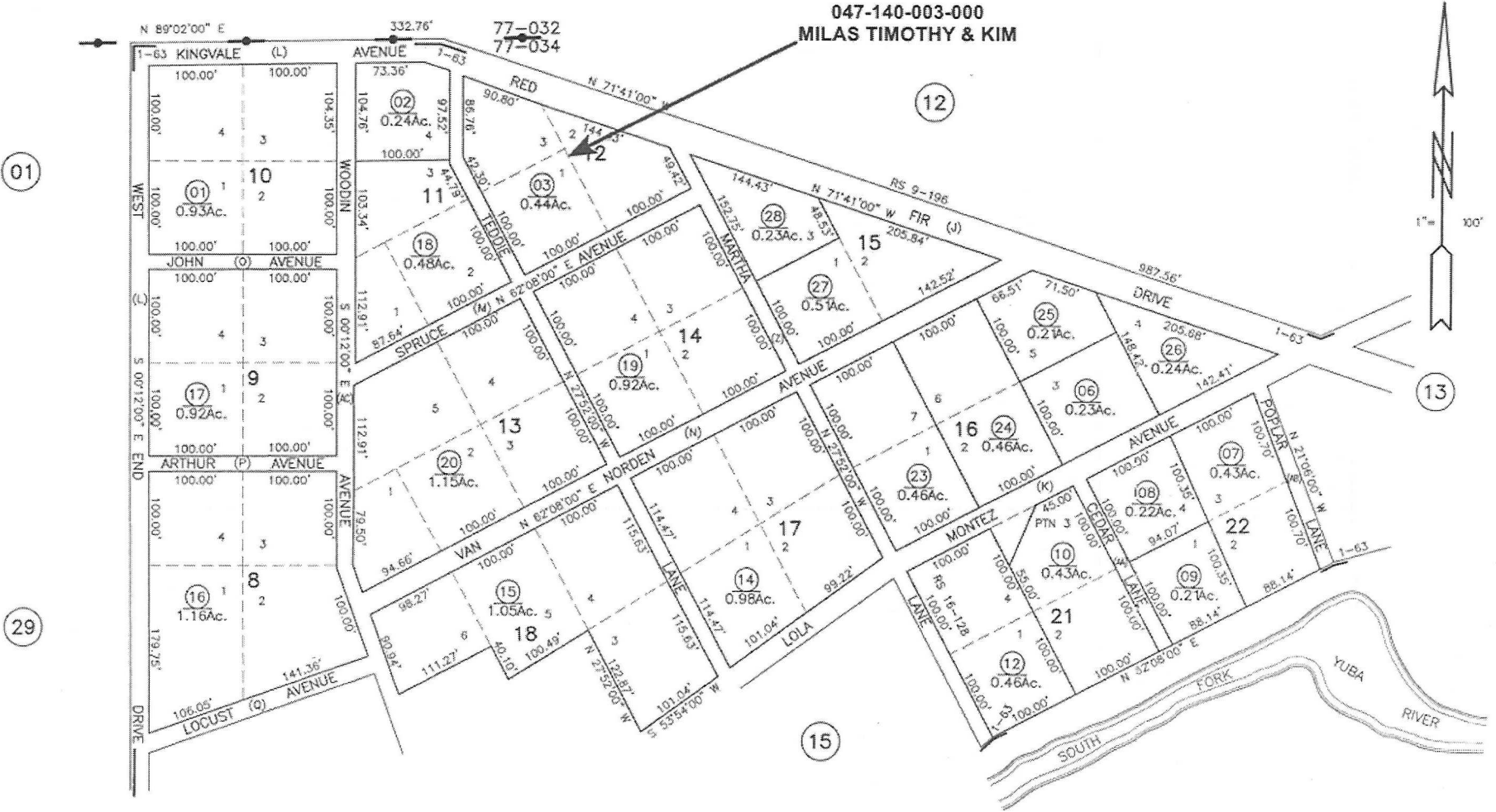
AAG 6/13

PTN N1/2 NE1/4 SW1/4 SEC 20, T. 17 N. R.14 E. M.D.B. & M

Tax Area Code  
77-034

47-14  
(Fmly 15-29)

047-140-003-000  
MILAS TIMOTHY & KIM



**ASSESSOR'S PARCEL MAP**  
 This map was prepared for assessment purposes only. No liability is assumed for the accuracy of data shown. Assessor's parcels may not comply with local lot-split or building site ordinances.

KINGVALE SUBDIVISION UNIT NO. 2, SUB Bk. 1 Pg. 63

Assessor's Map Bk. 47-Pg.14  
County of Nevada, Calif.  
1962

LAST UPDATE: 05-07-18

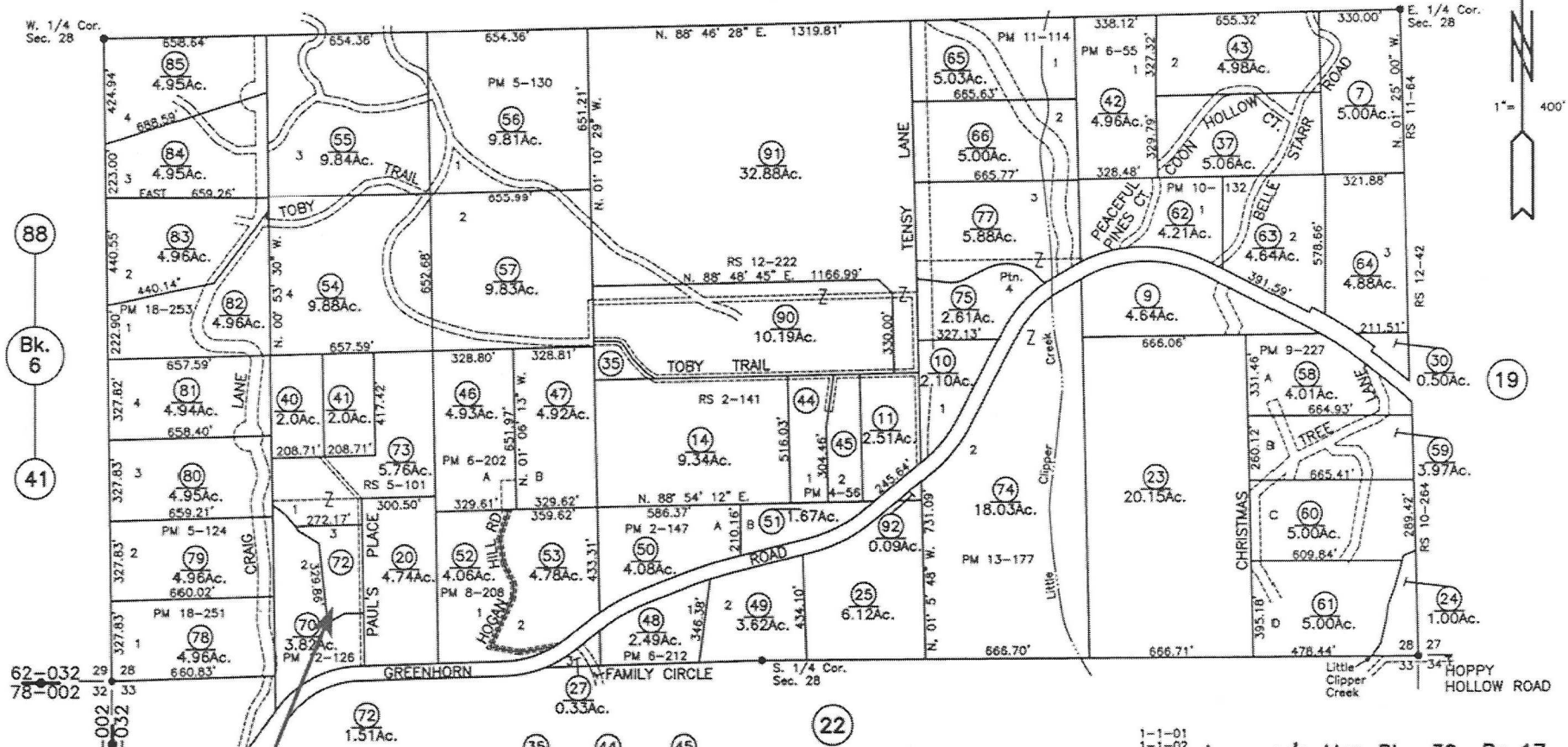
AAG 7/12

PTN SEC'S 28 & 33, T. 16 N., R. 9 E., M.D.B. & M.

Tax Area Code  
62-032

39-17  
(Fmly Ptn. 6-42)  
(Fmly. 36-58)

16



88  
Bk. 6  
41

62-032  
78-002  
78-002  
62-032

039-170-072-000  
MILLER KAREN

35 0.60Ac. 44 1.91Ac. 45 1.59Ac.

22

**ASSESSOR'S PARCEL MAP**  
 This map was prepared for assessment purposes only. No liability is assumed for the accuracy of data shown. Assessor's parcels may not comply with local lot-split or building site ordinances.

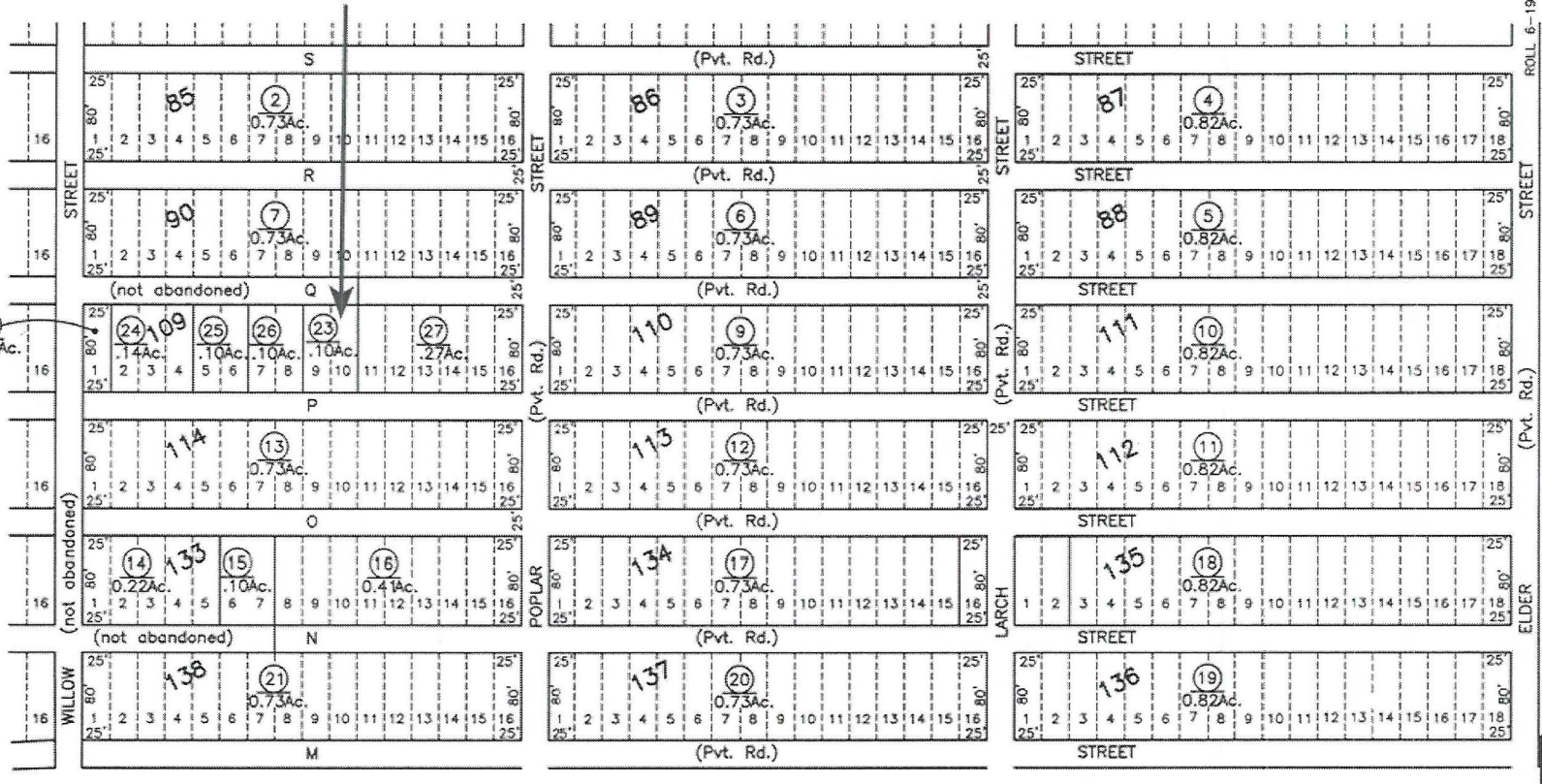
- 1-1-01
- 1-1-02
- 1-1-03
- 1-1-04
- 1-1-06
- 1-1-07

Assessor's Map Bk. 39 -Pg. 17  
 County of Nevada, Calif.  
 2000

NW 12/00

018-270-023-000  
MOLTO BENE LLC

(23)



(26)

(1)

NOTE: ROADS ABANDONED Doc. # 85-24554  
UNLESS OTHERWISE NOTED.

DONNER CAMP BUCKNAM TRACT, Roll 6, Pg. 19  
TRUCKEE INC. R.S. Bk. 11, Pg. 67

**ASSESSOR'S PARCEL MAP**  
This map was prepared for assessment purposes only. No liability is assumed for the accuracy of data shown. Assessor's parcels may not comply with local lot-split or building site ordinances.

1-1-08

Assessor's Map Bk. 18-Pg.27  
County of Nevada, Calif.  
2007

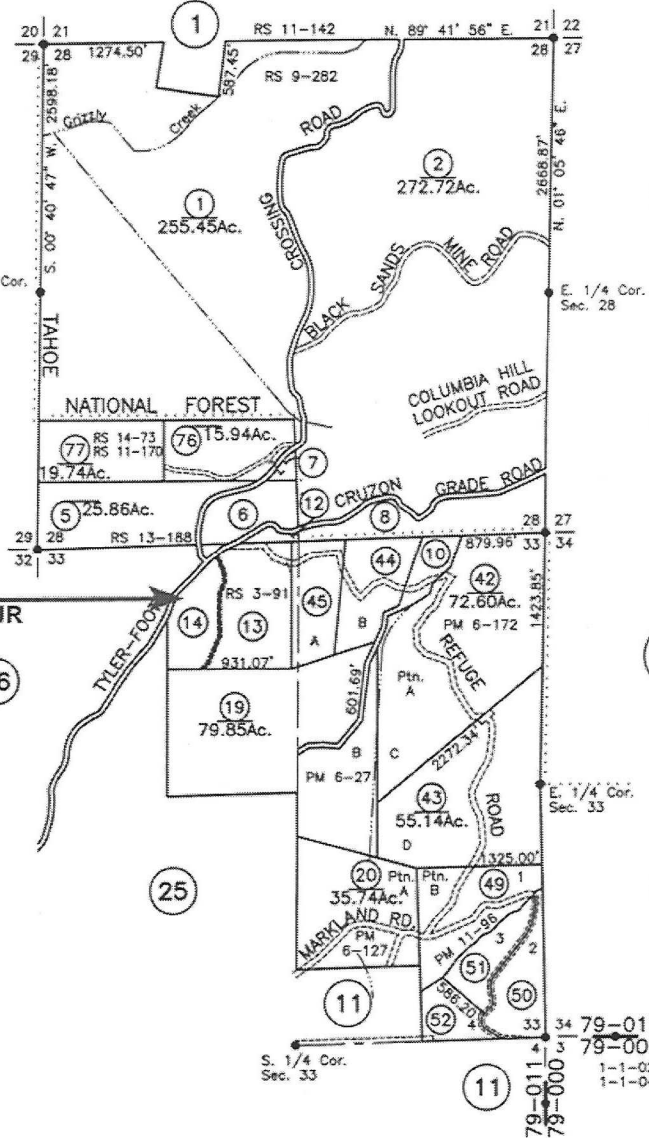
PTN. SEC'S 28 & 33, T. 18 N., R. 9 E., M.D.B. & M.

Tax Area Code  
79-011

61-10  
(Fmly. Ptn. 3-29)

- ⑥ 13.47Ac.
- ⑦ 4.42Ac.
- ⑧ 20.06Ac.
- ⑩ 8.44Ac.
- ⑫ 1.38Ac.
- ⑬ 23.49Ac.
- ⑭ 11.39Ac.
- ④④ 16.87Ac.
- ④⑤ 15.08Ac.
- ④⑨ 23.38Ac.
- ⑤① 13.55Ac.
- ⑤① 10.07Ac.
- ⑤② 8.00Ac.

061-100-014-000  
MORRIS JAMES E JR



- ⑥③
- ⑥⑥
- Bk. 3
- ③①



**ASSESSOR'S PARCEL MAP**  
This map was prepared for assessment purposes only. No liability is assumed for the accuracy of data shown. Assessor's parcels may not comply with local lot-split or building site ordinances.

Assessor's Map Bk. 61-Pg. 10  
County of Nevada, Calif.  
2001

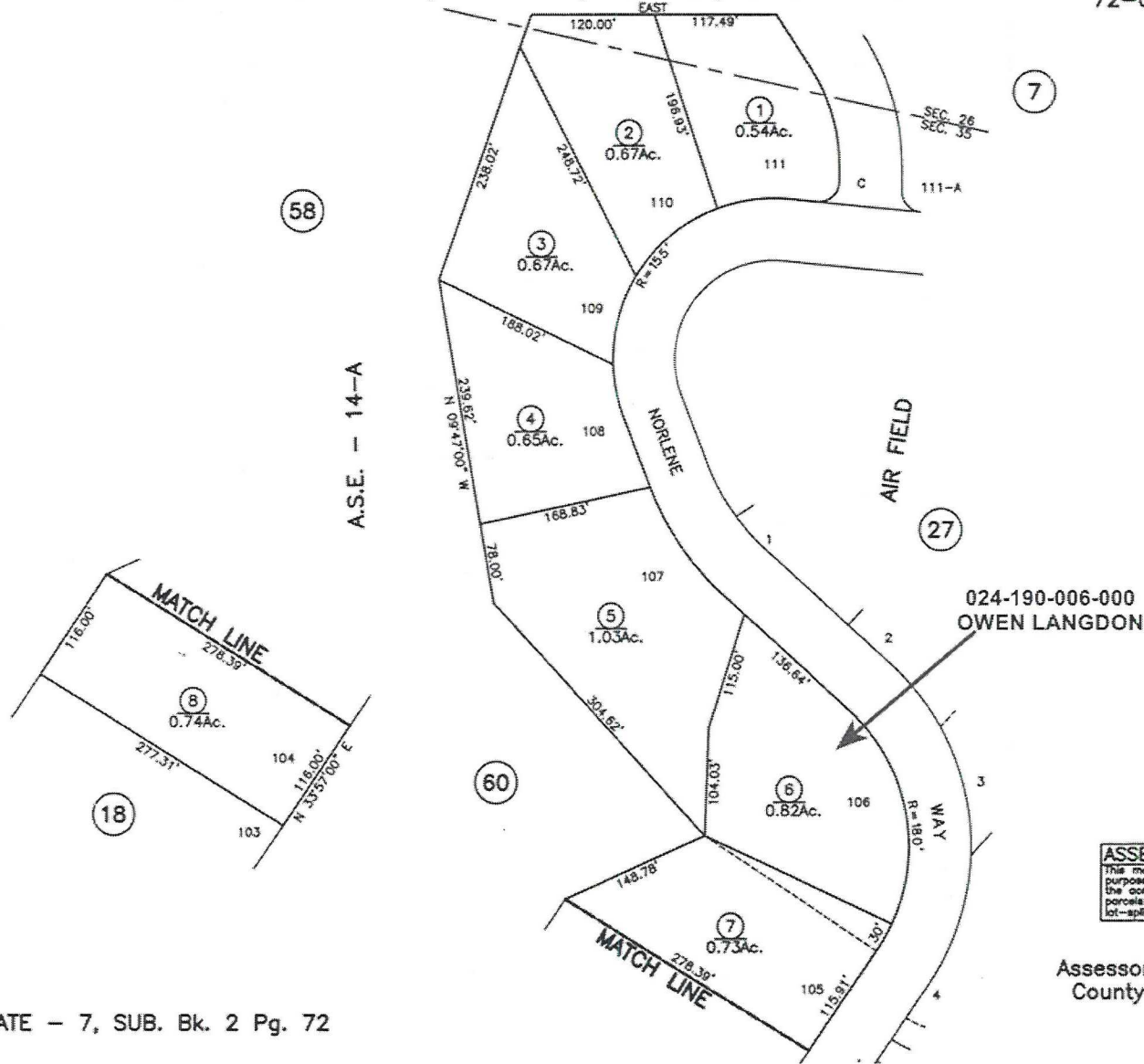
LAST UPDATE 12-30-08

NW 8/01

PTNS. SEC. 26 & 35, T. 15 N., R. 8 E., M.D.B. & M.

Tax Area Code  
72-001

24-19  
(Fmly. 20-19)



**ASSESSOR'S PARCEL MAP**  
 This map was prepared for assessment purposes only. No liability is assumed for the accuracy of data shown. Assessor's parcels may not comply with local lot-split or building site ordinances.

Assessor's Map Bk. 24 -Pg.19  
 County of Nevada, Calif.  
 2010

RLW 03/10

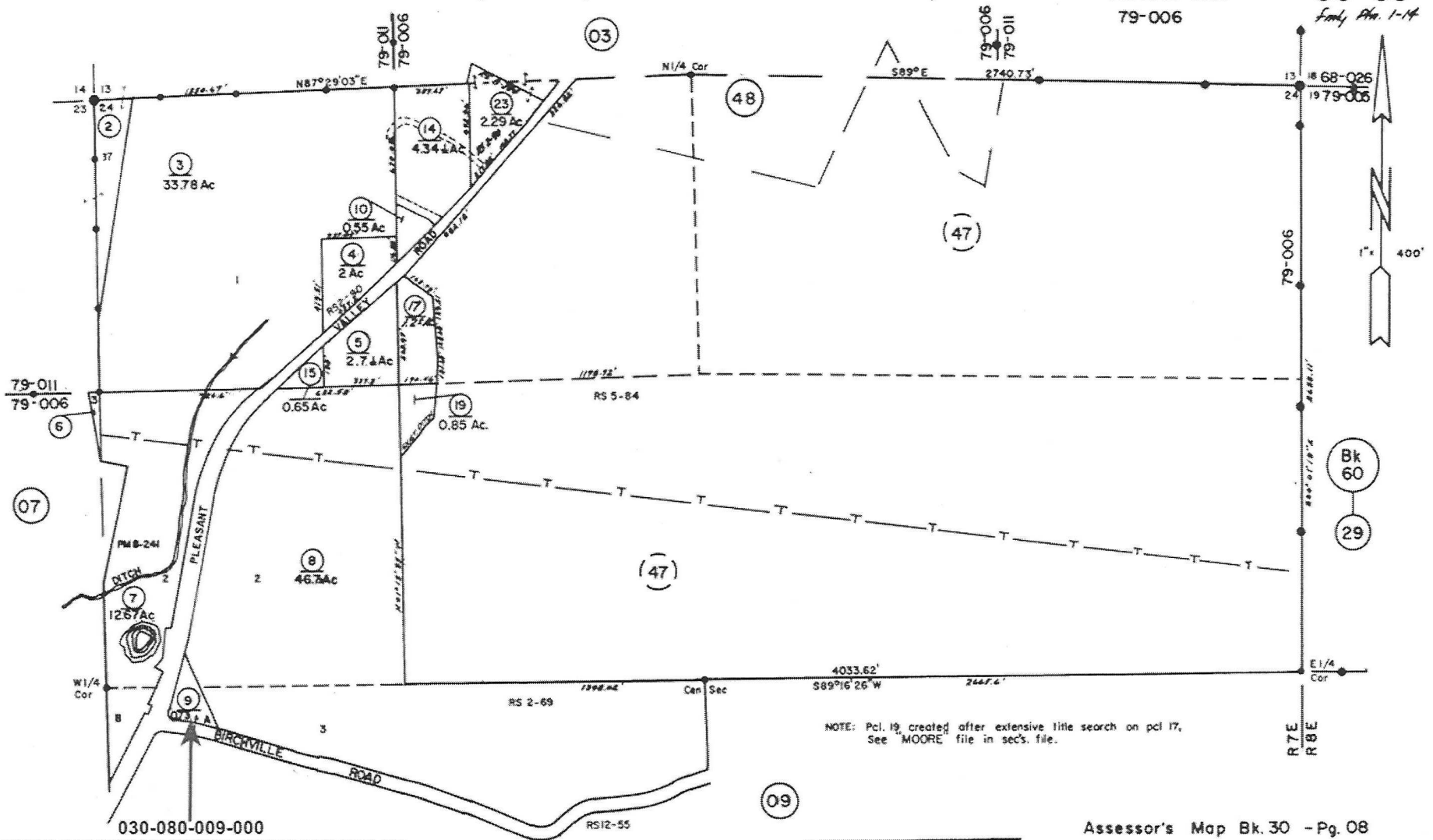


N 1/2 SEC 24 T. 17 N., R. 7 E., M.D.B. & M.

Tax Area Code  
79-006

30-08

Family Pln. 1-14



030-080-009-000  
PANKEY-BRINKMAN HERTA K THE ESTATE OF

NOTE: Pcl. 19 created after extensive title search on pcl 17,  
See "MOORE" file in sec's. file.

**ASSESSOR'S PARCEL MAP**  
This map was prepared for assessment purposes only. No liability is assumed for the accuracy of data shown. Assessor's parcels may not comply with local lot-split or building line ordinances.

Assessor's Map Bk. 30 - Pg. 08  
County of Nevada, Calif.

1974	3-1-84	1-1-84
3-1-76	3-1-77	3-1-87
3-1-75	3-1-80	3-1-82
3-1-74	3-1-81	3-1-97
3-1-74	3-1-82	1-1-48

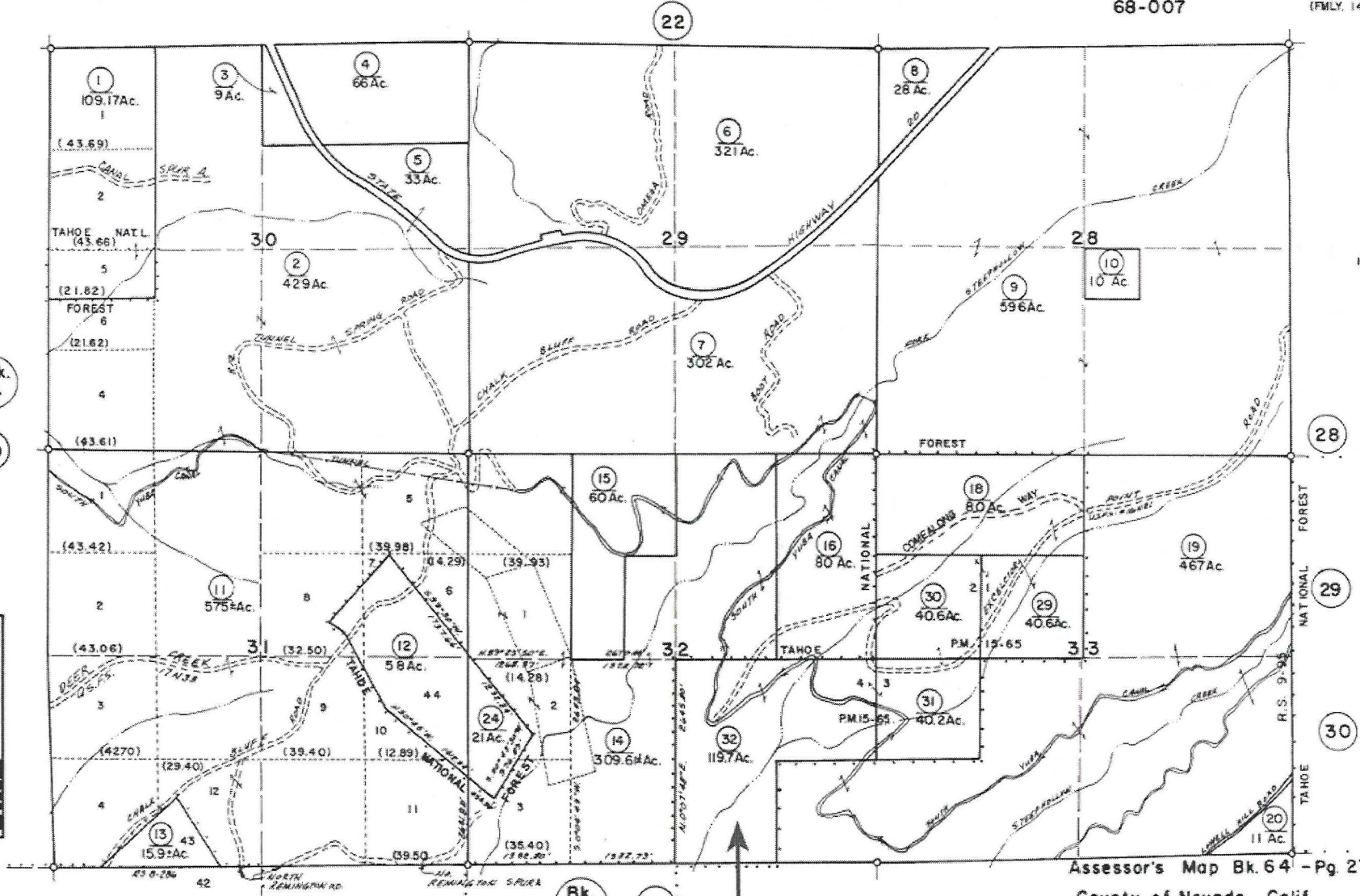
SEC'S 28, 29, 30, 31, 32, & 33, T. 17 N., R. 11 E., M.D.B. & M.

Tax Area Code  
68-007

64-27  
(FMLY. 14-35)



**ASSESSOR'S PARCEL MAP**  
This map is prepared for assessment purposes only. No liability is assumed for the accuracy of the information shown. Assessor's property lines are shown in solid lines. Assessor's property lines are shown in solid lines. Assessor's property lines are shown in solid lines.



Bk. 14  
19

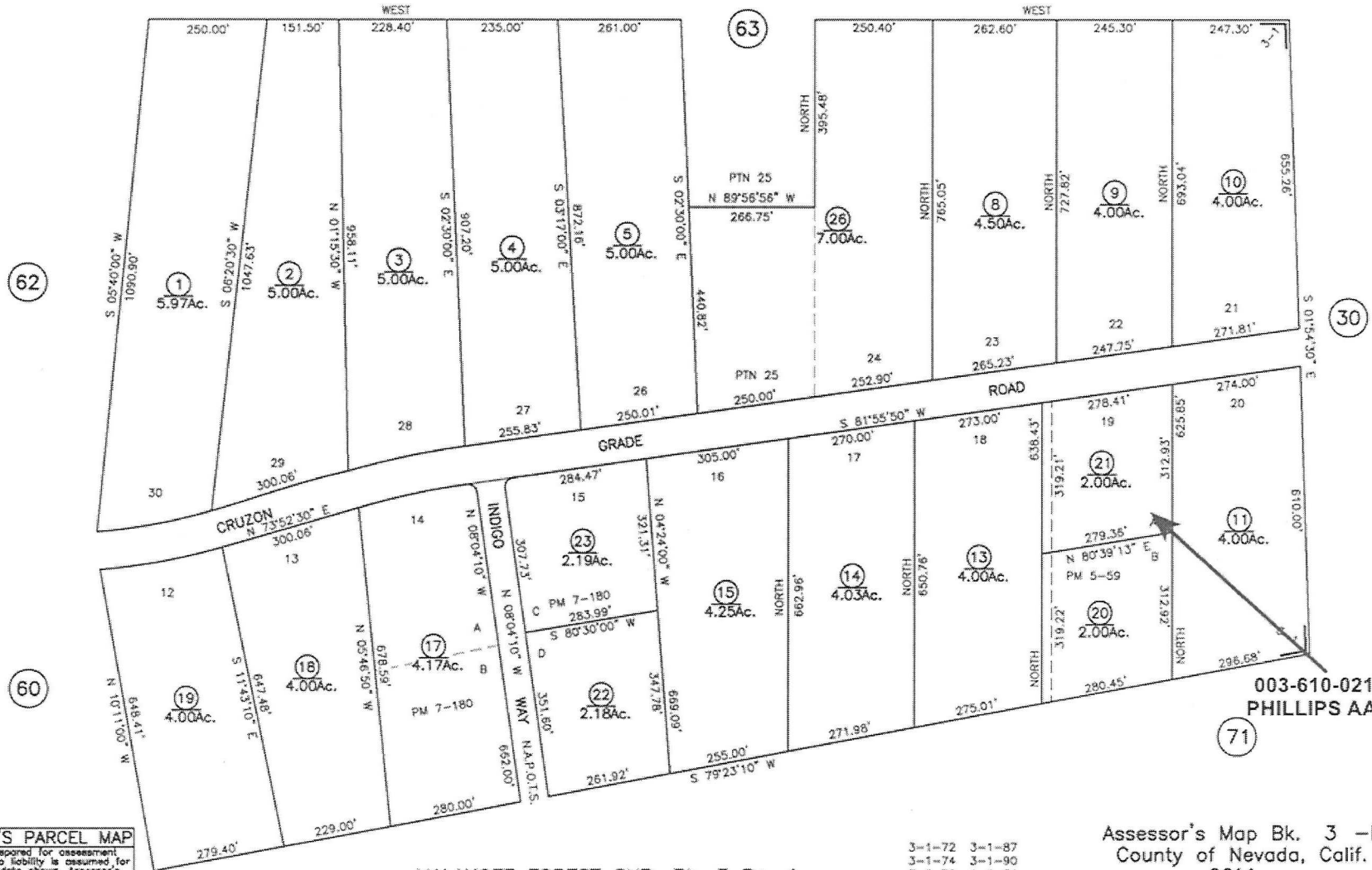
Bk. 65  
10

064-270-032-000  
PETERSON JAMES

Assessor's Map Bk. 64 - Pg. 27

County of Nevada, Calif.

1962 3-1-68  
3-1-82 3-1-85  
3-1-84 3-1-85



**ASSESSOR'S PARCEL MAP**  
 This map was prepared for assessment purposes only. No liability is assumed for the accuracy of data shown. Assessor's parcels may not comply with local lot-split or building site ordinances.

MALAKOFF FOREST SUB. Bk. 3 Pg. 1

3-1-72 3-1-87  
 3-1-74 3-1-90  
 3-1-76 1-1-04  
 3-1-80 1-1-05  
 3-1-RR

Assessor's Map Bk. 3 -Pg. 61  
 County of Nevada, Calif.  
 2011

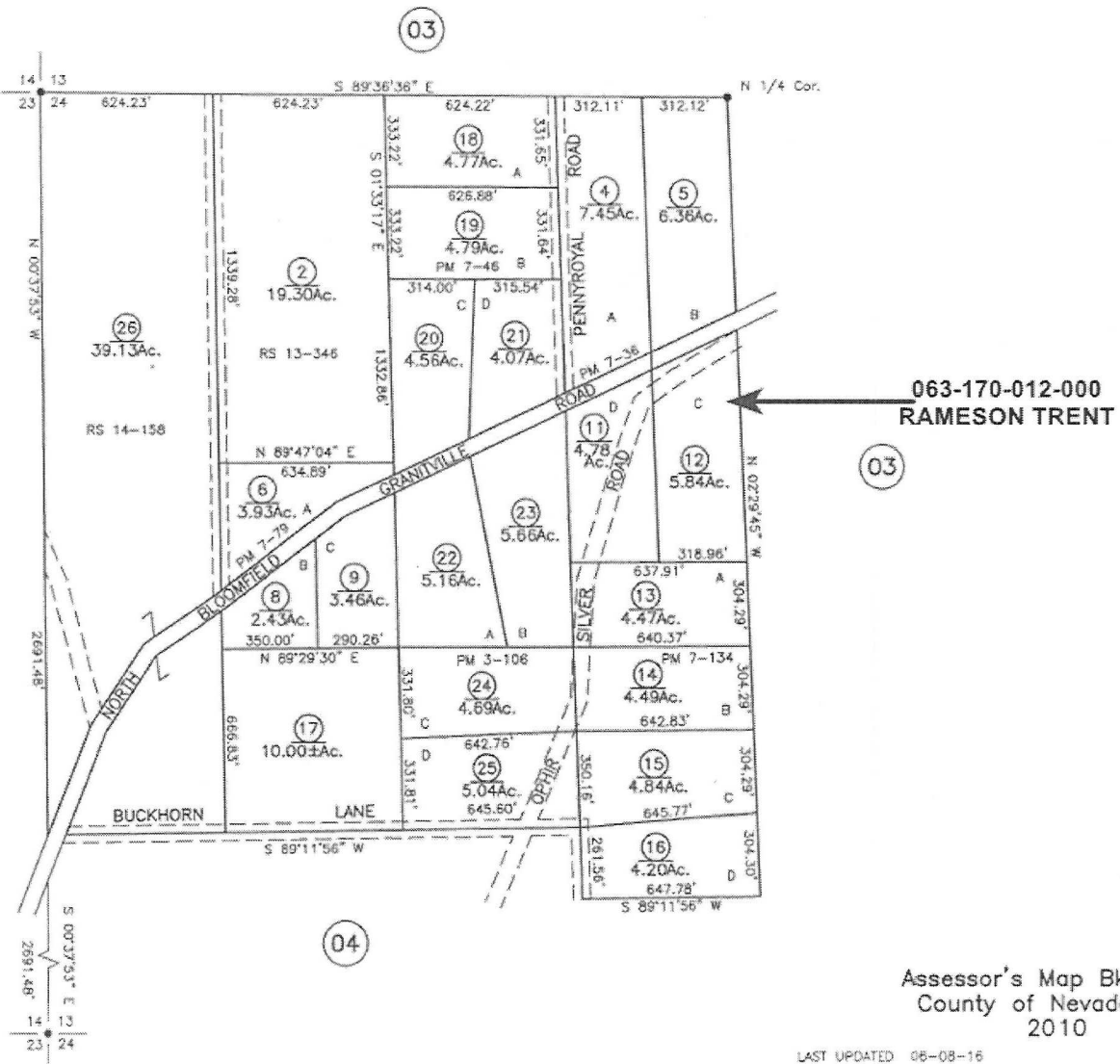
LAST UPDATE: 11-1-2011 AAG 11/11

003-610-021-000  
 PHILLIPS AARON

PTN. SEC 24, T. 18 N., R. 10 E., M.D.B. & M.

Tax Area Code  
79-000

63-17  
(Fmly. Ptn. 63-03)



**ASSESSOR'S PARCEL MAP**  
 This map was prepared for assessment purposes only. No liability is assumed for the accuracy of data shown. Assessor's parcels may not comply with local lot-split or building site ordinances.

Assessor's Map Bk. 63 -Pg. 18  
 County of Nevada, Calif.  
 2010

LAST UPDATED 08-08-16

TM 06/16

PTN. SEC. 31, T. 18 N., R. 16 E., M.D.B. & M.

Tax Area Code  
3-001

46-44  
(Fmly. Ptn. 16-17)

046-440-001-000  
REECE JOHN



TAHOE DONNER UNIT NO. 6 SUB. Bk. 4, Pg. 34  
TRUCKEE INC. R.S. Bk. 11, Pg. 67

**ASSESSOR'S PARCEL MAP**  
This map was prepared for assessment purposes only. No liability is assumed for the accuracy of data shown. Assessor's parcels may not comply with local lot-split or building site ordinances.

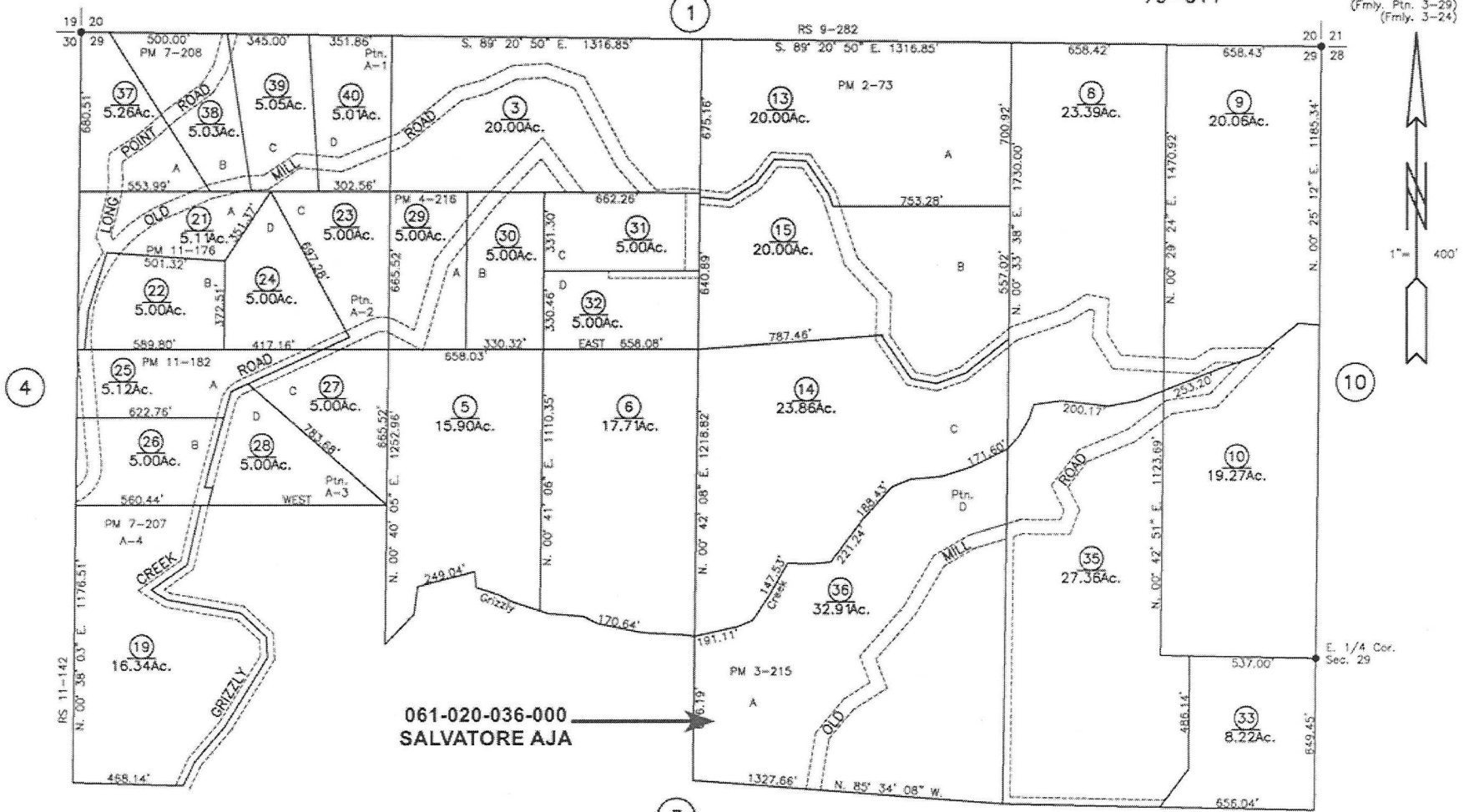
Assessor's Map Bk. 46-Pg. 44  
County of Nevada, Calif.  
2003



PTN. SEC. 29, T. 18 N., R. 9 E., M.D.B. & M.

Tax Area Code  
79-011

61-02  
(Fmly. Ptn. 3-29)  
(Fmly. 3-24)



061-020-036-000  
SALVATORE AJA

3

**ASSESSOR'S PARCEL MAP**  
This map was prepared for assessment purposes only. No liability is assumed for the accuracy of data shown. Assessor's parcels may not comply with local lot-split or building site ordinances.

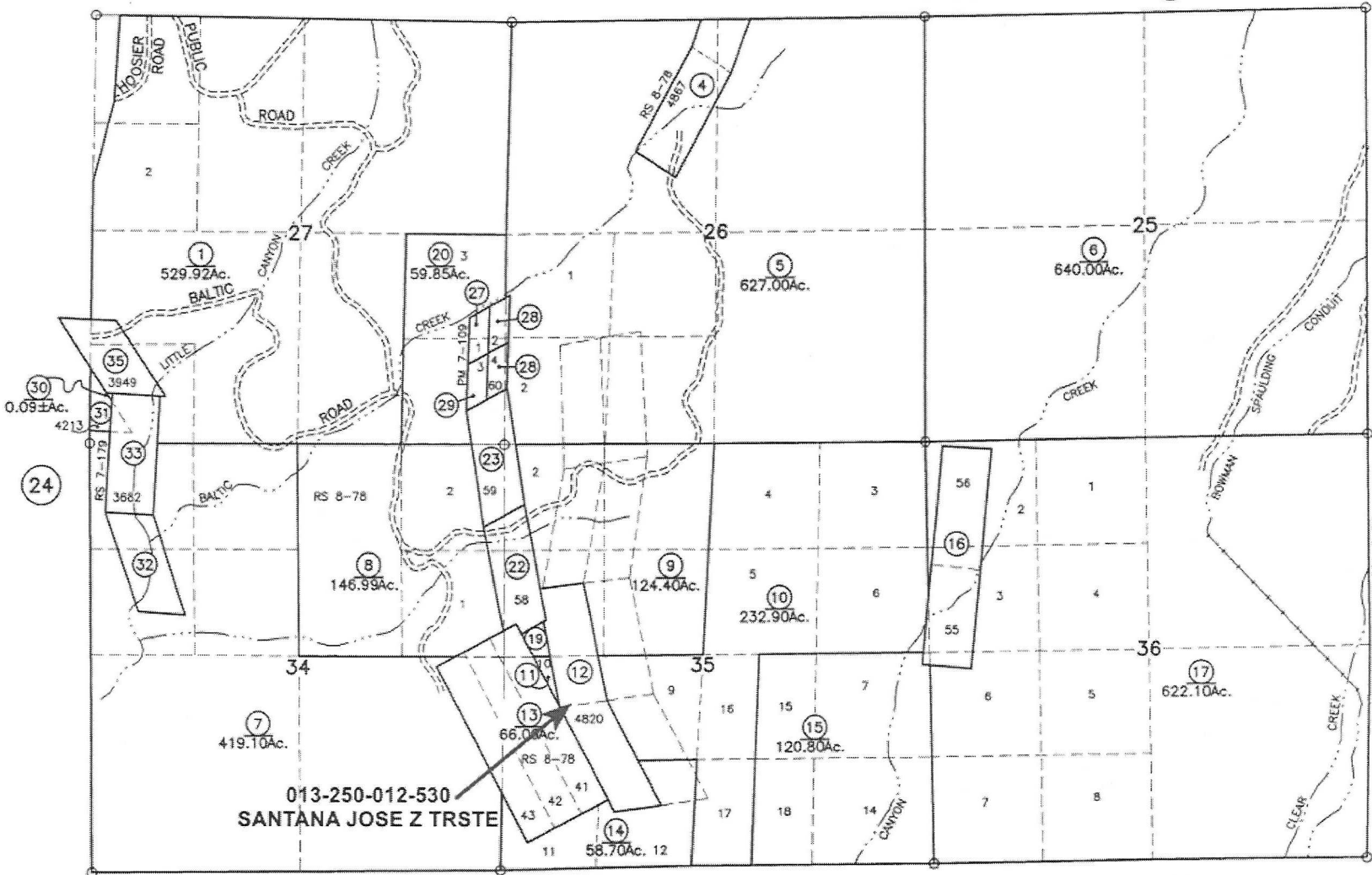
SEC'S 25,26,27,34,35 & 36 T. 18 N., R. 11 E., M.D.B. & M.

(23)

Tax Area Code  
79-000

13-25

79-002  
79-000



(30)	0.09±Ac.	(31)	4213
(32)	3682	(33)	RS 7-178
(34)	419.10Ac.	(35)	3949
(1)	529.92Ac.	(2)	146.99Ac.
(3)	59.85Ac.	(4)	24.10Ac.
(5)	627.00Ac.	(6)	640.00Ac.
(7)	419.10Ac.	(8)	146.99Ac.
(9)	124.40Ac.	(10)	232.90Ac.
(11)	66.00Ac.	(12)	124.40Ac.
(13)	66.00Ac.	(14)	58.70Ac.
(15)	120.80Ac.	(16)	41.32Ac.
(17)	622.10Ac.	(18)	17.13Ac.
(19)	2.27±Ac.	(20)	59.85Ac.
(21)	17.41Ac.	(22)	124.40Ac.
(23)	17.41Ac.	(24)	120.80Ac.
(25)	15.58Ac.	(26)	3.41Ac.
(27)	3.41Ac.	(28)	1.00Ac.
(29)	3.41Ac.	(30)	0.09±Ac.
(31)	3.59Ac.	(32)	3682
(32)	16.73Ac.	(33)	RS 7-178
(33)	20.66Ac.	(34)	419.10Ac.
(34)	15.58Ac.	(35)	3949
(35)	3.41Ac.	(36)	622.10Ac.

013-250-012-530  
SANTANA JOSE Z TRSTE

**ASSESSOR'S PARCEL MAP**  
This map was prepared for assessment purposes only. No liability is assumed for the accuracy of data shown. Assessor's parcels may not comply with local lot-split or building site ordinances.

NOTE: LOCATION OF ROADS AND CREEKS ARE APPROXIMATE

Bk. 64 (13)

3-1-70	3-1-76	3-1-80
3-1-71	3-1-77	3-1-81
3-1-72	3-1-78	3-1-82
3-1-73	3-1-79	3-1-83
3-1-74	3-1-80	3-1-84
3-1-75	3-1-81	3-1-85
	3-1-82	3-1-86

Assessor's Map Bk. 13 -Pg.25  
County of Nevada, Calif.  
2011

LAST UPDATE: 1-1-08

AAG 7/11

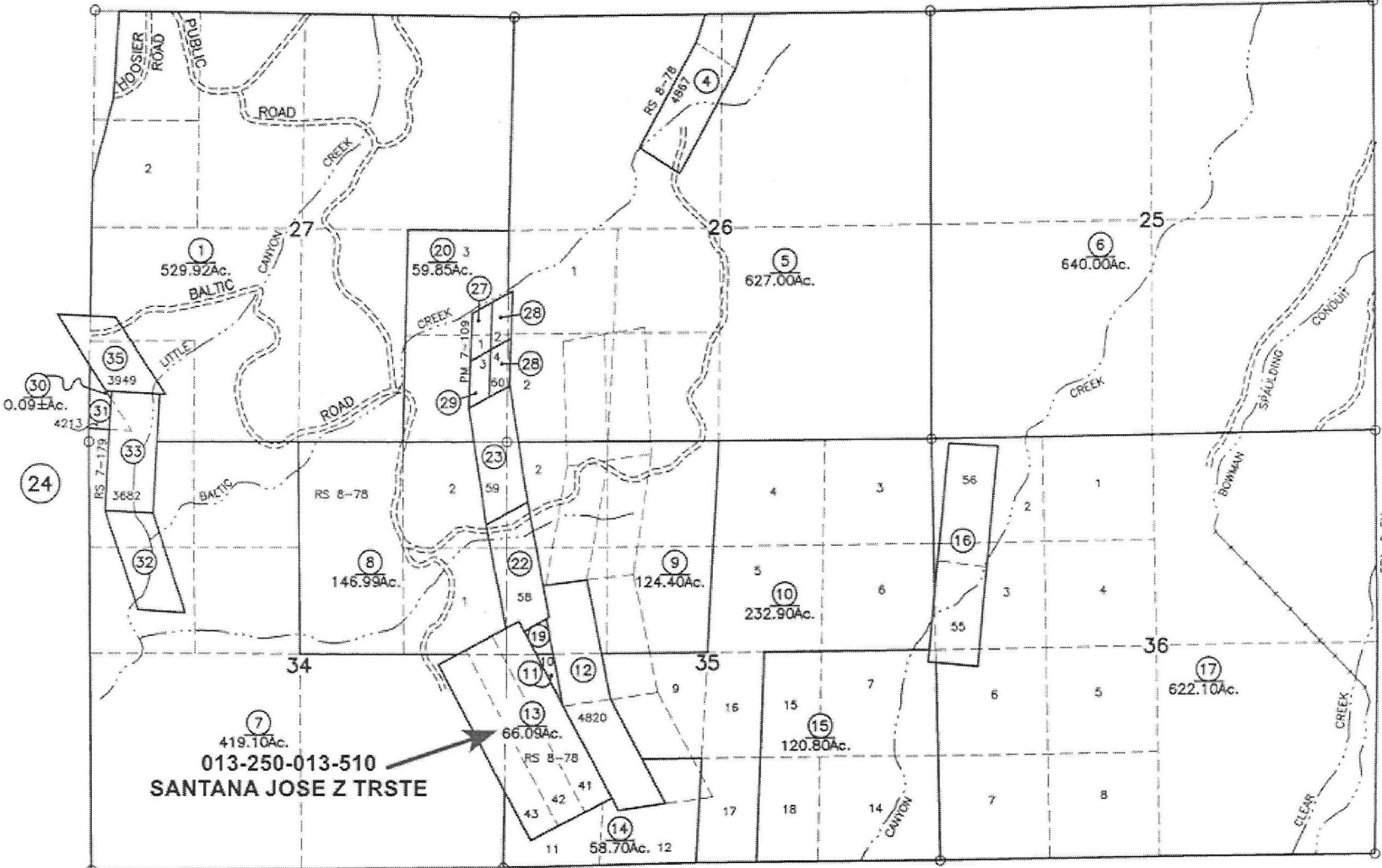


SEC'S 25,26,27,34,35 & 36 T. 18 N., R. 11 E., M.D.B. & M.

(23) Tax Area Code 79-000

13-25

79-002  
79-000



(4)	(27)
24.10Ac.	3.41Ac.
(11)	(28)
1.00Ac.	3.41Ac.
(12)	(29)
49.30Ac.	3.41Ac.
(16)	(31)
41.32Ac.	3.59Ac.
(19)	(32)
2.27Ac.	16.73Ac.
(22)	(33)
17.13Ac.	20.65Ac.
(23)	(35)
17.41Ac.	15.55Ac.
(26)	
3.41Ac.	

**ASSESSOR'S PARCEL MAP**  
This map was prepared for assessment purposes only. No liability is assumed for the accuracy of data shown. Assessor's parcels may not comply with local lot-split or building site ordinances.

NOTE: LOCATION OF ROADS AND CREEKS ARE APPROXIMATE

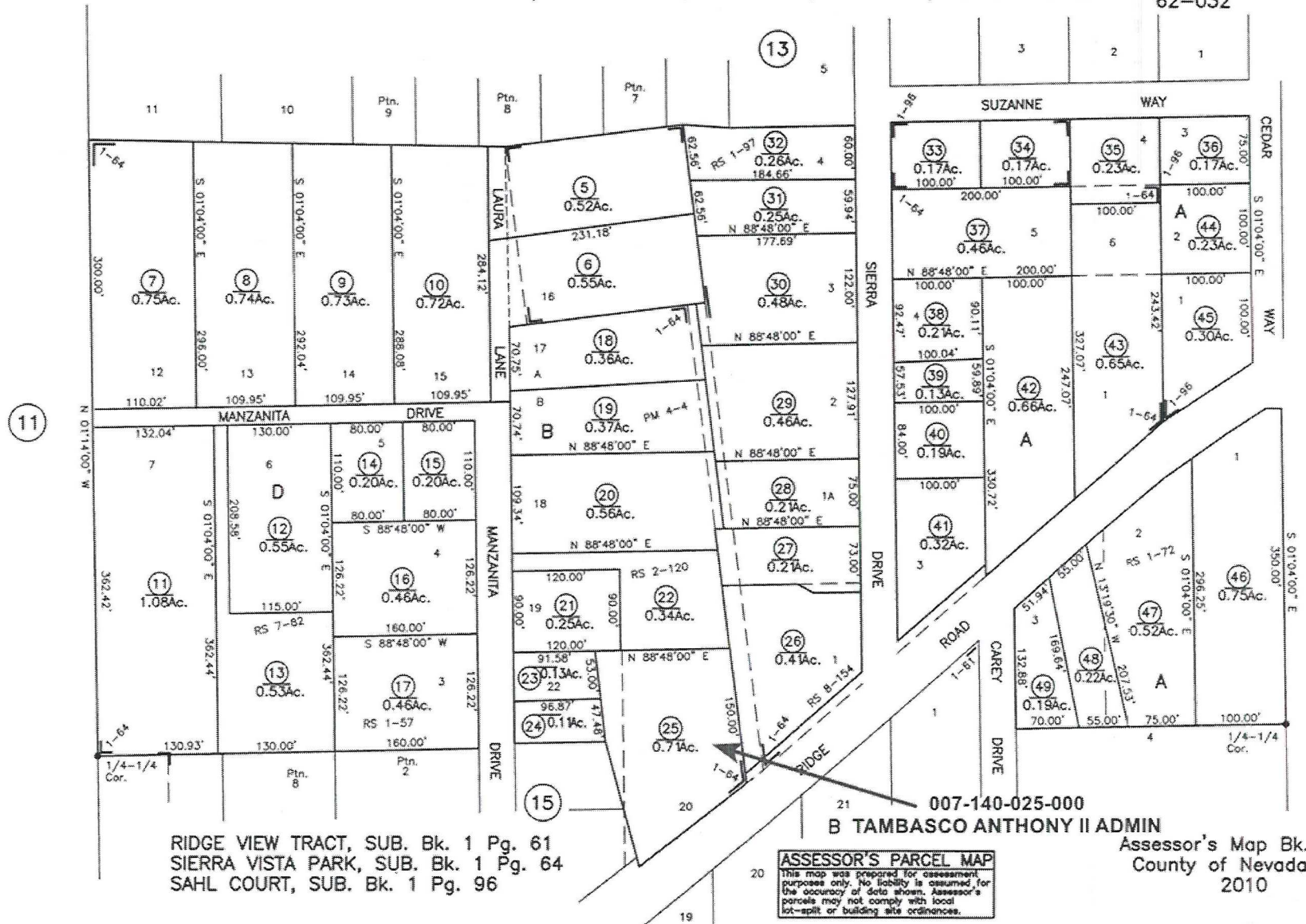
Bk. 64 (13)

3-1-70	3-1-76	3-1-89
3-1-72	3-1-79	3-1-93
3-1-73	3-1-80	1-1-97
3-1-74	3-1-82	1-1-08
3-1-75	3-1-86	

LAST UPDATE: 1-1-08

Assessor's Map Bk. 13 -Pg.25  
County of Nevada, Calif.  
2011

AAG 7/11



Bk. 8  
1

RIDGE VIEW TRACT, SUB. Bk. 1 Pg. 61  
SIERRA VISTA PARK, SUB. Bk. 1 Pg. 64  
SAHL COURT, SUB. Bk. 1 Pg. 96

**ASSESSOR'S PARCEL MAP**  
This map was prepared for assessment purposes only. No liability is assumed for the accuracy of data shown. Assessor's parcels may not comply with local lot-split or building site ordinances.

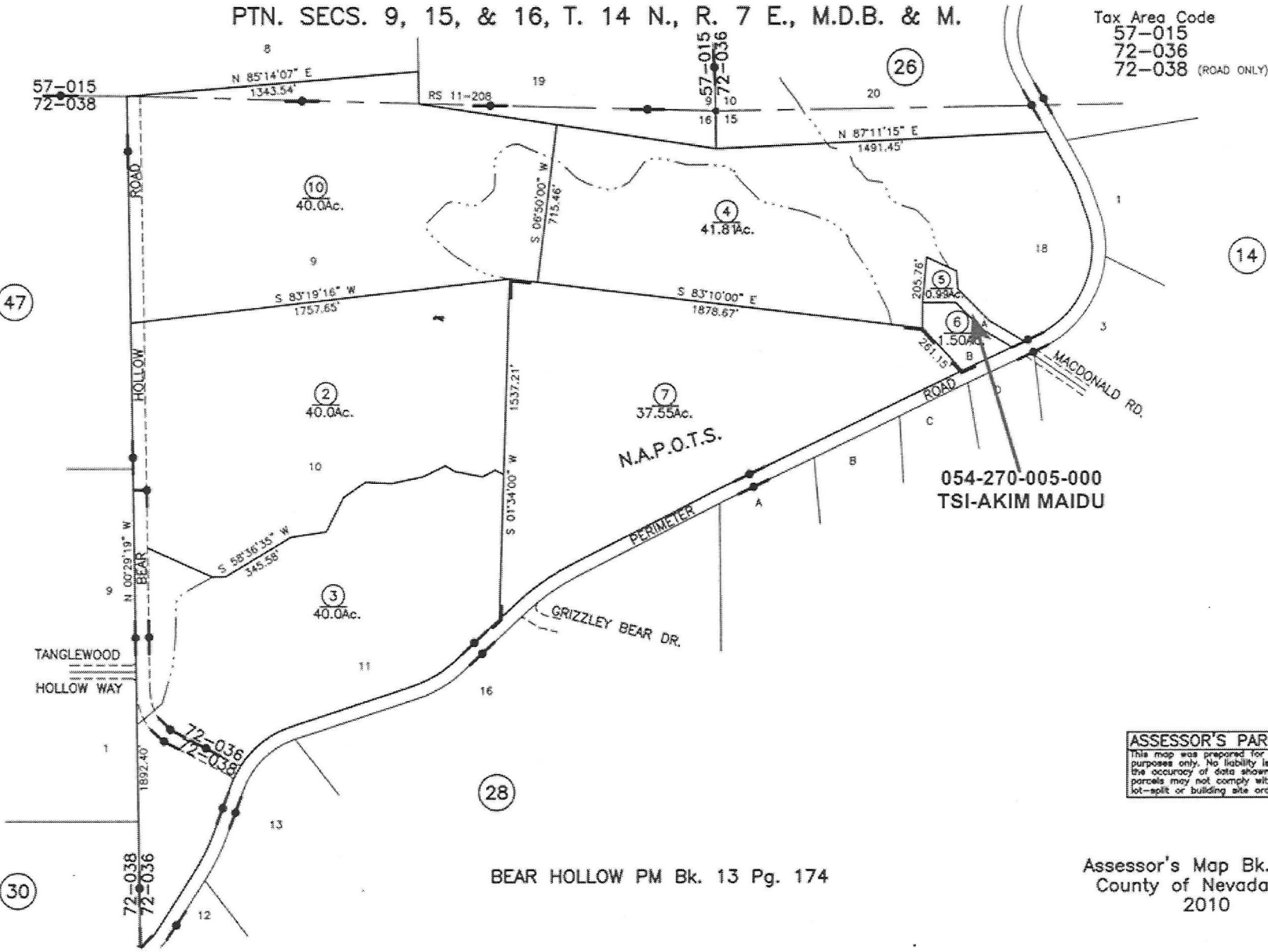
007-140-025-000  
B TAMBASCO ANTHONY II ADMIN

Assessor's Map Bk. 7-Pg.14  
County of Nevada, Calif.  
2010

PTN. SECS. 9, 15, & 16, T. 14 N., R. 7 E., M.D.B. & M.

Tax Area Code  
57-015  
72-036  
72-038 (ROAD ONLY)

54-27  
(Fmly. Ptn. 54-10)  
(Fmly. Ptn. 54-15)



**ASSESSOR'S PARCEL MAP**  
 This map was prepared for assessment purposes only. No liability is assumed for the accuracy of data shown. Assessor's parcels may not comply with local lot-split or building site ordinances.

BEAR HOLLOW PM Bk. 13 Pg. 174

Assessor's Map Bk. 54 -Pg.27  
County of Nevada, Calif.  
2010

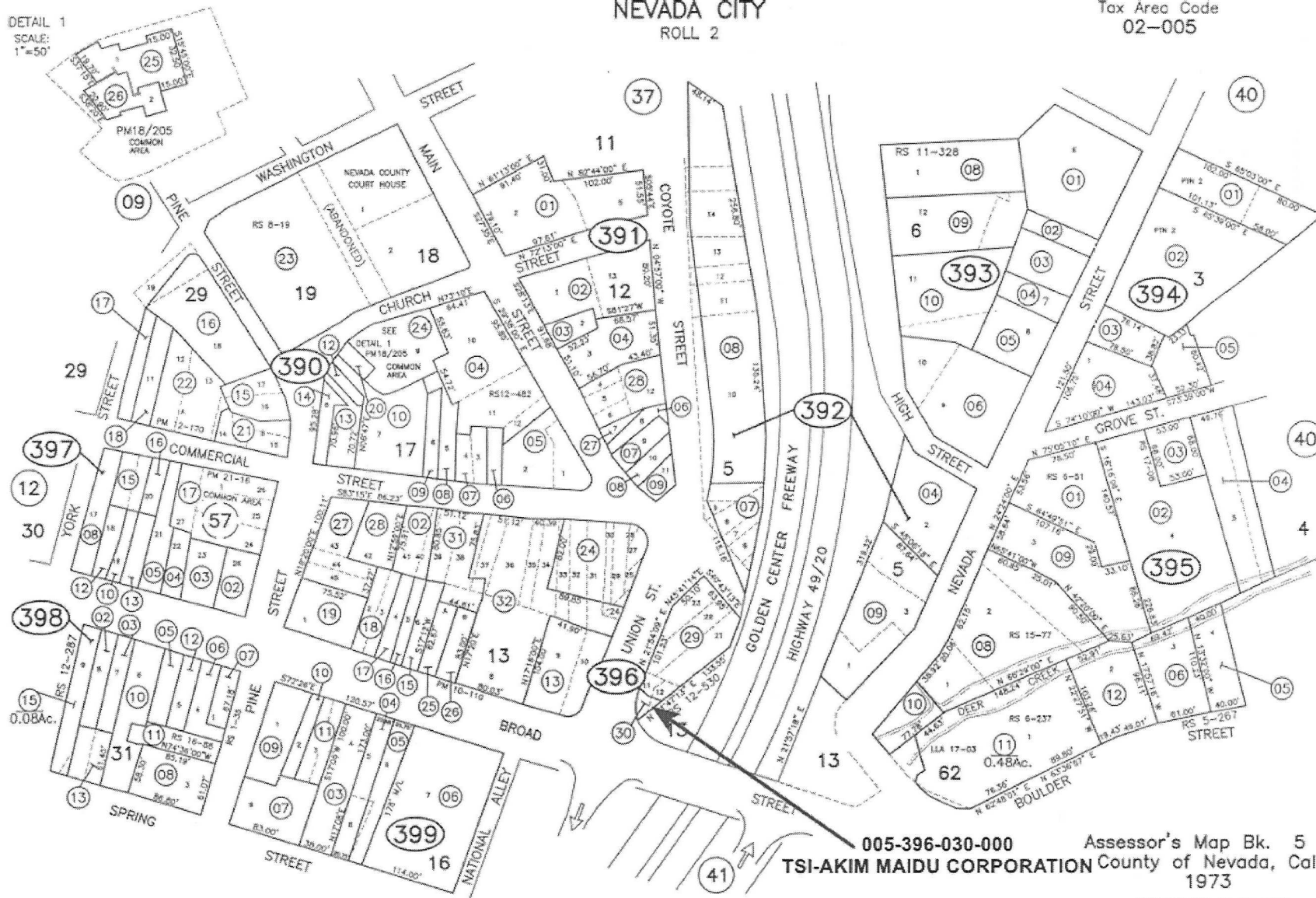
AAG 7/10

NEVADA CITY  
ROLL 2

Tax Area Code  
02-005

5-39

DETAIL 1  
SCALE:  
1"=50'



005-396-030-000 Assessor's Map Bk. 5 -Pg. 39  
TSI-AKIM MAIDU CORPORATION County of Nevada, Calif.  
1973

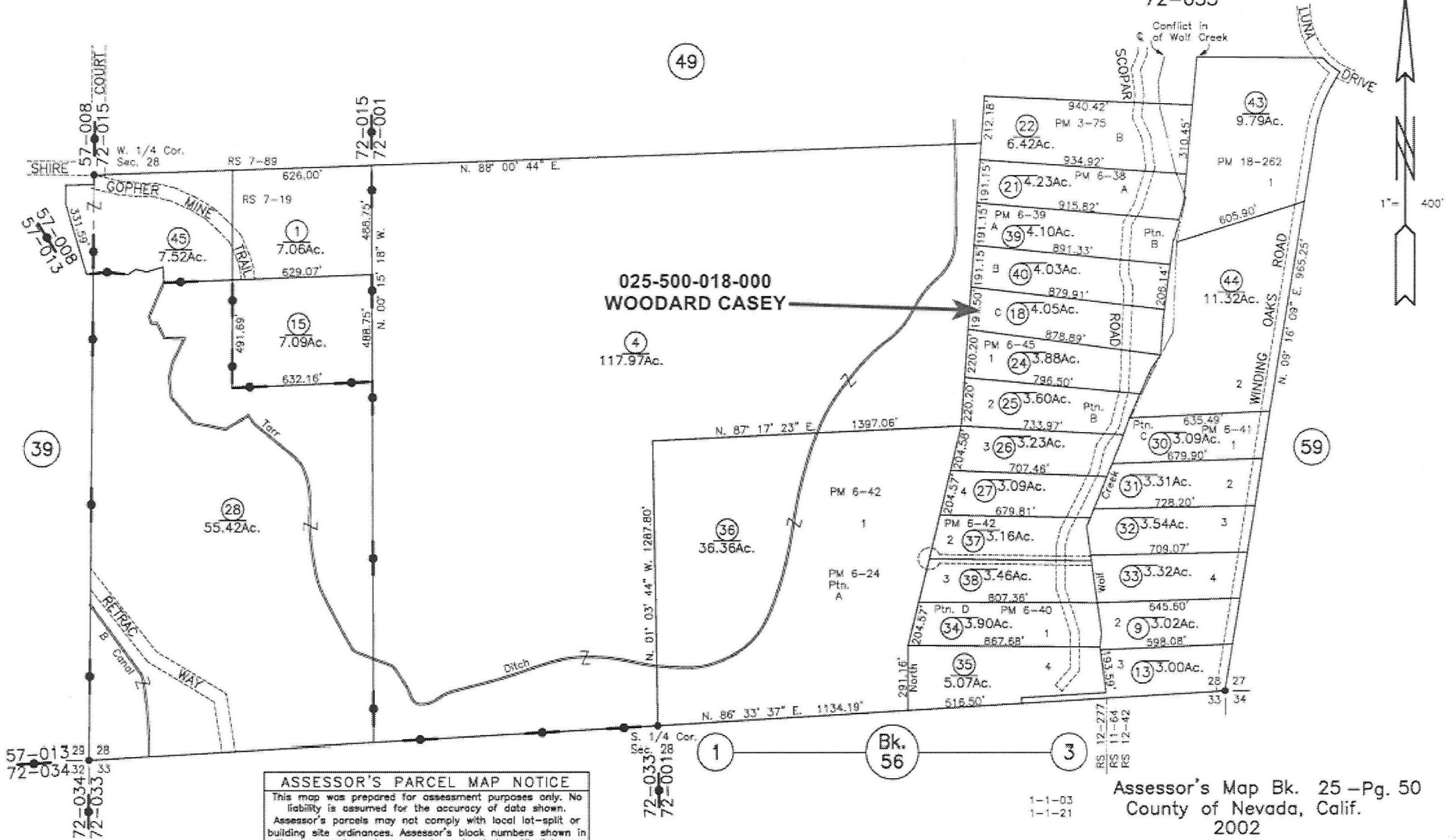
LAST UPDATE: 08-01-2018

TM 06/15

PTN. SEC'S 27 & 28 T. 15 N., R. 8 E., M.D.B. & M.

Tax Area Code  
 72-001  
 72-015  
 72-033

25-50  
 (Fmly. Ptn. 10-34)  
 (Fmly. Ptn. 22-80)  
 (Fmly. Ptn. 25-38)



**ASSESSOR'S PARCEL MAP NOTICE**  
 This map was prepared for assessment purposes only. No liability is assumed for the accuracy of data shown. Assessor's parcels may not comply with local lot-split or building site ordinances. Assessor's block numbers shown in ellipses; parcel numbers are shown in circles. All distances on curved lines are chord measurements.

Assessor's Map Bk. 25 - Pg. 50  
 County of Nevada, Calif.  
 2002