

To:
Wayne Brown Correctional Facility
Pat Souza
925 Maidu Avenue
Nevada City, CA 95959
5304702562 (Contact)

Project:
Nevada County Jail, updated
2/6/23, revised 2/28, 3/7

From:
TriMark
Philip Matheson
philip.matheson@trimarkusa.com
925-931-2143

Unless otherwise noted, items on this quote are quoted per Piper construction per Piper specifications. Please verify all items and options quoted. Alternates on this quote are quoted as standard Piper construction as per Piper specification unless otherwise noted. Please take a moment and review ALL ITEMS as quoted.

If you should find any discrepancies, please contact Piper immediately. Any changes made to the quote or drawings may result in a price change.

PLEASE REVIEW THOROUGHLY. PRICING IS VALID FOR ORDERS SHIPPED WITHIN 120 DAYS OF QUOTE DATE. For shipments scheduled after quote expiration, ADD 1% per month for pricing herein.

Item	Qty	Description	Sell	Sell Total
1	1 ea	TRAY MAKE-UP CONVEYOR Piper Products/Servolift Eastern Model No. SRC-16 Tray Make-Up Conveyor, 16'L, PVC-Rollers, stainless steel roller frames, designed for gravity operation, stainless steel construction	\$13,067.00	\$13,067.00
	1 ea	1 year warranty parts and labor from date of purchase		
	1 ea	16' Raceway	\$7,995.50	\$7,995.50
	3 ea	240V/60/1 outlet, specify amp draw, price per outlet Vollrath Servewell SL Hot Food Table - 240V/1ph model #38218 - 13.3 amps per unit	\$726.14	\$2,178.42
	1 ea	Cord & plug, 100 amp max.	\$2,840.00	\$2,840.00
	1 ea	Field joint (bolt on or field weld) priced per ea.	\$1,454.06	\$1,454.06
2	1 ea	FREIGHT & HANDLING Custom Model No. F&H Freight and Handling Estimate I am trying to find a lower priced alternative	\$1,654.86	\$1,654.86

Merchandise	\$29,189.84
Subtotal	\$29,189.84
Tax 8.3%	\$2,422.76
Total	\$31,612.60

Prices Good Until: 03/21/2023

Piper Products will not be held responsible for any errors and/or omissions caused by receipt of incomplete specification or the absence of detailed drawings. Any equipment held for shipment at the

Purchasers request for a period of (30) days beyond delivery specified, shall become immediately payable at the price specified above. This Quotation does not include any Federal, State, Provincial, or Local taxes, and will be added to the price quoted. Piper equipment meets the design and safety criteria established by local authorities.

Freight charges are not included in this quote and shall be the responsibility of the customer.

PRICING IS VALID FOR ORDERS SHIPPED WITHIN 120 DAYS OF QUOTE DATE.

For shipments scheduled after quote expiration, ADD 1% per month for pricing herein.

RETURNS: It is the responsibility of the recipient to inspect all goods before accepting a delivery. (Note: signing the packing paperwork / bill of lading is accepting responsibility for the shipment). If there are damages or shortages of any kind, please report by documenting it on the packing paperwork/bill of lading and immediately notify TriMark. The delivered goods were counted and checked before shipping to avoid any errors. If you sign for damages, or shortages without documentation, you do so at your own risk.

Returns will be accepted only up to the 30th day from receipt. All returns require pre-approval and authorization from your TriMark representative. Once approval for your return is issued, you may return the goods with the appropriate paperwork for credit. All returned items must be new and unused in the original packaging, with the original manufacturer's packaging and protective materials in place. Non-stock merchandise is subject to a 30% restocking fee. For small parcel or local route truck pick-up of returnable stock product, a \$25 handling fee will apply. For stock returns requiring LTL pick-up, a fee of \$150 per pallet will be assessed.

Returns made within 30 days will be refunded via original method of payment. Purchases by check will be refunded via check after verification of payment by our bank.

TriMark does not accept returns for the following items:

- Items from orders older than 30 days.
- Hazardous items or flammable liquids.
- Custom merchandise. Logoed merchandise.
- Items that have been used.
- Any item not returned in the condition it was received.
- Any item not in the original manufacturer's packaging.
- Consignment / Demo / Closeout items
- Outlet
- Clearance / Scratch & Dent
- Perishable and Consumable Items (including food and disposables)
- Furniture

Commercial & Home Use Policy: Manufacturer warranties may only cover commercial use for products. Use of items in non-commercial environments may void warranties. The right is reserved to deny a sale or shipment for residential usage; if this occurs, you will be notified as soon as possible.

Delivery & Installation: Installation and delivery are not included unless specified on your order. Basic charges do not include lifting over counters and railings, or removal of appliances being replaced. *If you choose not to have us deliver your equipment, we will not be responsible for any physical damage after it has left our premises.* We gladly give free assistance loading any equipment into your vehicle, but we will *not be responsible for any damage to you, your possessions, or your vehicle during the process.* Inspect all items carefully before leaving our facility.

This Quote shall be subject to TriMark's Terms of Sale <http://www.trimarkusa.com/SiteMedia/SiteResources/Terms/TriMark-Terms-and-Conditions-of-Sale.pdf> , which are incorporated herein by reference and shall govern. The parties specifically agree that no signature shall be required in order for this Quote or its applicable terms and conditions to be deemed legally binding and enforceable on Customer where the intent to be so bound can be inferred (including by acceptance or retention of products or services), notwithstanding contrary requirements under any law.

Acceptance: _____ Date: _____

Printed Name: _____

Project Grand Total: \$31,612.60

JOB _____ ITEM # _____ QTY # _____

MODEL NUMBER**ROLLER**

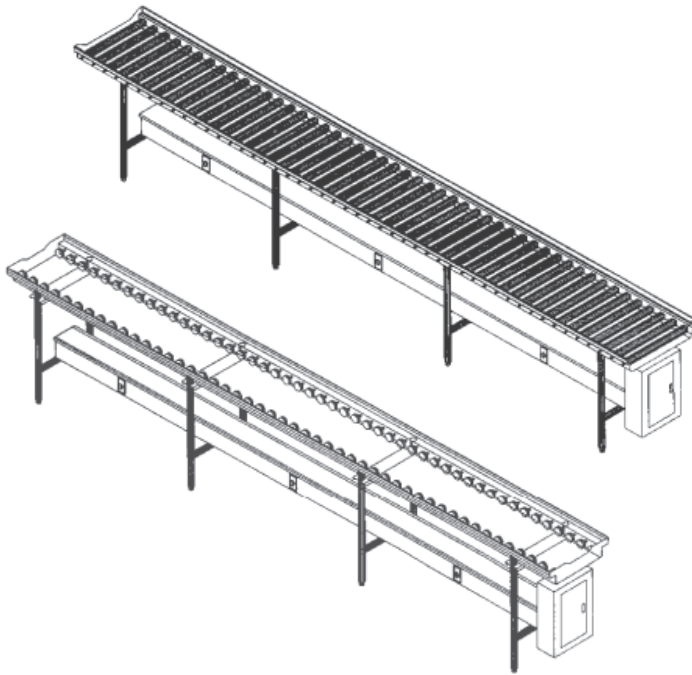
- SRC-8
- SRC-10
- SRC-12
- SRC-14
- SRC-16
- SRC-18
- SRC-20

SKATE WHEEL

- SSC-8
- SSC-10
- SSC-12
- SSC-14
- SSC-16
- SSC-18
- SSC-20

ELITE SKATE

- ESC-32
- ESC-46
- ESC-60
- ESC-74
- ESC-88



Roller and Skate Wheel conveyors are designed for tray make-up. These conveyors will help for streamline tray assembly for healthcare or catering operations. Both units can be equipped with an electric raceway and breaker panels for on-line support equipment connections. Roller conveyors will handle compartment or flat bottom trays. Skate Wheel conveyors will handle flat bottom trays only.

STANDARD FEATURES

- ◆ Stainless steel frame
- ◆ PVC rollers or Nylon rollers
- ◆ Stainless steel bullet feet
- ◆ Stainless steel "H" frame

CONSTRUCTION

Roller conveyors shall have a 1-7/8" O.D. gray P.V.C. tubing with stainless steel ball bearings. Rollers mounted on stainless steel hex springloaded shafts. The rollers are spaced on 3" or 4" centers.

Skate Wheel assemblies shall be 2" diameter nylon wheels with low friction bushing for free movement. Wheels are secured to frame with stainless steel bolts with self-locking nuts. Wheels are spaced 3" to 4" centers and are removable for easy cleaning.

Conveyors are supported by a 1-5/8" O.D. 16 gauge stainless steel tubular legs. Stainless steel tubing fits into stainless steel sleeves welded to conveyor frame. Legs are secured to sleeves with allen head set screws. Conveyors come standard with adjustable stainless bullet feet.

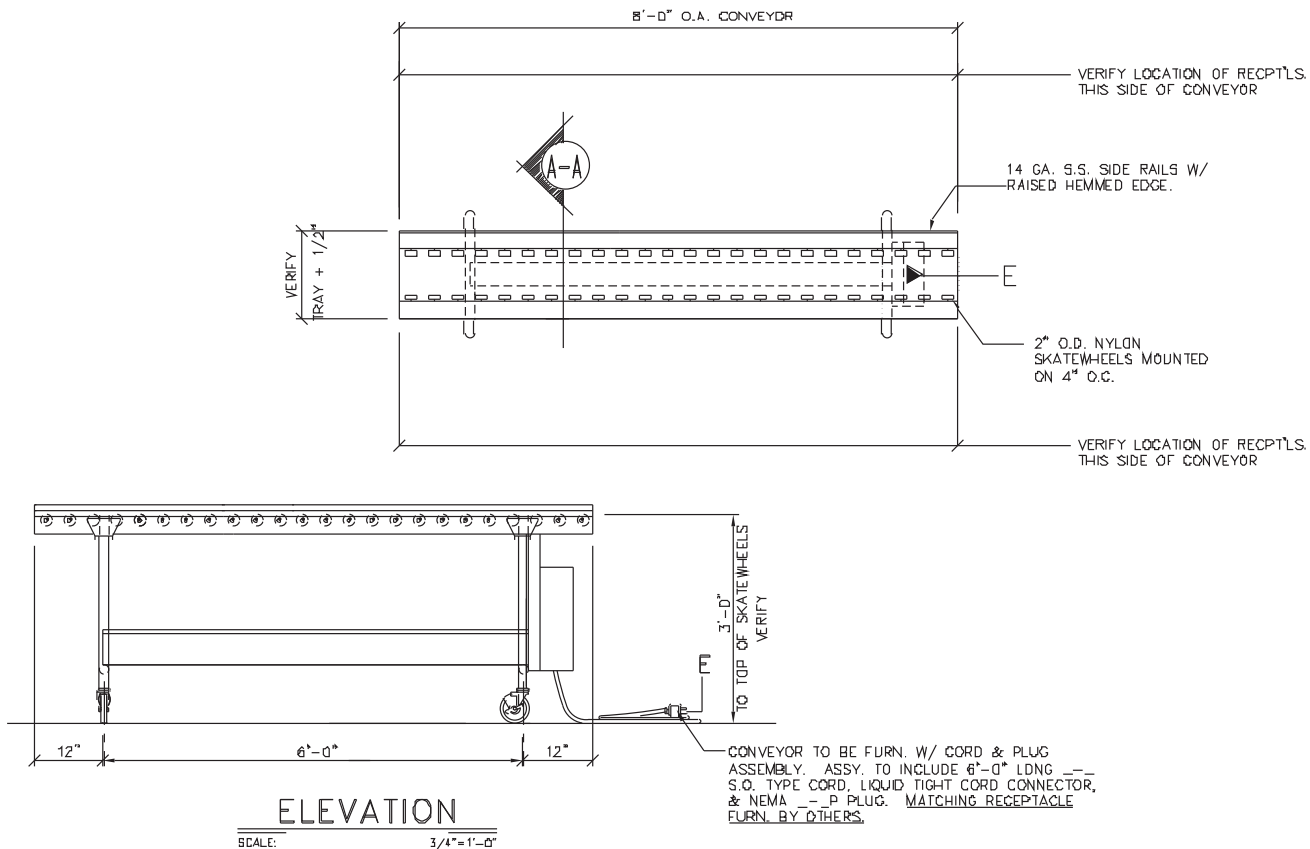
WARRANTY

One year parts and labor. Warranty is detailed on inside front cover of the price list.

SPEC G-1

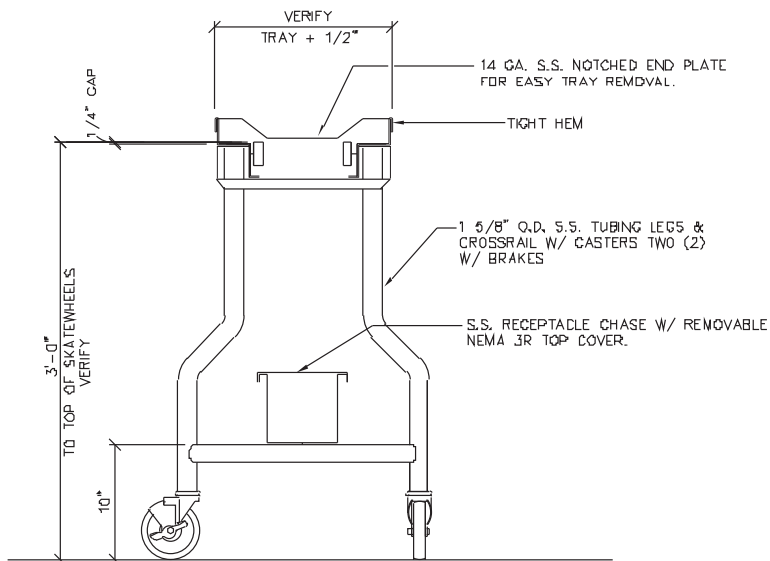
PIPER PRODUCTS
BUILT TO LAST
www.piperonline.net

300 S. 84th Avenue
 Wausau, WI 54401
 Phone: 800-544-3057
 Fax: 715-842-3125



OPTIONS / ACCESSORIES

- Electric raceway
- Receptacles
- Removable sections
- Casters
- Stainless steel rollers
- Field joint
- Movable over shelf
- Prison package



G-1 SPEC

PIPER PRODUCTS
 BUILT TO LAST
www.piperonline.net

300 S. 84th Avenue
 Wausau, WI 54401
 Phone: 800-544-3057
 Fax: 715-842-3125

LIMITED WARRANTY: PIPER PRODUCTS warrants to the original purchaser parts and labor for a period of twelve (12) months from the date of purchase. See manufacturer's complete warranty for details.

It is our policy to build equipment which is design certified by companies that have been accredited at the Federal Level by the Occupational Safety and Health Agency (OSHA) and ANSI as a National Recognized Testing Laboratory. These companies include CSA International, Underwriters Laboratories, and the National Sanitation Foundation. However, a continuing program of product improvement makes it necessary to submit new models to the agencies as they are developed. Consequently, all models may not bear the appropriate labels at all times.

We reserve the right to change specifications and product design without notice. Such revisions do not entitle buyer to corresponding changes, improvements, additions or replacements for previously purchased equipment. Information is not for design purposes.