

Nevada County, CA: 2021 Redistricting - Option 2








Legend

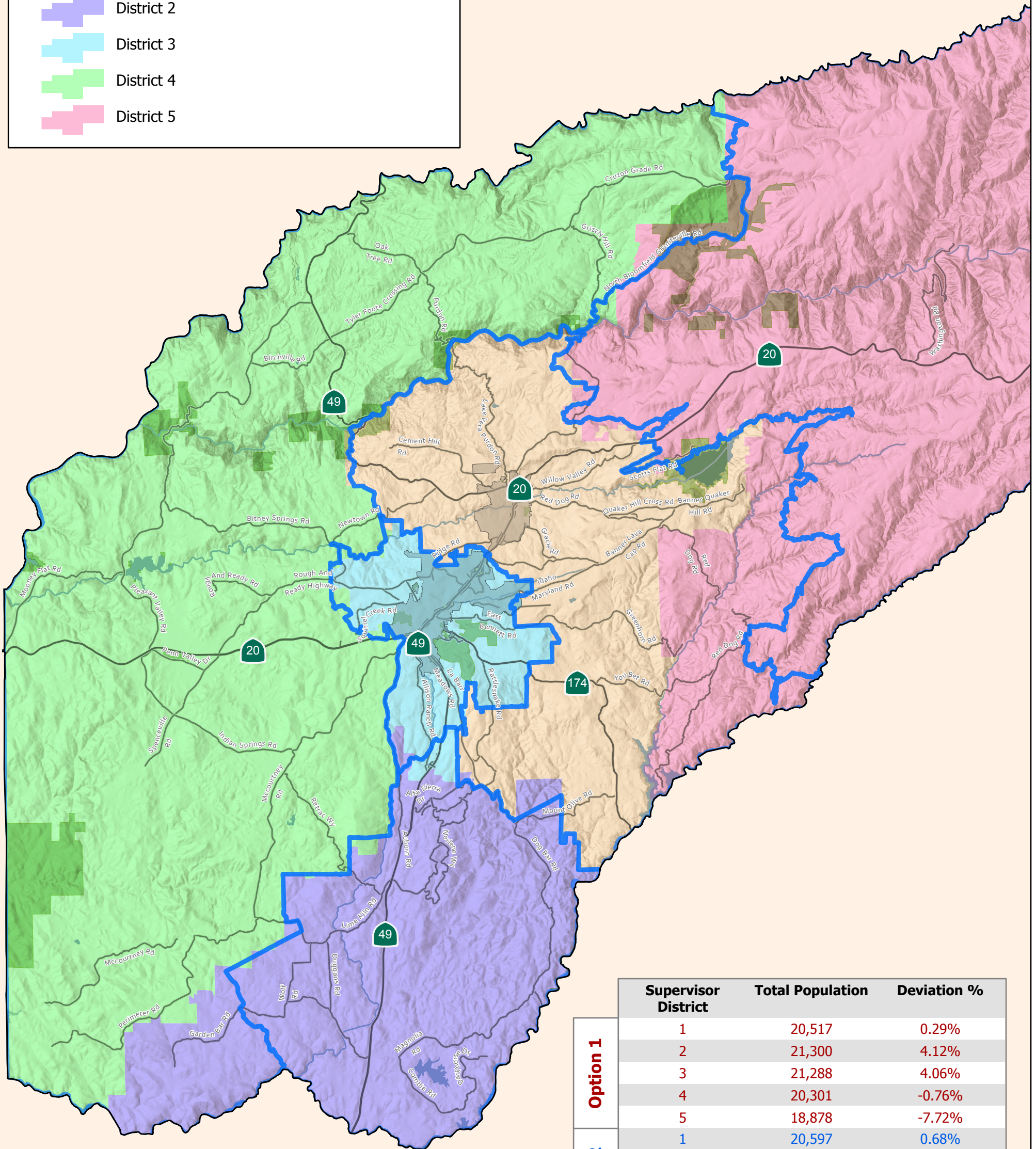
Option 2



Objectives: Move You Bet and Greenhorn communities into District 1, and expand District 4 south to balance population

Current Supervisor District Boundaries

-  District 1
-  District 2
-  District 3
-  District 4
-  District 5



	Supervisor District	Total Population	Deviation %
Option 1	1	20,517	0.29%
	2	21,300	4.12%
	3	21,288	4.06%
	4	20,301	-0.76%
	5	18,878	-7.72%
Option 2	1	20,597	0.68%
	2	21,151	3.39%
	3	20,820	1.77%
	4	20,453	-0.02%
	5	19,263	-5.84%
Option 3	1	21,254	3.9%
	2	20,802	1.69%
	3	20,649	0.94%
	4	20,973	2.52%
	5	18,606	-9.05%

