

EXHIBIT "A"
AUTHORIZATION AND REPORT OF SALES

Under direction of the Board of Supervisors, by Resolution No.____ dated August 8, 2023, the property listed below is to be offered for sale at public internet auction or by sealed bid sale (if noted) beginning November 8, 2023, and to be disposed of as follows:

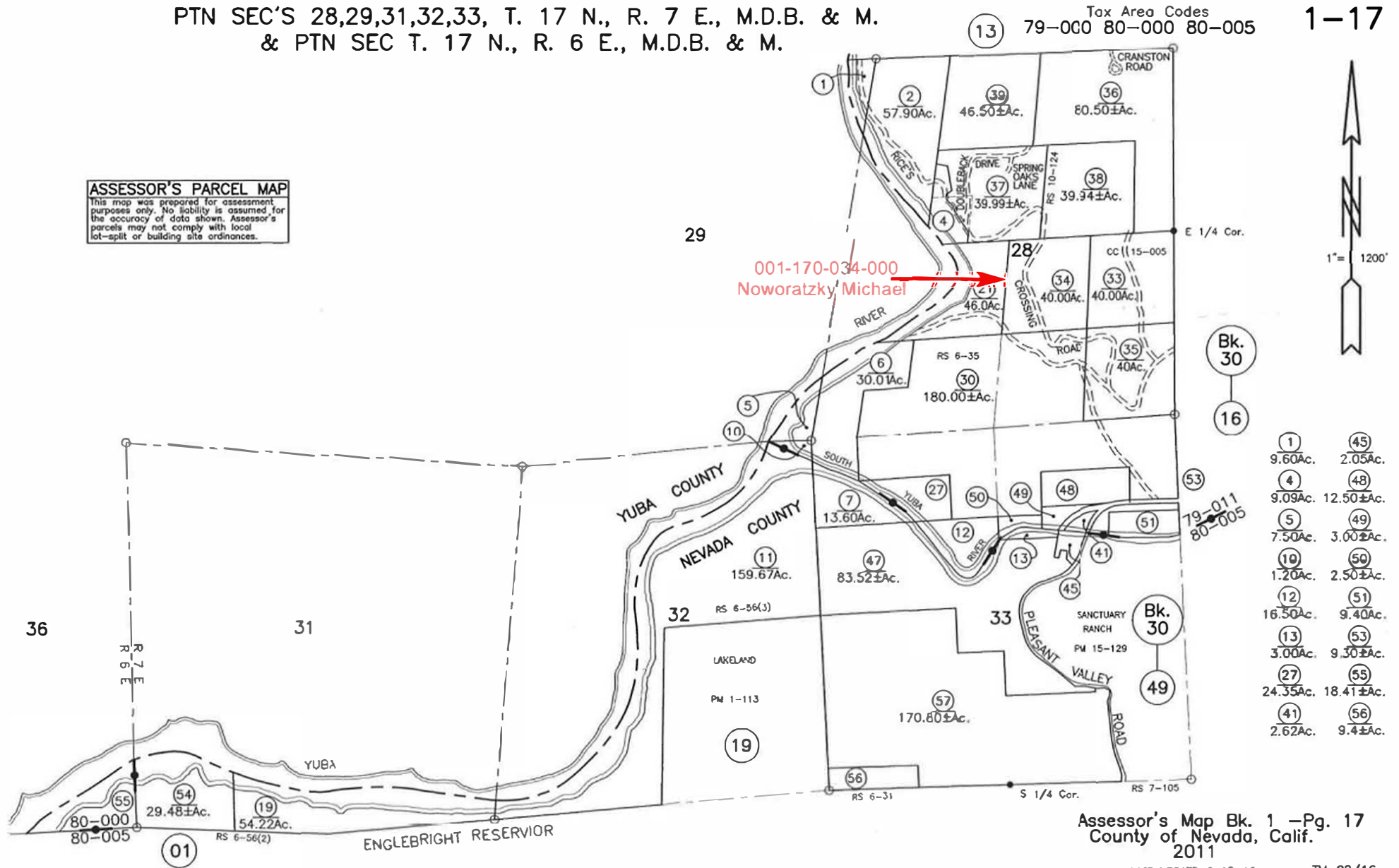
PARCEL NUMBER	LAST ASSESSED OWNER	MINIMUM BID	SALE STATUS
001-170-034-000	NOWORATZKY MICHAEL A ETAL	\$ 31,992.00	
002-560-015-000	VALMOJA RICHARD B LIFE EST	\$ 4,407.00	
007-140-022-000	ANGULO ALISON M	\$ 11,219.00	
008-260-023-000	PRITCHARD TONY L & SHELLEY K	\$ 27,548.00	
009-400-027-000	ALDRIDGE PAULINE F TRSTE	\$ 9,742.00	
011-020-034-000	DRIVER WEDGE PROPERTY LLC	\$ 47,236.00	
011-510-001-000	KUCKLY GEORGE B	\$ 46,632.00	
013-400-014-000	SAUNDERS ANTHONY C	\$ 7,291.00	
017-100-007-000	TREDREA COLIN R	\$ 57,753.00	
018-520-058-000	BUSWELL BROOK	\$ 10,087.00	
018-534-014-000	TARSKI MARIA J TRUST	\$ 6,904.00	
018-534-022-000	TARSKI MARIA J TRUST	\$ 9,773.00	
019-130-012-000	MCLEAN LEONARD C TRSTE ETAL	\$ 11,496.00	
020-780-051-000	WONG ALBERT	\$ 5,409.00	
025-220-046-000	FLEITAS GENE	\$ 15,824.00	
025-430-009-000	FLEITAS GENE	\$ 5,166.00	
025-500-036-000	R3ENTERPRISES LLC	\$ 54,526.00	
026-130-019-000	SUGARLOAF VIEW LP C/O RONALD I HENRICKS	\$ 74,359.00	
026-480-039-000	SUGARLOAF VIEW LP	\$ 16,130.00	
028-160-017-000	BRATTON MICHAEL	\$ 19,388.00	
028-270-026-000	GARDNER MICHAEL	\$ 20,953.00	
030-030-022-000	STATHAM ROD & DENISE	\$ 19,779.00	
031-100-029-000	THOMSON JILL H S	\$ 44,330.00	
033-540-008-000	BOWMAN SHAWN A & SARAH K	\$ 8,232.00	
033-590-031-000	MAZZOCCO MAUREEN J	\$ 56,140.00	
036-220-002-000	RHOADES DONNA EST OF C/O JUSTIN DANIELS	\$ 8,305.00	
038-360-016-000	PERGENS KAREN	\$ 31,668.00	
047-320-005-000	MOHUN JOHN & LISA	\$ 12,020.00	
048-050-004-000	BYERS STEPHEN F ETAL	\$ 6,247.00	
048-190-028-000	SORTOR LONNIE L & TANNA S	\$ 92,938.00	
050-140-045-000	FONTAINE JOSHUA	\$ 9,533.00	
050-190-019-000	GONZALEZ CRISTOBAL	\$ 20,195.00	
050-260-021-000	MAAG ANTHONY A	\$ 159,776.00	
051-070-079-000	STEVENS ALLEN	\$ 14,897.00	
053-030-012-000	COTE STEVEN M TRSTE	\$ 33,972.00	
053-411-014-000	DOPPELMAYR PATRICK	\$ 11,969.00	
060-210-003-000	BRACKNEY JONATHAN	\$ 8,387.00	
060-210-006-000	BRACKNEY JONATHAN	\$ 23,589.00	
061-080-049-000	CRAWFORD MELISSA A	\$ 31,550.00	
061-100-051-000	GRUBER RAND D (R) ETAL	\$ 6,186.00	
062-210-016-000	THOMAS EDWIN W EST OF	\$ 15,325.00	
065-090-004-000	FNG ASSETS LLC	\$ 80,770.00	

PTN SEC'S 28,29,31,32,33, T. 17 N., R. 7 E., M.D.B. & M.
 & PTN SEC T. 17 N., R. 6 E., M.D.B. & M.

Tax Area Codes
 79-000 80-000 80-005

1-17

ASSESSOR'S PARCEL MAP
 This map was prepared for assessment purposes only. No liability is assumed for the accuracy of data shown. Assessor's parcels may not comply with local lot-split or building site ordinances.



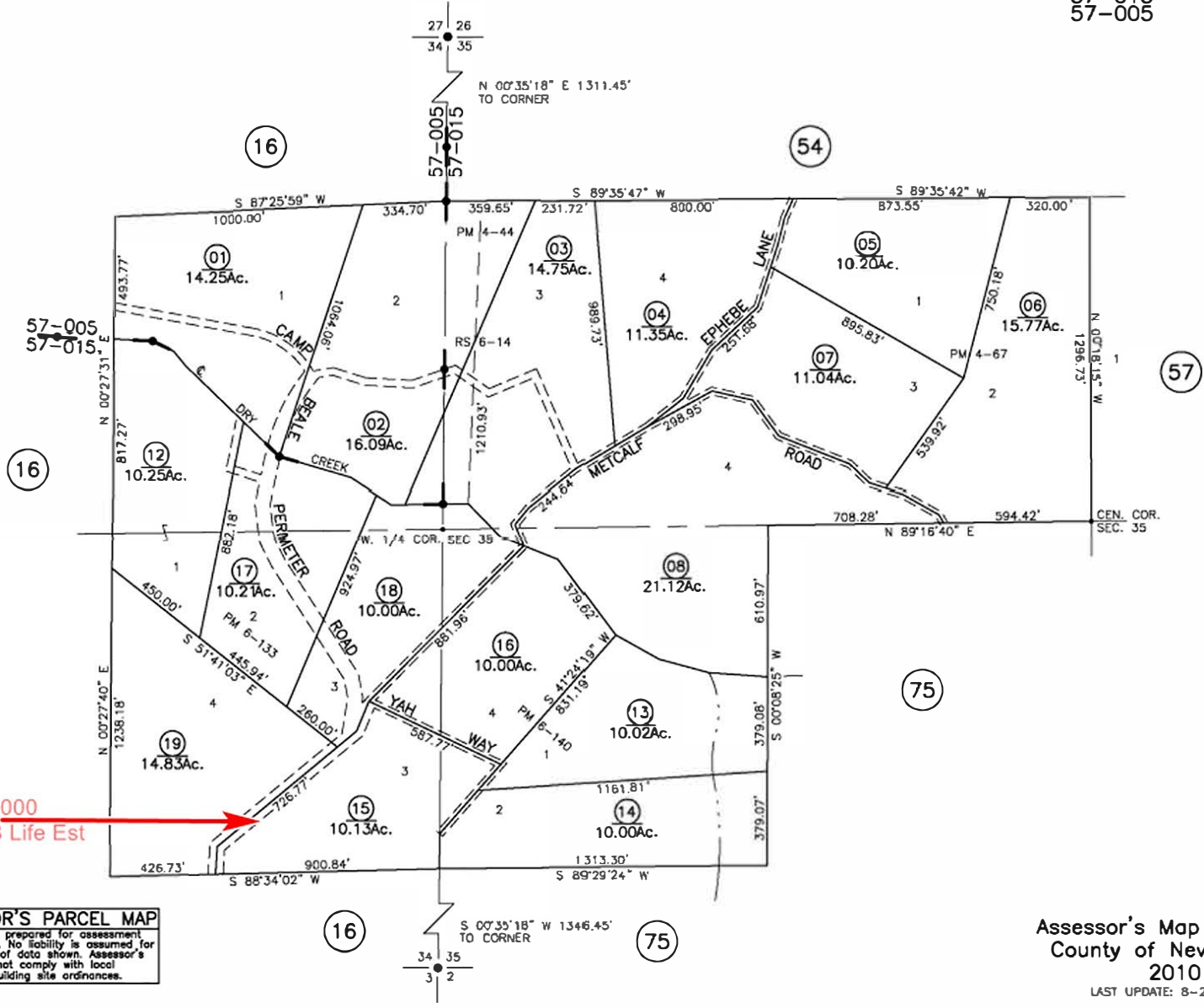
Assessor's Map Bk. 1 -Pg. 17
 County of Nevada, Calif.
 2011

LAST UPDATE: 2-12-16 TM 02/16

PTNS. SEC. 35 & SEC. 36, T. 15 N., R. 7 E., M.D.B. & M.

Tax Area Code
57-015
57-005

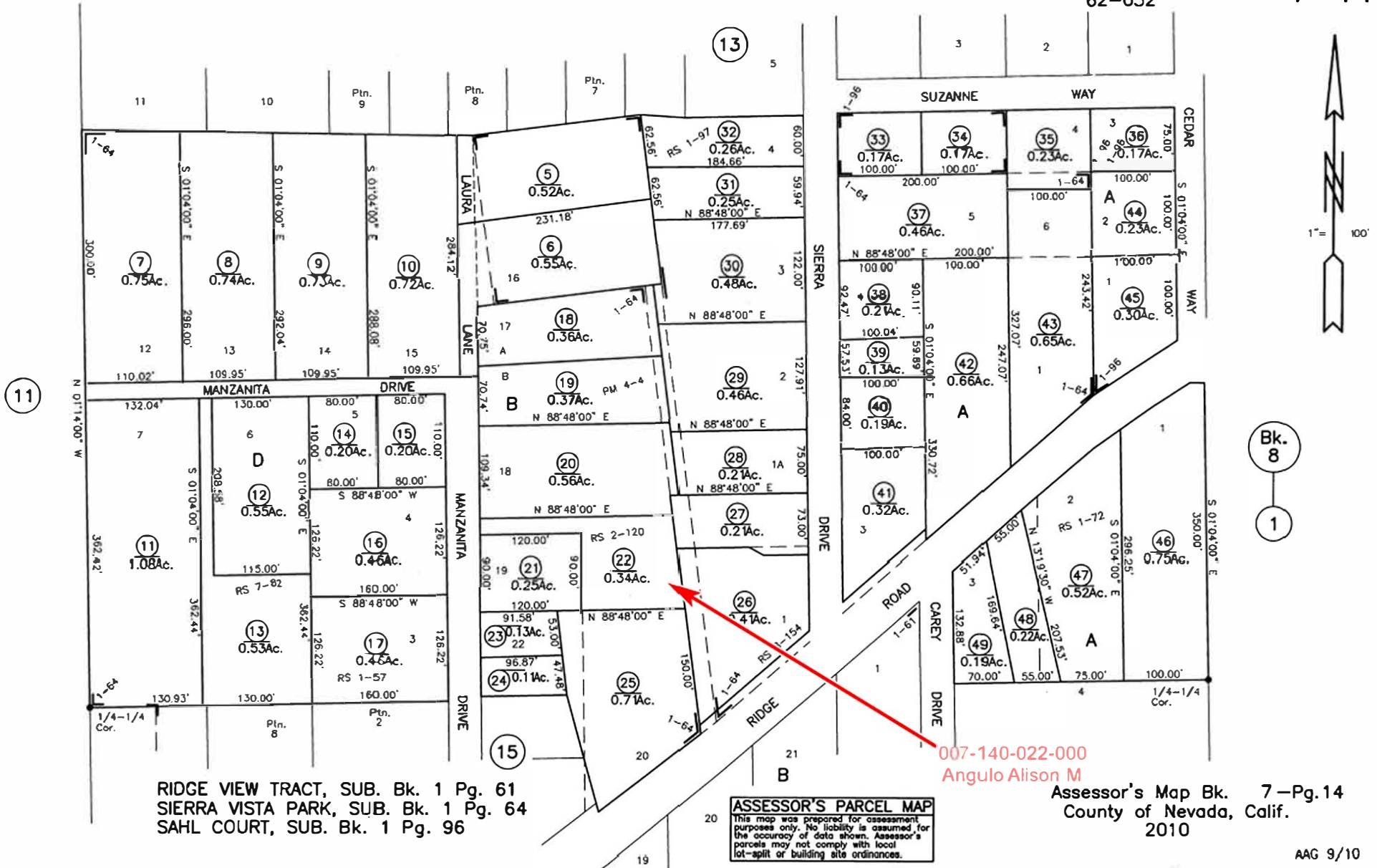
2-56
(Fmly. Ptn. 2-16)



002-560-015-000
Valmoja Richard B Life Est

ASSESSOR'S PARCEL MAP
This map was prepared for assessment purposes only. No liability is assumed for the accuracy of data shown. Assessor's parcels may not comply with local lot-split or building site ordinances.

Assessor's Map Bk. 2 -Pg. 56
County of Nevada, Calif.
2010
LAST UPDATE: 8-24-12 RLV 06/10



RIDGE VIEW TRACT, SUB. Bk. 1 Pg. 61
 SIERRA VISTA PARK, SUB. Bk. 1 Pg. 64
 SAHL COURT, SUB. Bk. 1 Pg. 96

ASSESSOR'S PARCEL MAP
 This map was prepared for assessment purposes only. No liability is assumed for the accuracy of data shown. Assessor's parcels may not comply with local lot-split or building site ordinances.

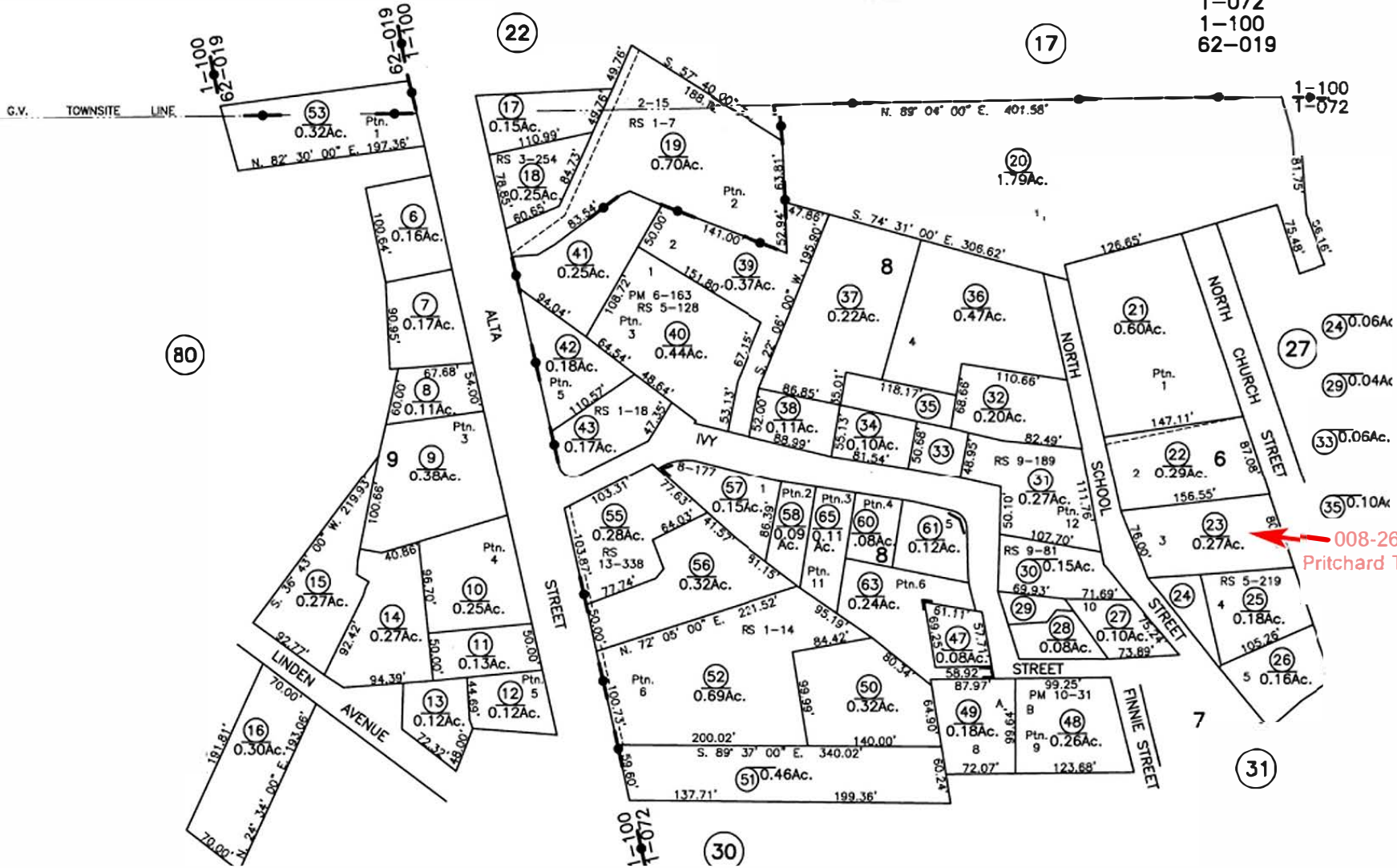
007-140-022-000
 Angulo Alison M

Assessor's Map Bk. 7-Pg.14
 County of Nevada, Calif.
 2010

CITY OF GRASS VALLEY

Tax Area Code
1-072
1-100
62-019

8-26



ALTA HILL VILLAGE SUB. Bk. 8, Pg. 177
GRASS VALLEY ANNEX No. 18 R.S. Bk. 2, Pg. 15
GRASS VALLEY TOWNSITE

ASSESSOR'S PARCEL MAP
This map was prepared for assessment purposes only. No liability is assumed for the accuracy of data shown. Assessor's parcels may not comply with local lot-split or building site ordinances.

1-1-02
1-1-07
1-1-08
Assessor's Mcp Bk. 8 -Pg.26
County of Nevada, Calif.
2001
LAST UPDATE 7-21-09
NW 12/01



009-400-027-000
Aldridge Pauline F Trste

ASSESSOR'S PARCEL MAP
This map was prepared for assessment purposes only. No liability is assumed for the accuracy of data shown. Assessor's parcels may not comply with local lot-split or building site ordinances.

UNION HILL SUB. No. 1, Bk. 1, Pg. 59
UNION HILL SUB. No. 2, Bk. 1, Pg. 71

1-1-04 Assessor's Map Bk. 9 -Pg. 40
County of Nevada, Calif.
2003

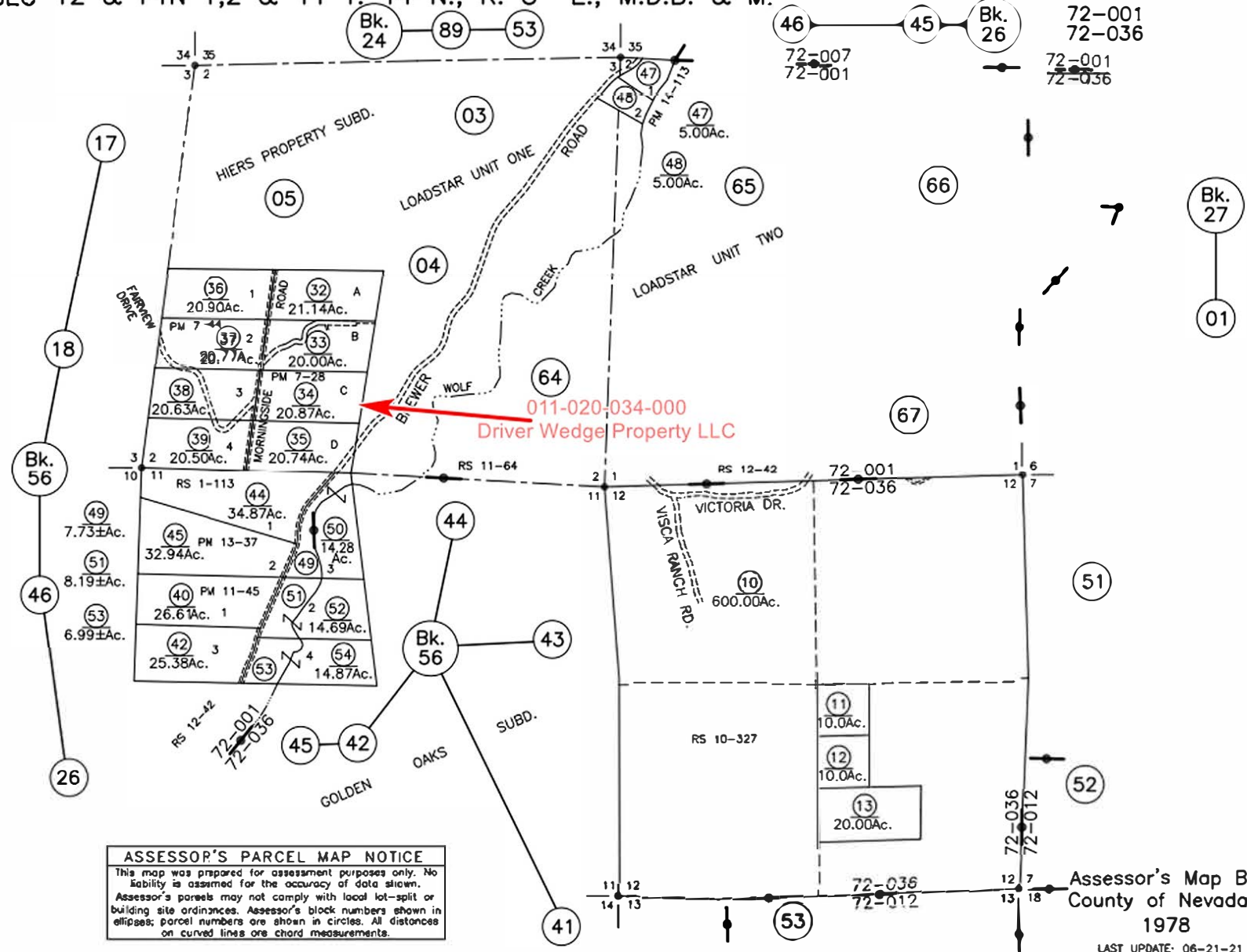
LAST UPDATE 3-18-09 NW 7/03

E 1/4 Cor.
Sec. 35

SEC 12 & PTN 1,2 & 11 T. 14 N., R. 8 E., M.D.B. & M.

Tax Area Code
 72-001
 72-036
 72-001
 72-036

11-02



ASSESSOR'S PARCEL MAP NOTICE
 This map was prepared for assessment purposes only. No liability is assumed for the accuracy of data shown. Assessor's parcels may not comply with local lot-split or building site ordinances. Assessor's block numbers shown in ellipses; parcel numbers are shown in circles. All distances on curved lines are chord measurements.

Assessor's Map Bk.11-Pg. 02
 County of Nevada, Calif.
 1978

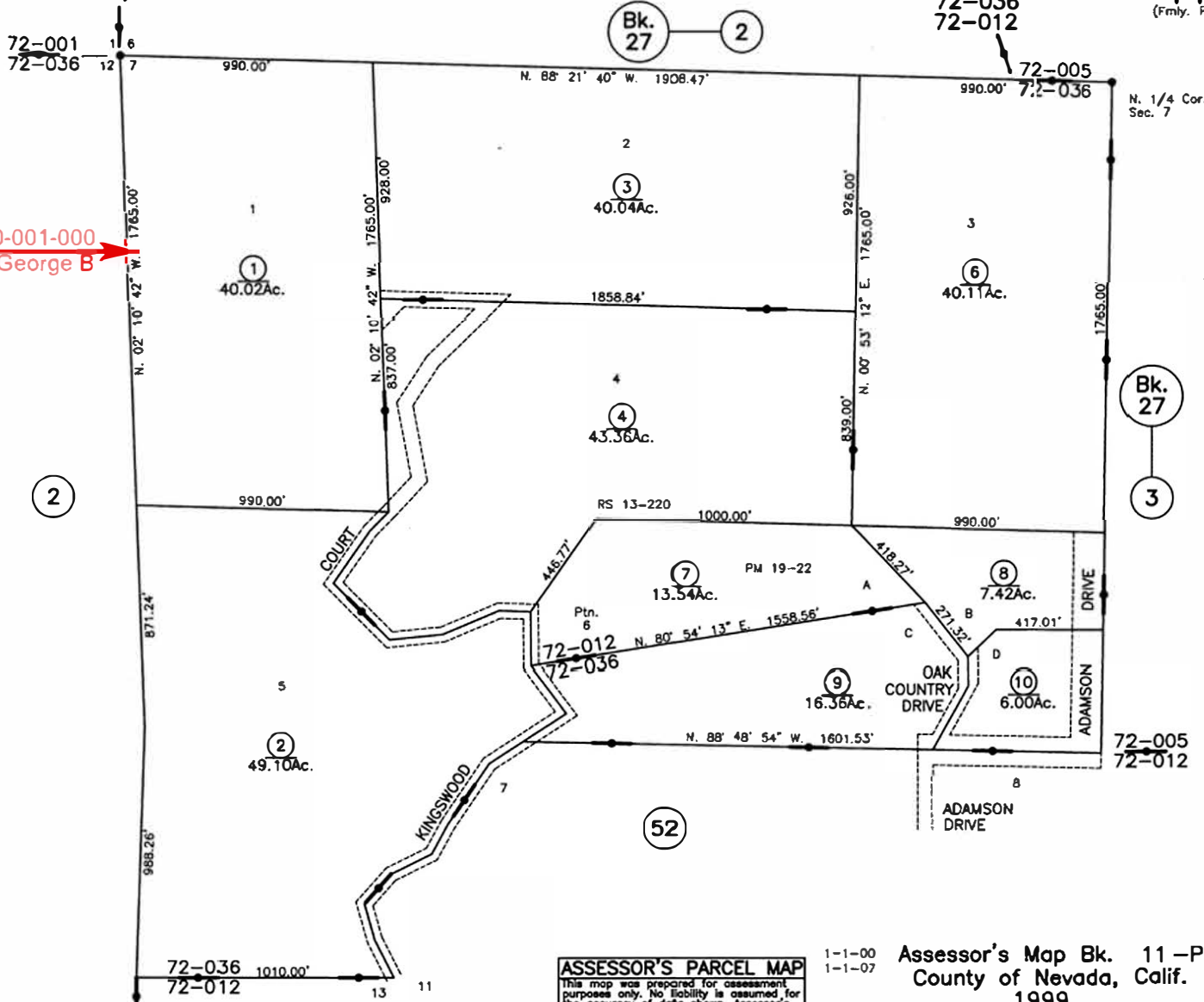
LAST UPDATE: 06-21-21 TM 08/16

PTN. N.W. 1/4 SEC. 7, T. 14 N., R. 9 E., M.D.B. & M.

Tax Area Code
72-036
72-012

11-51
(Fmly. Ptn. 11-26)

011-510-001-000
Kucky George B



SIERRA KNOLL ESTATES P.M. Bk. 1, Pg. 180

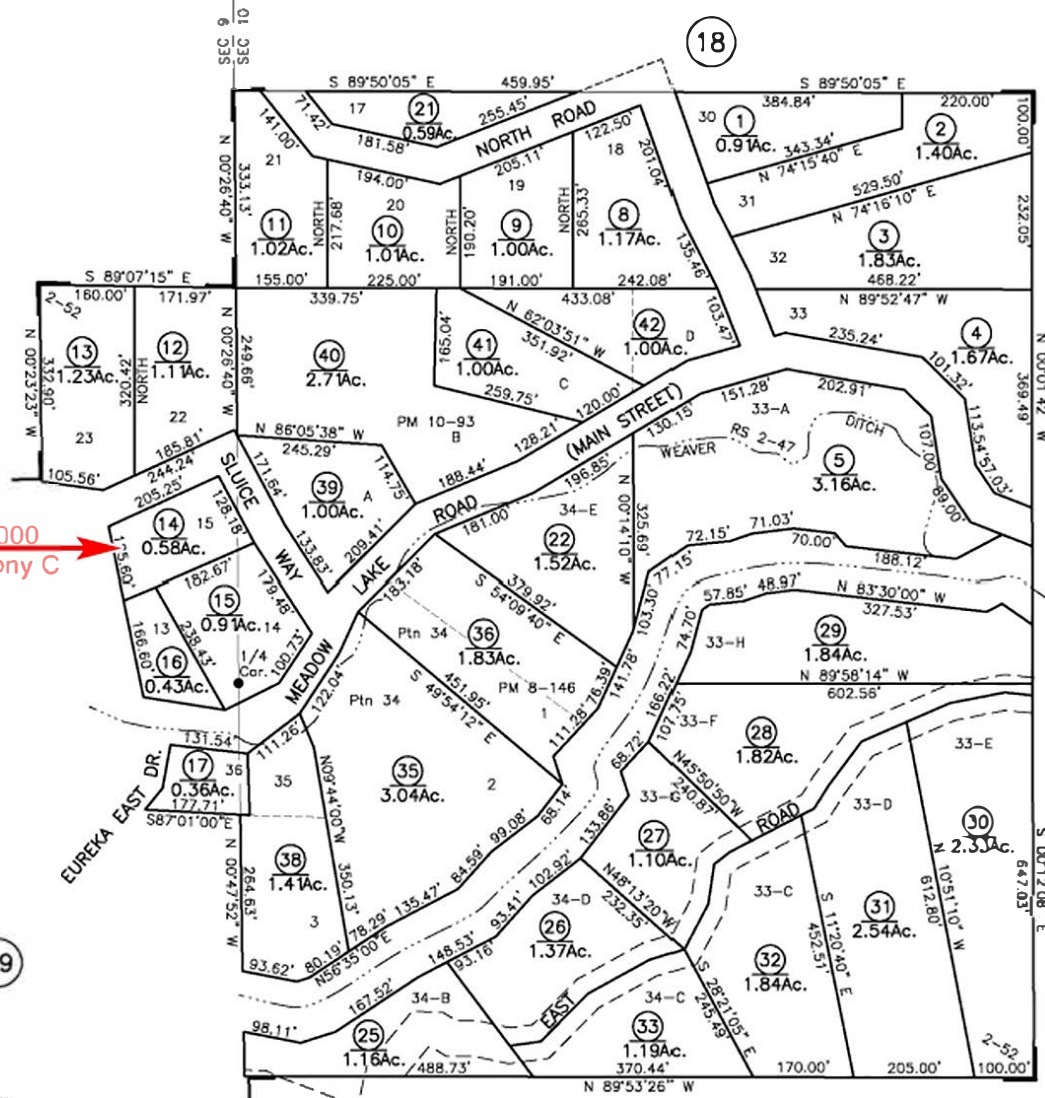
ASSESSOR'S PARCEL MAP
 This map was prepared for assessment purposes only. No liability is assumed for the accuracy of data shown. Assessor's parcels may not comply with local lot-split or building site ordinances.

1-1-00
1-1-07

Assessor's Map Bk. 11-Pg. 51
County of Nevada, Calif.
1999

LAST UPDATE 4-19-10

NW 12/99



013-400-014-000
Saunders Anthony C

ASSESSOR'S PARCEL MAP
This map was prepared for assessment purposes only. No liability is assumed for the accuracy of data shown. Assessor's parcels may not comply with local lot-split or building site ordinances.

GRANITVILLE TOWNSITE RS Bk. 2 Pg. 52
GRANITVILLE RESURVEY (ROADS ONLY) RS Bk. 11 Pg. 360
LOTS 33-A THRU 33-H, 34, 34-B THRU 34-E RS 3-266

3-1-87
3-1-93
1-1-97

Assessor's Map Bk. 13 -Pg. 40
County of Nevada, Calif.

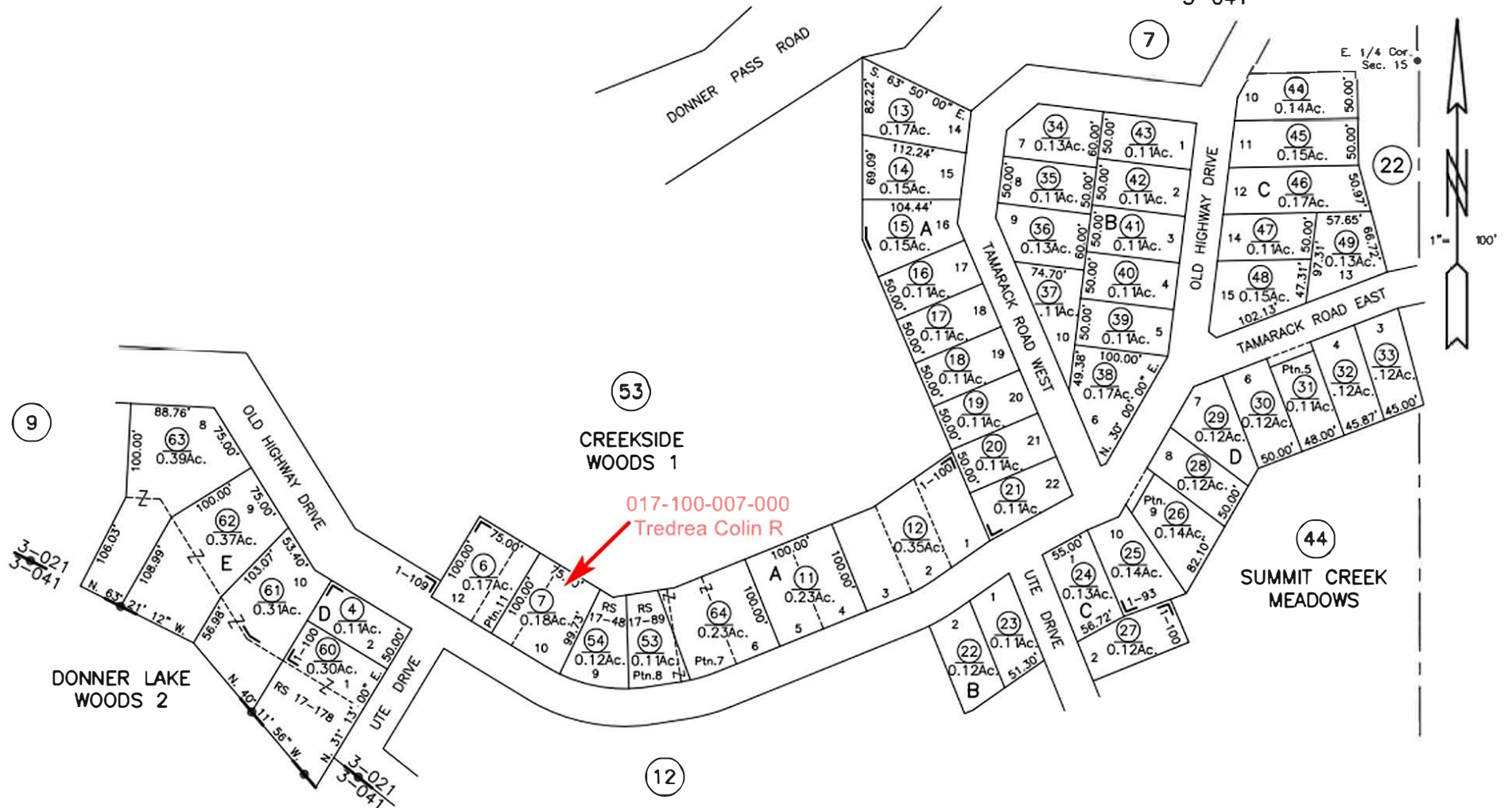
2011
LAST UPDATE 1-1-97

AAG 8/11

PTN. E. 1/2 SEC. 15, T. 17 N., R. 15 E., M.D.B. & M.

Tax Area Code
3-021
3-041

17-10



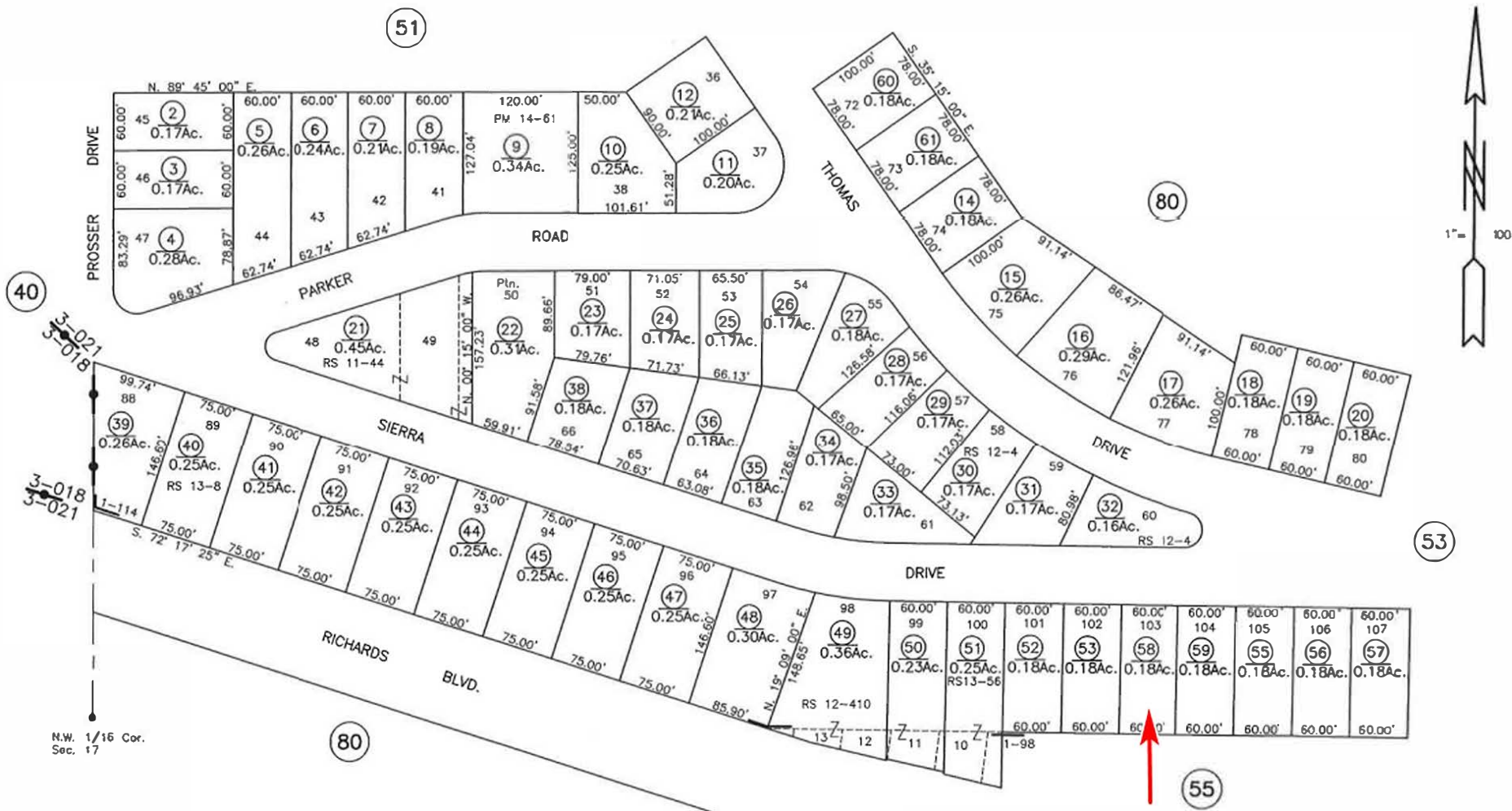
ASSESSOR'S PARCEL MAP NOTICE

This map was prepared for assessment purposes only. No liability is assumed for the accuracy of data shown. Assessor's parcels may not comply with local lot-split or building site ordinances. Assessor's block numbers shown in ellipses; parcel numbers are shown in circles. All distances on curved lines are chord measurements.

DONNER SKI HAVEN SUB. Bk. 1, Pg. 93
EMMONS TRACT SUB. Bk. 1, Pg. 100
TRUCKEE INC. R.S. Bk. 11, Pg. 67
WEEKS TRACT SUB. Bk. 1, Pg. 109

1-1-06
1-1-21

Assessor's Map Bk. 17-Pg. 10
County of Nevada, Calif.
2005



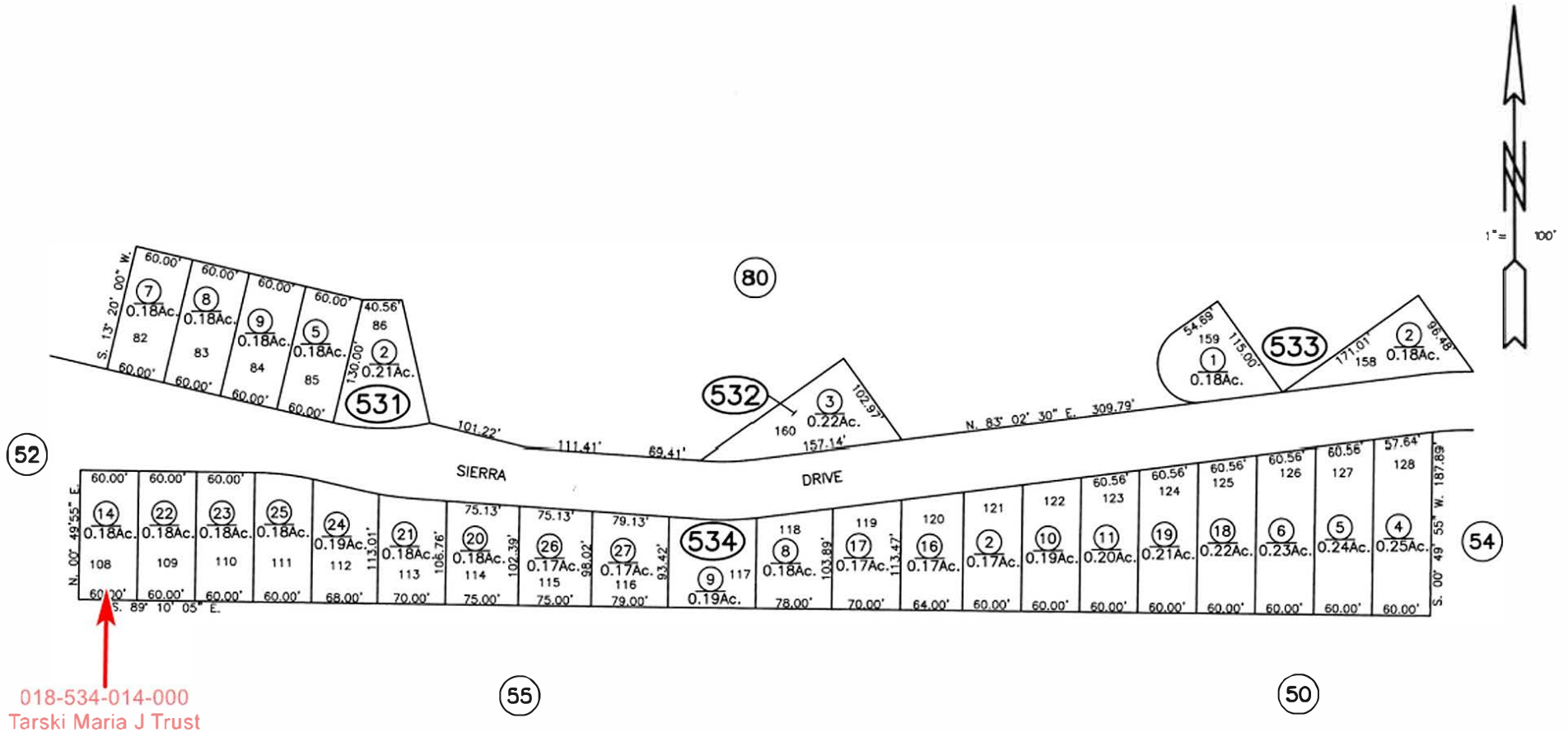
N.W. 1/16 Cor.
Sec. 17

ARMSTRONG SUB. Bk. 1, Pg. 114
DONNER PARK SUB. Bk. 1, Pg. 98
TRUCKEE INC. RS Bk. 11, Pg. 67

ASSESSOR'S PARCEL MAP
This map was prepared for assessment purposes only. No liability is assumed for the accuracy of data shown. Assessor's parcels may not comply with local lot-split or building site ordinances.

018-520-058-000
Buswell Brook

Assessor's Map Bk. 18-Pg.52
County of Nevada, Calif.
2003

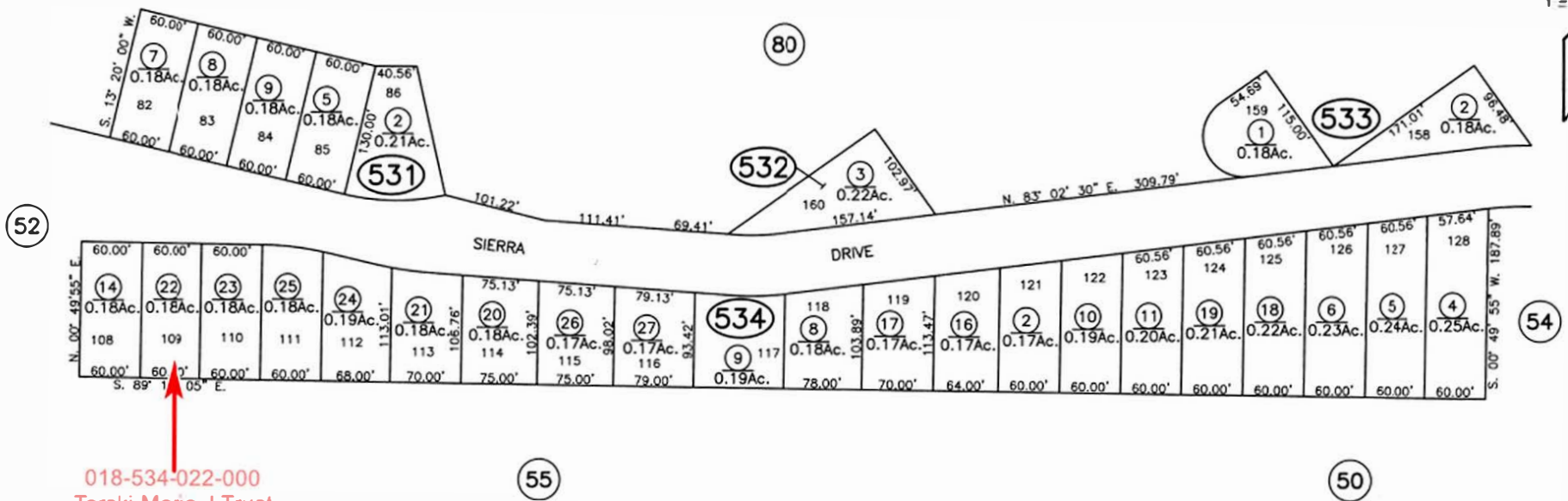


ARMSTRONG SUB. Bk. 1, Pg. 114
 SEE REVERSION SUB. Bk. 5, Pg. 31 (Gone to 18-500-45)
 TRUCKEE INC. R.S. Bk. 11, Pg. 67

ASSESSOR'S PARCEL MAP
 This map was prepared for assessment purposes only. No liability is assumed for the accuracy of data shown. Assessor's parcels may not comply with local lot-split or building site ordinances.

1-1-00
 1-1-02
 1-1-08

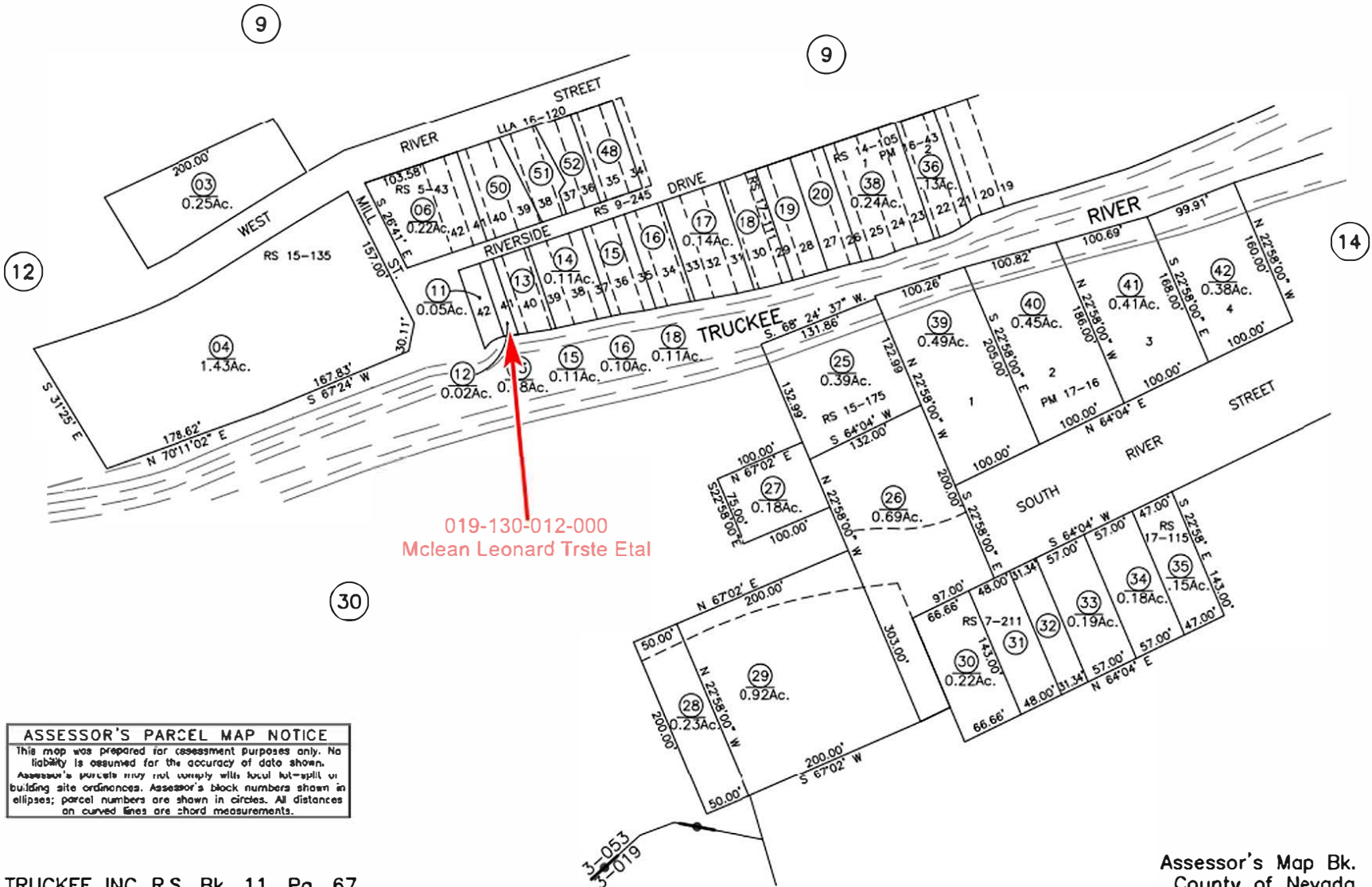
Assessor's Map Bk. 18 -Pg.53
 County of Nevada, Calif.
 1999



ARMSTRONG SUB. Bk. 1, Pg. 114
 SEE REVERSION SUB. Bk. 5, Pg. 31 (Gone to 18-500-45)
 TRUCKEE INC. R.S. Bk. 11, Pg. 67

ASSESSOR'S PARCEL MAP
 This map was prepared for assessment purposes only. No liability is assumed for the accuracy of data shown. Assessor's parcels may not comply with local lot-split or building site ordinances.

1-1-00
 1-1-02
 1-1-08
 Assessor's Map Bk. 18-Pg.53
 County of Nevada, Calif.
 1999



ASSESSOR'S PARCEL MAP NOTICE
 This map was prepared for assessment purposes only. No liability is assumed for the accuracy of data shown. Assessor's parcels may not comply with local lot-split or building site ordinances. Assessor's block numbers shown in ellipses; parcel numbers are shown in circles. All distances on curved lines are chord measurements.

TRUCKEE INC R.S. Bk. 11, Pg. 67
 TRUCKEE ROLL 13

Assessor's Map Bk. 19 -Pg.13
 County of Nevada, Calif.
 2007

PTN. N.E. 1/4 SEC. 23, T. 15 N., R. 8 E., M.D.B. & M.

Tax Area Code
72-001

20-78
(Fmly. Ptn. 10-28)
(Fmly. Ptn. 10-51)
(Fmly. Ptn. 10-80)
(Fmly. Ptn. 20-66)



ALTA SIERRA ESTATES No. 2 SUB. Bk. 2, Pg. 23
 ALTA SIERRA ESTATES No. 10 SUB. Bk. 2, Pg. 105
 REVERSION TO ACREAGE P.M. Bk. 12, Pg. 220
 REVERSION TO ACREAGE P.M. Bk. 14 Pg. 20

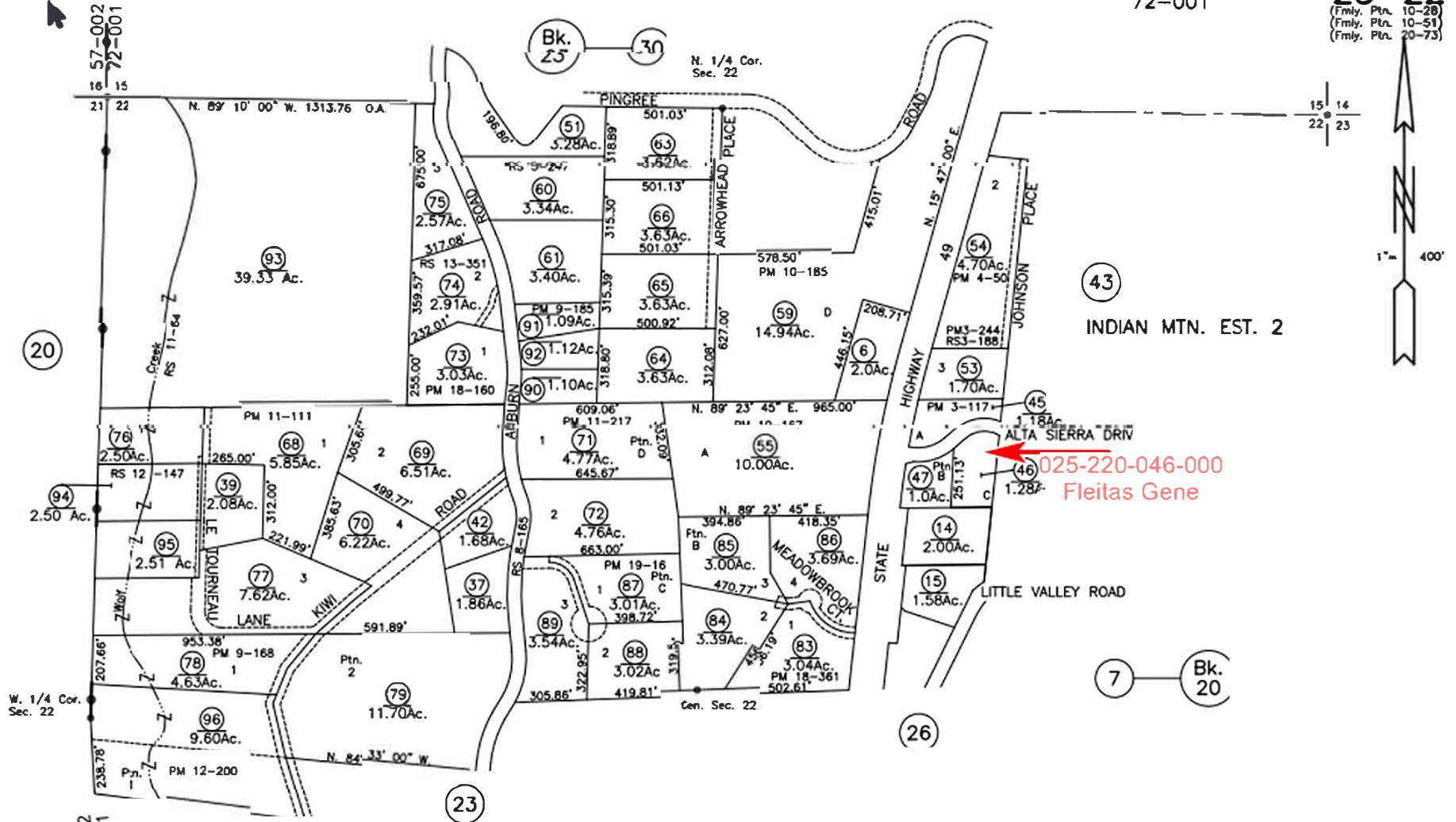
ASSESSOR'S PARCEL MAP
 This map was prepared for assessment purposes only. No liability is assumed for the accuracy of data shown. Assessor's parcels may not comply with local lot-split or building site ordinances.

Assessor's Map Bk. 20-Pg. 78
 County of Nevada, Calif.
 2000

PTN. SEC'S 15 & 22, T. 15 N., R. 8 E., M.D.B. & M.

Tax Area Code
72-001

25-22
(Fmly. Ptn. 10-28)
(Fmly. Ptn. 10-51)
(Fmly. Ptn. 20-73)



025-220-046-000
Fleitas Gene

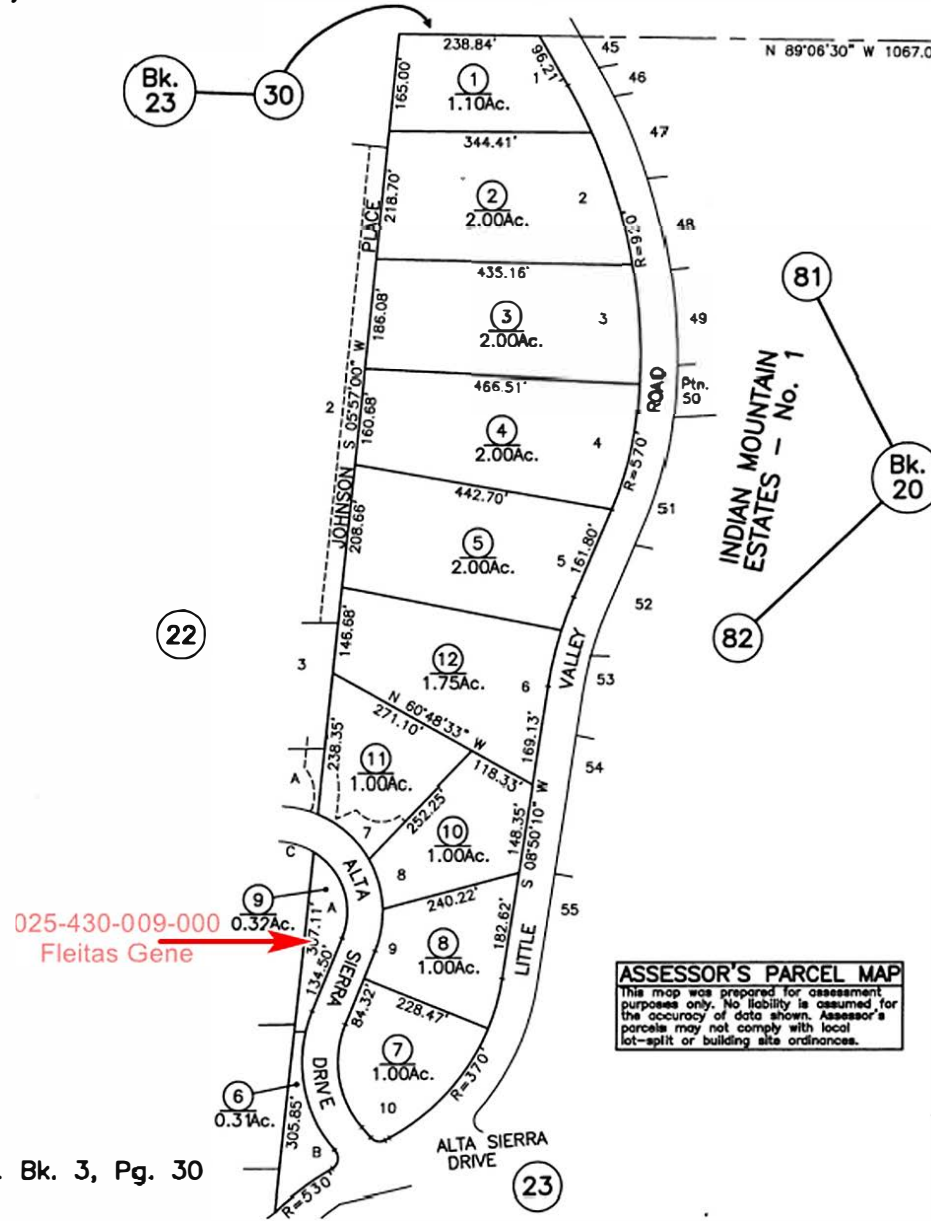
ASSESSOR'S PARCEL MAP NOTICE
 This map was prepared for assessment purposes only. No liability is assumed for the accuracy of data shown. Assessor's parcels may not comply with local lot-split or building site ordinances. Assessor's block numbers shown in ellipses; parcel numbers are shown in circles. All distances on curved lines are chord measurements.

1-1-00
1-1-01
1-1-03
1-1-04
1-1-07
1-1-08
Assessor's Mch Bk. 25 -Pg.22
County of Nevada, Calif.
1999
 LAST UPDATE 6-22-22 NW 12/99

PTN. N.E. 1/4 SEC. 22, T. 15 N., R. 8 E., M.D.B. & M.

Tax Area Code
72-001

25-43
(Fmly. 25-22)



ASSESSOR'S PARCEL MAP
 This map was prepared for assessment purposes only. No liability is assumed for the accuracy of data shown. Assessor's parcels may not comply with local lot-split or building site ordinances.

INDIAN MOUNTAIN ESTATES No. 2, SUB. Bk. 3, Pg. 30

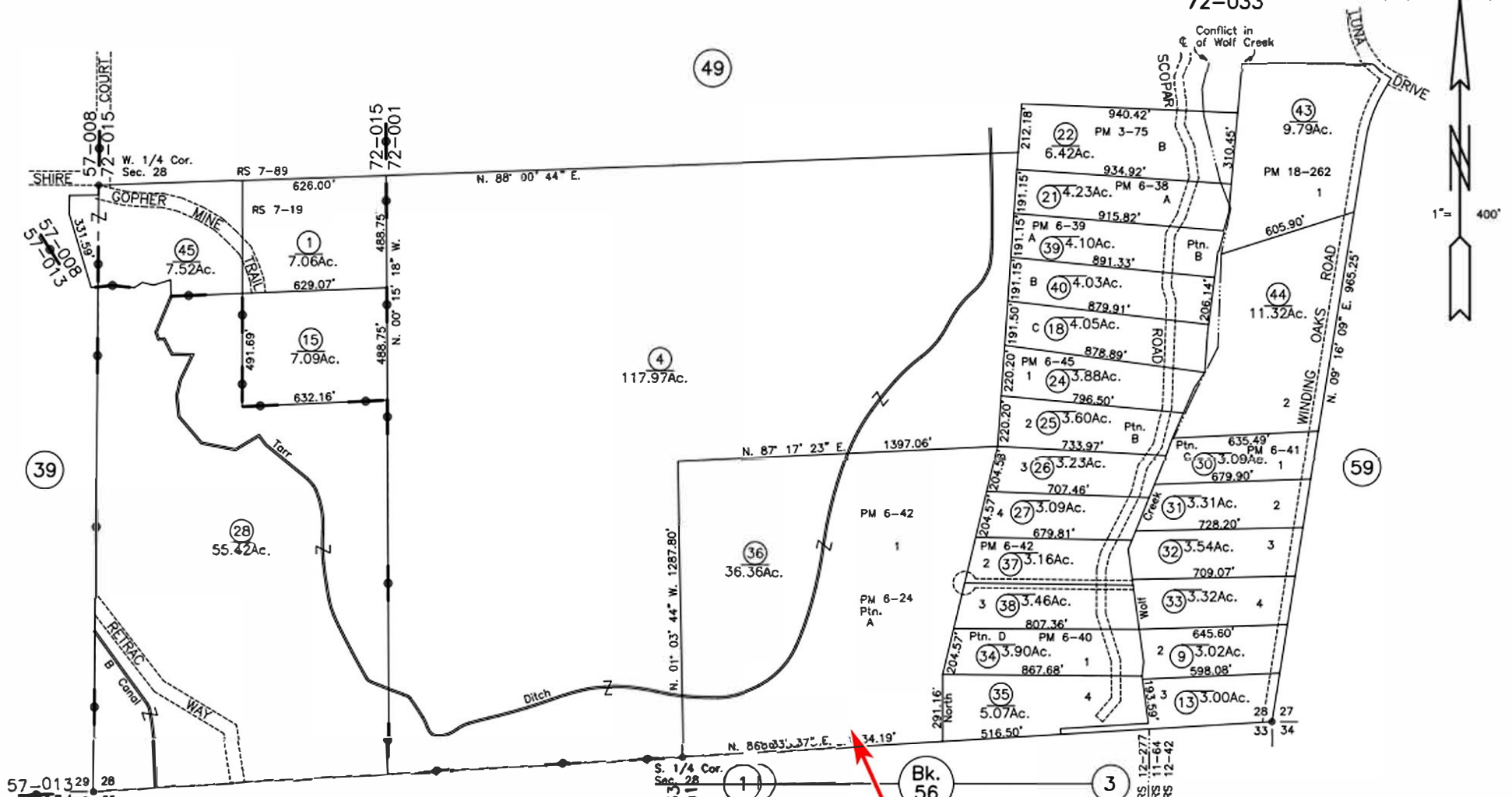
Assessor's Map Bk. 25 -Pg.43
County of Nevada, Calif.
2010

RLW 05/10

PTN. SEC'S 27 & 28 T. 15 N., R. 8 E., M.D.B. & M.

Tax Area Code
 72-001
 72-015
 72-033

25-50
 (Fmly. Ptn. 10-34)
 (Fmly. Ptn. 22-80)
 (Fmly. Ptn. 25-38)



ASSESSOR'S PARCEL MAP NOTICE
 This map was prepared for assessment purposes only. No liability is assumed for the accuracy of data shown. Assessor's parcels may not comply with local lot-split or building site ordinances. Assessor's block numbers shown in ellipses; parcel numbers are shown in circles. All distances on curved lines are chord measurements.

025-500-036-000
 R3enterprises LLC

Assessor's Map Bk. 25 -Pg. 50
 County of Nevada, Calif.
 2002

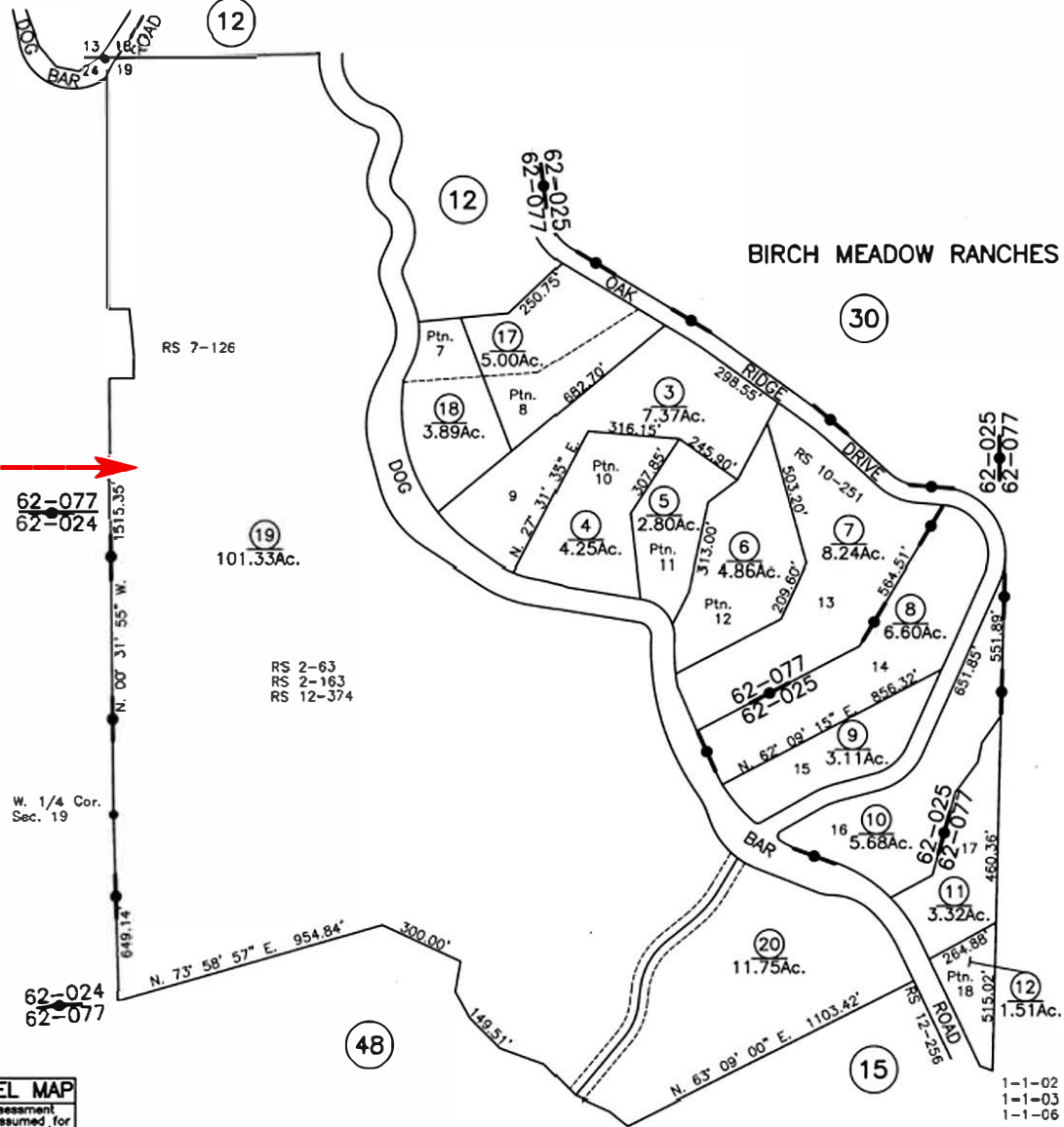
LAST UPDATE 3-16-21 EL NW 12/02

PTN W. 1/2 SEC. 19, T. 15 N., R. 9 E., M.D.B. & M.

Tax Area Code
62-025
62-077

26-13
(Fmly. Ptn. 12-45)
(Fmly. 12-72)

026-130-019-000
Sugarloaf View L/P
C/O Ronald Henricks



ASSESSOR'S PARCEL MAP
 This map was prepared for assessment purposes only. No liability is assumed for the accuracy of data shown. Assessor's parcels may not comply with local lot-split or building site ordinances.

OAK MEADOWS NORTH SUB. Bk. 2, Pg. 96

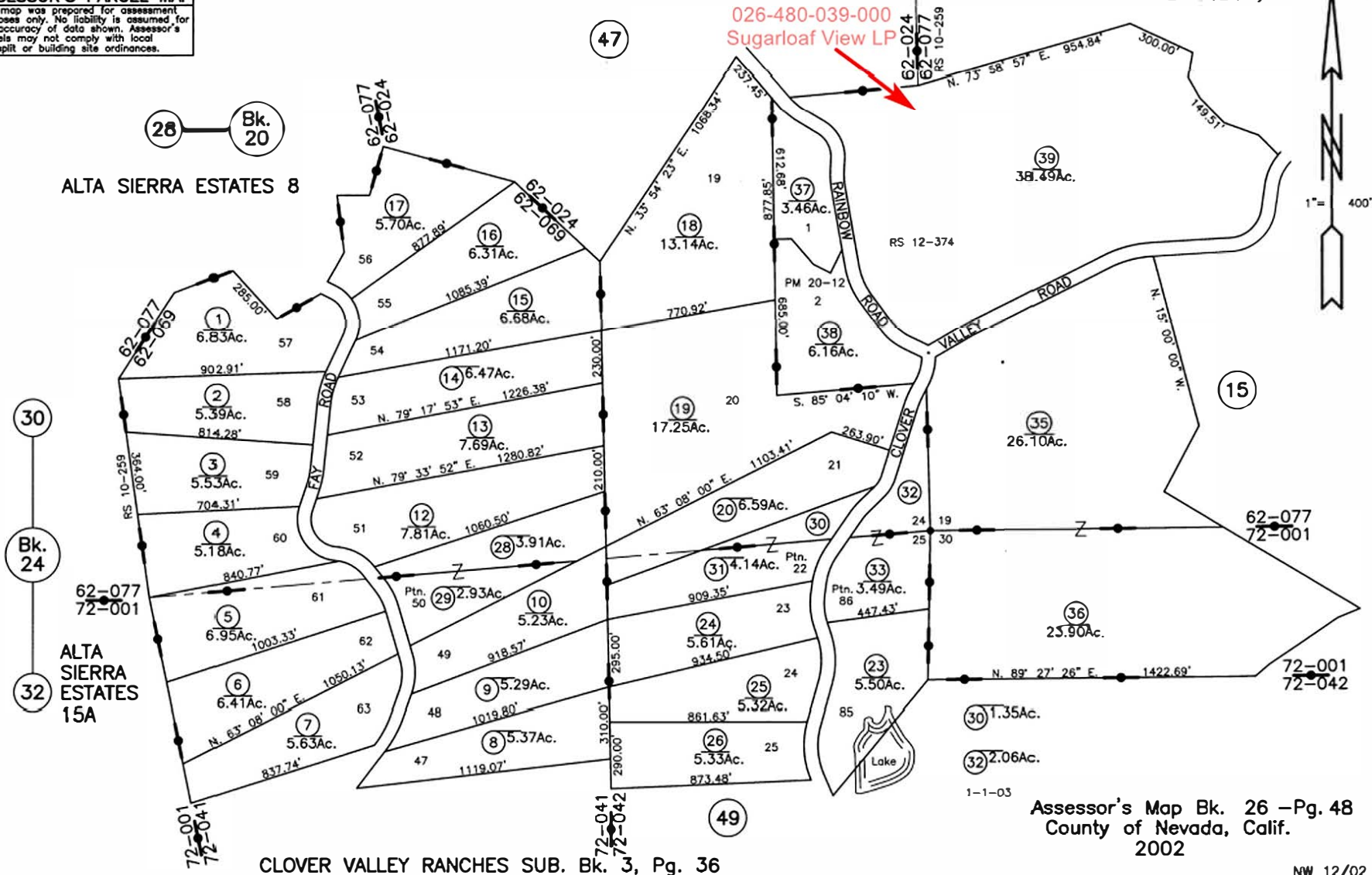
Assessor's Map Bk. 26 -Pg. 13
County of Nevada, Calif.
2001

NW 8/01

PTN. SEC'S 24, 25, T. 15 N., R. 8 E. 19, 30, T. 15 N., R. 9 E., M.D.B. & M.

Tax Area Code **26-48**
62-024 72-001 (Fmly. Ptn. 10-28.41)
62-077 72-041 (Fmly. Ptn. 12-45.49)
62-069 72-042 (Fmly. Ptn. 20-65.69)
62-024 72-042 (Fmly. Ptn. 26-25.26)

ASSESSOR'S PARCEL MAP
This map was prepared for assessment purposes only. No liability is assumed for the accuracy of data shown. Assessor's parcels may not comply with local lot-split or building site ordinances.



CLOVER VALLEY RANCHES SUB. Bk. 3, Pg. 36

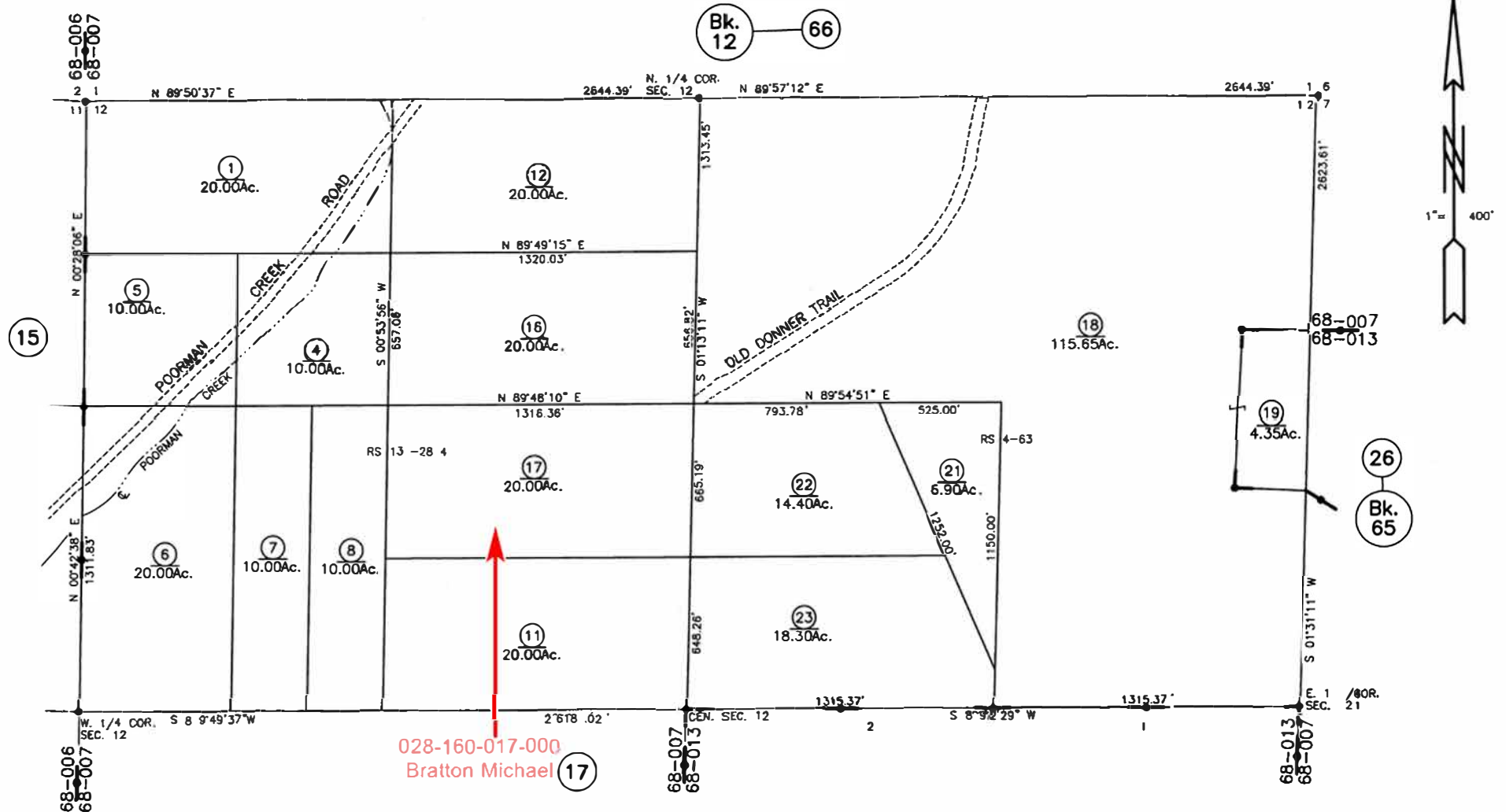
Assessor's Map Bk. 26 -Pg. 48
County of Nevada, Calif.
2002

NW 12/02

N. 1/2 SEC. 12, T. 15 N., R. 9 E., M.D.B. & M.

Tax Area Code
68-007
68-013

28-16
(Fmly. 12-32)



ASSESSOR'S PARCEL MAP
 This map was prepared for assessment purposes only. No liability is assumed for the accuracy of data shown. Assessor's parcels may not comply with local lot-split or building site ordinances.

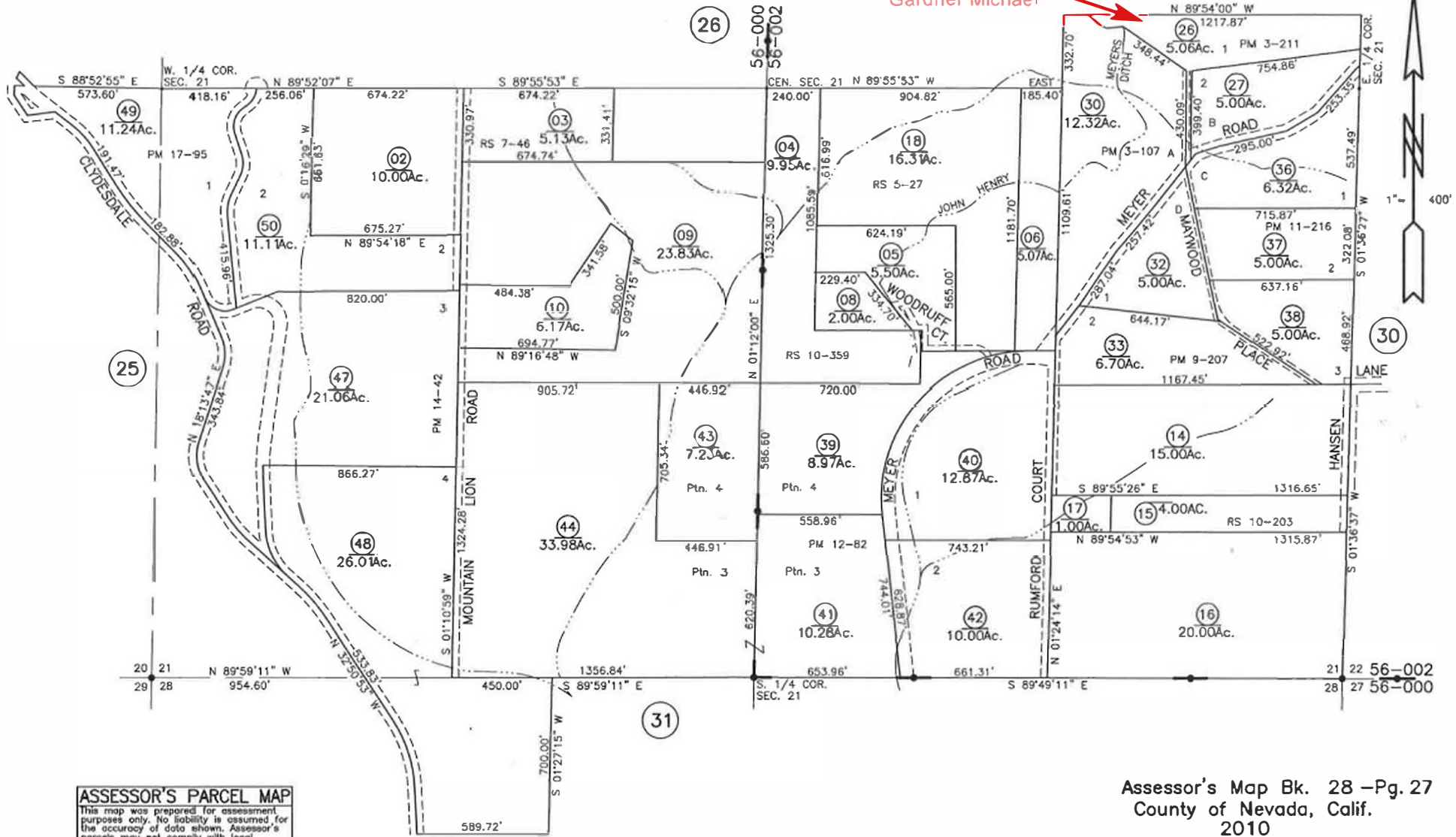
Assessor's Map Bk. 28 -Pg. 16
 County of Nevada, Calif.
 2010

PTNS. SEC. 20, SEC. 21, & SEC. 28, T. 15 N., R. 9 E., M.D.B. & M.

Tax Area Code
56-002
56-000

28-27
(Fmly. 12-48)

028-270-026-000
Gardner Michael



ASSESSOR'S PARCEL MAP
This map was prepared for assessment purposes only. No liability is assumed for the accuracy of data shown. Assessor's parcels may not comply with local lot-split or building site ordinances.

Assessor's Map Bk. 28 -Pg. 27
County of Nevada, Calif.
2010

LAST UPDATE: 12-28-15 TM 12/15

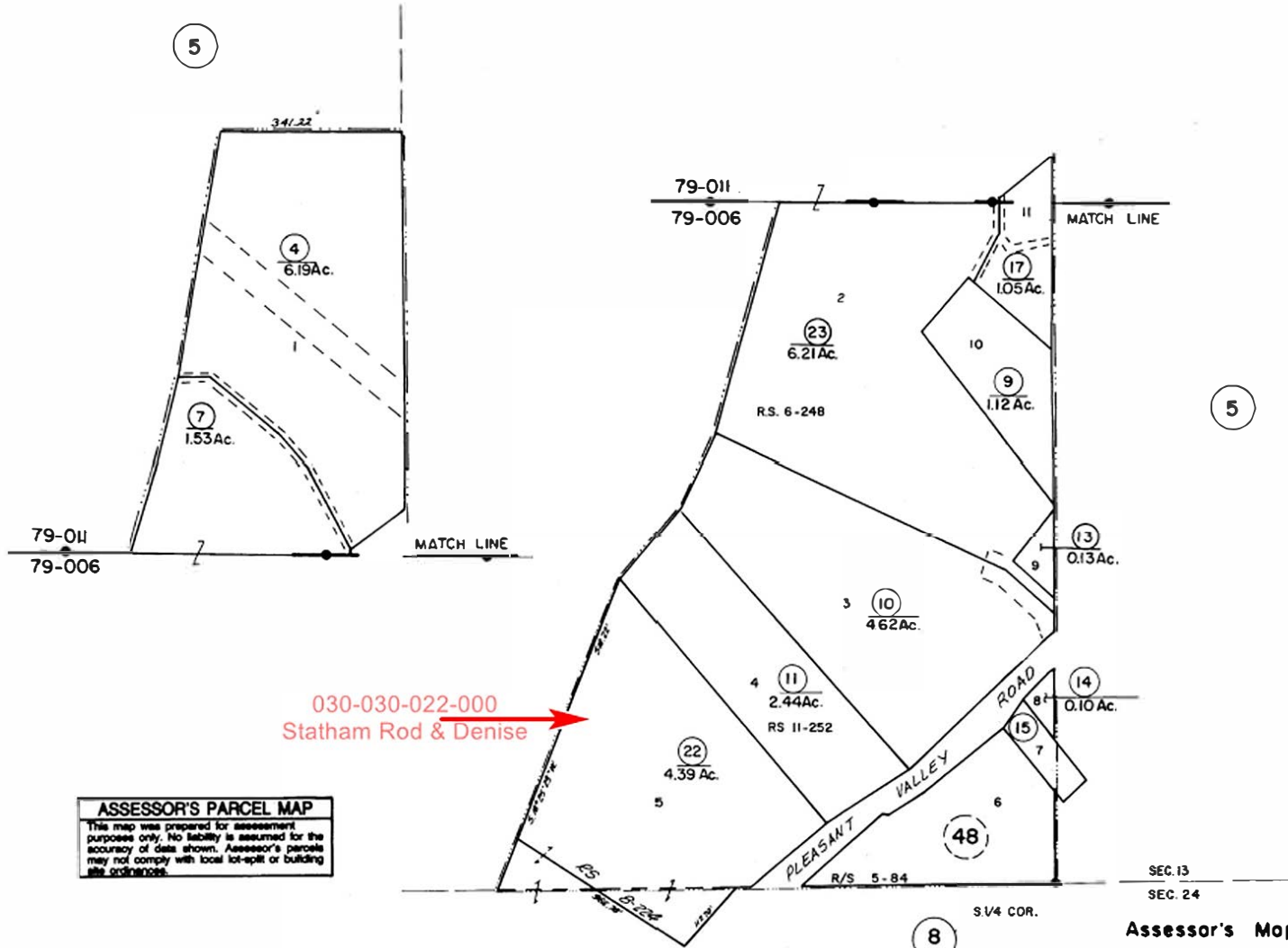
BIRCHVILLE

PTN. SEC'S. 13 & 24, T. 17 N., R. 7 E., M.D.B. & M.

Tax Area Code

79-006
79-011

30-03
(FMLY. 1-16)



030-030-022-000
Statham Rod & Denise

ASSESSOR'S PARCEL MAP
This map was prepared for assessment purposes only. No liability is assumed for the accuracy of data shown. Assessor's parcels may not comply with local lot-split or building site ordinances.

BIRCHVILLE, ROLL 5

Assessor's Map Bk. 30 - Pg. 03
County of Nevada, Calif.

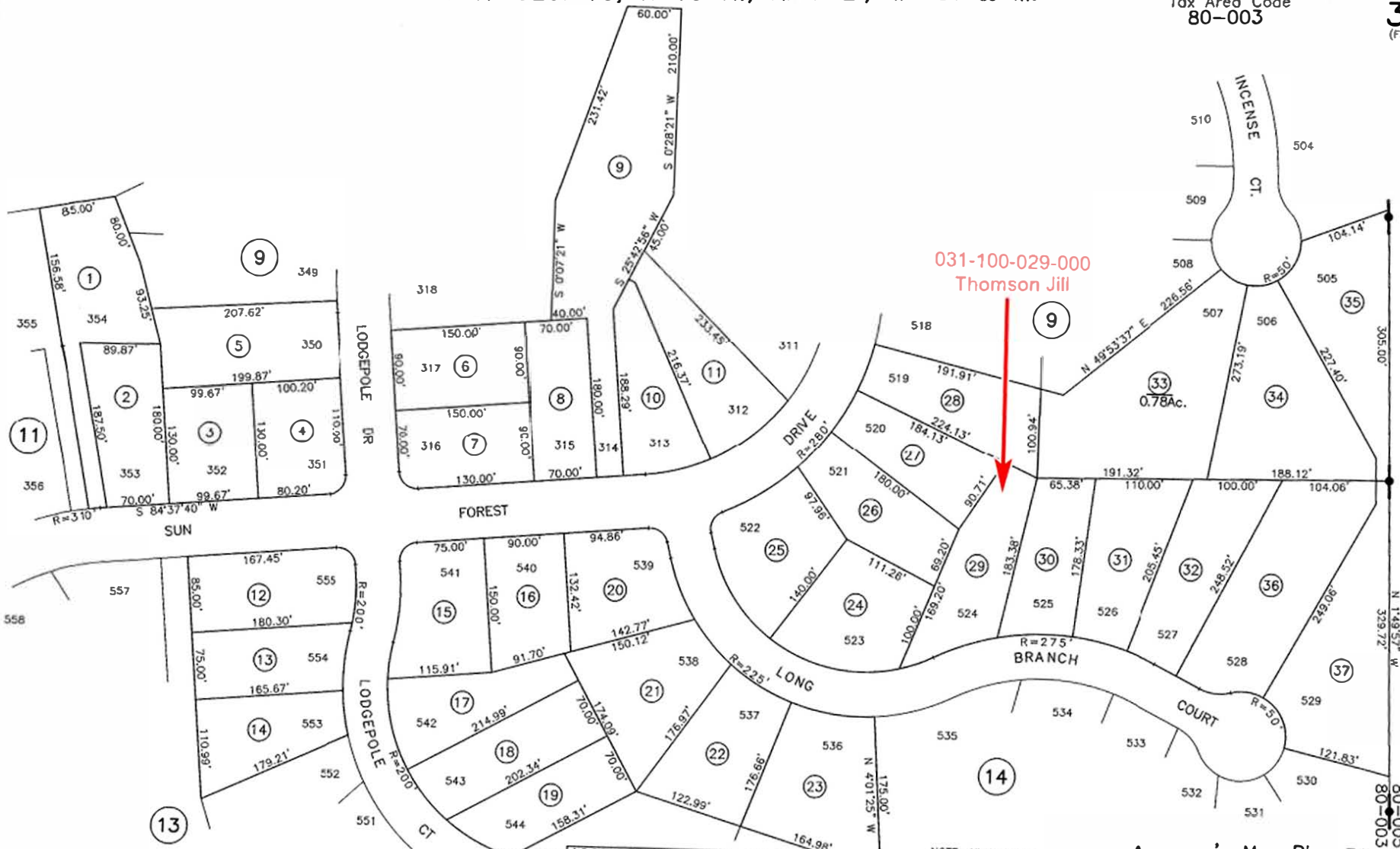
1978 3-1-87
3-1-91
3-1-96
3-1-85 1-1-97

11-00 fl

PTN. SEC. 16, T. 16 N., R. 7 E., M.D.B. & M.

Tax Area Code
80-003

31-10
(Fmly. Ptn. 1-27)



Bk. 52
2

LAKE WILDWOOD UNIT No. 1 SUB. Bk. 3, Pg. 38

ASSESSOR'S PARCEL MAP
 This map was prepared for assessment purposes only. No liability is assumed for the accuracy of data shown. Assessor's parcels may not comply with local lot-split or building site ordinances.

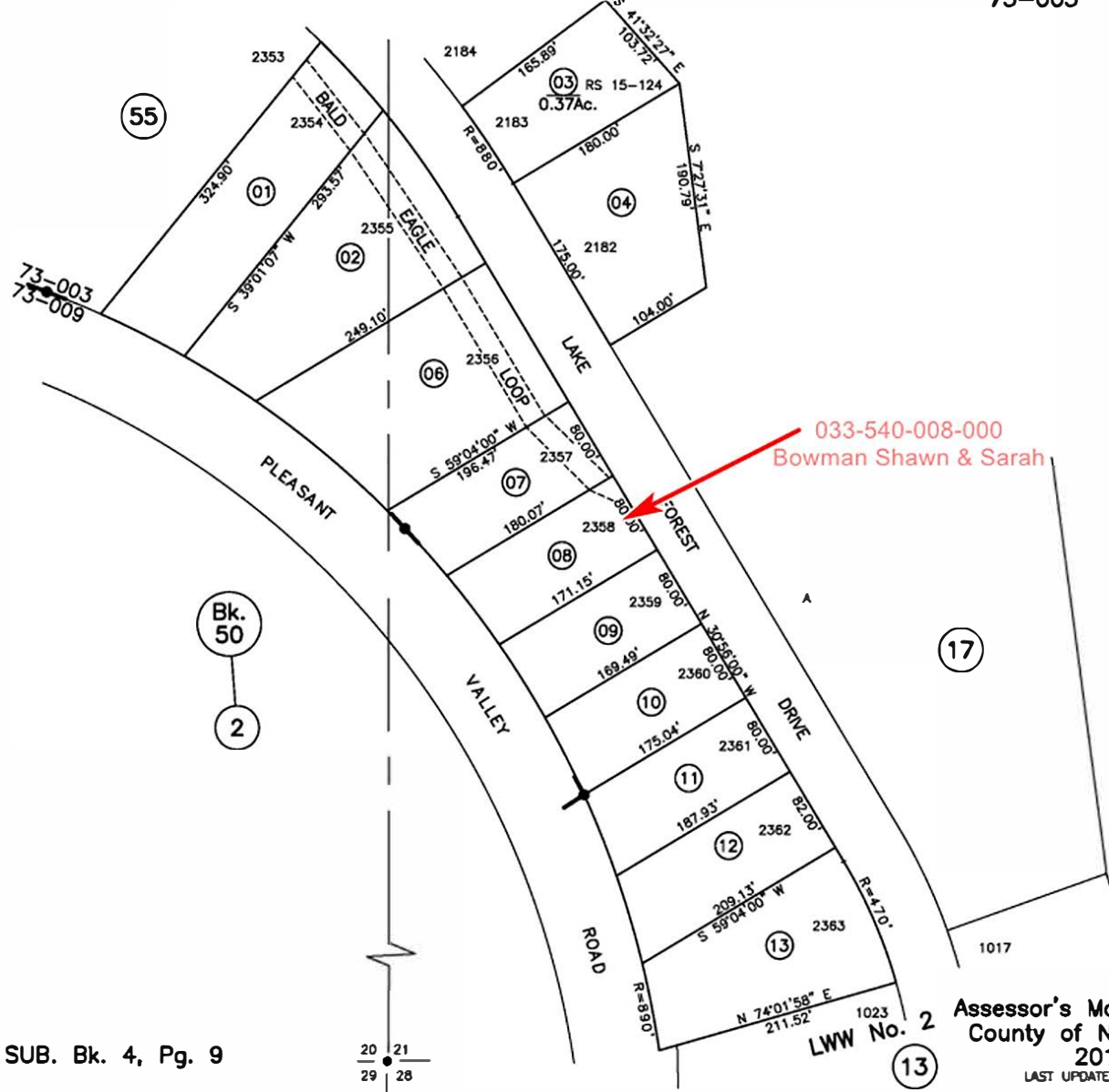
NOTE: All Acres
Calculated 4/24/12

Assessor's Map Bk. 31 - Pg. 10
County of Nevada, Calif.
2010

PTN. SEC'S. 20 & 21, T. 16 N., R. 7 E., M.D.B. & M.

Tax Area Code
73-003

33-54
(Fmly. Ptn. 1-27)



LAKE WILDWOOD UNIT No. 5 SUB. Bk. 4, Pg. 9

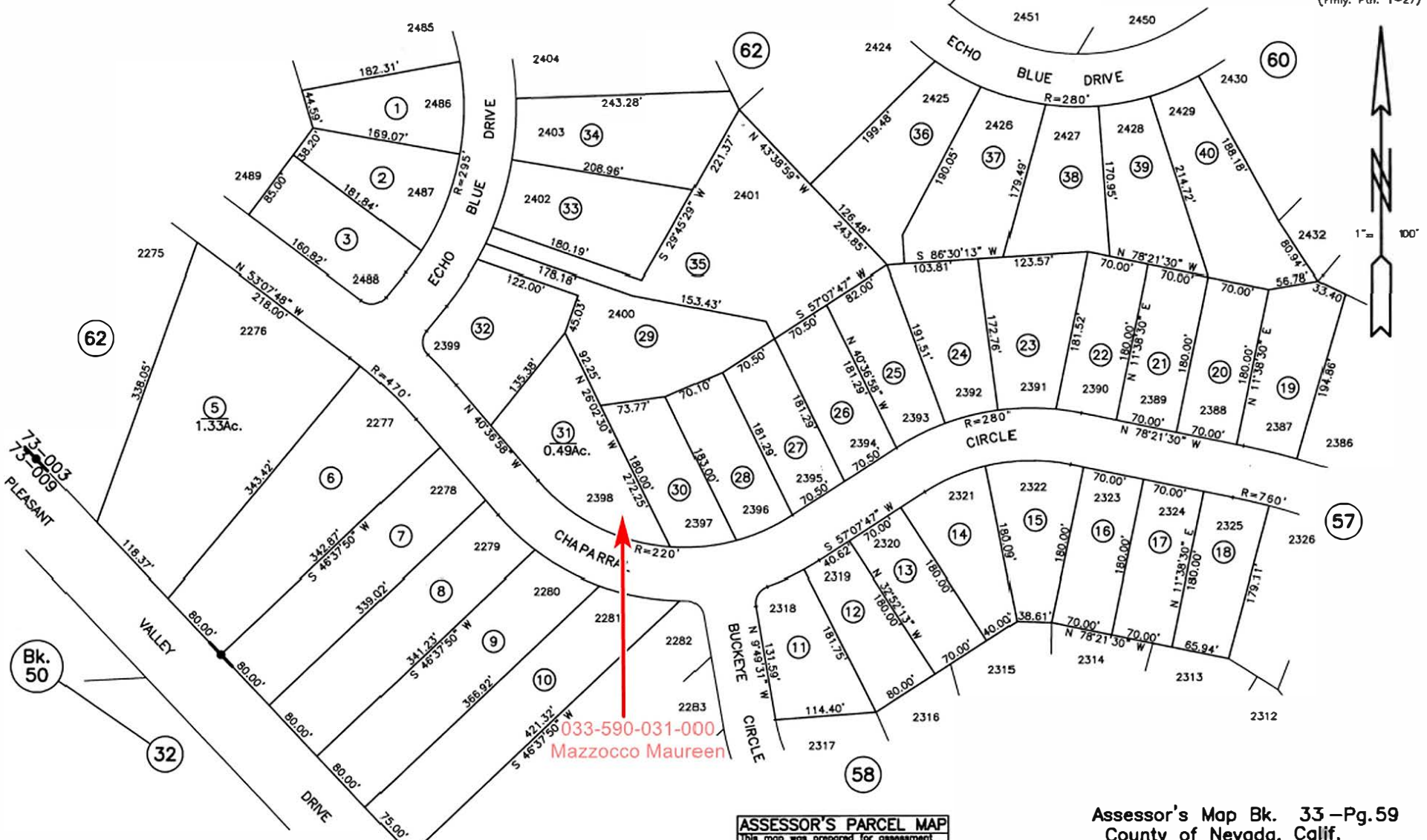
20
29

21
28

Assessor's Map Bk. 33-Pg. 54
County of Nevada, Calif.
2010

LAST UPDATE: 9-9-13

TMc 5/10



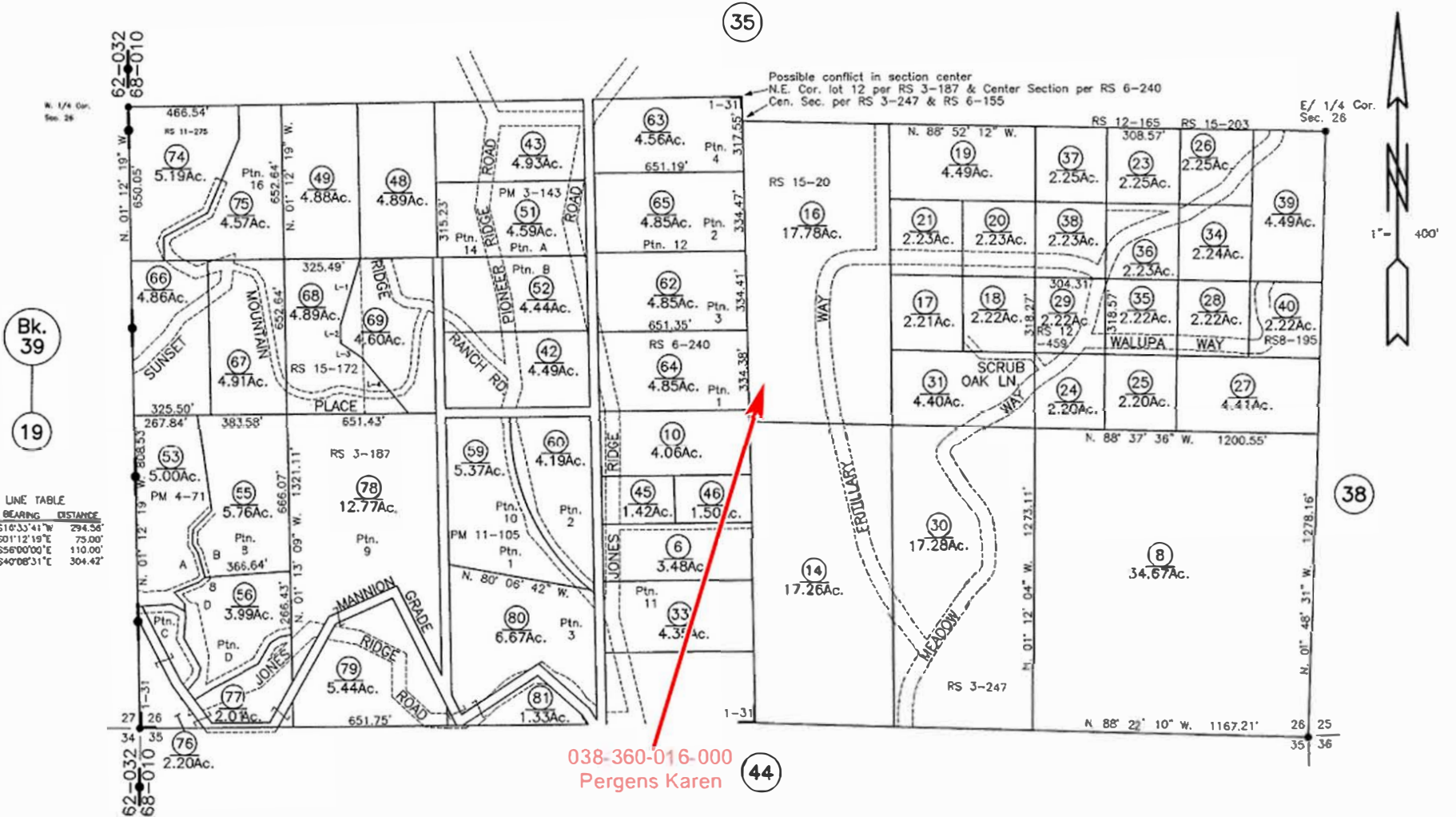
ASSESSOR'S PARCEL MAP
 This map was prepared for assessment purposes only. No liability is assumed for the accuracy of data shown. Assessor's parcels may not comply with local lot-split or building site ordinances.

Assessor's Map Bk. 33-Pg.59
 County of Nevada, Calif.
 2010

S. 1/2 SEC. 26, T. 16 N., R. 9 E., M.D.B. & M.

Tax Area Code
68-010

38-36
(Fmly. Ptn. 6-43)



Bk. 39
19

LINE TABLE

NO.	BEARING	DISTANCE
L-1	S10°33'41"W	294.56'
L-2	S01°12'19"E	75.00'
L-3	S56°00'00"E	110.00'
L-4	S40°08'31"E	304.42'

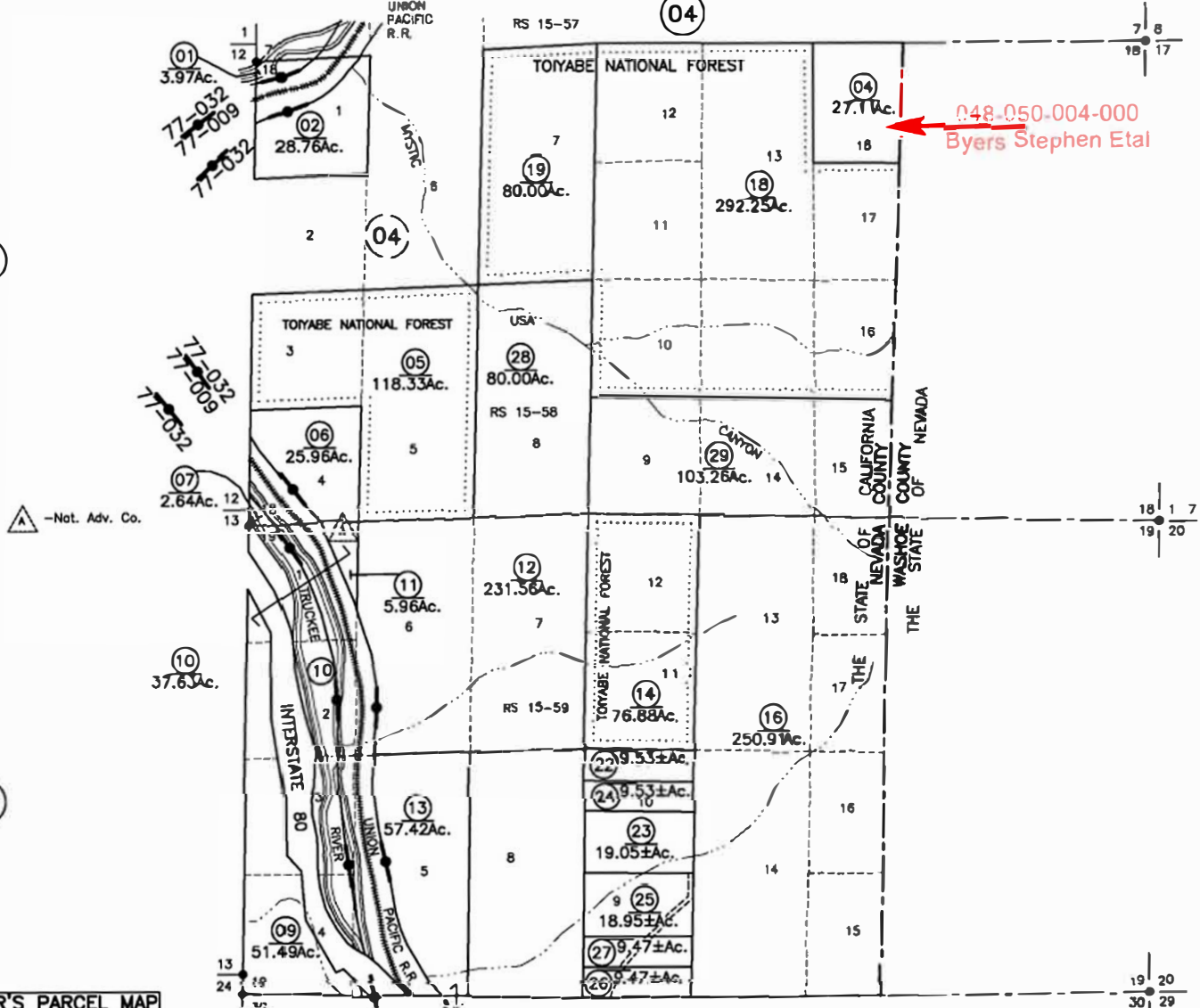
038-360-016-000
Pergens Karen (44)

ASSESSOR'S PARCEL MAP
This map was prepared for assessment purposes only. No liability is assumed for the accuracy of data shown. Assessor's parcels may not comply with local lot-split or building site ordinances.

PTN SEC'S 18 & 19, T. 18 N., R. 18 E., M.D.B. & M.

Tax Area Code
79-032
79-009

48-05
(Fmly. 16-26)



ASSESSOR'S PARCEL MAP
This map was prepared for assessment purposes only. No liability is assumed for the accuracy of data shown. Assessor's parcels may not comply with local lot-split or building site ordinances.

RECORD OF SURVEY Bk. 15, Pg. 58
RECORD OF SURVEY Bk. 15, Pg. 59

3-1-85
3-1-89

3-1-90
1-1-97
1-1-98

Assessor's Map Bk. 48 -Pg. 05
County of Nevada, Calif.
1962

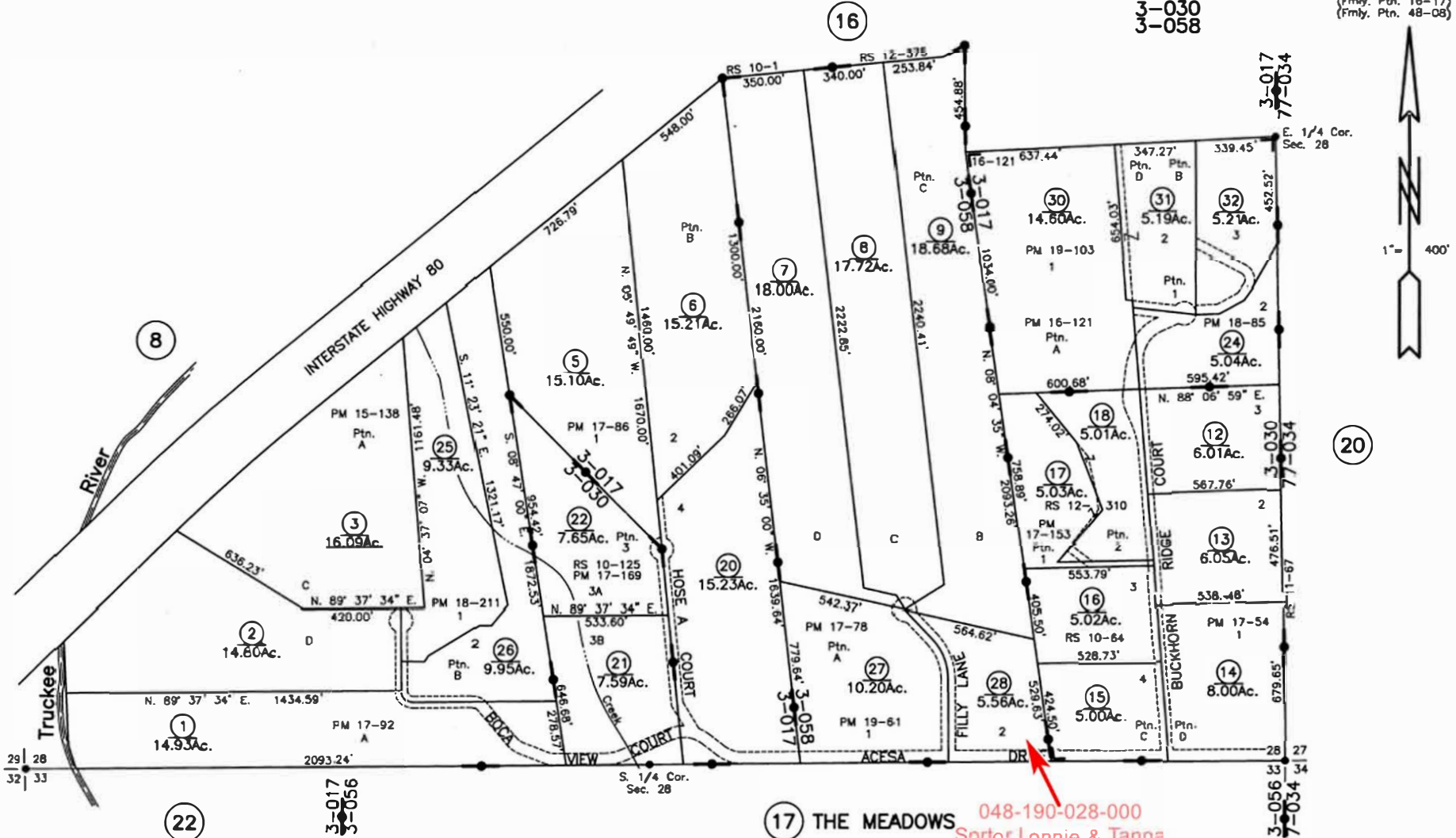
LAST UPDATE: 1-1-08

AAG 3/13

PTN. SEC. 28, T. 18 N., R. 17 E., M.D.B. & M.

Tax Area Code
3-017
3-030
3-058

48-19
(Fmly. Ptn. 16-17)
(Fmly. Ptn. 48-08)



BUCKHORN RIDGE P.M. Bk. 16, Pg. 121
TRUCKEE INC. R.S. Bk. 11, Pg. 67

17 THE MEADOWS 048-190-028-000
Sortor Lonnie & Tanna

ASSESSOR'S PARCEL MAP
 This map was prepared for assessment purposes only. No liability is assumed for the accuracy of data shown. Assessor's parcels may not comply with local lot-split or building site ordinances.

1-1-02
1-1-03
1-1-04

Assessor's Map Bk. 48 -Pg. 19
County of Nevada, Calif.
2001

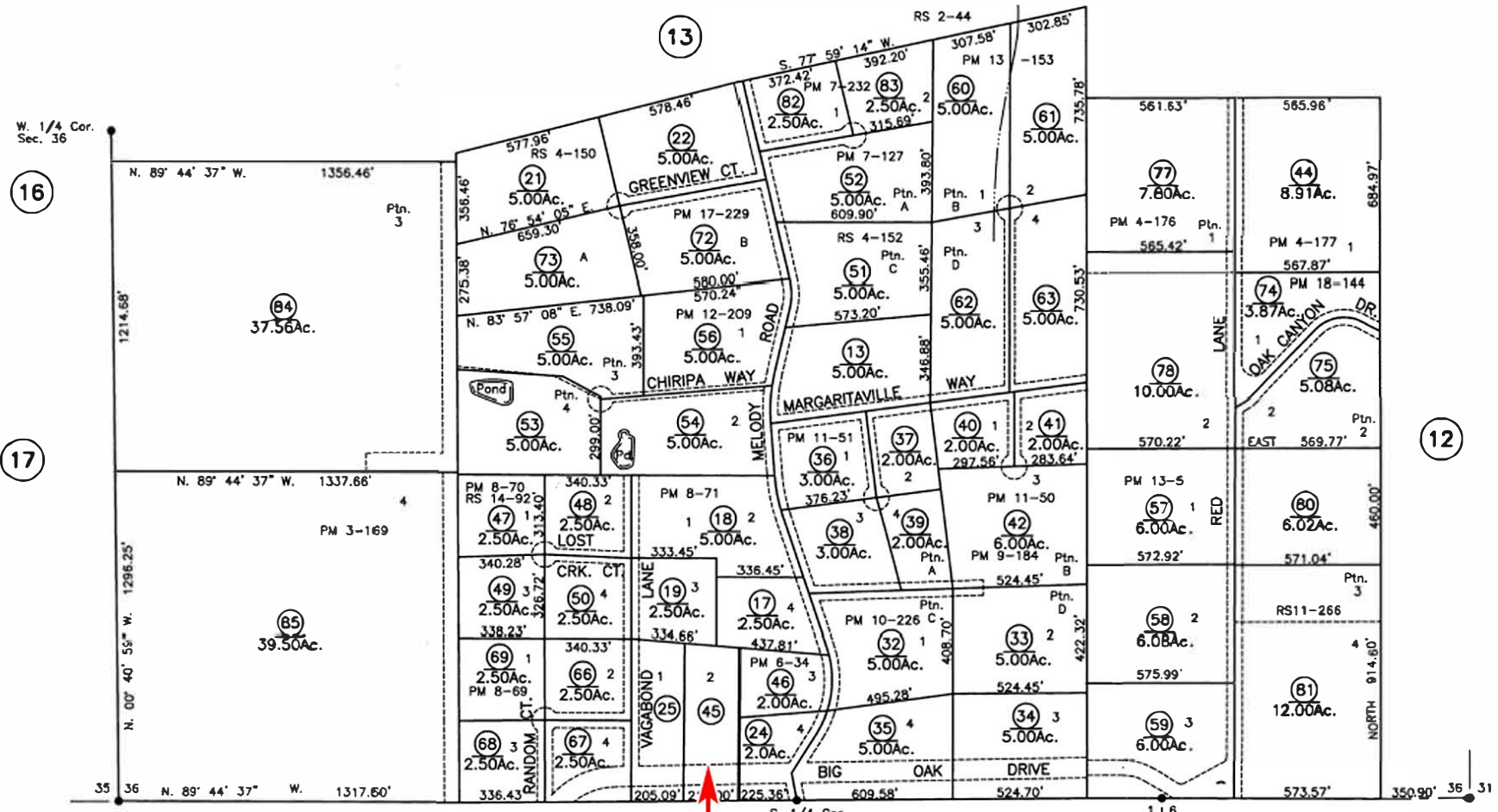
LAST UPDATE 4-21-10

DLB 6/01

PTN. SEC. 36, T. 16 N., R. 6 E., M.D.B. & M.

Tax Area Code
73-009

50-14
(Fmly. Ptn. 1-08)
(Fmly. 1-06)



22

25
3.00Ac. 3.00Ac.
050-140-045-000
Fontaine Joshua

25

ASSESSOR'S PARCEL MAP
This map was prepared for assessment purposes only. No liability is assumed for the accuracy of data shown. Assessor's parcels may not comply with local lot-split or building site ordinances.

1-1-00
1-1-04
1-1-05

Assessor's Map Bk. 50 -Pg. 14
County of Nevada, Calif.
1999

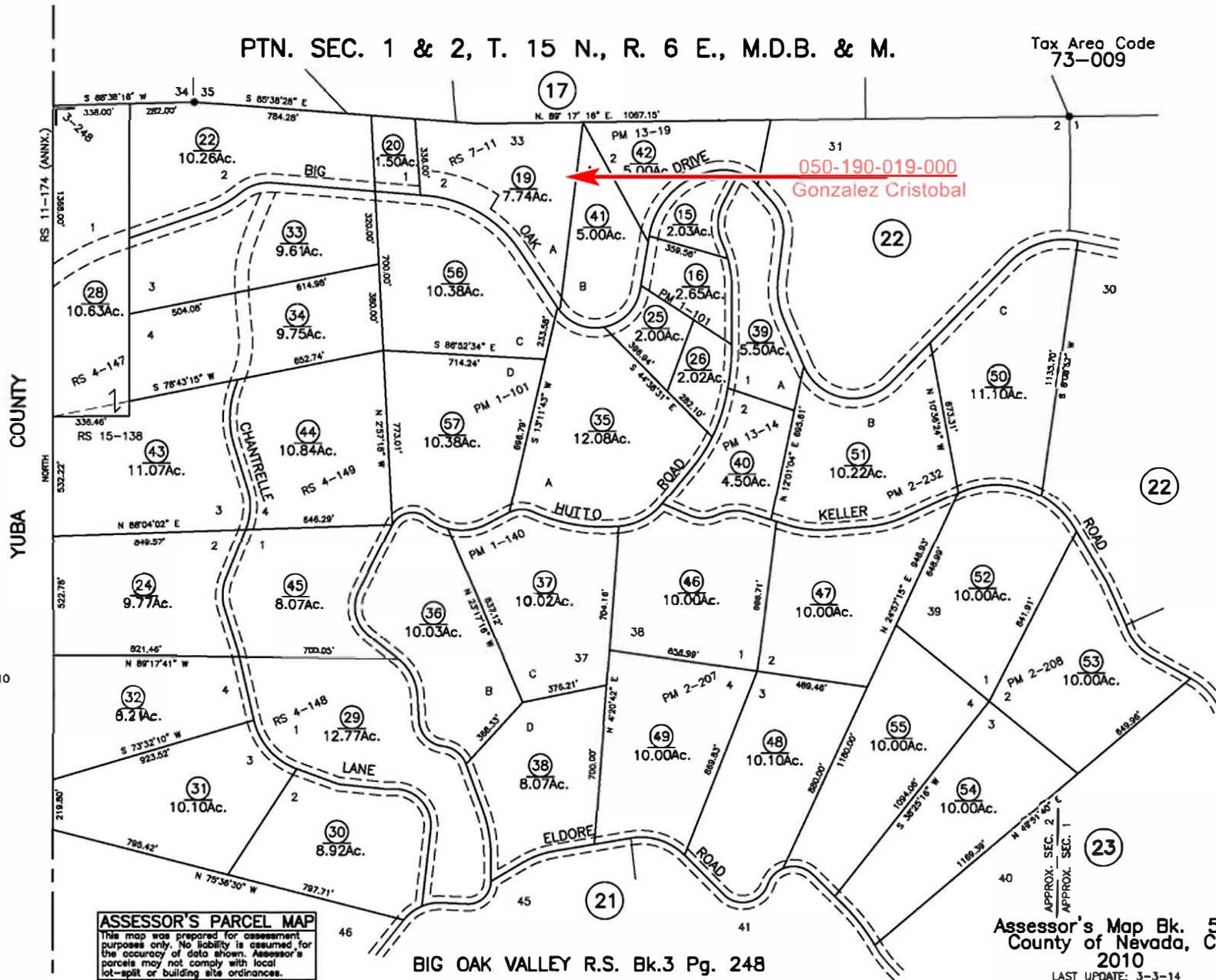
LAST UPDATE 9-16-09

NW 8/99

PTN. SEC. 1 & 2, T. 15 N., R. 6 E., M.D.B. & M.

Tax Area Code
73-009

50-19
(Fmly. Ptn. 2-38)



NOTE:
SEE 50-180-10
FOR MINERALS.

ASSESSOR'S PARCEL MAP
This map was prepared for assessment purposes only. No liability is assumed for the accuracy of data shown. Assessor's parcels may not comply with local lot-split or building site ordinances.

BIG OAK VALLEY R.S. Bk.3 Pg. 248

Assessor's Map Bk. 50-Pg. 19
County of Nevada, Calif.
2010

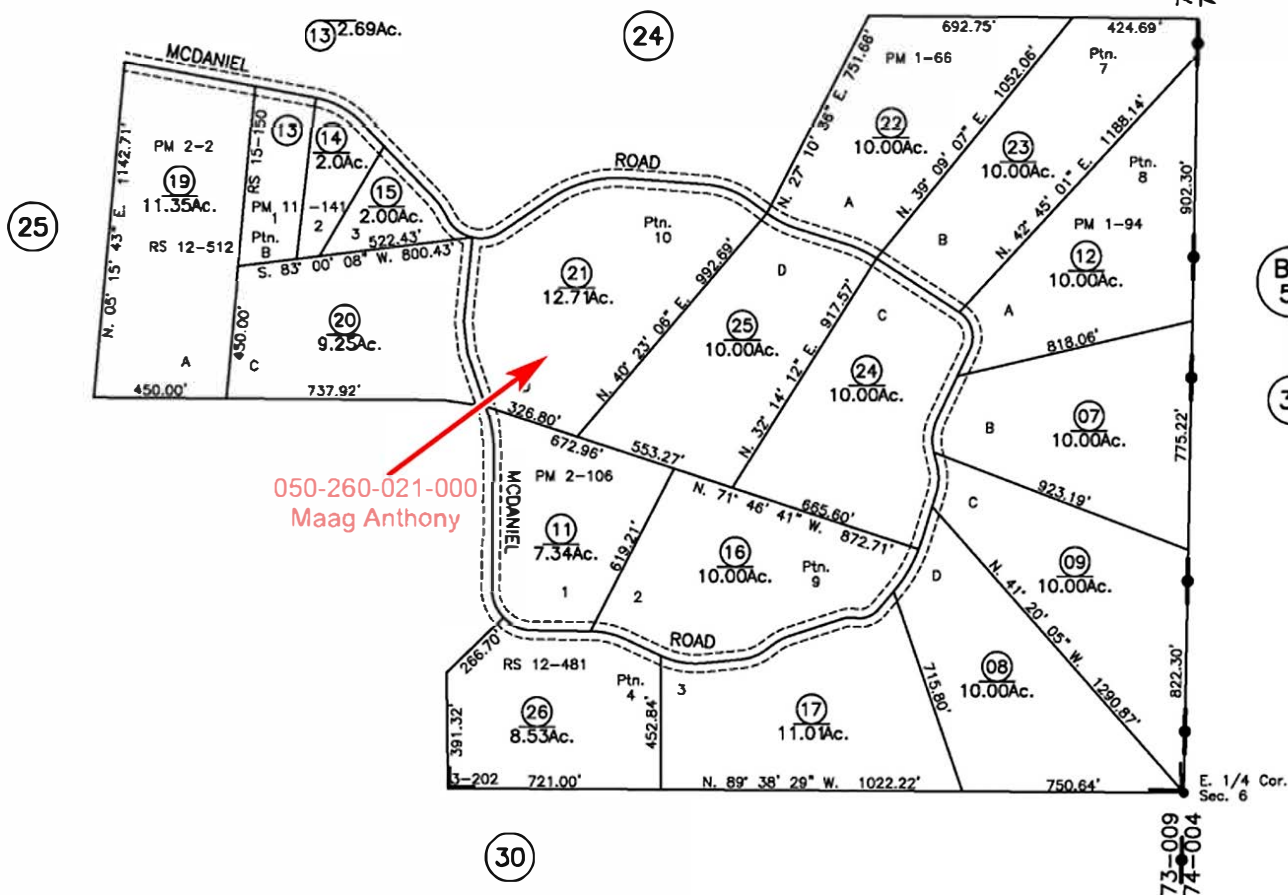
LAST UPDATE: 3-3-14

AAG 5/10

PTN. N. 1/2 SEC. 6, T. 15 N., R. 7 E., M.D.B. & M.

Tax Area Code
73-009

50-26
(Fmly. Ptn. 2-08)
(Fmly. Ptn. 2-34)



Bk. 51
31



ASSESSOR'S PARCEL MAP
 This map was prepared for assessment purposes only. No liability is assumed for the accuracy of data shown. Assessor's parcels may not comply with local lot-split or building site ordinances.

BIG OAK VALLEY R.S. Bk. 3, Pg. 202

1-1-04
1-1-05
Assessor's Map Bk. 50 -Pg. 26
County of Nevada, Calif.
2003

LAST UPDATE: 7-24-14

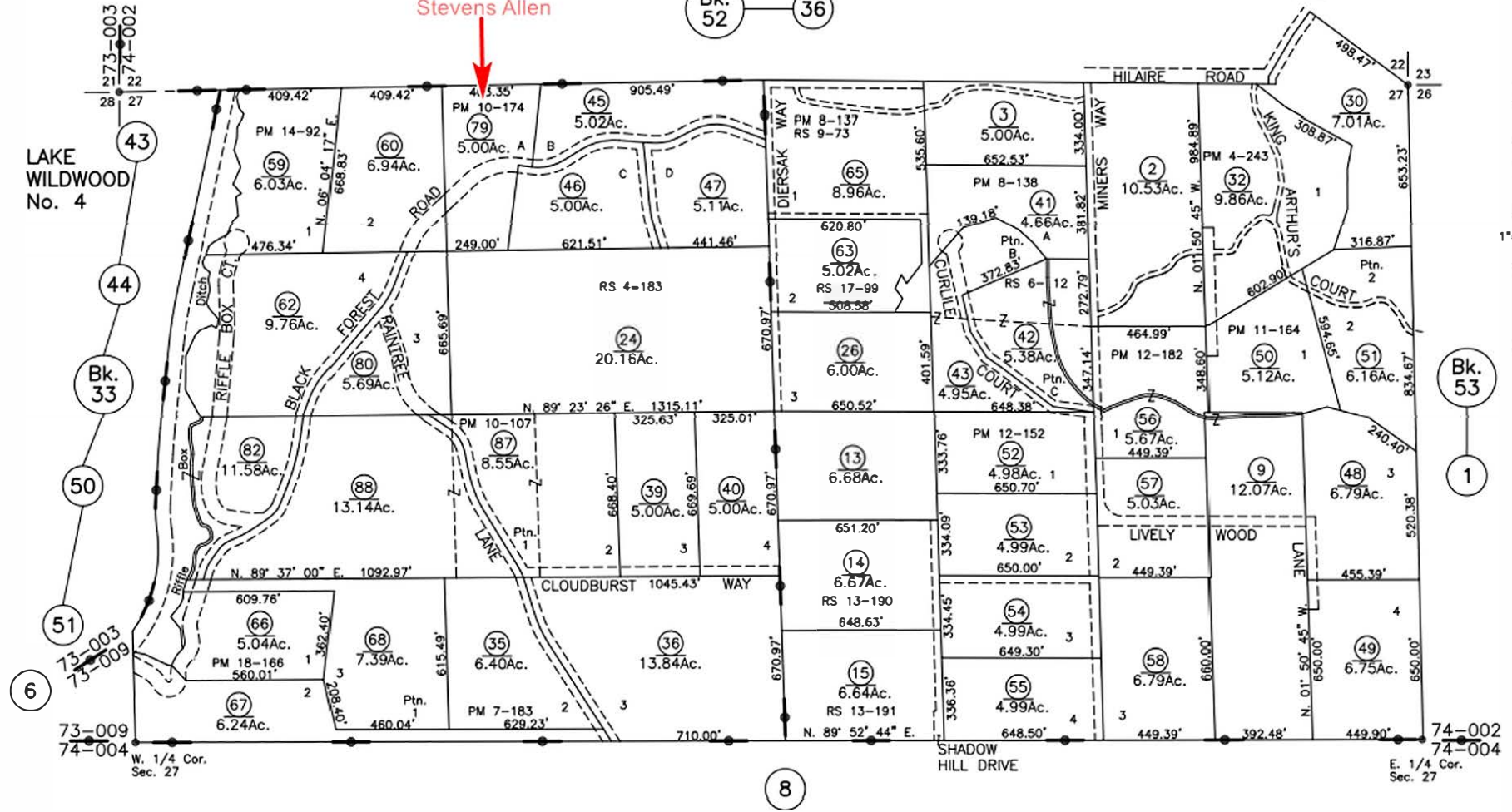
MW 12/03

PTN. SEC'S 22 & 27, T. 16 N., R. 7 E., M.D.B. & M.

Tax Area Code
73-009
74-002

51-07
(Fmly. Ptn. 1-45)
(Fmly. 1-70)

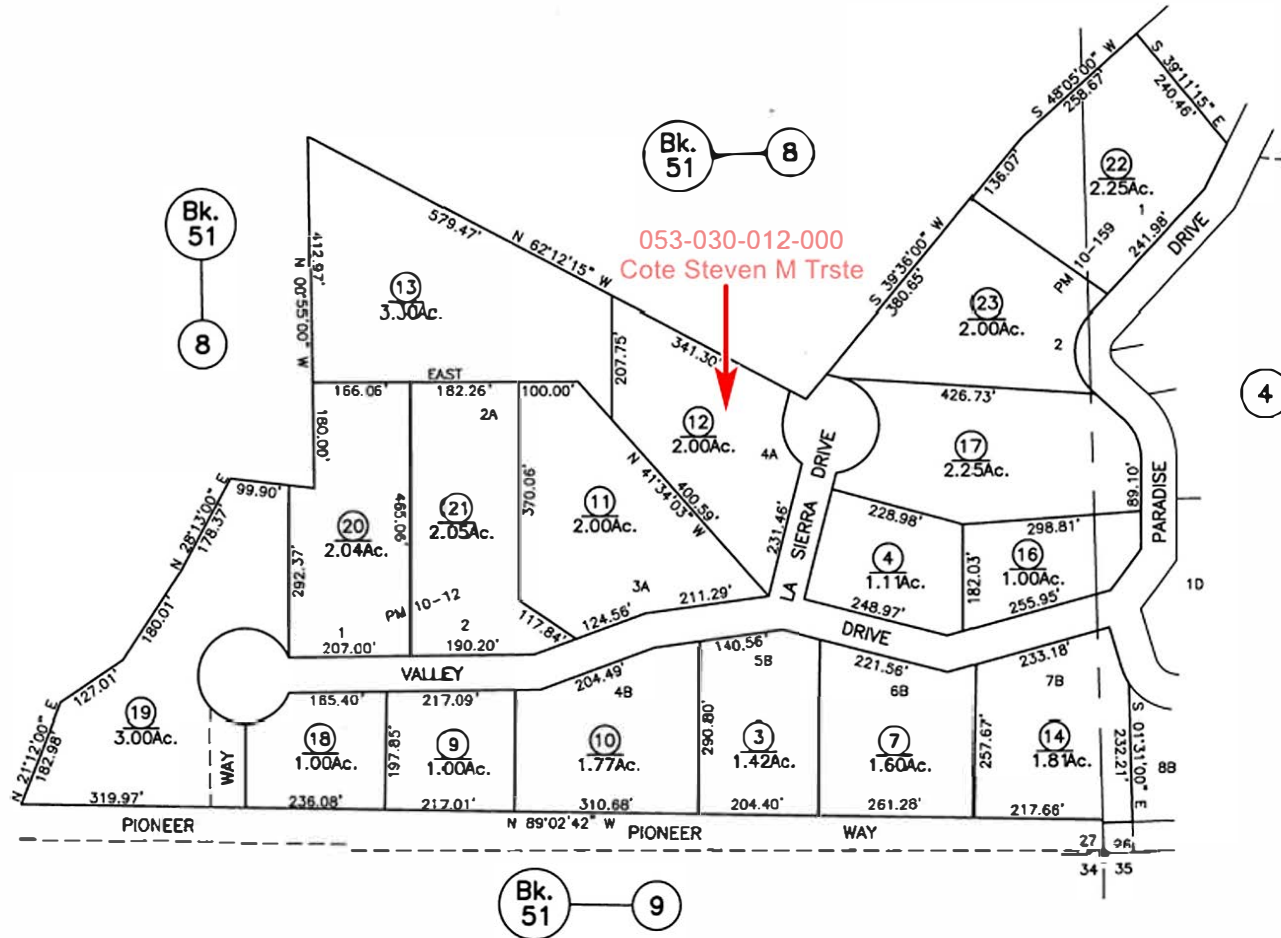
051-070-079-000
Stevens Allen



ASSESSOR'S PARCEL MAP NOTICE
This map was prepared for assessment purposes only. No liability is assumed for the accuracy of data shown. Assessor's parcels may not comply with local lot-split or building site ordinances. Assessor's block numbers shown in ellipses; parcel numbers are shown in circles. All distances on curved lines are chord measurements.

- 1-1-03
- 1-1-04
- 1-1-06
- 1-1-09

Assessor's Map Bk.51-Pg. 07
County of Nevada, Calif.
2002

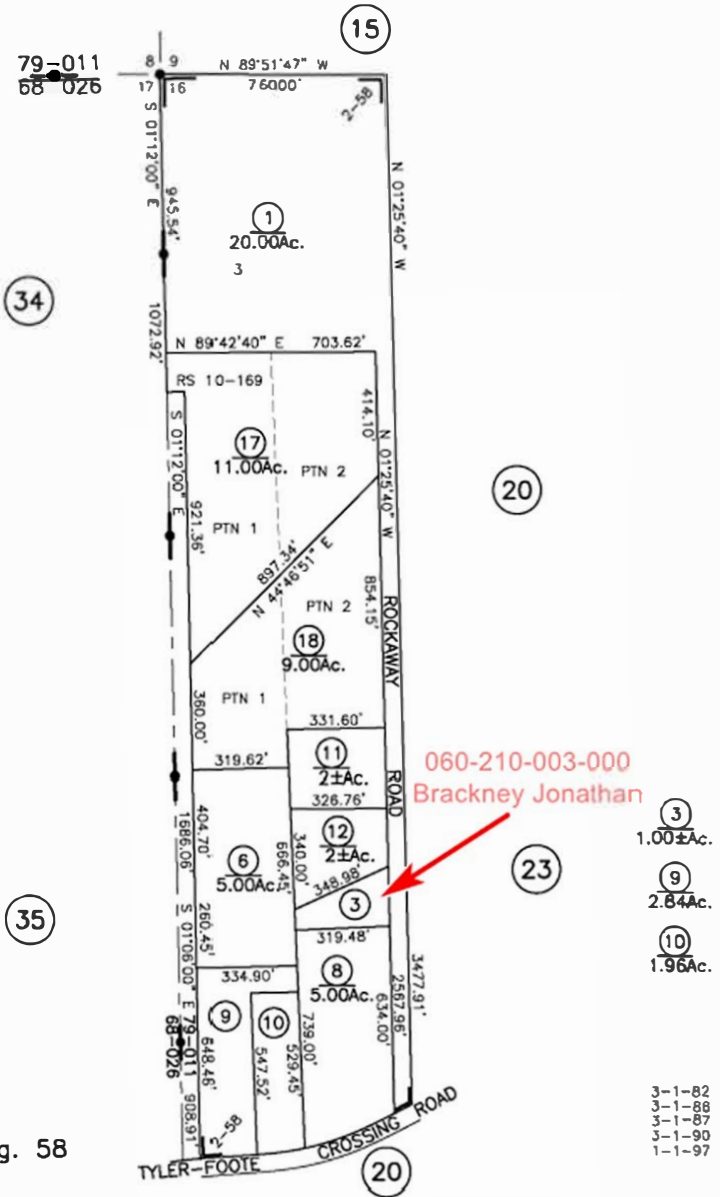


ASSESSOR'S PARCEL MAP
 This map was prepared for assessment purposes only. No liability is assumed for the accuracy of data shown. Assessor's parcels may not comply with local lot-split or building site ordinances.

PTN W 1/2 SEC 16, T. 17 N., R. 8 E., M.D.B. & M.

Tax Area Code
79-011

60-21
(Fmly 32-33)
(Fmly 3-57)



- 3 1.00±Ac.
- 9 2.84Ac.
- 10 1.96Ac.

- 3-1-82
- 3-1-88
- 3-1-87
- 3-1-90
- 1-1-97

ASSESSOR'S PARCEL MAP
This map was prepared for assessment purposes only. No liability is assumed for the accuracy of data shown. Assessor's parcels may not comply with local lot-split or building site ordinances.

BERT BURDA SUB. Bk. 2 Pg. 58

Assessor's Map Bk. 60 -Pg. 21
County of Nevada, Calif.
1965

LAST UPDATE: 1-1-01

AAG 6/12

PTN W 1/2 SEC 16, T. 17 N., R. 8 E., M.D.B. & M.

Tax Area Code
79-011

60-21
(Fmly 32-33)
(Fmly 3-57)



- 3 1.00±Ac.
- 9 2.84Ac.
- 10 1.96Ac.

- 3-1-82
- 3-1-86
- 3-1-87
- 3-1-90
- 1-1-97

Assessor's Map Bk. 60 -Pg. 21
County of Nevada, Calif.
1965

LAST UPDATE: 1-1-01

AAG 6/12

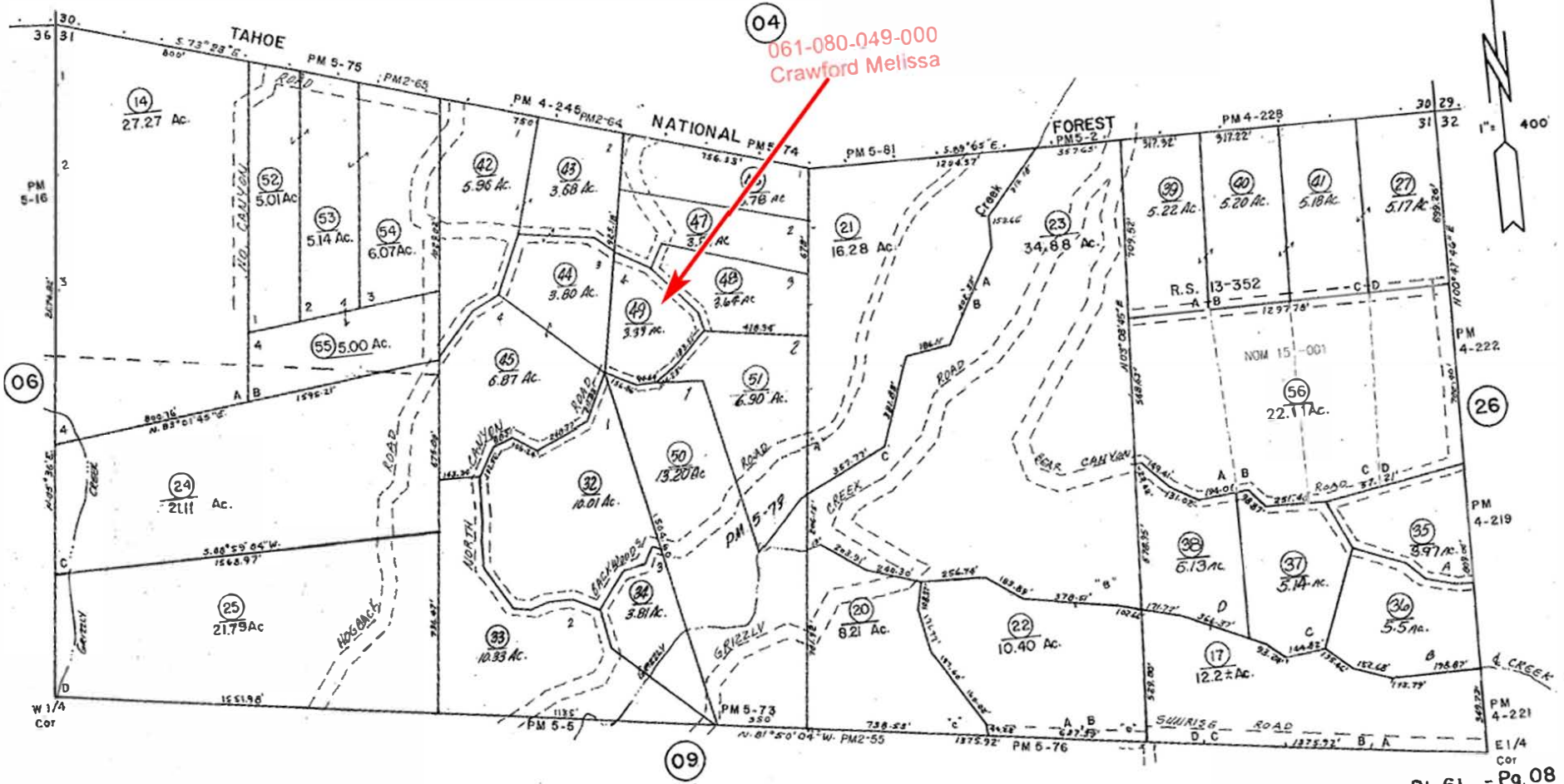
ASSESSOR'S PARCEL MAP
This map was prepared for assessment purposes only. No liability is assumed for the accuracy of data shown. Assessor's parcels may not comply with local lot-split or building site ordinances.

BERT BURDA SUB. Bk. 2 Pg. 58

N. 1/2 SEC. 31 T. 18 N., R. 9 E., M.D.B. & M.

Tax Area Code
79-011

61-08
(Fmly 3-22)



ASSESSOR'S PARCEL MAP
 This map was prepared for assessment purposes only. No liability is assumed for the accuracy of data shown. Assessor's parcels may not comply with local lot-split or building site ordinances.

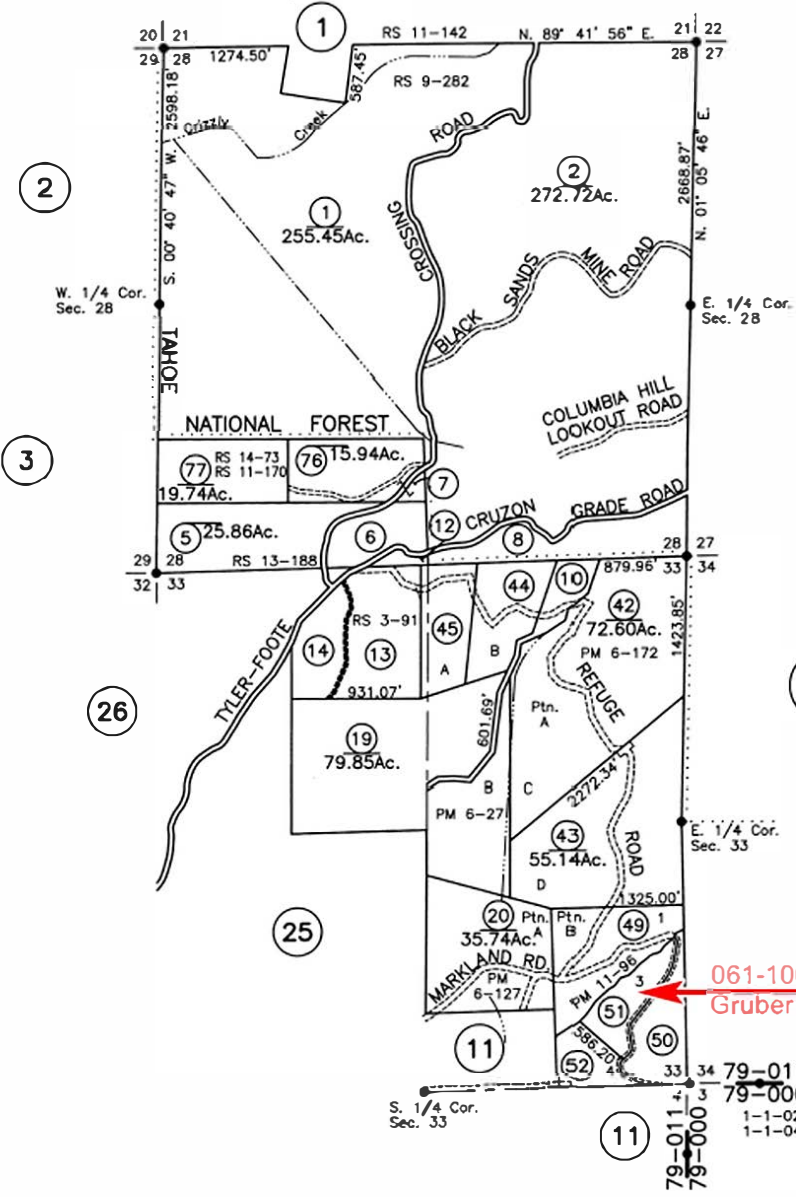
Assessor's Map Bk. 61 - Pg. 08
 County of Nevada, Calif.
 1971 3-1-72 3-1-77 3-1-87 3-1-02
 4.1.72 3-1-78 1-1-02

PTN. SEC'S 28 & 33, T. 18 N., R. 9 E., M.D.B. & M.

Tax Area Code
79-011

61-10
(Fmly. Ptn. 3-29)

- ⑥ 13.47Ac.
- ⑦ 4.42Ac.
- ⑧ 20.06Ac.
- ⑩ 8.44Ac.
- ⑫ 1.38Ac.
- ⑬ 23.49Ac.
- ⑭ 11.39Ac.
- ④④ 16.87Ac.
- ④⑤ 15.08Ac.
- ④⑨ 23.38Ac.
- ⑤⑩ 13.55Ac.
- ⑤⑪ 10.07Ac.
- ⑤⑫ 8.00Ac.



ASSESSOR'S PARCEL MAP
This map was prepared for assessment purposes only. No liability is assumed for the accuracy of data shown. Assessor's parcels may not comply with local lot-split or building site ordinances.

Assessor's Map Bk. 61-Pg. 10
County of Nevada, Calif.
2001

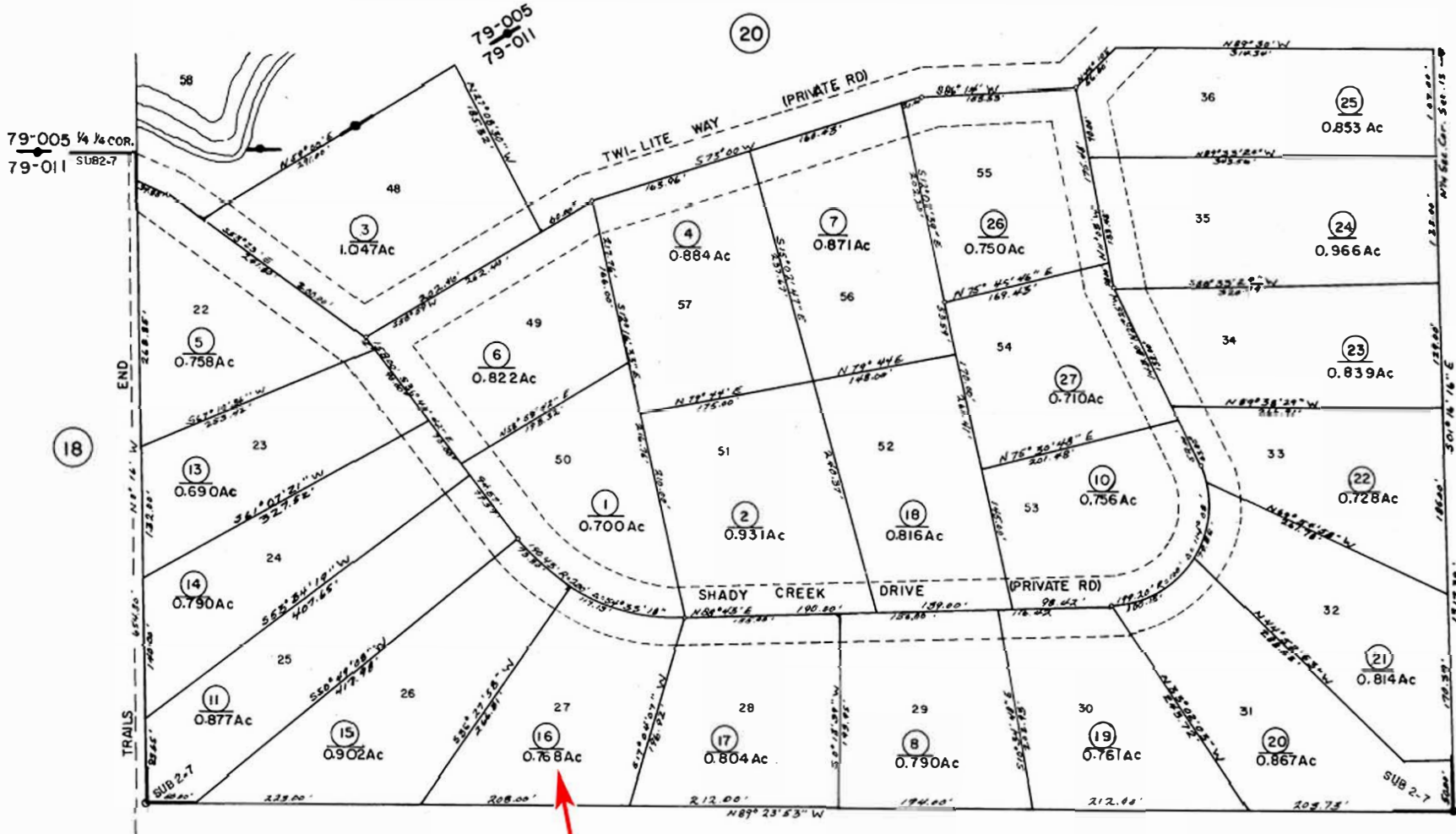
LAST UPDATE 12-30-08

NW 8/01

S 1/2 NE 1/4 NW 1/4 SEC. 15 T. 17 N., R. 8 E., M.D.B. & M.

Tax Area Code
79-011

62-21
Fmly 32-40



THE PONDEROSA SUB. Bk2 Pg 7

062-210-016-000
Thomas Edwin Est Of

ASSESSOR'S PARCEL MAP
 This map was prepared for assessment purposes only. No liability is assumed for the accuracy of data shown. Assessor's parcels may not comply with local lot-split or building site ordinances.

Assessor's Map Bk. 62 - Pg. 21
County of Nevada, Calif.

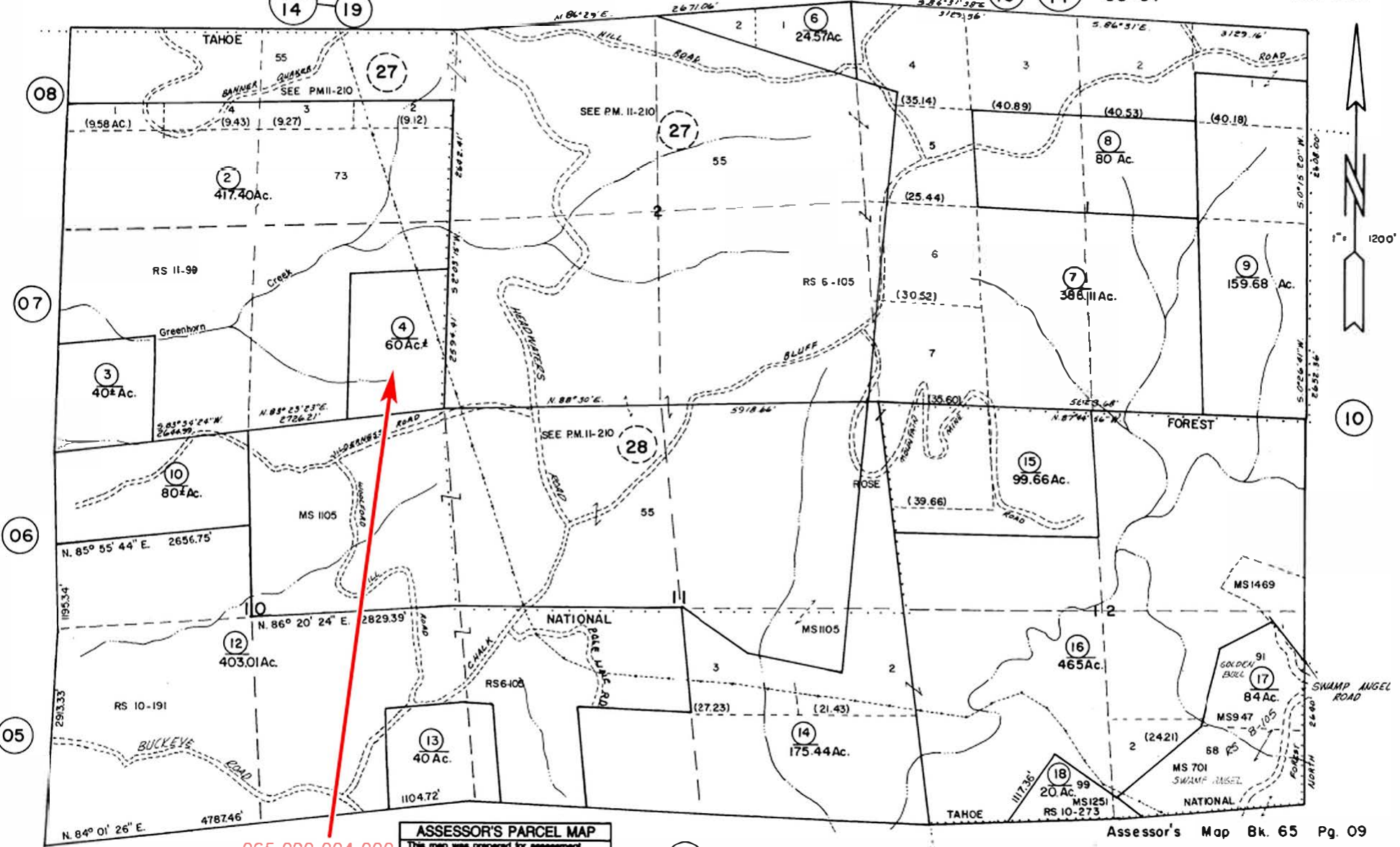
1962 3-1-87
3-1-82
3-1-84
3-1-85

9-81 9/8

SEC'S. 1, 2, 3, 10, 11, & 12, T.16N., R.10E., M.D.B. & M.

Bk. 14 Tax Area Code 68-07

65-09 (FMLY. 14-21)



ASSESSOR'S PARCEL MAP
 This map was prepared for assessment purposes only. No liability is assumed for the accuracy of data shown. Assessor's parcels may not comply with local lot-split or building use ordinances.

065-090-004-000
 FNG Assets LLC

Assessor's Map Bk. 65 Pg. 09

County of Nevada, Calif.

1962 3-1-81 3-1-82
 3-1-86 3-1-94
 3-1-90 3-1-91

5-00 fl