

Redistricting Public Hearing

11/09/2021





Process Review

Today's Goal:

- **Public and Board input on current map scenarios**

Next Steps:

- **Updated Map scenarios (2) posted by Nov. 11th**
- **Public Hearing on November 16th**
- **Final map creation, posted by December 9th**
- **Board map adoption December 14th**



Top District Map Guidelines

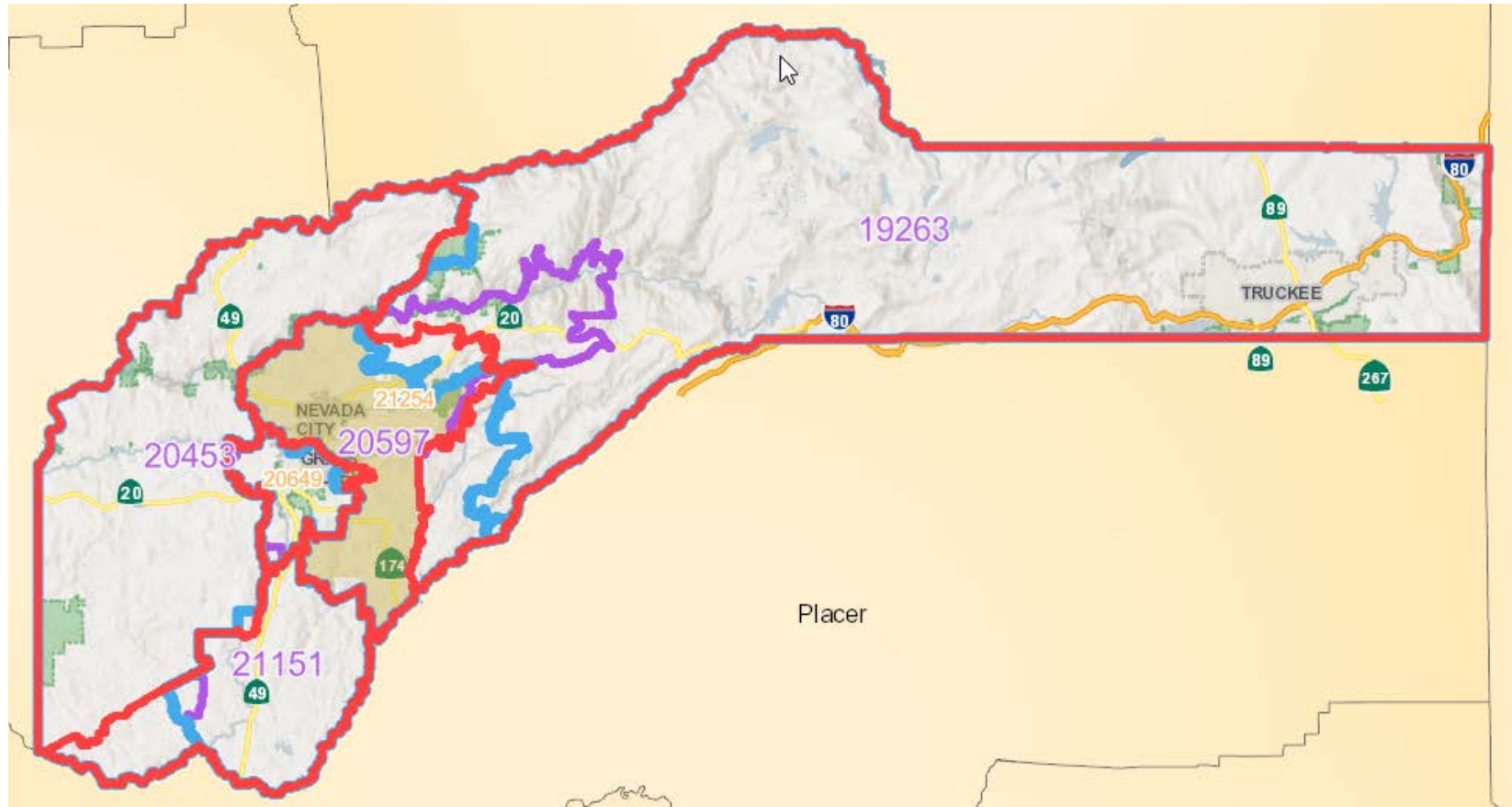
1. No more than 10% total deviation from lowest to highest population district.

- e.g. low district of -4% and high District of 3% would total to 7%
- Ideally no more than 2% deviation for a district
- 1% deviation = 205 residents in Nevada County

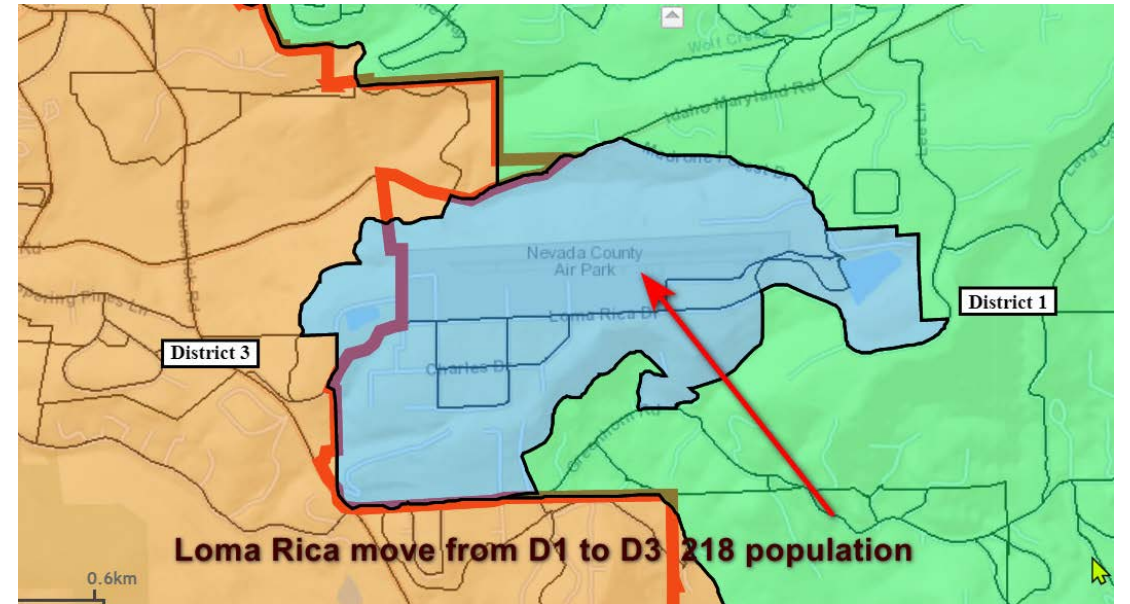
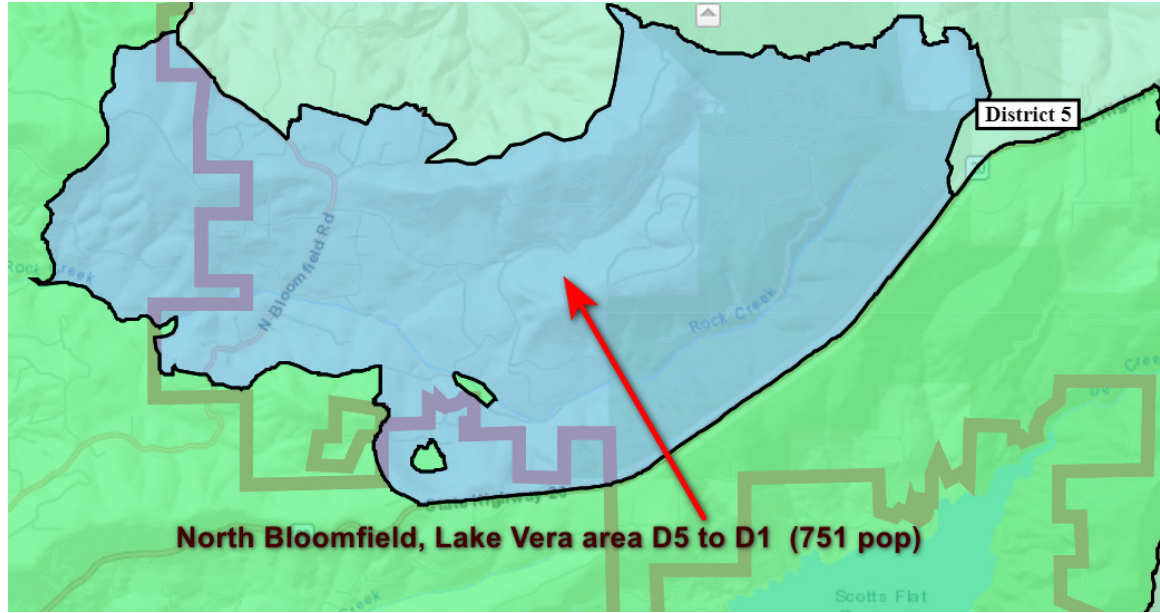
2. Keep Communities of Interests whole



Draft Map Scenario Objectives



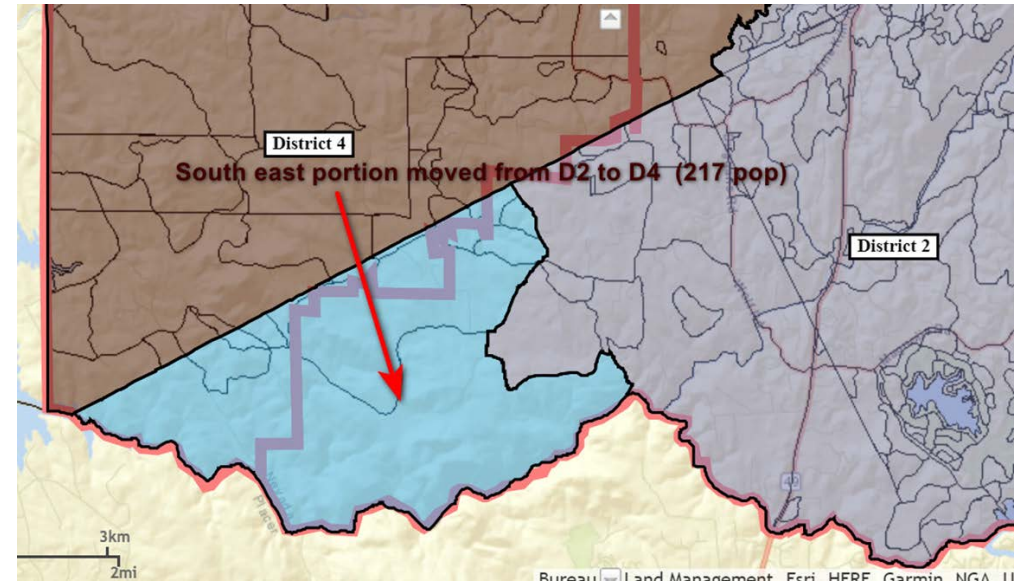
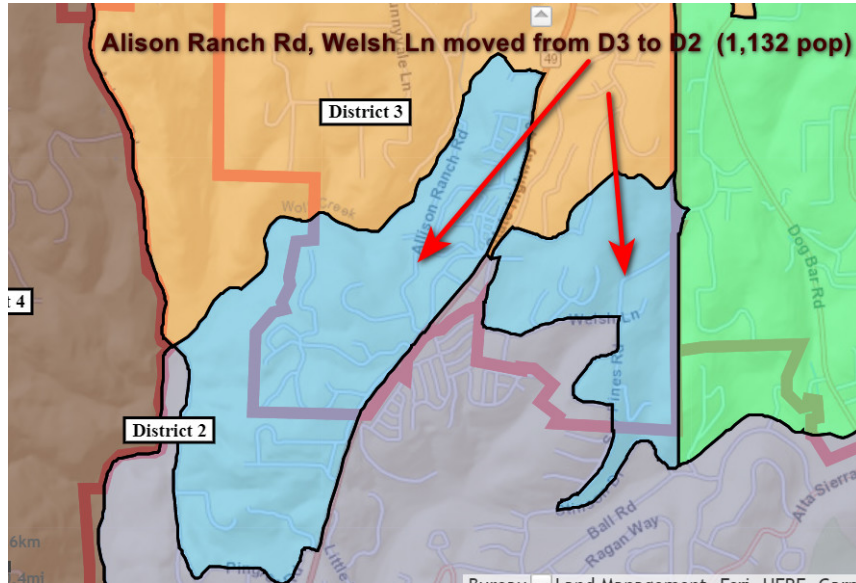
North Bloomfield, Lake Vera – 751 population



Loma Rica – 218 population



Alison Ranch Rd, Welsh Ln 1,132 population



Southeast District 2 – 217 population



Map Options Public Hearing

- **Option 1**
- **Option 2**
- **Option 3**
- **Option 4**



Airport / Loma Rica





Process Review

Today's Goal:

- **Public and Board input on current map scenarios**

Next Steps:

- **Updated Map scenarios (2) posted by Nov. 11th**
- **Public Hearing on November 16th**
- **Final map creation, posted by December 9th**
- **Board map adoption December 14th**

