

CAL FIRE

NEVADA-YUBA-PLACER UNIT NEVADA COUNTY BOARD OF SUPERVISORS TOUR

JUNE 11, 2019

BRIAN ESTES, UNIT CHIEF



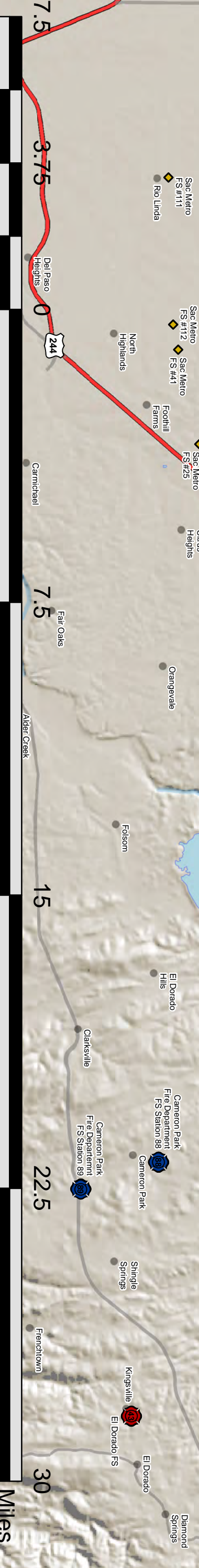
District 1	Heidi Hall
District 2	Ed Scofield
District 3	Dan Miller
District 4	Sue Hoek
District 5	Richard Anderson

2019 NEVADA COUNTY B.O.S. TOUR

“Tour Itinerary”

<u>Time</u>	<u>Location</u>	<u>Action</u>
1200	Tour Begins, Rood Center 950 Maidu Ave, Nevada City, CA 95959	Enroute Station 20
1215	Arrive Nevada City Station 20 10242 Ridge Road Nevada City, CA 95959 <ul style="list-style-type: none"> • Welcome • Lunch • Ahmadi Presentation (during lunch) • Rufenacht Presentation (during lunch) 	
1315	Tour Nevada City Station 20, Shop, Dozer Building, Admin Building <ul style="list-style-type: none"> • History of Station 20, equipment, capabilities and statistics, presentation/demonstration of tools (Layton and Crew) • Shop walk through (Estes Lead, Scobee Tech Spec) • Dozer walk through (Estes Lead, Entz Tech Spec) • Admin walk through (Estes Lead, Ahmadi/Mathias Tech Spec) 	
1430	Leave Station 20	Enroute Empire Mine
1445	Arrive Empire Mine State Park 10791 East Empire Street Grass Valley, CA 95945 <ul style="list-style-type: none"> • Fuels reduction presentation (Griffis) • Washington Ridge toolout (Kidwell) 	
1530	Leave Empire Mine	Enroute GVECC
1545	Arrive and Tour GVECC 13120 Loma Rica Drive Grass Valley, CA 95945 <ul style="list-style-type: none"> • ECC presentation (Radovich) 	
1615	Leave ECC	Enroute GVAAB
1616	Arrive and Tour GVAAB 13120 Loma Rica Drive Grass Valley, CA 95945 <ul style="list-style-type: none"> • GVAAB presentation (Sjolund) 	
1645	Leave GVAAB	Enroute Rood Center
1700	Arrive Rood Center 950 Maidu Ave Nevada City, CA 95959	
1700	Tour Concluded	

NEVADA-YUBA-PLACER UNIT



LEGEND

	CAL FIRE Schedule A Fire Stations		Cities
	CAL FIRE Schedule B Fire Stations		Command Center
	PCPD Volunteer Fire Stations		Air Attack Base
	USFS Facilities		Camps
	Local Government Fire Stations		Owenship
	Unit Boundary		FRA
	DPA Line		LRA
	Battalion Boundaries		SRA
	Lakes		



CAL FIRE **NEVADA-YUBA-PLACER UNIT** **STATION 20 NEVADA CITY**



This facility was originally built in 1936 as a tent facility to protect the watersheds of Nevada County and was established as the headquarters for the then CDF Nevada Ranger Unit. In 1957, the facility was updated and became the headquarters for the newly formed Nevada-Yuba Ranger Unit. In the 1970's, the Nevada-Yuba-Placer Unit was formed and the station became the battalion headquarters for Nevada County. The station was rebuilt in 2012 to meet the needs of a more modern fire service. Nevada City Station 20 is staffed year-round with two Type III engines, one Type II Dozer, one Battalion Chief, one Division Chief, one Forester II, and two Forester I's. The station covers the Grass Valley and Nevada City area with a closest resource agreement for mutual and automatic aid with several local fire districts.

Nevada City has a modern automotive shop and pump testing facility for vehicle and apparatus maintenance. The shop is staffed with two Heavy Equipment Mechanics and the Fleet Equipment Manager.

The Nevada City Station has a long and proud history in Nevada County and is a critical component in the department's mission of aggressive initial attack.

Nevada City Station 20 Five Year Call Volume and Statistics

	VEG FIRES	STR FIRES	VEH FIRES	OTH FIRES	MEDICALS	VEH ACC	RESCUES	HAZ-MAT	HAZ-CON	PUB AST	OTHER	Total
2018	391	85	19	245	69	105	8	2	19	14	61	1018
2017	474	100	36	285	65	80	13	0	25	5	70	1153
2016	449	116	42	265	64	83	14	1	20	5	98	1157
2015	401	93	28	301	71	74	3	4	20	4	49	1048
2014	279	77	13	153	58	24	3	0	4	4	21	636
Total	1994	471	138	1249	327	366	41	7	88	32	299	5012
Number of Resource Responses												
STN	2014	2015	2016	2017	2018	Total						
20	636	1048	1157	1153	1018	5012						
Number of Incidents Resources Responded to												
STN	2014	2015	2016	2017	2018	Total						
20	424	689	693	660	644	3110						

CAL FIRE **NEVADA-YUBA-PLACER UNIT** **HIGGINS** **STATION 21**



Higgins Station 21 is one of the most historic fire stations in Nevada County. First built in 1949, it was designed to protect the State Responsibility Area and communities along highway 49. Communities served by Higgins Station 21 include Lake of The Pines and Alta Sierra.

CAL FIRE has a special relationship with the Higgins Fire Protection District and has had a cooperative fire protection agreement since 1976. Higgins fire station was the first established Amador Plan Agreement in the State of California. This agreement supports both the state and local government missions providing a beneficial value and cost saving to both entities. This relationship is now used in dozens of communities throughout the State Responsibility Area.

Station 21 staffs two Type III engines in the summer season and one Type I in the winter season, during the Amador plan, with highly trained professional CAL FIRE Firefighters. Higgins Fire Protection District Paid Call Firefighters staff the Type I and/or Type III engines, water tender, rescue or squad when needed.

Higgins Corner Station 21 Five Year Call Volume and Statistics

Year	VEG FIRES	STR FIRES	VEH FIRES	OTH FIRES	MEDI CALS	VEH ACC	RES CUES	HAZ-MAT	HAZ-CON	PUB AST	OTH	Total
2018	191	44	14	188	616	106	1	0	34	72	26	1292
2017	218	45	21	194	604	109	1	1	45	84	19	1341
2016	185	40	24	150	552	108	4	1	31	85	22	1202
2015	205	32	24	206	545	106	3	1	43	76	21	1262
2014	288	72	23	277	510	150	4	3	60	84	20	1491
Total	1087	233	106	1015	2827	579	13	6	213	401	108	6588
Number of Resource Responses												
STN	2014	2015	2016	2017	2018	Total						
21	1491	1262	1202	1341	1292	6588						
Number of Incidents Resources Responded to												
STN	2014	2015	2016	2017	2018	Total						
21	1142	1022	1005	1132	1062	5363						

CAL FIRE **NEVADA-YUBA-PLACER UNIT** **COLUMBIA HILL** **STATION 42**



The CAL FIRE Columbia Hill Station 42 was originally staffed in the 1940's where the Firefighters were housed in a series of tents during the summer months. The current station was built in the early 1950's as a one engine station. In the 1970's, the CDF Station at Shady Creek was closed and the engine assigned there moved to Columbia Hill.

Serving the communities of Graniteville, North San Juan, French Corral, North Columbia and North Bloomfield (Malakoff Diggings), Columbia Hill protects the State Responsibility Area and assists the North San Juan Fire District on all calls through auto and mutual aid agreements, when staffed. The location was strategically selected to allow for a rapid response into many portions of the nearby Tahoe National Forest.

Columbia Hill Station staffs two Type III fire engines.

Columbia Hill Station 42 Five Year Call Volume and Statistics

Year	VEG FIRES	STR FIRES	VEH FIRES	OTH FIRES	MEDI CALS	VEH ACC	RES CUES	HAZ-MAT	HAZ-CON	PUB AST	OTHER	Total
2018	102	1	1	31	123	17	5	1	2	5	13	301
2017	88	0	6	17	109	23	1	0	5	3	17	269
2016	65	4	6	27	101	26	2	0	4	4	10	249
2015	59	5	5	50	125	38	5	0	5	13	14	319
2014	64	7	1	32	115	32	3	1	2	9	6	272
Total	378	17	19	157	573	136	16	2	18	34	60	1,410
Number of Resource Responses												
STN	2014	2015	2016	2017	2018	Total						
42	272	319	249	269	301	1,410						
Number of Incidents Resources Responded to												
STN	2014	2015	2016	2017	2018	Total						
42	210	236	177	184	214	1,021						

CAL FIRE **NEVADA-YUBA-PLACER UNIT** **MARTIS VALLEY** **STATION 50**



The CAL FIRE station in Truckee is located near the Truckee Tahoe Airport. CAL FIRE identified an urgent need to have a presence in the Truckee Basin for years but was unable to staff a facility until 1992. CAL FIRE initially staffed one engine at the Truckee Fire District Station 52 on Donner Pass Road and another utilizing the maintenance garage at Northstar Fire District Station 51. On July 1, 2000, the current Martis Valley Station 50 was opened and staffed with two Type III fire engines, collocated with Truckee Fire District.

Martis Valley Station 50, is the headquarters for the CAL FIRE Nevada-Yuba-Placer Battalion 15 Truckee/Tahoe Battalion. In addition to the two Type III fire engines the station houses a Battalion Chief, a forester, and a reserve engine. This station is frequently used to augment staffing on high fire danger days as a staging area for fire crews and dozers.

Equipment from this station responds with several fire districts and the USFS to protect people and property throughout Nevada, Placer, and Sierra Counties. CAL FIRE also provides wildland fire protection to the Town of Truckee through a CAL FIRE Wildland Contract at substantial savings to the town. A Defensible Space Inspector and a staffed lookout at Martis Peak have been a part of this contract.

Martis Valley Station 50 Five Year Call Volume and Statistics

Year	VEG FIRES	STR FIRES	VEH FIRES	OTH FIRES	MEDICALS	VEH ACC	RESCUES	HAZ-MAT	HAZ-CON	PUB AST	OTHER	Total
2018	122	39	38	244	183	190	55	0	36	16	49	972
2017	186	33	41	231	162	164	30	6	35	15	35	938
2016	146	35	27	196	171	179	20	3	23	21	37	858
2015	147	48	49	270	164	217	16	13	15	31	66	1,036
2014	143	42	50	235	190	155	16	3	16	18	35	903
Total	744	197	205	1,176	870	905	137	25	125	101	222	4,707
Number of Resource Responses												
STN	2014	2015	2016	2017	2018	Total						
50	903	1,036	858	938	972	4,707						
Number of Incidents Resources Responded to												
STN	2014	2015	2016	2017	2018	Total						
50	614	720	577	601	692	3,204						

CAL FIRE **NEVADA-YUBA-PLACER UNIT** **EMERGENCY COMMAND** **CENTER**



The Grass Valley Emergency Command Center (ECC) was established in 1989 in cooperation with the United States Forest Service, Tahoe National Forest. The CAL FIRE ECC is staffed by one Battalion Chief, five Fire Captains, 14 Communications Operators and one Office Technician.

The CAL FIRE ECC staff provides all risk, command and control services (dispatching) to fire and EMS agencies in El Dorado, Nevada, Placer, Plumas and Yuba Counties. In total, the ECC dispatches for 27 local government fire agencies, and one private ambulance service. In addition to the dispatching of fire and EMS resources, the ECC coordinates air ambulance services in five counties, serves as the Regional Coordination Center for Cal OES Region 4, and the Operational Area Coordination Center for Cal OES Nevada County, and the Lake Tahoe Basin Operational Areas.

In 2018, the ECC answered an average of 80-100 phone calls per day for a grand total of 111,210 calls. 47,714 of those were emergency calls including 21,997 911 calls.

Grass Valley Emergency Command Center Three Year Call Volume

Year	9-1-1	10 Digit Emergency	Total Emergency	Administrative	Total Calls
2017	23,985	27,934	51,829	69,084	120,913
2016	20,534	28,959	49,493	63,143	112,636
2015	18,411	25,198	43,609	58,607	102,216
Total	62,930	82,091	144,931	190,834	335,765

CAL FIRE NEVADA-YUBA-PLACER UNIT GRASS VALLEY AIR ATTACK BASE



Grass Valley Air Attack Base (GVAAB) originated in 1958. Located in Grass Valley at the Nevada County Airport, GVAAB is one of thirteen CAL FIRE Air Attack Bases in the state. The Base sits on three acres, and is co-located with the CAL FIRE and USFS Grass Valley Emergency Command Center, and the Tahoe National Forest Service Center.

The Nevada County Airport is a general aviation airport situated at the 3,150-foot elevation. The airport can support CAL FIRE airtankers, large helicopter operations and air attack platforms.

Resources stationed at GVAAB includes: One CAL FIRE Air Tactical Aircraft (AA 230), two CAL FIRE Airtankers (T88, T89) and one USFS Air Tactical Aircraft (AA17)

CAL FIRE's fire protection goal is to contain 95% of all unwanted fires to 10 acres or less. Aviation assets are instrumental in meeting and maintaining this goal. Air attack and helitack base locations, along with aircraft deployment, is designed to reduce the number of large fires through the capability of air resources to place fire retardant and personnel at the fire scene before ground forces arrive and to support fire control objectives.

Aircraft initial response criteria have been established to have a state aircraft over fires on state responsibility lands within 20 minutes of dispatch and to provide follow-up aircraft as needed. This response criteria plan was developed to include the use of USFS and BLM aircraft on a closest forces concept. Air assets located at GVAAB can respond to a fire anywhere in California and even into Nevada should an unwanted fire threaten California.

In 2018 GVAAB was operational between June 4th and December 10th. Aircraft assigned to the Base flew over 660 fire suppression missions in support of the 326 incident responses.

Grass Valley Air Attack Base Three Year Call Volume and Statistics

Year	Federal Responses	State Responses	Total	Total Gallons
2018	84	242	326	293,733
2017	35	217	252	446,696
2016	32	198	230	260,107
Average	50	219	269	333,512

CAL FIRE NEVADA-YUBA-PLACER UNIT WASHINGTON RIDGE CONSERVATION CAMP



Washington Ridge Conservation Camp is a cooperative effort between CAL FIRE and the California Department of Corrections and Rehabilitation(CDCR) to provide firefighting hand crews and a workforce for conservation projects.

Washington Ridge Camp has a staff of ten CAL FIRE Fire Captains, one Office Technician, one Water and Sewer Plant Operator, and nine CDCR Officers managed by a CAL FIRE Division Chief and a CDCR Lieutenant. A maximum of 106 inmates can be housed at the camp to staff five Type I hand crews and the support needed to maintain the facility. Five Emergency Crew Transport busses transport the hand crews and all the tools and supplies needed to fight fires and conduct work projects throughout the Nevada-Yuba-Placer Unit and the State of California.

All CAL FIRE hand crews are certified annually to assure performance and efficiency. Hand crews can typically clear hazardous vegetation at the rate of approximately 1-3 acres per day (depending on terrain and fuels) at a daily cost of \$227. Average costs for a private vendor to do the same work varies between \$4,000-\$10,000 per day. CDCR estimates that the use of conservation camp firefighters saves the state as much as \$100 million per year responding to fires and providing other community services. Historically, Washington Ridge Camp responds to more vegetation fires than any other camp in the state.

2018 Washington Ridge Project Hours and Response Statistics

	Jan	Feb	Mar	Apr	May	Jun	Jul	Aug	Sept	Oct	Nov	Dec	TOTAL
Project Hours Completed	80	63	70	67	33	55	29	23	35	65	45	56	621
Estimated savings to the community for project work													\$2,343,033 - \$6,069,033
Vegetation Fires													104
Other Fires													21
Public Assist/Rescue													10
Hazardous Material													2

CAL FIRE NEVADA-YUBA-PLACER UNIT EMPIRE MINE STATE HISTORIC PARK FUELS PROJECT

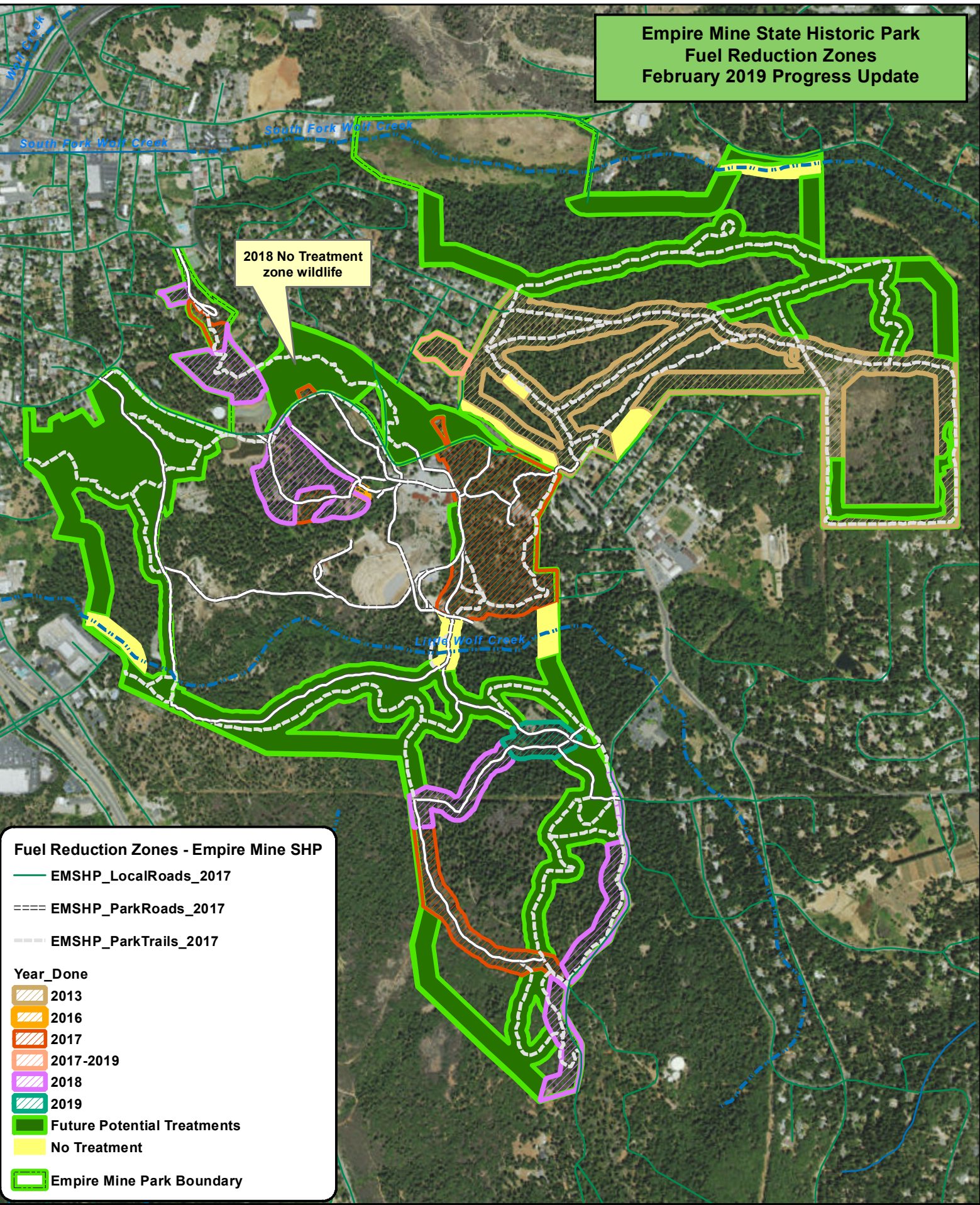


This project is a cooperative effort between California State Parks and CAL FIRE. State Parks is providing the oversight, management and objectives, while CAL FIRE is providing the labor force and equipment. Phase One involved clearing around the buildings within the park and has been completed. Phase Two involves improving the trail system in the park by reducing the nearby fuel loading. Phase Three includes the completion of a fuel break between the State Park and much of the private lands along the perimeter. Both Phase Two and Phase 3 are ongoing.

The current fuels reduction work is focused on opening the fire access road from Osborne Hill Road to the Penn Gate and behind the homes off Gold Hill Drive. CAL FIRE crews, working along State Park personnel, have opened about one half of the fire access road by cutting and chipping or piling and burning the ladder fuels within 150 feet of the road. CAL FIRE has utilized one of its skid-steer masticators to clear the fuels behind many of the homes along Gold Hill Drive. Both projects will greatly improve public safety and the park's ability to withstand a costly and damaging fire.



**Empire Mine State Historic Park
Fuel Reduction Zones
February 2019 Progress Update**



Fuel Reduction Zones - Empire Mine SHP

- EMSHP_LocalRoads_2017
- ==== EMSHP_ParkRoads_2017
- EMSHP_ParkTrails_2017

Year_Done

- 2013
- 2016
- 2017
- 2017-2019
- 2018
- 2019
- Future Potential Treatments
- No Treatment
- Empire Mine Park Boundary

Empire Mine State Historic Park - Fuels Reduction Project
 100 feet out from selected roads & trails - 200 feet out from selected Park borders

0 0.1 0.2 Miles

N