

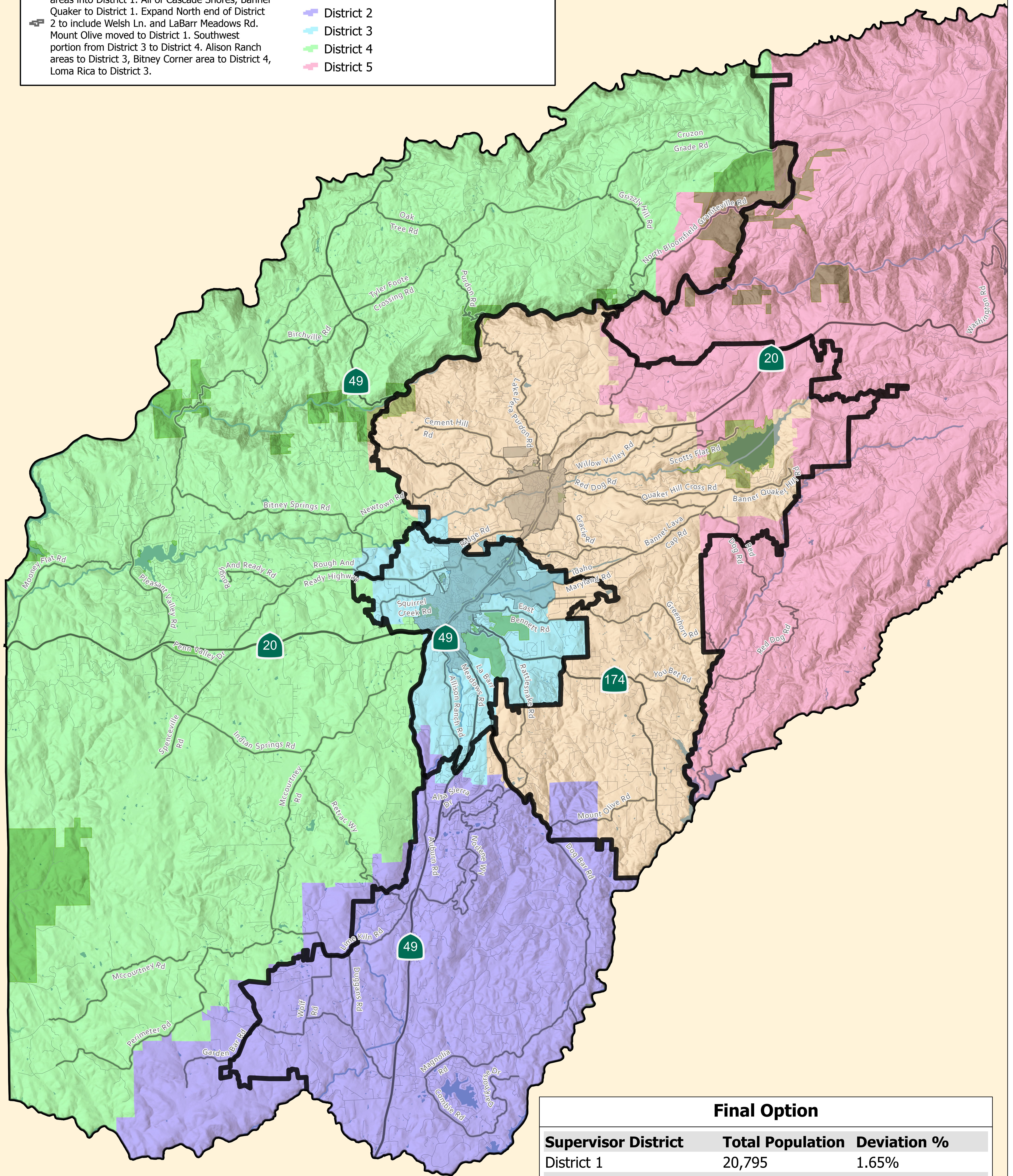
Nevada County, CA: 2021 Redistricting Draft Final Map

Final Option
 Modification of Options 1 and 4. Putting most of North Bloomfield and Rock Creek Rd, Highway 20 areas into District 1. All of Cascade Shores, Banner Quaker to District 1. Expand North end of District 2 to include Welsh Ln. and LaBarr Meadows Rd. Mount Olive moved to District 1. Southwest portion from District 3 to District 4. Alison Ranch areas to District 3, Bitney Corner area to District 4, Loma Rica to District 3.

Legend

Current Supervisor District Boundaries

- District 1
- District 2
- District 3
- District 4
- District 5



Final Option		
Supervisor District	Total Population	Deviation %
District 1	20,795	1.65%
District 2	20,801	1.68%
District 3	20,843	1.89%
District 4	20,927	2.3%
District 5	18,918	-7.52%
Total	102,284	9.82%

