

# Behavioral Health Continuum Infrastructure Program

An opportunity for  
improved treatment  
services in Nevada  
County



**NEVADA  
COUNTY**  
CALIFORNIA

**Behavioral  
Health**





# Quick BHCIP History

**Five rounds of funding so far**

**We received rounds 1, 2, 3**

- Mobile crisis start-up
- Commons Resource Center
- Planning Grant



# New Bond Funds going through BHCIP process: \$3.3 Billion

## Priorities:

- Residential treatment projects
- Site control
- Five-year business plan
- Assessed for phase of readiness – more ready the better
- Stakeholder support
- 10% match required



Our region competes for  
\$58 million



RFP released July and due  
in December



One more round next year

# Proposed project:

- Inpatient treatment facility
- 16 beds providing acute and sub-acute care
- Primarily serve Nevada County residents but partner with neighboring small counties
- Utilize County land



# Need for an inpatient facility:



- Currently send people out of county
- Better, more integrated care with local facility
- Connection with loved ones and local resources
- More control over placement (though not total control)
- Protect against future demand as LPS law changes

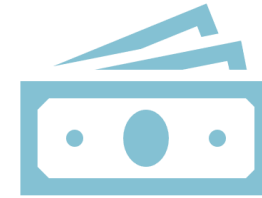
# Three key strands for project viability:



**Find a location**



**Operational  
plan**



**Fiscal impacts**



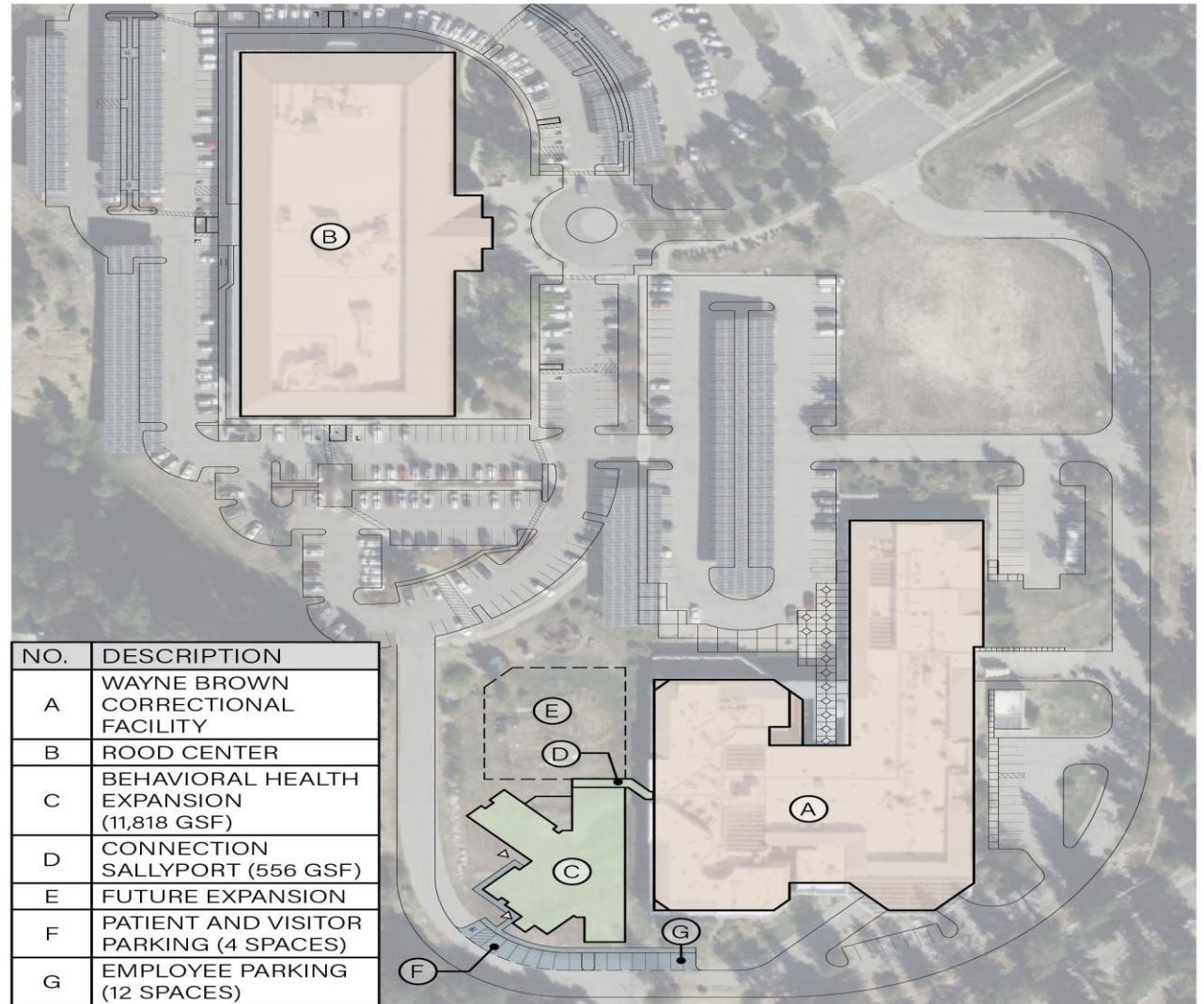
**NEVADA  
COUNTY**  
CALIFORNIA

**Behavioral  
Health**

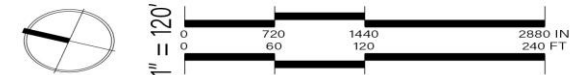


# Proposed location: Rood Campus

- Site control allows planning work to start now
- Use land value towards match
- Close to Odyssey House and other services



**OVERALL SITE PLAN**



*Behavioral Health Addition to the Wayne Brown Correctional Facility*

*24 June, 2024*

# Operations planning:

- **Analyzed current demand for inpatient care**
  - Pilot model combining acute level of care (Psychiatric Health Facility) and sub-acute level (Mental Health Rehabilitation Center)
- **Identified a partner to operate the facility**
  - Released an RFP and selected Crestwood as our operator
- **Developed partnership with other counties**
  - Sierra, Plumas, Glenn, Colusa and Mono all interested



# Understanding project costs

- **Estimated construction costs of \$16m-\$20m**
  - Need approximately 12,000 sf of space
  - Inpatient hospital facility is expensive to construct
- **Annual operating costs of approximately \$6m**
  - Some revenue generation through Medi-Cal billing and offsetting cost savings
  - Some internal staff capacity will also be needed

# Fiscal analysis:

Keeps money in the County and creates local jobs – economic development

- Currently spend over \$2.6 million in out of county contracts

Gives County more control of most expensive form of care

- Rate negotiations, lengths of stay and other variables impact costs

Appropriate investment in the behavioral health system

- Costs of operations offset by revenue generation in the broader system

# Key issues to remember:

- **This facility will not address all treatment needs**
  - Some individuals will not be appropriate for this facility and will still go out of county for treatment
- **A number of “off ramps” for the project still exist**
  - The project will not move forward if grant funds are not received, for example
- **The project involves some fiscal risk**
  - Landscape is evolving and revenue and expense projects are based on our best estimates right now



# Next steps in the project:

- **Primary focus on writing the proposal**
- **Develop Design/Build contract with Crestwood**
  - Tentatively returning to the Board 12/10
- **Conduct outreach and community engagement including local neighbors**
- **Work with Crestwood on schematic design**

# Today's Request:

## Permission to apply for BHCIP grant funding

**We believe this is the right opportunity to bring this needed level of care to our community!**

