

# Truckee Regional Library

PROJECT UPDATE

MAY 2024

ARIEL LOVETT

MANDY STEWART





# Current Partners



# The Need

The current Truckee library was built in 1975 when Truckee's population was 2,000 and has a maximum capacity of 54 people.

Today, the population of Truckee is over 16,000 and that same library serves over 200 people a day







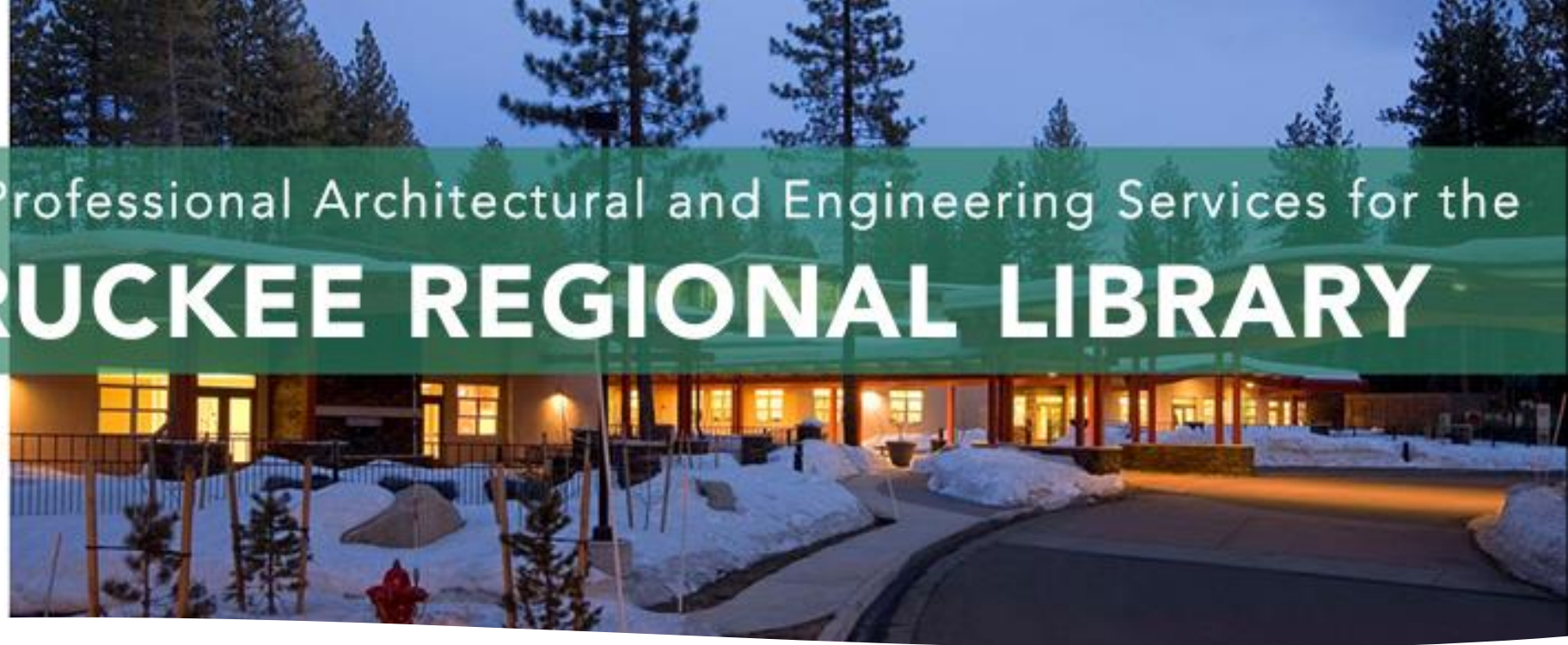
# Truckee Library JPA

In January 2024, the Nevada County Board of Supervisors and the Truckee Town Council executed a Joint Powers Authority Agreement for the new library.

The JPA is responsible for constructing and maintaining the new regional library and acquiring land tenure for the facility.

RFQ #178740: Professional Architectural and Engineering Services for the

# NEW TRUCKEE REGIONAL LIBRARY

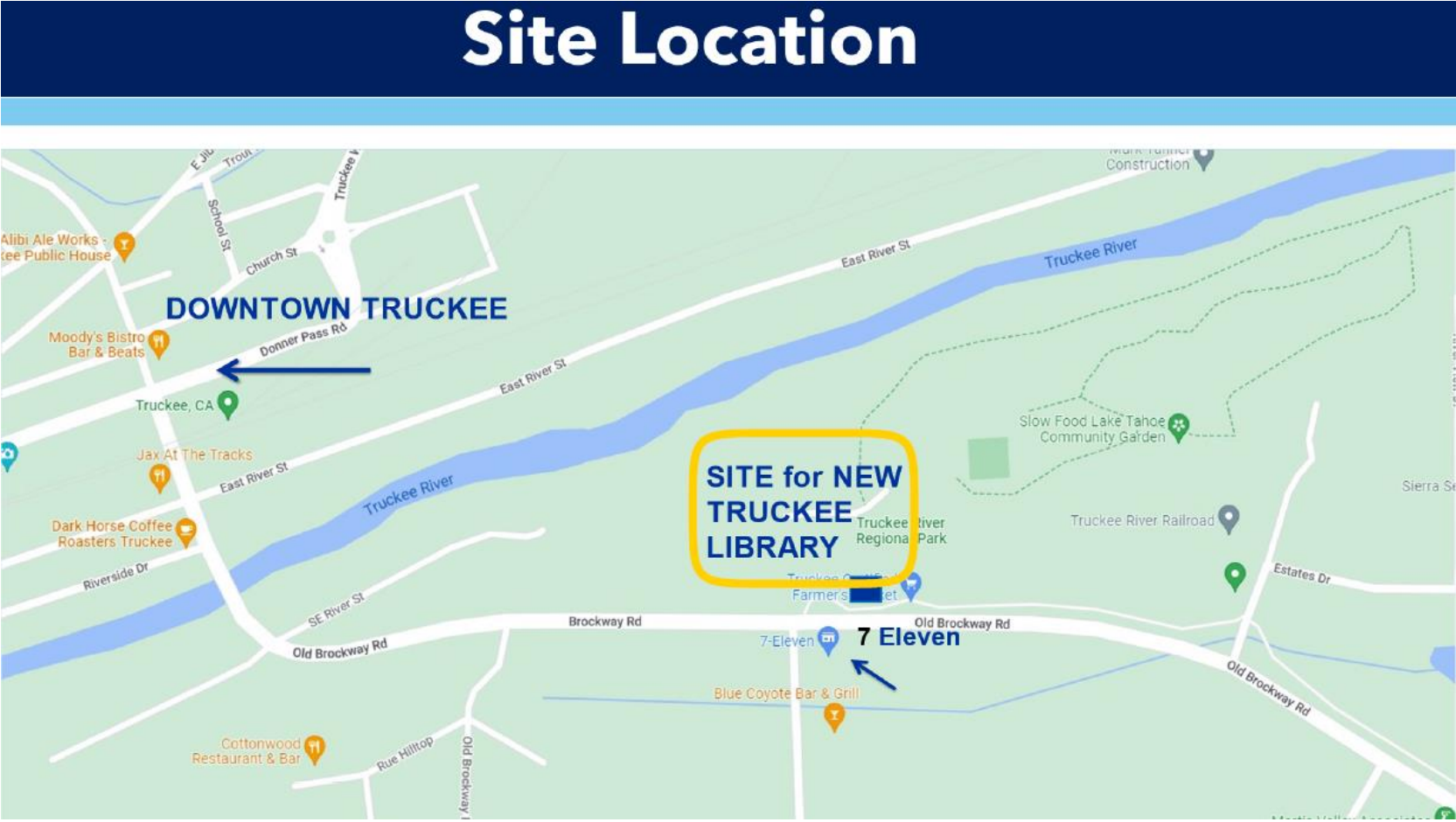


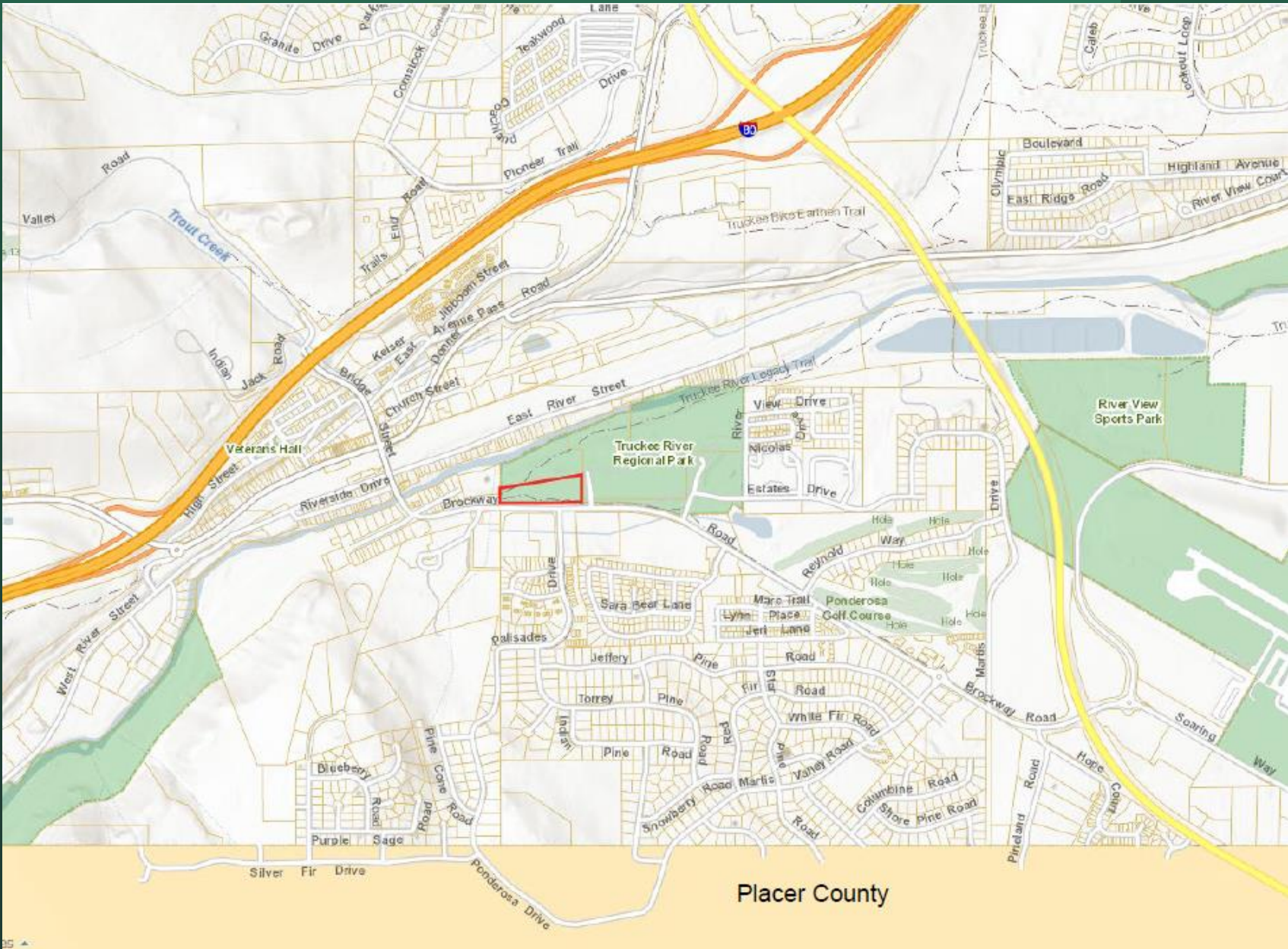
## Design and Engineering

- Following a public RFQ process, the partners engaged JKAE and Group 4 to complete the design and engineering phase for the new building
- The costs associated with the A&E contract were split equally amongst the 3 partners



# Targeted Location





Placer County



# Funding Sources

---

- **Grant Monies**
- **Capital Campaign Led by Friends of the Truckee Library**
- **Consideration of a Bond Measure**





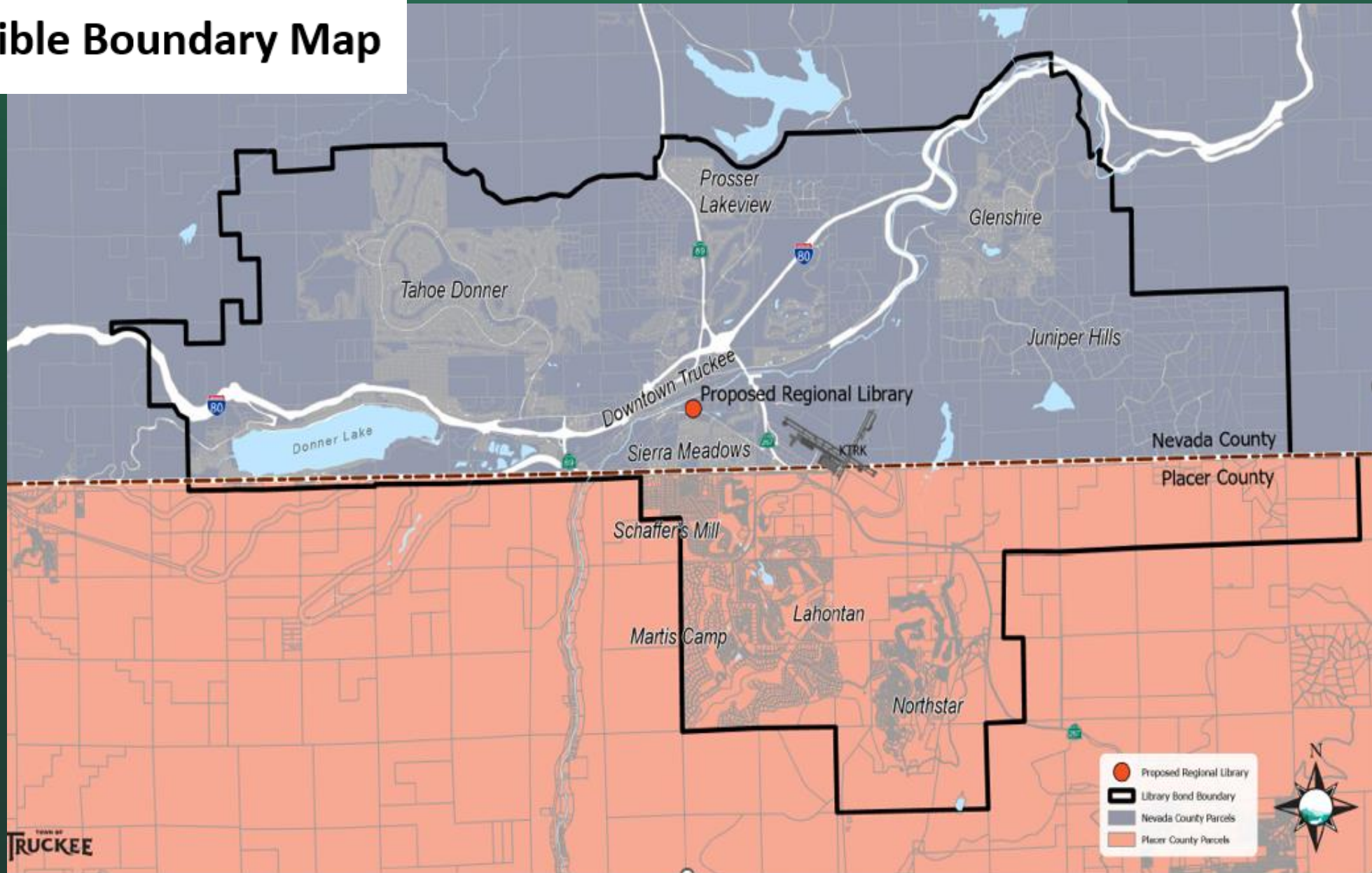


# Potential Bond Measure

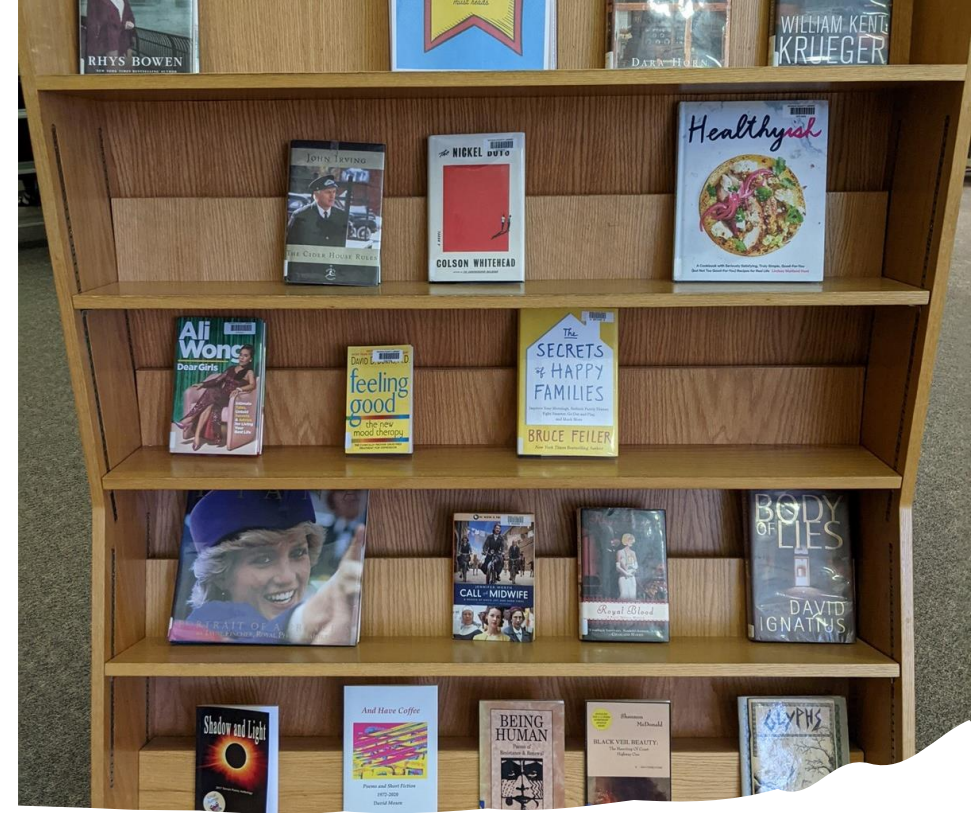
**The Library JPA has authority to issue debt**

**Likely users of the new regional library include residents from Town of Truckee, unincorporated Eastern Nevada County, and the Donner Lake, Sierra Meadows, Martis Valley, and Northstar areas of unincorporated Eastern Placer County**

# Possible Boundary Map







# Committed to Exploring Shared Service Delivery Model with Placer County



# Letter of Intent

---



Here today to bring forward a Letter of Intent:

- JPA's Request to include portions of Placer County in the boundary for the bond measure
- Nevada County's commitment to exploring a shared service delivery model with Placer County for library services in the Truckee-Tahoe Region
- Seeking Authorization for CEO to sign





# Next Steps

- **Bring Letter of Intent to Placer BOS on June 25th**
- **Identify JPA Partner For Targeted Boundaries**
- **Formally Create a CFD**
- **Conduct Polling**





---

# Questions and Discussion