

Community Wildfire Safety Program

NEVADA COUNTY BOARD OF SUPERVISORS

September 27, 2022



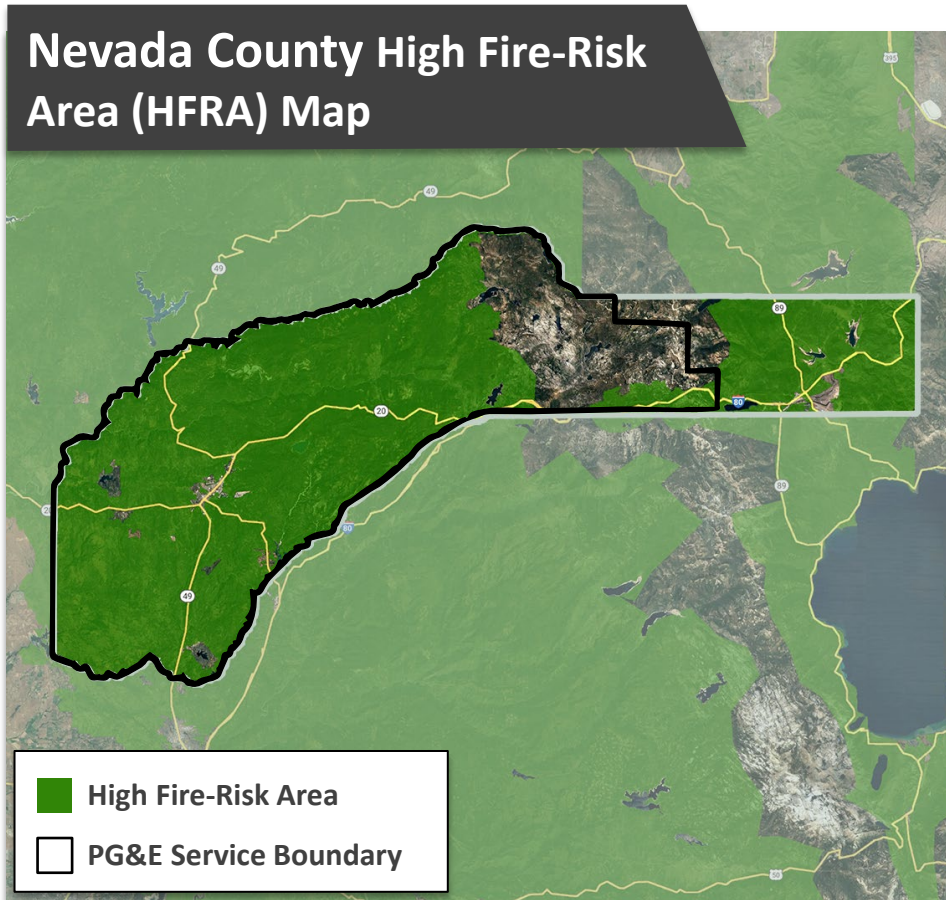


Topics for Discussion

- 1 | Wildfire Risk and Safety Work in Nevada County
- 2 | Enhanced Powerline Safety Settings (EPSS)
- 3 | Public Safety Power Shutoff (PSPS)
- 4 | Customer Resources

Identifying Wildfire Risk

We target wildfire mitigation efforts in the areas and communities at highest risk.



PG&E's High Fire-Risk Area (HFRA) map builds upon the CPUC's map, providing a greater understanding of wildfire risk and where to prioritize work.

MITIGATE WILDFIRE RISK



MINIMIZE CUSTOMER IMPACT



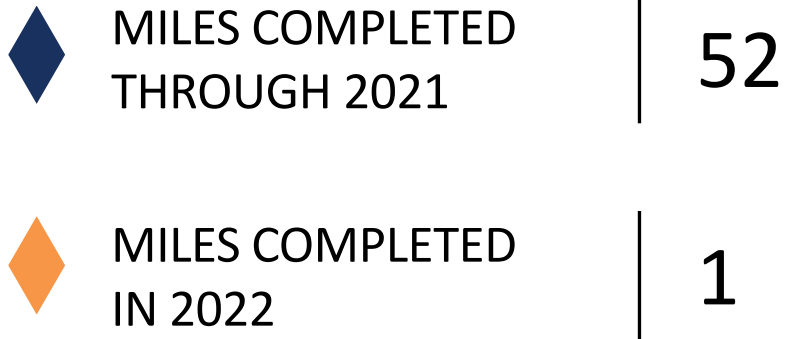
MAXIMIZE SITUATIONAL AWARENESS



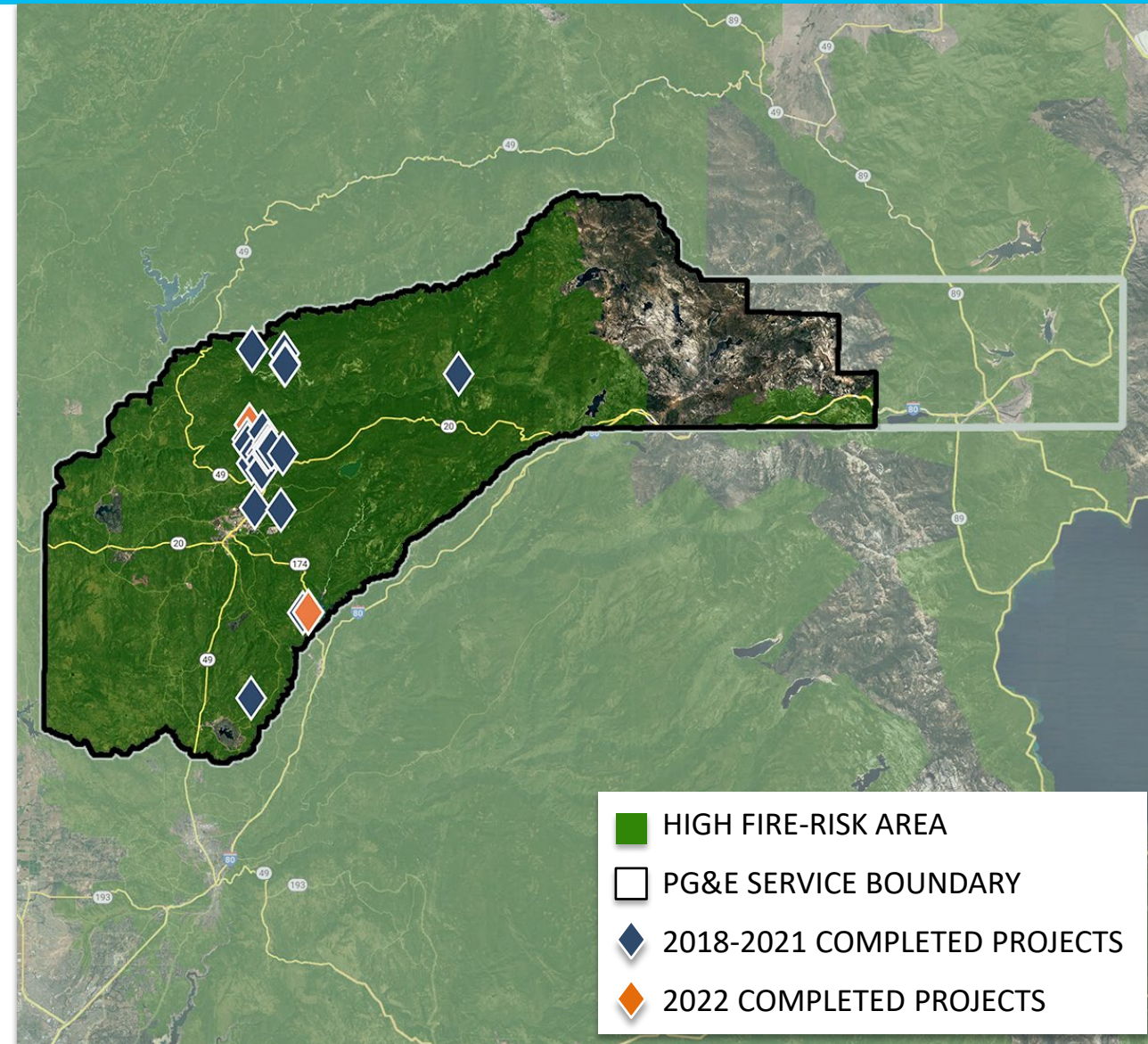


Overhead System Hardening in Nevada County

Strengthening the electric system by installing stronger poles and covered powerlines which are more resistant to severe weather and wildfire risk.



Customers can find more information on system hardening at: pge.com/systemhardening



Data as of 08/31/2022. Local work plans are subject to change. Locations are approximate and may overlap.

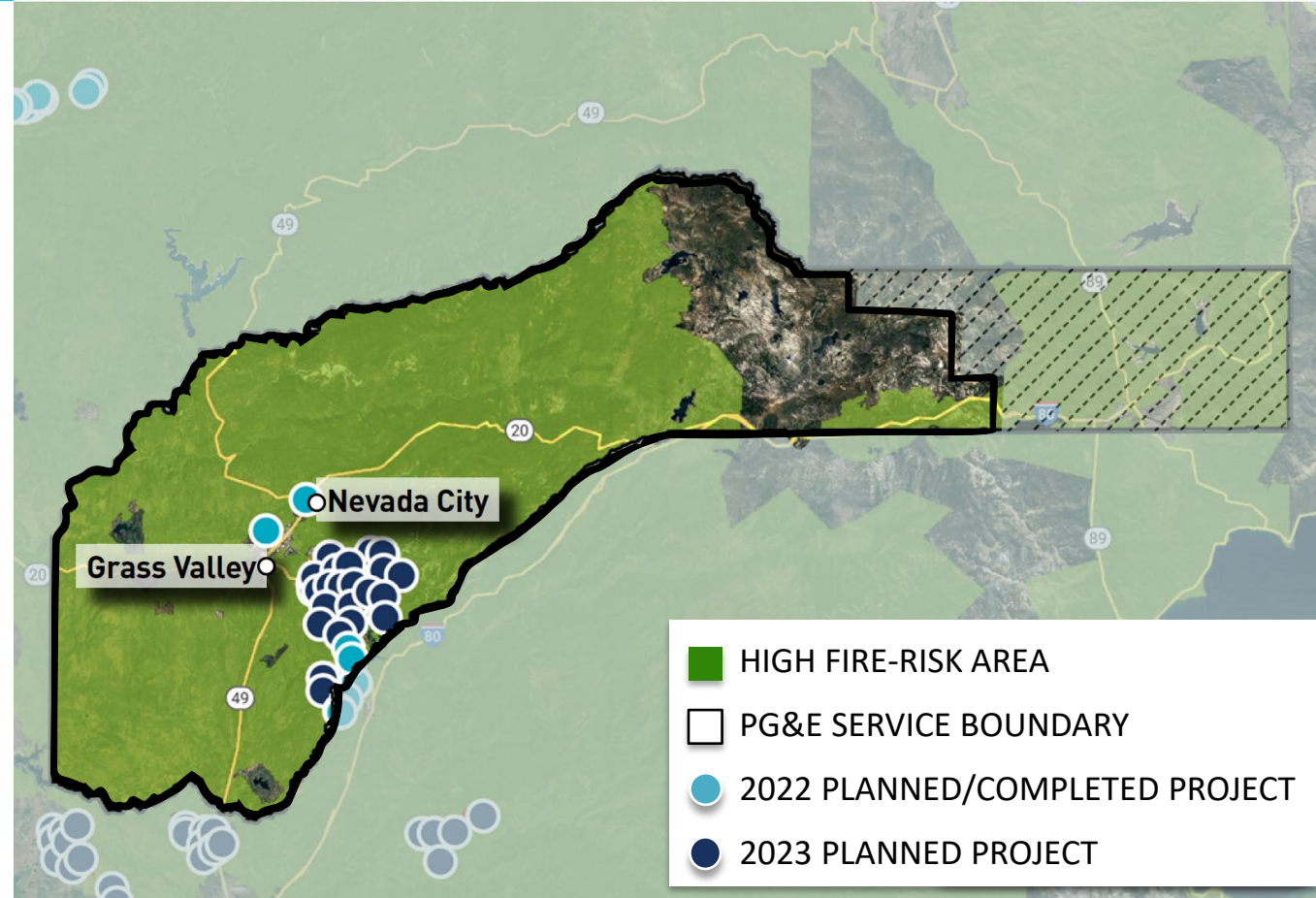
Some of the measures included in this presentation are contemplated as additional precautionary measures intended to further reduce the risk of wildfires.



Undergrounding in Nevada County

Strengthening the electric system by undergrounding our powerlines in and near high fire-threat areas.

- UNDERGROUNDING MILES PLANNED/COMPLETED IN 2022 | <1
- UNDERGROUNDING MILES PLANNED IN 2023 | 92



Note: Data is as of 09/01/2022. Planned miles reflect undergrounding projects that are in any stage of the planning process. Planned miles exceed annual targets, and mileage in your community may increase or decrease due to access, weather, permitting or other constraints. If planned work is not completed during the year originally identified it will continue through planning/construction phases during subsequent years.

Customers can find more information about our undergrounding efforts by visiting: pge.com/undergrounding

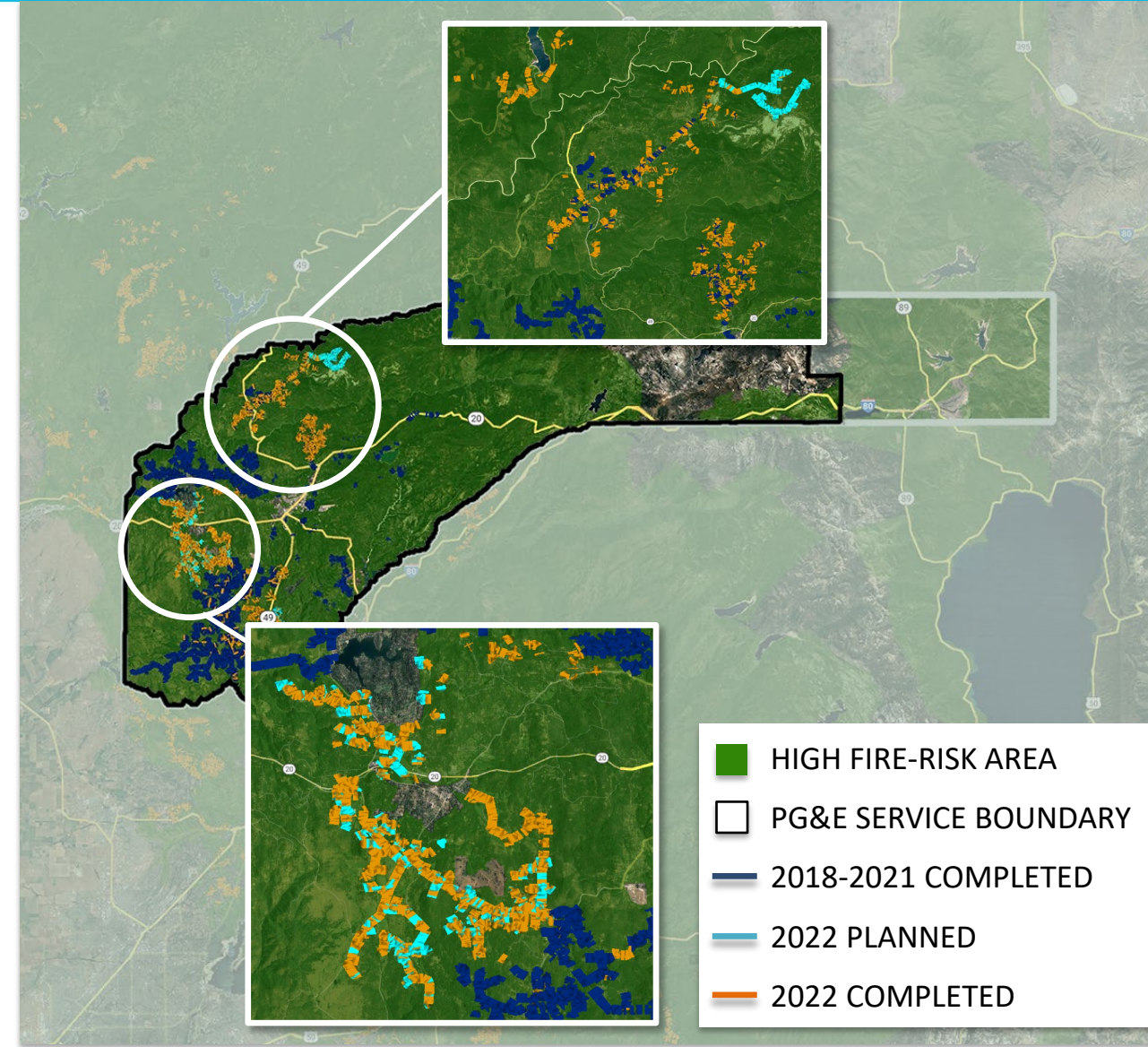


Enhanced Vegetation Management in Nevada County

Addressing vegetation that poses a higher potential for wildfire risk in high fire-threat areas.



Customers can find more information about our vegetation management work by visiting: pge.com/evm





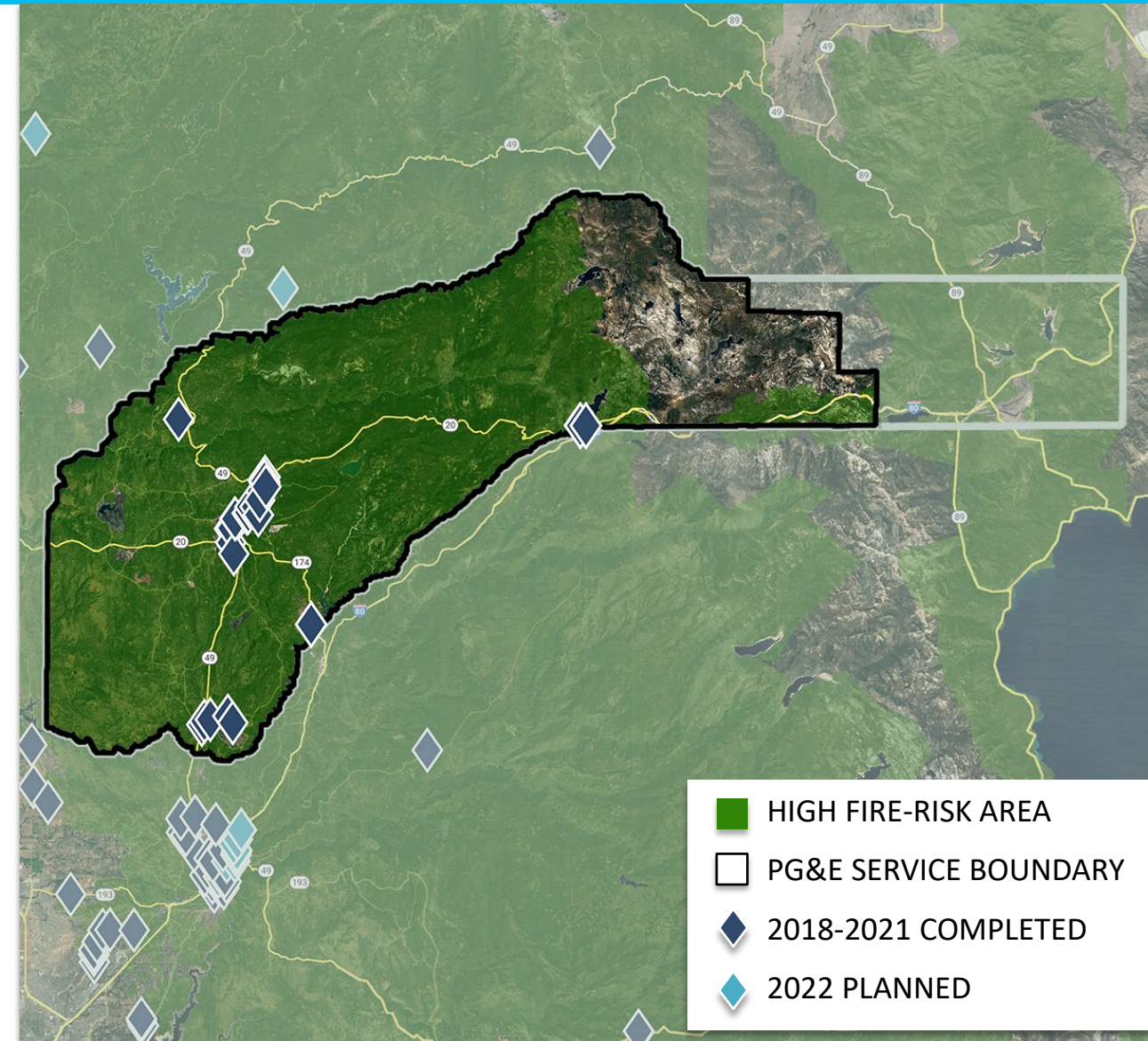
Sectionalizing Devices in Nevada County

Separating the grid into smaller sections and limiting the number of customers impacted by Public Safety Power Shutoffs (PSPS).



DEVICES COMPLETED
THROUGH 2021

28



Additional Sectionalizing Devices are adjacent to Nevada County and can potentially provide support during an outage

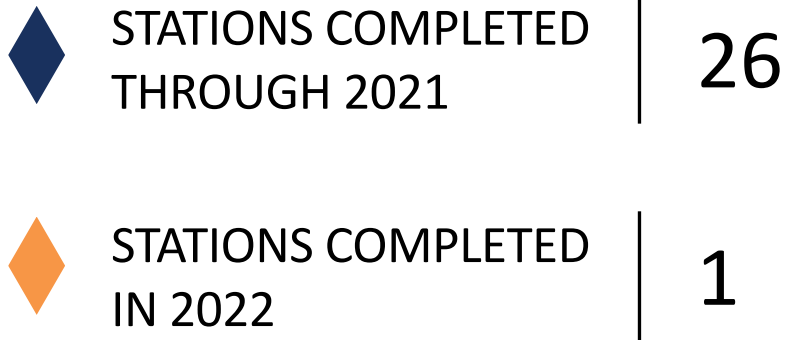
Some of the measures included in this presentation are contemplated as additional precautionary measures intended to further reduce the risk of wildfires.

Data as of 08/31/2022. Local work plans are subject to change. Locations are approximate and may overlap.



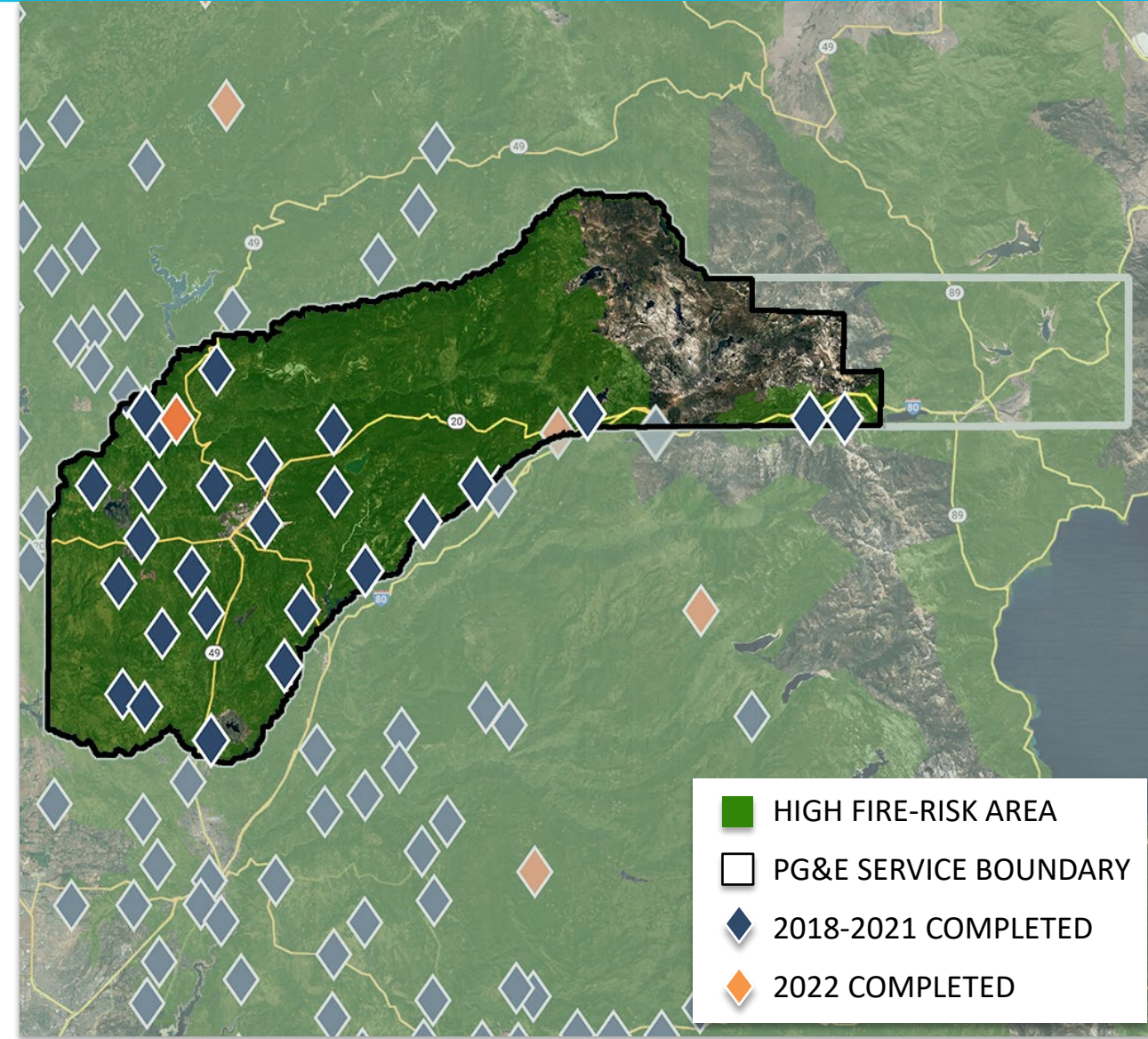
Weather Stations in Nevada County

Improving our weather forecasting capabilities and allowing us to better predict and respond to severe weather threats.



Additional Weather Stations are adjacent to Nevada County and can support weather forecasting capabilities

Customers can find more information about weather stations at: pge.com/weather



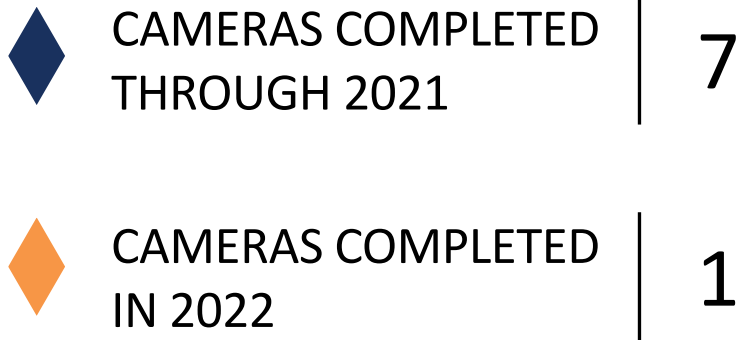
Data as of 08/31/2022. Local work plans are subject to change. Locations are approximate and may overlap.

Some of the measures included in this presentation are contemplated as additional precautionary measures intended to further reduce the risk of wildfires.



High-Definition Cameras in Nevada County

Enhancing our ability to monitor and respond to wildfires in our service area.



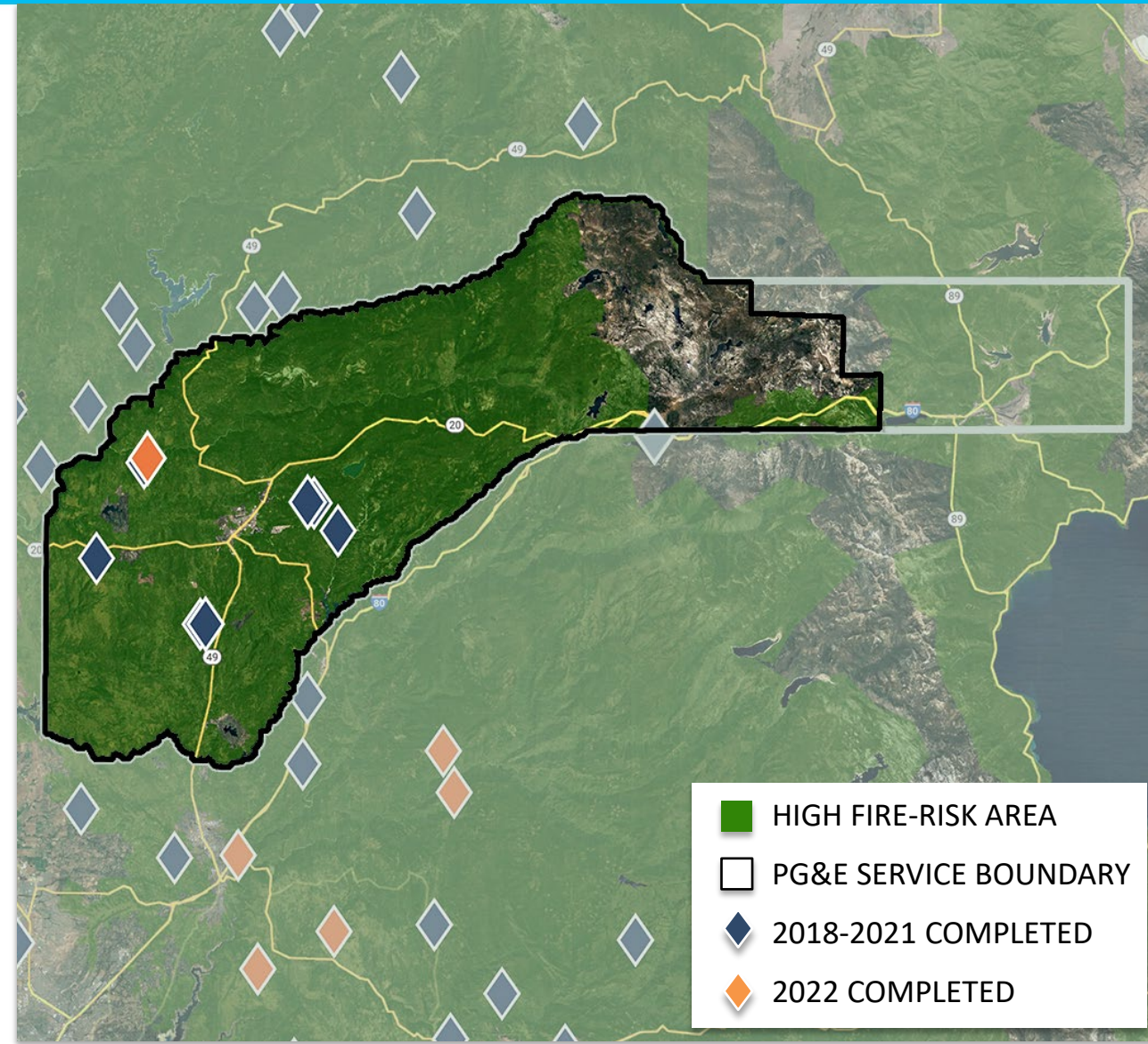
Additional Hi-Definition Cameras are adjacent to Nevada County and can support weather monitoring.

Our cameras are part of the ALERTWildfire system used by fire managers at the Bureau of Land Management, the U.S. Forest Service, CAL FIRE and local fire departments in four states.

Data and images are publicly available at:

Alertwildfire.org

pge.com/weather



Data as of 08/31/2022. Local work plans are subject to change. Locations are approximate and may overlap.

Some of the measures included in this presentation are contemplated as additional precautionary measures intended to further reduce the risk of wildfires.

Enhanced Powerline Safety Settings





Enhanced Powerline Safety Settings (EPSS) A Technology To Prevent Wildfires

How It Works

PG&E powerlines have equipment that allows power to automatically turn off within one-tenth of a second if there is a wildfire risk, like a tree branch or other object striking the line.

Why We Do It

Quickly and automatically shutting off power when a hazard is detected can help stop wildfires before they have a chance to start.

Preventing Wildfires

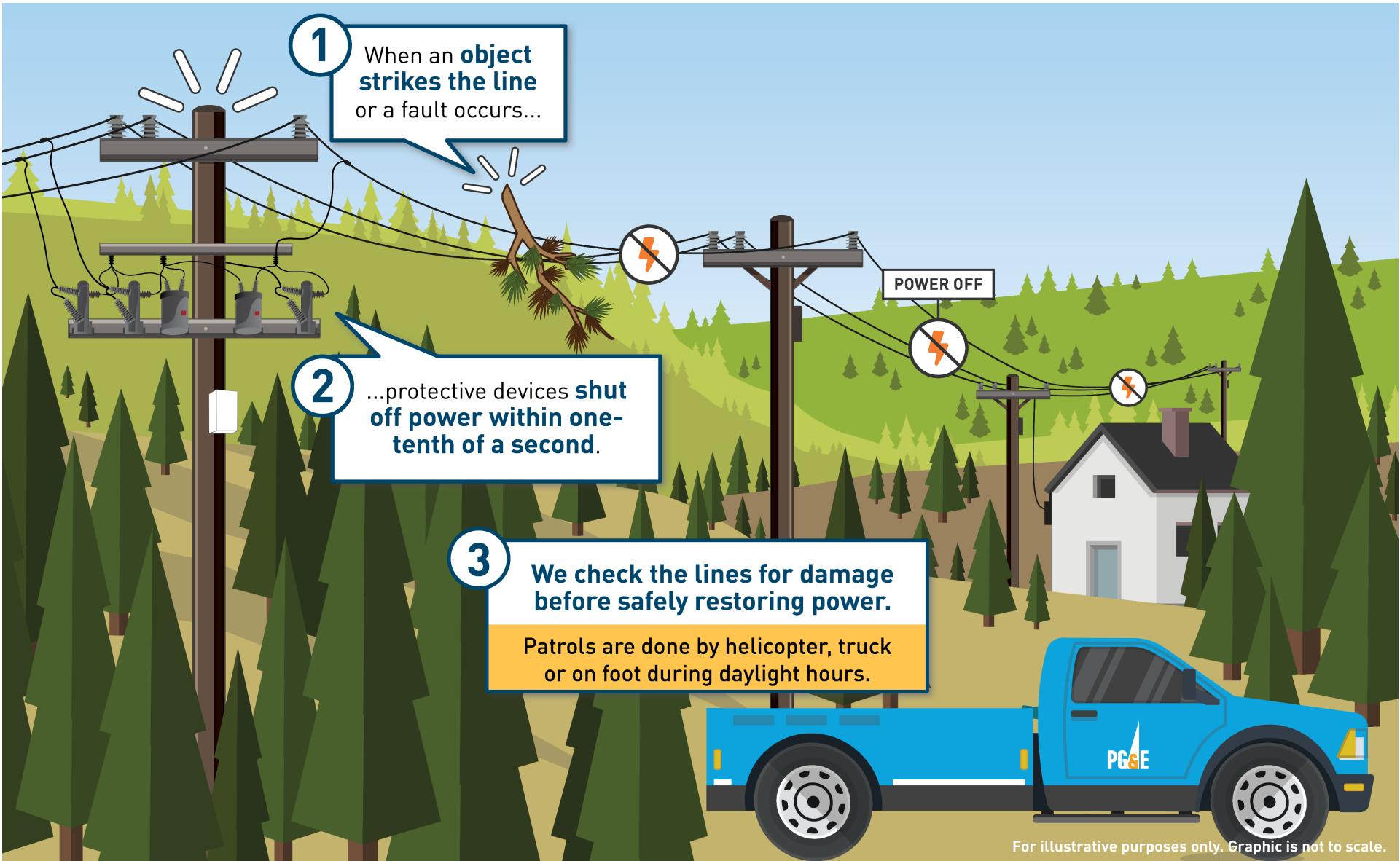
80% decrease in CPUC-reportable ignitions
in 2021 on EPSS-enabled circuits.
compared to the prior 3-year average as of 7/31/22.



SAFETY SETTINGS IN ACTION

An example of these settings preventing a potential ignition in Santa Cruz County, when a tree branch fell into a powerline in 2022 and power was quickly and automatically turned off.

What Are Enhanced Powerline Safety Settings?

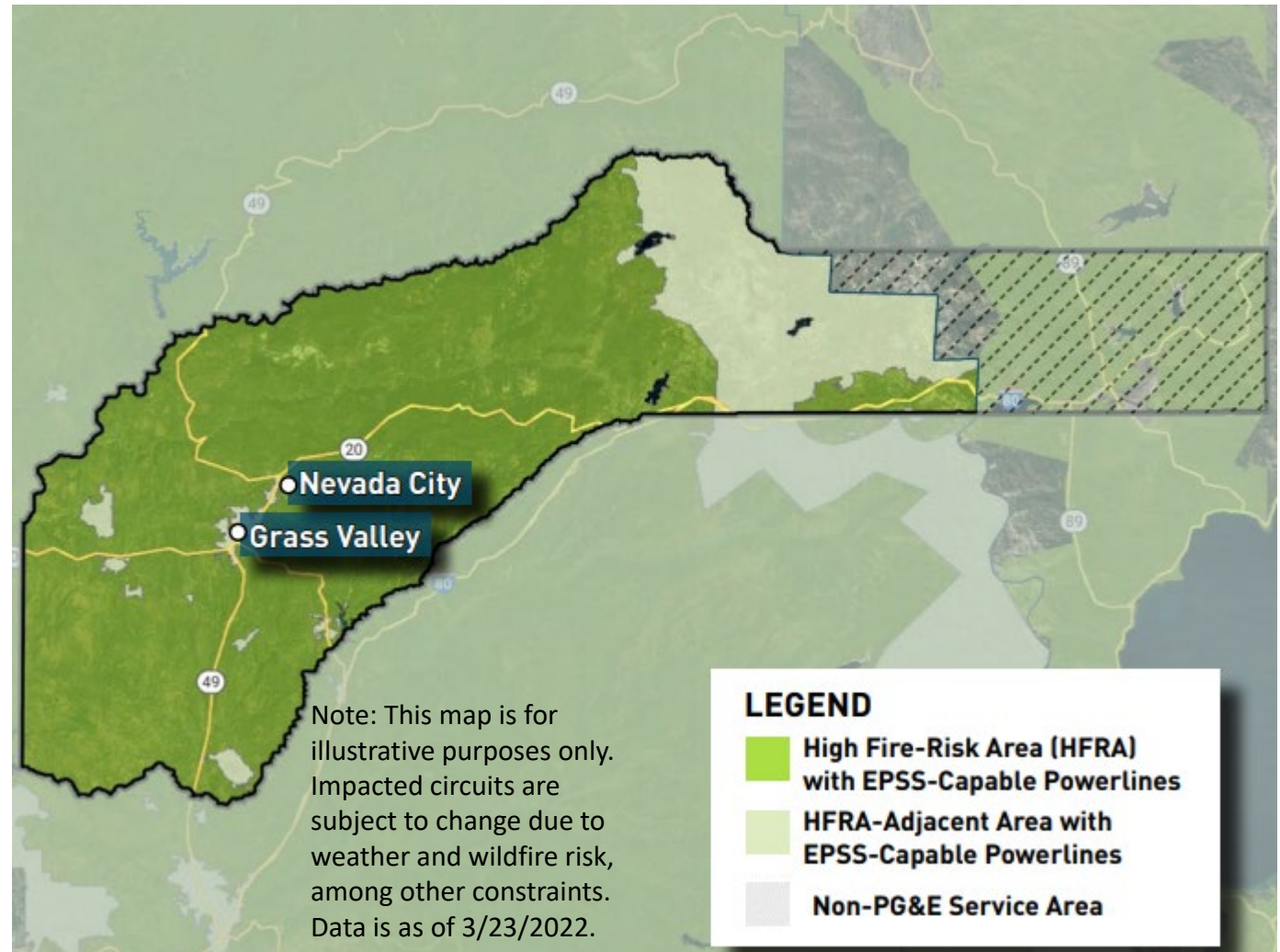


For illustrative purposes only. Graphic is not to scale.

Enhanced Powerline Safety Settings in Nevada County

How Are We Reducing Impacts?

- Providing more accurate notifications
- Reducing the number of outages
- Expanding customer resource eligibility
- Adding partnerships with community-based organizations
- Supporting customers through food resource partnerships with Meals on Wheels and local food banks



When are outages most likely to occur?

- When elevated fire risk is present.
- Most likely from May to November.

How will customers be notified?

- Through automated calls, texts or emails about when to expect the power back.
- Since outages happen automatically, we are unable to provide advance notification.



Public Safety Power Shutoff





What is a Public Safety Power Shutoff?

High winds and dangerous conditions can cause branches to contact powerlines. This could damage our equipment and cause a wildfire.

To prevent such fires, we may need to turn off power as a last resort.



What Conditions Could Lead to a PSPS?



We carefully review a combination of these factors when deciding if power must be turned off for safety



Community Resource Centers in Nevada County

During PSPS outages, we open Community Resources Centers (CRCs) where customers can access resources and up-to-date information.

CRC Locations in Nevada County

CITY	SITE	ADDRESS	TYPE
Alta Sierra / Lake of the Pines	Magnolia Intermediate School	22431 Kingston Ln	Indoor
Nevada City	Madelyn Helling Library	980 Helling Way	Indoor
North San Juan	NSJ Community Center	29190 CA-49	Indoor
Penn Valley	Ready Springs Elementary School	10862 Spenceville Road	Indoor
Grass Valley	Peace Lutheran Church	828 W. Main Street	Outdoor
Grass Valley	Sierra College Grass Valley	250 Sierra College Drive	Outdoor
Lake of the Pines	Crossroads Church	10050 Wolf Rd	Outdoor
Nevada City	Nevada City Elks Lodge	518 State Highway 49	Outdoor
Nevada City	Sierra Family Medical Clinic	15301 Tyler Foote Rd	Outdoor
Nevada City	Sierra Presbyterian Church	175 Ridge Rd	Outdoor
Penn Valley	Penn Valley Community Church	11739 Spenceville Road	Outdoor
Grass Valley	Grass Valley Veterans Memorial Building	255 S Auburn St	Indoor - In Progress

For more information and where to find a CRC location in your area leading up to and during a PSPS outage, visit [pge.com/crc](https://www.pge.com/crc)

COVID-19 CONSIDERATIONS

To keep our customers and communities safe, all CRCs reflect appropriate COVID-19 health considerations* and state and county guidelines.

- **Facial coverings are required**
- **Physical distancing** and limits on the number of visitors at any time are required
- **Temperature checks** are administered before entry into indoor facilities
- **Surfaces are regularly sanitized**

*Currently being revised to align with recent announcements for state and county guidelines.

Community Based Organization (CBO) Partnerships

We are providing targeted resources and support through our partnerships with community-based organizations.

1	Meals on Wheels
<ul style="list-style-type: none"> ▪ Gold Country Community Services 	
2	Food Banks
<ul style="list-style-type: none"> ▪ Food Bank of Nevada County ▪ Placer Food Bank 	

We are partnering with

3

community-based organizations
in your hometown



Customer Resources





Customer Resources and Support for PSPS Outages and EPSS

Portable Battery Program

Supporting eligible customers with fully subsidized portable battery solutions.

pge.com/pspsresources



California Foundation for Independent Living Centers

Providing qualifying customers with hotel stays, food stipends and more.

cfilc.org



Generator and Battery Rebate Program

Rebates for eligible customers to purchase a qualifying generator or battery.

pge.com/backupper



Partnership with 211

24-7 free and confidential support and resources via calls or texts to 211.

211ca.org

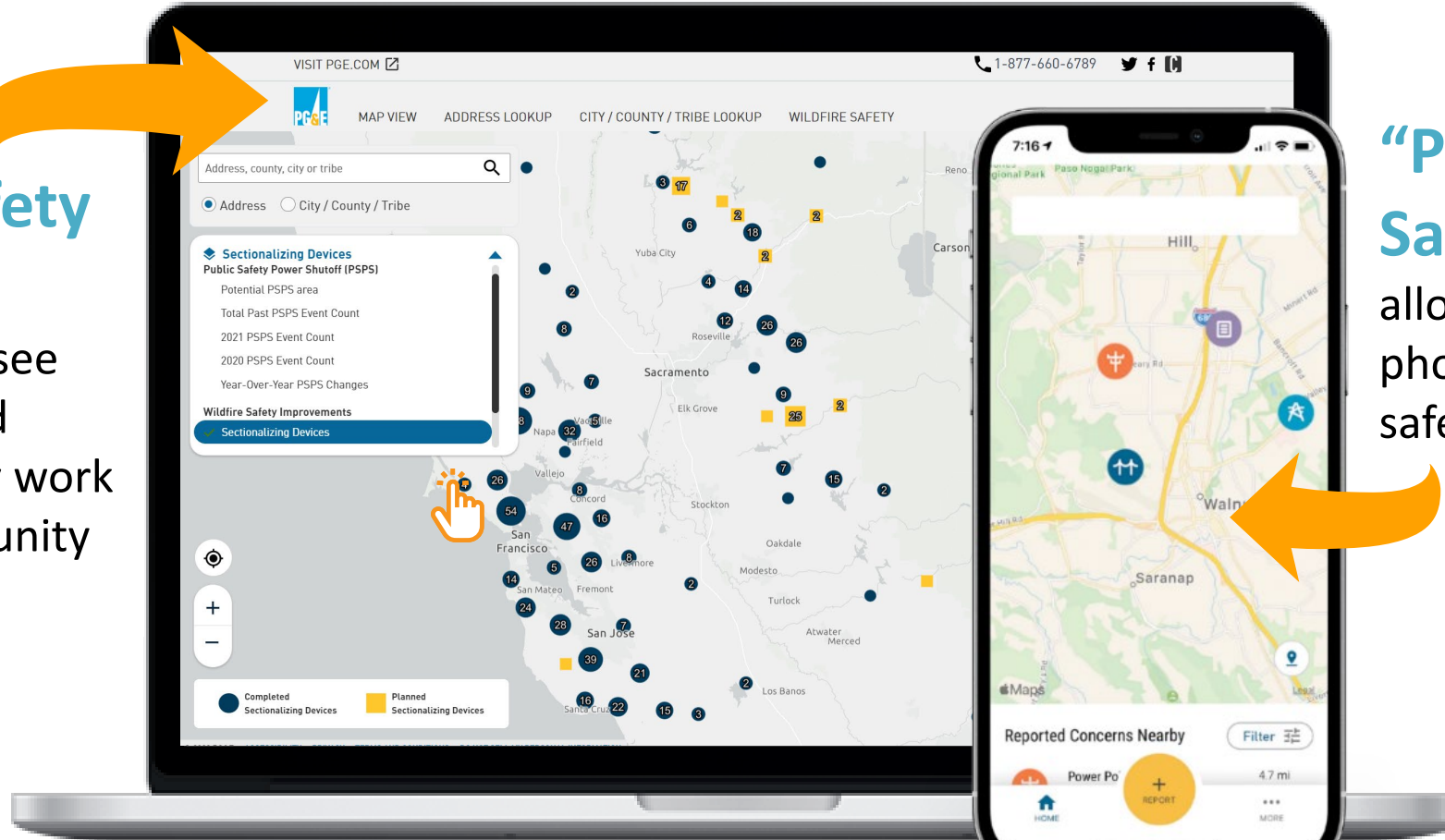




Personalized Information for Our Customers

Online Safety Maps

let customers see completed and planned safety work in their community



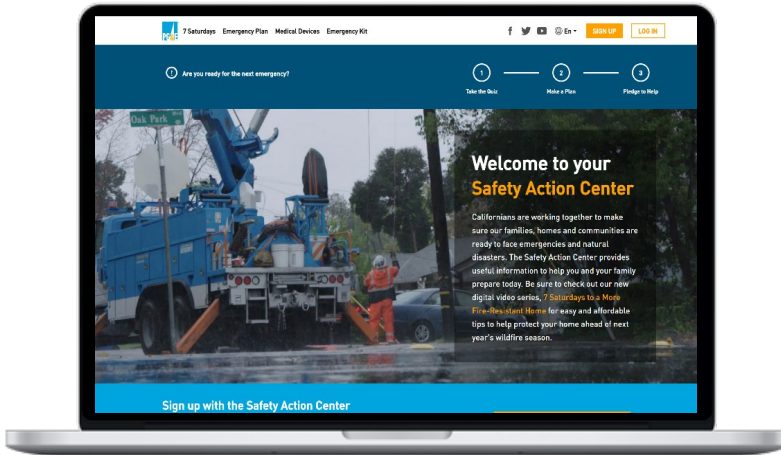
“PG&E Report It” Safety App

allows customers to submit photos of non-emergency safety concerns

pge.com/customerpspsplanningmaps

pge.com/reportit

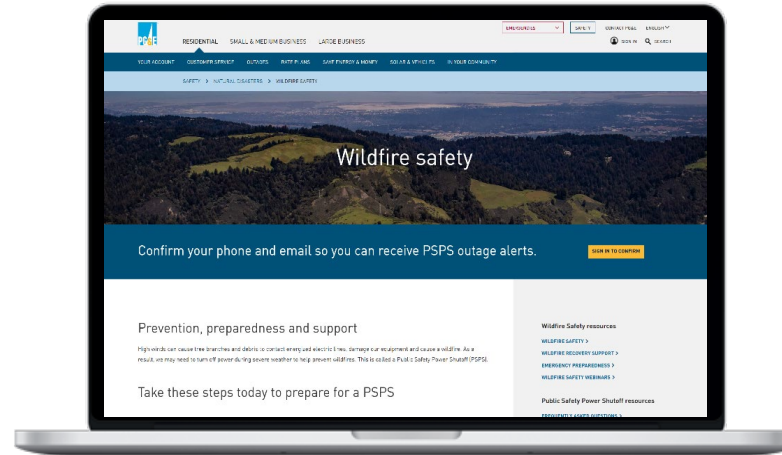
Safety Action Center



Prepare for wildfire season

safetyactioncenter.pge.com

Wildfire Safety



Wildfire prevention efforts

pge.com/wildfiresafety

Safety for Kids



Teach kids emergency safety

kidsemergencysafety.com

Dedicated wildfire safety contacts

Hotline: 1-866-743-6589 | Email: wildfiresafety@pge.com

Thank You

