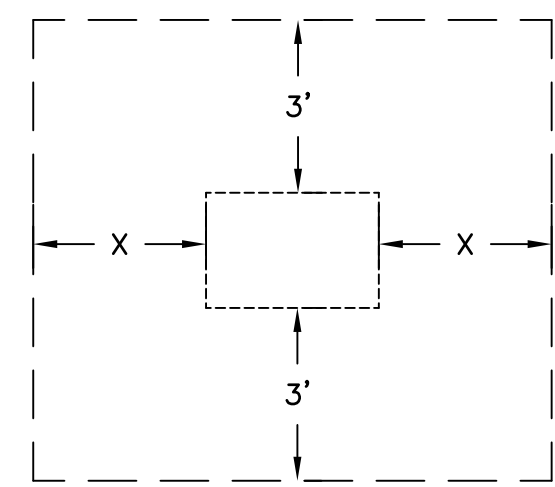


GENERAL NOTES:

1. DEVELOPER TO DO ALL TRENCHING, SHADING, AND BACKFILLING PER UO STANDARD S-5453.
2. PHONE AND CABLE TV FACILITIES ARE SUBJECT TO CHANGE AT THE DISCRETION OF THOSE COMPANIES.
3. PADS, BOXES AND OTHER FACILITIES ARE NOT SHOWN TO SCALE.
4. GAS AND ELECTRIC FACILITIES WILL REQUIRE SAND SHADING IF NATIVE SOIL IS NOT ROCK-FREE. PG&E WILL INSPECT BACKFILL MATERIAL. TEL AND/OR CATV MAY ALSO REQUIRE 12" OF SAND BACKFILL.
5. GROUND TO BE WITHIN 2 FT OF FINISH GRADE PRIOR TO TRENCHING.
6. GAS AND ELECTRIC FACILITIES REQUIRE AT LEAST 3' OF SEPARATION (1' UNDISTURBED SOIL) FROM PARALLEL RUNS OF WATER, SEWER, OR STORM DRAIN.
7. PRE-CONSTRUCTION MEETING REQUIRED TWO WEEKS PRIOR TO THE START OF INSTALLATION.
8. CALL U.S.A. AT LEAST 48 HOURS PRIOR TO TRENCHING (DIAL 811)
9. PG&E WILL ASSIST IN LOCATING ENDS OF EXISTING GAS MAINS.
10. DEVELOPER IS RESPONSIBLE FOR OBTAINING ENCROACHMENT PERMITS.
11. STREETLIGHT LOCATIONS MAY HAVE CHANGED. REFER TO THE APPROVED STREETLIGHT IMPROVEMENT PLAN FOR STREETLIGHT INSTALLATION.
12. DEVELOPER SHALL CONTACT ALL INVOLVED PARTIES PRIOR TO MAKING ANY CHANGES FROM THIS DRAWING.
13. REFER TO EACH PARTY'S INSTALLATION INSTRUCTIONS FOR MORE PRECISE DESCRIPTION OF SUBSTRUCTURES AND OTHER REQUIREMENTS.



X = 3' FOR ROUND OR SQUARE, 3'x5' INTERIOR DIMENSIONS
 X = 4' FOR 4' x 6'-6" INTERIOR DIMENSIONS
 X = 5' FOR 4'-6" x 8'-6" INTERIOR DIMENSIONS

PRIMARY ENCLOSURE CLEARANCES

PER PGE GREENBOOK UG-1 GENERAL 051122 PAGE 4
 PRIMARY ENCLOSURE CLEARANCES
 (SEE TABLE 1 FOR J-BOX CLEARANCES)

- LEGEND:**
- P ELECTRIC PRIMARY - SMUD
 - S ELECTRIC SECONDARY - SMUD
 - C CABLE TV
 - / SLASH INDICATES CHANGE IN OCCUPANCY
 - PROPOSED SERVICE TRENCH
 - PROPOSED MAIN LINE TRENCH
 - EXISTING UNDERGROUND FACILITY
 - PROPERTY LINE
 - [5] EXISTING #5 SUB-SURFACE ENCLOSURE
 - [6] PROPOSED #6 (4' x 6'-6" x 5') SUB-SURFACE ENCLOSURE
 - PROPOSED ELECTRIC METER / MPOE
 - ▲ PROPOSED PAD MOUNTED TRANSFORMER
 - ⬡ INDICATES TRENCH FOOTAGE & OCCUPANCY

ALL FIELD CHANGES REQUIRE PRIOR APPROVAL FROM:

	COMPANY	TELEPHONE
1. MELODY "M" KHO	P G & E	(530) 889-3266
2. TEMOC ALVAREZ	COMCAST	(530) 332-5980

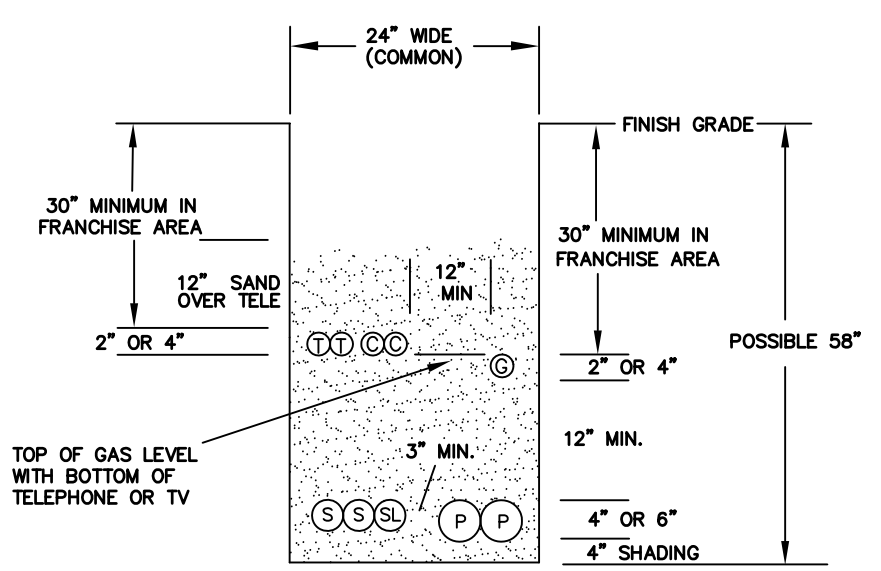
JOINT TRENCH RECAP

TRENCH OCCUPANTS	DISTRIBUTION OR SERVICE	TRENCH SIZE DEPTH	FOOTAGE	BACKFILL	SURFACE
PC	DIST	24" x 59"	19'	SPREAD	DIRT
C	DIST	24" x 59"	38'	SPREAD	DIRT
P	DIST	24" x 59"	372'	SPREAD	DIRT
SC	SERV PRIVATE	18" x 46"	81'	SPREAD	DIRT
PC	SERV 3RD PARTY	18" x 46"	262'	SPREAD	DIRT
PSC	SERV + 3rd PARTY	18" x 46"	110'	SPREAD	DIRT
C	SERV PRIVATE	18" x 46"	21'	SPREAD	DIRT
S	SERV PRIVATE	18" x 46"	25'	SPREAD	DIRT
P	SERV 3rd PARTY	18" x 46"	7'	SPREAD	DIRT
P	SERV 3rd PARTY	18" x 46"	9'	SPREAD	DIRT

Utility Standard S5453, "Joint Trench," Exhibit B is updated per this bulletin as follows:

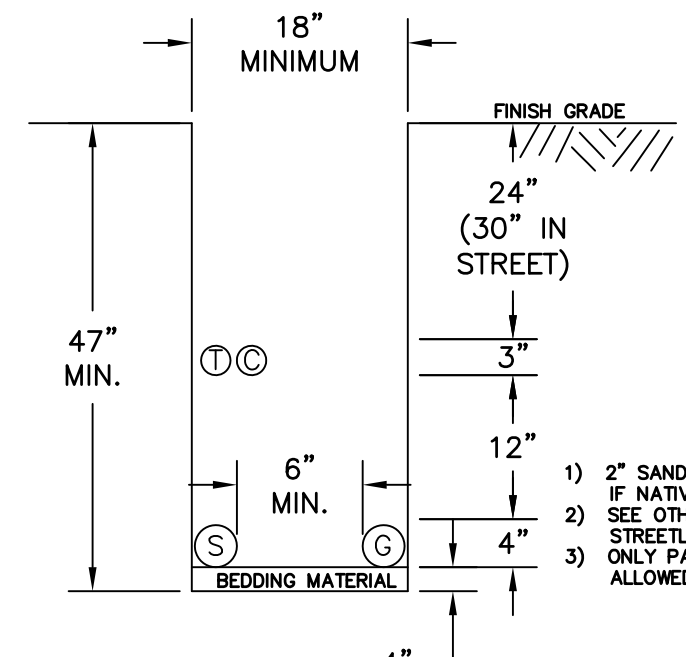
MINIMUM SEPARATION AND CLEARANCE REQUIREMENTS (Inches)									
	G	DU	DB	C	S	P	SL	MINIMUM COVER	
	(SEE NOTES 4, 7, & 13)	T	T	T	T	T	T		
G (GAS)	-	12	12	12	6	12	6	24"	30" IN STREET
T (TELEPHONE DUCT)	-	1	1	12	12	12	12	24"	30" IN STREET
T (TELEPHONE DIRECT BURY)	-	1	-	12	12	12	12	24"	30" IN STREET
C (CATV)	-	1	-	12	12	12	12	24"	30" IN STREET
S (ELECTRIC SECONDARY)	6	12	12	12	1.5	3	1.5	24"	30" IN STREET
P (ELECTRIC PRIMARY)	12	12	12	12	3	3	3	36"	36" IN STREET
SL (STREETLIGHT)	6	12	12	12	1.5	3	1.5	24"	30" IN STREET
FE* (FOREIGN ELECTRIC SOURCES, NON-PG&E*)	12	12**	12**	12**	12	12	12	24"	30" IN STREET

*Must be considered a "Utility" as defined in Utility Standard S5453, "Joint Trench," Notes 4, 5, 7, and 13 are located in Utility Standard S5453, Exhibit B, "Joint Trench Configurations and Occupancy Code."
 **For exceptions, refer to 6.0.178 rule, Section B, Items (1) and (2).



- 1) 2" SAND SHADING AROUND GAS & ELECTRIC IF SOIL IS NOT ROCK FREE
- 2) ONLY PARTIES PARTICIPATING IN U.S.A. ARE ALLOWED IN JOINT TRENCH
- 3) ANY PARTY EXCEEDING ITS TRENCH ALLOTMENT SHALL MAKE ARRANGEMENTS TO ENSURE THAT TRENCH WILL ACCOMMODATE ADDED FACILITIES
- 4) GAS TO GO ON SIDE OF TRENCH NEAREST STREET
- 5) TRENCH LAYOUT SHALL CONFORM TO UO STANDARD S5453.

TYPICAL DISTRIBUTION TRENCH



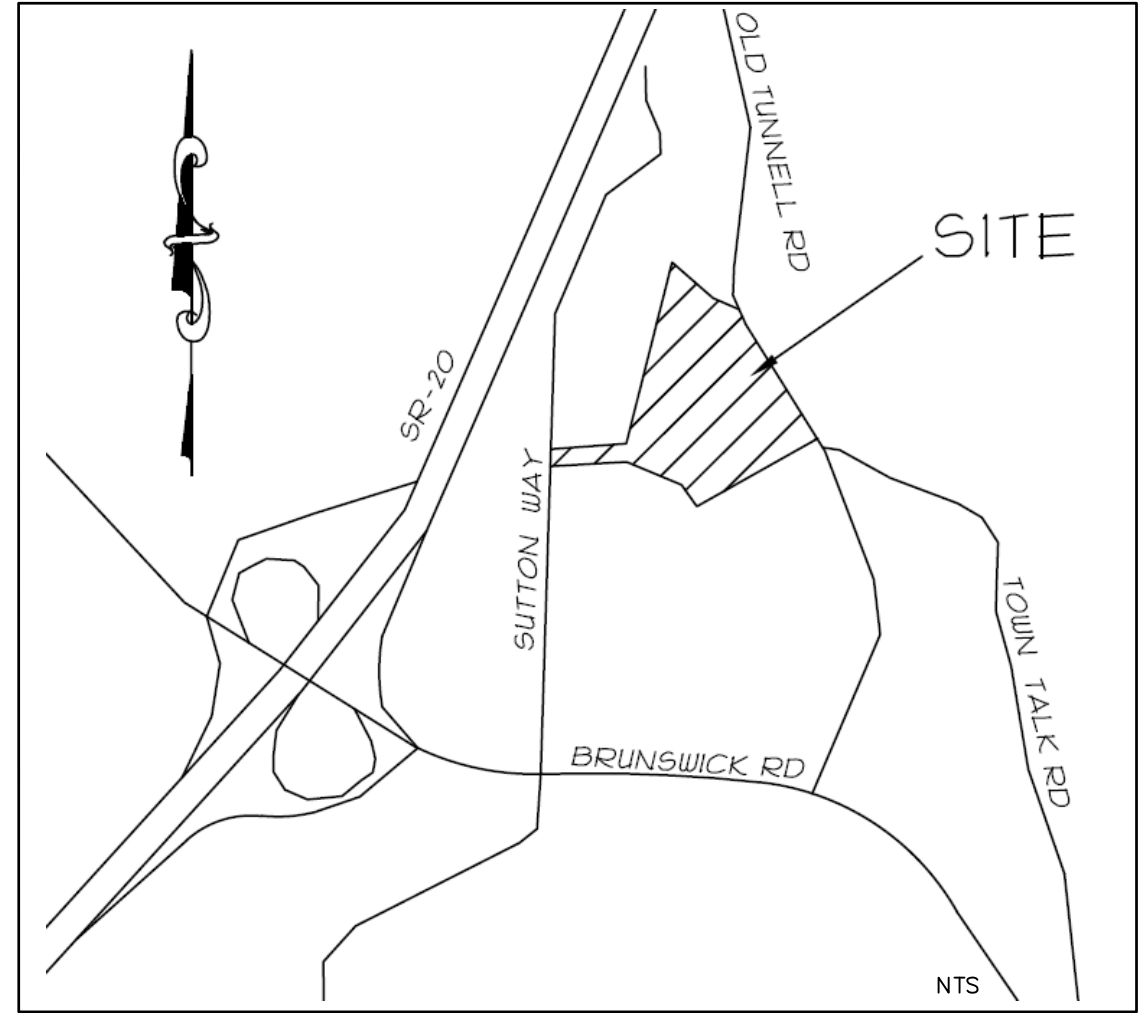
- 1) 2" SAND SHADING AROUND GAS & ELECTRIC IF NATIVE SOIL IS NOT ROCK FREE.
- 2) SEE OTHER DETAIL IF NON-PG&E STREETLIGHT IS IN TRENCH
- 3) ONLY PARTIES PARTICIPATING IN U.S.A. ARE ALLOWED IN THIS TRENCH

TYPICAL SERVICE TRENCH

FOR TRENCH INSPECTION
 CALL (916) 386-5112

ANY CHANGES TO THIS DESIGN MUST FIRST BE APPROVED BY PG&E.
 GAS ADE: _____
 PHONE: _____

JOINT TRENCH COMPOSITE APPROVED BY:
 GAS ADE: _____
 ELECT ADE: _____
 DATE: _____



VICINITY MAP

NOTE:
 ALL SERVICES AND SUB-STRUCTURES ARE NOT TO SCALE FOR CLARITY.
 ALL COMPONENTS SHALL FIT WITHIN THE PUE OR FRANCHISE AREA UNLESS OTHERWISE NOTED. REFER TO DETAILS FOR LOCATIONS.



SUBSTRUCTURE VERIFICATION STAMP

DEVELOPER
 PLEASE NOTE AND SIGN

ALL P.G.& E. ENCLOSURES AND BOXES HAVE BEEN SET TO GRADE ACCORDING TO GRADE STAKES PROVIDED BY DEVELOPER'S ENGINEER. ALL COSTS TO RELOCATE OR RE-ADJUST BOXES AT A LATER DATE WILL BE BILLED TO THE DEVELOPER. PLEASE HAVE YOUR JOB SUP. VERIFY THE CORRECTED GRADE OF ALL ENCLOSURES AND BOXES. AND SIGN AND DATE DRAWING.

THANK YOU
 SIGNED _____
 DATE _____

NOTE: USE THIS DRAWING FOR STAKING TRENCHES ONLY. REFER TO APPROVED ELECTRICAL DRAWINGS FOR ELECTRIC FACILITY PLACEMENT, DETAILS, AND CLEARANCES.

TRENCHING COMPOSITE

PROJECT INFO:
 BRUNSWICK COMMONS
 936 OLD TUNNEL ROAD
 GRASS VALLEY, CALIFORNIA
 1 BUILDING, 41 UNITS

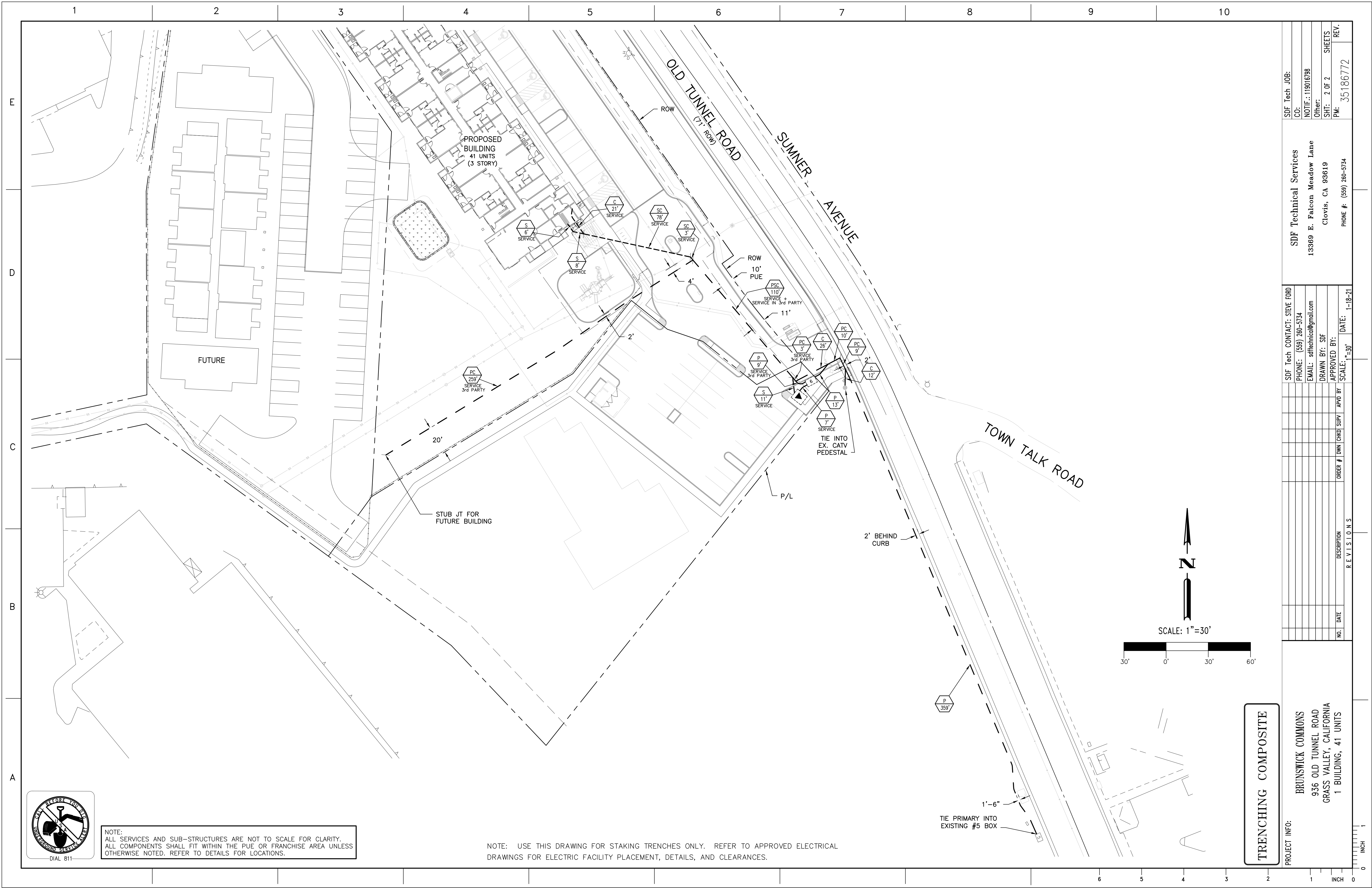
SDF Tech JOB:
 CO: _____
 NOTIF: 119016798
 SDF Technical Services
 13369 E. Falcon Meadow Lane
 Clovis, CA 93619
 PHONE #: (559) 260-5734

SDF Tech CONTACT: STEVE FORD
 PHONE: (559) 260-5734
 EMAIL: sdftechnical@gmail.com
 DRAWN BY: SDF
 APPROVED BY: _____
 SCALE: NO SCALE
 DATE: 1-18-21

ORDER # DWN CHKD SUPV APVD BY
 SHEETS 1 OF 2
 SHEETS 35106772
 REV. _____

R E V I S I O N S

0 1 INCH



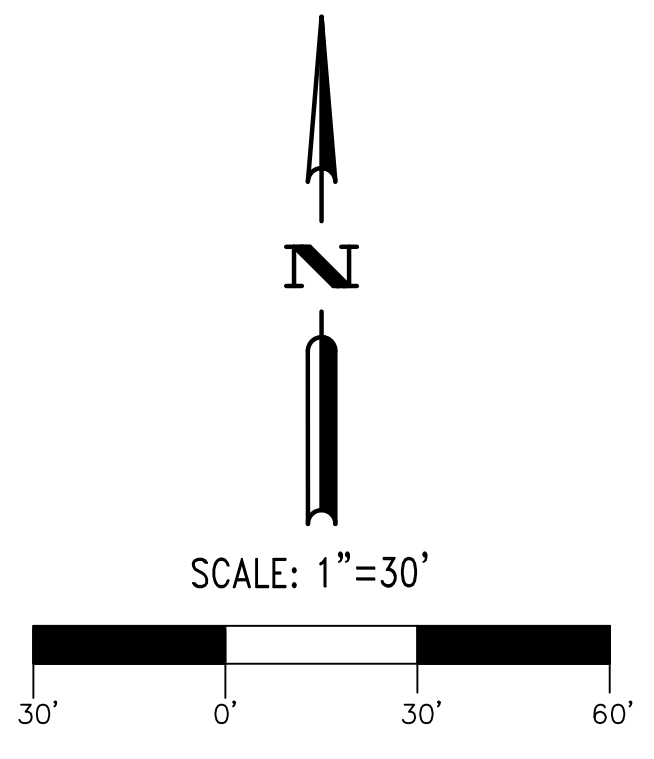
1 2 3 4 5 6 7 8 9 10

E
D
C
B
A



NOTE:
ALL SERVICES AND SUB-STRUCTURES ARE NOT TO SCALE FOR CLARITY.
ALL COMPONENTS SHALL FIT WITHIN THE PUE OR FRANCHISE AREA UNLESS OTHERWISE NOTED. REFER TO DETAILS FOR LOCATIONS.

NOTE: USE THIS DRAWING FOR STAKING TRENCHES ONLY. REFER TO APPROVED ELECTRICAL DRAWINGS FOR ELECTRIC FACILITY PLACEMENT, DETAILS, AND CLEARANCES.



TRENCHING COMPOSITE

PROJECT INFO: BRUNSWICK COMMONS 936 OLD TUNNEL ROAD GRASS VALLEY, CALIFORNIA 1 BUILDING, 41 UNITS		SDF Tech JOB: CO: 119016798 NOTIF.: 119016798 Other: SHT: 2 OF 2 SHEETS PM: 35196772 REV.	
SDF Tech CONTACT: STEVE FORD PHONE: (559) 260-5734 EMAIL: sdftechnical@gmail.com		SDF Technical Services 13369 E. Falcon Meadow Lane Clovis, CA 93619 PHONE #: (559) 260-5734	
DRAWN BY: SDF	ORDER # TOWN CHRG SUPV	APPROVED BY:	DATE: 1-18-21
NO.	DATE	DESCRIPTION	SCALE: 1"=30'

0 1 INCH