

Creating Firewise Communities



**2010 National Fire Protection Association's
Firewise Leadership Award Winner**



Overview

- **Scope and Purpose of Community Wildfire Protection Plan (CWPP)**
- **National Cohesive Wildland Fire Management Strategy**
- **Risk Analysis & WUI**
- **CWPP Projects**
- **Collaboration example = Western Nevada County Community Defense Project (WNCCDP)**
- **Firewise Communities**

Healthy Forest Restoration Act

- CWPP required for federal funding
- Analysis to protect “communities at risk”
- Define WUI
- National Cohesive Wildfire Management Strategy = Fire Adapted Communities aka help people help themselves



National Cohesive Wildland Fire Management Strategy

1. Restore and maintain resilient landscapes
2. Create Fire Adapted Communities
3. Safe and Effective wildland fire response

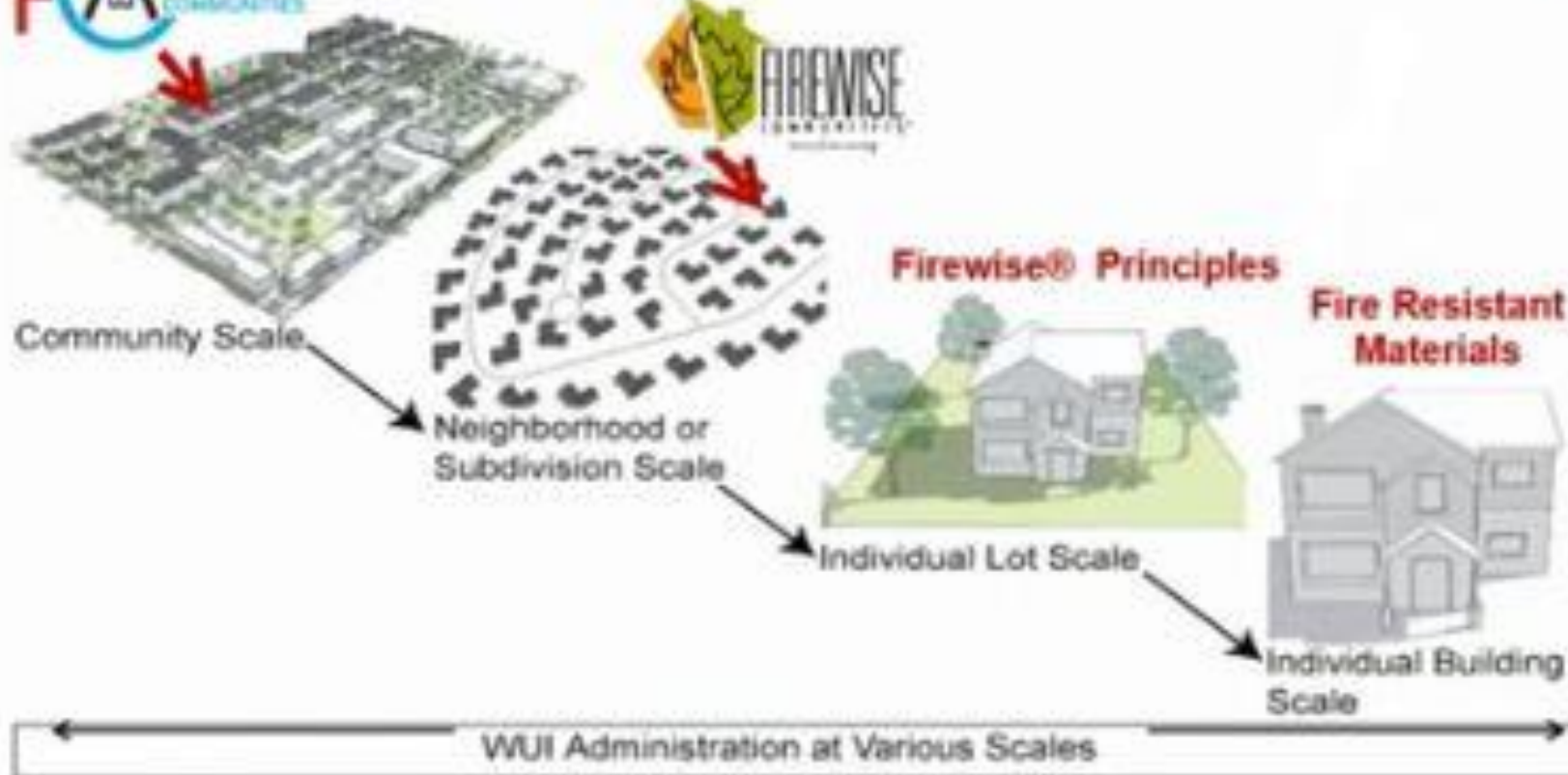
National Cohesive Wildland Fire Management Strategy



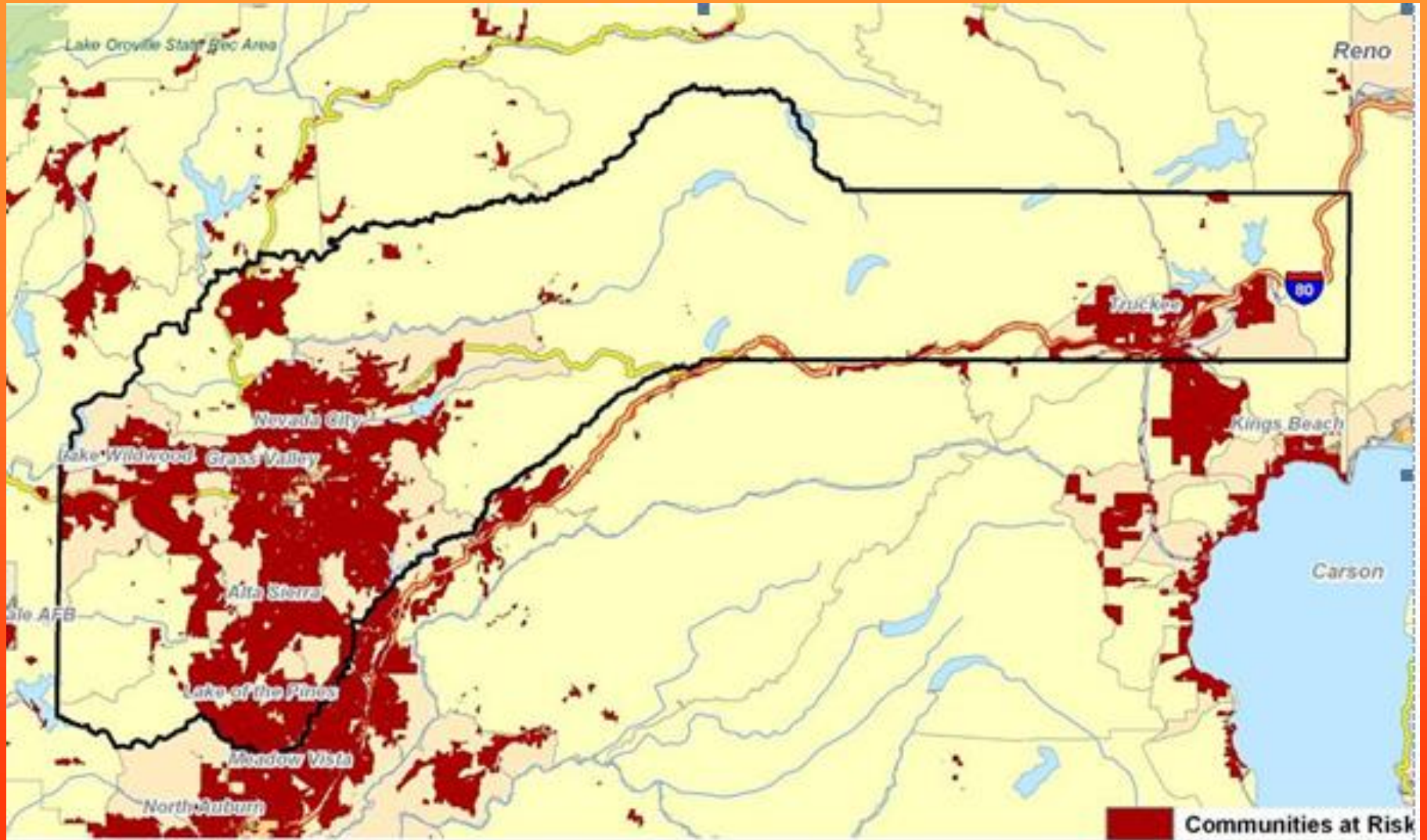
...is a collaborative process to seek national, all-lands solutions to wildland fire management issues, focusing on three goals:

Considering the Whole Community

Firewise to Fire Adapted Communities (FAC)



Registered Communities at Risk

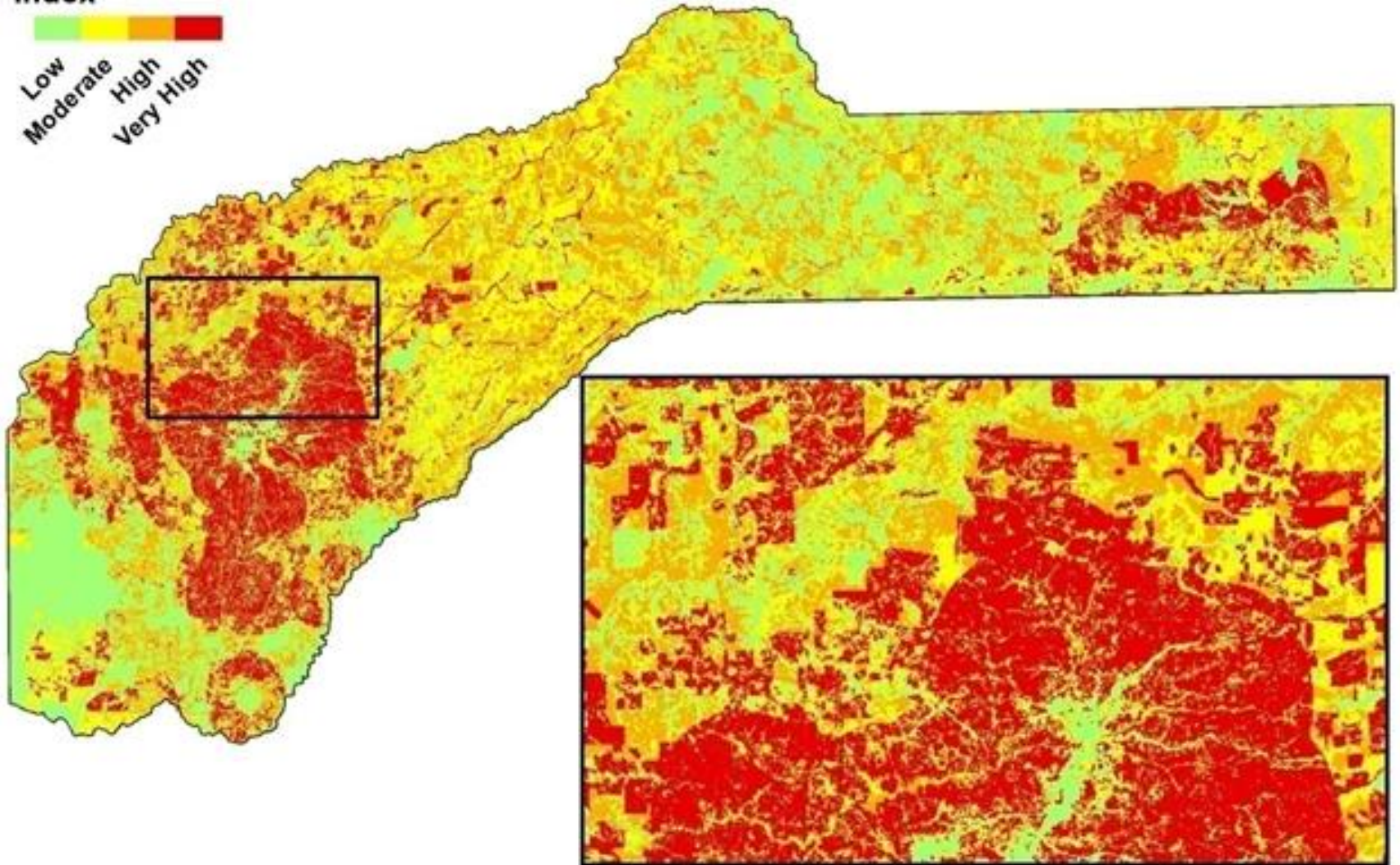


Hazard Reduction Priorities

Community Hazard Reduction Priorities
Index

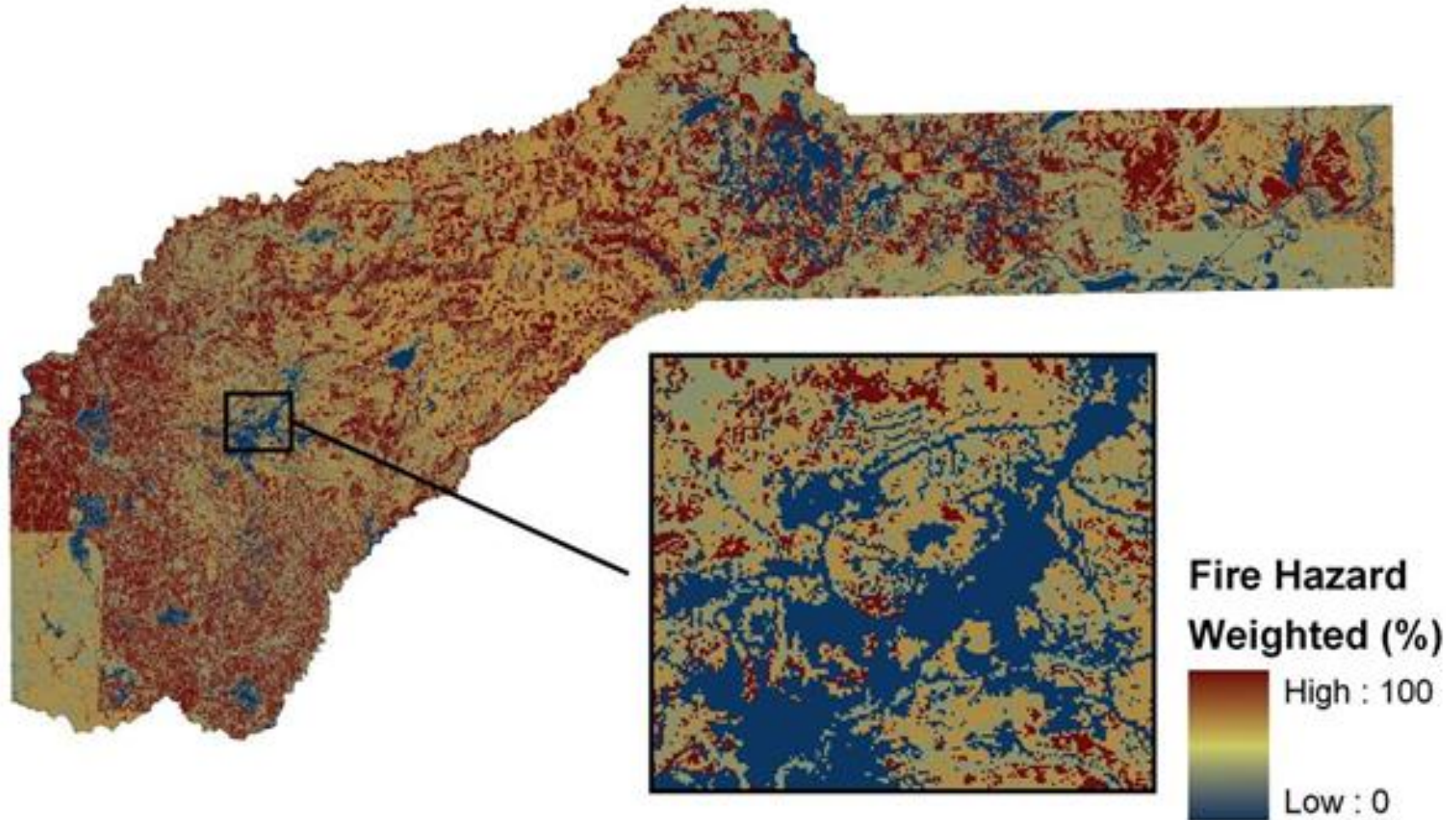


Low
Moderate
High
Very High

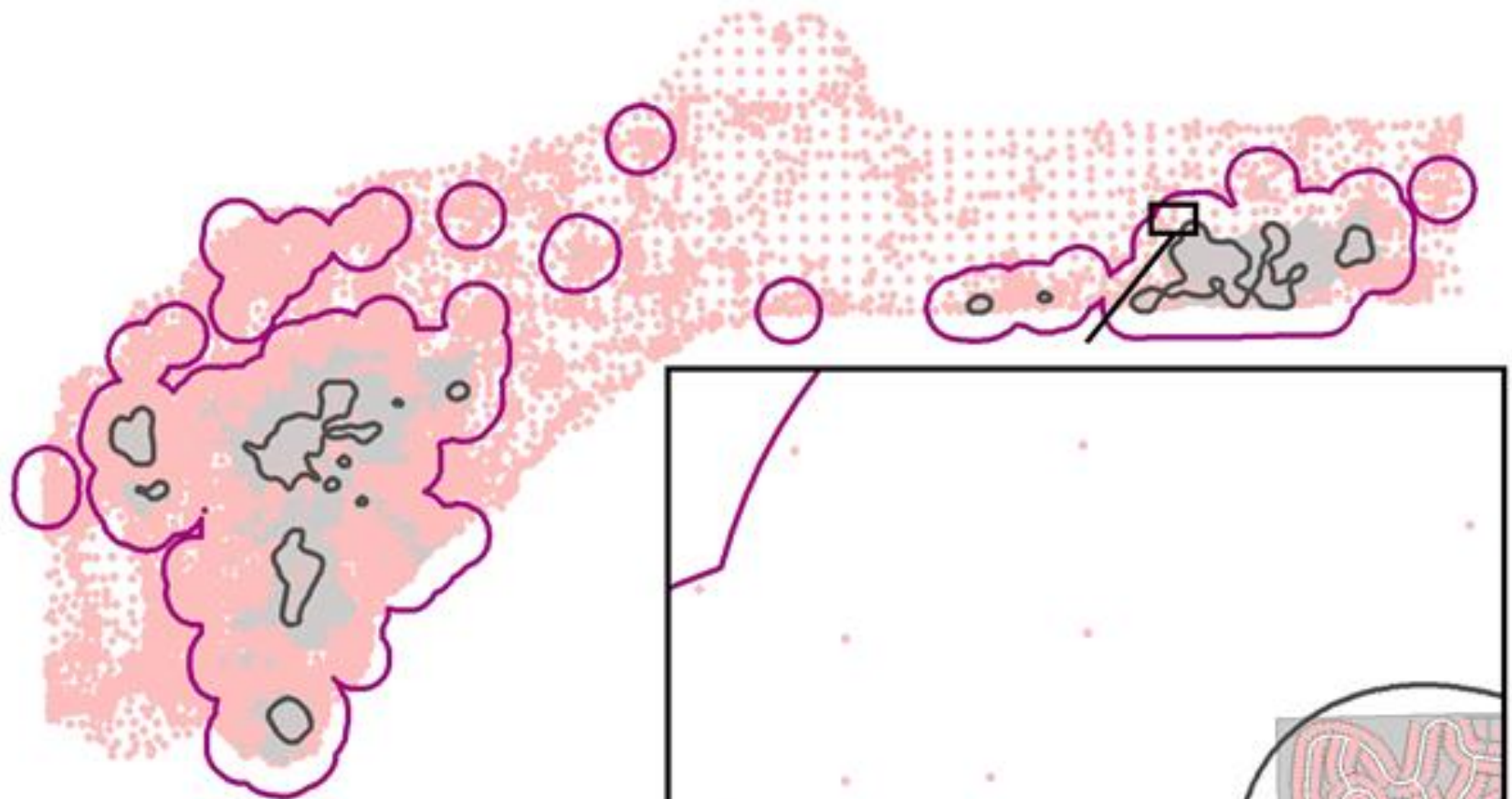


Weighted Fire Hazard

Figure 6: FlamMap (Version 3.0) Model's Spatially Explicit Inputs and Outputs



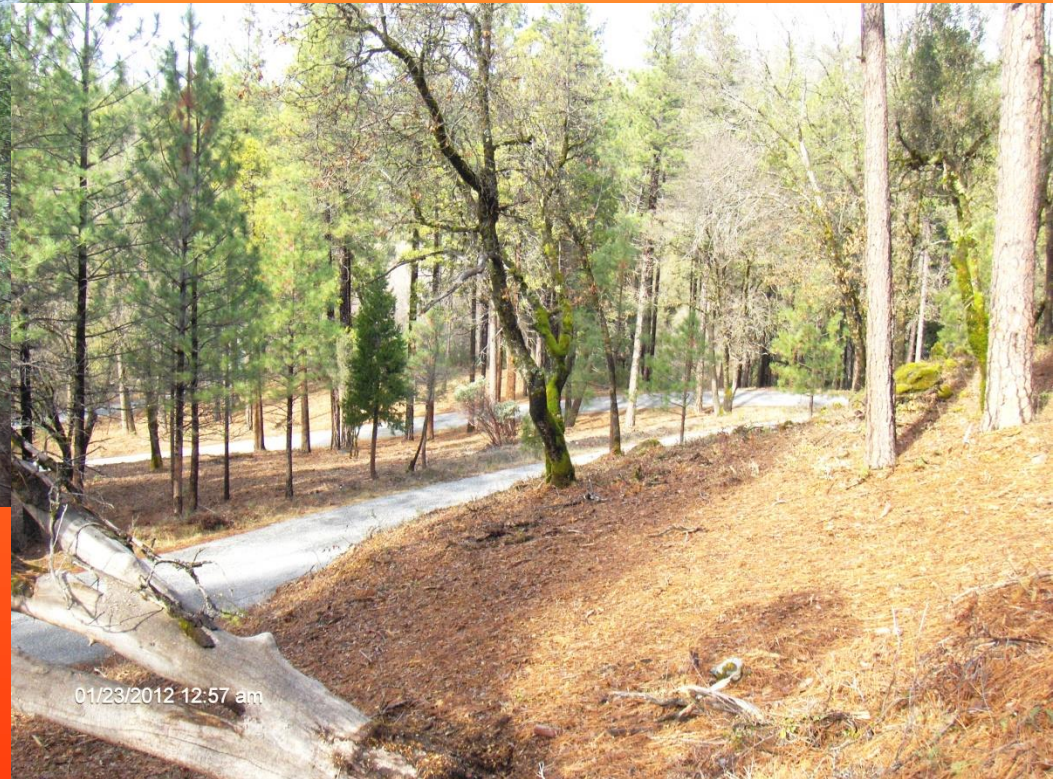
Wildland-Urban Interface / INTER-MIX



Legend

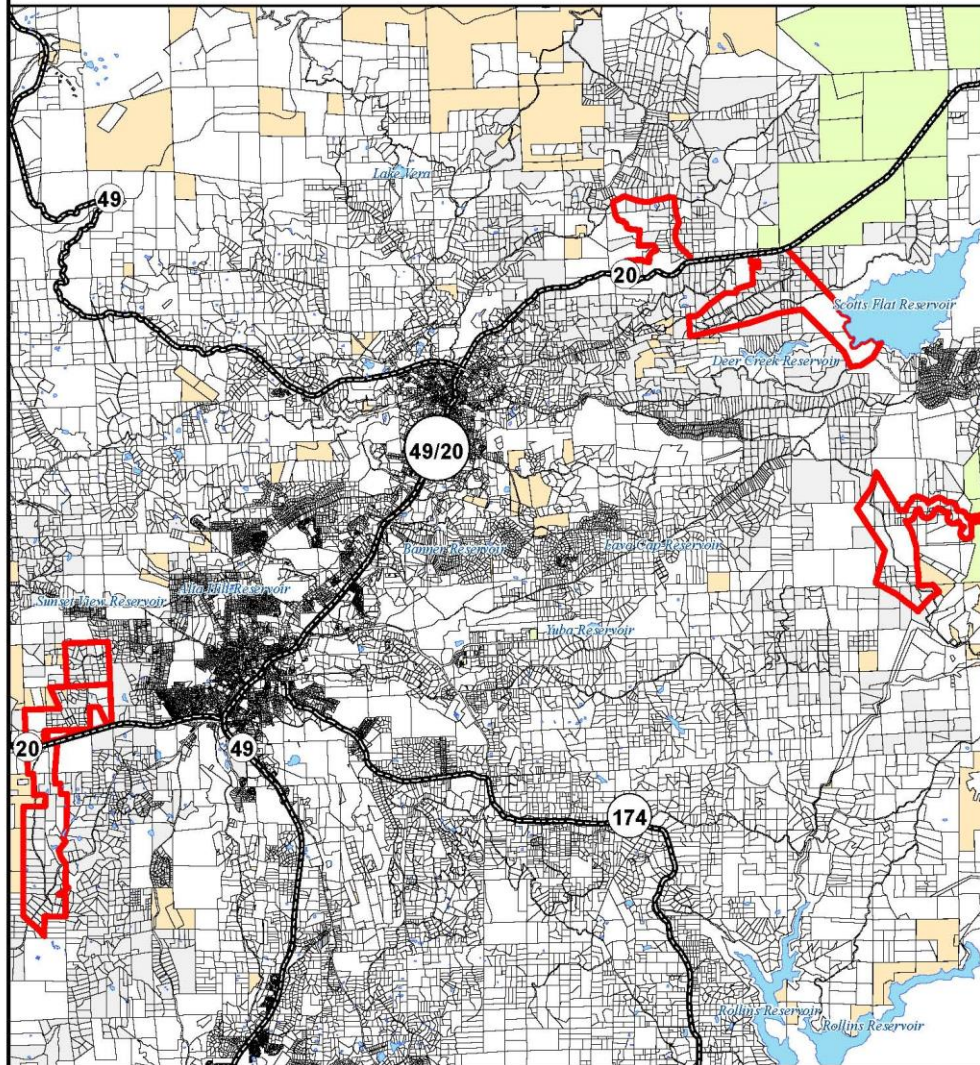
- WUI 1.5 Mile Buffer
- Parcel Urban Zone & 10k IMP
- Urban Density Analysis
- Parcel Centroid

History of CWPP & Funding



Implemented: Deer Creek Project; West I-80 Project; Alder Creek Project & Skislope Project from 2008-2013

Western Nevada County CWPP Projects



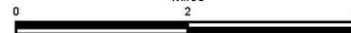
Legend

-  Project Areas
-  Parcels
-  Improved Parcels
-  BLM Lands
-  Tahoe NF Lands

40' Contour

Scale: 1:96,613

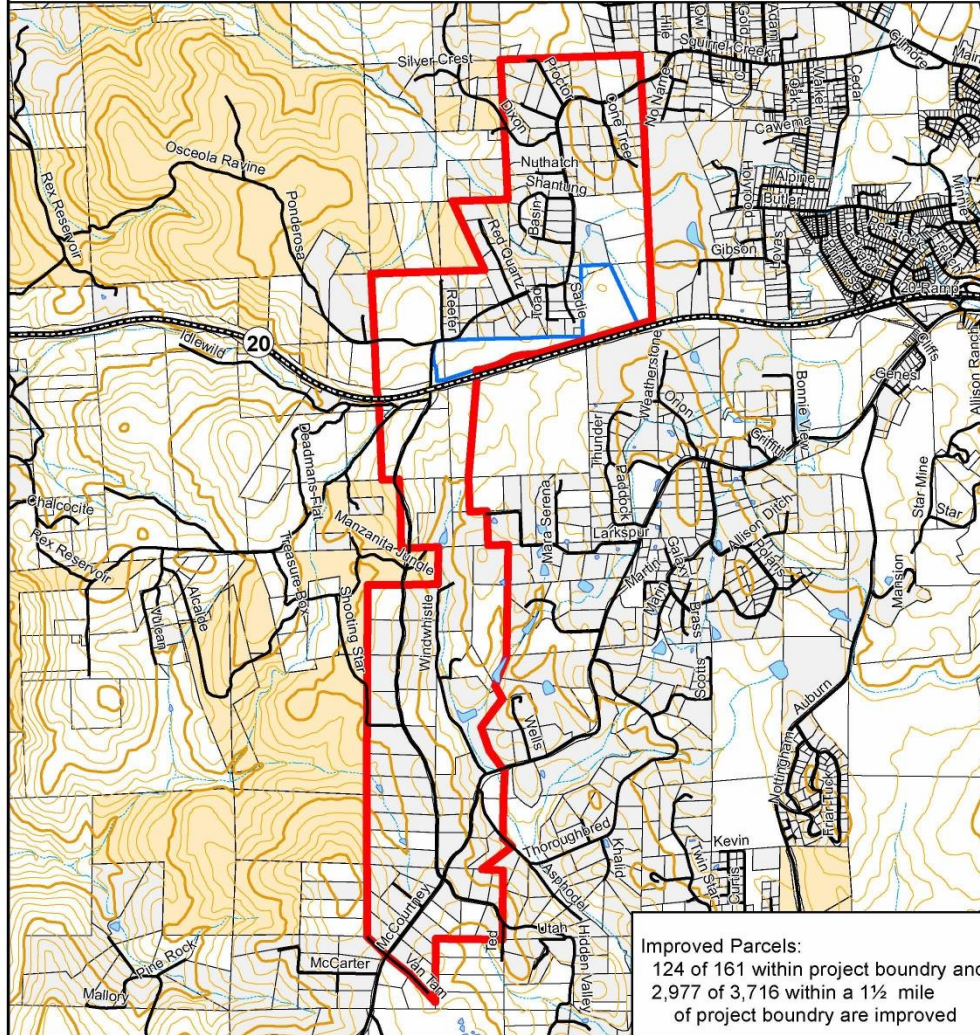
Miles



Fire Safe Council of Nevada County
CWPP Project
12/08/2015 LC

Ponderosa - West Grass Valley Defense Zone

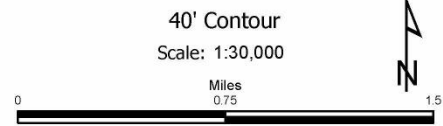
1,006 Total Acres



Improved Parcels:
 124 of 161 within project boundary and
 2,977 of 3,716 within a 1/2 mile
 of project boundary are improved

Legend

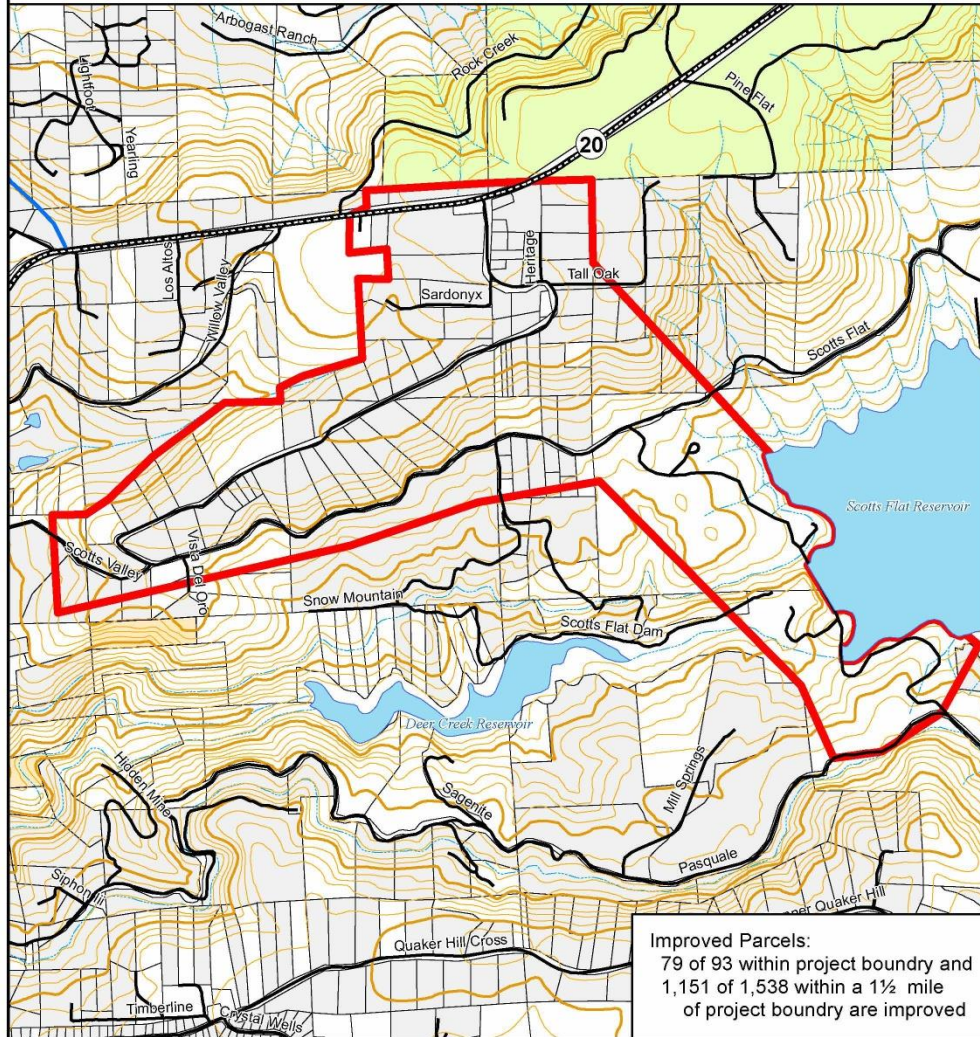
-  Project Area
-  Adjacent Project Areas
-  Streams
-  Roads
-  Parcels
-  Improved Parcels
-  BLM Lands
-  Tahoe NF Lands



Fire Safe Council of Nevada County
 CWPP Project
 04/27/2016 LC

Scott's Flat/Cascade Shores Ingress/Egress Improvement

651 Total Acres



Improved Parcels:
 79 of 93 within project boundary and
 1,151 of 1,538 within a 1½ mile
 of project boundary are improved

Legend

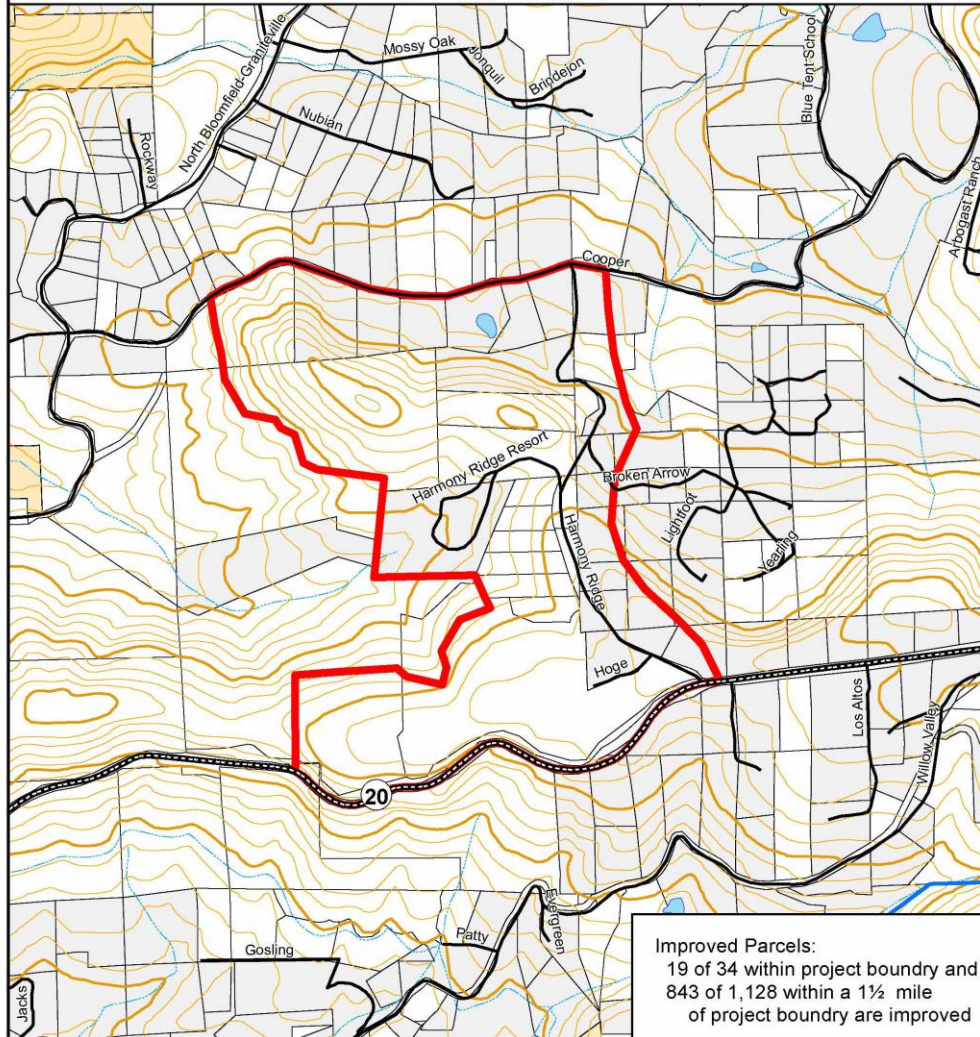
-  Project Area
-  Adjacent Project Areas
-  Streams
-  Roads
-  Parcels
-  Improved Parcels
-  BLM Lands
-  Tahoe NF Lands



Fire Safe Council of Nevada County
 CWPP Project
 04/27/2016 LC

North Bloomfield/Harmony Ridge Ingress/Egress Improvement

322 Total Acres



Improved Parcels:
19 of 34 within project boundary and
843 of 1,128 within a 1/2 mile
of project boundary are improved

Legend

- Project Area
- Adjacent Project Areas
- Streams
- Roads
- Parcels
- Improved Parcels
- BLM Lands
- Tahoe NF Lands

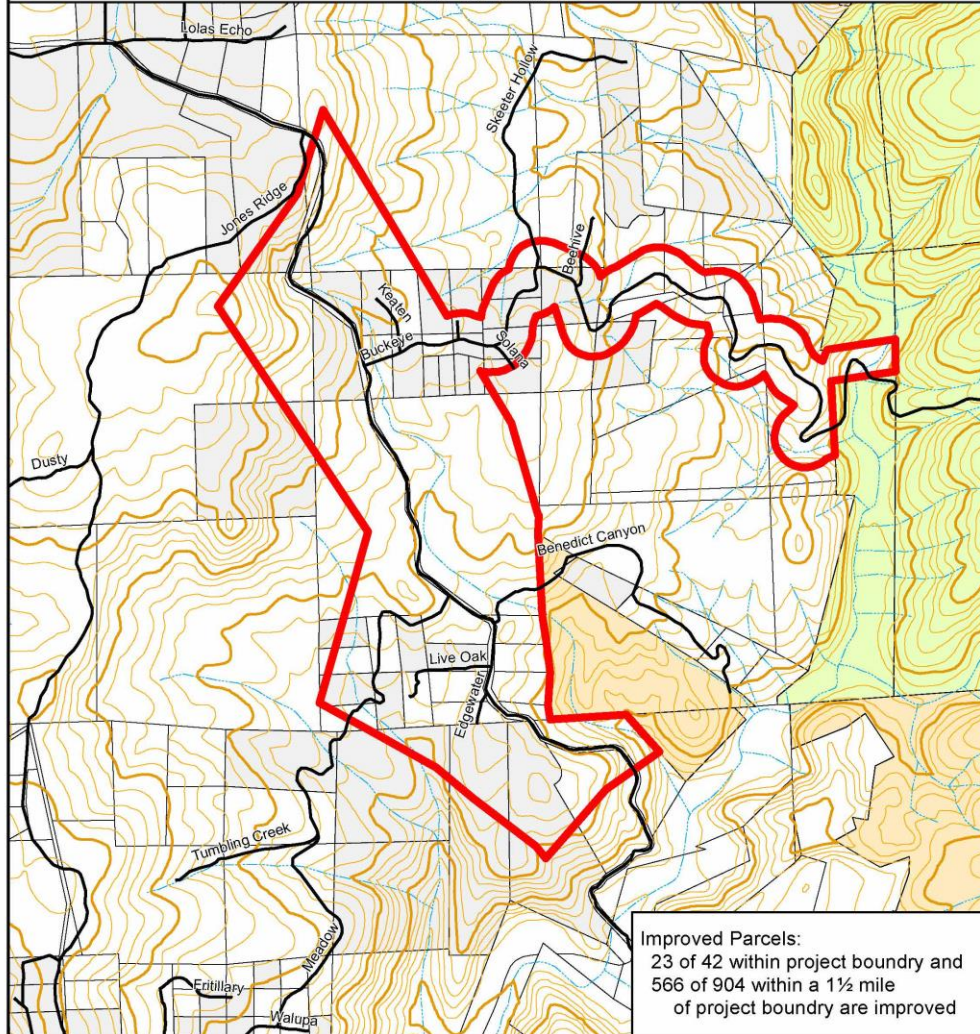
40' Contour
Scale: 1:15,000

Miles
0 0.35 0.7

Fire Safe Council of Nevada County
CWPP Project
04/27/2016 LC

Red Dog/Buckeye Ingress/Egress Improvement

480 Total Acres

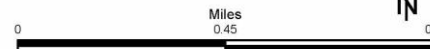


Legend

- Project Area
- Adjacent Project Areas
- Streams
- Roads
- Parcels
- Improved Parcels
- BLM Lands
- Tahoe NF Lands

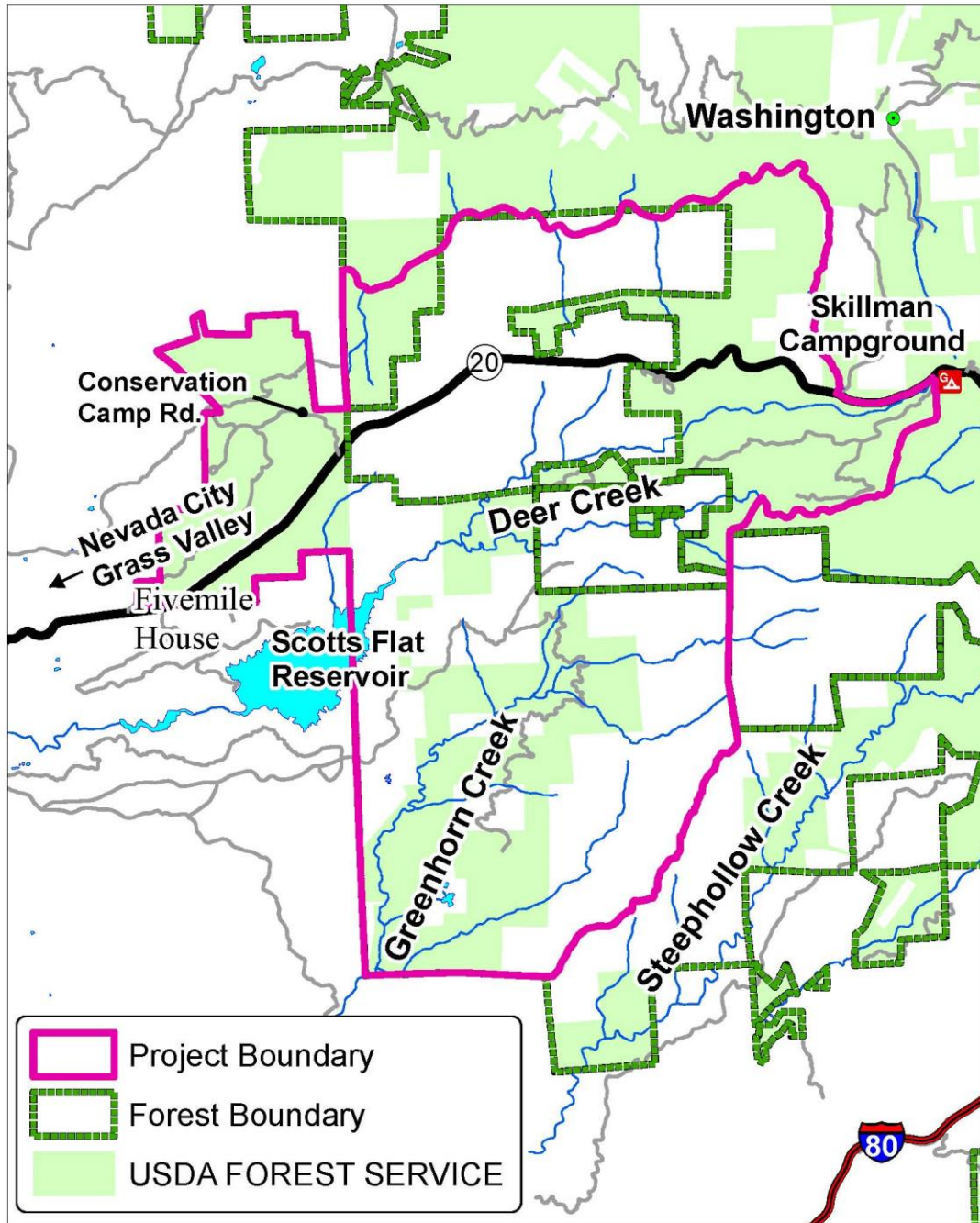
40' Contour

Scale: 1:18,000



Fire Safe Council of Nevada County
CWPP Project
04/27/2016 LC

Western Nevada County Community Defense Project



Types of Treatment / Scale



Desired Condition

Madrone Springs - AFTER



Madrone Springs - BEFORE



ANGORA FIRE 2007

Avoid this →



Area of Transect 1: no treatment

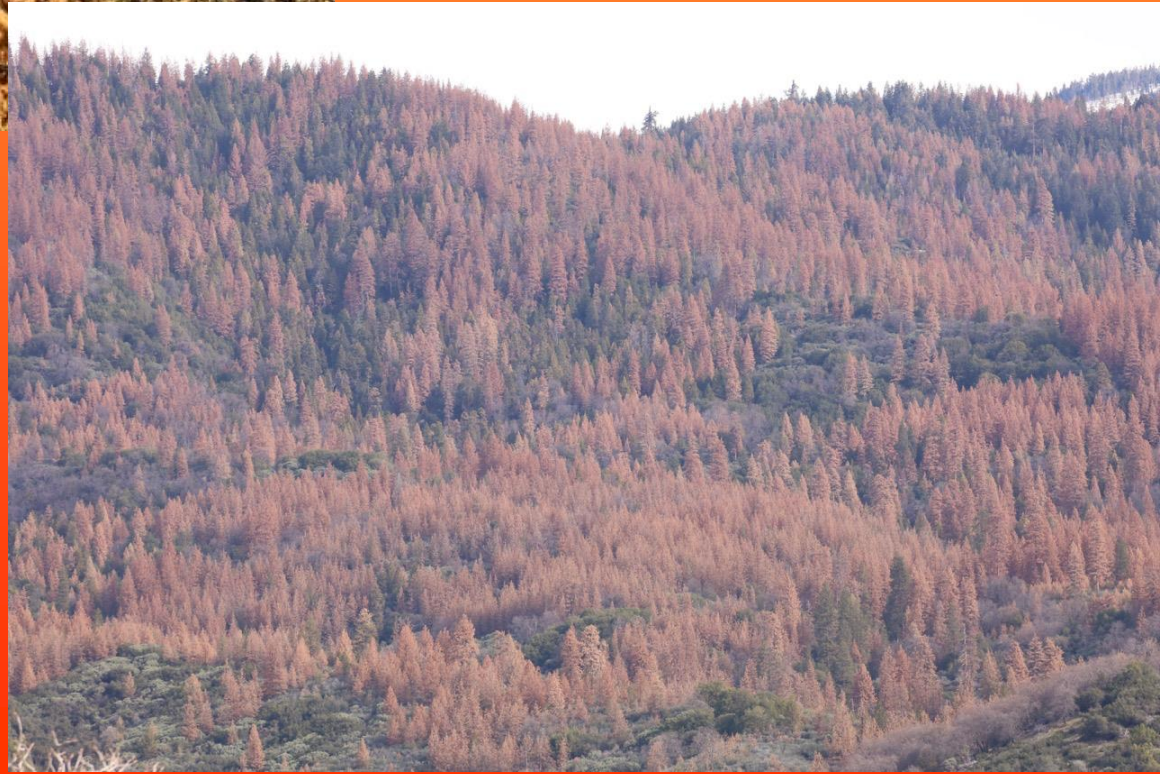
Manage fuels
for this →



Area of Transect 2: treated for fuels 1996-2005



**Education on active
vegetation and forest
management objectives
helps to keep forests healthy.**





Fire Safe Council is here to help YOU!

- Defensible Space Advisory Visit
- Emergency Preparedness
- Drive by Chipping Service
- Special Needs Assistance Program
- Weed Wrench Loans
- Firewise Communities
- Community Defense Projects



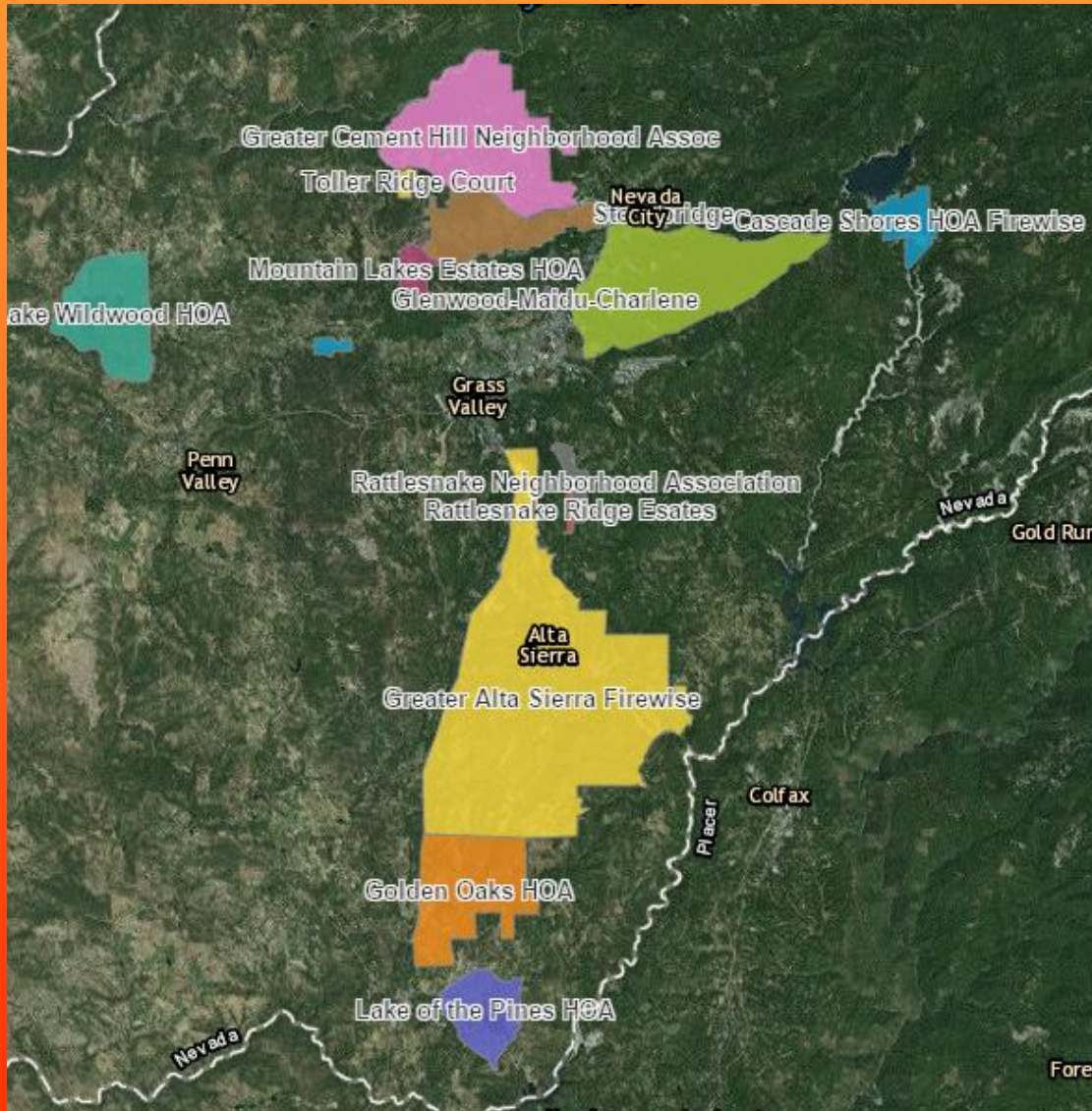
Taking Responsibility = Firewise Success



**There are 17 Firewise Communities
in Nevada County covering over**



Firewise is spreading like a Rx burn!



There is a total of 40,207 acres in NFPA certified Firewise Communities in Nevada County!

4 more are in process and 11 are on a waiting list.

Nevada County has more Firewise Communities than any other county in California!





Thanks to Core Team!

Gretchen Bennitt, NSAQMD

Jeff Bodde, Caltrans

Bill Boyl, Homeowner

Mike Cherry, Tahoe National Forest

Chip Close, Nevada Irrigation District

Tina Costella, Botanist

Vic Ferrera, Nevada County OES

Brian Foss, Nev. Co. Planning Director

Sean Griffis, Cal Fire

Bill Houdyschell, RPF/Tahoe-Donner HOA

Jason Jackson, NRCS

Warren Knox, FSCNC

Jerry Martinez, BLM

Brian Mulhollen, BLM

Rob Paulus, FSCNC

Christopher Ruff, Tahoe National Forest

Eric Sweet, Sierra Pacific Industries

Donn Thane, Tahoe National Forest

Don Wagner, Nev. Co. Fire Chief's Assoc

Hank Weston, Nevada County Supervisor



For More Information

Fire Safe Council of Nevada County
139 East Main Street, Grass Valley
PO Box 1112, Grass Valley, CA 95945
(530) 272-1122 • Fax (530) 272-3232

www.areyoufiresafe.com
info@areyoufiresafe.com