

Pacific Gas and Electric Company

Nevada County Board of Supervisors

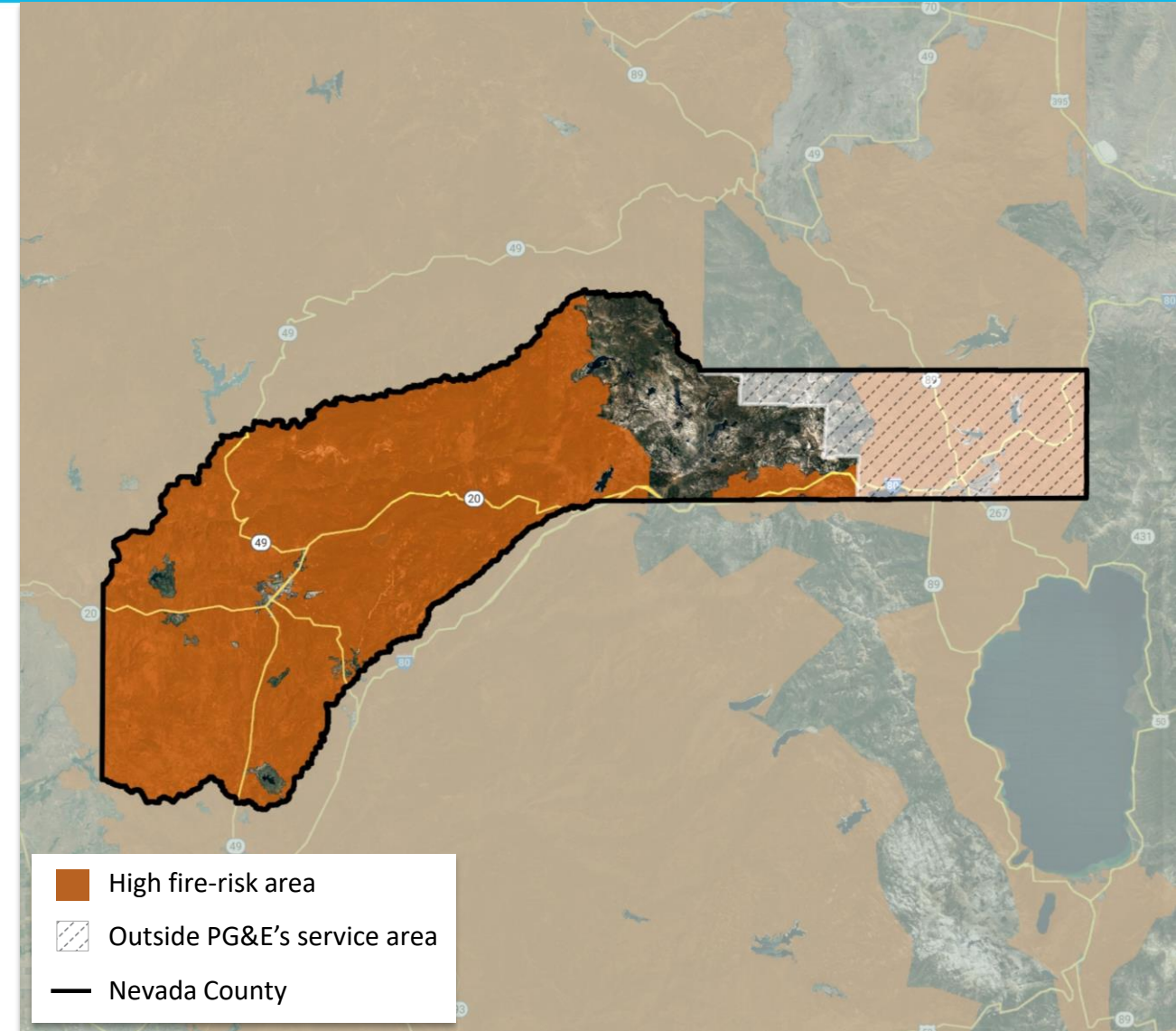
August 8, 2023



Identifying and Reducing Wildfire Risk



PG&E's high fire-risk area map helps us target wildfire mitigation efforts in the areas and communities at highest risk.



Key Wildfire Safety Objectives This Year

Prevent Wildfires



Reduce Impacts to Communities



Enhance Customer Support

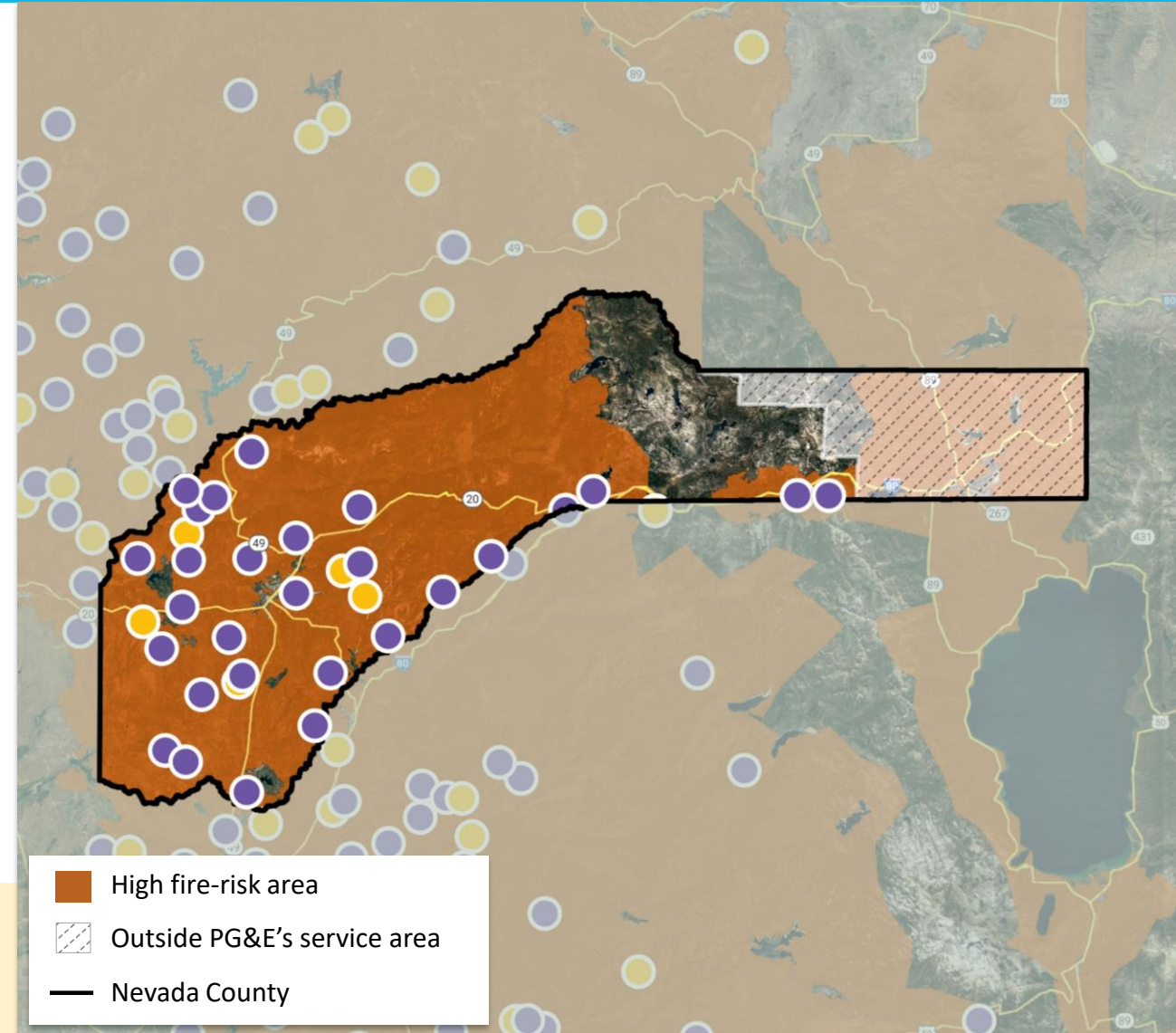


Situational Awareness in Nevada County

To better predict and respond to wildfire risk and severe weather around the clock, we built the largest utility-owned weather monitoring network in the country.

- Weather stations installed through 2022 | **29**
- High-definition cameras installed through 2022 | **8**

i Customers can view our interactive weather map at pge.com/weather



Data as of 6/30/2023. Locations are approximate and may overlap.

Overhead System Hardening



Hardening California's Next Generation Electric Grid

PG&E is strengthening its electric system by hardening powerlines. This includes replacing overhead lines and equipment with stronger and more resilient materials.

Our overhead hardening includes installing:

- Stronger poles
- Larger crossarms
- Covered powerlines

Overhead hardening benefits include:

- Mitigating the risk of wildfires
- Enhancing long-term safety
- Improving reliability

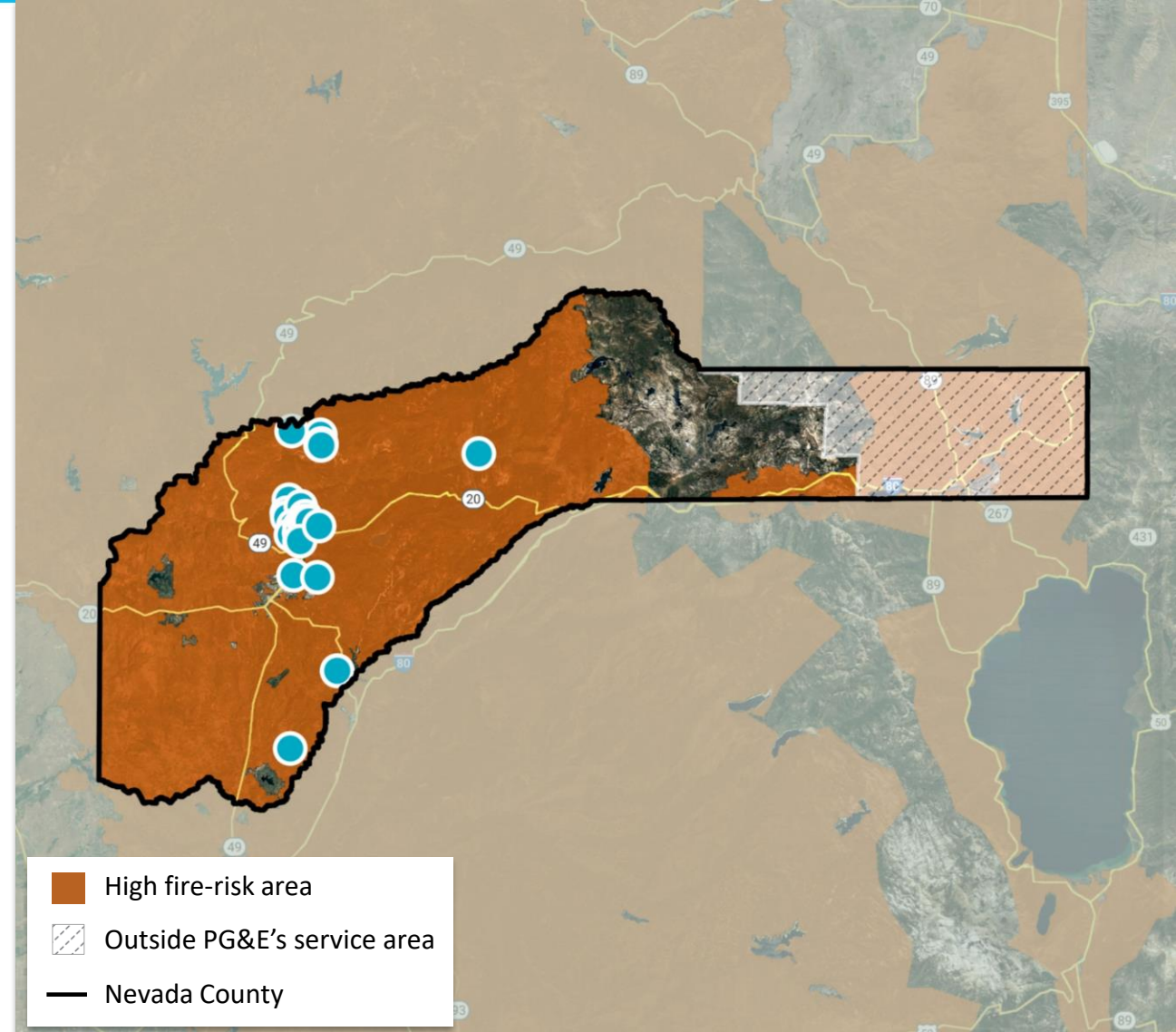




Overhead System Hardening in Nevada County

● Miles completed through 2022 | 53

i Customers can learn more at pge.com/systemhardening



Data as of 03/27/2023. Locations are approximate and may overlap. Work plans are subject to change due to weather, access and permitting. Annual mileage forecasts exceed annual targets.

Vegetation Management



Keeping Trees Away From Powerlines

When trees are too close to powerlines, they can cause outages and serious safety issues. That's why each year we:

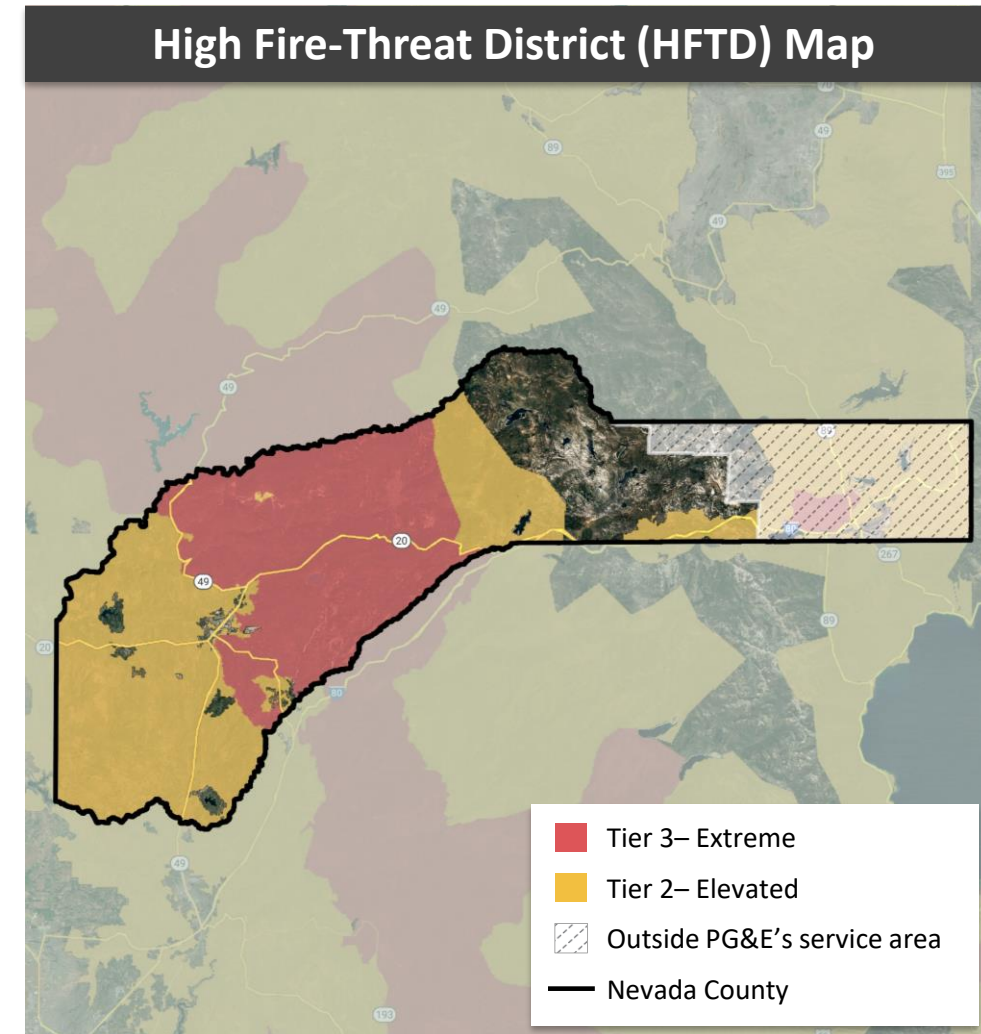
- ✓ Inspect ~100,000 miles of overhead powerlines
- ✓ Prune or cut down more than 1 million trees that are an unsafe distance from the line
- ✓ Address dead, dying or hazard trees
- ✓ Conduct additional trimming around lines that have had a lot of vegetation-caused outages



Tree Work in Your Community

	Non-High Fire-Threat Districts	High Fire-Threat Districts
Work	Year-round vegetation work to meet state standards	Year-round work <i>plus</i> additional inspections, tree-trimming/removals and clearance
Safety Clearance	Minimum of 1.5-feet around the line	Minimum of 4-feet around the line
Powerline Miles	209	1,674

Data is approximate.



The California Public Utilities Commission's (CPUC) High Fire-Threat District (HFTD) map designates areas most at risk for wildfire.

Customers can expect the following when vegetation management work is being conducted in their communities:

- ① **Advance notifications** before inspections or tree work begins on your property
- ② **Inspections** to identify potential safety concerns
- ③ **Tree work** following the inspection to complete any necessary safety work
- ④ **Safety and quality checks** through follow-up inspections to ensure work meets the required safety standards



Enhanced Powerline Safety Settings

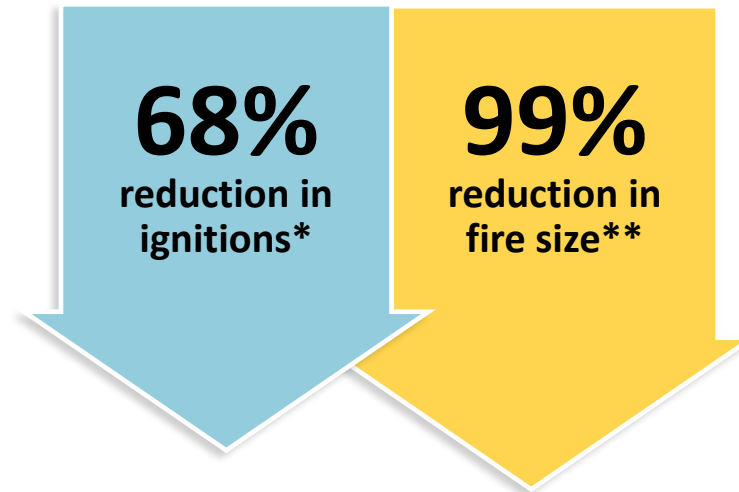


How It Works

Turning off power within one-tenth of a second if a tree branch or other object strikes the line.

Why We Do It

Stopping wildfires before they have a chance to start.

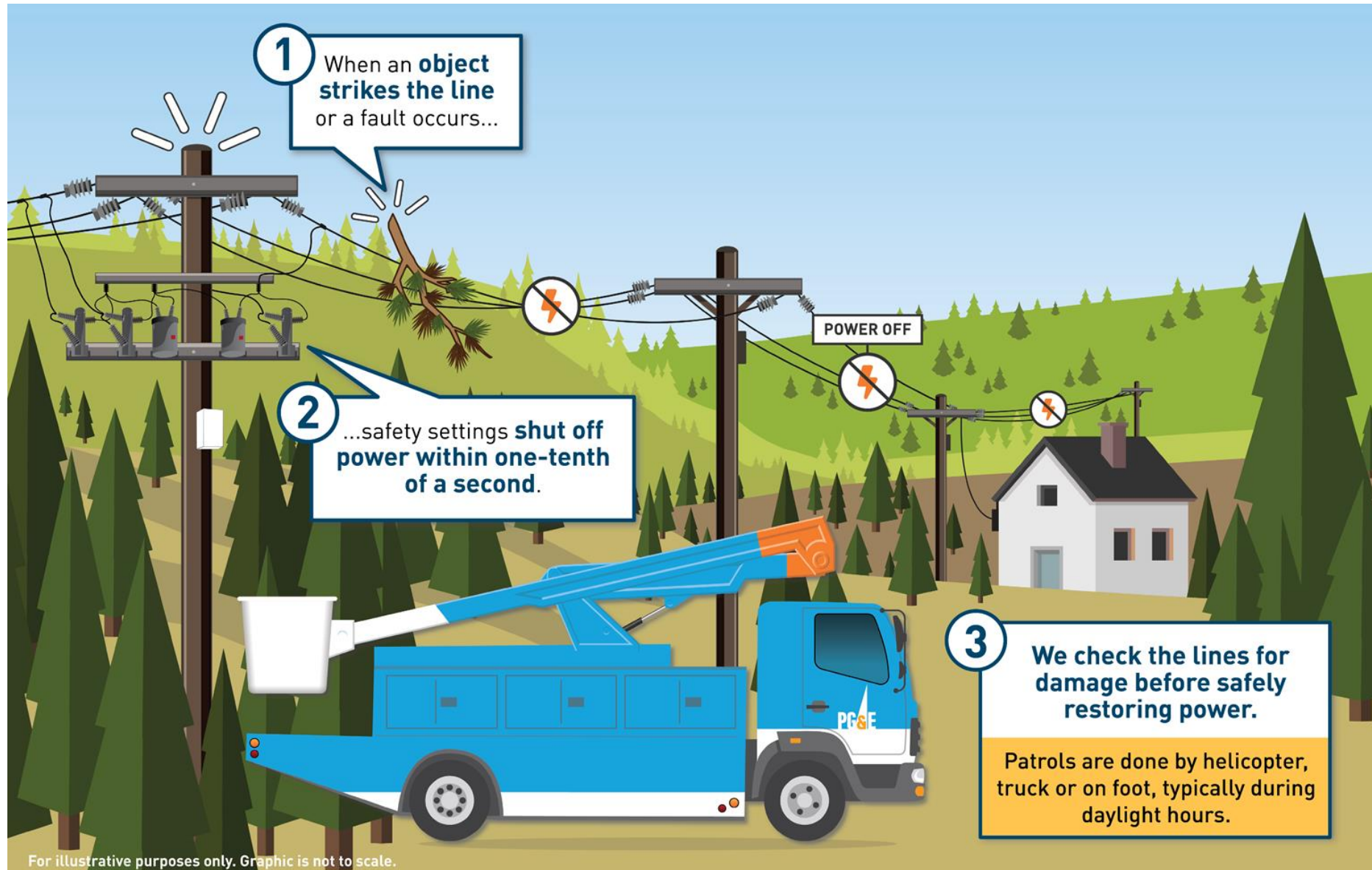


*Data is approximate; *Based on 2022 performance for CPUC-reportable ignitions in HFTD compared to 2018-2020 weather-normalized performance; **Relative to the 2018-2020 average*



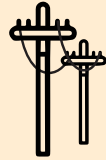
SAFETY SETTINGS IN ACTION IN NAPA COUNTY

Safety Settings, Step-By-Step



Protecting Customers in Nevada County

100%



of powerlines in high fire-risk areas are protected by EPSS

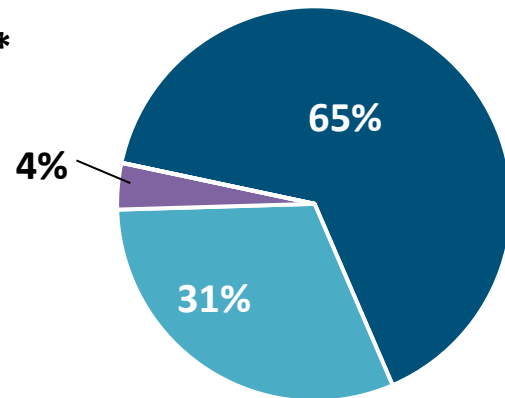
Improving reliability and minimizing customer impacts

	2021	2023	Improvements
Avg. outage length	20 hrs	16 hrs	20% decrease
Avg. customers impacted per outage	439	203	54% decrease

Performance on EPSS Protected Powerlines

Customers Experiencing*
(in 2023)

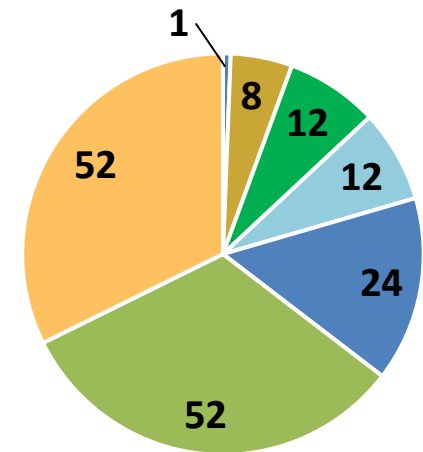
- 0 Outages
- 1-2 Outages
- 3-7 Outages



* Customer counts are approximate as of 7/24/2023 and may change based on ongoing program updates and enhancements.

Common Outage Causes
(from 2021-2023)

- Environmental
- Company Initiated
- Third party
- Equipment Failure
- Vegetation
- Animal
- Unknown



Data is approximate and as of 7/24/2023

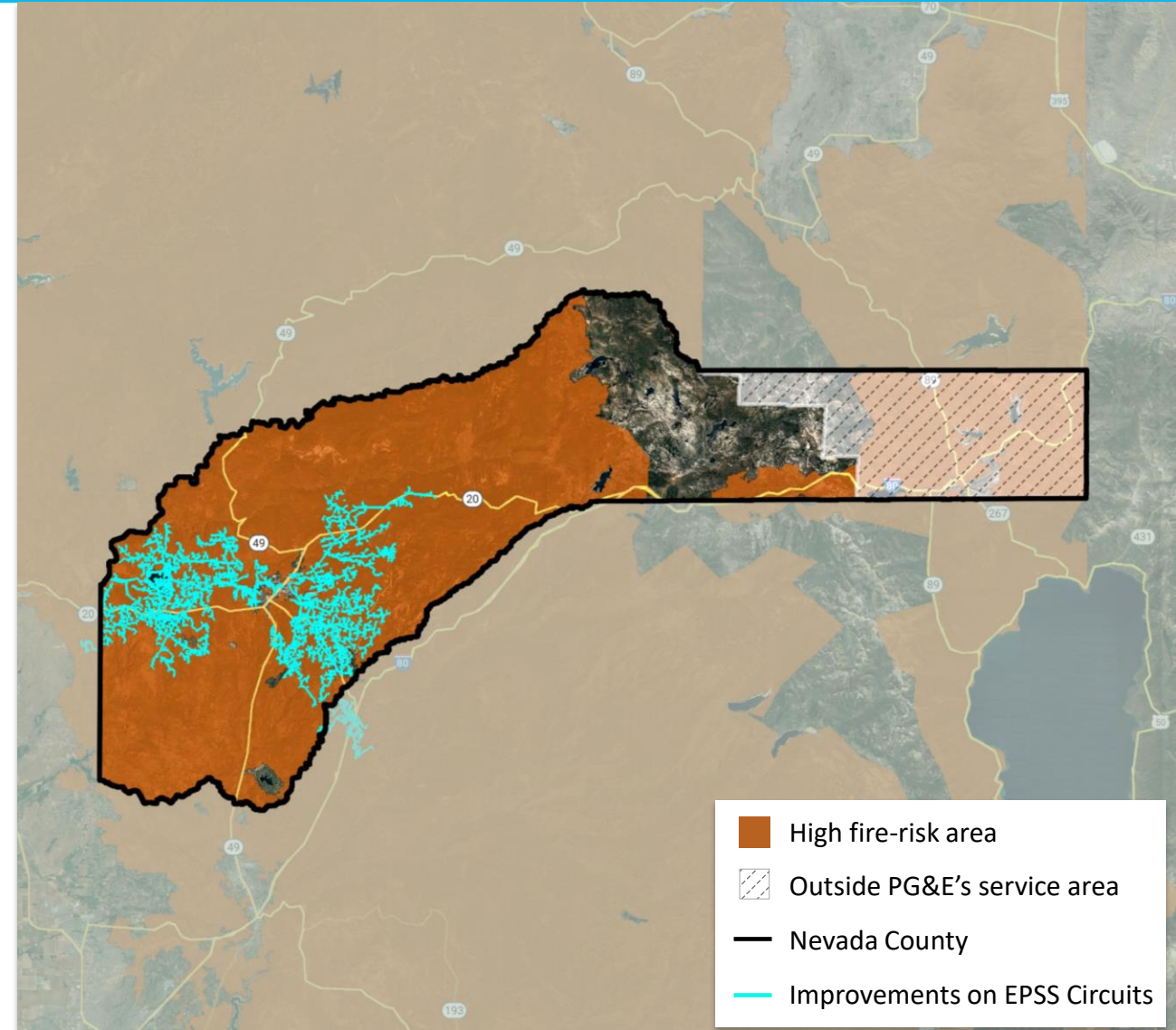
Improving Reliability in Nevada County

We have taken steps to improve reliability on circuits protected by EPSS in Nevada County.

This work is ongoing and includes:

- ✓ Trimming trees to reduce future vegetation-caused outages
- ✓ Installing fault indicators to precisely identify outage locations and speed up restoration
- ✓ Installing animal guards to prevent future animal-caused outages

i Customers can learn more at pge.com/epss



Data as of 06/24/2023. Locations are approximate and may overlap. Work plans are subject to change.

Public Safety Power Shutoffs



What is a Public Safety Power Shutoff?

High winds can cause tree branches and debris to contact energized electric lines, damage our equipment and cause a wildfire.

To prevent wildfires, we may need to turn off power as a last resort.



What Conditions Could Lead to a PSPS?



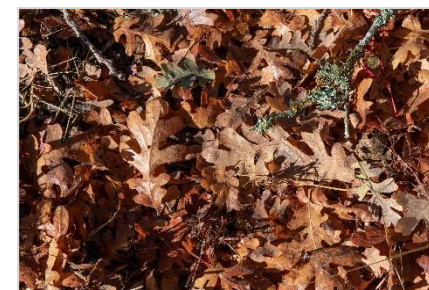
Low humidity levels of 30% and below



Forecasted high winds above 19 mph and gusts above 30-40 mph



A Red Flag Warning issued by the National Weather Service



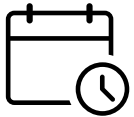
Condition of dry material on the ground and low moisture content of vegetation



On-the-ground, real-time observations

Enhanced Powerline Safety Settings

Turning off power automatically within one-tenth of a second if a problem is detected on the line



WHEN

Elevated wildfire risk is present, most likely from May to November, but can occur year-round



NOTIFICATIONS

Regular updates after the outage occurs; advance notice cannot be provided due to the adjusted settings that allow power to automatically shut off

Public Safety Power Shutoffs (PSPS)

Turning off power to prevent tree branches and debris from contacting energized lines



WHEN

During times of high winds, low humidity and dry vegetation



NOTIFICATIONS

In advance through automated calls, texts, and emails with updates provided daily until power is restored

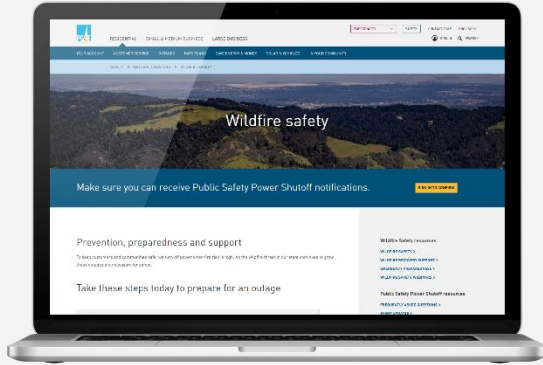
i Find updates and information for both planned and unplanned outages at [pge.com/outages](https://www.pge.com/outages)

Customer Resources





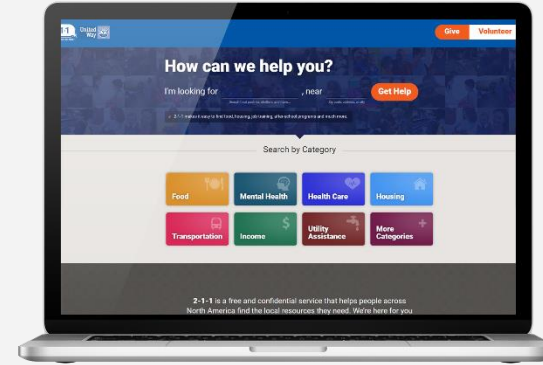
Customer Resources



Wildfire Safety


Information on wildfire prevention efforts

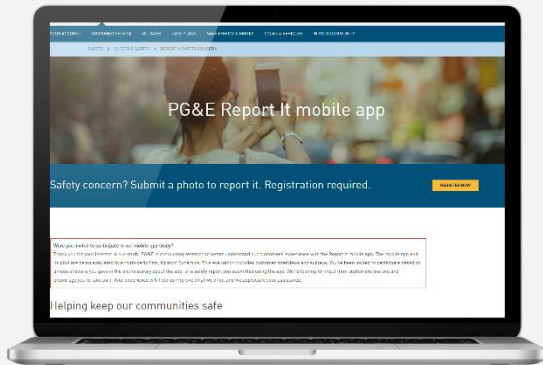
 pge.com/wildfiresafety



211

24-7 free and confidential support and resources via calls or texts to 211

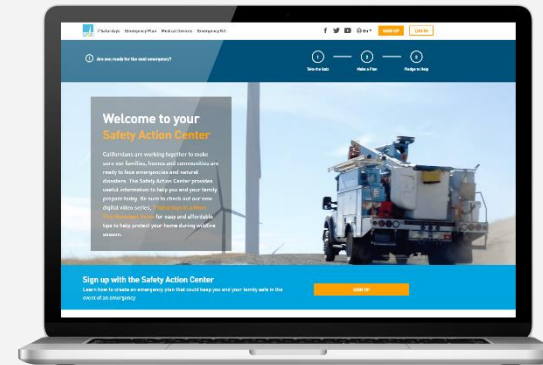
 211ca.org



Report It App

Submit photos of non-emergency potential safety concerns

 pge.com/reportit



Safety Action Center

Create an emergency safety plan to keep you and your family safe

 safetyactioncenter.pge.com

Dedicated wildfire safety contacts: Hotline: 1-866-743-6589 | Email: wildfiresafety@pge.com

Some of the measures included in this presentation are contemplated as additional precautionary measures intended to further reduce the risk of wildfires.

Open Discussion



Thank You

