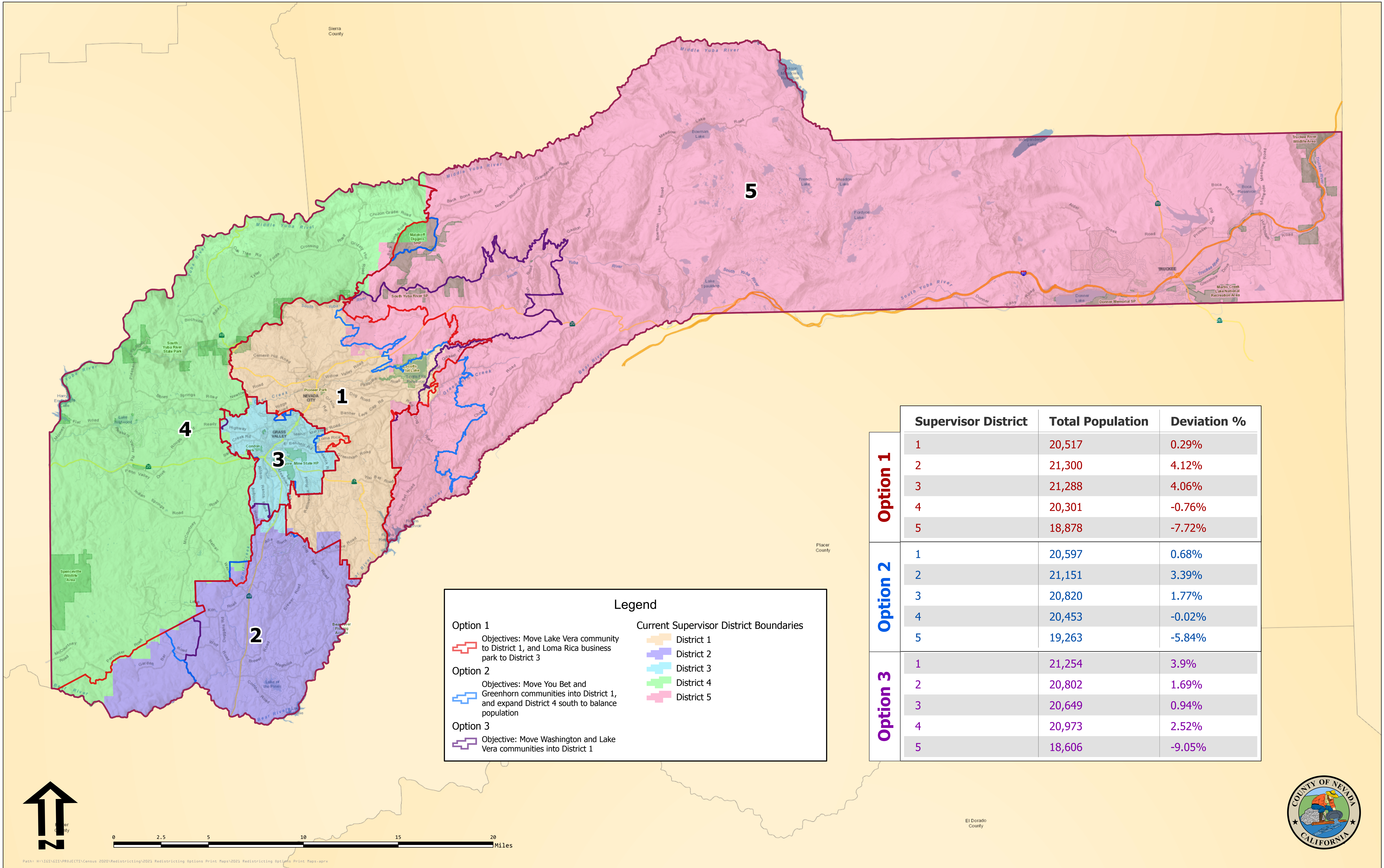


Nevada County, CA: 2021 Redistricting Options



Legend

Option 1
 Objectives: Move Lake Vera community to District 1, and Loma Rica business park to District 3

Option 2
 Objectives: Move You Bet and Greenhorn communities into District 1, and expand District 4 south to balance population

Option 3
 Objective: Move Washington and Lake Vera communities into District 1

Current Supervisor District Boundaries

- District 1
- District 2
- District 3
- District 4
- District 5

| | Supervisor District | Total Population | Deviation % |
|-----------------|---------------------|------------------|-------------|
| Option 1 | 1 | 20,517 | 0.29% |
| | 2 | 21,300 | 4.12% |
| | 3 | 21,288 | 4.06% |
| | 4 | 20,301 | -0.76% |
| | 5 | 18,878 | -7.72% |
| Option 2 | 1 | 20,597 | 0.68% |
| | 2 | 21,151 | 3.39% |
| | 3 | 20,820 | 1.77% |
| | 4 | 20,453 | -0.02% |
| | 5 | 19,263 | -5.84% |
| Option 3 | 1 | 21,254 | 3.9% |
| | 2 | 20,802 | 1.69% |
| | 3 | 20,649 | 0.94% |
| | 4 | 20,973 | 2.52% |
| | 5 | 18,606 | -9.05% |

