

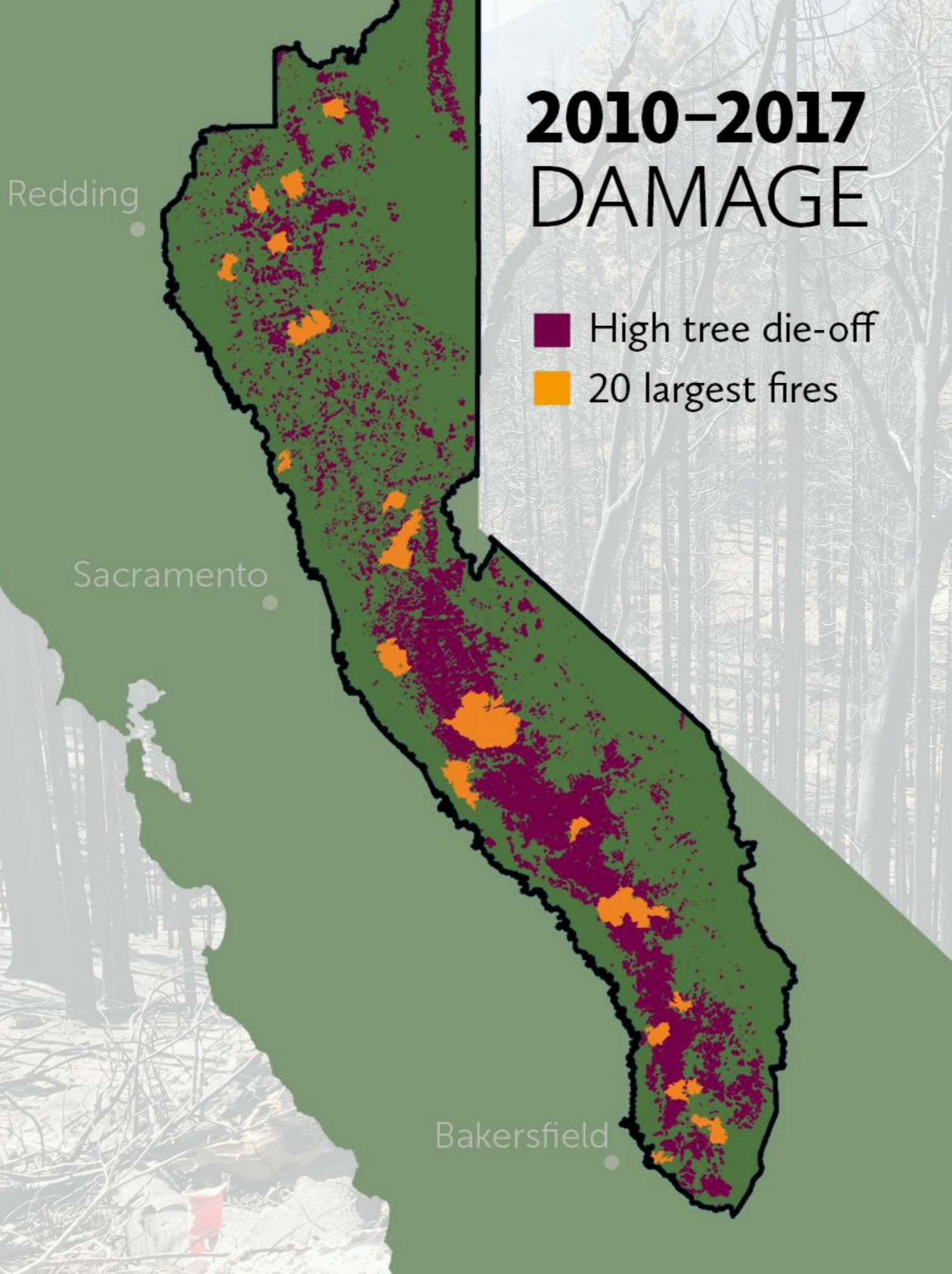


# TAHOE-CENTRAL SIERRA INITIATIVE

**Jim Branham** | Executive Officer  
*Sierra Nevada Conservancy*

# 2010-2017 DAMAGE

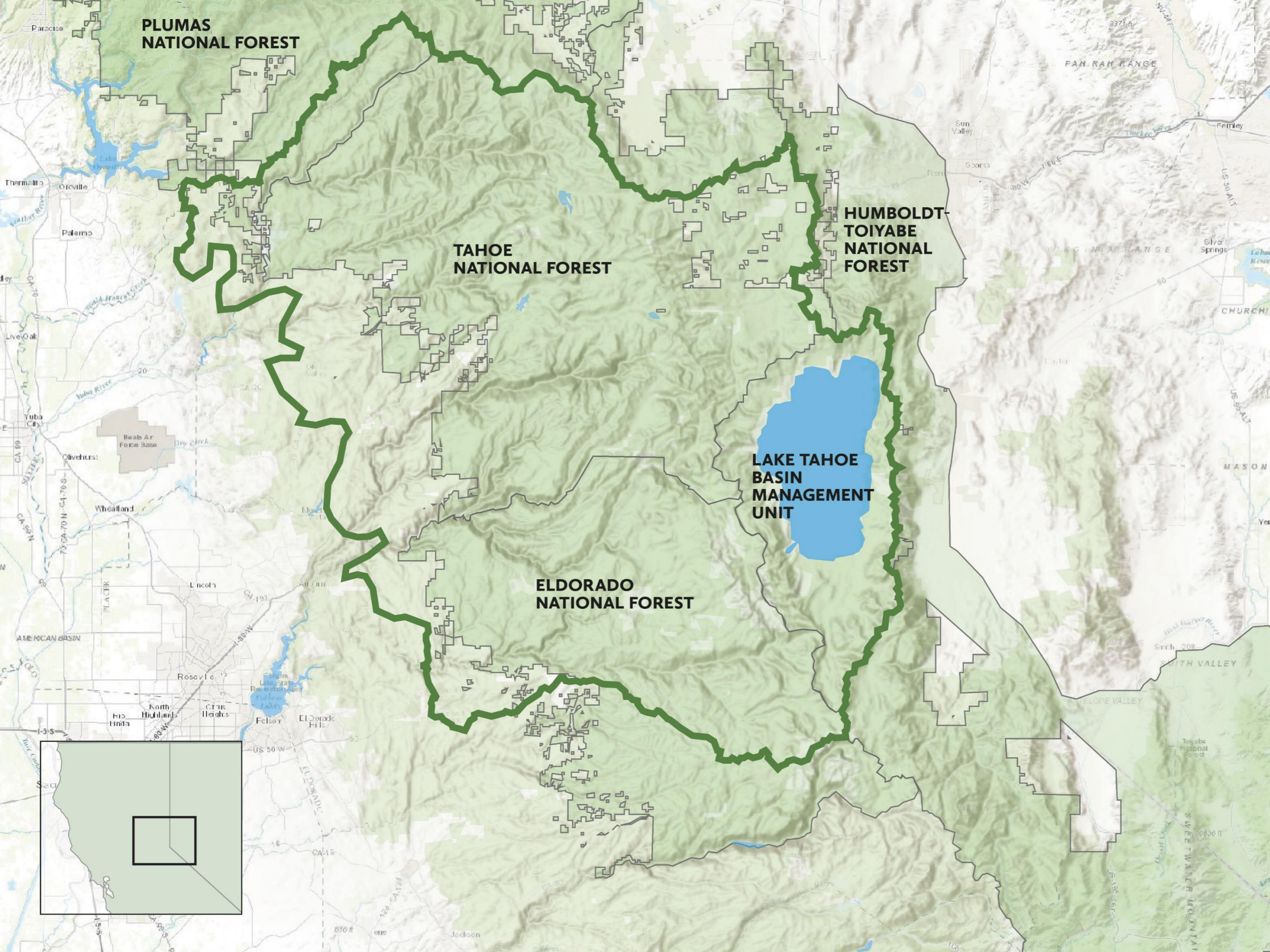
- High tree die-off
- 20 largest fires











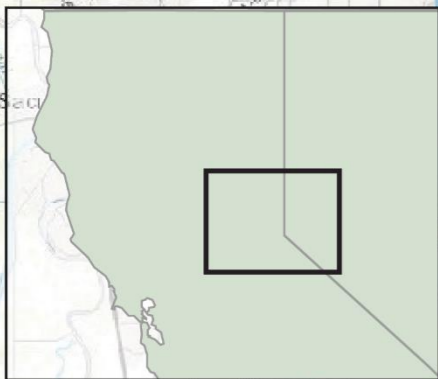
**PLUMAS NATIONAL FOREST**

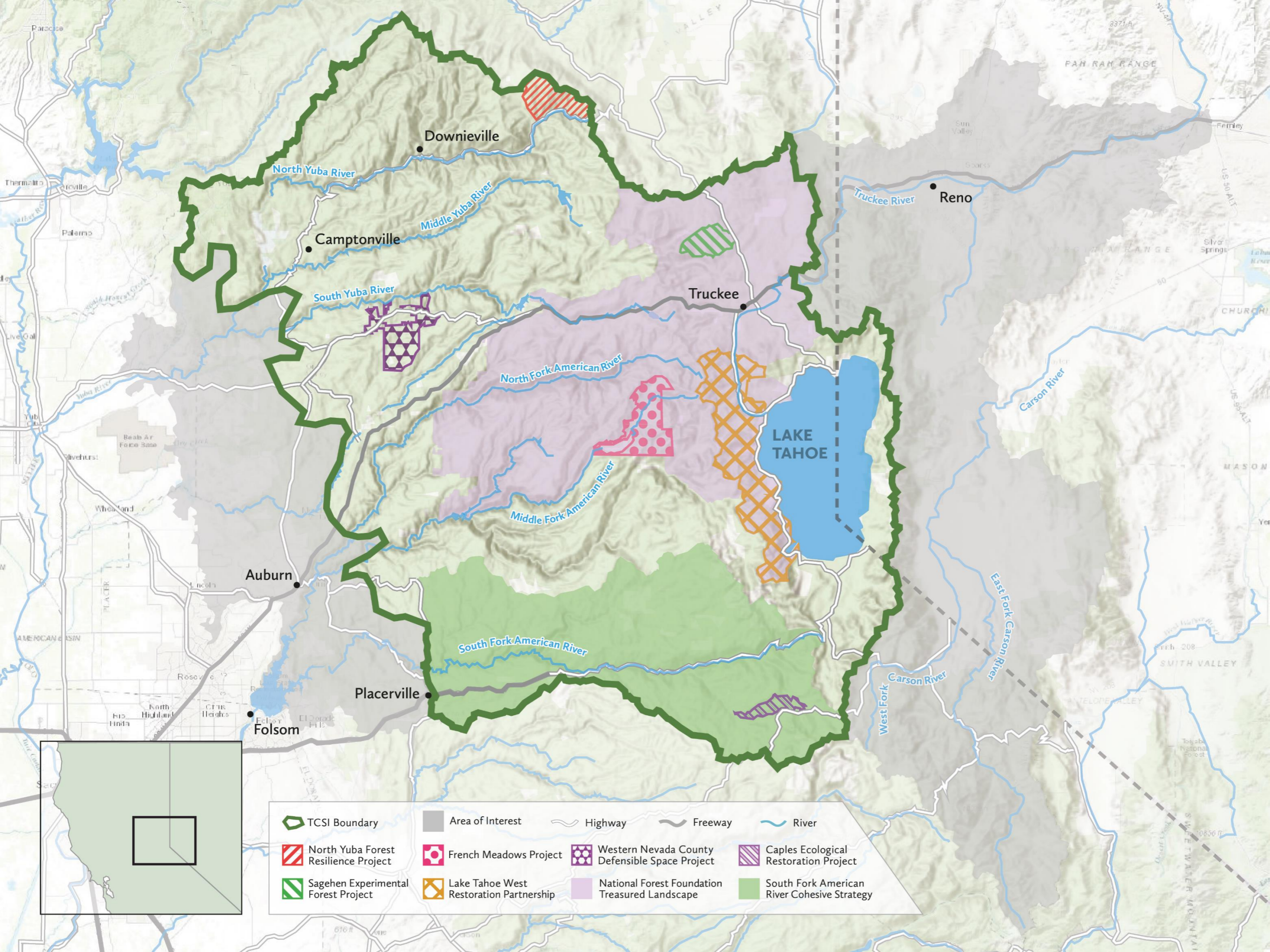
**TAHOE NATIONAL FOREST**

**HUMBOLDT-TOIYABE NATIONAL FOREST**

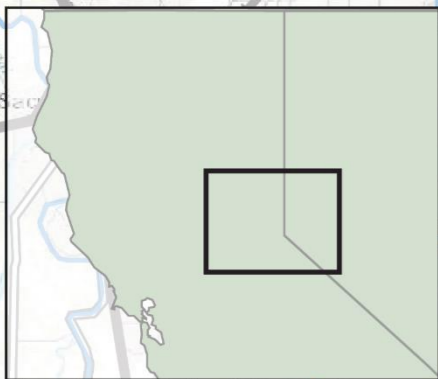
**LAKE TAHOE BASIN MANAGEMENT UNIT**

**ELDORADO NATIONAL FOREST**





- |                                      |   |  |   |       |
|--------------------------------------|---|--|---|-------|
| TCSI Boundary                        | Area of Interest                        | Highway  | Freeway                                     | River |
| North Yuba Forest Resilience Project | French Meadows Project                  | Western Nevada County Defensible Space Project | Caples Ecological Restoration Project       |       |
| Sagehen Experimental Forest Project  | Lake Tahoe West Restoration Partnership | National Forest Foundation Treasured Landscape | South Fork American River Cohesive Strategy |       |





French Meadows Project



Sagehen Experimental Forest Project



Caples Ecological Restoration Project







# TAHOE-CENTRAL SIERRA INITIATIVE & YOU!

[restorethesierra.org/tahoesierra](http://restorethesierra.org/tahoesierra)

**ANDY FRISTENSKY**

*Sierra Nevada Conservancy*

[andy.fristensky@sierranevada.ca.gov](mailto:andy.fristensky@sierranevada.ca.gov)

530-823-4691