



RESOLUTION NO. _____

OF THE BOARD OF SUPERVISORS OF THE COUNTY OF NEVADA

RESOLUTION AMENDING THE NEVADA COUNTY GENERAL PLAN LAND USE MAP DESIGNATIONS FOR SPECIFIC SITES TO INCREASE THE COUNTY'S URBAN HIGH DENSITY LAND USE DESIGNATION BY THE EQUIVALENT OF AT LEAST 43.7-ACRES, EFFECTIVELY IMPLEMENTING THE HOUSING ELEMENT REZONE PROGRAM IMPLEMENTATION PROJECT (NEVADA COUNTY 2014-2019 HOUSING ELEMENT PROGRAM HD-8.1.1); (GP12-002)

WHEREAS, on November 14, 1995, the County of Nevada adopted a General Plan for the County of Nevada, through Resolution 95-530; and

WHEREAS, the State of California Department of Housing and Community Development has required that the County include a Program (Program HD-8.1.1) within its 2014-2019 Housing Element update that makes the County responsible for redesignating enough lands to Urban High Density (UHD) to establish zoning for 699 high density housing units; and

WHEREAS, through the Environmental Impact Report process, the County has identified nine of seventeen candidate rezone sites that are considered to be the most suitable from an environmental and planning perspective to be redesignated for high density residential development; and

WHEREAS, seven of the nine sites that have been deemed most suitable for rezoning have been identified to need a General Plan Land Use designation change to ensure consistency with the proposed zoning designation of High Density Residential (R3); and

WHEREAS, this project is in connection with the subsequent rezoning of the nine sites to High Density Residential (R3) with the addition of the Regional Housing Need (RH) Combining District or just the additional of the RH Combining District for Site 11 to accommodate the State mandated Housing Element program; and

WHEREAS, the County, through RBF Consulting, prepared a site specific Draft Environmental Impact Report (EIR) and circulated it for review by responsible and trustee agencies, the public and submitted it to the State Clearinghouse (EIR12-002/SCH#2009072070) for review and comment by State agencies, for a comment period that ran from September 12, 2013 to November 12, 2013 (60-days). The Final EIR includes the Draft EIR, copies of all comments on the Draft EIR submitted during the comment period, the County's response to those comments, and changes made to the Draft EIR following its public circulation; and

WHEREAS, on October 9, 2014, the Planning Commission held a duly noticed public hearing on the proposed General Plan Land Use Map designation amendment (GP12-002) and site specific rezone (Z12-002) (collectively "Project") in which the Commission reviewed the proposed EIR together with all comments received during the public review period, and recommended certification of this same EIR before making a recommendation to the Board of Supervisors on the proposed Project; and

WHEREAS, after reviewing and considering the proposed Project, the Planning Commission recommended that the Board of Supervisors approve the proposed Resolution to amend the General Plan Land Use Map designations (GP12-002) as shown and described in Exhibit "A" attached hereto and made a part of this Resolution; and

WHEREAS, the Nevada County Board of Supervisors, held a duly noticed public hearing on the proposed amendment to the General Plan Land Use Map, re-designating those sites shown in Exhibit "A" consisting of the following Site and Assessor's Parcels Numbers (APNs): Site 3 APN 35-412-15, Site 5 APN 35-412-18, Site 12 APN 51-151-62, Site 14 APN 57-141-29; Site 16 APN 57-270-03, and Site 18 APN 11-181-03; and

WHEREAS, a separate Resolution of the Board of Supervisors certified the Project's EIR (EIR12-002) and a separate Ordinance of the Board of Supervisors adopted site specific rezoning associated with the Project (Z12-002); and

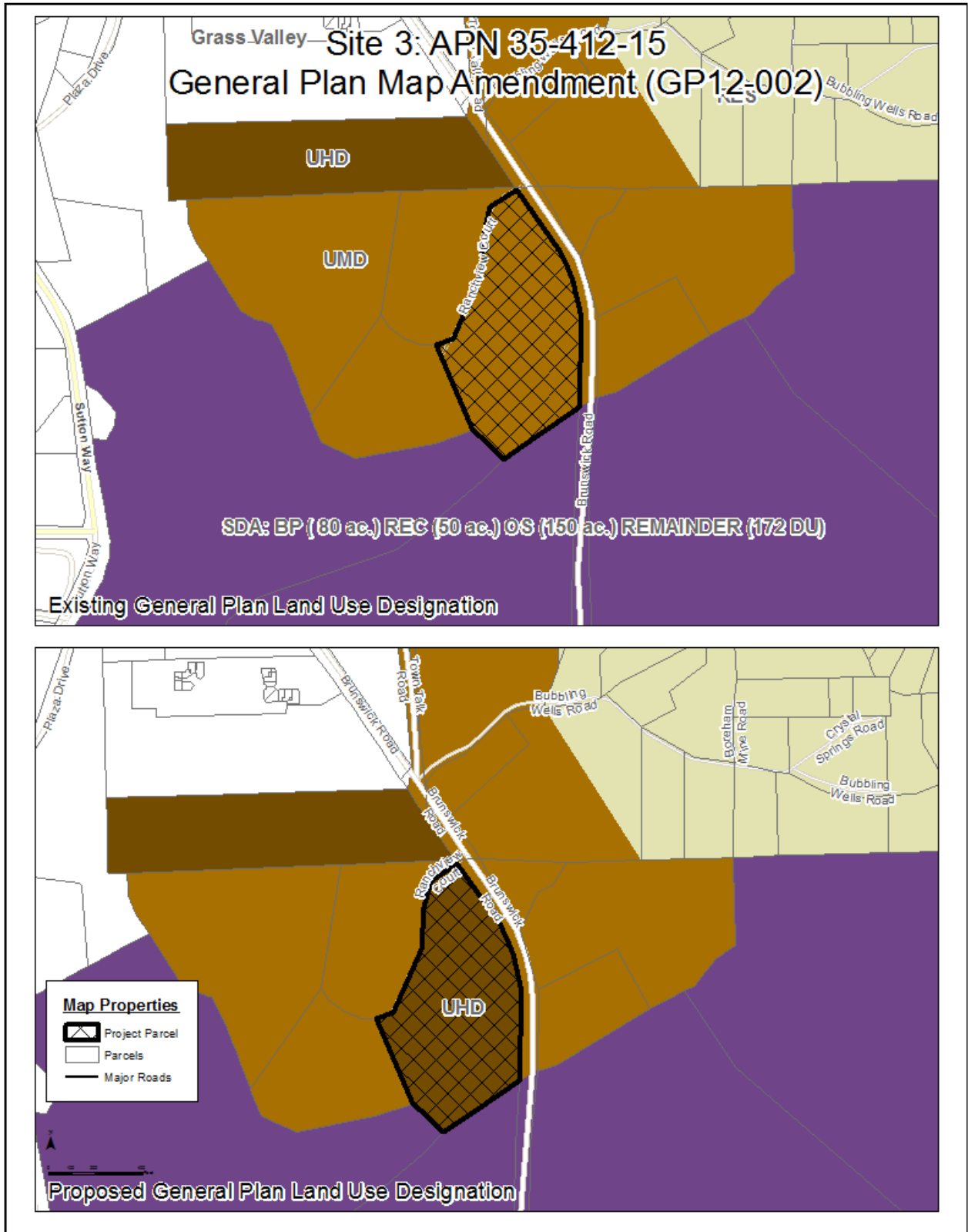
WHEREAS, the Board of Supervisors, after reviewing and considering the recommendations of the Nevada County Planning Commission regarding the proposed amendments to the Nevada County General Plan Land Use Map, all information and evidence submitted in favor and against the proposed amendments, and the complete record before it, has determined that an amendment to the County's General Plan is now warranted.

NOW, THEREFORE, BE IT RESOLVED, that the Board of Supervisors for the County of Nevada hereby finds and determines:

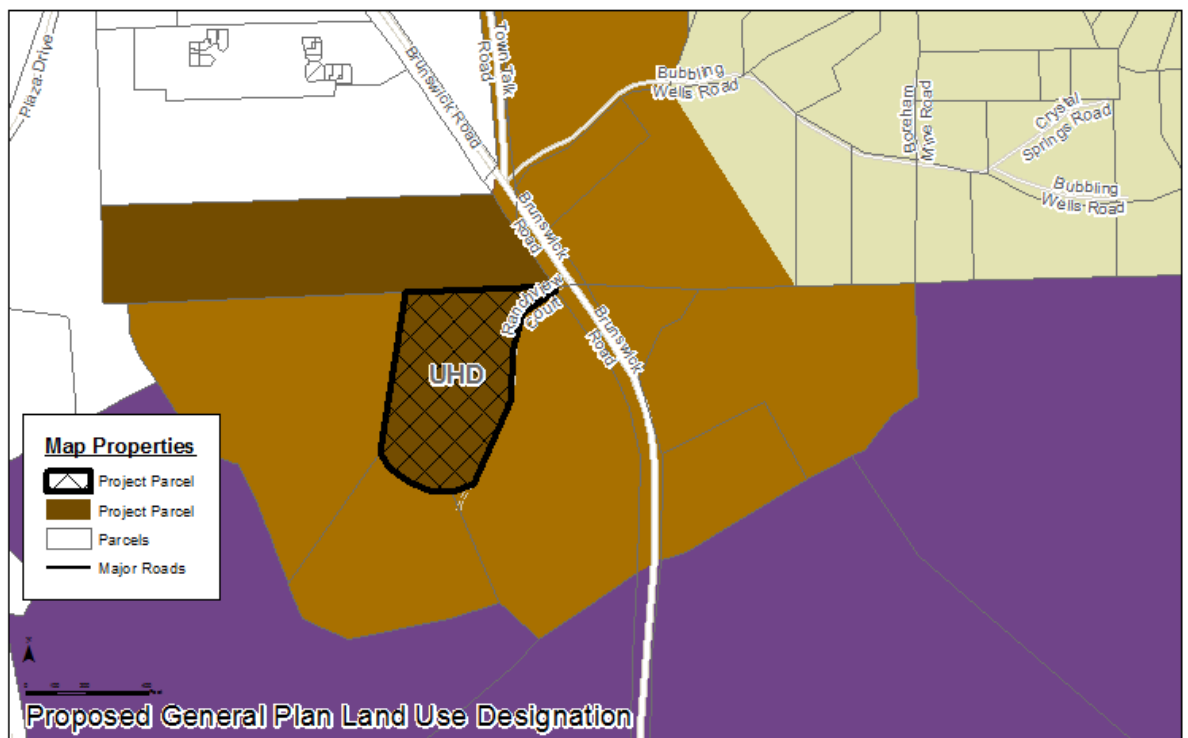
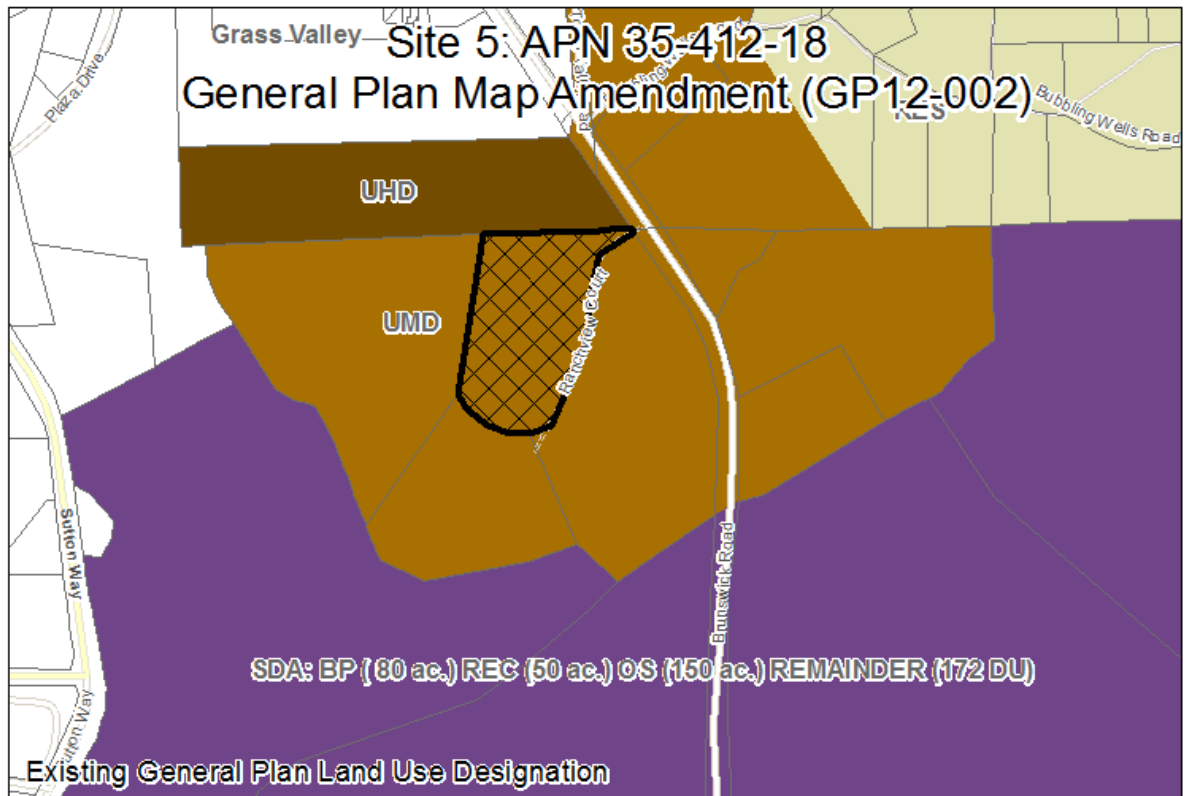
1. That the proposed amendment to the General Plan is consistent with and furthers the goals, objectives, policies, and implementation measures of the General Plan and provisions of the Nevada County Land Use and Development Code Chapter II Zoning Regulations, specifically those policies of the County General Plan Chapter 8 focused on provide adequate housing opportunities for all income and special needs segments of the County's population; and
2. That the Project sites are physically suitable for the Urban High Density (UHD) General Plan Land Use Designation, in that the Sites do not contain significant areas of excessively steep slopes or sensitive environmental resources, which cannot be avoided through appropriate site planning. The Sites have adequate access to a County maintained road or can establish access to County maintained road and subsequently will accommodate the anticipated future development of high density residential uses; and
3. That the Sites are physically suitable for the Urban High Density (UHD) General Plan Land Use Designation, as reviewed by the September 2012 Preliminary Site Assessment and EIR (SCH#2009072070). The UHD designation is consistent with other surrounding residential uses and will accommodate the unmet housing need from the 2009-2014 Regional Housing Need Plan for Nevada County and will assist the County in meeting future Regional Housing Need Allocations; and
4. That the proposed amendment will not be detrimental to the public interest, health, safety, convenience, or welfare of the County.

BE IT FURTHER RESOLVED that based on the foregoing findings, and the entire record before it, the Nevada County Board of Supervisors does hereby approve and adopt an amendment to the Nevada County General Plan Land Use Maps, re-designating those sites as described and set forth in Exhibit "A", consistent with boundaries of said properties.

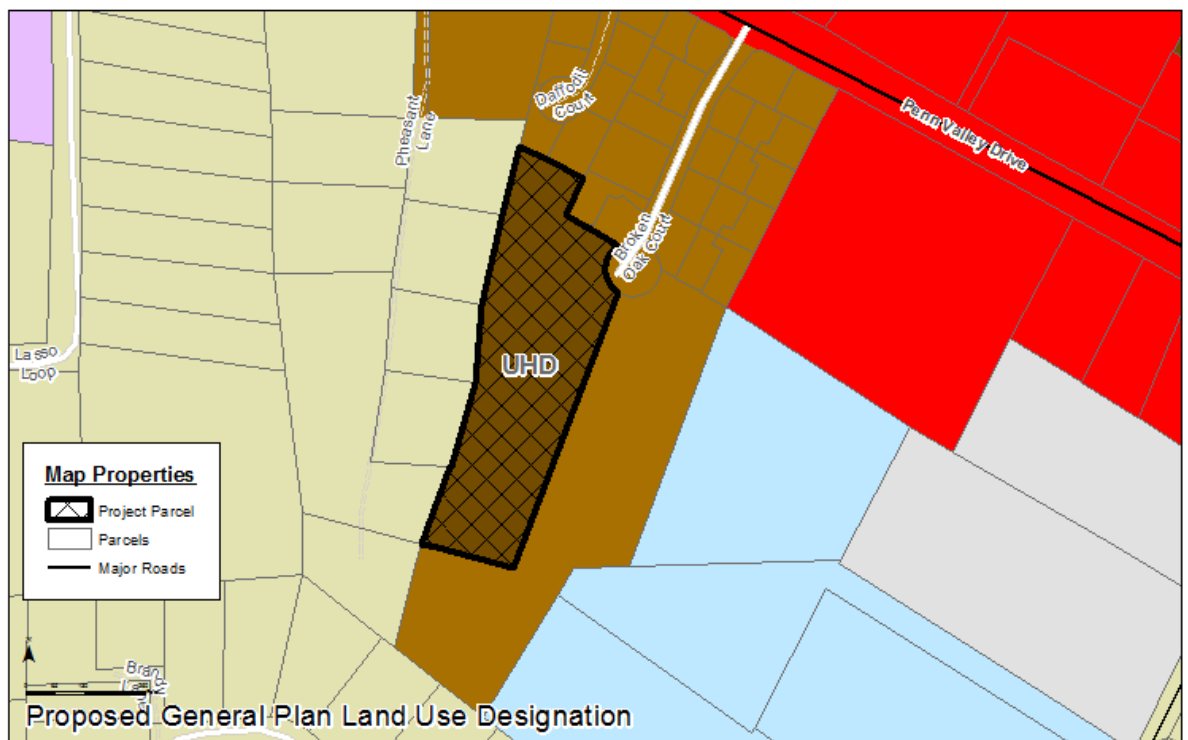
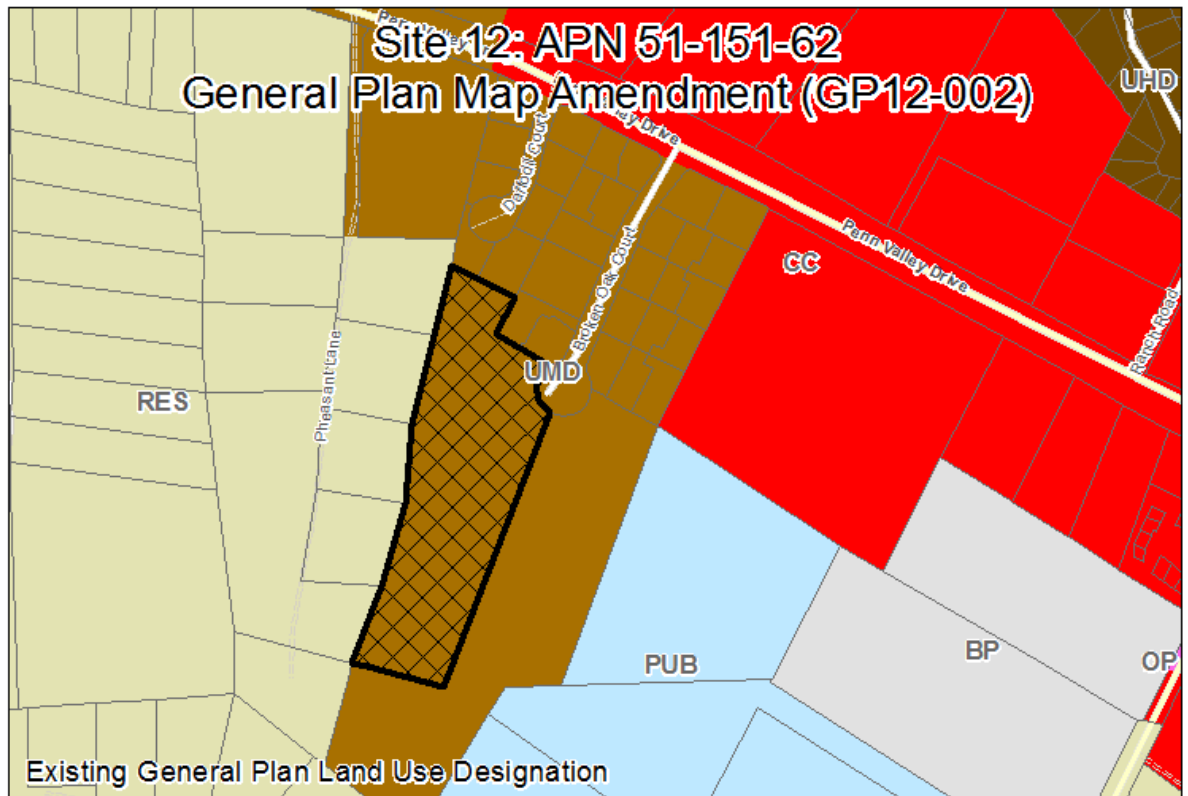
Exhibit A



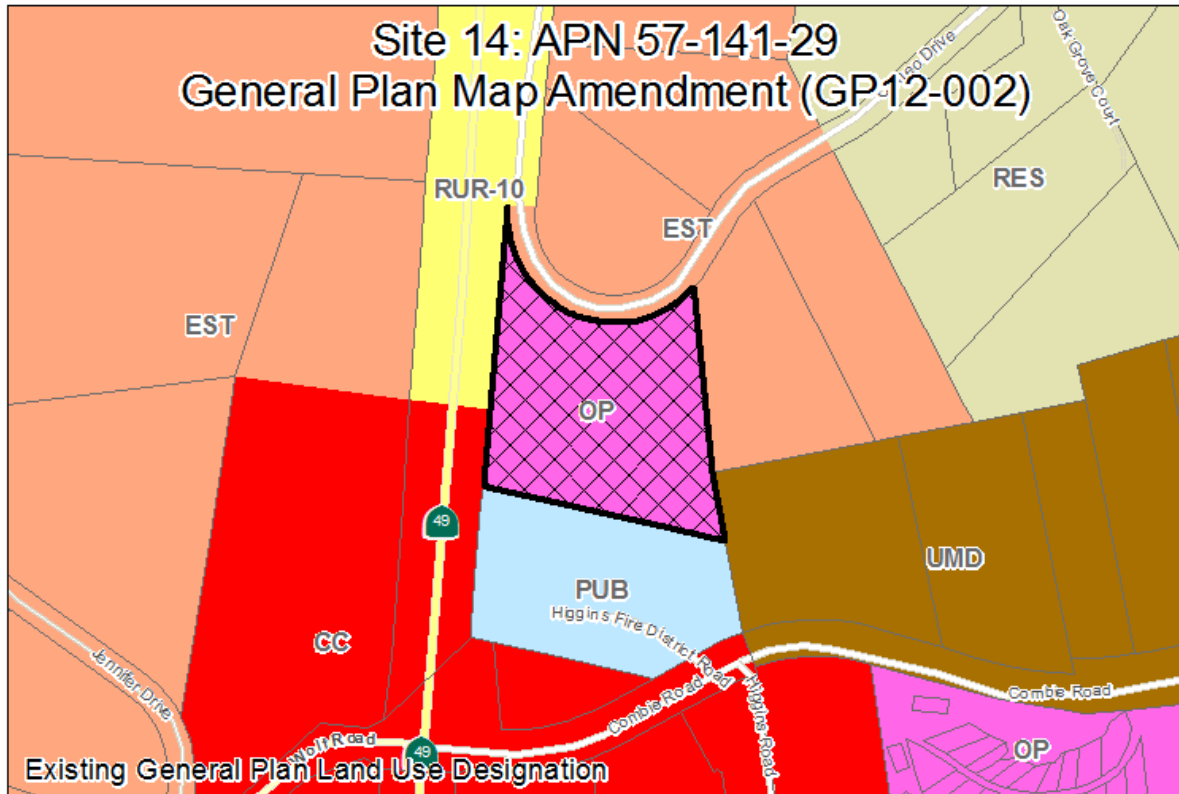
Grass Valley Site 5: APN 35-412-18
 General Plan Map Amendment (GP12-002)



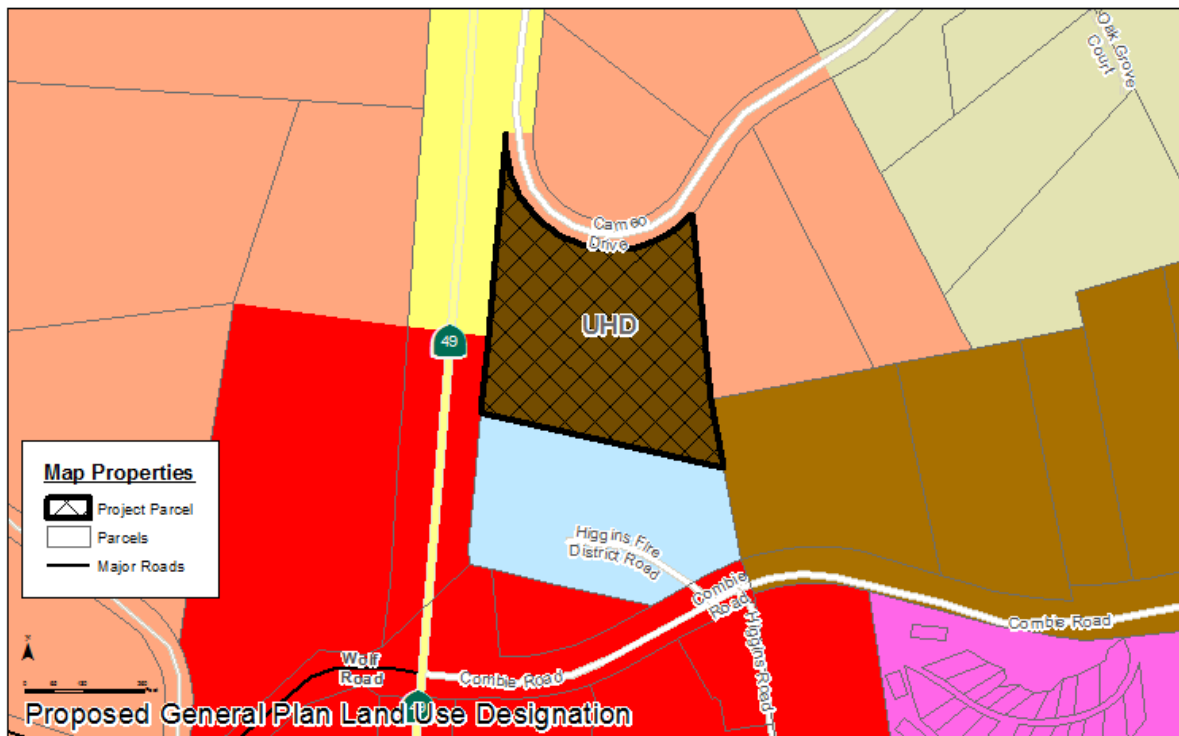
Site 12: APN 51-151-62
General Plan Map Amendment (GP12-002)



Site 14: APN 57-141-29
General Plan Map Amendment (GP12-002)

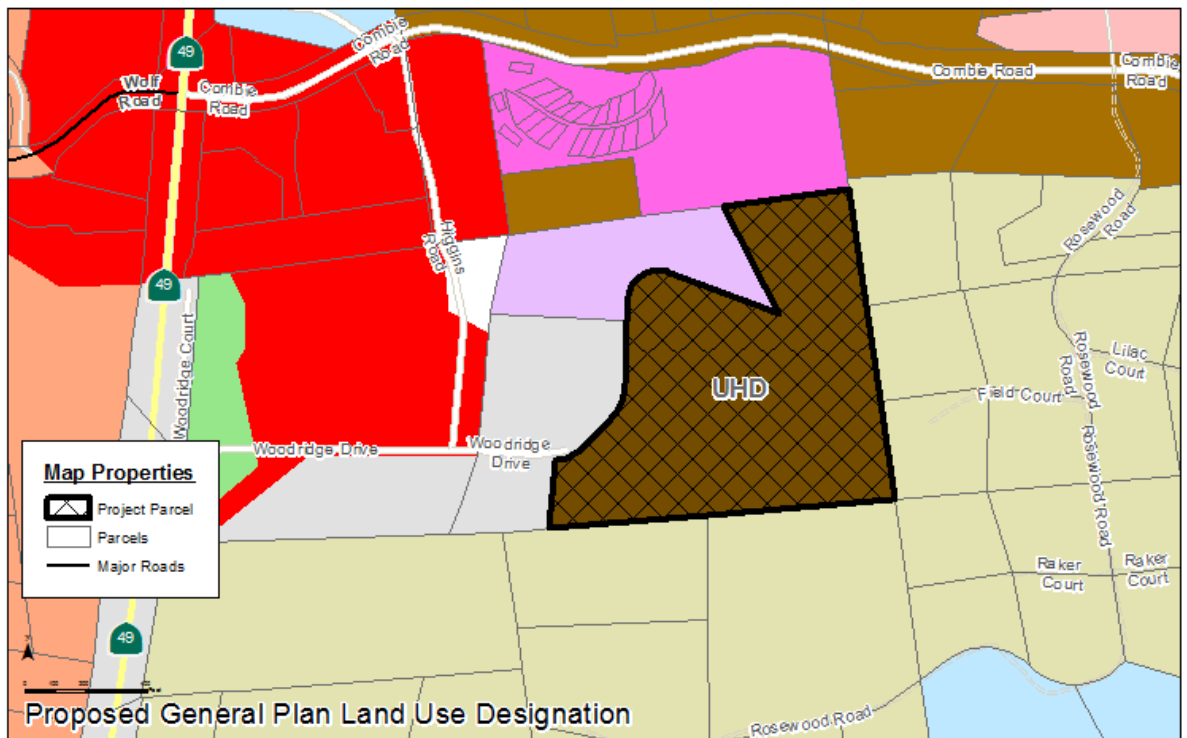
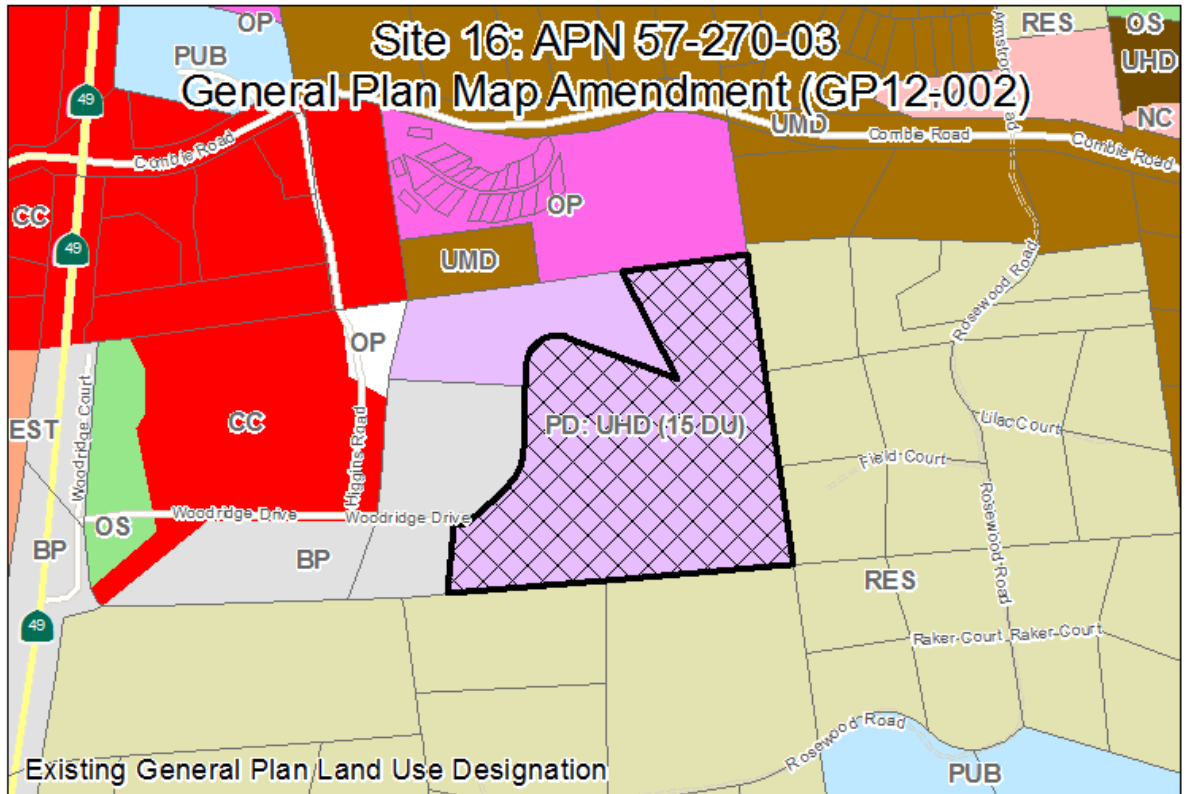


Existing General Plan Land Use Designation



Proposed General Plan Land Use Designation

Site 16: APN 57-270-03
 General Plan Map Amendment (GP12-002)



Site 18: APN 11-181-03
General Plan Map Amendment (GP12-002)

