

OES Wildfire Update

1. Green Waste Program Outbrief
2. CodeRED and Nixle Emergency Alert Test August 12
3. CodeRED Emergency Alert Training for Sheriff's Field Supervisors
4. Sheriff's Evacuation Tags
5. Ready Nevada County Dashboard
6. DSI Stats
7. Ready Nevada County NACO Award



2020 Green Waste Program



Countywide Code Red & Nixle Test



EMERGENCY ALERT TEST

AUGUST 12, 2020



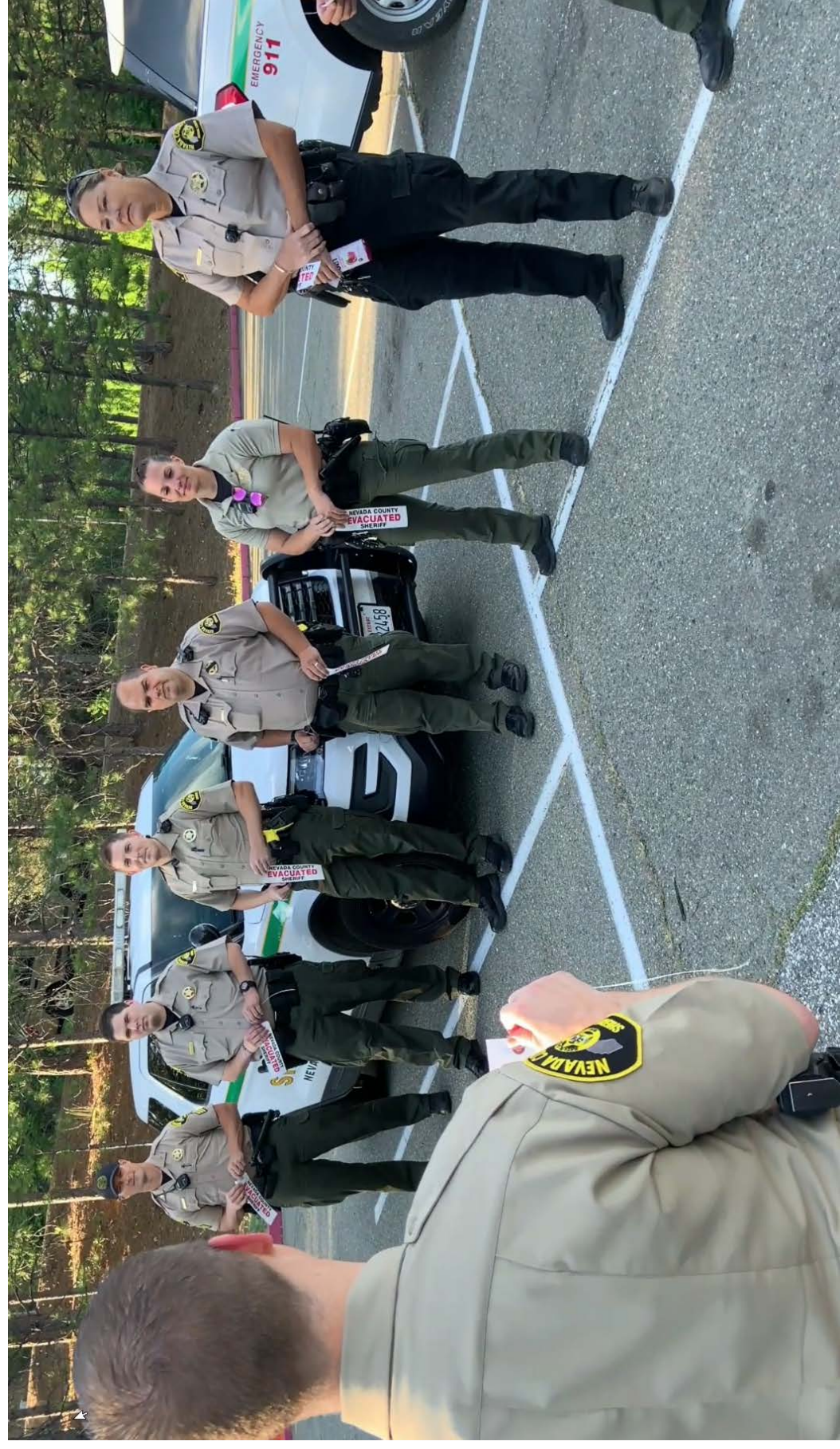
ReadyNevadaCounty.org

Code Red Training

- 17 Sherriff's Field Supervisors Trained
- Provided instruction on CodeRED and IPAWS
- Ensured all individuals had functioning accounts
- Training culminated in an actual message being sent to a controlled group.
- Future trainings planned for Fire Personnel in August



Sherriff's Office Evac Tag Program



Ready Nevada County Dashboard

Ready Nevada County Dashboard

Wildfire & Evacuation Incident Dashboard

Evacuation Route Pre-Planner

Nevada County COVID-19 Dashboard

PG&E PSPS

Live Fire Webcams

Current Weather

Nevada County Burn Day Status

Feedback Form

Ready Nevada County Website



Expand the side-panel on the left for more info and mobile version link.

About & How to Use

Note: Any dashboard element can be resized.

[Link to MOBILE version of Wildfire & Evacuation Incident Dashboard](#)

Mobile Version:
Scan this QR code using your smartphone camera to access the mobile version of the Wildfire & Evacuation Incident Dashboard.

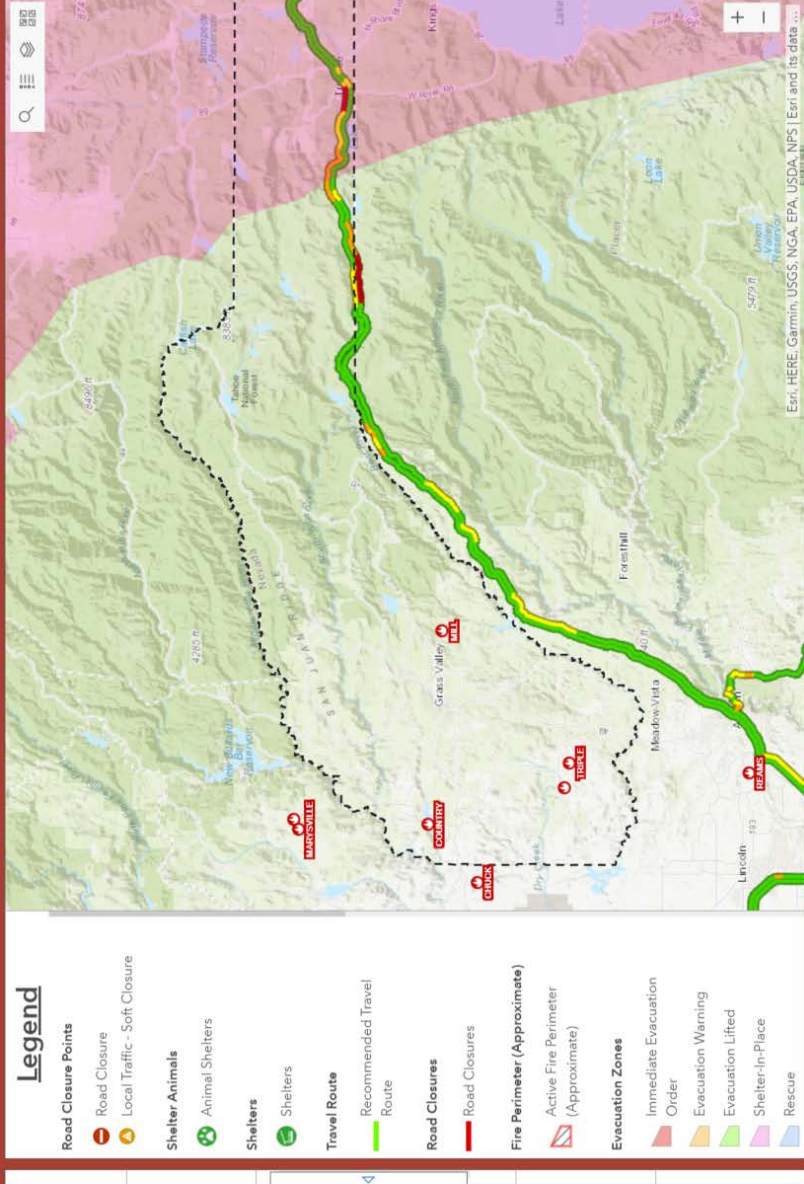


This map will be used to communicate current disaster related information, such as road closures, evacuation zones, recommended travel routes, and activated shelters.

The following are the definitions of the types of evacuations:

- **Immediate Evacuation Order:** Immediate threat to life. This is a lawful order to leave now. The area is lawfully closed to public access.
- **Evacuation Warning:** Potential threat to life and/or property. Those who require additional time to evacuate, and those with pets and livestock should leave now.
- **Shelter-In-Place:** Go indoors. Shut and lock doors and windows. Prepare to self-protect until further notice and for

There is NOT an active emergency incident at this time.



Tweets by @NevCoOES

Nevada County OES Retweeted
CAL FIRE Nevada-Yuba-Placer Unit @CALFIREUCU
#CountyFire (Final) CAL FIRE firefighters, with Rough and Ready Fire and Penn Valley Fire have contained the 1.5 acre fire. Firefighters responded to a vegetation fire on County Heights Drive in Penn Valley (Nevada County). The cause is under investigation.



Jul 20, 2020

Nevada County OES

@NevCoOES
Thank you to our friends @NevadaCountyART for using their creative reach to encourage everyone to be #ReadyNevadaCounty!
nevadacountyarts.org/fire-season-pr...



Jul 20, 2020

Nevada County OES Retweeted

Twitter

Codefied Alerts

Notif Alerts (Truckee)

Esri, HERE, Garmin, USGS, INGA, EPA, USDA, NPS | Esri and its date ...

Ready Nevada County Dashboard

Expand the side-panel on the left for more info and mobile version link.

There is **NOT** an active emergency incident at this time.

Acres Burned



0

Evacuation Zones



0

% Containment



0%

Activated Shelters



0

Personnel Deployed



0

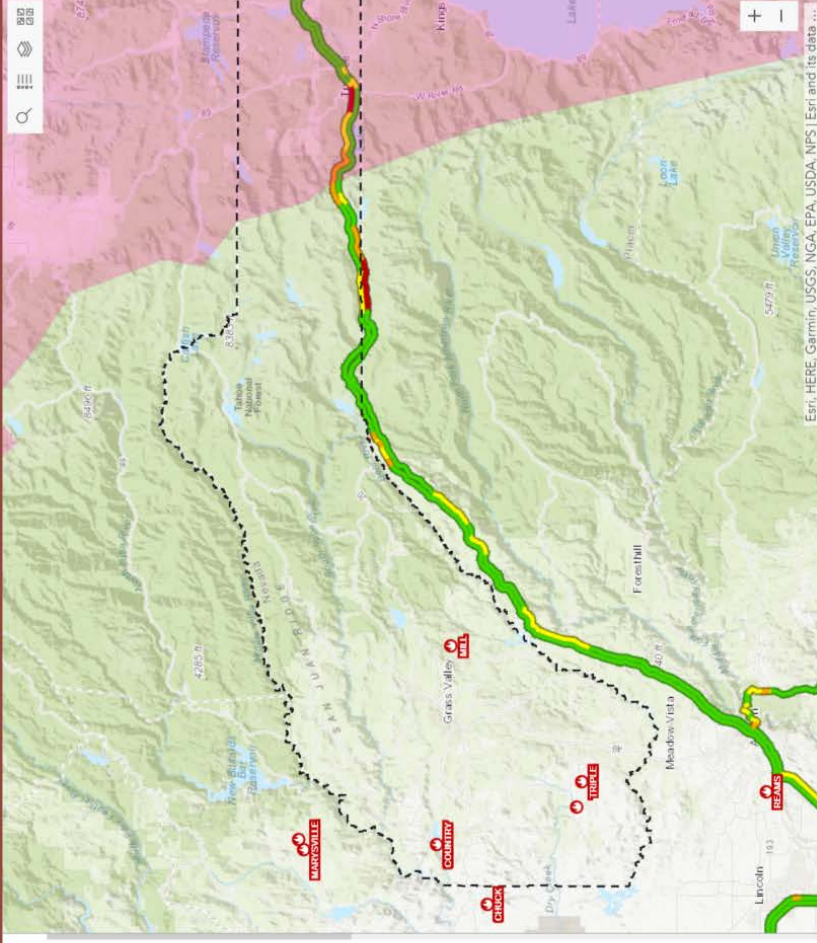
Structures Destroyed



0

Legend

- Road Closure Points**
 - Road Closure
 - Local Traffic - Soft Closure
- Shelter/Animals**
 - Animal Shelters
- Shelters**
 - Shelters
- Travel Route**
 - Recommended Travel Route
- Road Closures**
 - Road Closures
- Fire Perimeter (Approximate)**
 - Active Fire Perimeter (Approximate)
- Evacuation Zones**
 - Immediate Evacuation
 - Order
 - Evacuation Warning
 - Evacuation Lifted
 - Shelter-in-Place
 - Rescue



Tweets by @NevCOES

Nevada County OES Retweeted
CAL FIRE Nevada-Yuba-Placer Unit
 @CALFIREUCD
 #CountyFire (Final) CAL FIRE firefighters, with Rough and Ready Fire and Penn Valley Fire have contained the 1.5 acre fire. Firefighters responded to a vegetation fire on County Heights Drive in Penn Valley (Nevada County). The Cause is under investigation.



Jul 20, 2020

Nevada County OES
 @NevCOES
 Thank you to our friends @NevadaCountyART for using their creative reach to encourage everyone to be #ReadyNevadaCounty! nevadacountyarts.org/fire-season-pr...



Jul 20, 2020

Nevada County OES Retweeted

Twitter

CodeRed Alerts

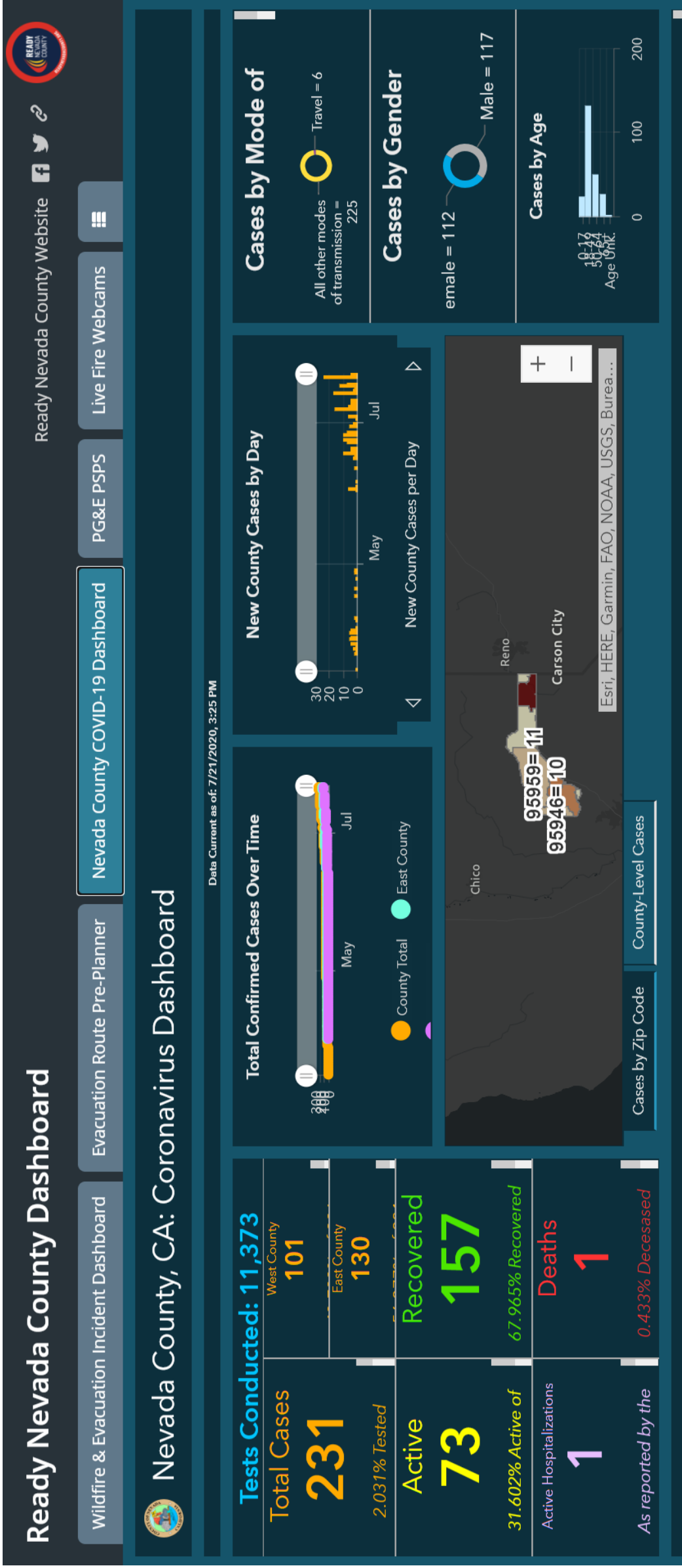
Noble Alerts (Truckee)

Esri, HERE, Garmin, USGS, NGA, EPA, USDA, NPS | Esri and its data ...

Ready Nevada County Dashboard

The dashboard features a top navigation bar with the following elements from left to right: "Ready Nevada County Dashboard", "Wildfire & Evacuation Incident Dashboard", "Evacuation Route Pre-Planner", "Nevada County COVID-19 Dashboard", "PG&E PSPS", "Live Fire Webcams", "Current Weather", "Nevada County Burn Day Status", "Feedback Form", and "Ready Nevada County Website" with social media icons. The main map area displays a topographic map of Nevada County, California, with several overlays: a black dashed line representing the county boundary, a yellow line for evacuation routes, and a red line for fire zones. Key locations labeled include Shingon, Colfax, Rough and Ready, and Meadow Vista. The map includes a search bar, navigation controls (zoom in/out, home, refresh), and a scale bar. The bottom right corner shows the coordinates 41.1279, 39.476 Degrees and the ESRI logo. The footer text reads "Bureau of Land Management, Esri, HERE, Garmin, NGA, USGS, NPS".

Ready Nevada County Dashboard



Ready Nevada County Dashboard

There are no current plans for a Public Safety Power Shutoff

There are no Public Safety Power Shutoff (PSPS) events at this time.

[Learn about Public Safety Power Shutoffs](#)

Find out how you're impacted



YOUR SPECIFIC ADDRESS

Get the most accurate information

Find out estimated shutoff and restoration times for an address.

[Look up your address](#)



OUTAGE MAP

See a general overview of affected areas

View current outages and future forecasted outage areas.

[Visit the outage map](#)

How to Use:

Click on the selection icon -



in the upper-left corner of the map. Then, select a camera location from the map to view the feed in the display.

Map Toolbar navigation:

The map toolbar is located in the upper-right corner:



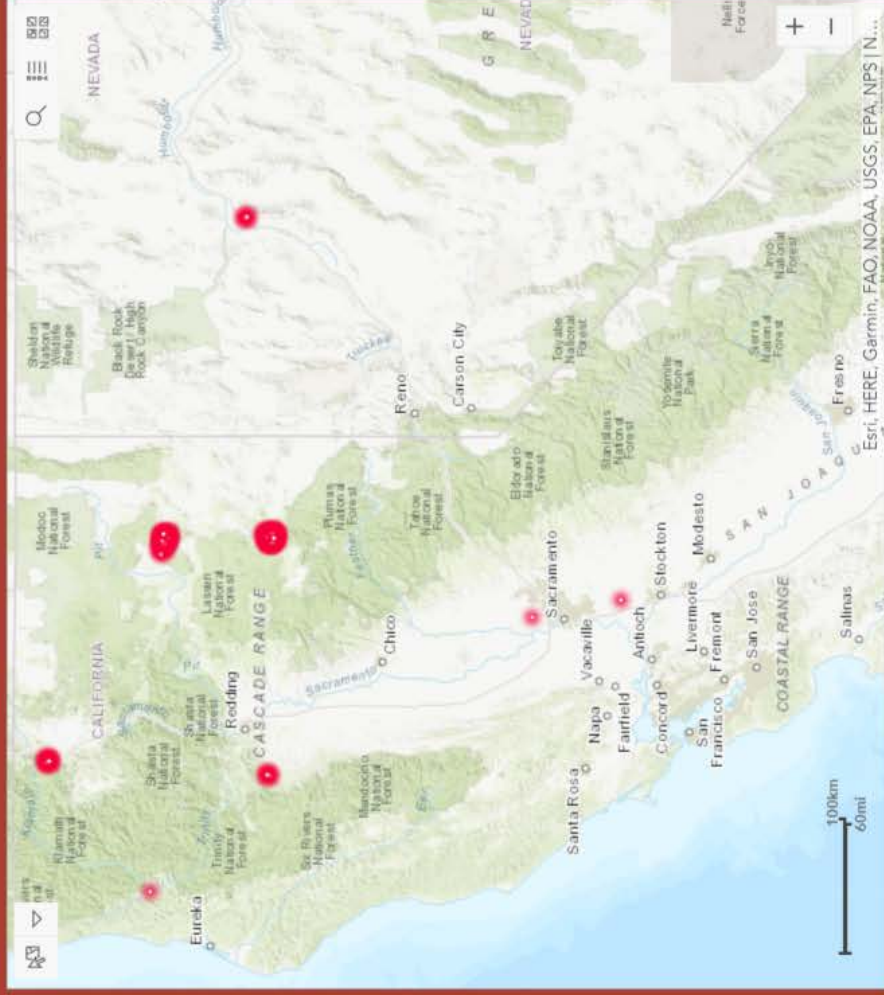
- 1: Use the Search Tool to locate your address.
- 2: Map Legend
- 3: Change the basemap

Data Source:

CalOES, The Nevada Seismological Laboratory, The High Performance Wireless Research and Education Network, Cal Trans

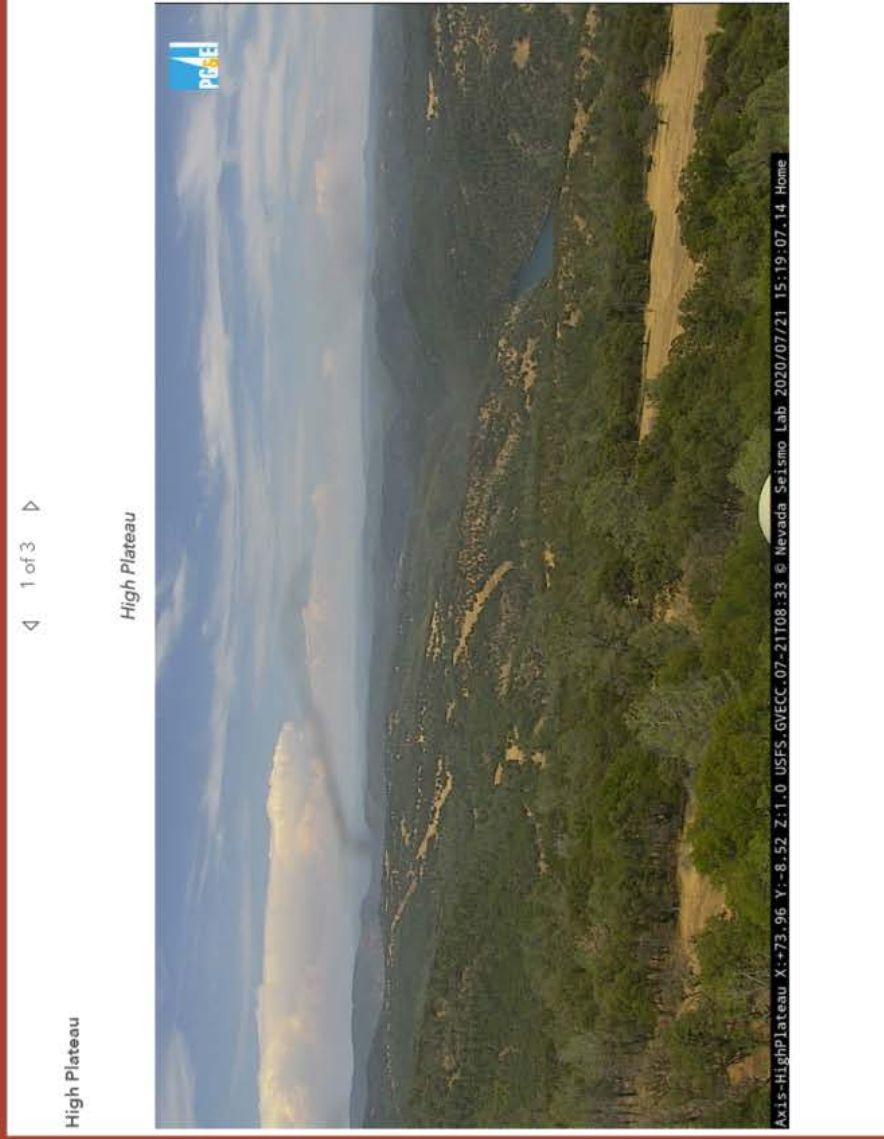
Terms of Use:

This product is for use by Cal OES personnel and supporting partners to conduct emergency management operations. The information contained herein has been compiled from various local, state, and federal agencies. This information is constantly changing, and Cal OES does not verify or certify the information contained herein.



Satellite (MODIS) Thermal Hotspots and Fire Activity

CalOES California Fire Webcams



High Plateau

High Plateau

1 of 3



Ready Nevada County Dashboard

Ready Nevada County Dashboard

Ready Nevada County Website

Wildfire & Evacuation Incident Dashboard

Evacuation Route Pre-Planner

Nevada County COVID-19 Dashboard

PG&E PSPS

Live Fire Webcams

Current Weather

Nevada County Burn Day Status

Feedback Form

Temperature 1°

Windy.com

Wind

Tuesday 21 - 1 PM

Tuesday 21 - 3 PM

Awesome weather forecast at www.windy.com

Ready Nevada County Dashboard

Ready Nevada County Dashboard

Ready Nevada County Website

Wildfire & Evacuation Incident Dashboard

Evacuation Route Pre-Planner

Nevada County COVID-19 Dashboard

PG&E PSPS

Live Fire Webcams

Current Weather

Nevada County Burn Day Status

Feedback Form

About Contact Board Meetings Email Lists Payments **Coolbox Burn Day Status** Indoor Burn Day Status

Search...



SERVING NEVADA, SIERRA AND PLUMAS COUNTIES IN CALIFORNIA

- Air Quality Info
- Burning Info
- Vapor Recovery
- Permits
- Grants & Incentives
- Public Notices
- Rules
- Forms
- FAQ

Burn Day Status

USE THE TABLE BELOW TO SEE IF IT IS A BURN DAY IN YOUR AREA. Find your area on the left and look in the column for the day you are interested in. Be sure to read the Special Conditions for your area.

NO means that Open Burning is Prohibited in your area on the day specified.

YES means that Open Burning is Allowed in your area on the day specified.

Recommended burn hours are 9:00 AM to 3:00 PM unless otherwise noted below.

Burn only natural vegetation that has been down at least 3 weeks and grew on the property where you are burning.

AREA	EVERY DAY	EVERY DAY	SPECIAL CONDITIONS
Western Nevada County (West of Norden, including Soda Springs)	NO	NO	The summer burn ban is now in effect. Burn permits are suspended and residential open burning is prohibited until further notice. Burning is always prohibited in the city limits of Grass Valley and Nevada City.
Truckee Area / Eastern Nevada County	NO	NO	The summer burn ban is now in effect. Burn permits are suspended and residential open burning is prohibited until further notice.
Sierra County	NO	NO	The summer burn ban is now in effect. Burn permits are

Ready Nevada County Dashboard

Ready Nevada County Dashboard

Wildfire & Evacuation Incident Dashboard

Evacuation Route Pre-Planner

Nevada County COVID-19 Dashboard

PG&E PSPS

Live Fire Webcams

Current Weather

Nevada County Burn Day Status

Feedback Form



Ready Nevada County Website



Feedback

Please provide any feedback on this application using the comment box below.

For other inquiries, you can email the County of Nevada's GIS Department:
machinuity@co.nevada.ca.us

Comments are anonymous and will not be made public.

1000

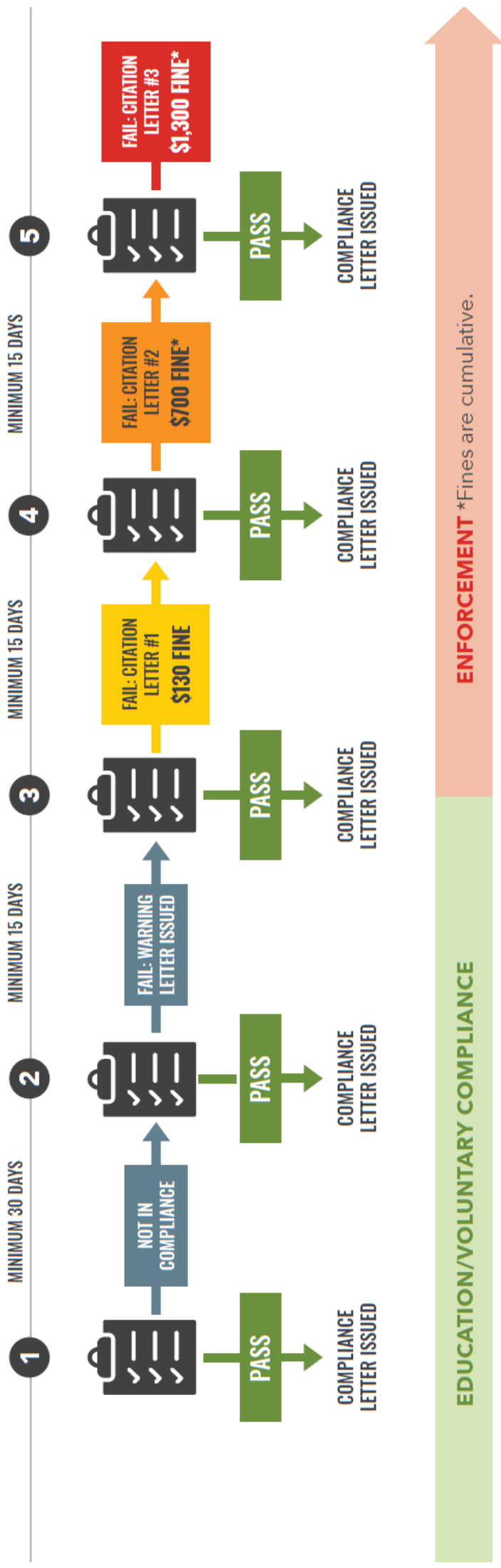
Submit

Powered by Survey123 for ArcGIS

County DSI Program Statistics



DEFENSIBLE SPACE PROGRAM TIMELINE FOR PROCESSING INSPECTIONS



NACO Award

County of Nevada has been recognized with an Achievement Award from the **National Association of Counties (NACo)**. The awards honor innovative, effective county government programs that strengthen services for residents.

NACo recognized **Ready Nevada County**, in the **Risk and Emergency Management Category**, for the multimedia awareness campaign coordinated by the County of Nevada Office of Emergency Services to raise awareness and mobilize the community to prevent and prepare for wildfire.

Questions?



READYNEVADACOUNTY.ORG