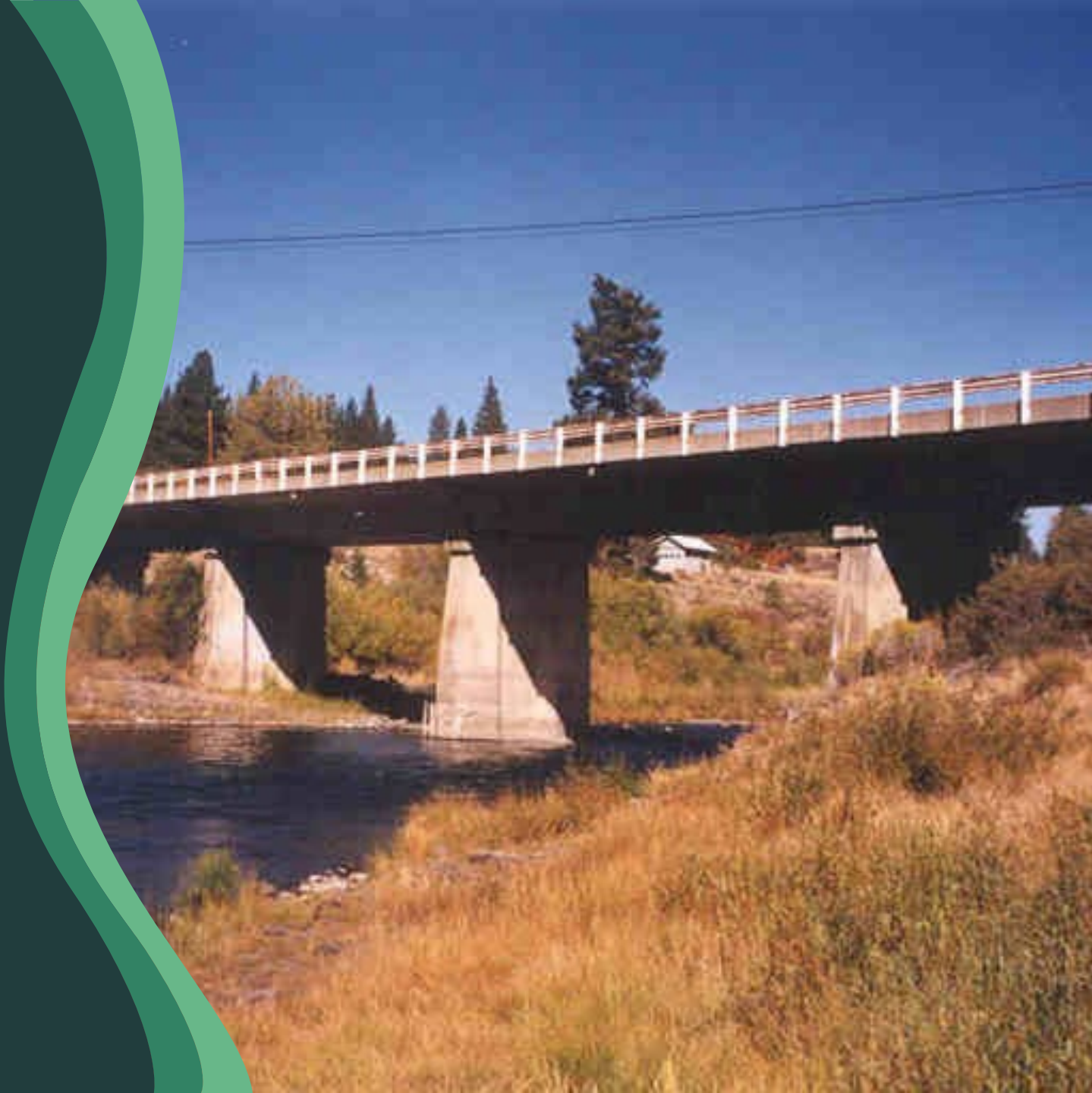


Hirschdale Road Bridge(s) Project Resolution of Necessity



Trisha Tillotson
CDA Director

Overview

- **Background**
- **Temporary Construction Easements needed for the Project**
- **Next Steps**

Hirschdale Road Bridge Projects

1. The Hirschdale Rd at the Truckee River Bridge, originally built in 1926 is scheduled for replacement
2. The Hirschdale Rd at the Union Pacific Railroad Crossing Bridge originally built in 1925 is scheduled for rehabilitation



Background

- Project design is 90% complete
- Permits are 90% complete
- Environmental documents are 100% complete (excluding filing for the staircase on the Truckee River bridge)
- Utility relocation process is underway.
- Temporary construction easements are incomplete

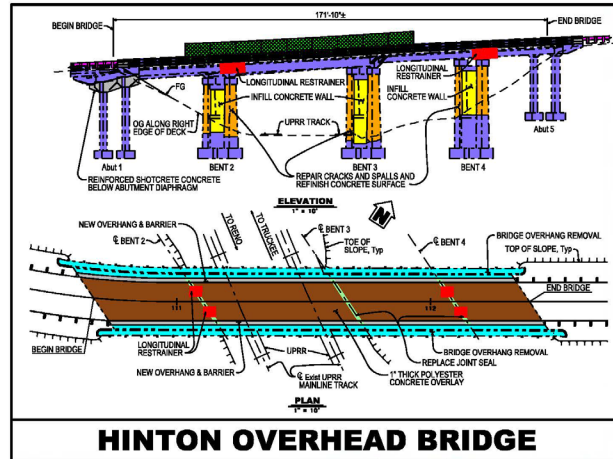


Temporary Construction Easements (TCE)

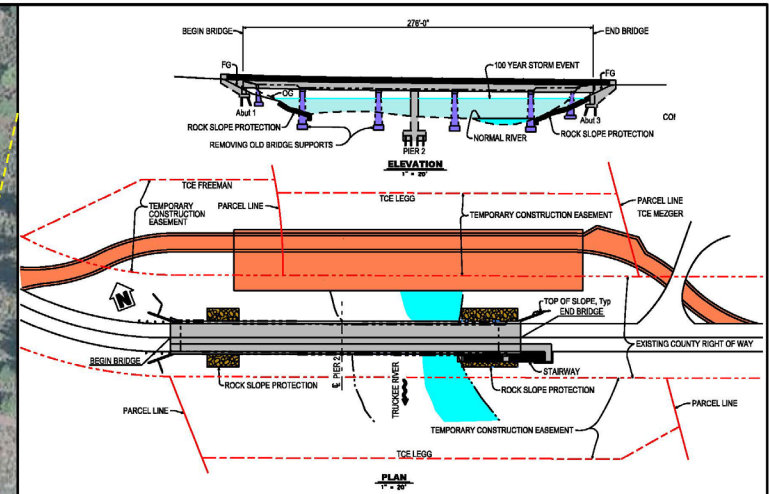
TCE's needed on 5 different parcels owned by 3 separate individuals

New property appraisals have been completed and new offers based on the appraisals have been made.

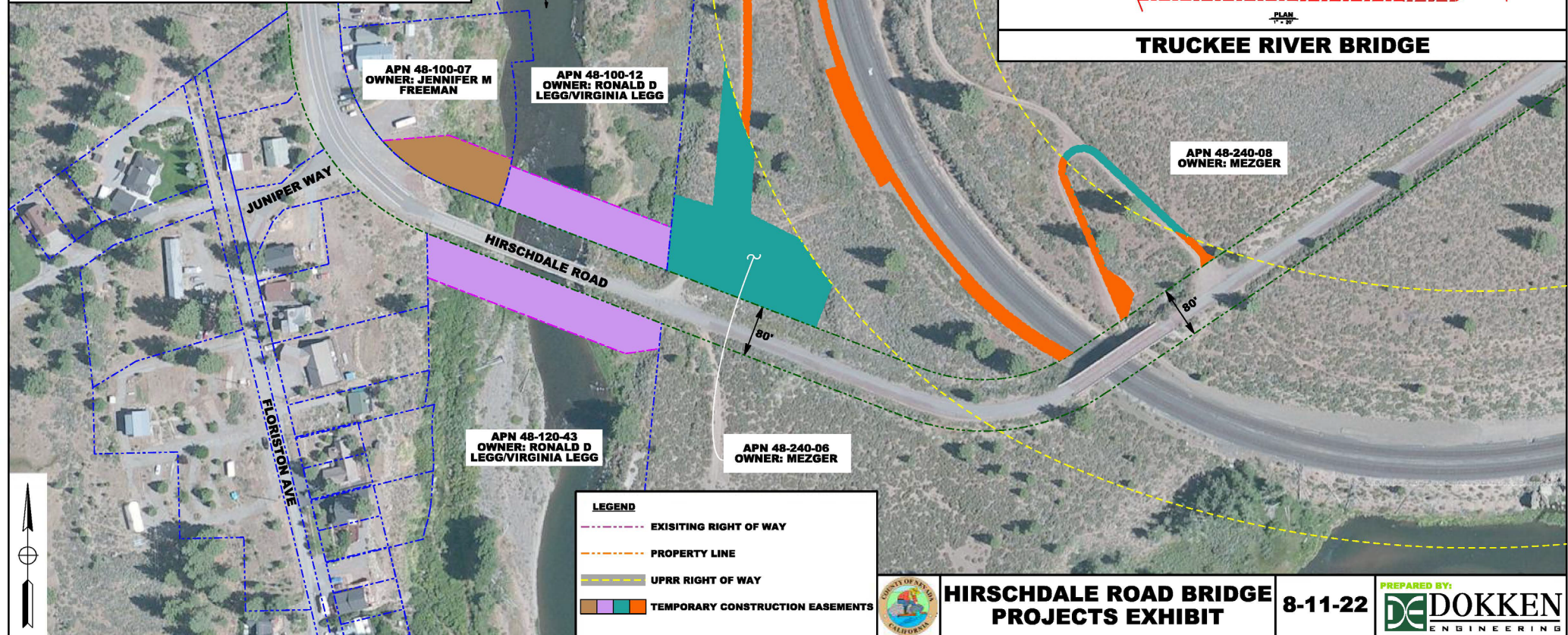
TCE's are for 5 years, with work anticipated in 2-3 of the 5 years.



HINTON OVERHEAD BRIDGE



TRUCKEE RIVER BRIDGE



**HIRSCHDALE ROAD BRIDGE
PROJECTS EXHIBIT**

8-11-22

PREPARED BY:
**DE DOKKEN
ENGINEERING**

TCE Acquisition Effort Overview

- **Prior to Jan 2021: Multiple conversations w/ property owners**
- **1/4/21: offers made but not accepted**
- **Feb-October 2022: Negotiations including changes to address concerns**
- **11/4/2022: new appraisals**
- **11/16-17/22 new offers made incorporating concerns of property**

Areas & Properties

- .269 acres from APN 048-100-007
- .416 acres from APN 048-100-012
- .555 acres from APN 048-120-043
- .890 acres from APN 048-240-006
- .005 acres from APN 048-240-008

TCE status

Staff and the property owners east of Truckee River have reached a tentative agreement(s)

Staff has reached a tentative agreement with Union Pacific Railroad

Property owner west of Truckee River is considering latest offer

Next Steps

- **Staff recommends approval of the Resolution of Necessity (RON) process**
- **The resolution states that the County intends to acquire the needed Temporary Construction Easements**
- **The property will be acquired pursuant to Sections 26 and 943 of the Streets and Highways Code if TCE's are not obtained**
- **County has 6 months from adoption of the Resolution of Necessity to start legal procedures to acquire the TCE's thru the eminent domain process**

Recommendation

Approve the attached Resolution of Necessity for Temporary Construction Easements as listed in the Resolution

COMMENTS/ QUESTIONS

East side Truckee River Bridge

