

# Nevada County, CA: 2021 Redistricting - Option 4








## Legend

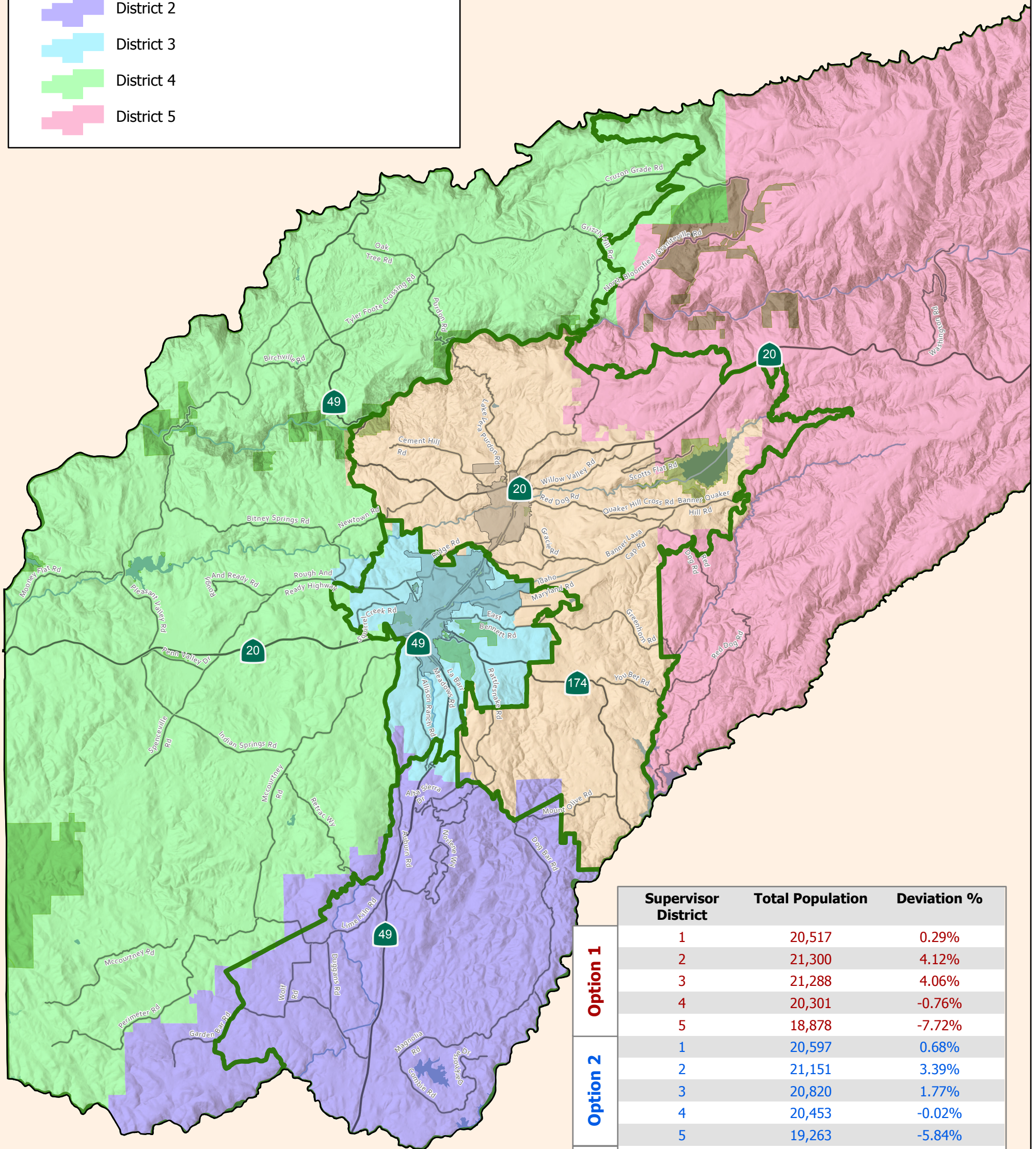
Option 4



Objective: Modify Option 1 to equalize population, move Alison Ranch area to District 2, Bitney Springs to District 4, South area to District 4

Current Supervisor District Boundaries

-  District 1
-  District 2
-  District 3
-  District 4
-  District 5



	Supervisor District	Total Population	Deviation %
<b>Option 1</b>	1	20,517	0.29%
	2	21,300	4.12%
	3	21,288	4.06%
	4	20,301	-0.76%
	5	18,878	-7.72%
<b>Option 2</b>	1	20,597	0.68%
	2	21,151	3.39%
	3	20,820	1.77%
	4	20,453	-0.02%
	5	19,263	-5.84%
<b>Option 3</b>	1	21,254	3.9%
	2	20,802	1.69%
	3	20,649	0.94%
	4	20,973	2.52%
	5	18,606	-9.05%
<b>Option 4</b>	1	20,566	0.53%
	2	20,850	1.92%
	3	21,042	2.86%
	4	20,907	2.2%
	5	18,919	-7.52%

