



SIERRA-SACRAMENTO VALLEY EMERGENCY MEDICAL SERVICES AGENCY

Serving the counties of Butte, Colusa, Nevada, Placer, Shasta, Siskiyou, Sutter, Tehama, Yuba & Glenn

TO: Nevada County Board of Supervisors

FROM: Victoria Pinette, Executive Director

DATE: December 11, 2018

RE: Update to the Board

BACKGROUND

S-SV is a JPA that regulates Emergency Medical Services, Nevada County is one of 10 counties in our region. One Board Supervisor from each County is on our Governing Board. Our offices are located in Rocklin and Redding. Our duties are :

- certify and accredit EMS personnel – EMR, EMT, AEMT, Paramedics, Flight Nurses, MICNs;
- Determine exclusive operating areas and contract with EMS providers;
- Investigations
- designation of trauma, STEMI (cardiac) Stroke centers and base hospitals;
- Review and approve medical dispatch protocols;
- Approve and monitor air ambulances;
- Create policy and protocol for pre-hospital personnel.
- Quality Improvement

In addition to these duties we have staff out in the field observing operations, conducting site visits at training programs, inspecting ambulances, attending EMCC and Fire Chiefs meetings and conducting site visits at trauma centers. We have a robust air ambulance review.

FUNDING

Our funding comes from County contributions (41 cents per capita + \$10,000), State General Fund (only available to EMS Agencies with 3 or more counties) and fees (i.e., certification, training programs, trauma/STEMI). Our OPEB unfunded liability is fully paid.

RESPONSE TIMES

Response times are monitored and analyzed monthly. We are specifically looking for outliers, such as extended responses and other instances that may have caused a delayed response. They are presented to our Board and posted on our website.



EXCLUSIVE OPERATING AREAS

Nevada County has three areas that are designated as exclusive operating areas, per statute. Those are Penn Valley Fire Protection District, Sierra-Nevada Ambulance and Truckee Fire Protection District at Donner Summit. They are contracted with our Agency. Truckee Fire Protection District within the town of Truckee is non-exclusive.

NALOXONE APPROVED BLS (Basic Life Support) PROVIDERS

Grass Valley Fire Department
Higgins Fire District
Nevada City Fire Department
Nevada County Consolidated Fire District
North San Juan Fire District

TRAUMA SYSTEM

There are no designated trauma centers within Nevada County. Trauma patients are transported from the field to Renown or Roseville Medical Center. Tahoe Forest has recently expressed some interest in Level III designation.

OUR COMMITTEES

- JPA Governing Board of Directors – meets the second Friday of every odd month.
- Medical Control Committee – establishes policy and protocol. Well attended by field providers, ER physicians and base hospital nurses.
- Air Ambulance Advisory Committee
- Regional Trauma Quality Improvement Committee
- Regional Continuous Quality Improvement Committee
- Regional STEMI Quality Improvement Committee

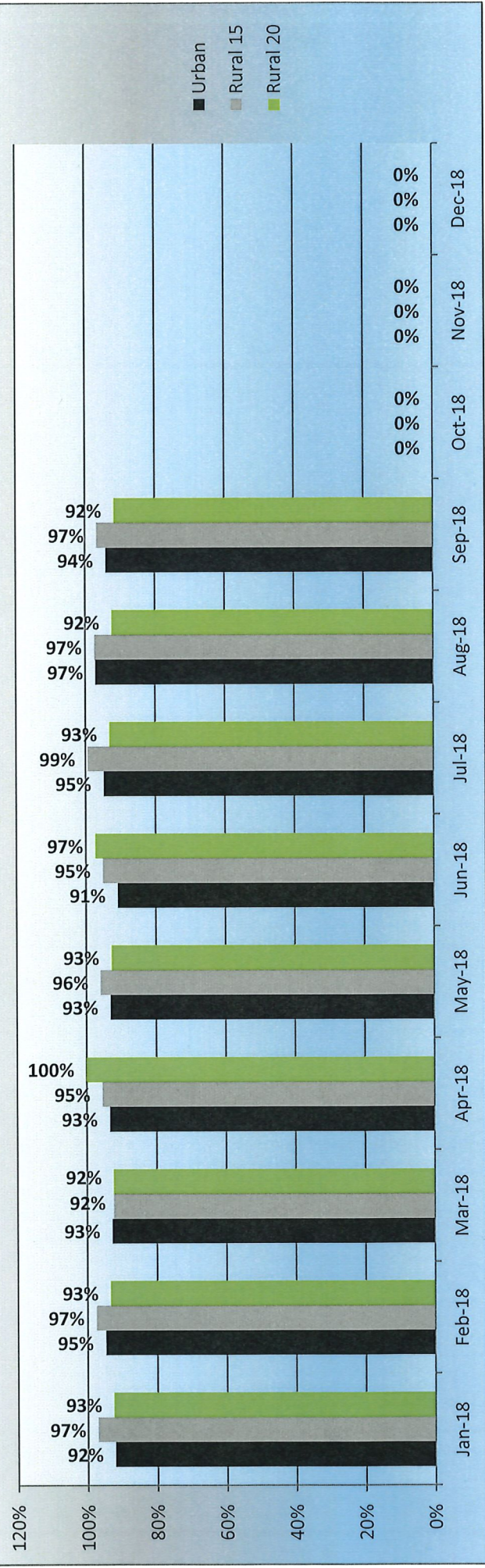
**THANK YOU SUPERVISOR WESTON FOR 12 YEARS OF SERVICE TO OUR
AGENCY**

Sierra Nevada Ambulance - Response Time Compliance - 2018

SNA	Grass Valley/Nevada City - Code 3 (9 Minutes)				Sierra Nevada Rural - Code 3 (15 Minutes)				Sierra Nevada Rural - Code 3 (20 Minutes)				Grass Valley/Nevada City - Code 2 (18 Minutes)				Sierra Nevada Rural - Code 2 (45 Minutes)				IFT Calls	Total # of Calls		
	# of Calls	# Late	Late %	On Time %	# of Calls	# Late	Late %	On Time %	# of Calls	# Late	Late %	On Time %	# of Calls	# Late	Late %	On Time %	# of Calls	# Late	Late %	On Time %			# of Calls	# of Calls
Jan-18	191	15	8%	92.1%	171	5	3%	97.1%	40	3	8%	92.5%	87	1	1%	98.9%	50	0	0%	100.0%	24	9	268	840
Feb-18	192	10	5%	94.8%	155	4	3%	97.4%	30	2	7%	93.3%	49	0	0%	100.0%	45	0	0%	100.0%	16	9	277	773
Mar-18	194	14	7%	92.8%	157	12	8%	92.4%	39	3	8%	92.3%	45	0	0%	100.0%	56	0	0%	100.0%	25	14	281	811
Apr-18	165	11	7%	93.3%	154	7	5%	95.5%	19	0	0%	100.0%	48	0	0%	100.0%	52	0	0%	100.0%	18	13	278	747
May-18	158	11	7%	93.0%	146	6	4%	95.9%	41	3	7%	92.7%	53	0	0%	100.0%	52	0	0%	100.0%	22	16	335	823
Jun-18	175	16	9%	90.9%	143	7	5%	95.1%	36	1	3%	97.2%	58	0	0%	100.0%	59	0	0%	100.0%	29	8	265	773
Jul-18	210	11	5%	94.8%	154	1	1%	99.4%	29	2	7%	93.1%	61	0	0%	100.0%	64	0	0%	100.0%	28	13	200	759
Aug-18	169	5	3%	97.0%	152	4	3%	97.4%	39	3	8%	92.3%	54	0	0%	100.0%	65	0	0%	100.0%	35	15	252	781
Sep-18	201	12	6%	94.0%	149	5	3%	96.6%	36	3	8%	91.7%	64	0	0%	100.0%	60	0	0%	100.0%	26	8	218	762
Oct-18			####	#####			#####	#####			#####	#####			#####	#####	#DIV/0!			#####				0
Nov-18			####	#####			#####	#####			#####	#####			#####	#####	#DIV/0!			#####				0
Dec-18			####	#####			#####	#####			#####	#####			#####	#####	#DIV/0!			#####				0
Total #s	1655	105		93.7%	1381	51		96.3%	309	20		93.5%	519	1		99.8%	503	0		#####	223	105	2374	7069

= Exemption given

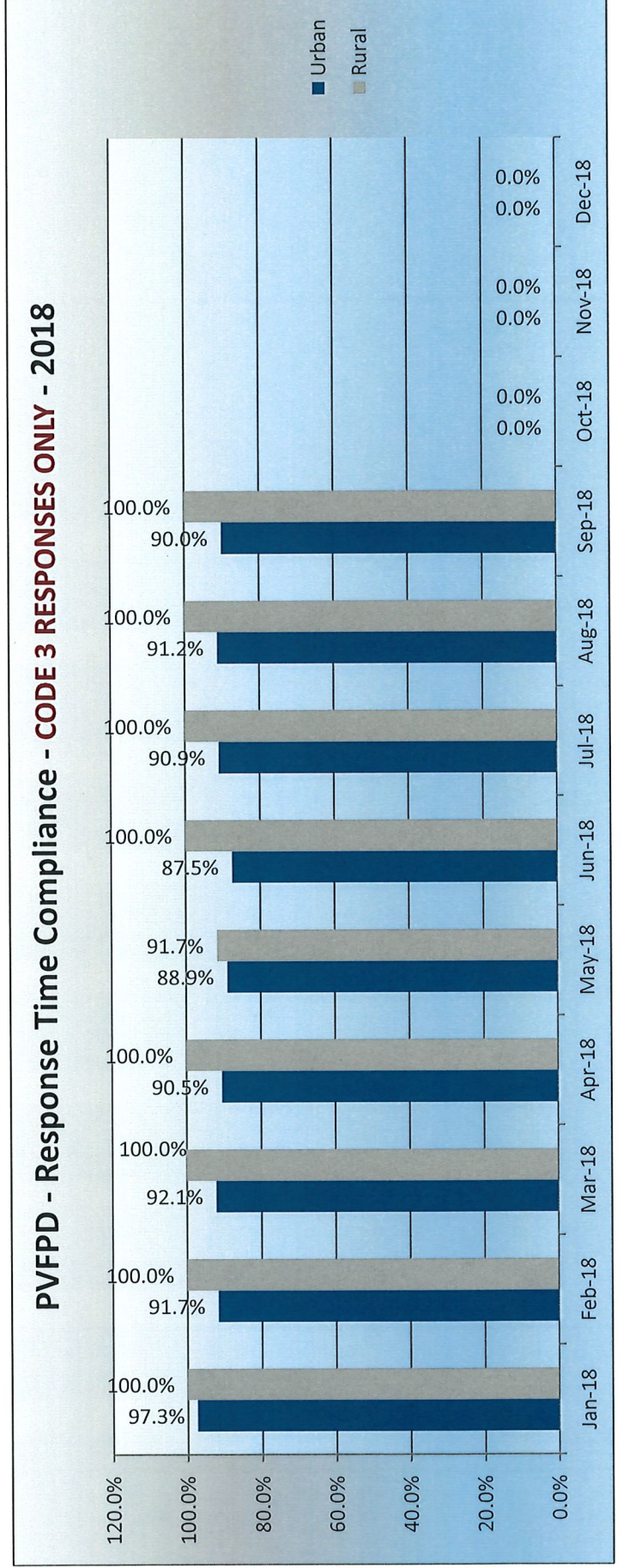
SNA - Response Time Compliance - CODE 3 RESPONSES ONLY - 2018



Penn Valley Fire Protection District - Response Time Compliance - 2018

PVFPD	Urban Code 3 (10 Min. 90% of the time)				Rural Code 3 (20 Min. 90% of the time)				Urban - Code 2		Rural - Code 2		ASAP All Calls	Mutual Aid	Total # of Calls	
	# of Calls	# Late	Late %	On Time %	# of Calls	# Late	Late %	On Time %	# of Calls	Avg. Response Time	# of Calls	Avg. Response Time	# of Calls	#	#	#
Month																
Jan-18	37	1	3%	97.3%	9	0	0%	100.0%	7	0:09:25	3	0:26:25	3	9	68	
Feb-18	36	3	8%	91.7%	4	0	0%	100.0%	12	0:00:00	0	NA	5	6	63	
Mar-18	38	3	8%	92.1%	15	0	0%	100.0%	15	0:10:30	1	0:08:52	3	7	79	
Apr-18	21	2	10%	90.5%	7	0	0%	100.0%	13	0:09:39	2	0:16:34	4	8	55	
May-18	36	4	11%	88.9%	12	1	8%	91.7%	14	0:08:22	4	0:15:07	5	14	85	
Jun-18	40	5	13%	87.5%	7	0	0%	100.0%	12	0:10:54	2	0:13:19	5	11	77	
Jul-18	44	4	9%	90.9%	8	0	0%	100.0%	12	0:07:43	2	0:28:15	5	7	78	
Aug-18	57	5	9%	91.2%	8	0	0%	100.0%	19	0:10:46	2	0:12:09	1	10	97	
Sep-18	30	3	10%	90.0%	6	0	0%	100.0%	6	0:10:27	2	0:11:40	1	4	49	
Oct-18			#####	#####			#####	#DIV/0!							0	
Nov-18			#####	#####			#####	#DIV/0!							0	
Dec-18			#####	#####			#####	#DIV/0!							0	
Total #s	339	30			76	1			110		18		32		651	

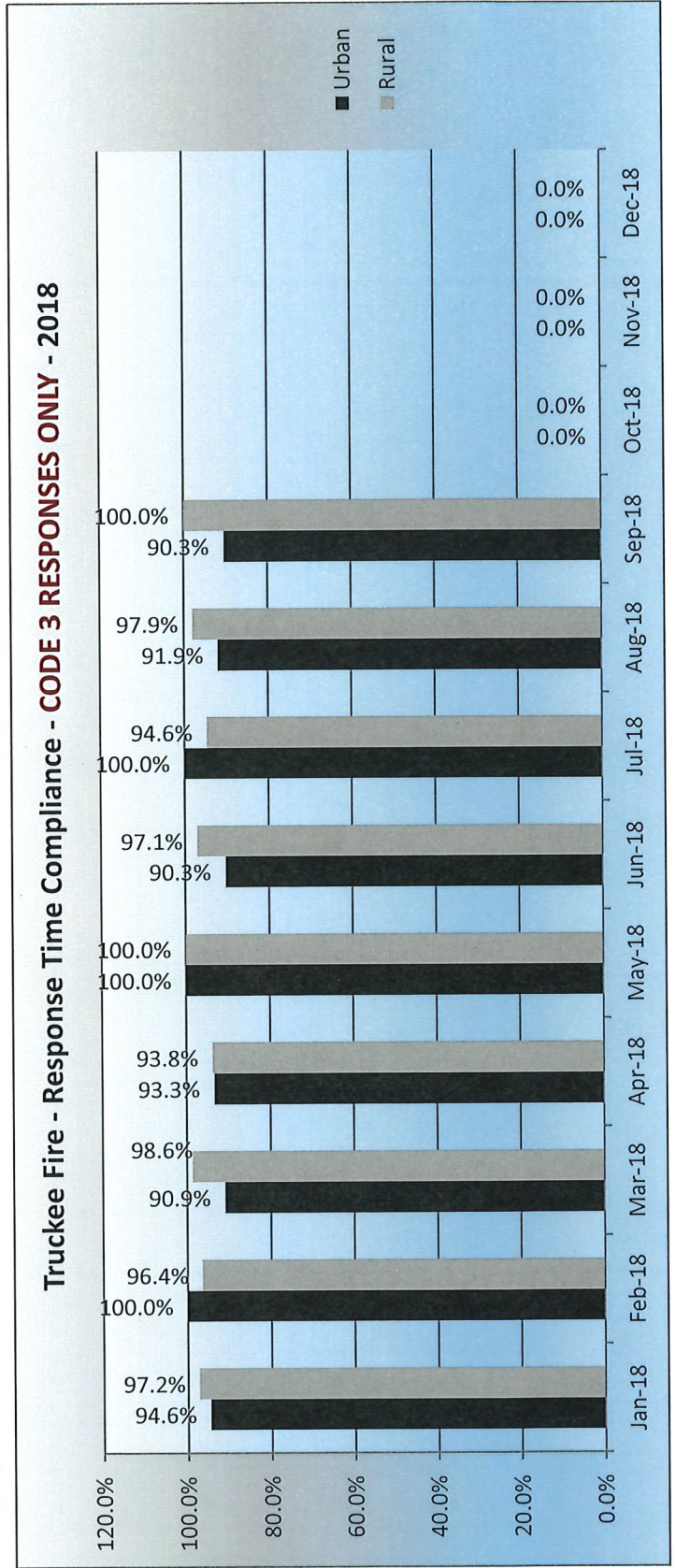
= Exemption given



Truckee Fire - Response Time Compliance - 2018

Truckee Fire	Truckee Town Limits - 10 Minute - Code 3				Truckee Rural - 20 Minutes - Code 3				Truckee Town Limits - Code 2		Truckee Rural - Code 2		ASAP ALL Calls	Total # of Calls
	# of Calls	Late %	On Time %	# of Calls	# Late	Late %	On Time %	# of Calls	Avg. Response Time	# of Calls	Avg. Response Time	# of Calls	Avg. Response Time	# of Calls
Month	37	5%	94.6%	72	2	3%	97.2%	14	0:07:42	14	0:11:17	6	143	
Jan-18	10	0%	100.0%	55	2	4%	96.4%	3	0:07:47	20	0:14:27	1	89	
Feb-18	22	9%	90.9%	71	1	1%	98.6%	5	0:06:28	25	0:14:48	11	134	
Mar-18	15	7%	93.3%	32	2	6%	93.8%	4	0:06:28	8	0:09:29	2	61	
Apr-18	16	0%	100.0%	21	0	0%	100.0%	7	0:07:03	3	0:11:06	11	58	
May-18	31	10%	90.3%	34	1	3%	97.1%	9	0:07:43	15	0:10:49	21	110	
Jun-18	38	0%	100.0%	74	4	5%	94.6%	6	0:06:16	17	0:11:52	17	152	
Jul-18	37	8%	91.9%	47	1	2%	97.9%	12	0:07:54	11	0:11:04	16	123	
Aug-18	31	10%	90.3%	33	0	0%	100.0%	9	0:06:59	6	0:11:12	23	102	
Sep-18		#####	#DIV/0!			####	#DIV/0!						0	
Oct-18		#####	#DIV/0!			####	#DIV/0!						0	
Nov-18		#####	#DIV/0!			####	#DIV/0!						0	
Dec-18		#####	#DIV/0!			####	#DIV/0!						0	
Total #s	237		94.1%	439	13		97.0%	69	0:05:22	119	0:08:50	108	972	

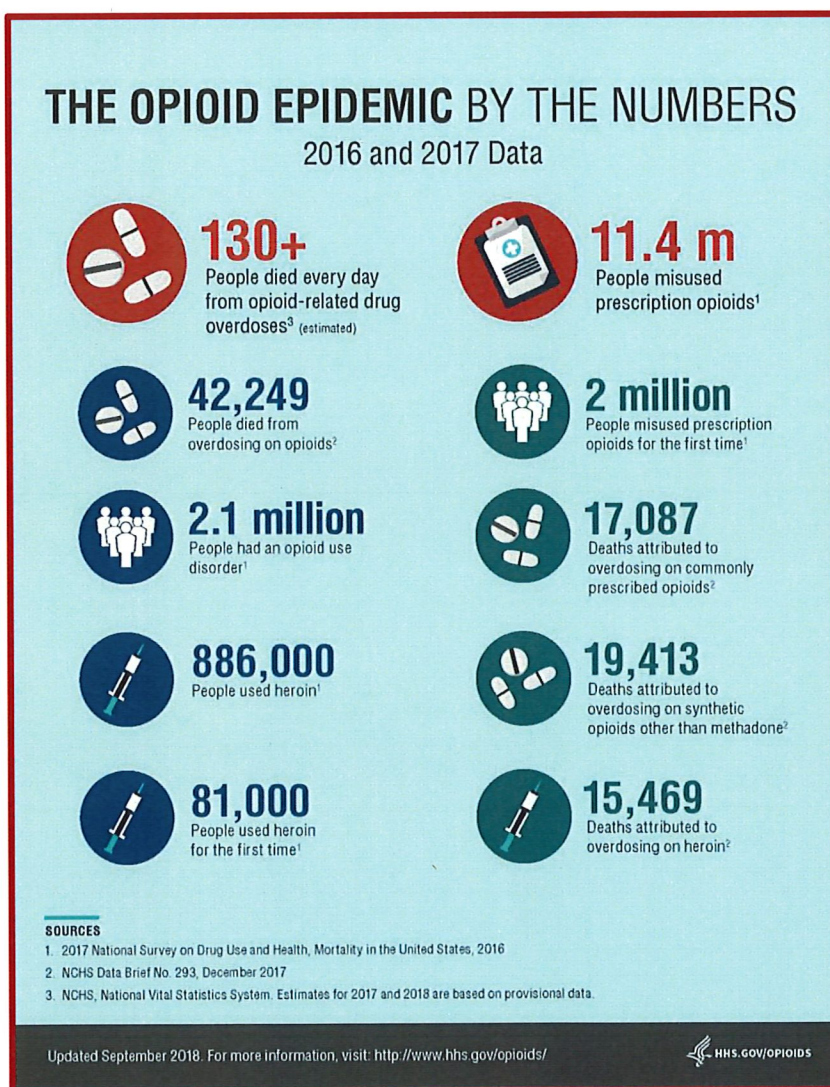
= Exemption given



Background & Purpose

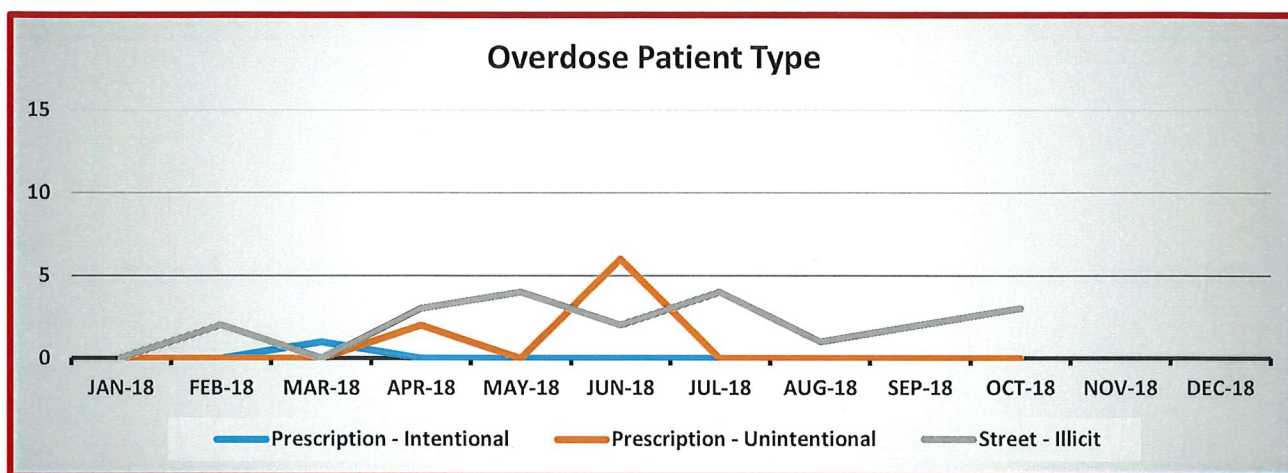
Every day, more than 115 people in the United States die after overdosing on opioids. The misuse of and addiction to opioids – including prescription pain relievers, heroin, and synthetic opioids such as fentanyl – is a serious national crisis that affects public health as well as social and economic welfare. The Centers for Disease Control and Prevention estimates that the total "economic burden" of prescription opioid misuse alone in the United States is \$78.5 billion a year, including the costs of healthcare, lost productivity, addiction treatment, and criminal justice involvement.

The purpose of this report is to provide timely, accurate and consistent data on the prehospital administration of naloxone by bystanders, law enforcement, fire department, and EMS personnel to suspected opioid overdose patients in the S-SV EMS ten (10) county region. Due to the unknown etiology of presenting signs and symptoms in some prehospital patients, naloxone is occasionally administered to patients who are subsequently determined to not be suffering from an opioid overdose. It should also be noted that EMS personnel do not make medical diagnoses and do not have access to laboratory tests needed to confirm an opioid overdose. As a result, S-SV EMS quality improvement personnel thoroughly review all patient records involving the prehospital administration of naloxone to identify/confirm patients with a high likelihood of an opioid overdose prior to including the data in this report.



Nevada County Prehospital Naloxone Administration

Population & Prehospital Naloxone Administration Overdose Patient Type Percentages				
Population	S-SV EMS Region Population %	Prescription - Intentional Pt. %	Prescription – Unintentional Pt. %	Street – Illicit Pt. %
99, 814	8.14%	2.56%	8.16%	8.54%



Population & Prehospital Naloxone Administration Overdose Patient Type Percentages												
Overdose Type	Jan	Feb	Mar	Apr	May	Jun	Jul	Aug	Sep	Oct	Nov	Dec
Prescription – Intentional	0	0	1	0	0	0	0	0	0	0		
Prescription – Unintentional	0	0	0	2	0	6	0	0	0	0		
Street – Illicit	0	2	0	3	4	2	4	1	2	3		

Overdose Patient Demographics						
Overdose Type	Female Pts # (%)	Male Pts # (%)	Female Avg. Age	Female Med. Age	Male Avg. Age	Male Med. Age
Prescription – Intentional	1 (100%)	0 (0%)	50 yo	50 yo	N/A	N/A
Prescription – Unintentional	3 (38%)	5 (62%)	73 yo	68 yo	69 yo	66 yo
Street – Illicit	5 (24%)	16 (76%)	29 yo	26 yo	32 yo	30 yo

Bystander, Law Enforcement & BLS Fire Department Prehospital Naloxone Administration Data			
Overdose Type	Bystander	Law Enforcement	BLS Fire Department
Prescription – Intentional	0	0	0
Prescription – Unintentional	0	0	0
Street – Illicit	1	3	0