

HHSA Services in Truckee

- Background/Baseline Data
- HHSA Service Overview
- Homelessness Update
- Partner Highlight



**NEVADA
COUNTY**
CALIFORNIA

**Health & Human
Services Agency**



Background/Overview

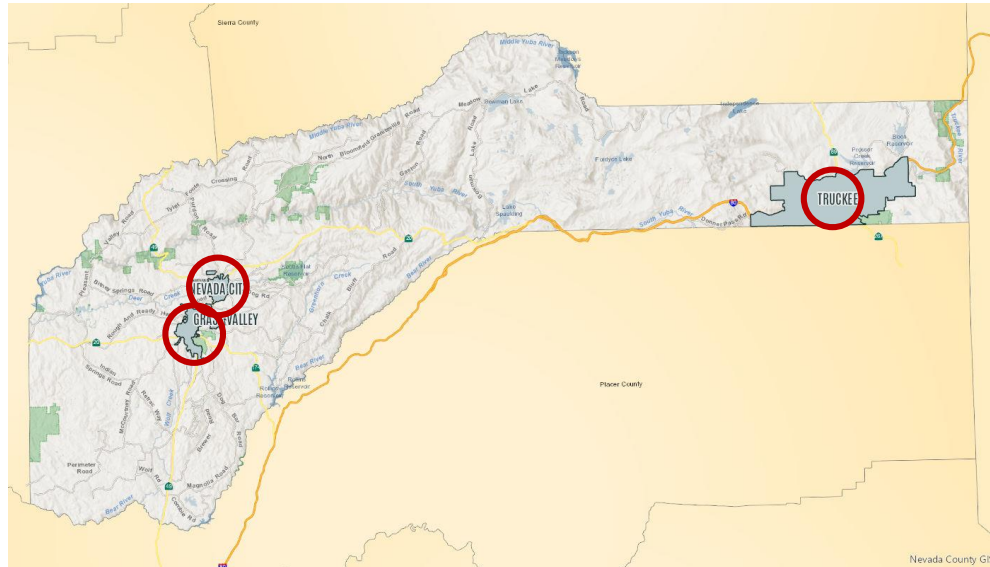
County vs. City Services

Based on Jurisdiction

- Transit
- Police
- Land Use/Building
- Public Works
- Housing/CDBG
- Etc...

County Only

- Jail/Coroner
- District Attorney
- Environmental Health
- Health & Human Services
- Etc...



HHSA Core Services

• Social Services

- Benefit Administration
- Child Welfare
- Adult Protective Services

• Behavioral Health

- Specific services to seriously mentally ill and people with SUD

• Public Health

- Communicable Disease, Health Officer, Vaccination, etc

• Child Support

- Establish and collect child support

• Probation

- Enforce court ordered Probation

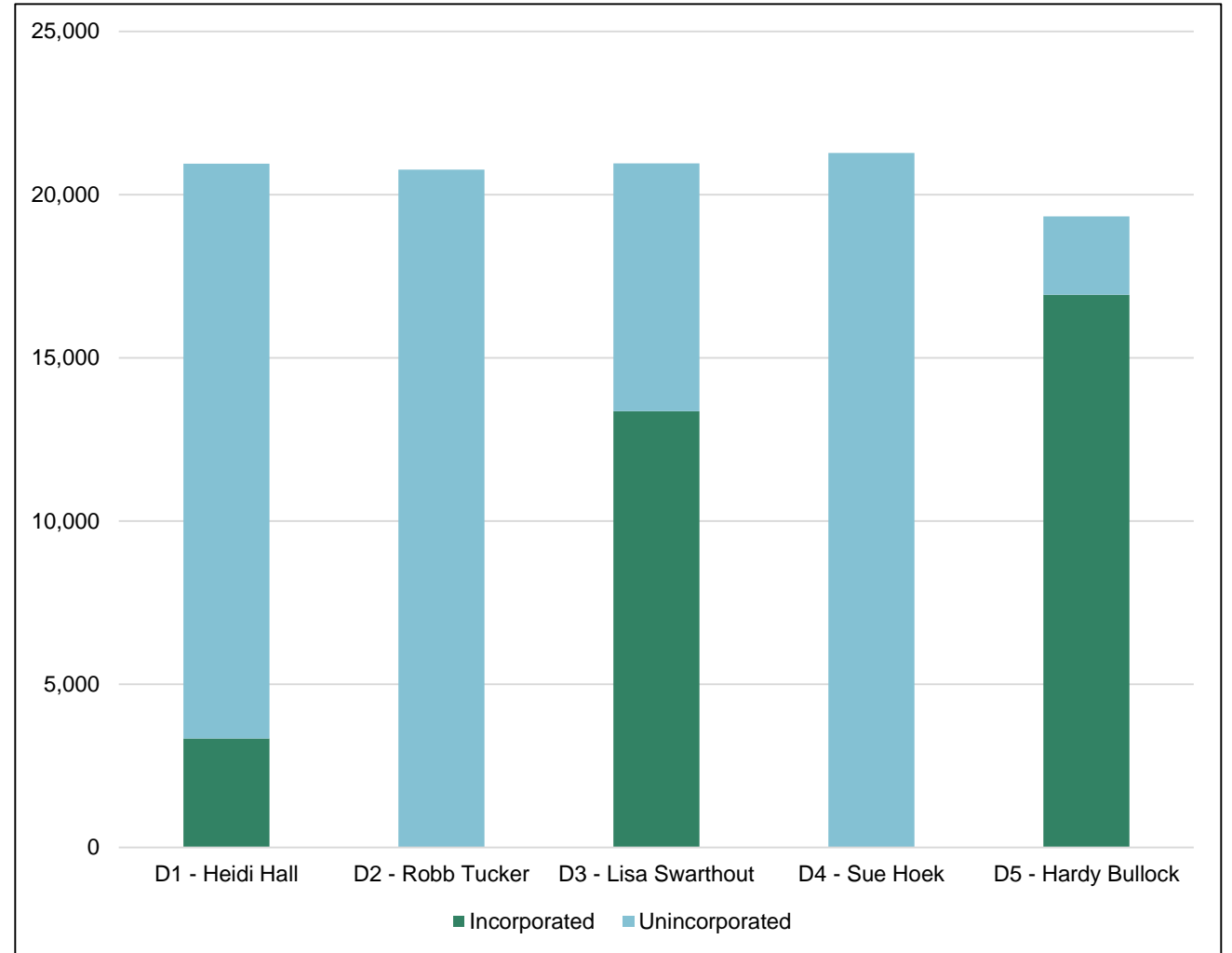
• Public Defender

- Indigent Defense

• Housing and Community Services

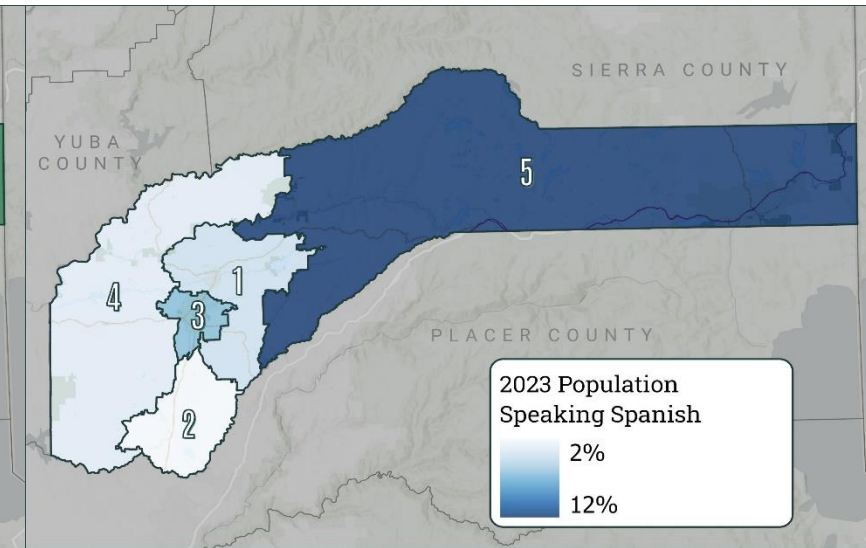
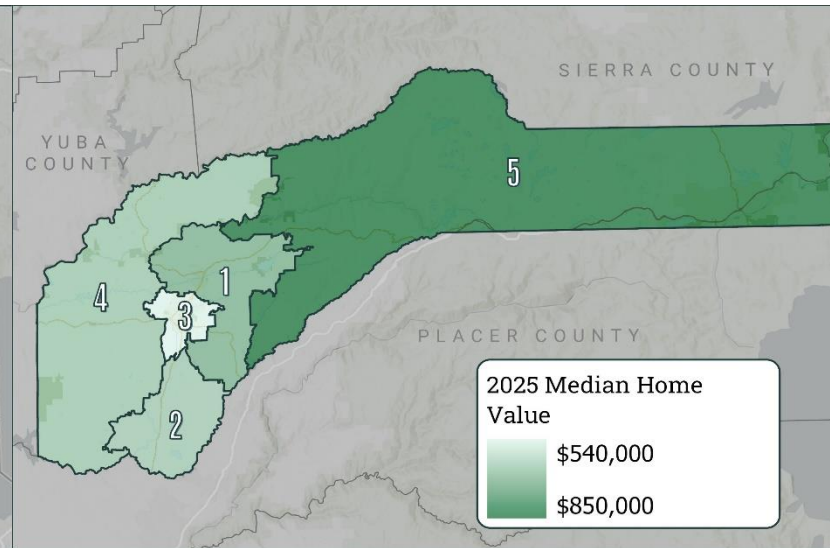
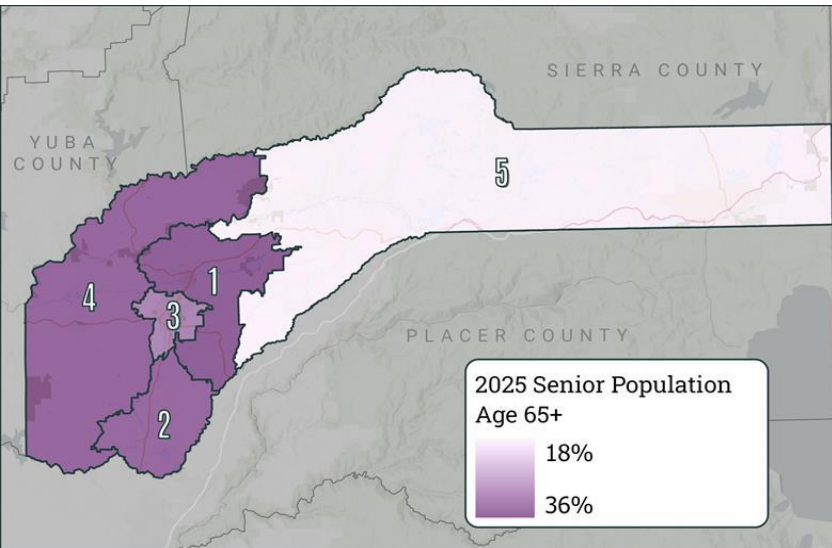
Incorporated/ Unincorporated by District

- **County Services can look very different by district**
- **For County/City services the population in City/Town boundaries is significant**
 - Perception of underserving
- **For County only services like HHSA, other factors are more significant, with some examples in the next slide.**



Key Differences Between Districts

SUPERVISOR	% Population 65+	% Population <18	% Living Below Poverty	% Household Income >\$200K	% Renters	Median Home Value	% Spanish Speaking
D1 - Heidi Hall	35.65%	13.83%	11.02%	12.63%	21.10%	\$ 706,738	4.14%
D2 - Robb Tucker	34.32%	16.21%	7.72%	16.62%	13.67%	\$ 646,468	2.10%
D3 - Lisa Swarthout	30.78%	16.75%	16.33%	7.43%	46.07%	\$ 542,468	6.33%
D4 - Sue Hoek	34.64%	15.55%	11.66%	12.88%	18.07%	\$ 652,603	3.17%
D5 - Hardy Bullock	17.60%	20.80%	9.14%	28.48%	30.56%	\$ 854,219	11.73%



HHSA Programs in Truckee

Barriers to Services in Truckee

Extreme Weather

Distance from County Seat

Language/Culture

Economy of Scale

Not everything can be everywhere

Housing Cost/Economy

Tahoe/Truckee vs. County Boundaries



How Services are Delivered in Truckee

- Integrated campus under a Program Manager
- Equivalent to 22.6 Full Time Staff at the Joseph Center
- Application processing centralized
 - Same wait times East/West
- 21 bilingual staff in HHSA (out of 25 Countywide)
- Contracted Service Providers such as:
 - Victor Community Services for Children's Wrap
 - Sierra Mental Wellness Group for Mobile Crisis
 - Etc
- Community Partnerships
 - Tahoe Forest Hospital
 - Sierra Community House
 - Etc



Info on recent expansion

Expanding Services access to services in Truckee has been a priority for Supervisor Bullock and County Staff

- Increased Staff by over 50%
- Contracted for Homeless Outreach, Prevention and Rapid Rehousing
- Hired a local Child Welfare Worker
- Contracted with Victor Family Services for wrap-around Behavioral Health services to families and children
- Implemented 24/7 Mobile Crisis services
- Leaned into community Partnerships such as Sierra Community House
- Co-leading regional homelessness planning

HHSA Staffing in Truckee

Department	18/19	25/26	Change	% Change
HHSA Admin	2.50	4.00	1.50	60%
Behavioral health	2.20	4.70	2.50	114%
Social Services	3.00	5.50	2.50	83%
Public Health	3.10	4.40	1.30	42%
Probation	3.00	3.00	0.00	0%
Public Defender	1.00	1.00	0.00	0%

Mobile Crisis Team

24/7 Services

ARE YOU STRUGGLING?
DO YOU NEED SUPPORT TO COME TO YOU?

Please call:
530-265-5811

Tahoe Truckee Regional Homeless Action Plan

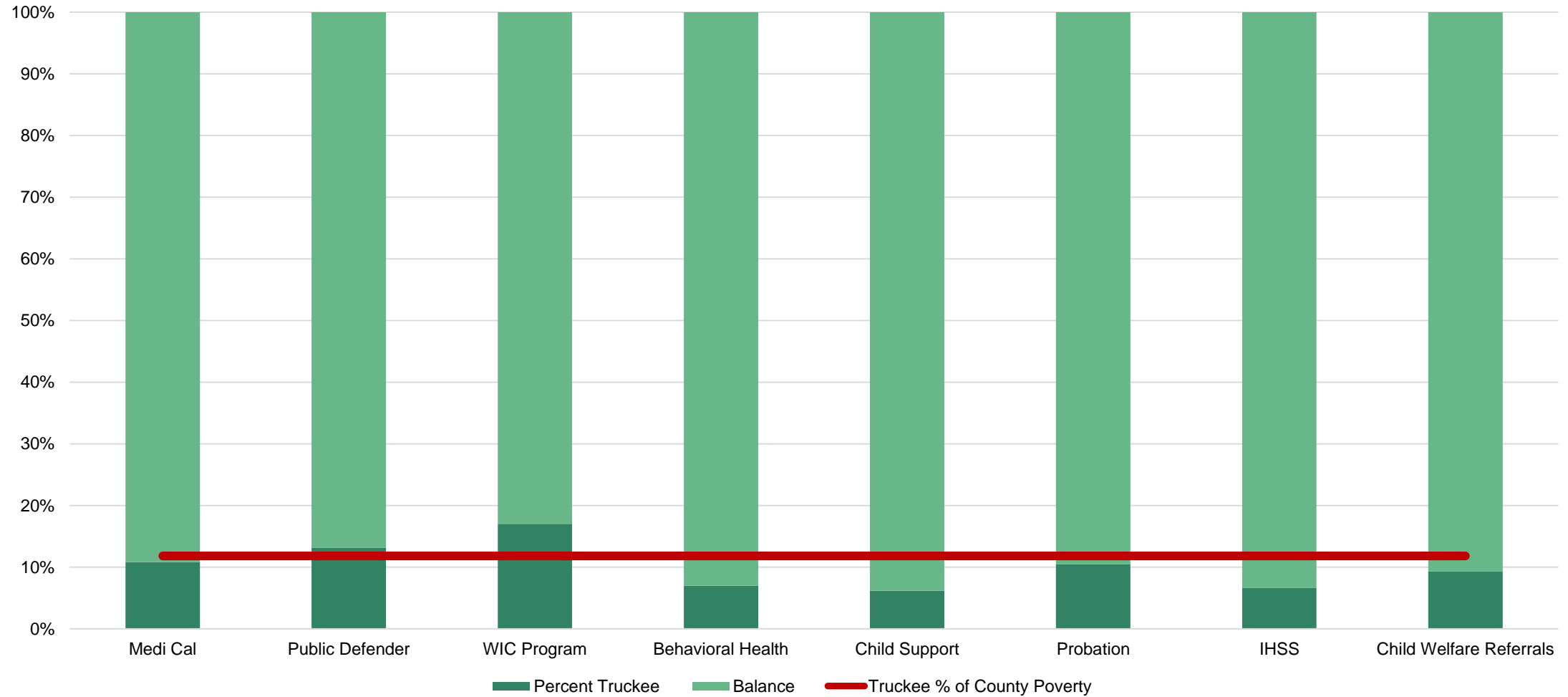
A Collaborative Roadmap to End Homelessness in the Tahoe Truckee Region

DRAFT as of January 13, 2025

Developed by the Tahoe Truckee Homeless Advisory Committee
 A Project of the Homeless Resource Council of the Sierras with funding from the Tahoe Truckee Community Foundation

Current HHSA Truckee Caseloads

Truckee Proportion of select HHSA Programs



Homelessness Update

Homelessness History and Challenges

History

- Grass Roots Shelter – Church of the Mountains
- Sporadic Support from Counties/Hospital/Town
- During COVID expanded with one-time funds to include day services
- Tahoe/Truckee Homeless Advisory Committee forms/develops plan
- Day Center/Shelter lost location and provider
- County stood up a one-time shelter
- Attempt at PSH Expansion
- Tahoe/Truckee Homeless Action Committee

Challenges

- Location – what will work for the community and the services
- Provider – who will do the work, and what type of work will they do?
- Jurisdiction – Town Borders, Board Priority
- Roles and Responsibilities – Some gaps are not clearly in anyone's lane
- Need for community input/support
- Small numbers, severe impact
- Models and how they align with funding

What's Happening and What's Needed

Homeless Outreach support
equivalent to West County

Ten beds of PSH on the Horizon

- **Pacific Crest Commons**
 - 55 Apartments, 10 of which PSH
 - Income Restricted
 - County Contributions through No Place Like Home and General Fund
 - Recent Groundbreaking
 - On track to open December 2026

Focus on critical unmet Need:

- **Navigation/Shelter**
 - Day Resources
 - Interim Housing
 - Extreme weather shelter

Pacific Crest Commons



Partner Highlight

Sierra Community House and the Promotora Program

Questions

