



NEVADA COUNTY  
CALIFORNIA

**Recreation &  
Resiliency  
Master Plan**

# Strengthening Our Communities & Safeguarding Nature

---

Board of Supervisors Presentation | May 2024

# Countywide Recreation Vision

Nevada County strengthens communities and safeguards nature through a **connected and coordinated system** of parks, open space, rivers, lakes, trails, and facilities. **Working together**, land managers, residents, volunteers, and users seek to **enhance recreation access and opportunities** while **stewarding natural, cultural, and agricultural resources**.



Enhance  
Recreation  
Access



Improve  
Health & Safety



Preserve  
Natural Resources



Support  
Economic Growth

# Co-Benefits of Recreation

- Economic vitality
- Arts & culture
- Agricultural resources
- Health & wellness



# Informed through Input

## Stakeholder Conversations

- Topical Focus Groups
- Interviews and Discussions
- Recreation Coalition
- South Yuba River Public Safety Cohort
- Convene, Champion, & Catalyze
- Working Group and Core Team



*Over 150+ organizations engaged county-wide over 18 months (pgs. 80-81)*

# Informed through Input

**First Survey Window:**  
Recreation Needs, Barriers, & Goals  
March 27 – April 16, 2023

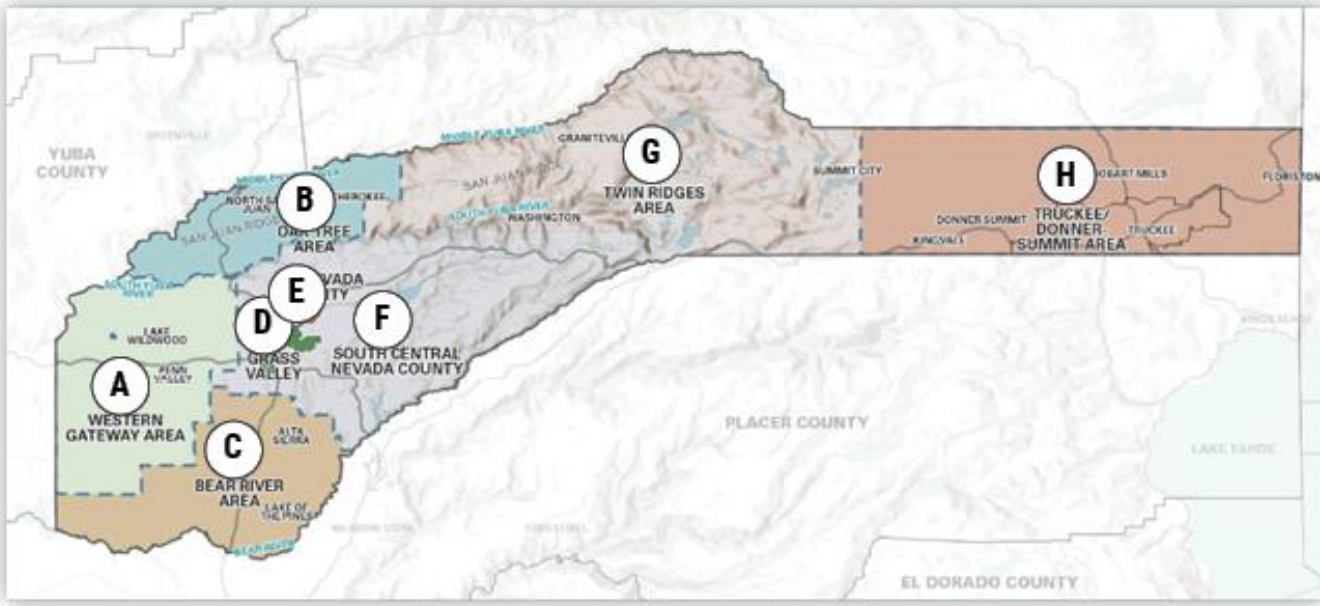
**Second Survey Window:**  
Project Recommendations  
June 1– July 11, 2023

**Third Survey Window:**  
Master Plan Support & Role of the County  
March 12- March 24, 2024

**Total Responses: 1,773**  
• Responses from all areas

**Total Responses: 822**  
• Responses from all areas

**Total Responses: 722**  
• Responses from all areas



- WESTERN & CENTRAL NEVADA COUNTY**
- (A) Western Gateway Area
  - (B) Oak Tree Area
  - (C) Bear River Area
  - (D) Grass Valley
  - (E) Nevada City
  - (F) South Central Nevada County
  - (G) Twin Ridges Area
- EASTERN NEVADA COUNTY**
- (H) Truckee/Donner-Summit Area



# Chapter 7: Eight Focus Areas

## Recreation Focus Areas



**Community &  
Regional Park  
System**



**Recreation  
Outposts**



**Towns to Towns  
Trail System**



**Recreation &  
Resiliency Hub  
Network**



**River Access  
Management**



**Destination Donner  
Summit**



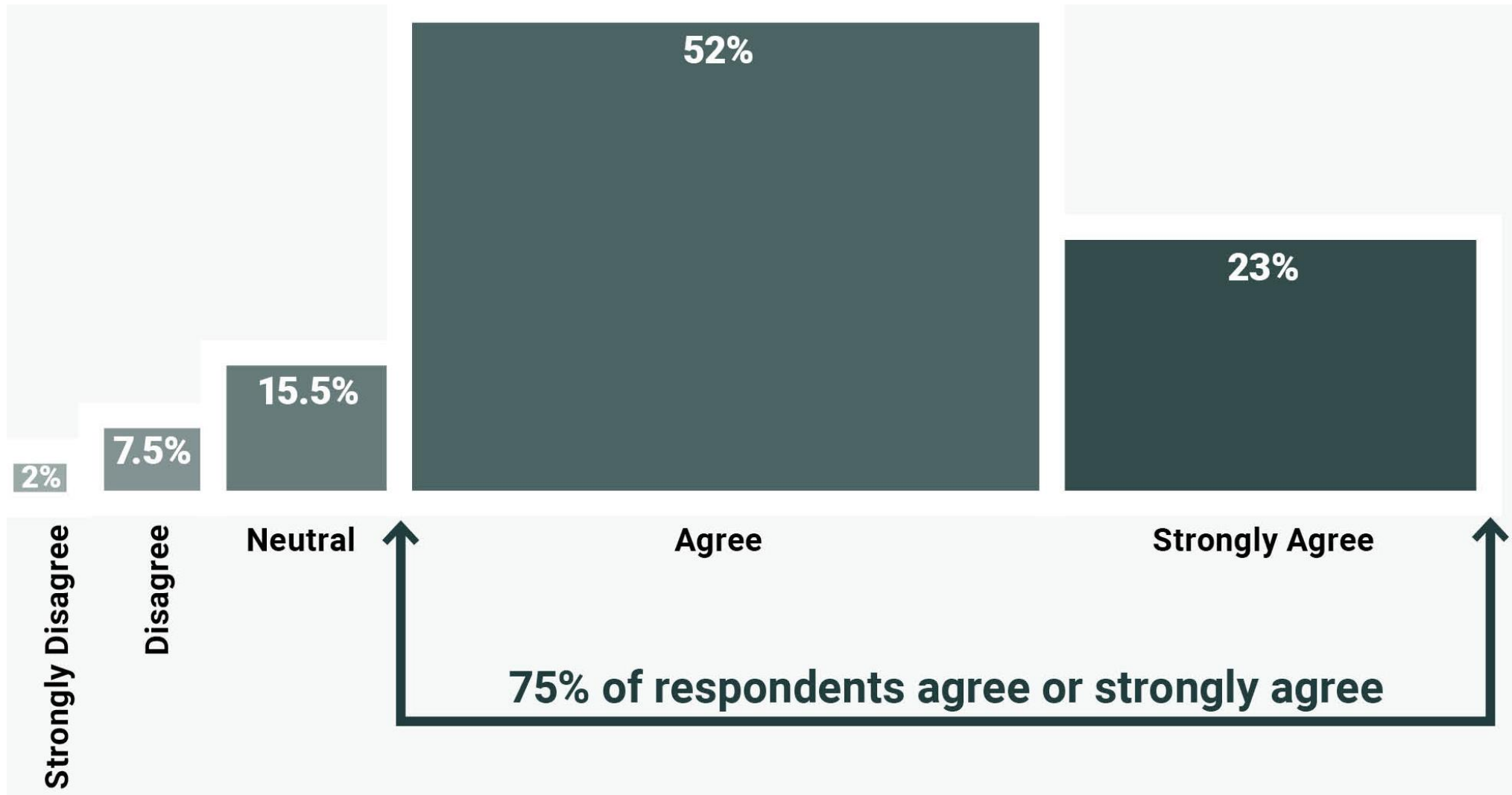
**Sustainable  
Recreation &  
Communications**



**One Centralized Hub for  
Recreation Resources &  
Programming**

# Input on the Master Plan

*Question: How much do you agree or disagree with the Recreation & Resiliency Master Plan  
8 Focus Areas for recreation improvements?*



# Input on the Master Plan

*Question: What are your top 3 priorities out of the 8 Focus Areas for recreation improvements?  
(select 3)*

Shows percent of total responses or how frequently the Focus Area was selected as 1 of a top 3 priority.  
(Total is greater than 100%.)



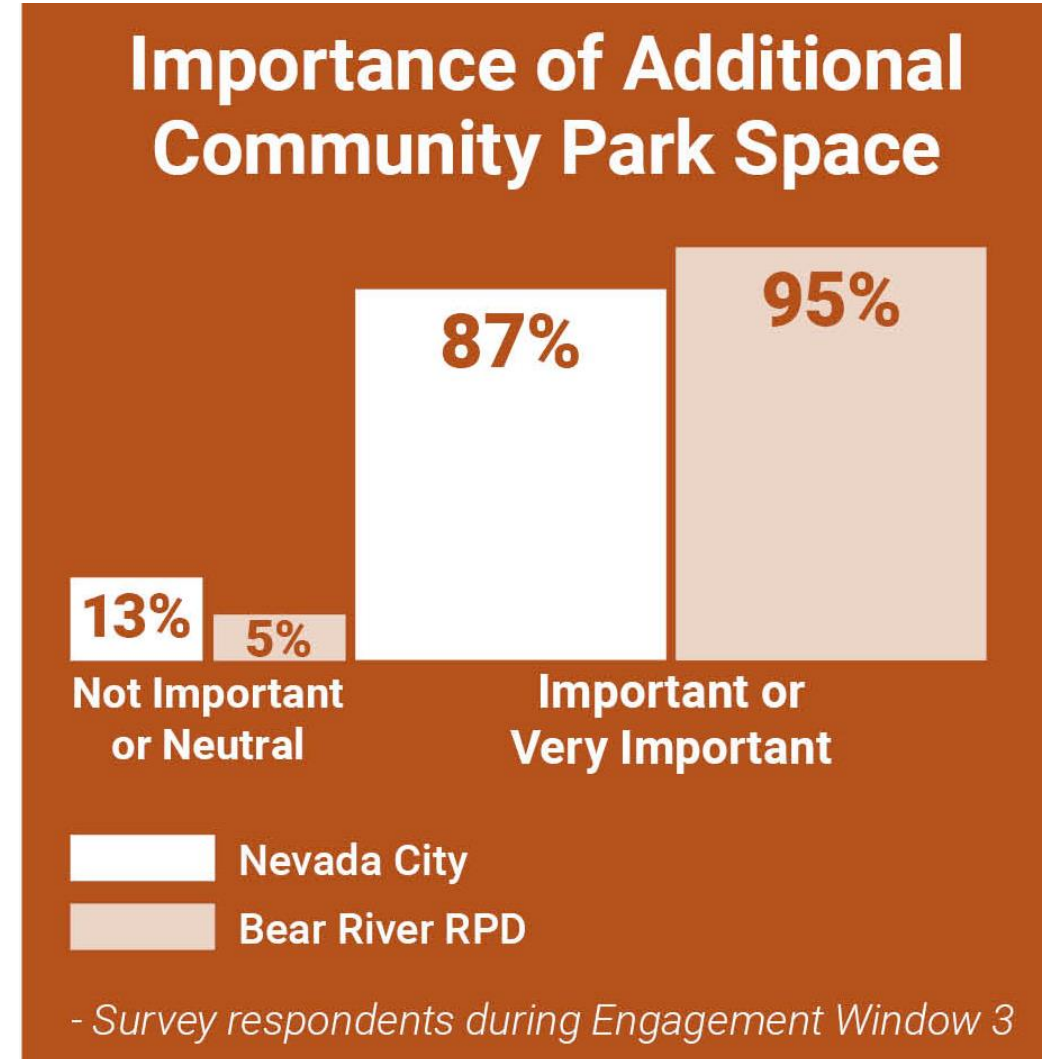




# Community & Regional Park System

## Highlights (pg. 169-180)

- Provide a new regional park for South County residents to meet need for regional and local park access
- Continue to enhance facilities at existing parks
- Provide playgrounds or gathering spaces, where appropriate
- **Implementation:**
  - Specific for each district
  - School district bonds, grants, AB1600





# Recreation & Resiliency Hub Network

## Highlights (pg. 205-216)

- Maximize use and function of existing facilities (leverage private and non-profit partnerships)
- Identify enhancements to allow facilities to function during emergencies or disruptions (e.g., cooling or warming centers, clean air)
- **Implementation:**
  - Existing and planned facilities evaluation
  - Grants - PG&E Resilience Hub Grant, CA Strategic Growth Council, Building Resilient Infrastructure & Communities (BRIC), etc.



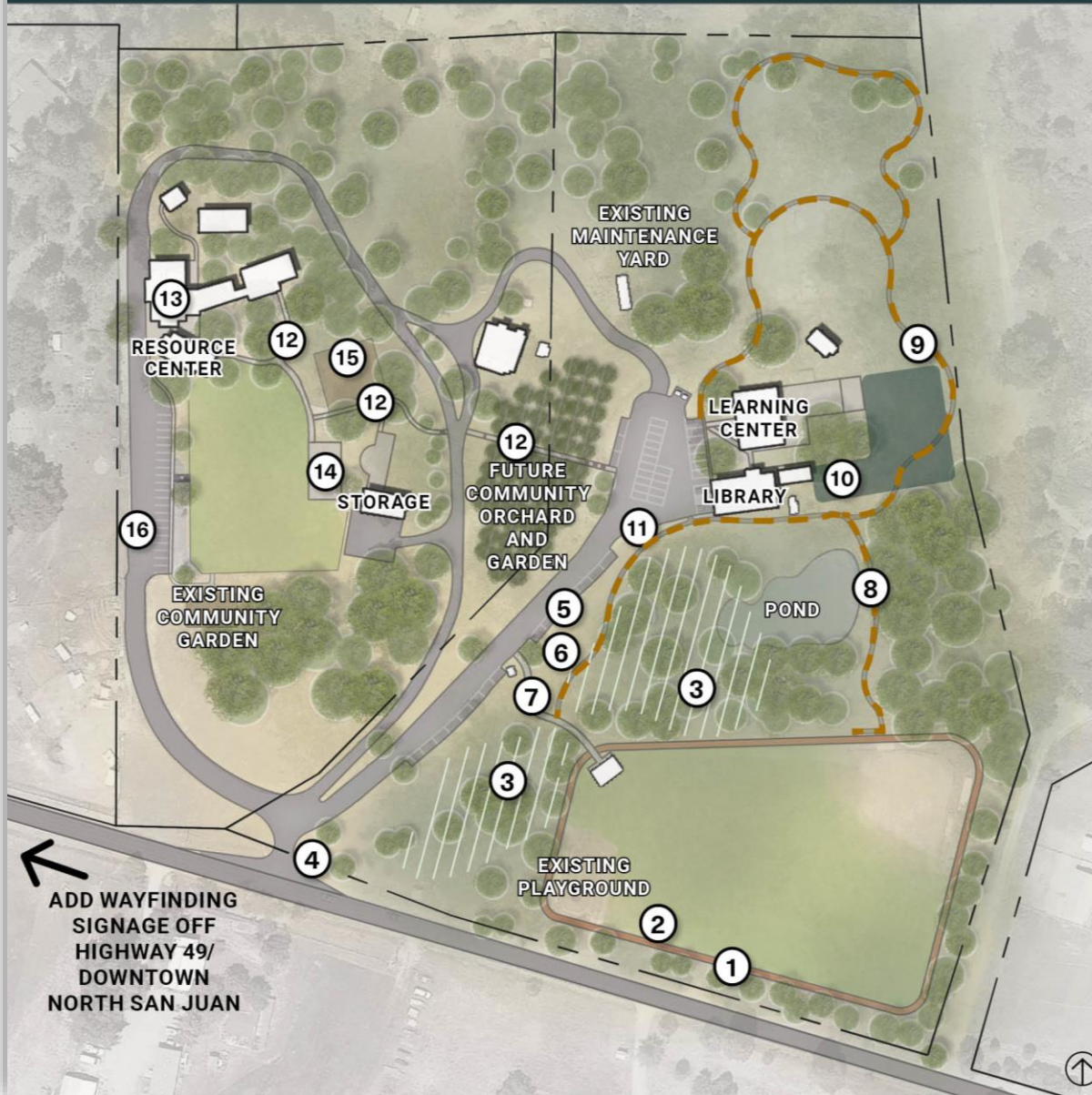
*Oak Tree Park Facility with San Juan Ridge Community Library, adjacent to Twin Ridges*





# FEATURED PROJECT: OAK TREE – TWIN RIDGES

## CAMPUS OAK TREE COMMUNITY PARK MASTER PLAN



- ① RENOVATE AND REPLACE TRACK WITH STABLE SURFACING
- ② IMPROVE FIELD DRAINAGE
- ③ RESTORE HABITAT AND REMOVE INVASIVE PLANTS WITH ENHANCED VISUAL ACCESS TO THE POND
- ④ ENHANCE SIGNAGE AND WAYFINDING
- ⑤ FORMALIZE PARKING AND PROVIDE ADA PARKING SPACES
- ⑥ RELOCATE PORTABLE RESTROOM
- ⑦ IMPROVE ACCESSIBLE PATH
- ⑧ EVALUATE OPPORTUNITY TO INCORPORATE POND OVERLOOK AT BRIDGE STRUCTURE
- ⑨ DEVELOP CULTURAL INTERPRETIVE TRAIL WITH SIGNAGE AND SEATING
- ⑩ EXPAND OUTDOOR PROGRAMING
- ⑪ ORGANIZE PARKING LAYOUT WITH PAVING AND STRIPING
- ⑫ REPLACE STAIRS AND WALKWAY FOR IMPROVED CONNECTION BETWEEN FACILITIES
- ⑬ ADDRESS DEFERRED MAINTENANCE OF BUILDINGS
- ⑭ RENOVATE AND REPLACE BASKETBALL COURT
- ⑮ RENOVATE AND REPLACE PLAY EQUIPMENT (AGES 3-5)
- ⑯ PAVE/IMPROVE ROADWAY TO ALLOW PEDESTRIAN AND BIKE CIRCULATION



# FEATURED PROJECT

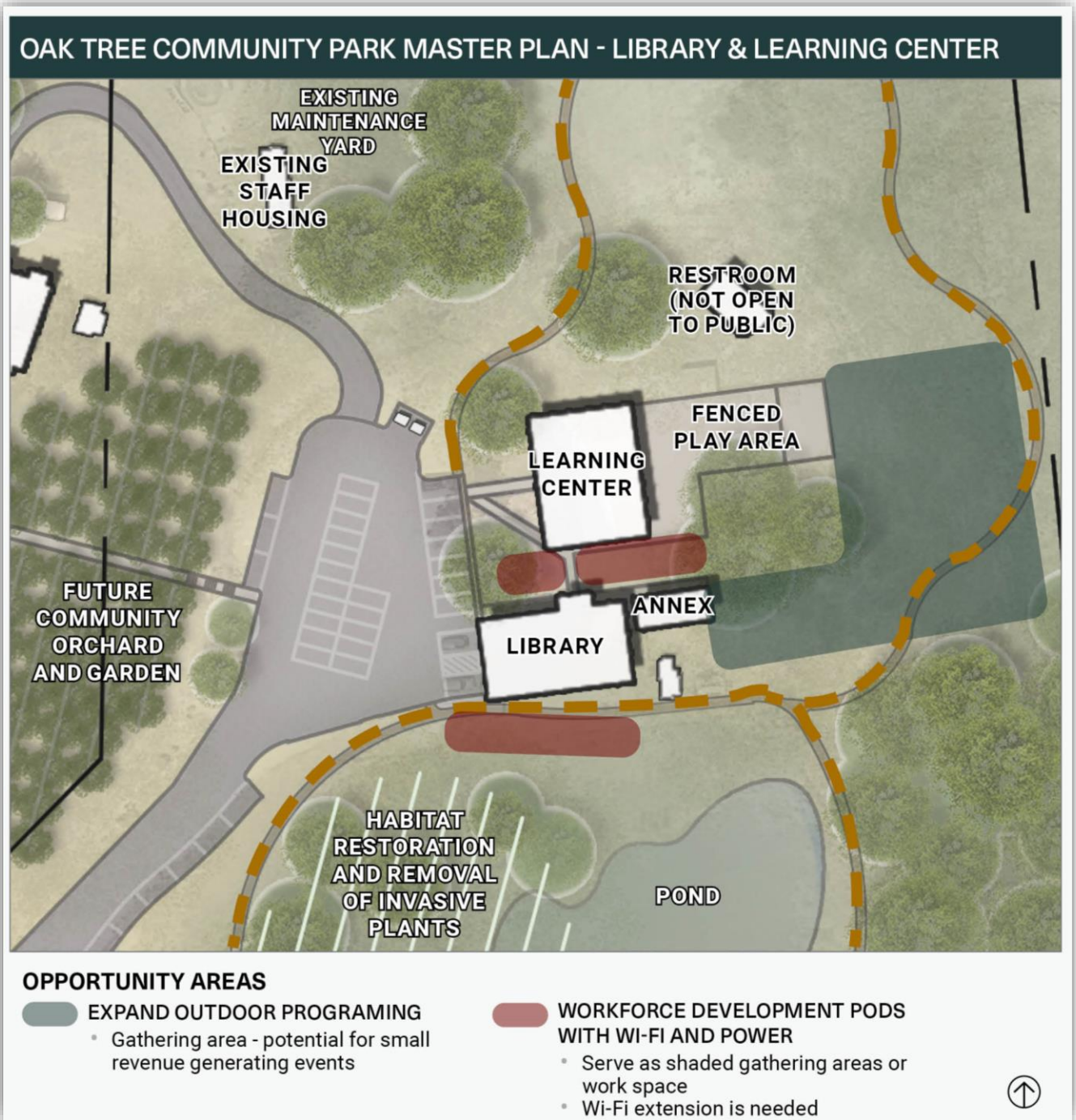
## cont.

### Readiness Check

- Collaboration between partners
- Site adjacency
- Joint assets
- Community need
- Complementary resources
- Other

#### • Implementation:

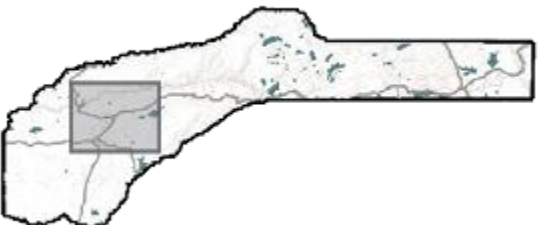
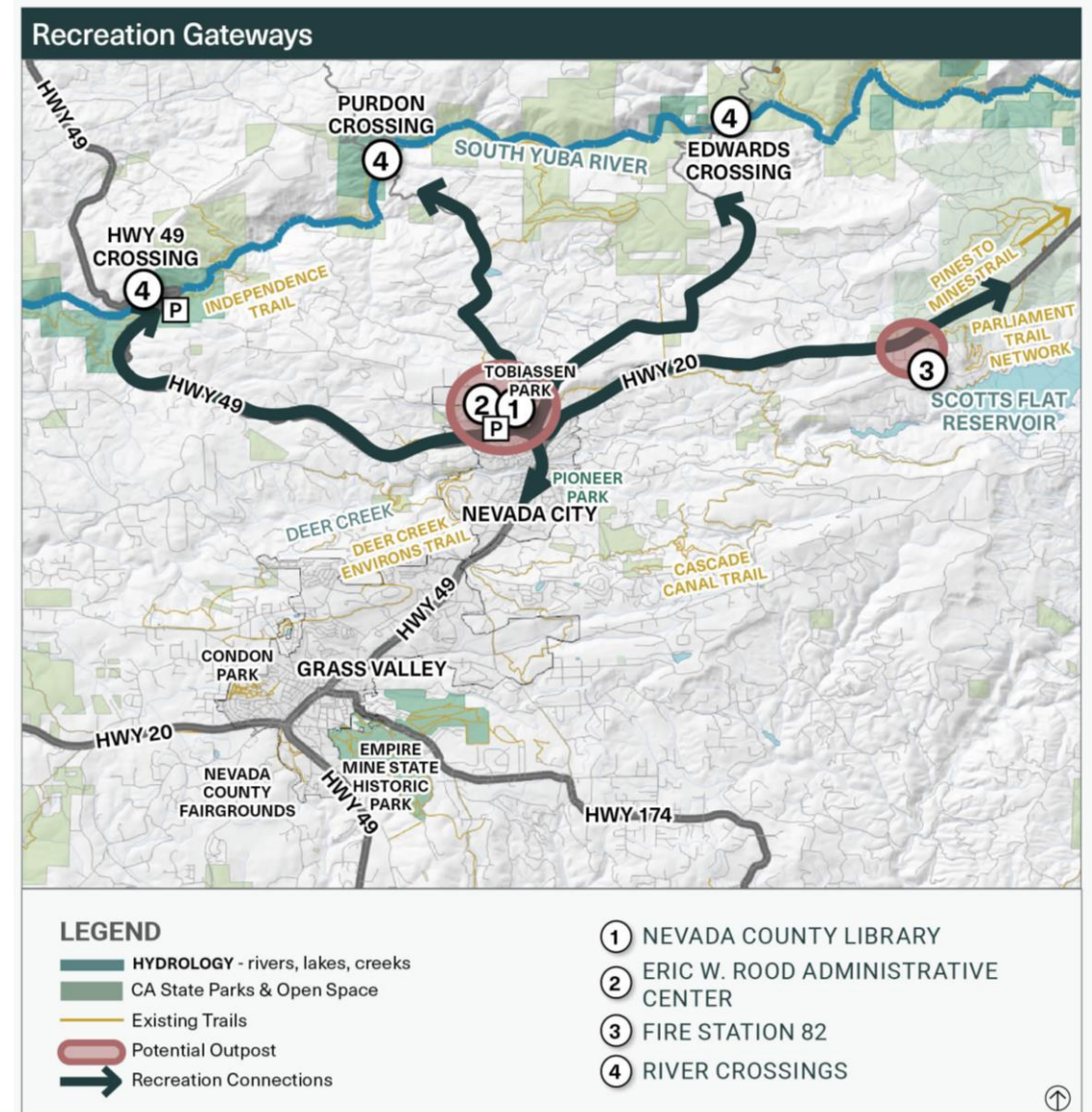
- Prop 64 Grant
- Measure A Bond



# Recreation Outposts

## Highlights (pg. 181-188)

- Coordinate facility and transportation improvements with recreation access enhancements
- Focus nodes of visitor/stewardship information at gateway locations
- Use partnerships to host ambassadors and/or recreation resources at facilities
- **Implementation:**
  - US Forest Service Visitor Center design considerations
  - Rood Center improvements
  - Station 82 parking and signage





# Towns to Towns Trail System

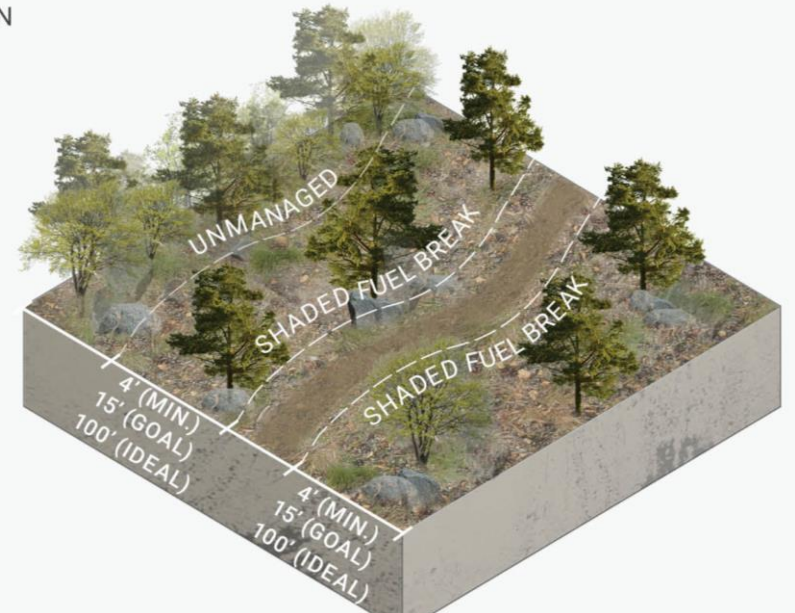
## Highlights (pg. 189-204)

- Connected system of paved and natural surface trails
- Connect to key community destinations (e.g., parks and schools)
- Link communities (e.g., Grass Valley to Nevada City)
- Regional trail connectivity (e.g., Pines to Mines Trail)
- Coordinate with the Active Transportation Plan
- Design to minimize user conflicts



Trails Within a Shaded Fuel Break

AXON

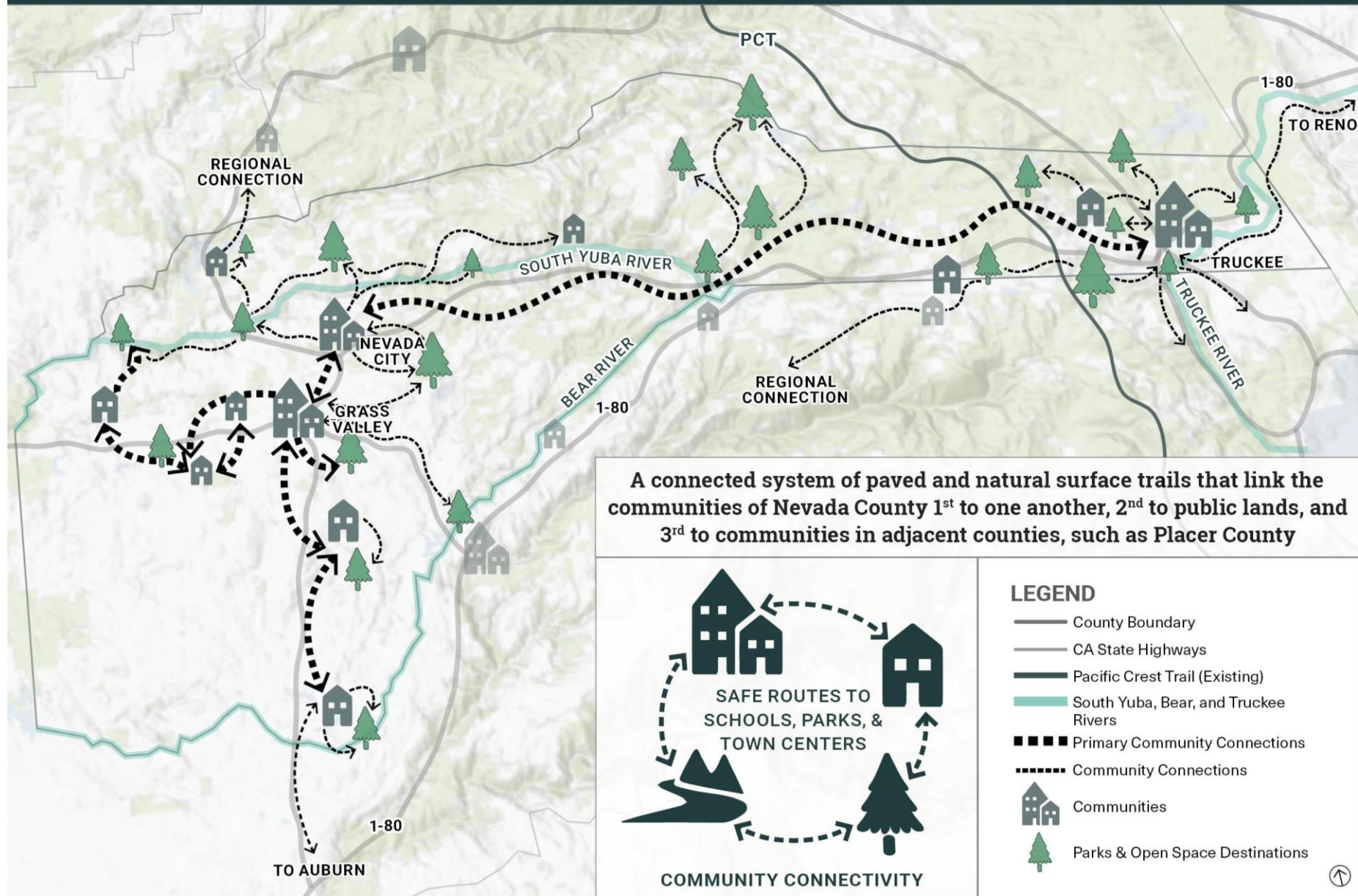




## Implementation:

- Interagency partnership leveraging resources for trail planning, maintenance, and trailhead needs
- Advance projects underway
- Nexus study update

## Vision of Town to Towns Trail Connectivity



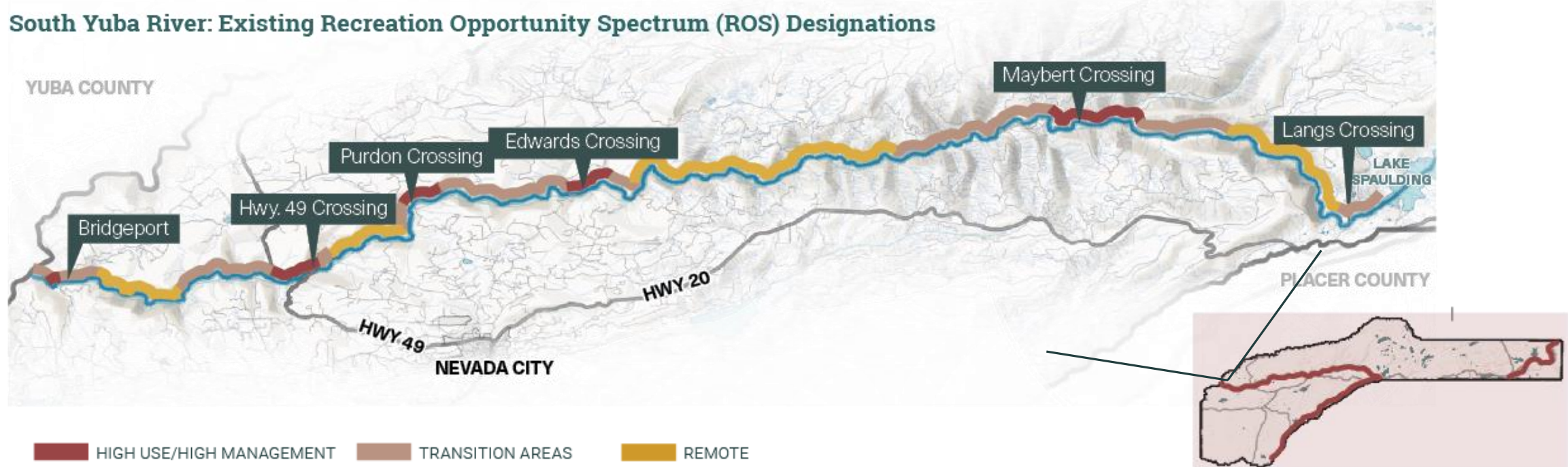


# River Access Management

## Highlights (pg. 217-244)

- Bear, South Yuba & Truckee Rivers – *with implementation specific to each*
- Coordinate system of parking, restrooms, trash receptacles, and signage
- Shift use to areas with appropriate facilities & access
- Update management plan and action items
- Include long-term adaptive management strategies

South Yuba River: Existing Recreation Opportunity Spectrum (ROS) Designations





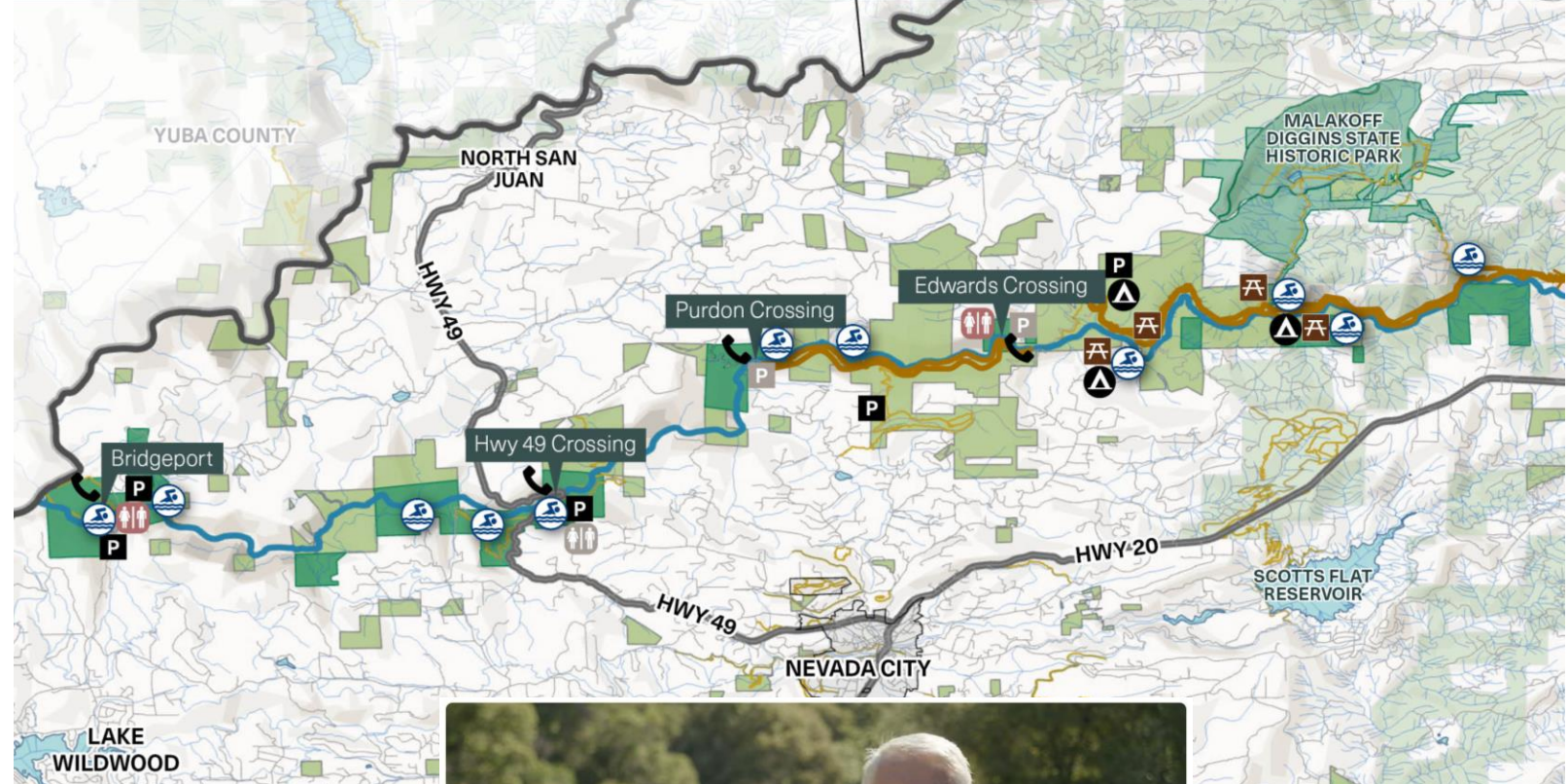


# FEATURED PROJECT: SOUTH YUBA RIVER MGMT PLAN

## Implementation:

- IFNF grant (pending)
- WCB Public Access Program
- Potential governance structures
- Advocacy
- Ambassador programs
- South Yuba River Public Safety Cohort

South Yuba River: Existing Conditions Enlargement



Yuba River Safety - Stay Out, Stay Alive

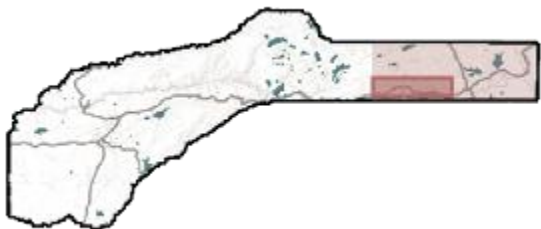
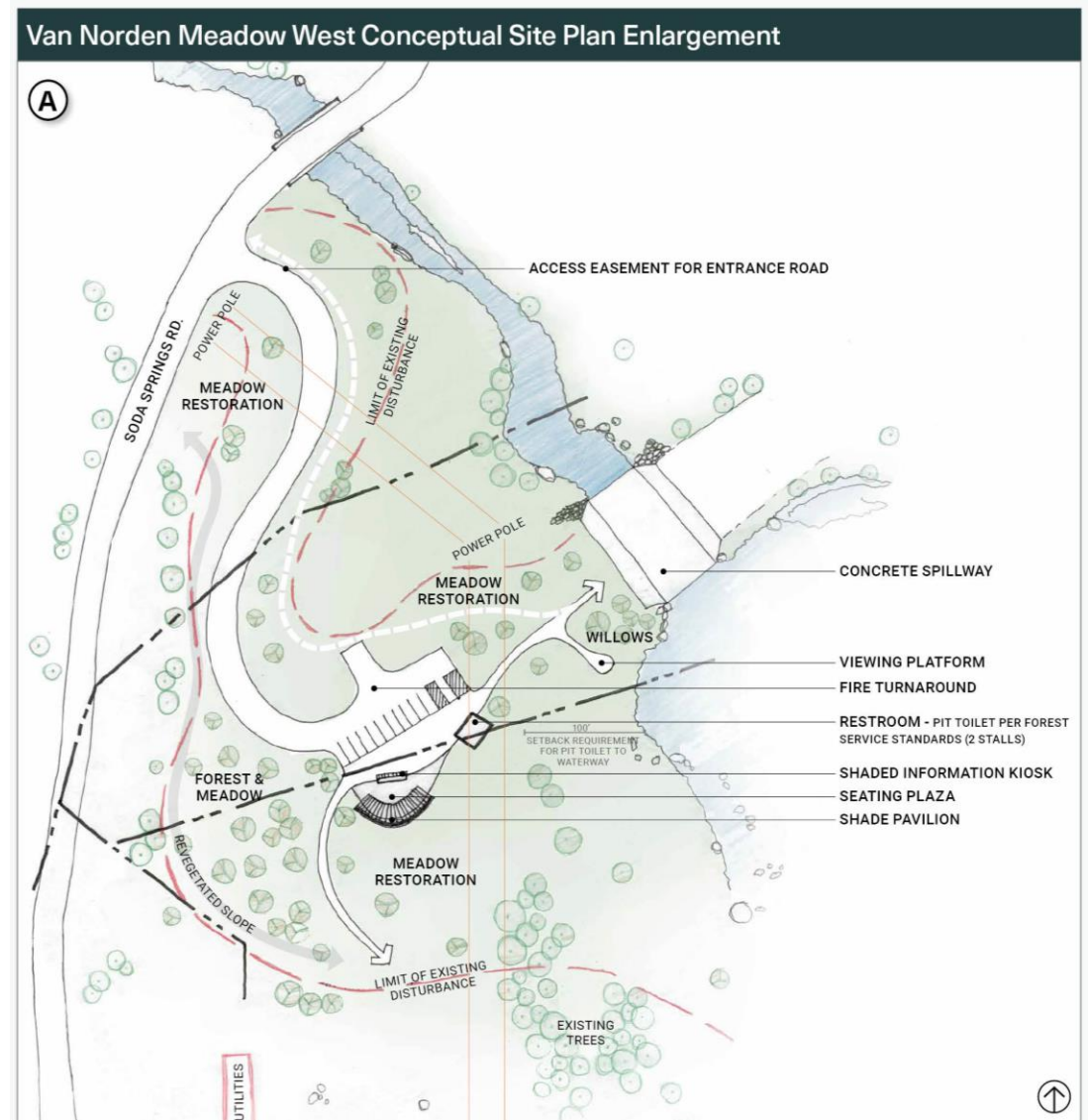


# Destination Donner Summit

## FEATURED PROJECT

### Highlights (pg. 245-256)

- Develop visitor center, trailheads, restroom facilities, and educational information
- Support restoration and fuels reduction in critical headwaters
- Provide summer and winter recreation access facilities
- **Implementation:**
  - Trailhead planning and development
  - Visitor center and OVFS funding





# Sustainable Recreation & Communications

## Highlights (pg. 257-268)

- Develop a coordinated and consistent signage strategy for trail wayfinding
- Promote sustainable recreation countywide across all public lands
- **Implementation:**
  - Visit Truckee Tahoe's Stewardship Plan
  - Ambassador programs
  - OVSF projects – e.g., South Yuba River mile markers, Truckee Trails, etc.
  - Nexus with Towns to Towns Trail System, River Access Mgmt focus areas





# One Centralized Hub for Recreation Resources & Programming

## Highlights (pg. 269-280)

- Shared platform/Recreation Hub page to find program and play opportunities
- Convene annual Recreation Fair to promote resources, build volunteer base, and increase access to services
- Expand and leverage Recreation Coalition for aggregating Hub content, event planning, and resources
- Sustainable funding and administrative support for western recreation & park districts



32  
0%

of survey respondents said it is **somewhat** or **very difficult to find information** about recreation in Nevada County.





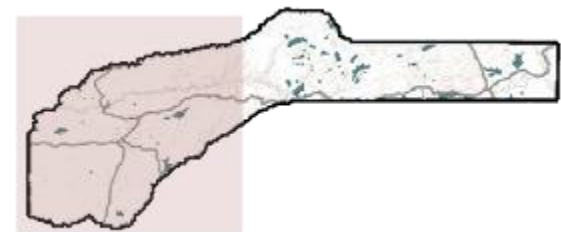
# One Centralized Hub for Recreation Resources & Programming

## Implementation:

- Recreation Coalition momentum
- Recreation Fair planning
- School District Bonds – current/proposed
- Engaged volunteers, local businesses and affinity groups
- In-kind & community support



*Image credit: Friends of Western Gateway Dog Park*



# Funding & Prioritization

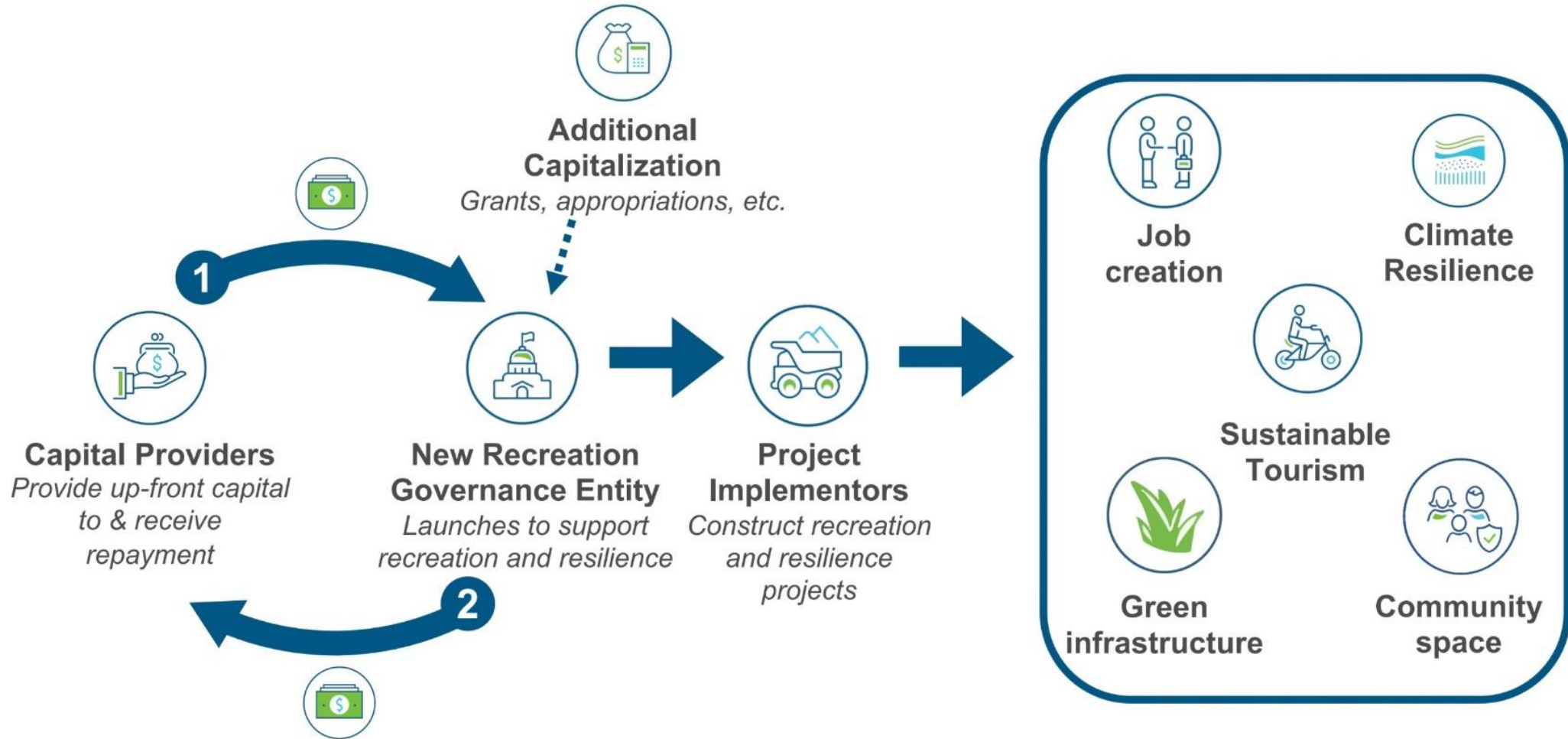
## Chapter 8 Action Plan (pg. 281-315)

- Focus Areas funding strategies
- Project matrix
  - Lead and partner agencies
  - Cost estimates
  - Time frame
- Funding opportunities
  - Federal
  - State
  - Local
  - Private

Community & Regional Park System - Project Recommendations			
Time Frame	Project Name	Lead Agency	Estimated Total Cost
Short term (1 yr)	Truckee-Donner RPD: signage enhancements	Truckee-Donner Recreation and Park District	\$100k - \$250k
Short term (1 yr)	Western Gateway RPD: hire on-site park host	Western Gateway Recreation and Park District	\$40k + ongoing
Mid term (2-5 yrs)	Truckee-Donner RPD: determine site location and construct pickleball courts	Truckee-Donner Recreation and Park District	\$1M - \$1.25M
Mid term (2-5 yrs)	Bear River RPD: investigate opportunities for partnerships for low-cost gym space (underutilized warehouse space)	Bear River Recreation and Park District	\$15k - \$50k
Mid term (2-5 yrs)	Western Gateway RPD: develop deferred maintenance/capital improvement plan	Western Gateway Recreation and Park District	\$50k
Mid term (2-5 yrs)	Western Gateway RPD: pedestrian and bike path circuit throughout the park	Western Gateway Recreation and Park District	\$50k - \$250k
Mid term (2-5 yrs)	Bear River RPD: add restroom adjacent to playing fields at Magnolia Sports Complex	Bear River Recreation and Park District	\$50k - \$75k
Long term (>5 yrs)	Oak Tree PRD: Community Park maintenance and site improvements	Oak Tree Park and Recreation District	\$1M - \$3M
Long term (>5 yrs)	Western Gateway RPD: New RV park (with business plan) and improved ballfields	Western Gateway Recreation and Park District	\$1M - \$2M + ongoing
Long term (>5 yrs)	Bear River RPD: additional park space	Bear River Recreation and Park District	\$2M - \$5M
Long term (>5 yrs)	Truckee-Donner RPD: Rocker Memorial Skatepark expansion	Truckee-Donner Recreation and Park District	\$500k - \$750k
Long term (>5 yrs)	Truckee-Donner RPD: playground access in unincorporated Nevada County	Truckee-Donner Recreation and Park District	\$200k - \$500k
Active Partners			
<ul style="list-style-type: none"> <li>• County of Nevada</li> <li>• Nevada Irrigation District</li> <li>• Recreation &amp; Park Districts</li> <li>• Town of Truckee</li> <li>• Donner Summit Association</li> <li>• County of Placer</li> <li>• School Districts</li> <li>• Lake Wildwood</li> <li>• Visit Truckee-Tahoe</li> <li>• Tahoe Donner Association</li> <li>• Municipal Advisory Councils</li> <li>• Lake of the Pines</li> <li>• Truckee Pickleball Club</li> </ul>			

*Example of Project Matrix – Community & Regional Park System*

# Funding & Prioritization



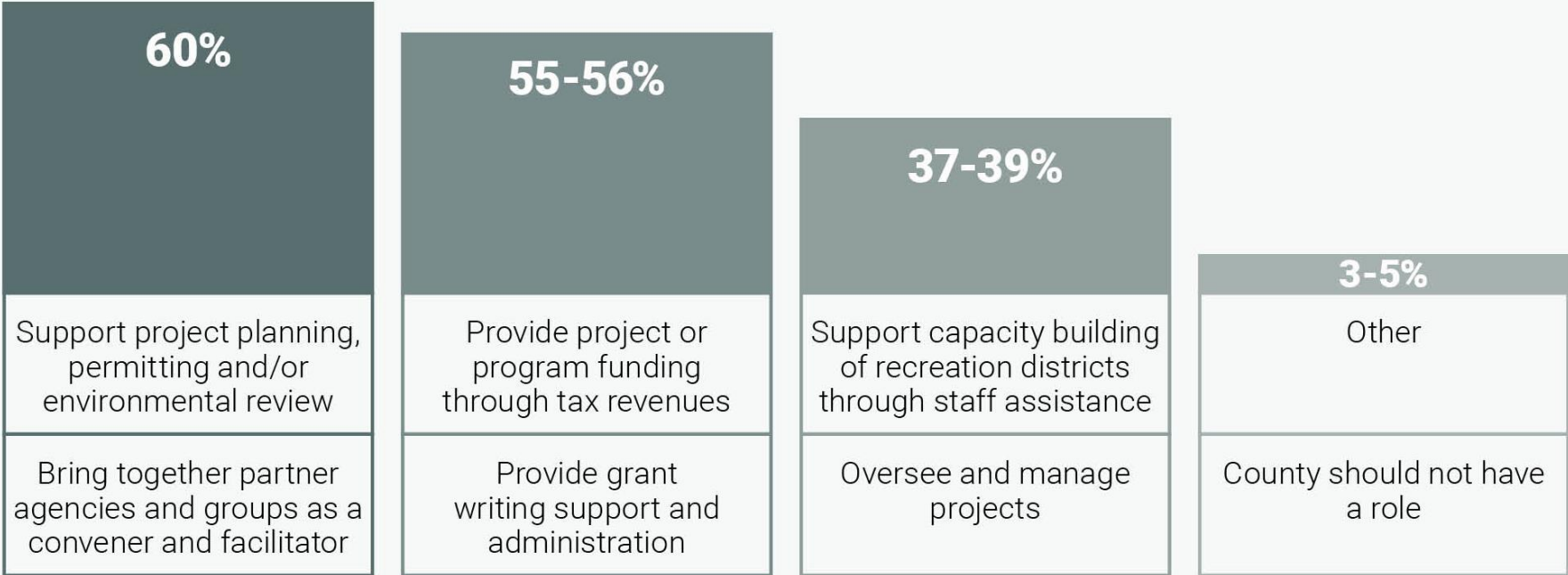
# The Role of the County

- Convener & facilitator
- Support for funding, grant writing
- Increased role in support of western Nevada County recreation & park districts and resources/programming

## Survey Window 3 Results: County's Role in Recreation

Question: What do you think should be the County's role in recreation? (select all that apply)

Shows percent of total responses or how frequently the role was selected by respondents. (Total is greater than 100%.)





# Purpose of the Master Plan | How It Will Be Used

## Recreation Planning Objectives:

- Long-term vision for managing open space and recreation resources with 1- to 5-year immediate actions plan
- Capture the spirit of Nevada County
- Define recreation needs & opportunities
- Identify viable projects
- Devise implementation strategy

## Multi-Benefit Projects to Support Safe & Equitable Access



## Resiliency Objectives:

- Establish County as a resiliency leader to address climate change through the lens of recreation and make county a great place to live
- Planning for shocks and stressors that have acute impacts (e.g., wildfire, floods, pandemic)
- Planning for events that occur over time (e.g., temperature increase, changing precipitation patterns, economic stressors, health changes, ecosystem degradation)

# Staff Recommendation - SR 24-0927

1. Approve the resolution to adopt the Nevada County Recreation and Resiliency Master Plan
2. Authorize the Nevada County CDA Director or designee to incorporate any minor changes before publishing the final version



A scenic landscape featuring a wide valley with a green field, surrounded by dense evergreen forests on rolling hills. The sky is a clear blue with scattered white clouds. The word "Discussion" is centered in the image in a large, white, sans-serif font. The entire scene is framed by a white dotted border.

# Discussion