



GROWING **OUR FUTURE**

**Nevada County Community Action Plan
for Agricultural Economic Vitality**

MAY 2026

A project of the
Nevada County
Resource
Conservation
District and
Nevada County

Funded by the California Strategic Growth
Council and administered by the California
Department of Conservation's Sustainable
Agricultural Land Conservation Program (SALC)

GROWING OUR FUTURE

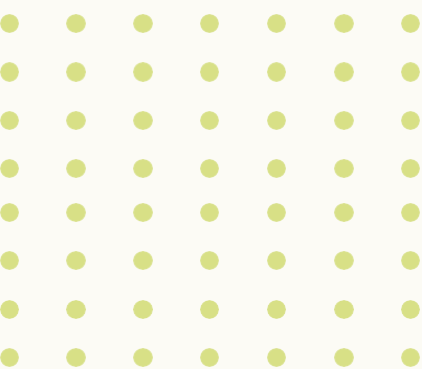
A practical path to strengthen Nevada
County's working landscape

Agricultural Action Plan (Action Guide)

Built with community and partners

Focus: implementation

COMMUNITY ADVISORY COMMITTEE



Funded by the California Strategic Growth Council and administered by the California Department of Conservation's Sustainable Agricultural Land Conservation Program (SALC)

Nevada County Resource Conservation District

Nevada County (Planning, Economic Development, Agricultural Commission)

Nevada County Farm Bureau

Sierra Harvest

Bear Yuba Land Trust

WHY DOES THIS MATTER NOW?

01

Economic
resilience

02

Wildfire + land
stewardship

03

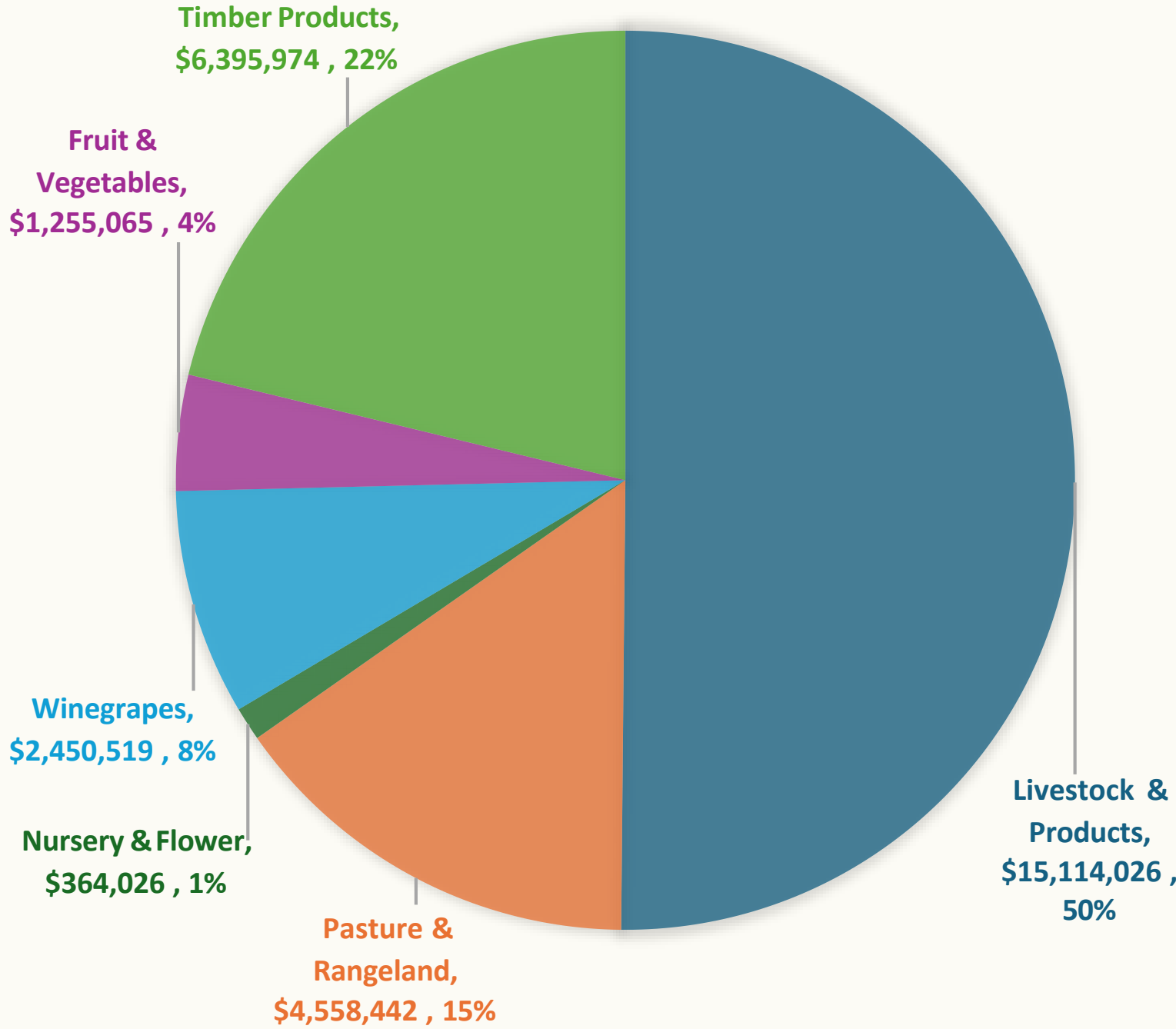
Water + climate
pressures

04

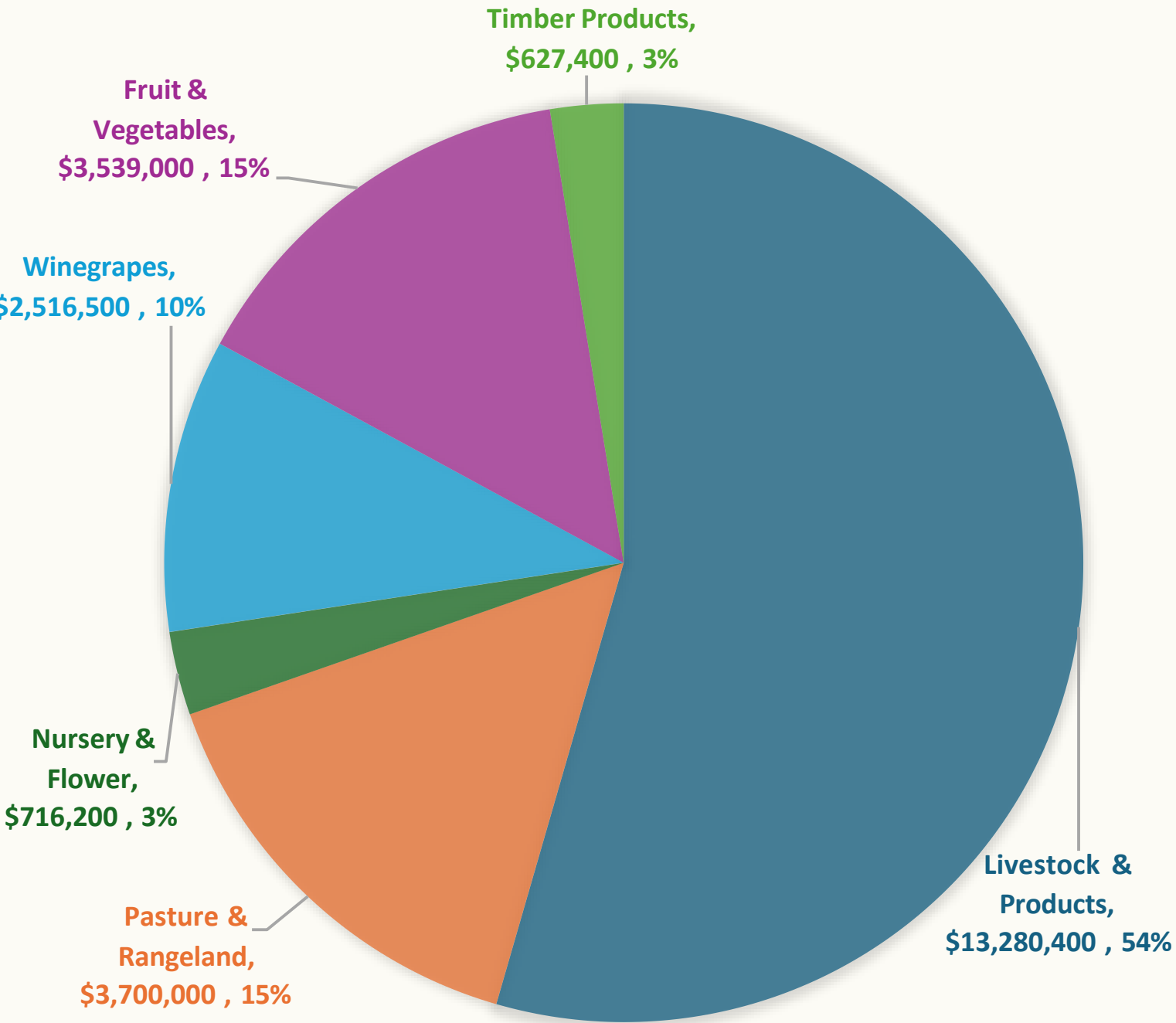
Fragmentation
of working lands

Nevada County Agricultural Production Percent of Share & Value

2013

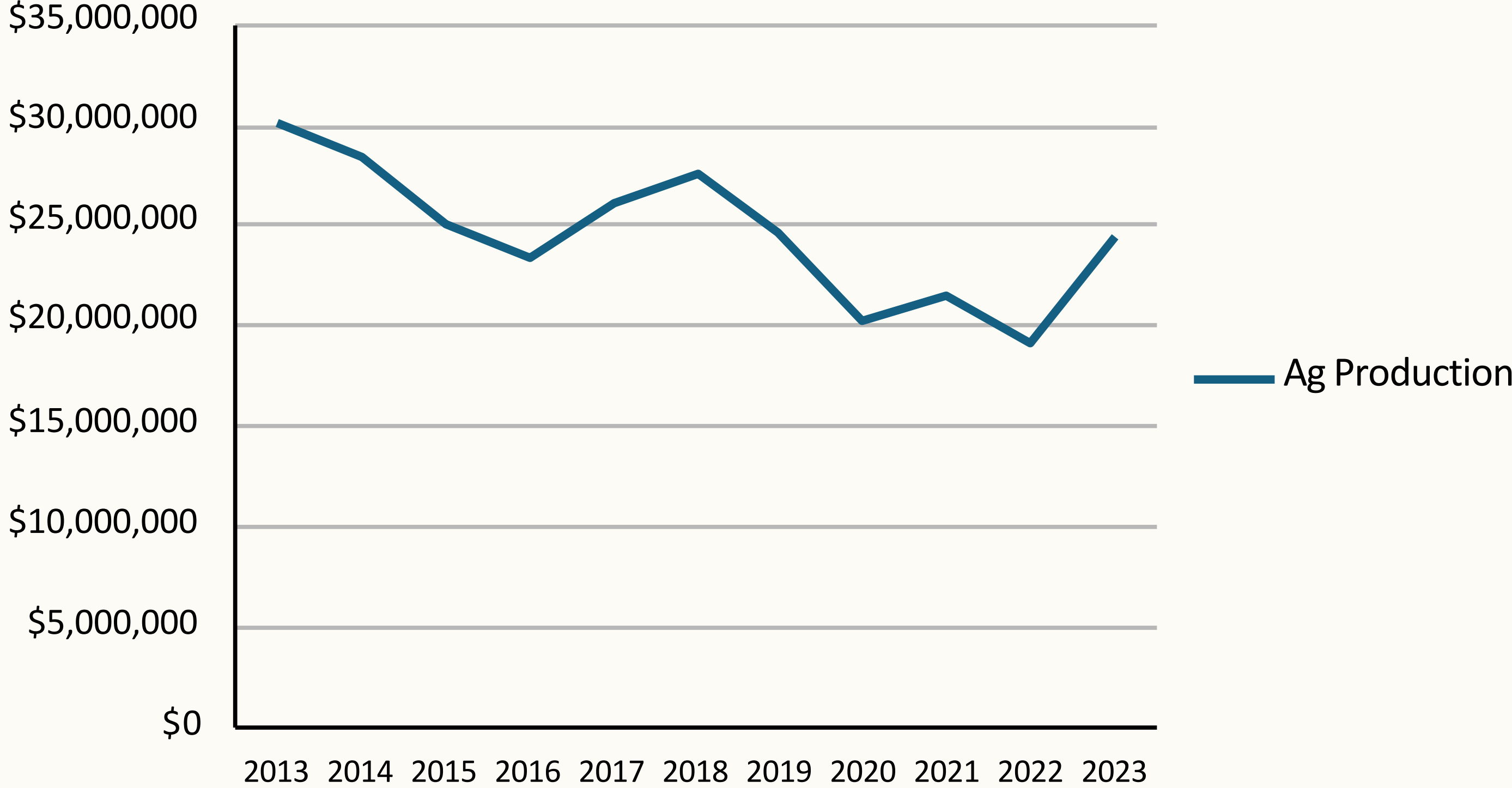


2023



Source: Nevada County Agricultural Commissioners Annual Crop Reports, Consumer Price Index (CPI) inflation calculator: 2003-2023

Nevada County Gross Value Agricultural Production 2013-2023



Source: Nevada County Agricultural Commissioners Annual Crop Reports, Consumer Price Index (CPI) inflation calculator: 2003-2023

COST OF INACTION

01

Loss of
working lands

02

Missed economic
opportunities

03

Increased
wildfire risks

04

Reactive decision
making

WHAT'S DIFFERENT?

01

Action-oriented

02

Community-
driven

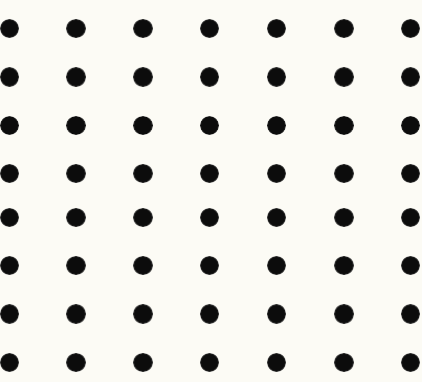
03

Trackable

04

Builds on
existing efforts
& community
infrastructure

THE 9 KEY ACTIONS



› QUICK WINS

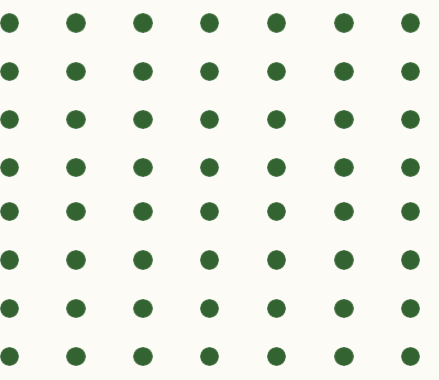
- 1** Launch the Agricultural Economic Vitality Roundtable + AEP
- 2** Launch the Sierra Nevada Farmer Cooperative (SNFC)

› BOLD MOVES

- 3** Stabilize the County's Working Lands Base
- 4** Advance Regional Meat Processing + Workforce Pathways

› SUPPORTING ACTIONS

- 5** Strengthen Farm Succession + Land Access
- 6** Expand Value-Added Processing Capacity
- 7** Strengthen Regional Market Access + Branding
- 8** Build Community Connection to Agriculture
- 9** Coordinate Strategic Funding



ACTION 1

Launch the Agricultural Economic Vitality Roundtable + AEP

*Establish a countywide
Agricultural Roundtable*

Coordinate partners & align resources

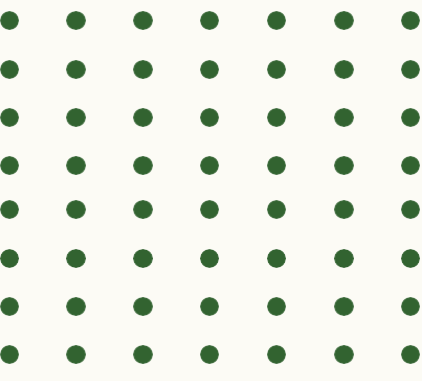
Lead implementation of the Action Plan

*Oversee the Agricultural
Enterprise Program (AEP)*

*Advance a shared funding strategy
for priority grants and investment*

Lead: Nevada County RCD & Economic Development (initial conveners), Roundtable (shared governance)

Value Chain: Land management, access, production, aggregation, distribution, marketing, value-add



ACTION 3

Stabilize the County's Working Lands Base

Develop a "Significant Agricultural Resource Lands" map

Guide conservation and economic strategy

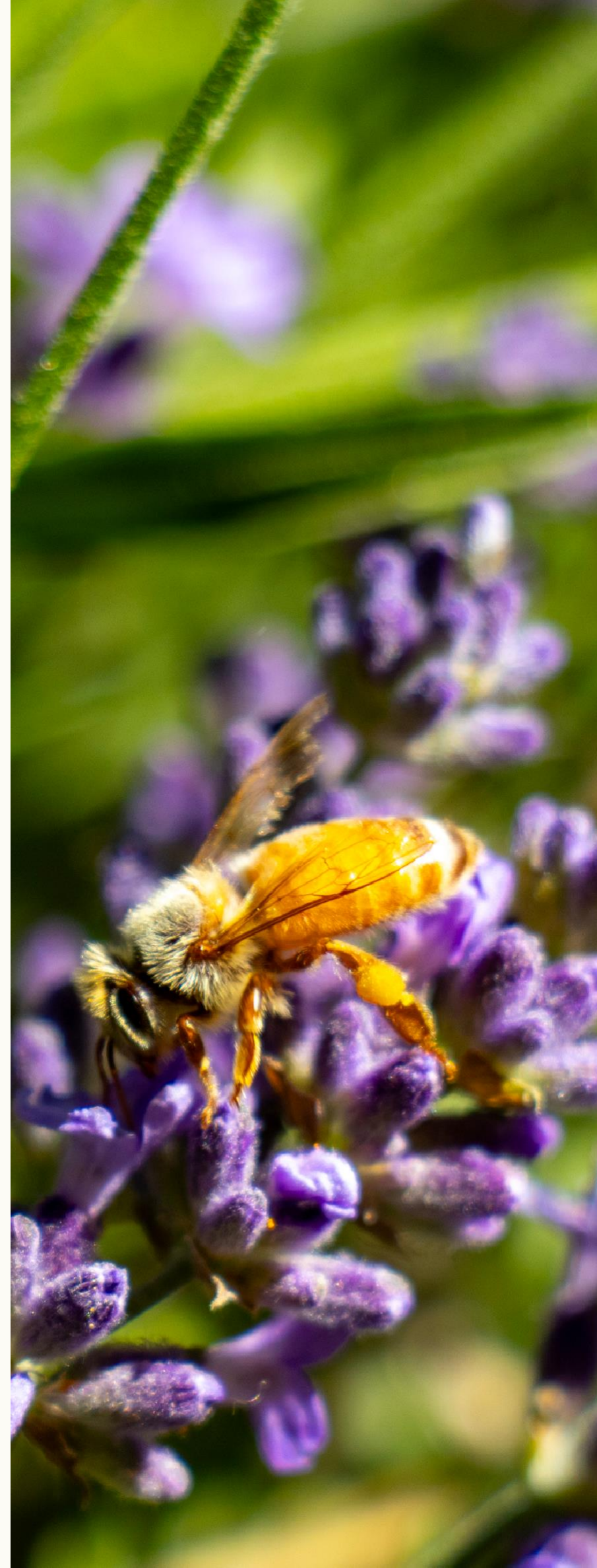
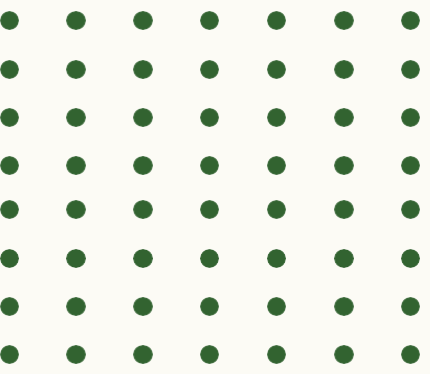
Expand Forever Farms and Evergreen Leases

Protect and aggregate at-risk small farms

Align land conservation, housing, and economic incentives

Lead: Bear Yuba Land Trust + Roundtable

Value Chain: Land management, land access, production, enterprise viability



ACTION 8

Build Community Connection to Agriculture

Expand education and outreach programs

Increase public awareness and support for local agriculture

Launch “Know Your Farmer and Rancher, Know Your Food” campaign

Strengthen community connection and long-term demand

Lead: Sierra Harvest

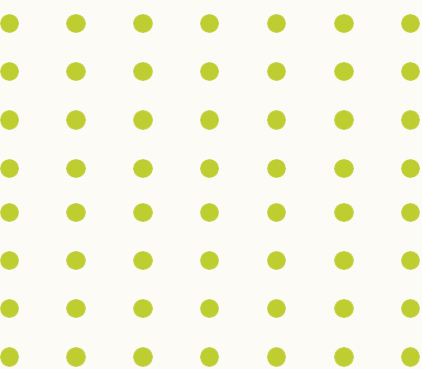
Value Chain: Consumer demand, cultural support, enterprise viability

Community Infrastructure



- Networked implementation
- County = convener + enabler
- Partners and Community already engaged

MOVING FORWARD



S P R I N G - S U M M E R :
Continue outreach

J U N E 1 7 :
Submit Proposal SALC Grant #2

S U M M E R :
Finalize the Action Plan

S E P T E M B E R :
Board of Supervisors Endorsement
of the Action Plan



THANK YOU!

GROWING OUR FUTURE

Nevada County Community Action Plan
for Agricultural Economic Vitality