

Nevada County's Roadmap to Resilience

Nevada County Office of
Emergency Services

May 23, 2023



**NEVADA
COUNTY**
CALIFORNIA

**Office of Emergency
Services**



Board of Supervisors 2023 Objective

*Lead the community in **all hazards planning**, preparedness, response, and recovery with a focus on wildfire. Do this by focusing on improving countywide **evacuation routes** and safety, continuing to strengthen early alert and critical communication systems, **partnering closely with residents and community partners** in emergency preparedness, defensible space, home hardening, green waste disposal, and **fire-safe land stewardship***



OES 2023 Goals



- Build on our strong foundation
- **Work on developing strategic plans**
- Strategic funding and grant prioritization
- Focus on landscape-scale projects and large community-scale projects
- Leverage and continue to build partnerships



Where are we?

Where do we need to go?

- **Wildfire** and **Winter Storms** are disruptive and challenging
- Solutions are needed at the landscape, community, and individual level
- **Community engagement is key**
- We need a dynamic plan for disaster resilience
 - Prevention
 - Mitigation
 - Education



Roadmap to Resilience



Nevada County's Roadmap to Resilience

Holistic long-range vision...



Local Hazard Mitigation Plan



Community Wildfire Protection Plan



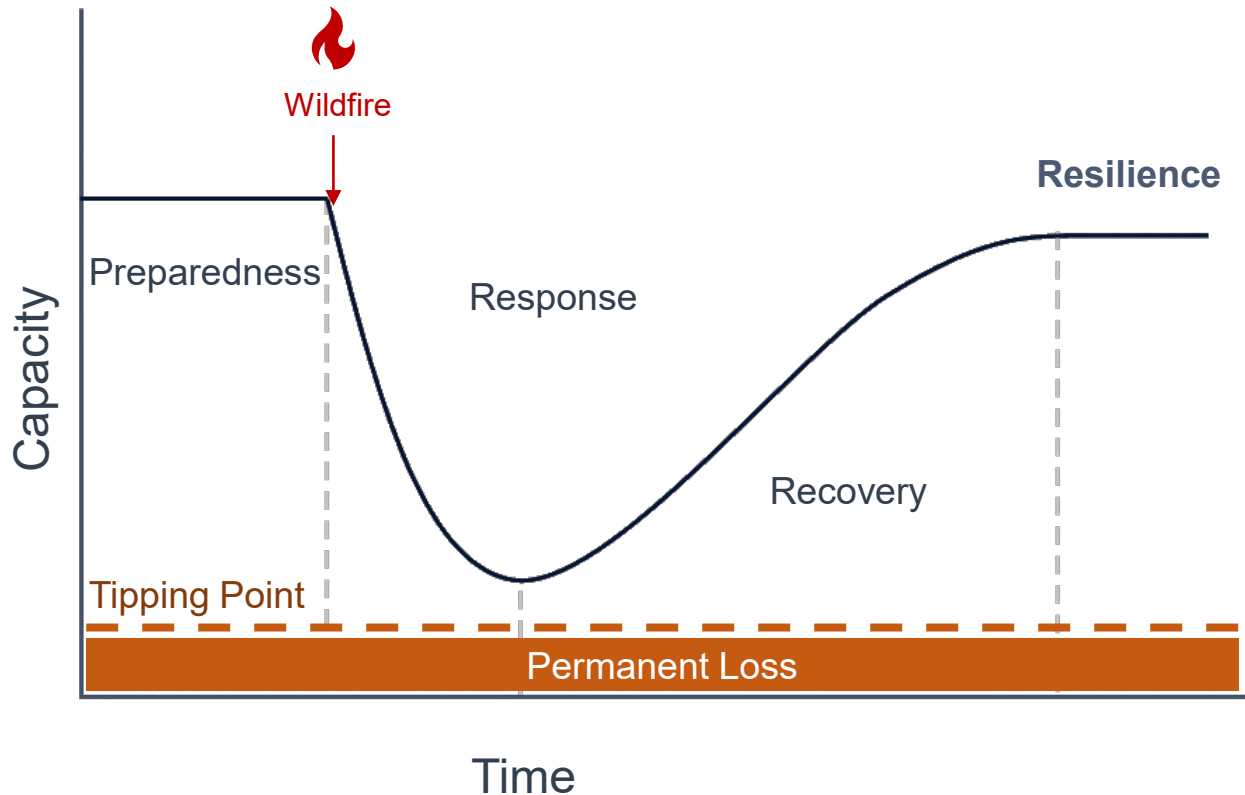
Land Management Plan



Evacuation Study



Resilience



- Capacity to withstand and recover from disaster(s)
- Disaster does not have to be a "tipping point"
- Investing in planning, mitigation, prevention, preparedness, and recovery
- Protecting what we value in our community



Local Hazard Mitigation Plan

- Update of the current (2017) LHMP
- All hazards approach (includes wildfire)
- Establishes hazard and prioritization
- Supported by Wildfire Hazard Assessment
- Allows us to apply for FEMA HMGP funding

Status: Funded (FEMA-HMGP, DR-4558-288-088P)

Next Steps: Consultant Contract and Kick-Off



Community Wildfire Protection Plan



- Provide a "roadmap" for wildfire mitigation
- Landscape and community scale
- Prioritize areas based on wildfire risk and community values
- Supports the County, the community, and partners

Status: Funded (CWDG, Agreement # pending)

Next Steps: Consultant Contract and Kick-Off





Land Management Plan

- A "toolbox" of mitigation treatments for Nevada County
- Best-management practices specific to our landscape
- Increase the pace and scale of work
- A component of the CWPP

Status: Funded (CWDG, Agreement # pending)

Next Steps: Release RFP and Identify Qualified Consultant





Evacuation Study



- Understand evacuation constraints and opportunities
- Identify priority areas for ingress and egress improvement
- Opportunity for community input

Status: Funded (CAL FIRE, 5GG21105)

Next Steps: Consultant Contract and Kick-Off



Nevada County Community Wildfire Protection Plan



What is a Community Wildfire Protection Plan (CWPP)?

- Healthy Forest Restoration Act
- Plan for wildfire risk reduction
- Identify and prioritize areas for wildfire mitigation
- Versatile planning document
- **Created by the community for the community**



What does a CWPP Do?

It Does

- Create a collaborative wildfire planning document
- Create a roadmap for wildfire mitigation
- Consider multiple scales of hazard and risk
- Identify and prioritize areas for mitigation

It Does Not

- Create rules or laws
- Influence fire insurance
- Create a CEQA document or serve as environmental analysis
- Mandate what should or should not be done

It is a strategic, collaborative, and educational planning tool for at-risk communities



CWPP Requirements



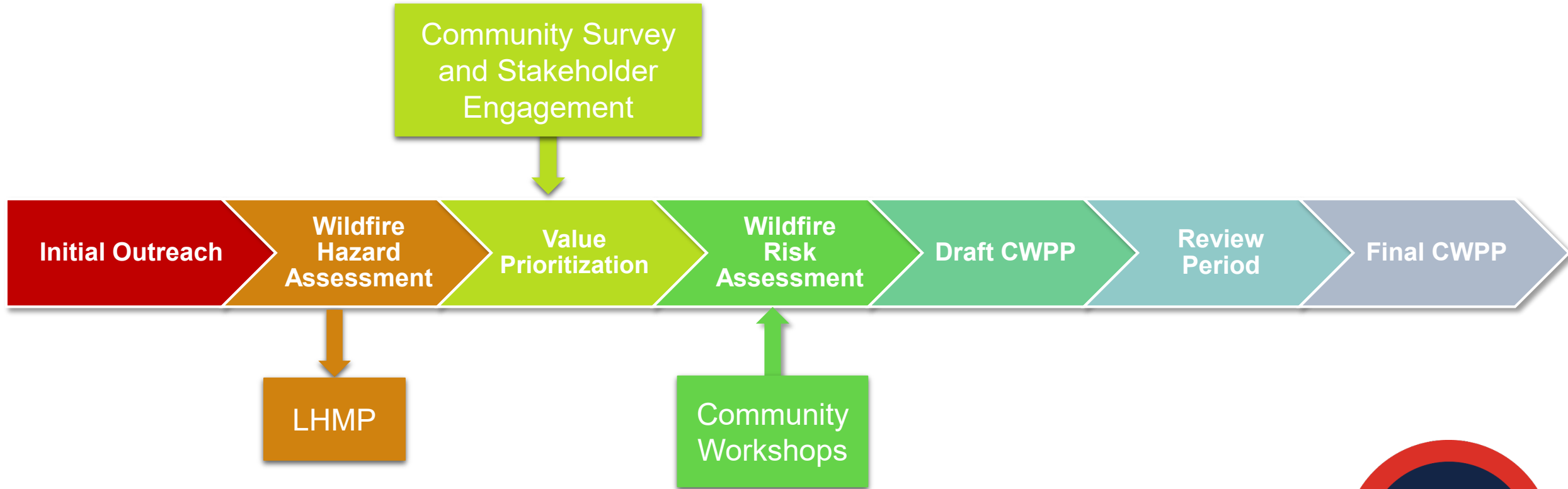
1. Regional collaboration
2. Identify and prioritize areas for mitigation
3. Identify strategies for reducing structural ignitability
4. Best management practices

Nevada County CWPP

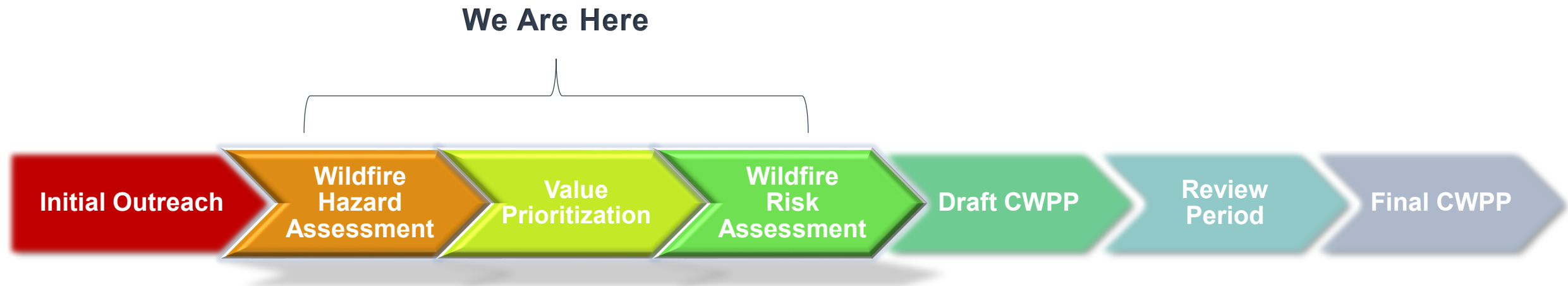
- More than just a document
- 5 phase approach
 1. Outreach
 2. Wildfire Risk Assessment
 3. Land Management Plan
 4. CWPP Document
 5. CWPP Dashboard
- 18-month program



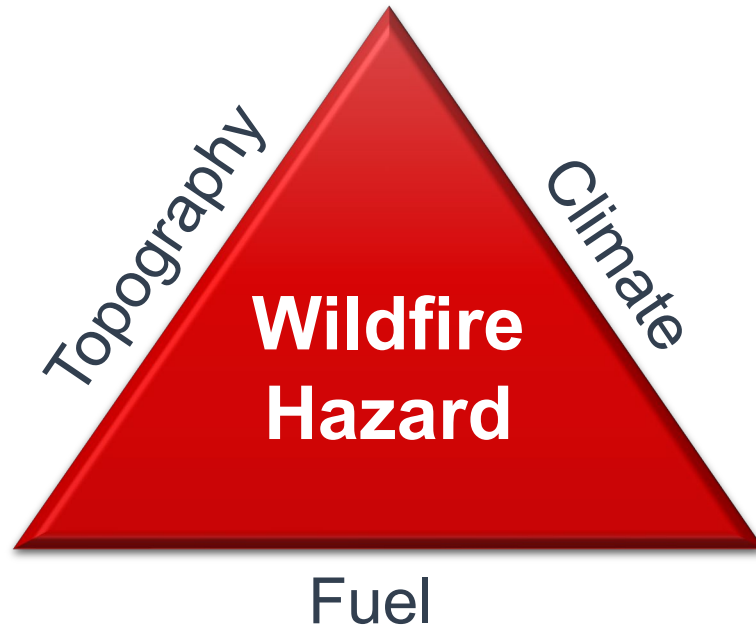
CWPP Flow Chart



CWPP Flow Chart



Wildfire Hazard vs. Wildfire Risk



Wildfire Hazard helps us understand our fire environment and Wildfire Risk helps us decide what to protect based on what we consider to be important

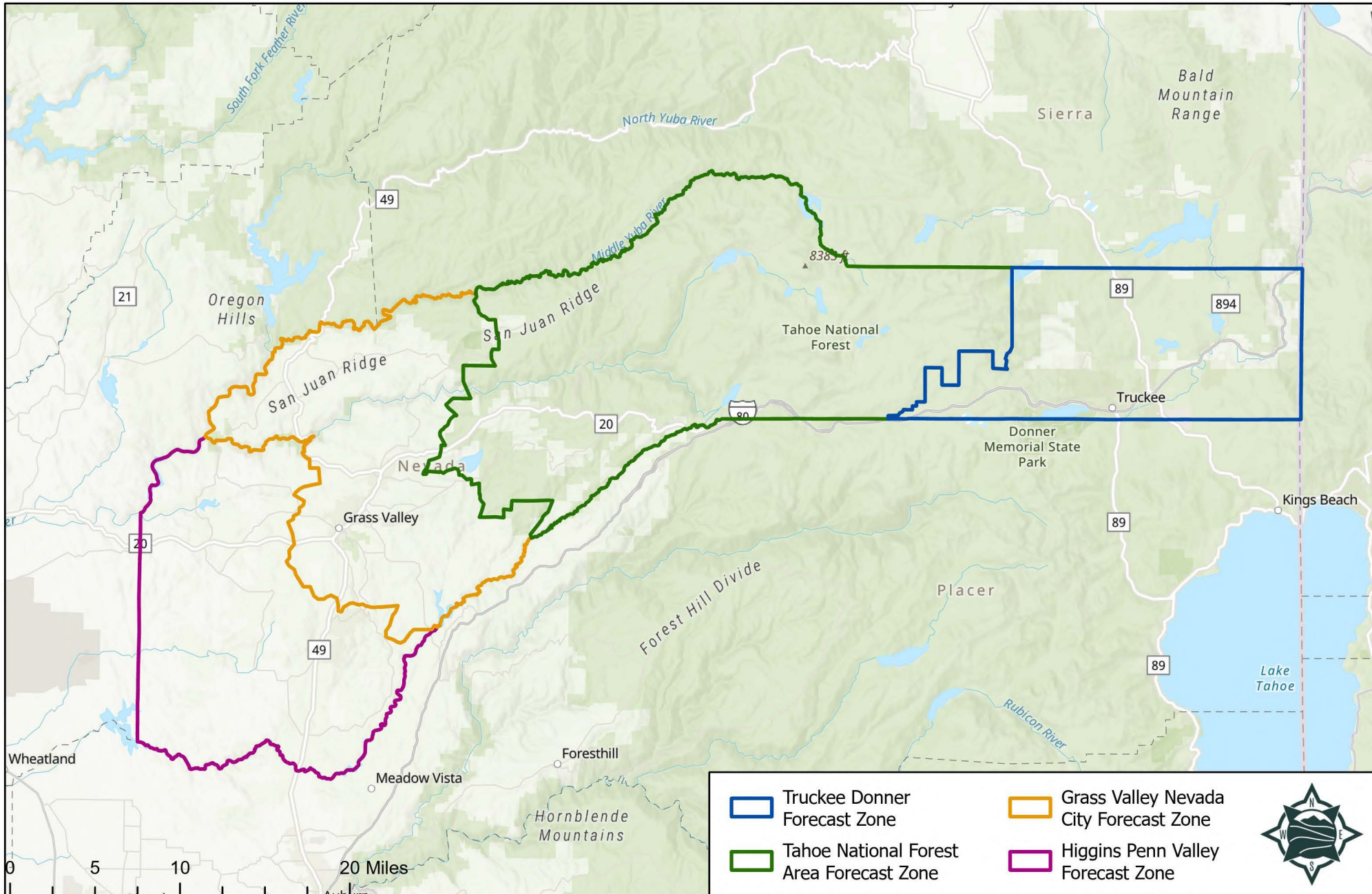


Wildfire Risk Assessment (Overall)

- Wildfire Hazard Assessment and Wildfire Risk Assessment
- Specific to Nevada County wildfire challenges
- Landscape and community scale
- 4 forecast zones for the assessment



Fire Modeling Forecast Zones



Wildfire Hazard Assessment



- Fire behavior modeling
 - Comparative hazard analysis
- Determines hazard priority areas
- Worked collaboratively with CAL FIRE
- Wrapped up modeling results in April
- Fire Chiefs meeting in June



Wildfire Risk Assessment

- Fire Risk Modeling
- Determines priority areas based on wildfire risk
 - Uses results from hazard assessment
 - High-value resources and critical assets' vulnerability to wildfire
 - CWPP Survey
 - Community values
 - Community priorities
- Project Priority Areas
- In-progress



The Community



- Crucial element of the process
- Worked in advance to establish community priorities and concerns
- Robust outreach and engagement strategy
- Multiple opportunities for public participation
 - Survey
 - Workshops
 - Public comment



Next Steps

- Community Survey
 - Help establish wildfire risk
 - Establish the community priorities for mitigation
- Available online June 1st through August 31st
 - English and Spanish
- Social Media campaign
- Available at outreach events



Nevada County's Roadmap to Resilience

- Local Hazard Mitigation Plan

paul.cummings@nevadacountyca.gov

alex.keeble-toll@nevadacountyca.gov

- Community Wildfire Protection Plan

alessandra.zambrano@nevadacountyca.gov

craig.griesbach@nevadacountyca.gov

- Evacuation Study

sean.scales@nevadacountyca.gov

alex.keeble-toll@nevadacountyca.gov

- Sign-up to attend Virtual Office Hours

alessandra.zambrano@nevadacountyca.gov

- Email OES with Evacuation Priorities

oes@nevadacountyca.gov

- Take the CWPP Survey



Thank you

