



## **ORDINANCE NO. 2546**

### **OF THE BOARD OF SUPERVISORS OF THE COUNTY OF NEVADA**

#### **AN ORDINANCE ADDING SECTION 16.03.235 TO THE NEVADA COUNTY CODE TO RESTRICT VEHICLE LENGTHS ON CERTAIN COUNTY ROADS – ALL DISTRICTS**

THE BOARD OF SUPERVISORS OF THE COUNTY OF NEVADA, STATE OF CALIFORNIA, ORDAINS AS FOLLOWS:

##### **SECTION I:**

That the restriction of vehicle lengths on certain County roads, and the addition of truck restriction signs for Coyote Street, be approved based on the following findings A-E:

- A. That in order to ensure and protect public health, safety, and welfare, it may be necessary from time to time to limit vehicle lengths on certain County roads.
- B. That from 330 feet north of Highway 49 to North Bloomfield Road, Coyote Street is a County maintained roadway.
- C. That North Bloomfield Road is a County maintained roadway.
- D. That Coyote Street has several curves that cannot be negotiated by trucks longer than 23 feet without them occupying the opposing lane.
- E. That the City Engineer for the City of Nevada City supports the restriction of truck traffic on Coyote Street to a maximum length of 23 feet.

##### **SECTION II:**

Section 16.03.235 is hereby added to the Nevada County Code as shown in EXHIBIT A, attached hereto and incorporated herein by this reference.

##### **SECTION III:**

If any section, sentence, clause, or phrase is for any reason held to be invalid or unconstitutional by a decision of any court of competent jurisdiction, such decision shall not affect the validity of the remaining portions of this ordinance. The Board of Supervisors hereby declares that it would have passed this ordinance and adopted this ordinance and each section, sentence, clause, or phrase thereof, irrespective of the fact that any one or more sections, subsections, sentence, clauses, or phrases be declared invalid or unconstitutional.

##### **SECTION IV:**

This Ordinance shall take effect and be in force at the expiration of thirty (30) days from and after its passage, and it shall become operative on the 7th day of August 2025, and before the expiration of (15) days after its passage it shall be published once, with the names of the Supervisors voting for and against same in the Union, a newspaper of general circulation printed and published in the County of Nevada.

PASSED AND ADOPTED by the Board of Supervisors of the County of Nevada at a regular meeting of said Board, held on the 8th day of July 2025, by the following vote of said Board:

Ayes: Supervisors Heidi Hall, Robb Tucker, Lisa Swarthout, Susan Hoek, and Hardy Bullock.

Noes: None.

Absent: None.

Abstain: None.

Recuse: None.

ATTEST:

TINE MATHIASSEN  
Chief Deputy Clerk of the Board of Supervisors

By: Susan, Deputy COB

Heidi Hall  
Heidi Hall, Chair

COYOTE STREET TRUCK RESTRICTION SIGNS

HIGHWAY 49 / COYOTE STREET / NORTH BLOOMFIELD ROAD



PROPOSED SIGN

VICIN  
NTS

SHEET	TITLE
1	TITLE

1 TITLE SHEET  
2 SIGN LAYOUT AT HWY 49 / COYOTE ST  
3 SIGN LAYOUT AT NORTH BLOOMFIELD RD / COYOTE ST

Drawing

7



Coyote Street Truck Restriction Signs

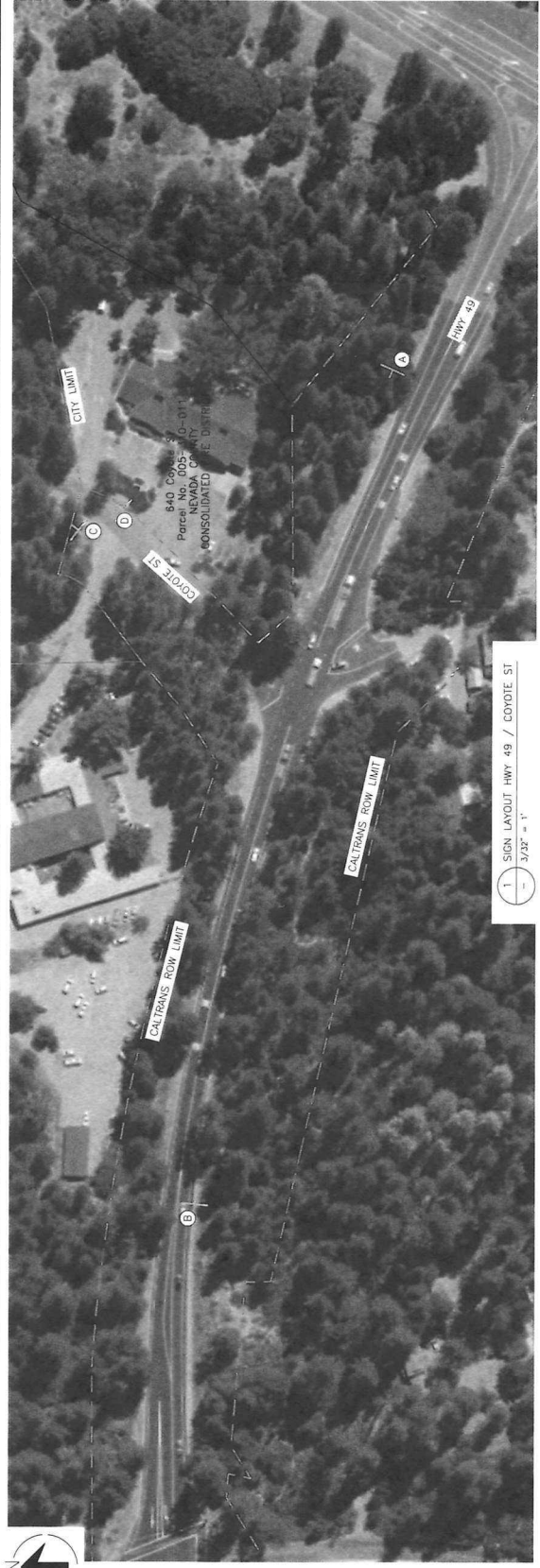
**TITLE SHEET**

---

Nevada County – Department of Public Works

[illegible]

Revisions



A black and white photograph of a train moving through a wooded area. The train is blurred, suggesting motion. A sign with a circular arrow and a downward arrow is visible in the foreground.

R5-2  
24" X 24"

R20D-4 (CA)  
24" X 12"

M5-1  
24" X 18"

SIGN TYPES
2
-
NTS

CD	SIGNS C & D
-	NTS



Designed:	RP
Drawn:	RP
Checked:	PP
Job No:	X
Date:	May 5, 2025
Scale Reference	
0	1 in

Drawing 2

Coyote Street Truck Restriction Signs  
SIGN LAYOUT AT HWY 49 / COYOTE ST

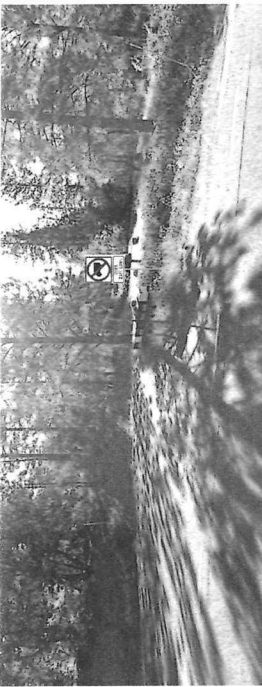
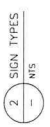
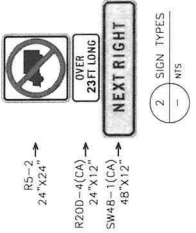


No.	Description	By	Date





1 SIGN LAYOUT N. BLOOMFIELD RD / COYOTE ST  
1/8" = 1'



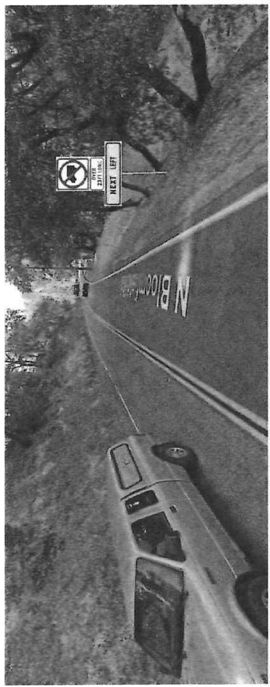
B SIGN B  
N/S



D SIGN D  
N/S




A SIGN A  
N/S



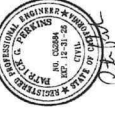
C SIGN C  
N/S

Revisions		
No.	Description	Date



Coyote Street Truck Restriction Signs  
SIGN LAYOUT AT  
NORTH BLOOMFIELD RD / COYOTE ST

Nevada County — Department of Public Works



Designed: RP  
Drawn: RP  
Checked: PP  
Job No: X  
Date: May 5, 2025  
Scale Reference: 0 1 in

Drawing: 3

**From:** [Bryan McAlister](#)  
**To:** [Richard Poole](#)  
**Subject:** RE: Proposed Coyote St Truck Restriction Signs  
**Date:** Thursday, February 27, 2025 2:54:05 PM  
**Attachments:** [image002.png](#)

---

This looks great. We are fully in support of this. Let me know if anything else is needed.  
Thank you!

Bryan McAlister, PE, PLS  
City Engineer  
City of Nevada City  
(530) 265-2496 x126  
cell (530) 559-1326

**From:** Richard Poole <[Richard.Poole@nevadacountyca.gov](mailto:Richard.Poole@nevadacountyca.gov)>  
**Sent:** Wednesday, February 26, 2025 5:09 PM  
**To:** Bryan McAlister <[Bryan.McAlister@nevadacityca.gov](mailto:Bryan.McAlister@nevadacityca.gov)>  
**Subject:** Proposed Coyote St Truck Restriction Signs

Hello Brian,

I'll see if I can catch you on the phone tomorrow to discuss this.

I wanted to send you plans first to make it easier to follow what I'm talking about.

In brief, because Coyote St. is so narrow and winding, we would like to install signs restricting truck access to improve safety.

Some of the areas we are proposing signs are within the City limits and within Caltrans ROW.

Thank you!



**NEVADA  
COUNTY**  
CALIFORNIA

Richard Poole | Assistant Engineer  
Department of Public Works  
950 Maidu Avenue, Suite 170 (PO BOX 599002)  
Nevada City, CA 95959-7902  
Office: (530) 265-7104 Mobile: (530) 913-1028

## **EXHIBIT A**

### **NEVADA COUNTY CODE TITLE 16 CHAPTER 3**

#### **Section 16.03.235 Vehicle Length Restrictions on County Roads**

The length of vehicles shall be restricted on County roads as follows:

- A. Truck traffic on Coyote Street shall be restricted to a maximum length of 23 feet.

The Road Commissioner of the County is hereby authorized and directed to erect and maintain, or cause to be erected and maintained, appropriate signs on the roads referred to in this section, giving notice of the provisions of such section, and in accordance with the requirements of the California Vehicle Code.