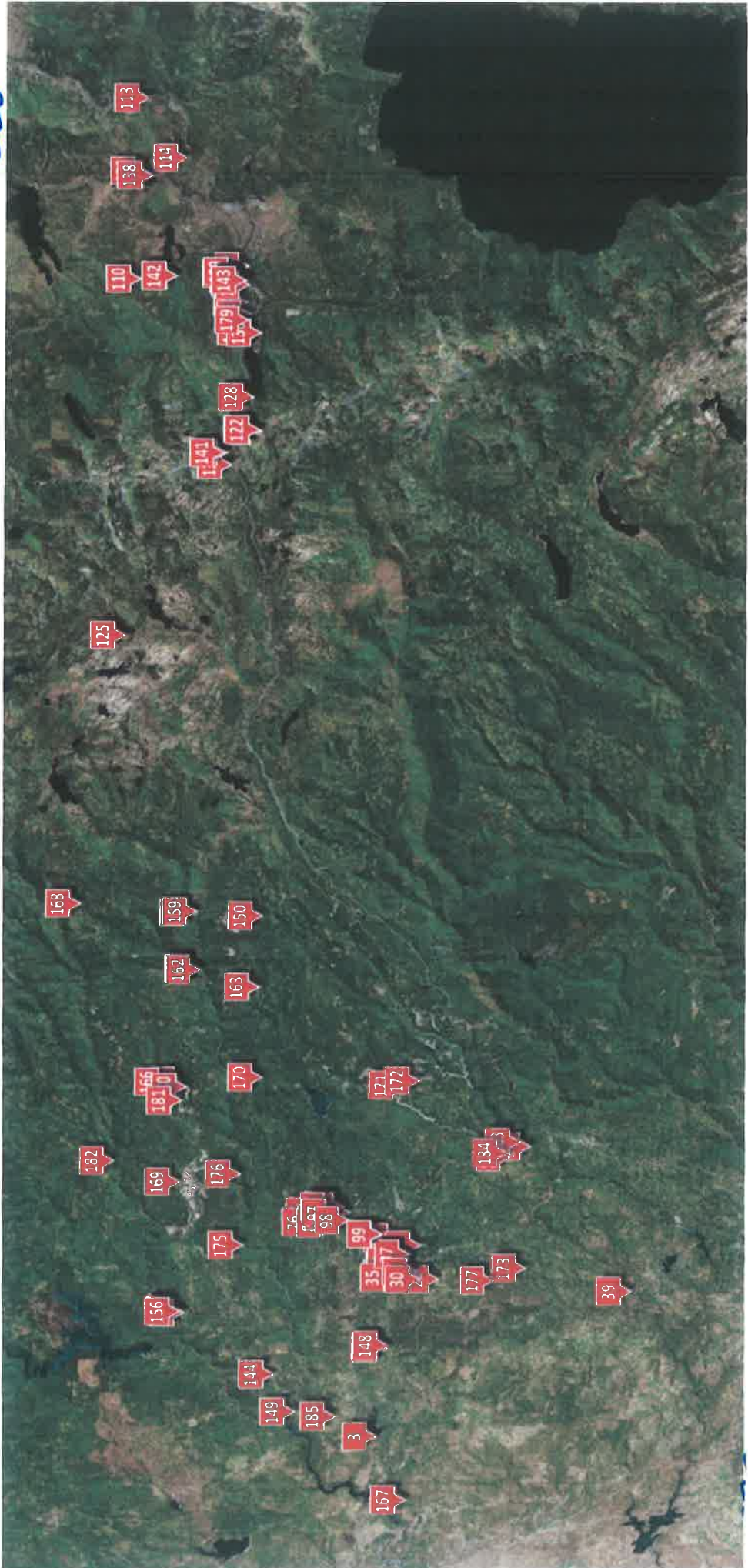


#24

RECEIVED

MAR 10 2017

NEVADA COUNTY  
BOARD OF SUPERVISORS  
*cc: All BOS  
Council  
CEO*

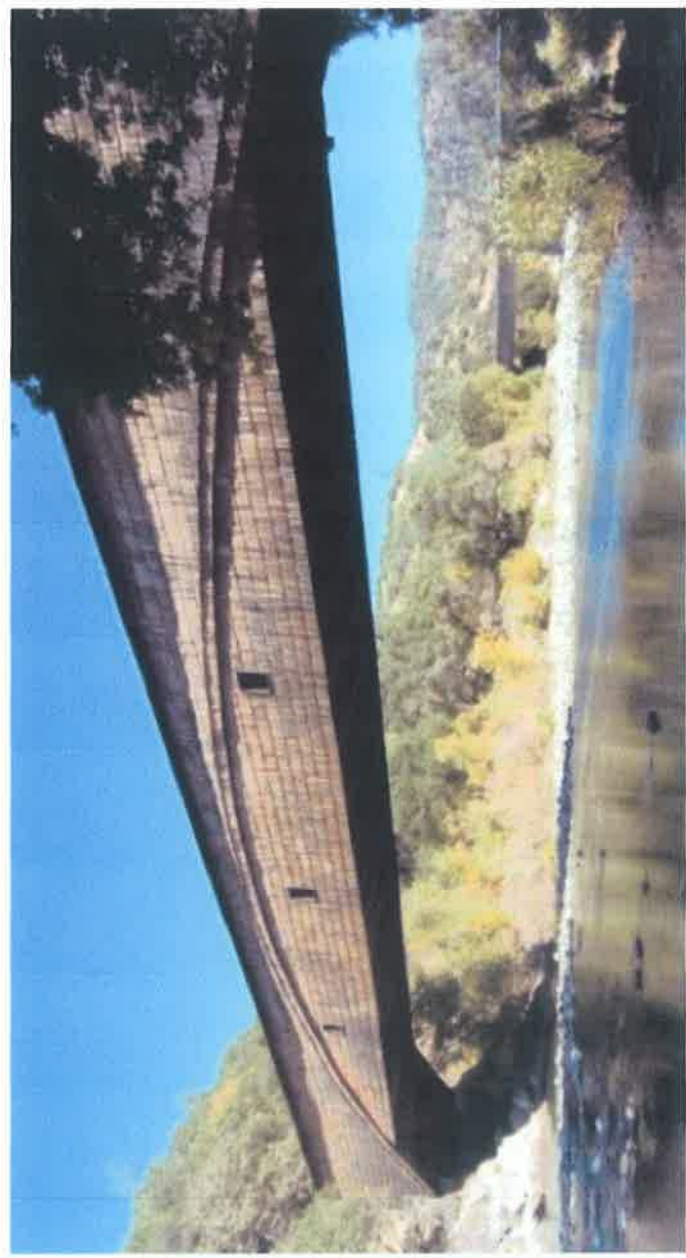


*Provided by Bume  
Zimmerman  
Historical Landmarks*

# Nevada County Historical Landmarks Commission

- Home
- About the Commission
- Learn More
- News

## Home



Bridgeport Covered Bridge

## The Purpose of the Commission

Nestled in the foothills of the Sierra Nevada, Nevada County lay at the heart of the 49er experience. Many thousands came here to make their fortune and much evidence of their

### Featured Landmarks

- From the Archives; the Fields/Nixon Exchange
- Featured Landmarks: Jewish Cemeteries
- From the Archives
- Working Lands; An Armchair Trek from Bear River Land Trust
- New Landmark: Boardman House

### You are following this blog

You are following this blog (manage).

# Nevada County Historical Landmarks Commission

[Home](#)

[About the Commission](#)

[Learn More](#)

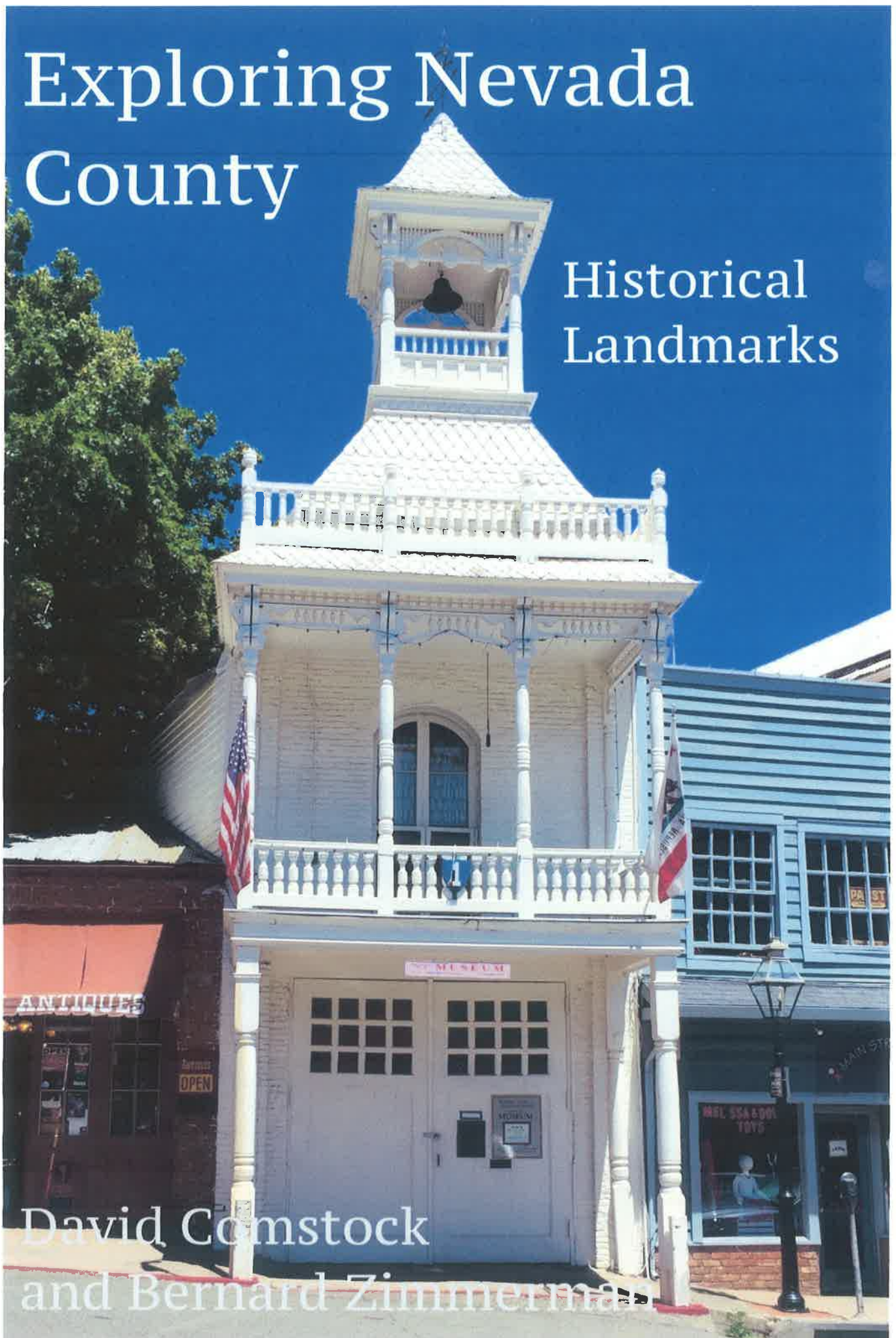
[News](#)

## Links to Other Sites

- [Aaron Sargent House \(landmark application\) \(history\)](#)
- [American Hill Diggings \(landmark application\)](#)
- [Anthony House \(landmark application\)](#)
- [Baruh Home \(landmark application\)](#)
- [Boardman House \(landmark application\)](#)
- [Bridgeport \(landmark application\) \(history\)](#)
- [Emmanuel Episcopal Church \(landmark application\)](#)
- [Empire Mine \(landmark application\) \(history\)](#)
- [Foote's Crossing Road \(landmark application\)](#)
- [Gilmore Field \(history\)](#)
- [Glenbrook Basin \(history\)](#)
- [Hartung House \(landmark application\)](#)
- [Holbrooke Hotel \(landmark application\) \(history\)](#)
- [Idaho Maryland Mine \(landmark application\)](#)
- [Lola Montez House \(landmark application\) \(history\)](#)
- [Lotta Crabtree \(history\)](#)
- [Marsh House \(landmark application\) \(history\)](#)
- [Misc. Grass Valley Landmarks \(landmark application\)](#)
- [Misc. Nevada City Landmarks \(landmark application\)](#)
- [Mt. Elisha Stephens \(landmark application\) \(history\)](#)

# Exploring Nevada County

Historical  
Landmarks



David Comstock  
and Bernard Zimmerman



Nevada County has over 200 sites which have been designated as historical landmarks. About a quarter of them are listed on the National and State Registers. The others have been designated by the Nevada County Historical Landmarks Commission, the Nevada County Historical Society and local civic groups.

The Nevada County Historical Landmarks Commission was formed in 1969 by the Nevada County Board of Supervisors and charged with a mission of identifying, preserving and promoting the County's historic sites. More information about the Commission can be found on its website [nevadacountylandmarks.com](http://nevadacountylandmarks.com)

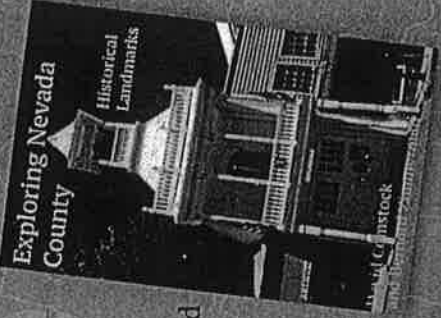
**149** The website contains a link to an interactive map jointly created by the Commission and Nevada County Geographic Information Systems staff. The map locates each historic site and provides photographs and detailed historical information.



[www.NevadaCountyLandmarks.com](http://www.NevadaCountyLandmarks.com)

# EXPLORING NEVADA COUNTY Historical Landmarks

## Equip



Download to your smartphone or tablet and enjoy a pleasant drive through beautiful Nevada County, visiting almost 200 historical landmarks on the way.

Easily find each landmark with Google map links, along with many other informative links of historical significance.

**Available Now** from Apple iBooks, Amazon and Barnes and Noble.

**Prefer Paper?** Get the book from [www.comstockbonanza.com](http://www.comstockbonanza.com).

For more information, go to [youbetpress.com](http://youbetpress.com)

