



**League of Women Voters
of
Western Nevada County**

2017

PARKS AND RECREATION STUDY



There is a direct correlation between recreation and health.



Community health



Tourism



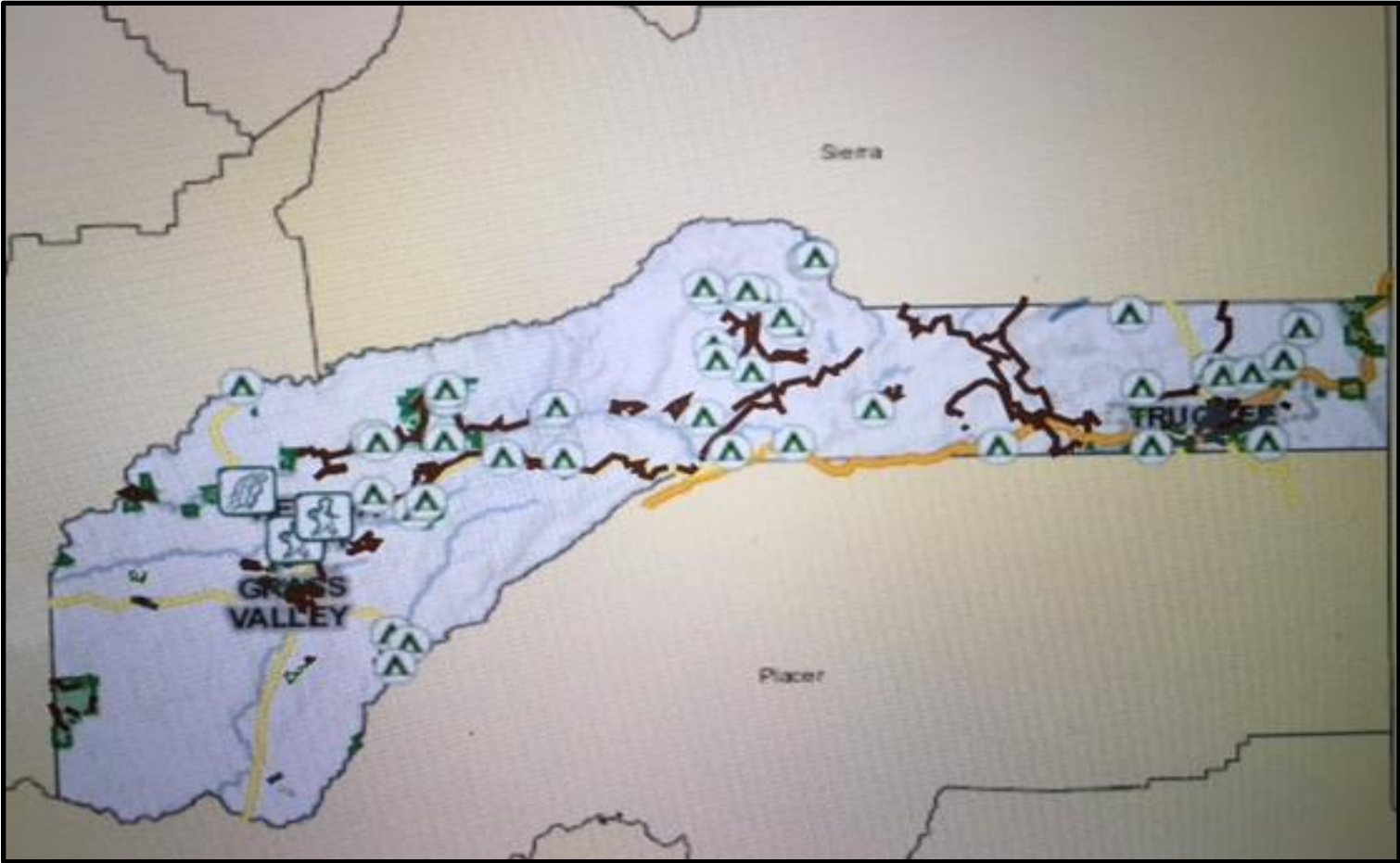
Economic growth



More recreational opportunities =
happier, healthier, wealthier communities



Nevada County Regional Map



How was the study conducted?

- Conducted interviews with community leaders and identified stakeholders
- Compiled findings and recommendations
- Presentation of report to League
- Review and approval of report
- Release report to community

Questions this Study addresses:

- Are the needs of the community being met by the current Parks and Recreation offerings and services?
- Is money intended for Parks and Recreation being collected and distributed correctly and effectively?
- What opportunities exist for improvement?
- Has anything changed in Nevada County in the past thirty years?

Quote from an interviewed public official:

“(We are) short on ball fields, short on programs, and the primary reason is a lack of funding because the county is not engaged. (So the) burden falls on the two cities with the smallest budgets.”

Nevada County Population

1860	16,446	---
1870	19,134	16.3%
1880	20823	8.8%
1890	17,369	-16.6%
1900	17,789	2.4%
1910	14,955	-15.9%
1920	10,850	-27.4
1930	10,596	-2.3%
1940	19,283	82.0%
1950	19,888	3.1%
1960	20,911	5.1%
1970	26,346	26.0%
1980	51,645	96.0%
1990	78,510	52.0%
2000	92,033	17.2%
2010	98,764	7.3%
Est. 2015	98,877	0.1%

Who was interviewed?

Ana Acton- Executive Director, FREED
Richard Anderson- Nevada County Supervisor
Nate Beason- Nevada County Supervisor
Ray Bryars- FREED, GCTC, Walkability Program
Willie and Sue Brusin- Gold Country Trails Council
Dave Carter- Former Chair, Nevada County Recreation Commission
Marty Coleman-Hunt- Executive Director, Bear Yuba Land Trust
Caleb Dardick- Executive Director, SYRCL
Jason Fouyer- Grass Valley Mayor
Jamiel Fox- President, BONC
Matt Green- Head Ranger, South Yuba State Park
Morgan Goodwin- Truckee Vice Mayor
Rick Haffey- Nevada County CEO
Holly Hermansen- Nevada County Superintendent of Schools
S.R. Jones- Executive Director LAFCo
Jennifer Montgomery, Placer County Supervisor

John Keef- ASPOA President
Dan Landon- Executive Director, Nevada County Transportation Commission
Howard Levine- Grass Valley City Council
Jet Lowe- USFS Tech Spec
Jaede Miloslavich- President, Emigrant Trail Conservancy
Elizabeth Martin- CEO, The Sierra Fund
Dan Miller- Nevada County Supervisor
Ed Scofield- Nevada County Supervisor
Marlene Sharon- General Manager, Bear River Recreational District
Tina Vernon- Nevada County Treasurer
Nancy Weber- President, NID Board of Directors
Dawn Zydonis- Supervisor, Nevada City Recreation District
Duane Strawser- Nevada City Council
Gordon Beatie- Board of Directors, Boys and Girls Club
Daniel Swartzendruber, Tru-Line Builders

Study Questionnaire

Name: _____
Title: _____ How long in this position? ____
Organization: _____
Public Agency X NGO X Other: _____

What role does your agency/organization play in Nevada County? (public vs. private; purpose)

What recreational services/facilities/opportunities do you provide, if any?

Are you aware of others who provide the same services?

Please describe the group you serve, your clientele.

How does the public learn about your services? Publicity? Out reach?

How large is your paid staff?

Do you depend on volunteers? How many? How are they recruited?

How is your organization funded? What is your annual budget?

Do you generate or receive funds for recreation and parks?

Is there a framework for integrating your services and collaborating with other agencies and NGO's (non-government organizations).

Were you or someone else from your organization interviewed in the 2006 Nevada County Recreation and Parks Services Study?

(Municipal Services Review conducted by LAFCO [Local Agency Formation Commission])

Do you know why the 2006 Municipal Services Review wasn't repeated in 2012, as planned?

Are you aware of Nevada County Recreation Mitigation Funding Program and the grants process to access this funding?

Are you familiar with the 2013 Community Health Needs Assessment conducted by Sierra Nevada Memorial Hospital?

Findings and recommendations?

Are you aware of any Recreation and Parks departments in Nevada County? If so, which ones?

What recreational facilities or resources in the County have you or your family visited in the last 18 months?

Are you aware that Nevada County doesn't have a Parks or Recreation Department?

In your opinion, are the recreation resources and parks in Nevada County adequate?

If no, what is needed?

What recreational needs do you feel are not being met? Have they been met in the past?

What other issues or concerns should be included in this Study?

Would you be willing to participate if a follow-up interview is needed?

Who else do you recommend we interview?

NOTES: Additional topics, issues, interviewees to follow up:

The role of NGOs



NGO property is not public



No assurance of sufficient funding



NGOs lack access to means to be paid for public use.
Examples include property tax, tax assessments, etc.



The matter of public safety



Wildfire



Not designed to meet needs of future residents



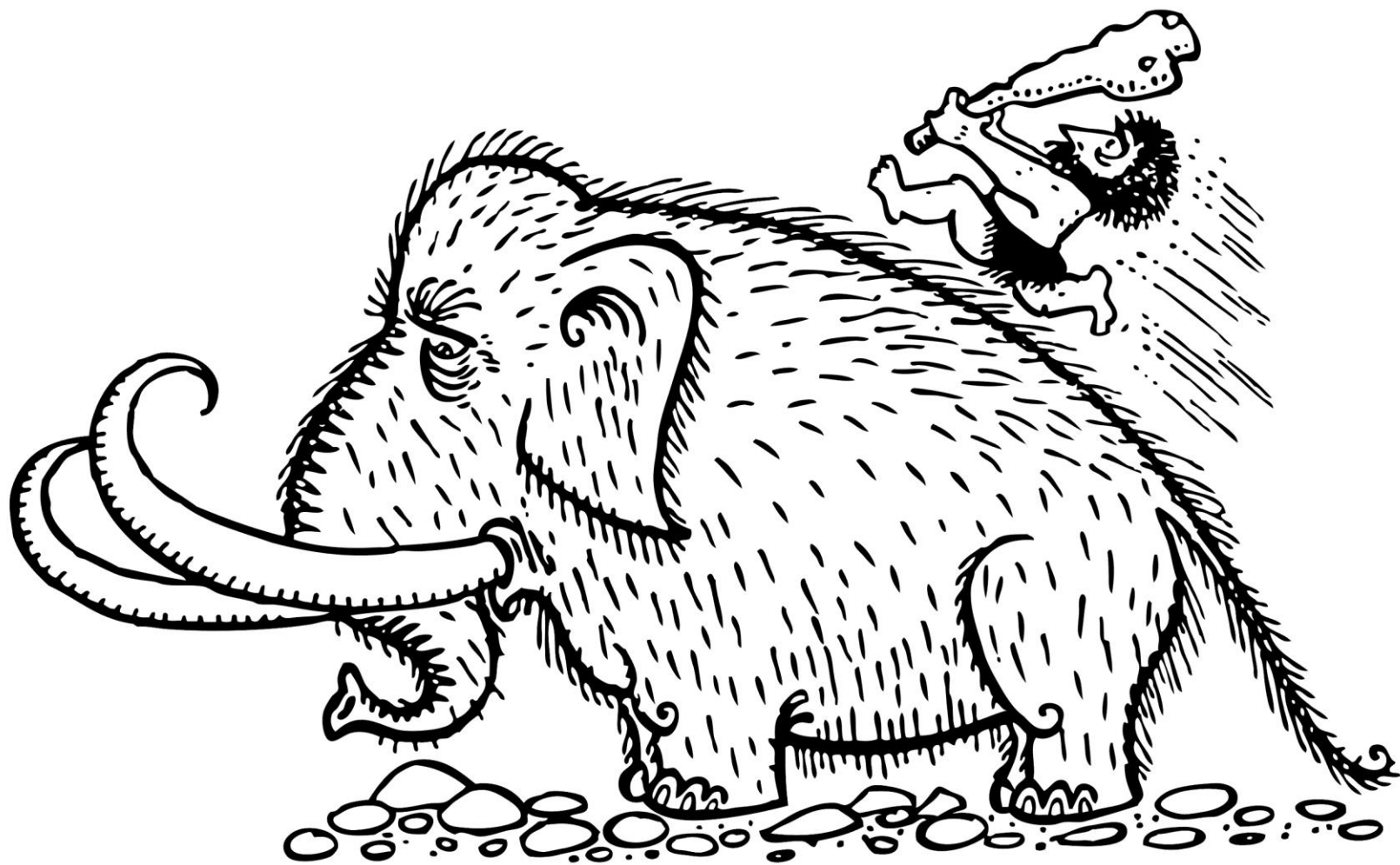
Difficulty in qualifying for Recreation Funding



“(Overland) Emigrant Trail is the only (historic) trail publicly owned by (Nevada) County. Until last year (the County) did nothing in 17 years to protect or develop it. In fact (the County) closed it off to public access. (Overland Emigrant Trail is) currently closed, but (Nevada) County is attempting to go forward with development. They do just enough to not get sued.”

FINDINGS





“(The) County’s shocking lack of adherence to common law understanding of (the) public’s access to established trails, such as the (Overland) Emigrant Trail, has compromised our ability to have an effective County trail system.”

Study Committee Recommendations

BoS acknowledge and accept their central role of leadership as it pertains to Nevada County Parks and Recreation

BoS to make recreation a high priority

Develop and implement an equitable
countywide Parks and Recreation Plan

Correct funding inequities

Open the historic Overland Emigrant Trail

Continually update community on progress

To thank you for your time and attention, we got you these flowers

