



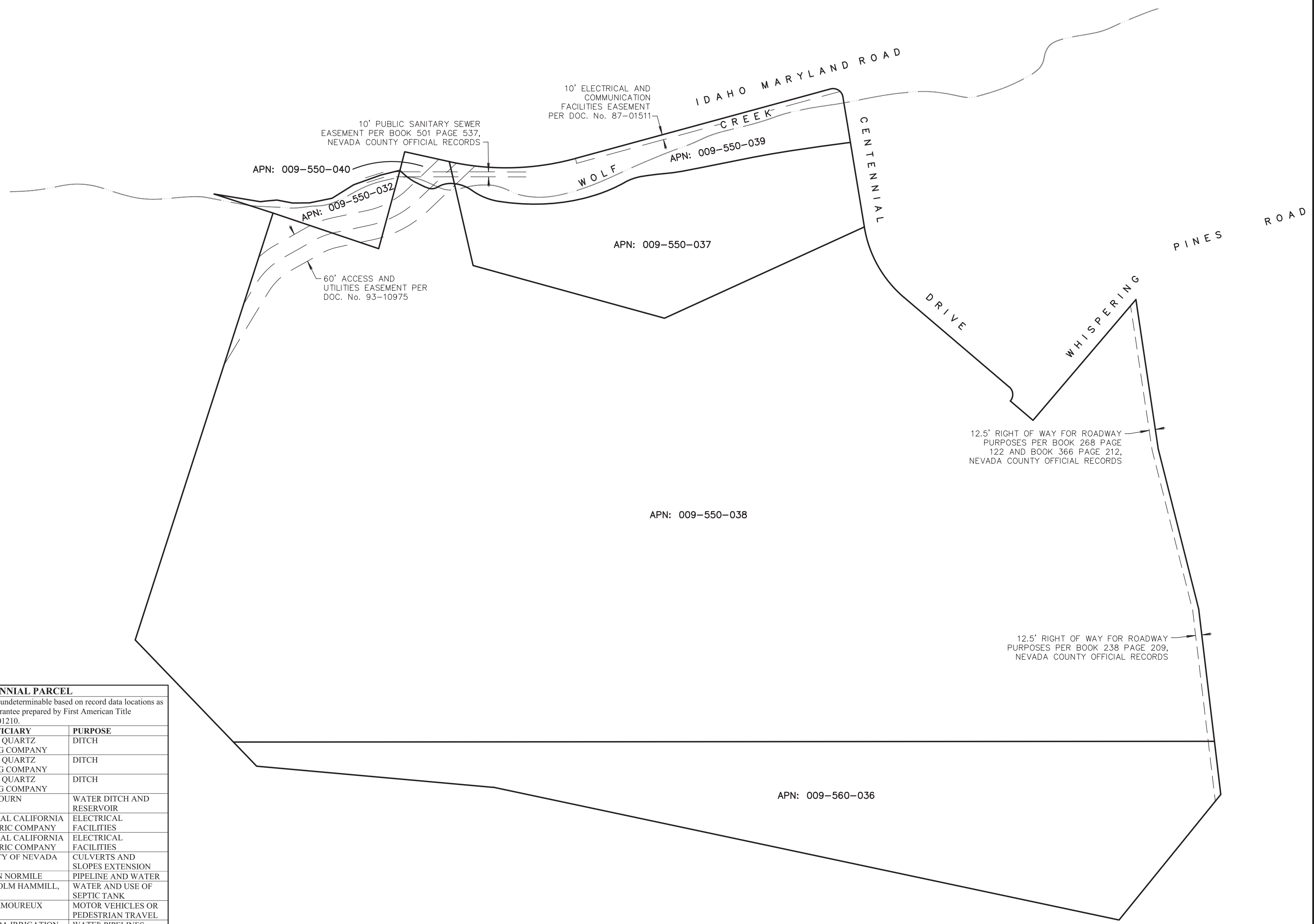
REVISION:	DATE:	DESCRIPTION:

CENTENNIAL SITE  
**RISE GRASS VALLEY INC.**  
SEC. 26, T.16N., R.8E., M.D.M.  
NEVADA COUNTY , CALIFORNIA

**EASEMENTS**

**C-2**

SCALE: 1" = 100'  
CONTOUR INTERVAL: 2'



**CENTENNIAL PARCEL**

The following easement locations are undeterminable based on record data locations as outlined in the Condition of Title Guarantee prepared by First American Title Company Order number 5026900-5801210.

RECORDED	BENEFICIARY	PURPOSE
68 DEEDS 293	IDAHO QUARTZ MINING COMPANY	DITCH
68 DEEDS 324	IDAHO QUARTZ MINING COMPANY	DITCH
68 DEEDS 326	IDAHO QUARTZ MINING COMPANY	DITCH
71 DEEDS 154	W.B. BOURN	WATER DITCH AND RESERVOIR
96 DEEDS 470	CENTRAL CALIFORNIA ELECTRIC COMPANY	ELECTRICAL FACILITIES
100 DEEDS 418	CENTRAL CALIFORNIA ELECTRIC COMPANY	ELECTRICAL FACILITIES
214 OR 431	COUNTY OF NEVADA	CULVERTS AND SLOPES EXTENSION
224 OR 286	VIVIAN NORMILE	PIPELINE AND WATER
227 OR 290	MALCOLM HAMMILL, ET UX	WATER AND USE OF SEPTIC TANK
253 OR 102	R.E. TRMOUREUX	MOTOR VEHICLES OR PEDESTRIAN TRAVEL
280 OR 355	NEVADA IRRIGATION DISTRICT	WATER PIPELINES
276 OR 181	PACIFIC TELEPHONE AND TELEGRAPH COMPANY	COMMUNICATION FACILITIES
320 OR 480	PACIFIC GAS AND ELECTRIC COMPANY	UTILITY FACILITIES

**CENTENNIAL PARCEL**

The following easements locations do not appear to affect the subject parcels based on record data locations as outlined in the Condition of Title Guarantee prepared by First American Title Company Order number 5026900-5801210.

RECORDED	BENEFICIARY	PURPOSE
366 DEEDS 212	SUM-GOLD CORPORATION	60' ROAD AND UTILITY
475 DEEDS 234	THE COUNTY OF NEVADA	PUBLIC SANITARY SEWER