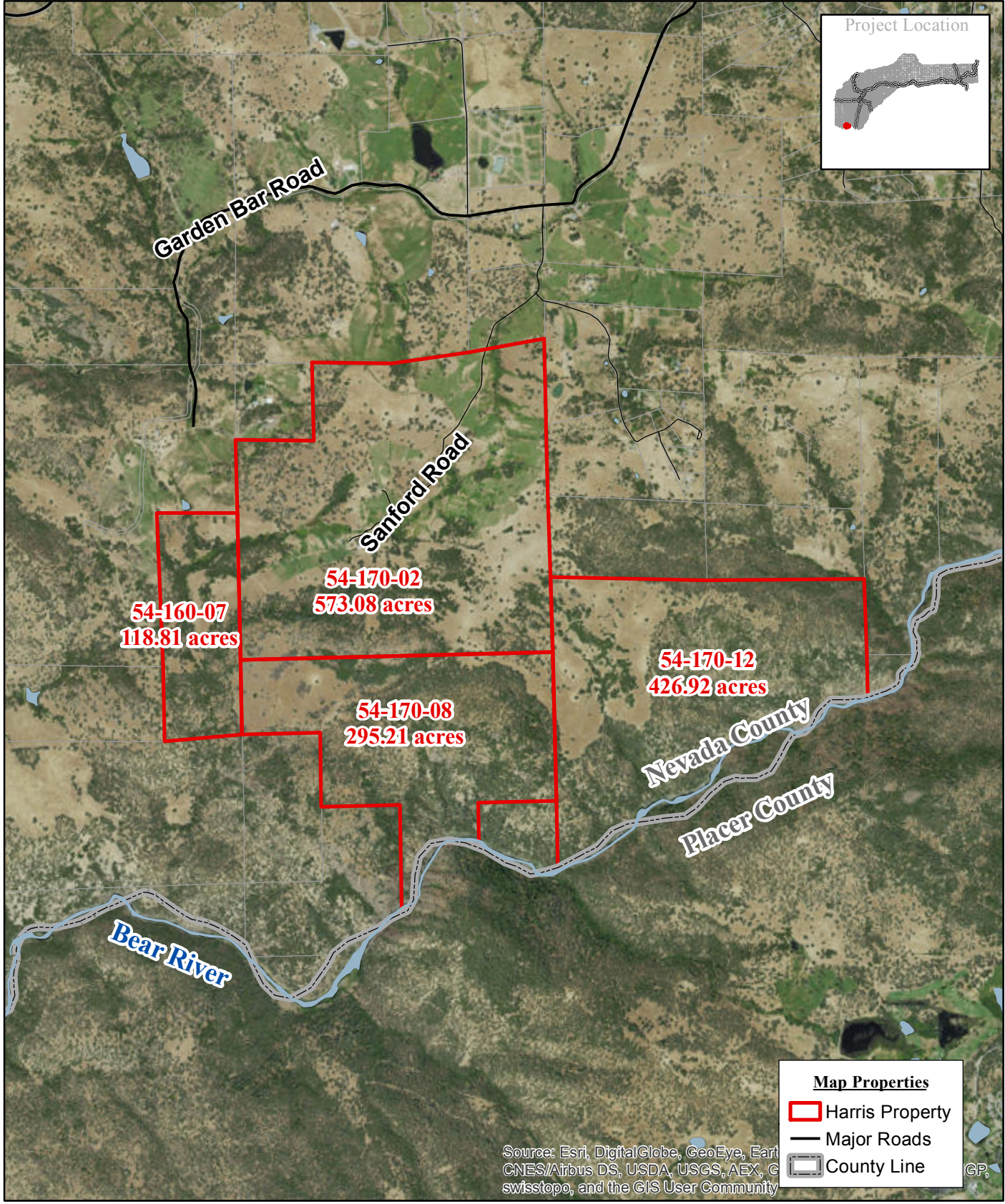
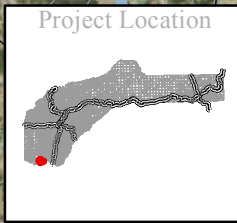


Harris Williamson Act Contract AG16-001

Aerial View



54-160-07
118.81 acres

54-170-02
573.08 acres

54-170-08
295.21 acres

54-170-12
426.92 acres

Nevada County
Placer County

Bear River

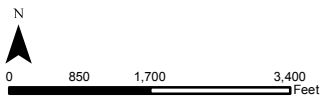
Garden Bar Road

Sanford Road

Map Properties

- Harris Property
- Major Roads
- County Line

Source: Esri, DigitalGlobe, GeoEye, Earth
CNES/Airbus DS, USDA, USGS, AEX, G
swisstopo, and the GIS User Community



Every reasonable effort has been made to assure the accuracy of the maps and data provided; nevertheless, some information may not be accurate. The County of Nevada assumes no responsibility arising from use of this information. THE MAPS AND ASSOCIATED DATA ARE PROVIDED WITHOUT WARRANTY OF ANY KIND, either expressed or implied, including but not limited to, the implied warranties of merchantability and fitness for a particular purpose. Before making decisions using the information provided on this map, contact the Nevada County Public Counter staff to confirm the validity of the data provided.