

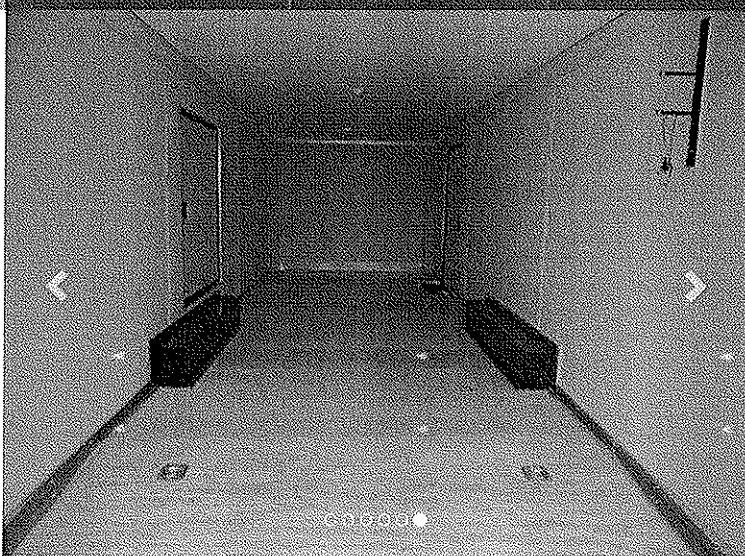
SEARCH TRAILERS

SERVICE & REPAIR

PARTS & ACCESSORIES

WHY INTERSTATE

STORE LOCATOR



8.5 X 24 Interstate SuperCoach Race Trailer

Trailer Located at: [TrailersPlus Lodi](#)

2019 Model Year configuration and pricing. Extra height, reinforced, walls and ramp. 6 inch ATP Exterior Trim, Roof Vent, Side loading light, 2nd set LED Tail lights, ATP Fenders, Dome Light, (2) Rear Loading lights with Switch, White Walls. American made Dexter axles. 48 X 54 RV Side Door over wheel well for Car Carriers. 15 inch of finished floor. Door Grab Handles. Silver (Charcoal) Exterior Color (per LTF). Sand Pad for Jack. Dexter Removable Spindle, save thousands on repair.. Self Adjusting Brakes. Ensure proper stopping distance every time you use the brakes without manual adjustments.. Trailer: 70561

MSRP: \$22220 Sale Price: \$13799

Financing Available from \$282.39/mo.

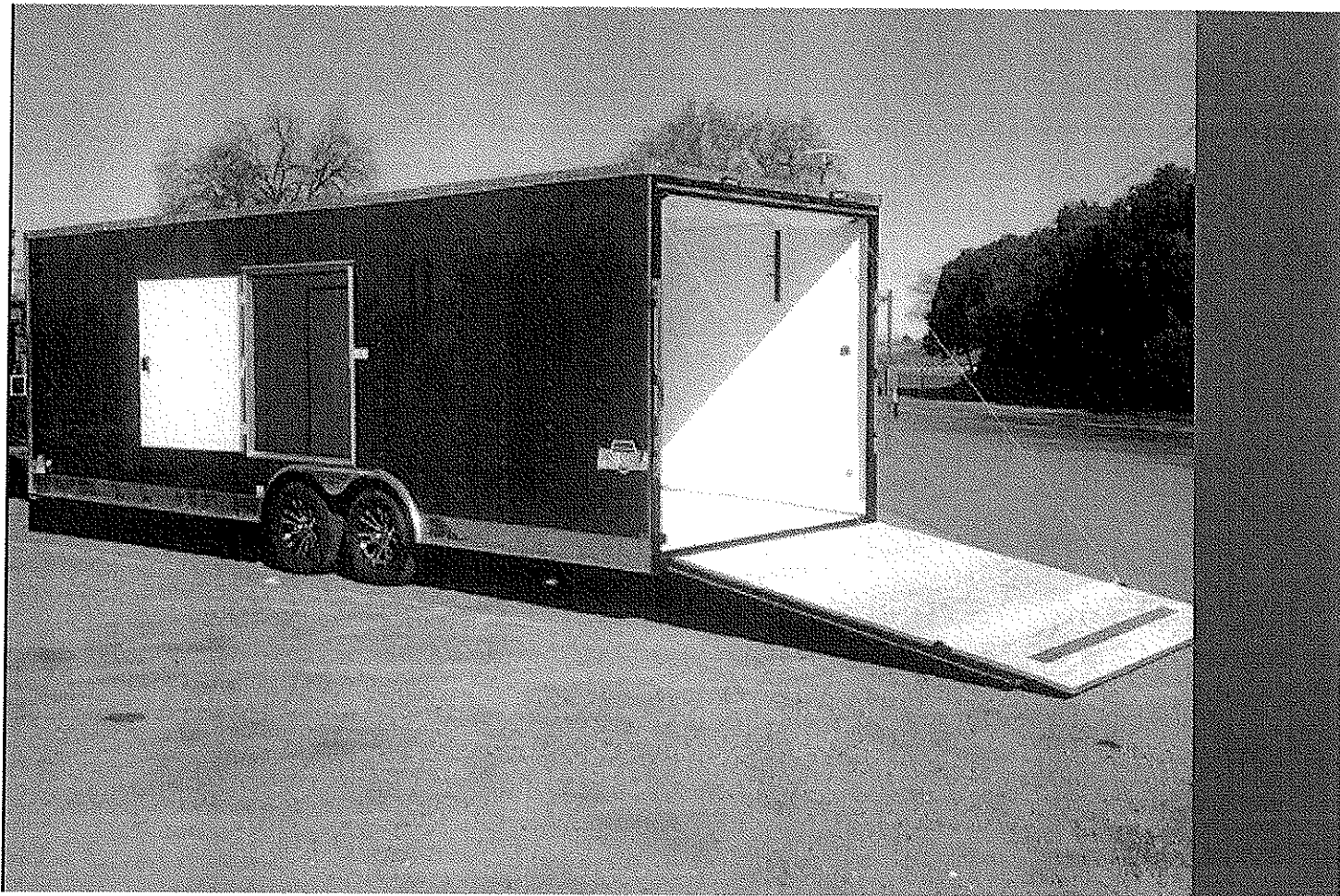
Add to Cart

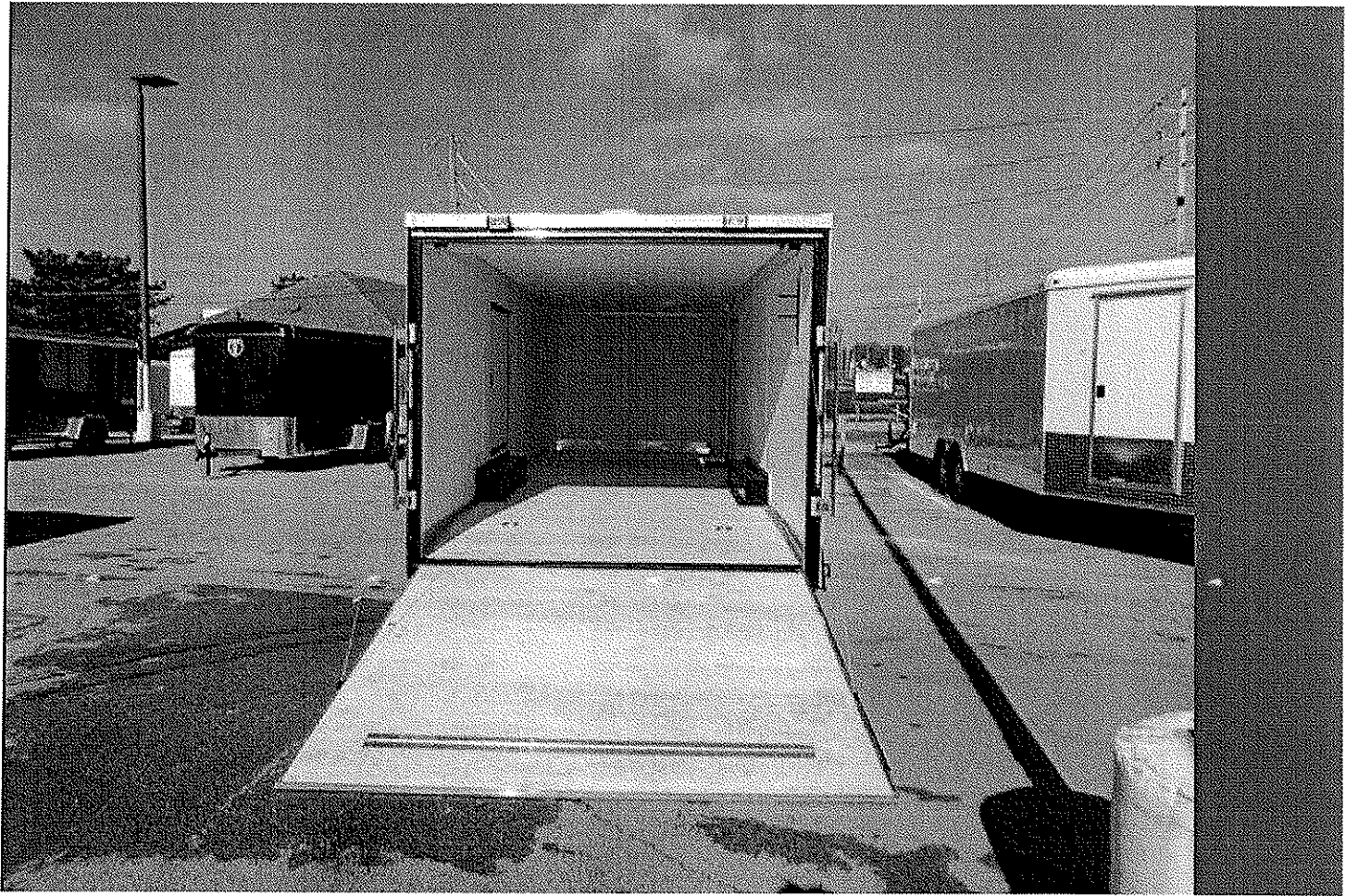
Reserve Trailer

Email

Schedule an Appointment

Print





SEARCH TRAILERS

SERVICE & REPAIR

PARTS & ACCESSORIES

