



*Nevada County  
Sheriff's Office  
Indoor Firearms  
Range*

# Mission Statement



*The Nevada County Sheriff's Office is committed to providing excellence in public service in partnership with our community.*

*Honor, Integrity, Professionalism,  
Loyalty*

# Why Is It Needed? – Training Is Necessary

AND



- POST Standards, BSCC Standards, and Policy drive how often we train with firearms. (POST Regulation 1005(d), PC 832)
- Minimum of 4 times per year per staff member authorized to carry a firearm. (141 positions across multiple shifts and classifications)
- Our SED team trains twice per month which is POST recommended standard.
- Qualification required for new hires prior to deployment in the field.
- We also have other courses such as a two-day rifle course and would host others if we had a facility. (Penal Code 33220(b), POST Reg 1081)

# Why Is It Needed? – Liability and Safety

AND



- A well-trained staff are better for the community.
  - Safer for residents and our staff
- Increased opportunities for shoot/don't shoot scenarios. Currently limited to static targets now.
- Increased focus on law enforcement shootings and very large settlements in recent court cases across the country.
- During litigation training records are heavily scrutinized.



# Why Is It Needed? – Lack of Training Time

ANE

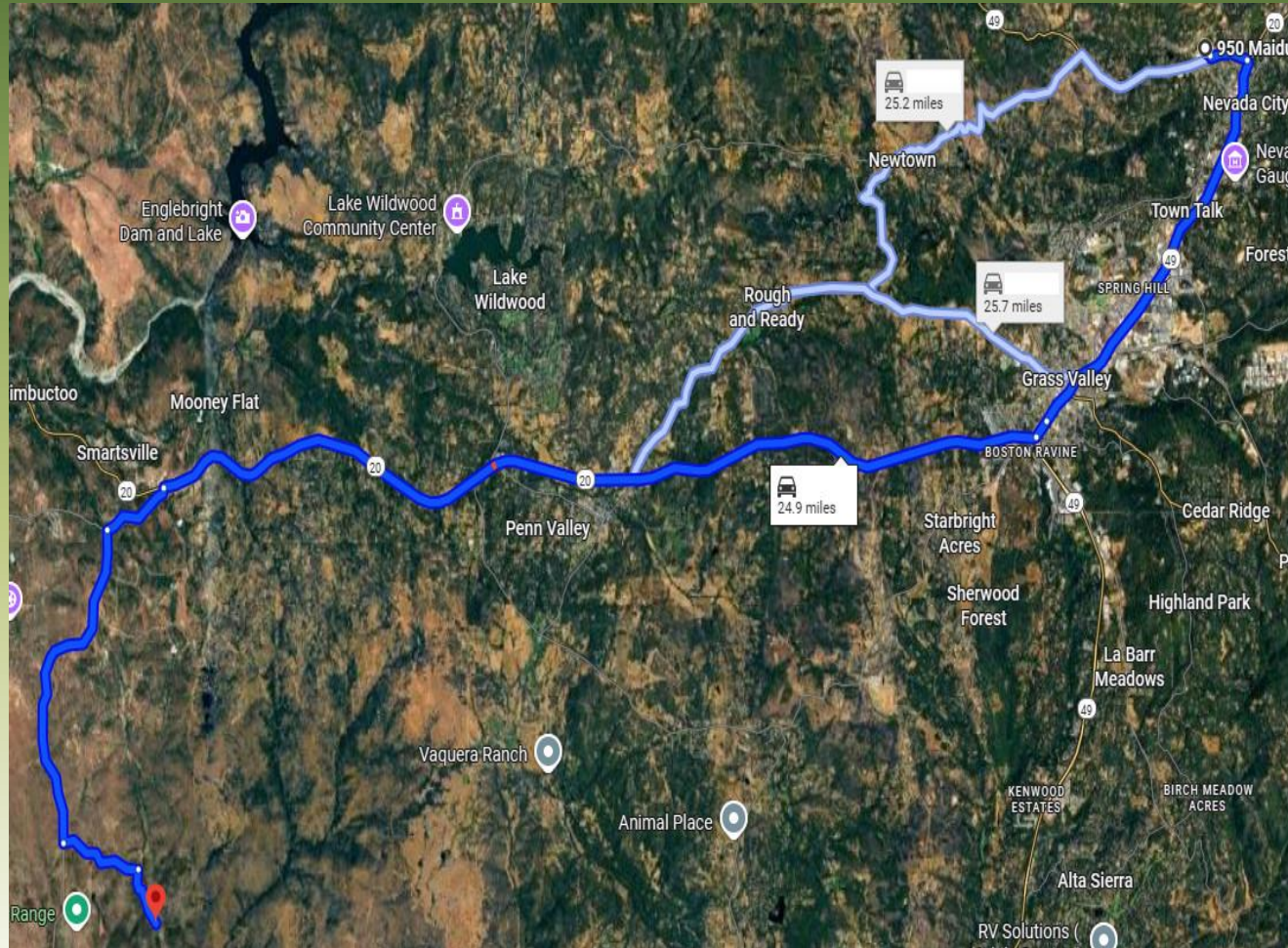


- Limited use at GVPD range
  - Multiple agencies compete for time
- Limited use at Fish and Wildlife Range
  - Multiple agencies compete for time
- Local business is very generous but must maintain their own business hours which limits our use
- Very little flexibility in training schedule due to lack of range time available



# Why Is It Needed? – Lack of Facilities

AND



- Current primary range is limited:
- No water or bathrooms
- Is approximately 45-minute drive leading to increased overtime costs
- No radio or cellular communication
- Static targets only
- Sometimes have to mow/weed eat prior to use due to fire risk
- Weather dependent
- No shade



# Concerns

LINE



- Noise – Mitigated by design
- Contamination – Mitigated by filtration, lead testing for range instructors
- Safety – Operating procedures developed in conjunction with Risk Management etc
- Costs – Mitigated by special revenue funds and possible directed funding request



# WHERE ARE THEY?



AUBURN



WHERE ARE THEY?



ROCKLIN



WHERE ARE THEY?

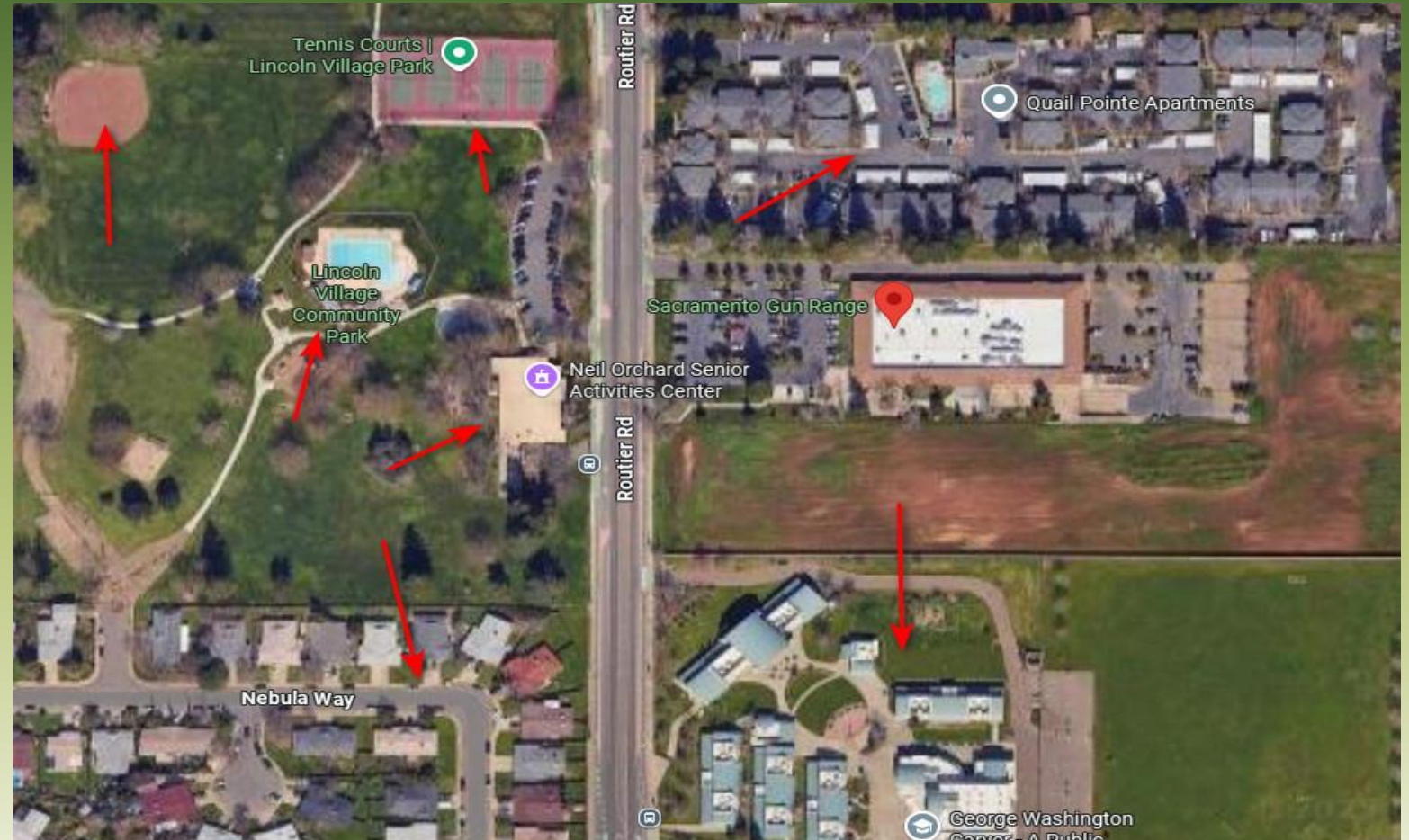
EL DORADO





# WHERE ARE THEY?

## SACRAMENTO



# Why Not Build A New Outdoor Range?

AND



- Environmental concerns with a difficult approval process
- Likely locations have no power, water or infrastructure, similar to current range
- Limited training options
- Limited by weather
- Maintenance concerns
- Fire concerns
- Noise concerns



# Process So Far

## LINE

- Research started April 2024. Desired for over 25 years
- Scope development October 2024
- Notice to Nevada City February 2025
- 3 Vendors invited to submit design/build proposal April 2025 after BOS approval to solicit
- Vendors scored in May 2025
- JKAE and Modern selected based upon scoring
- Site development and future planning July 2025
- Site finalization and BOS presentation September 2025

# T I M E L I N E

PHASE	EXPECTED COMPLETION DATE
PRELIMINARY PLANS	9/25-11/25
COUNTY REVIEW OF PP	12/25
CEQA REVIEW	11/25-4/26
NEPA REVIEW	4/26-5/26
WORKING DRAWINGS	1/26-3/26
AGENCY APPROVALS	05/26-09/26
PHASE 1: SITE	05/26-06/26
PHASE 2: BUILDING	05/26-09/26
CONSTRUCTION	08/26-08/27
PHASE 1: SITE	08/26
PHASE 2: BUILDING	10/26
COMMISSIONING	08/27-09/27
OCCUPANCY	09/27-10/27



# Primary Range Components

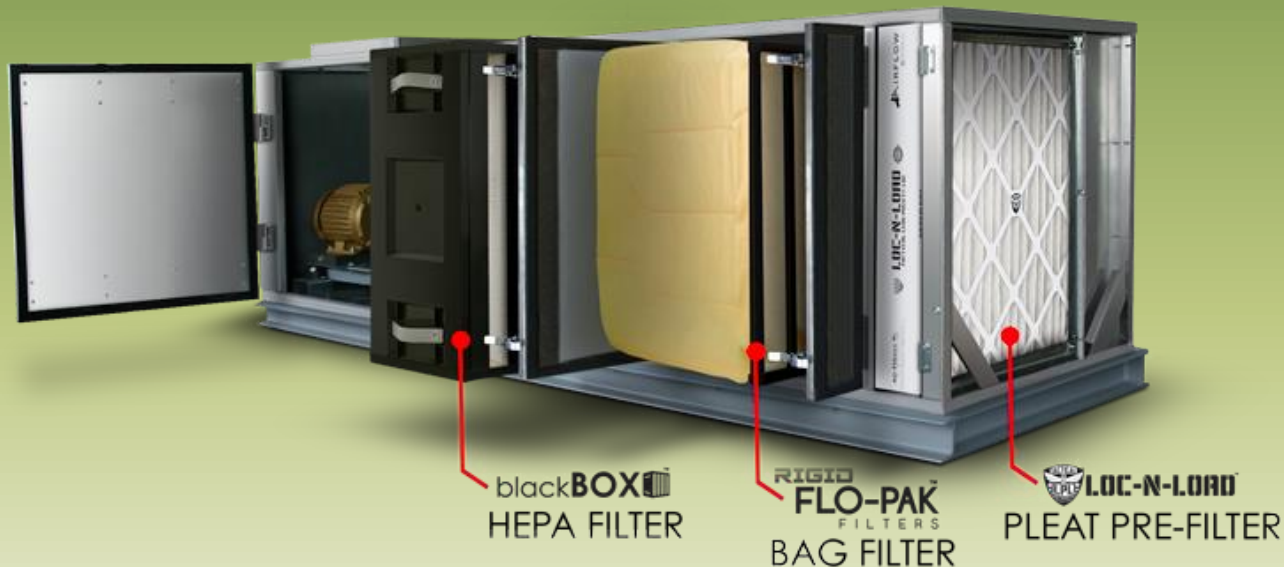
LINE



- Meet or exceed all noise requirements
- 12 lanes, 50 yards
- Vehicle capable
- Capable of capturing .308 caliber
- Rotating targets
- Running man target
- Classroom for 30
- Handwashing stations and restrooms
- Firearms cleaning stations
- Armory
- Rubber bullet trap

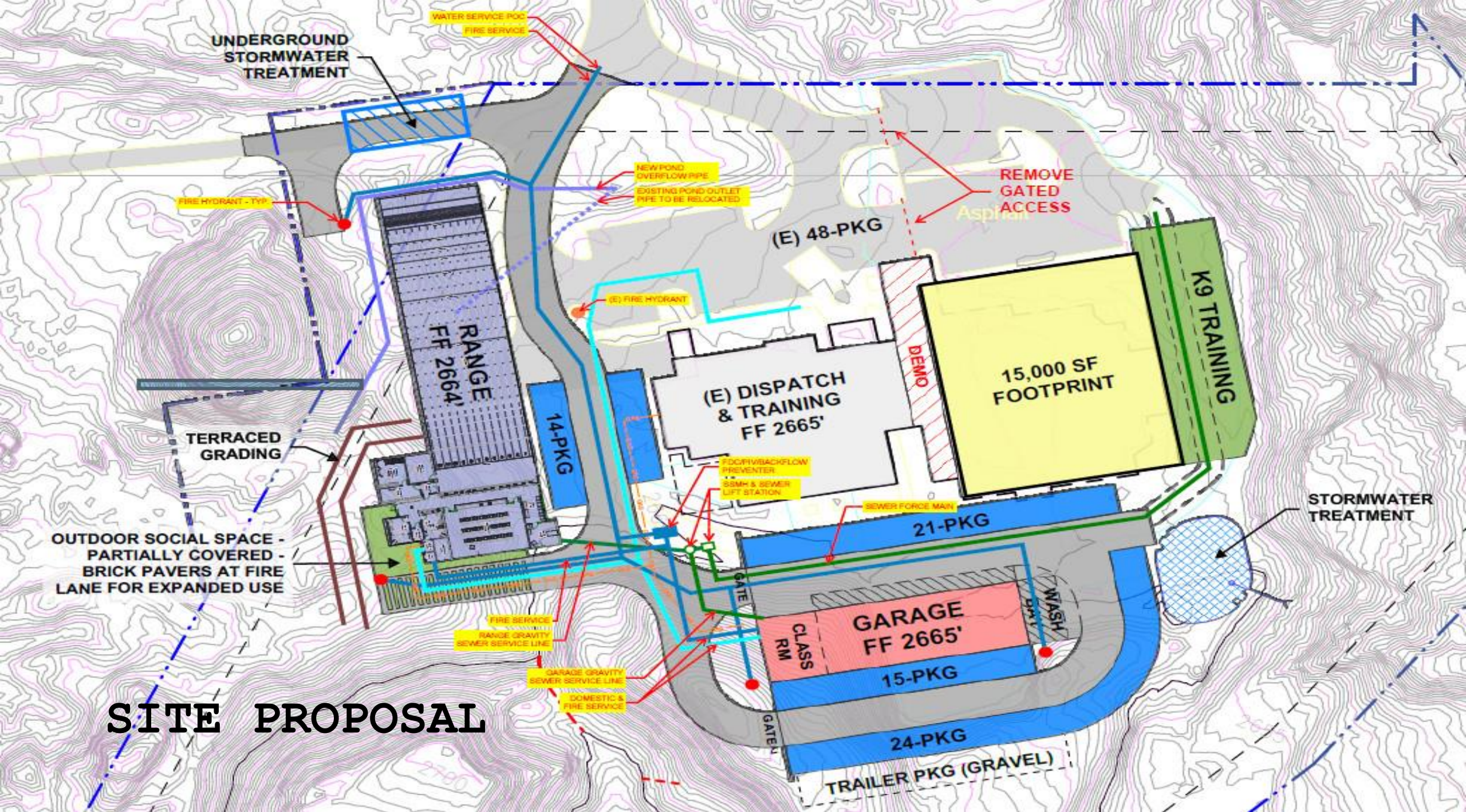
# Ongoing Maintenance

LINE



- Rubber trap will contain enough lead to pay for lead remediation costs which is usually done every 2-3 years. Range will not be operational for 2 days while this is going on.
- Prefilters replaced every 6 months or so ~\$4,000/yr
- Hepa filters every 1.5-2 years. ~\$10,000 per replacement.
- Annual maintenance of targets
- Expended brass recycles for \$2.40 per pound currently and offsets costs of filters and annual maintenance.
- Cost recovery from hosting other agencies





# SITE PROPOSAL



# Exterior

ANL





# Classroom

FILE



# Firearms Cleaning Stations

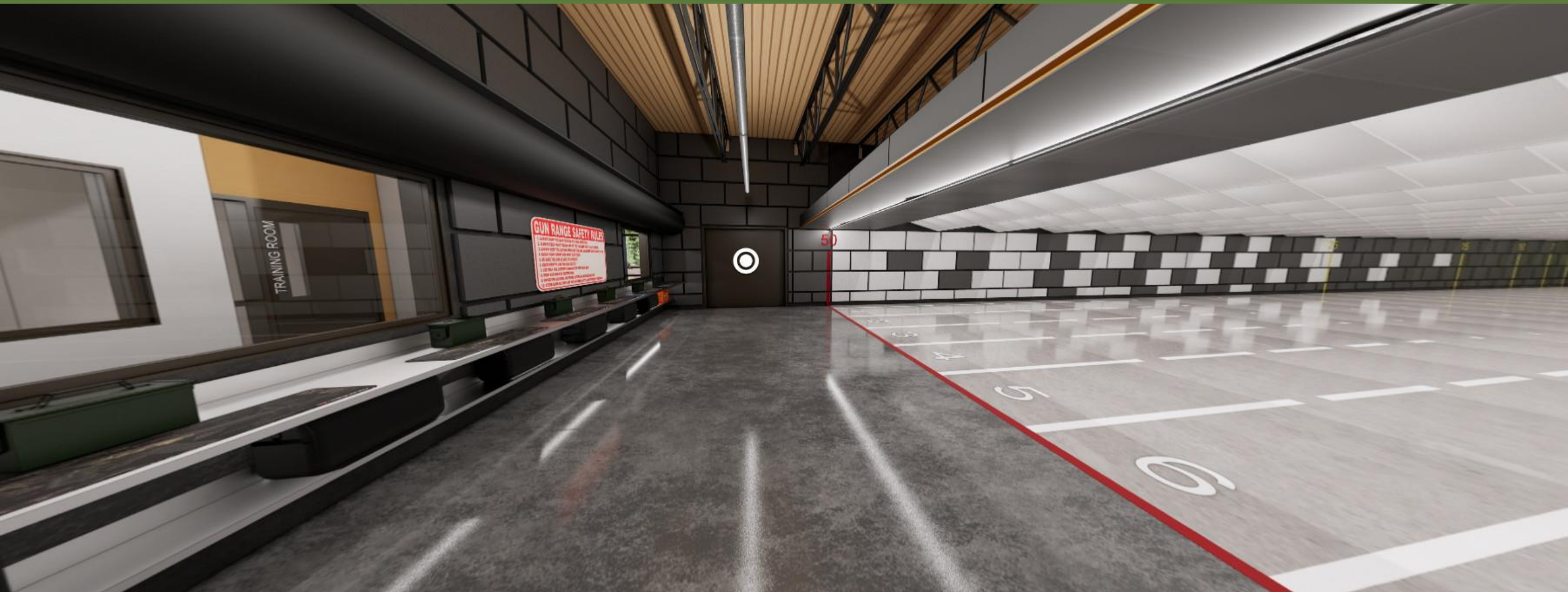
ANE





# Range

ARL



# Range

LINE





# Finance

ANAL

Sheriff Office Regional Training Facility Cost Summary	
Phase I (currently funded)	
Indoor Shooting Range	\$12,979,000.00
Full Tactical Baffle System	\$270,000.00
Range Ceiling Tiles	\$42,000.00
Scheme D Design layout and Additional Parking	\$3,175,000.00
Contingency	\$367,500.00
Total cost for Phase I (currently funded)	
Phase II (pending federal earmark funding)	
Search and Rescue Garage and Classroom (shell structure only)	\$1,075,000.00
Search and Rescue space improvements	\$975,000.00
Search and Rescue Fire Sprinklers	\$80,000.00
Contingency	\$213,000.00
Total cost for Phase II (pending funding)	
Total Project Cost of Phase I and Phase II	
Contingency Allowance of Phase I and Phase II	
Total Board Requested Amount	



Questions?

