



COVID-19 UPDATE

June 23, 2020

Jill Blake, Public Health Director

Dr. Ken Cutler, Public Health Officer



Presentation Overview

Where we are in rolling out of the State's
Resilience Roadmap

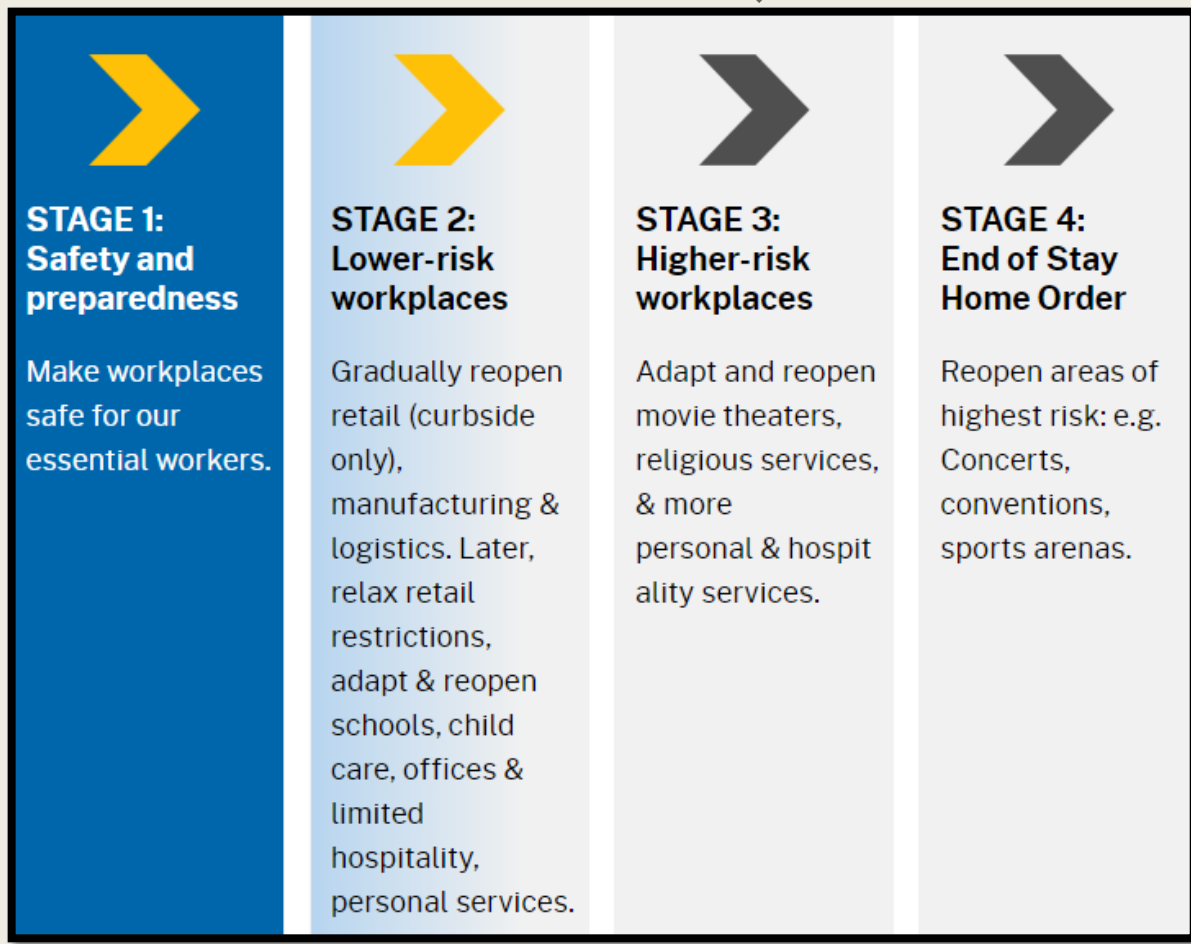
COVID – Current Data

Back to the Basics

Face Coverings

Contact Tracing

Questions



RESILIENCE ROADMAP

[\(https://covid19.ca.gov/roadmap/\)](https://covid19.ca.gov/roadmap/)



Stage 3: Higher-Risk Workplaces

Process

1. Phase in higher-risk workplaces, beginning with limited personal care and recreational venues
2. Monitor critical indicators and alter scope of reopening if necessary to protect public health and safety
3. State releases guidance addressing how business can reopen
4. Local Health Officer determines when businesses can reopen after reviewing epidemiological data
5. NCPHD updates its Reopen Nevada County Plan
6. Businesses reopen after modifications are made and individual plans are in place



Stages 2-3: Sectors Currently Allowed to Reopen in Nevada County

Day Camps

General Business, Office

Gyms and Fitness Centers

Hair Salons and Barbershops

Hotels (for tourism)

Manufacturing

Movie Theaters and Family Entertainment Centers

Music, Film, and TV Production

Personal Services

Personal Care Services

Places of Worship

Professional Sports (w/out live audiences)

Restaurants

Retail

Schools and Daycare

Tribal Casinos

Wineries and Bars

Zoos and Museums



COVID-19: BY THE NUMBERS



California		United States	
184,716 Cases	5,565 Deaths	2,313,445 Cases	120,451 Deaths
			640,198 Recovered

COVID-19: STATE AND NATIONAL

AS OF 06/22/20

Nevada County

5,643
Tested

82
Confirmed Cases

24
West County
58
East County

55
Recovered

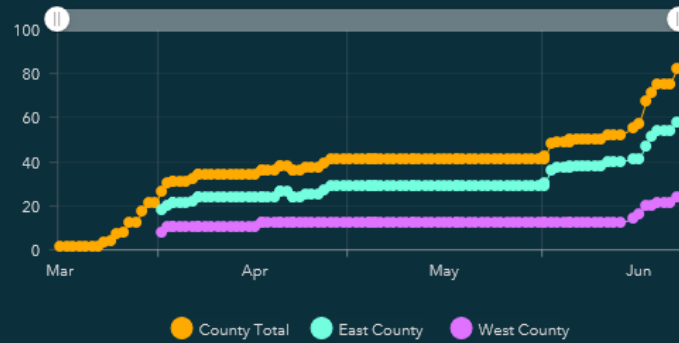
1
Deaths

26
Active Cases

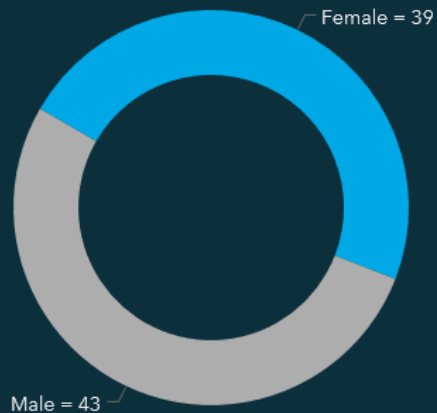
Cases by Mode of Transmission



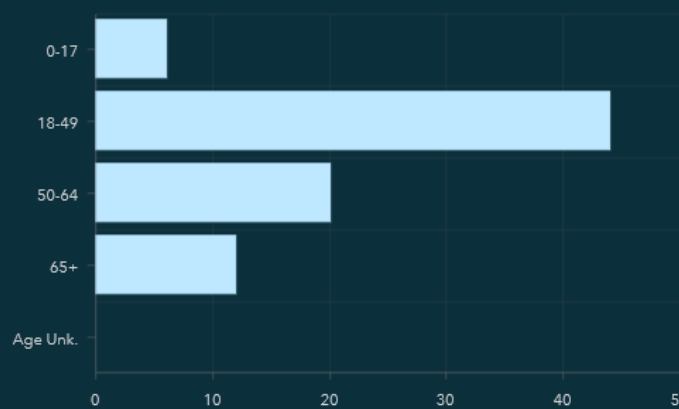
Total Confirmed Cases Over Time



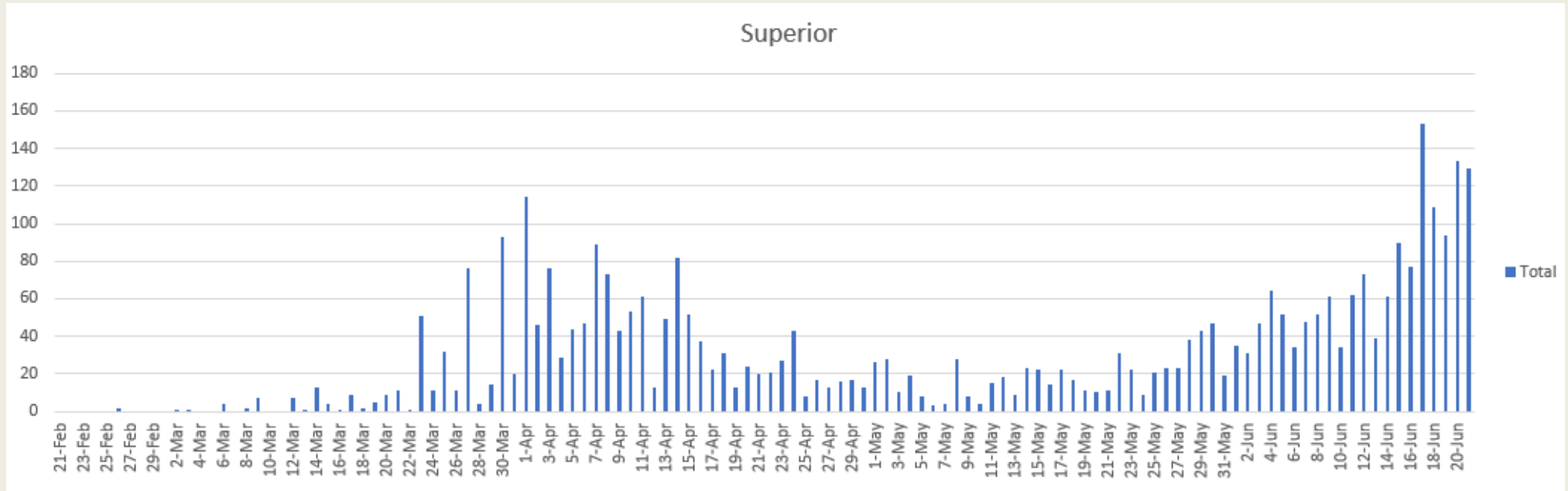
Cases by Gender



Cases by Age



COVID-19:
NUMBERS AND
TRENDS IN
NEVADA COUNTY
AS OF 06/22/20



COVID-19: NUMBERS AND TRENDS IN THE SIERRA – SAC VALLEY REGION

AS OF 06/21/20



- Physical/social distancing – 6 ft.
- Hand washing – 20 seconds
- Face coverings when in public and likely to encounter others
- Get rest and maintain a healthy lifestyle to keep your immune system strong
- Stay home when you are sick
- Patronize businesses that have taken appropriate measures to decrease risk of infection
- Protect those most susceptible to serious illness
- Avoid nonessential travel and gatherings



State Guidance on Face Coverings

- Cloth face coverings or masks can help reduce the spread of coronavirus especially when combined with physical distancing and frequent hand washing.
- Starting June 18, Californians must wear face coverings in common and public indoor spaces and outdoors when distancing is not possible. Learn more about the guidance and limited exceptions at https://www.cdph.ca.gov/Programs/CID/DCDC/CDPH%20Document%20Library/COVID-19/Guidance-for-Face-Coverings_06-18-2020.pdf



Guidance Highlights

- Our collective actions matter
- We continue to learn about COVID-19
- The use of face coverings can limit the number of infected droplets when speaking, coughing, sneezing
- To be worn in high-risk situations, including:
 - Inside or in line to enter any indoor public space
 - Obtaining healthcare services
 - Public transit and private car service
 - Workplace





Contact Tracing

Is a simple concept that is vital to stopping the spread and/or stopping the pace of infectious diseases including Measles, Ebola, and COVID-19.

When done correctly, it can save lives by helping us diagnose patients earlier, improving the likelihood they'll access the care they need *and* reducing the chance they'll spread the virus to others.

Here's How it Works:

#1: Once a patient is confirmed to have COVID-19, this patient becomes an "Index Case."



#2: A public health nurse reaches out to this person and talks with them to check on how they are doing, assist them with any immediate needs they may have, including access to health care, food, and other resources.

Through conversation, the nurse then works with the patient to identify who may have been exposed to the virus while they were infectious.





#3: Then the nurse calls and talks with the patient's close contacts and screens them for symptoms of disease.

Close contacts are placed in quarantine and are asked to monitor their health and watch for symptoms. Public health staff check in with them daily either via phone or text.



#4: If a contact shows symptoms of the disease, they are then considered a “suspected case” and will be tested for the disease and placed into isolation.

If the disease is confirmed through lab testing, then this patient’s contacts will be traced and screened for symptoms of disease as well. Hopefully, the quarantine will have prevented the number of close contacts.

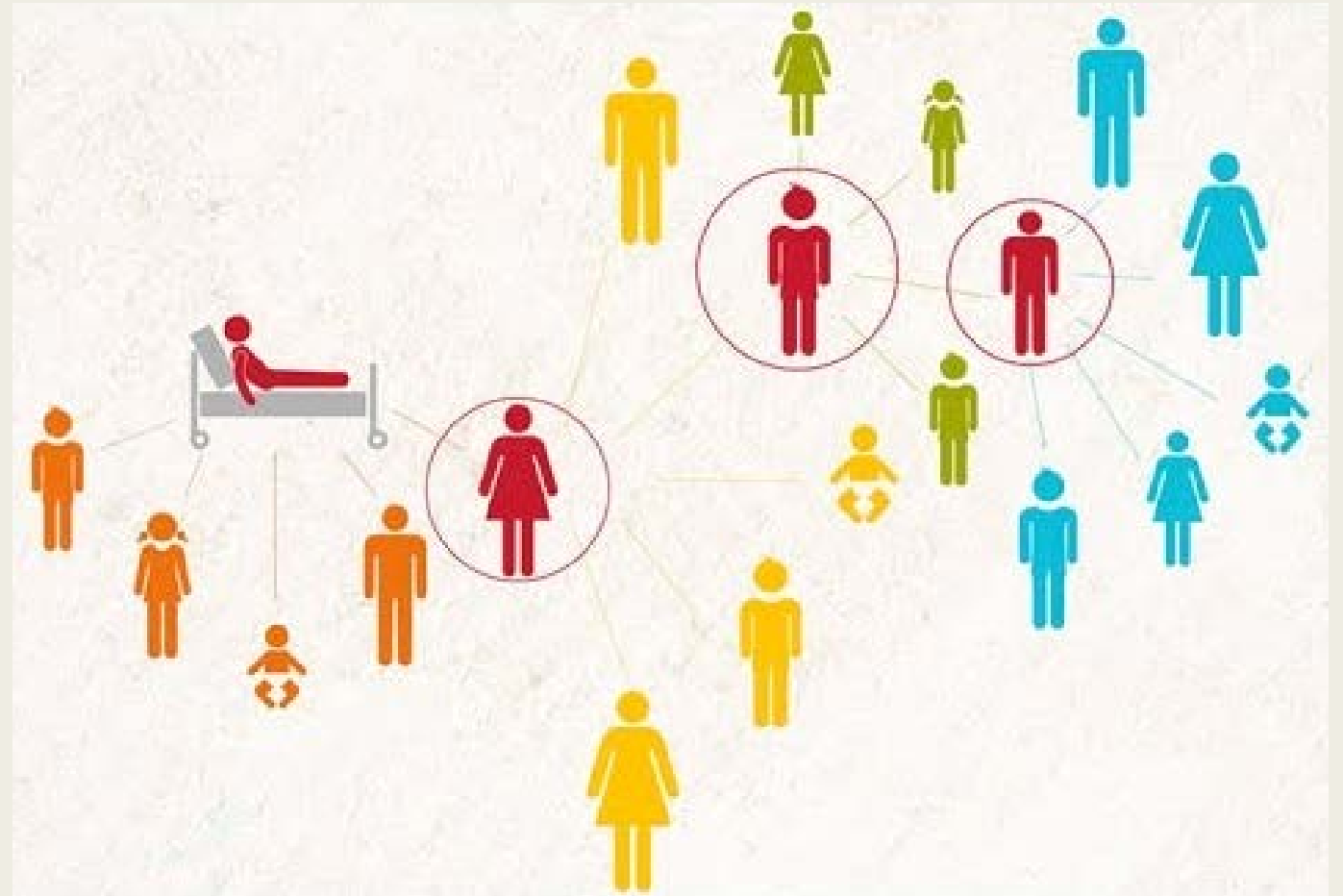




- If a contact **does not** show signs or symptoms of the disease, they will still be monitored by a nurse for the duration of the quarantine period, which is the length of the disease's incubation period. For COVID-19, that period is 14 days.



- This process will continue until all potential cases are identified.





NEVADA COUNTY
Public Health

QUESTIONS?