



2022 Emergency Winter Storm Green Waste Site Operations

LOCATION

12625 Brunswick Rd, Grass Valley; APN: 006-441-003 & -004.

HOURS OF OPERATION

- Green Waste Collection will take place March 11-13, March 25-27, & April 8-10, 9am-3pm.

EMERGENCY STORM DEBRIS FIRE HAZARD MITIGATION

On Friday, Saturday, & Sunday of each week and at the dates noted above, collected green waste will be stored on hardscape areas as shown on the site maps included. This will be held separate from the Emergency Storm Debris collection that the Department of Public Works will be storing and processing from debris collected exclusively from the public rights-of-way. The material collected will be similar in composition to that of burn piles commonly seen on residential properties during seasonal clearing activities, though piles may be larger due to the December 2021 winter storm event. Under separate Contract with the County a Water Tender will be on site when the piles are being moved, or ground down, should a spark ignite a pile. Clearance will also be maintained away from any site vegetation to help ensure access around the entirety of piles during operations.

During the following weekdays of each event and under separate Contract with the County the material will be ground down and hauled offsite to an approved facility. Pile heights will be sufficiently limited to reduce the compression load, and therefore reduce the risk of combustion. It is anticipated that the bulk of the reduced matter will remain on the ground not more than two days, which will be too early for accumulated heat from the decomposition process. The Site Supervisor, and/or vendor, will be equipped with a REOTEMP Heavy Duty Compost 48 in 200 Degrees Fahrenheit Thermometer or equal to monitor pile temperature and instructed to take readings at a minimum of 2 times each day if the pile height is greater than 3 feet. In the event of a fire the Site Supervisors, and/or vendor will contact 911 and coordinate with the local fire agency to ensure the fire is fully extinguished.

Under separate Contract with the County all material received including slash and wood rounds will be processed and chipped. Any logs/rounds greater than 28" in diameter will be split with a hydraulic shear attached to an excavator prior to being fed into the grinder. This will all occur within the green waste area shown on the site plan below. Receipts will be recorded for amounts of material processed and taken offsite to an approved biomass facility. Records will be organized onsite and managed by Craig Griesbach (contact below) upon request of documentation.

The Ophir Hill Fire Station is 1.4 miles away and the Cal Fire Emergency Command Center is 2.2 miles away from the site. Both departments will be notified of the event dates, planned operations, and will have given approval prior to the events occurring. Phones will be on site, with a list of emergency numbers to call in the event of an emergency.

This activity falls under the following exclusion:

14 CCT, Section 17855 (5) The handling of compostable materials is an excluded activity if: (I) the activity is the storage of yard trimmings at a publicly designated site for the collection of lot clearing necessary for fire protection provided that the public agency designating the site has notified the fire protection agency.

SCREENING PROCESS

At time of arrival, staff and/or volunteer will confirm and document the address of the private property owner and verify this against the list during points source validation based on disaster assessment maps. Only property owners in the impacted damage areas would be permitted to use the site. Exemption may be granted on a limited basis if the property owner can explain the discrepancy. The address the material originated from and estimated quantity in cubic yards will be recorded as well as a photograph of the debris. The property owner will then unload the debris at the approved site location. Should unload assistance be required, Fire Safe Council staff will assist. All screening documentation will be provided along with a summary report at the end of each event weekend. Expected storm debris may include associated slash from trees/shrubs, wood rounds of various sizes, and other green waste debris caused by the December 2021 Winter Storms. It is anticipated that a maximum of 1,000 cubic yards/ 300 tons of material will be received daily.

If property owners bring ineligible material to the site, such as construction/demolition debris or municipal garbage, they will be directed to take such debris to the McCourtney Road transfer station.

RUNOFF

The Brunswick site sits on a asphalt pads located toward the lot line adjacent to Brunswick Road, at sufficient distance from any waterways. Rainfall will likely be absorbed by green waste or processed green waste. Loads will be screened for invasive species to prevent propagation of such.

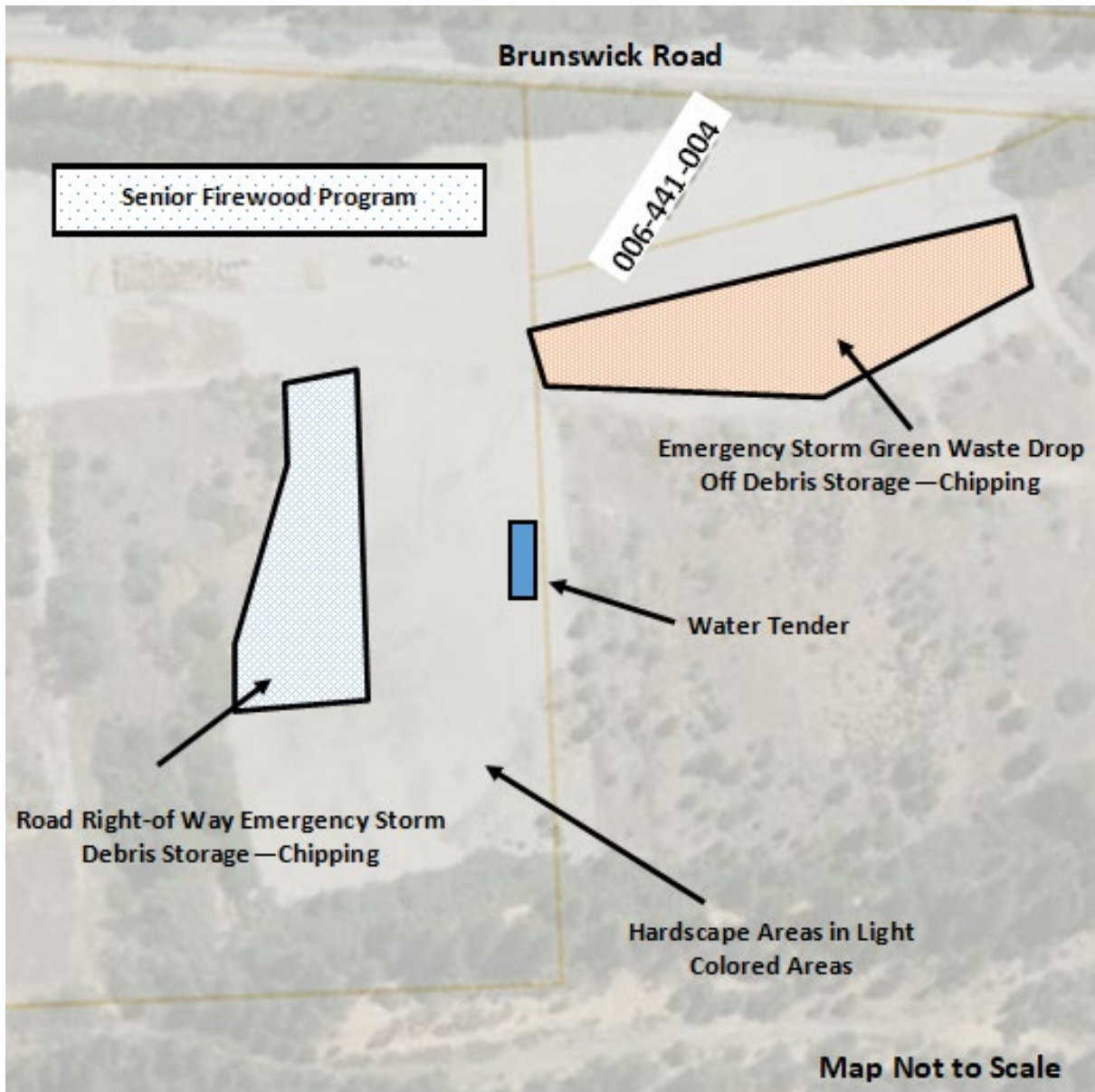
SECURITY

- The site has fencing and locked gates to secure the sites. Padlocks will be on the gates for the owners of the lot, and for the Fire Safe Council of Nevada County. There will be an additional lock at the site location for Gold Country Community Services to access their Senior Firewood Program.
- Photos will be taken before and after each collection day to document pile size and spot any illegal dumping. During non-operational hours, trail cameras will be positioned to monitor site access.
- Site Supervisors will be instructed to secure portable toilets, and all supplies prior to each event.
- Vendors will be instructed to park heavy equipment behind locked gates and have the responsibility of securing their own equipment in the areas marked "Green Waste Overflow" on each site diagram.
- Contractor will notify the Nevada County Sheriffs Office and Grass Valley Police Department three days prior to each event weekend providing them notice of the event and possible increased traffic at the Brunswick Road and Bennett Street locations.

SITE PLANS

Site and traffic plans are attached for reference. Prepared by: Craig Griesbach, Director of Building, County of Nevada CDA, 530-913-1583, craig.griesbach@co.nevada.ca.us and Jamie Jones, Executive Director, Fire Safe Council of Nevada County, 530-264-6661, jamie@areyoufiresafe.com.

Storm Emergency Green Waste Collection Site Plan



Emergency Storm Green Waste Traffic Plan



Cones

Cones will be placed along a 100-foot route marked with a dotted line in the site plan above. Traffic will proceed entering from Bennett Street and staging on the site property and will exit onto Brunswick Road via a right turn only.

Signs

A banner will be posted for a week prior, and during the event, to alert the community of the increased traffic. A variable message sign will be placed one week in advance at the location shown in the image below, to alert the community of increased traffic, as well as through other channels such as social media.

Directing Traffic

Variable Message Sign "Slow" Hazard Sign as shown in the image below. A volunteer will be directing traffic at the entrance to the event, according to plan.



Contacts

Craig Griesbach
Director of Building – Project Lead
County of Nevada
530-265-1583 (office)
530-913-1583 (cell)
craig.griesbach@co.nevada.ca.us

Jamie Jones
Executive Director, CEO
Fire Safe Council of Nevada County
530-272-1122 (office)
530-264-6661 (cell)
jamie@areyoufiresafe.com

Donald Hoffer
Robinson Enterprises Inc.
530-913-2258
dchoffler@gmail.com