

**CURRENT AIR PHOTO**

**1947 HISTORIC AIR PHOTO**

**LEGEND**

- Area of Disturbance
- Wetland mapped on Centennial Site
- Centennial Industrial Site - Boundary
- Elevation Contour Line - 10 foot intervals
- Elevation Contour Line - 2 foot intervals
- Creek - Perennial
- Creek - Intermittent
- Creek - Ephemeral
- Culvert
- Setback - "Non-disturbance buffer" (approximate)
- FEMA 100 year floodplain boundary
- Boundary of historic tailings placement (approximate)
- Proposed NID potable water pipe extension
- Pine Hill Flannelbush

Historic 1947 airphoto taken after WWII mine closure (source USGS).

Centennial Industrial Site was historic mine tailings site. Cleanup of mine tailings area on Centennial site is subject to a separate DTSC clean-up project. DTSC cleanup project will be completed before engineered fill is placed on the site as part of the Idaho-Maryland Mine Project.

The majority of impacts and mitigation for removal of wetlands and streams which have formed on top of the historic mine tailings site are anticipated to be from the DTSC clean-up project (before the engineered fill is placed from the Idaho-Maryland Mine Project).

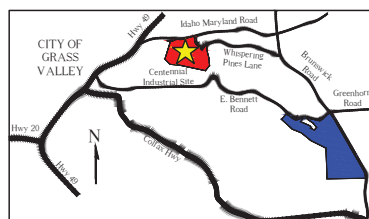
Several Pine Hill flannelbush plants will be impacted by the placement of engineered fill as part of the Idaho-Maryland Mine Project.

Sensitive resources plotted on map based on reports:

Centennial Industrial Site  
Biological Resources Assessment  
Greg Matuzak Environmental Consulting LLC, November 2019

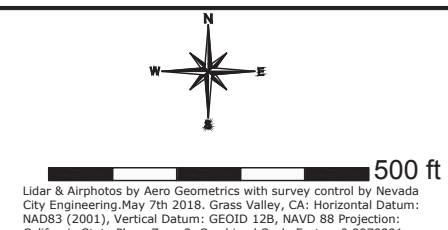
Centennial Industrial Site  
Aquatic Resources Delineation of Water of the United States and State of California  
Greg Matuzak Environmental Consulting LLC, November 2019

**R** Idaho-Maryland Mine Project  
Rise Grass Valley Inc.  
PO Box 271  
Grass Valley, California, USA 95945



Centennial Industrial Site  
Nevada County, SEC. 26, T.16N, R.8E., M.D.M  
Total Area = 56.41 Acres  
Assessor Parcel Numbers:  
09-550-32, 09-550-37, 09-550-38, 09-550-39,  
09-550-40, 09-560-36  
Current Zoning M1 / Proposed Zoning M1

Domestic water source: Nevada Irrigation District  
Industrial water source: N/A  
Sewage disposal: N/A  
Orphir Hill Fire Protection District  
Electrical power: N/A  
Final grading topography based on:  
Preliminary Grading Plan prepared by Nevada City Engineering Inc.



**C102 Centennial Industrial Site Plan**  
**Biologic Summary Map**  
Area of disturbance, surrounding area, current and historic air photos  
**Revision 1**  
Drawnby : Rise Grass Valley - Feb 1 / 20      Scale : 1" = 200 feet