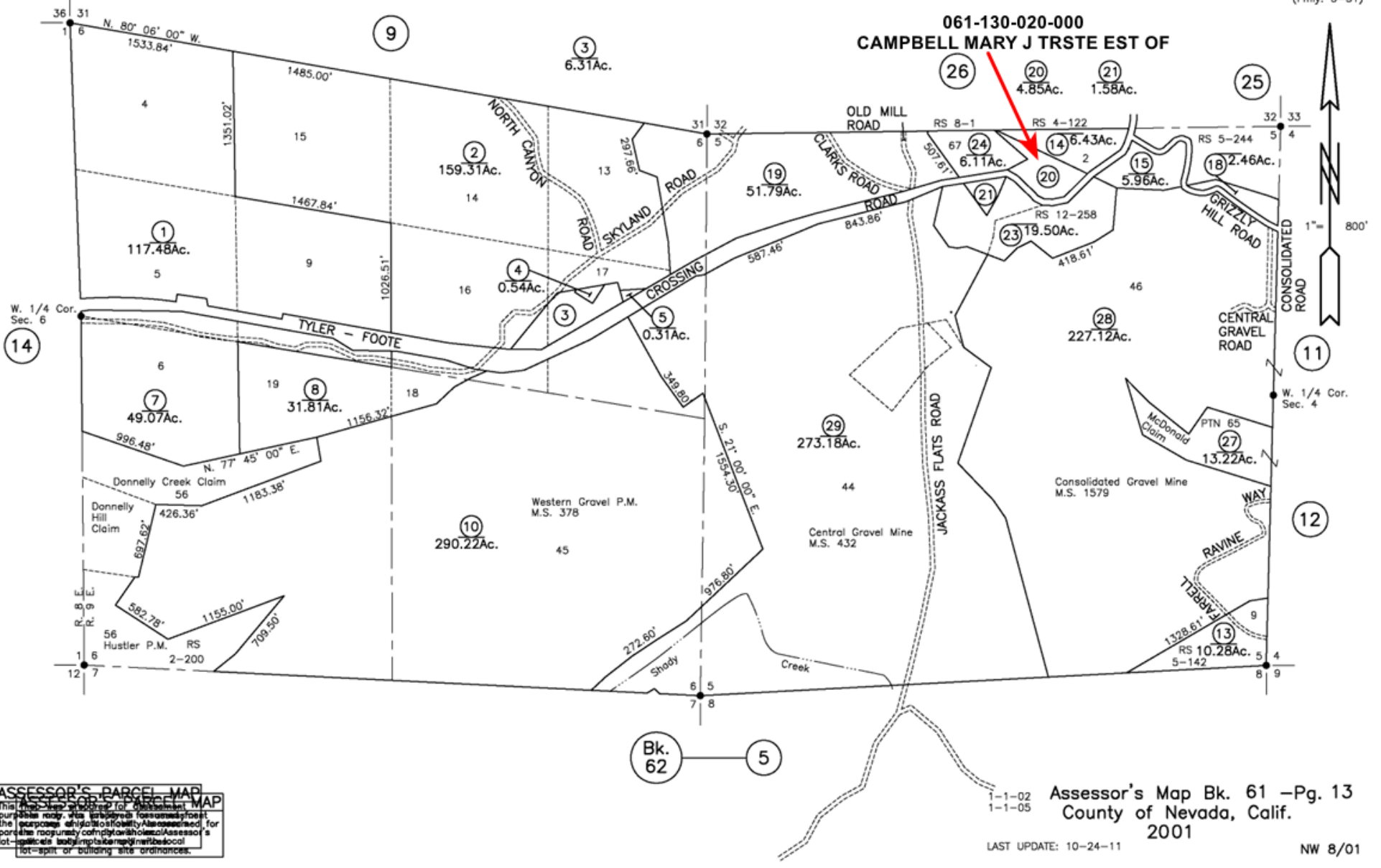


EXHIBIT "A"
AUTHORIZATION AND REPORT OF SALES

Under direction of the Board of Supervisors, by Resolution No.____ dated August 20, 2024, the property listed below is to be offered for sale at public internet auction or by sealed bid sale (if noted) beginning November 7, 2024, and to be disposed of as follows:

PARCEL NUMBER	LAST ASSESSED OWNER	MINIMUM BID	SALE STATUS
061-130-020-000	CAMPBELL MARY J TRSTE EST OF	\$17,595.00	
061-250-004-000	CAMPBELL MARY J TRSTE EST OF	\$13,004.00	
036-350-004-000	CONFER JOAN K	\$21,019.00	
004-580-029-000	CROSS PAUL	\$40,962.00	
029-320-018-000	DENTY SCOTT	\$122,808.00	
054-490-012-000	DIAMOND ROBERT J	\$29,045.00	
064-130-033-000	DLUHOS EMRE ERANEST & ANN MARION ETAL	\$6,010.00	
061-140-061-000	DURKIN TODD	\$13,769.00	
061-140-083-000	DURKIN TODD	\$12,580.00	
052-310-015-000	EMRICH DEBORA S	\$33,993.00	
012-610-030-000	HOLLINGSWORTH RICHARD & ORLEAN TRSTE	\$11,571.00	
008-090-025-000	HOMMEL SHANNA	\$14,271.00	
037-350-007-000	HOSKINS SAMANTHA & TERRY	\$59,069.00	
050-490-005-000	KALENYUK MARINA	\$12,188.00	
006-380-051-000	LOMA RICA INDUSTRIAL PARK	\$3,094.00	
052-260-018-000	MACDUFF NANCY J	\$5,318.00	
047-140-003-000	MILAS TIMOTHY & KIM	\$9,190.00	
039-170-072-000	MILLER KAREN	\$6,473.00	
018-270-023-000	MOLTO BENE LLC	\$5,150.00	
061-100-014-000	MORRIS JAME E JR	\$25,185.00	
024-190-006-000	OWEN LANGDON W	\$21,257.00	
030-080-009-000	PANKEY-BRINKMAN HERTA K THE ESTATE OF	\$4,684.00	
064-270-032-000	PETERSON JAMES	\$49,288.00	
003-610-021-000	PHILLIPS AARON W	\$35,382.00	
063-170-012-000	RAMESON TRENT A	\$14,244.00	
046-440-001-000	REECE JOHN S	\$87,500.00	
065-030-002-000	ROSALES RICARD SR ETAL	\$56,356.00	
061-020-036-000	SALVATORE AJA A	\$48,000.00	
013-250-012-530	SANTANA JOSE Z TRSTE	\$2,690.00	
013-250-013-510	SANTANA JOSE Z TRSTE	\$2,723.00	
007-140-025-000	TAMBASCO ANTHONY II ADMIN	\$11,785.00	
054-270-005-000	TSI-AKIM MAIDU	\$3,135.00	
005-396-030-000	TSI-AKIM MAIDU CORPORATION THE	\$3,790.00	
025-500-018-000	WOODARD CASEY	\$9,263.00	

061-130-020-000
CAMPBELL MARY J TRSTE EST OF



ASSESSOR'S PARCEL MAP
 This map is prepared for the purpose of showing the location and boundaries of all parcels of land within the jurisdiction of the Assessor for the purpose of assessing property taxes. It is not intended to be used for any other purpose, including but not limited to, the determination of ownership, title, or building site ordinances.

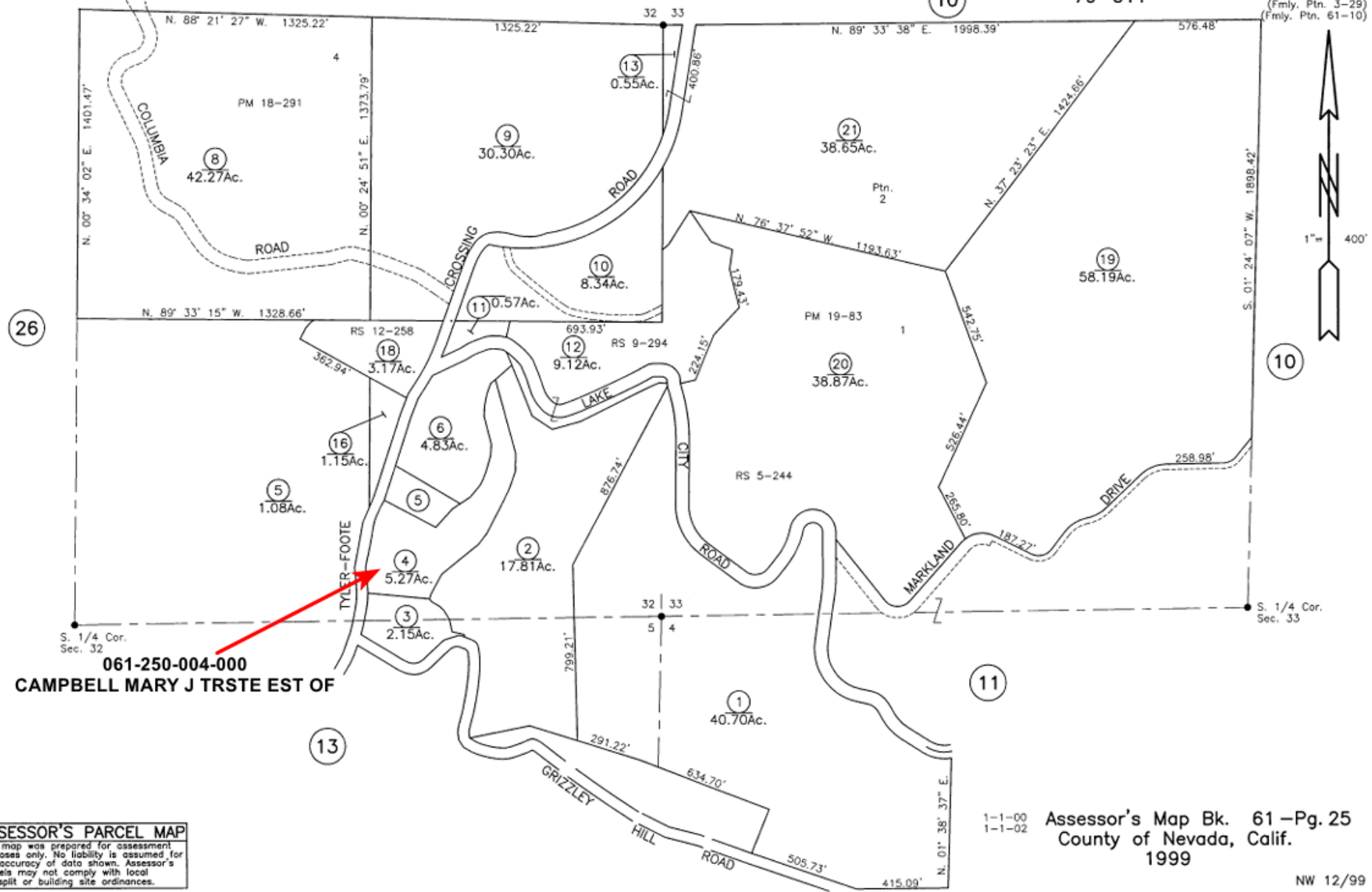
1-1-02
 1-1-05
 Assessor's Map Bk. 61 -Pg. 13
 County of Nevada, Calif.
 2001

LAST UPDATE: 10-24-11 NW 8/01

PTN. SEC'S 4-5, T. 17 N., R. 9 E., 32 & 33, T. 18 N., R. 9 E., M.D.B. & M.

Tax Area Code
79-011

61-25
(Fmly. Ptn. 3-29)
(Fmly. Ptn. 61-10)



061-250-004-000
CAMPBELL MARY J TRSTE EST OF

ASSESSOR'S PARCEL MAP
This map was prepared for assessment purposes only. No liability is assumed for the accuracy of data shown. Assessor's parcels may not comply with local lot-split or building site ordinances.

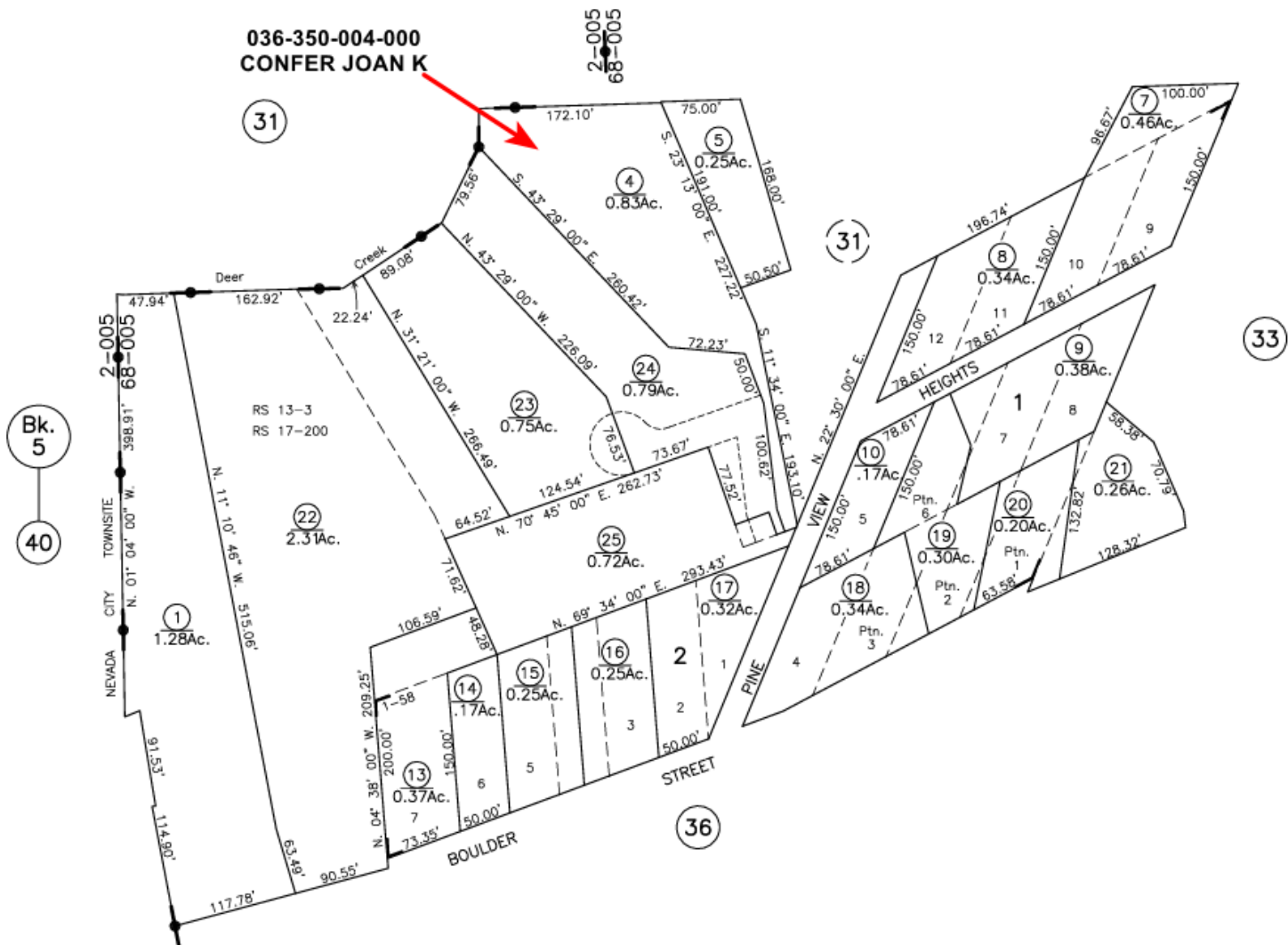
1-1-00
1-1-02
Assessor's Map Bk. 61-Pg. 25
County of Nevada, Calif.
1999

NW 12/99

PTN. S.E. 1/4 SEC. 7, T. 16 N., R. 9 E., M.D.B. & M.

Tax Area Code
68-005

36-35
(Fmly. Ptn. 6-10)



ASSESSOR'S PARCEL MAP NOTICE
 This map was prepared for assessment purposes only. No liability is assumed for the accuracy of data shown. Assessor's parcels may not comply with local lot-split or building site ordinances. Assessor's block numbers shown in ellipses; parcel numbers are shown in circles. All distances on curved lines are chord measurements.

1-1-05
 1-1-08
 1-1-23

Assessor's Map Bk. 36-Pg. 35
 County of Nevada, Calif.
 2004

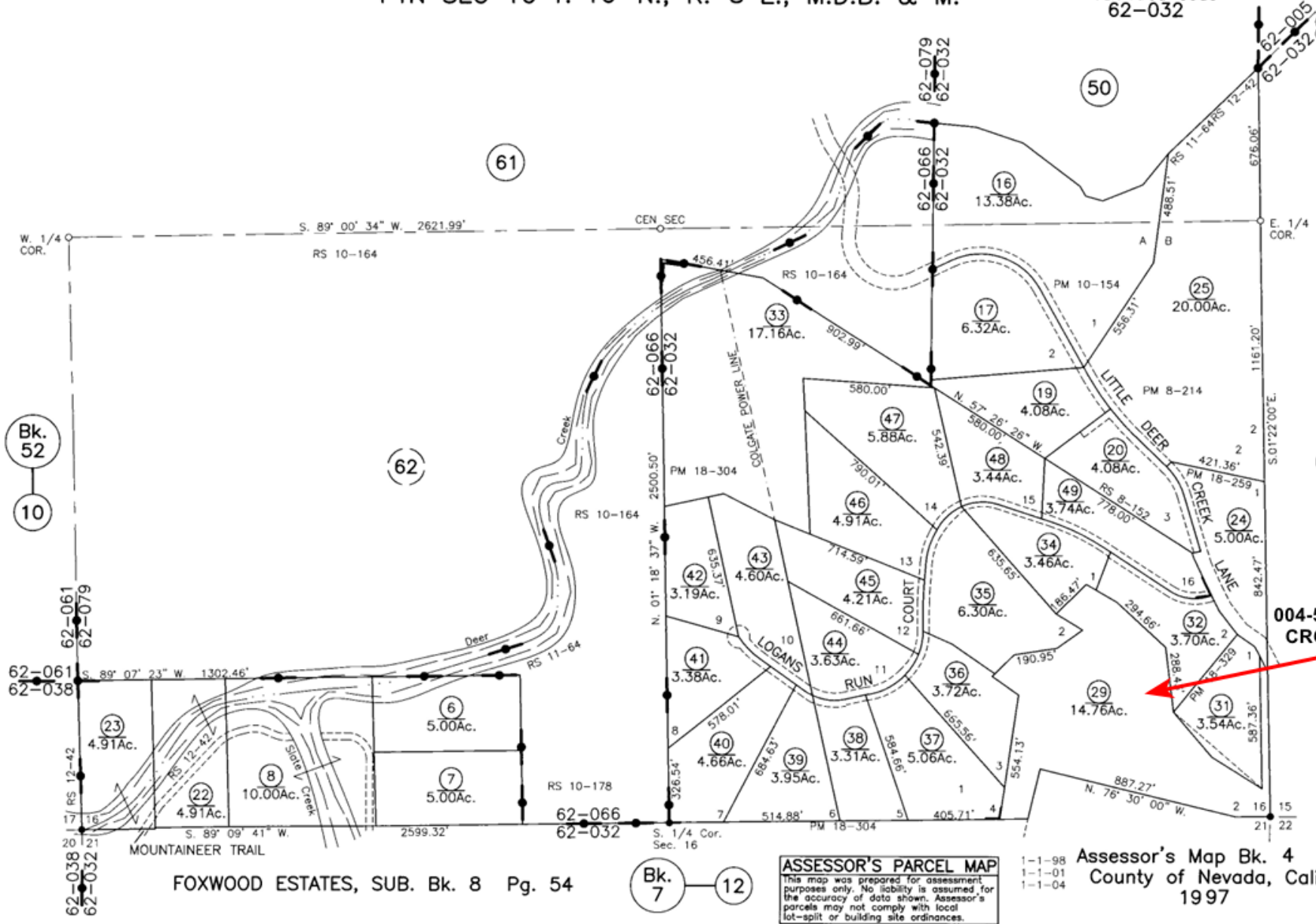
PINE VIEW HEIGHTS SUB. Bk. 1, Pg. 58

LAST UPDATE: 10-19-22 EL NW 12/04

PTN SEC 16 T. 16 N., R. 8 E., M.D.B. & M.

Tax Area Code
62-032

4-58
(Fmly. Ptn. 4-08)
(Fmly. Ptn. 4-50)



004-580-029-000
CROSS PAUL

FOXWOOD ESTATES, SUB. Bk. 8 Pg. 54

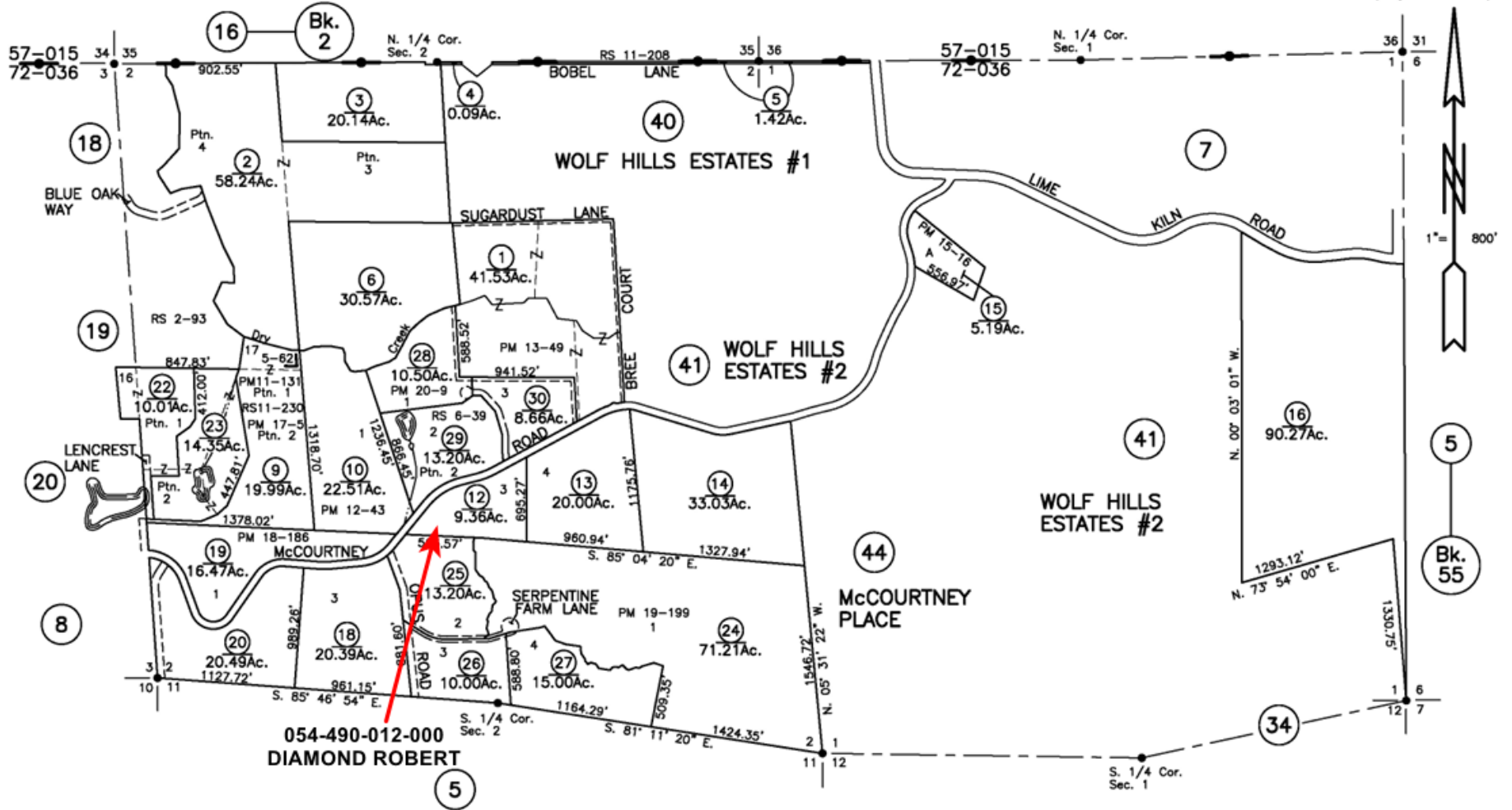
ASSESSOR'S PARCEL MAP
This map was prepared for assessment purposes only. No liability is assumed for the accuracy of data shown. Assessor's parcels may not comply with local lot-split or building site ordinances.

Assessor's Map Bk. 4 -Pg.58
County of Nevada, Calif.
1997

PTN. SEC'S 1, 2, & 3, T.14 N., R. 7 E., M.D.B. & M.

Tax Area Code
72-036

54-49
(Fmly. Ptn. 2-18)
(Fmly. Ptn. 54-05)



054-490-012-000
DIAMOND ROBERT

ASSESSOR'S PARCEL MAP
 This map was prepared for assessment purposes only. No liability is assumed for the accuracy of data shown. Assessor's parcels may not comply with local lot-split or building site ordinances.

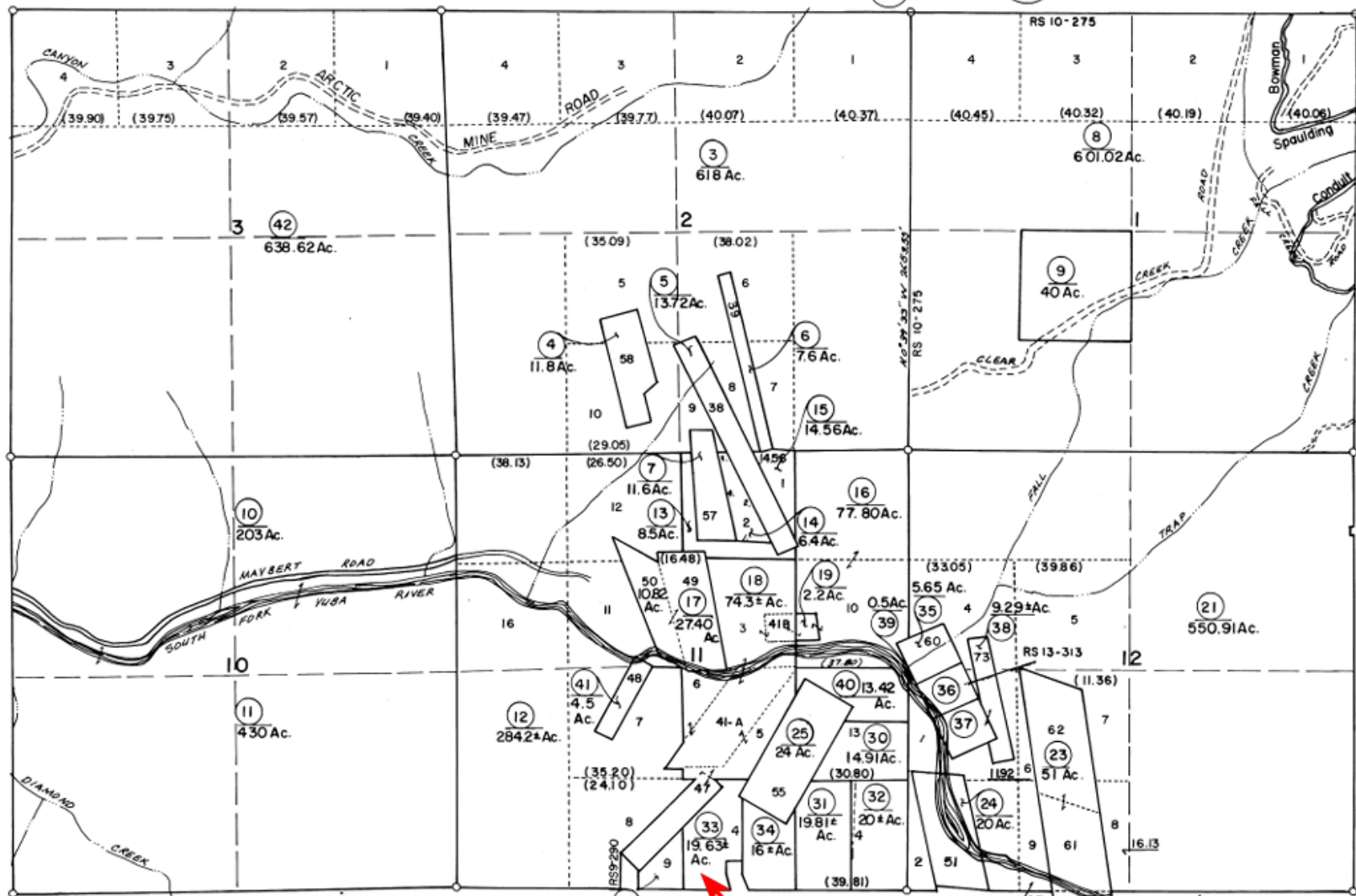
IRON MOUNTAIN ESTATES SUB. Bk. 5, Pg. 62

1-1-01 Assessor's Map Bk. 54 -Pg. 49
 1-1-02 County of Nevada, Calif.
 1-1-06 2000
 1-1-07
 1-1-08 LAST UPDATE: 4-25-13
 1-1-09 NW 12/00

SEC'S. 1, 2, 3, 10, 11, & 12, T. 17 N., R. 11 E., M.D.B. & M.

Tax Area Code
79-000

64-13
(FMLY. 14-32)



ASSESSOR'S PARCEL MAP
 This map was prepared for assessment purposes only. No liability is assumed for the accuracy of data shown. Assessor's parcels may not comply with local height or building codes.

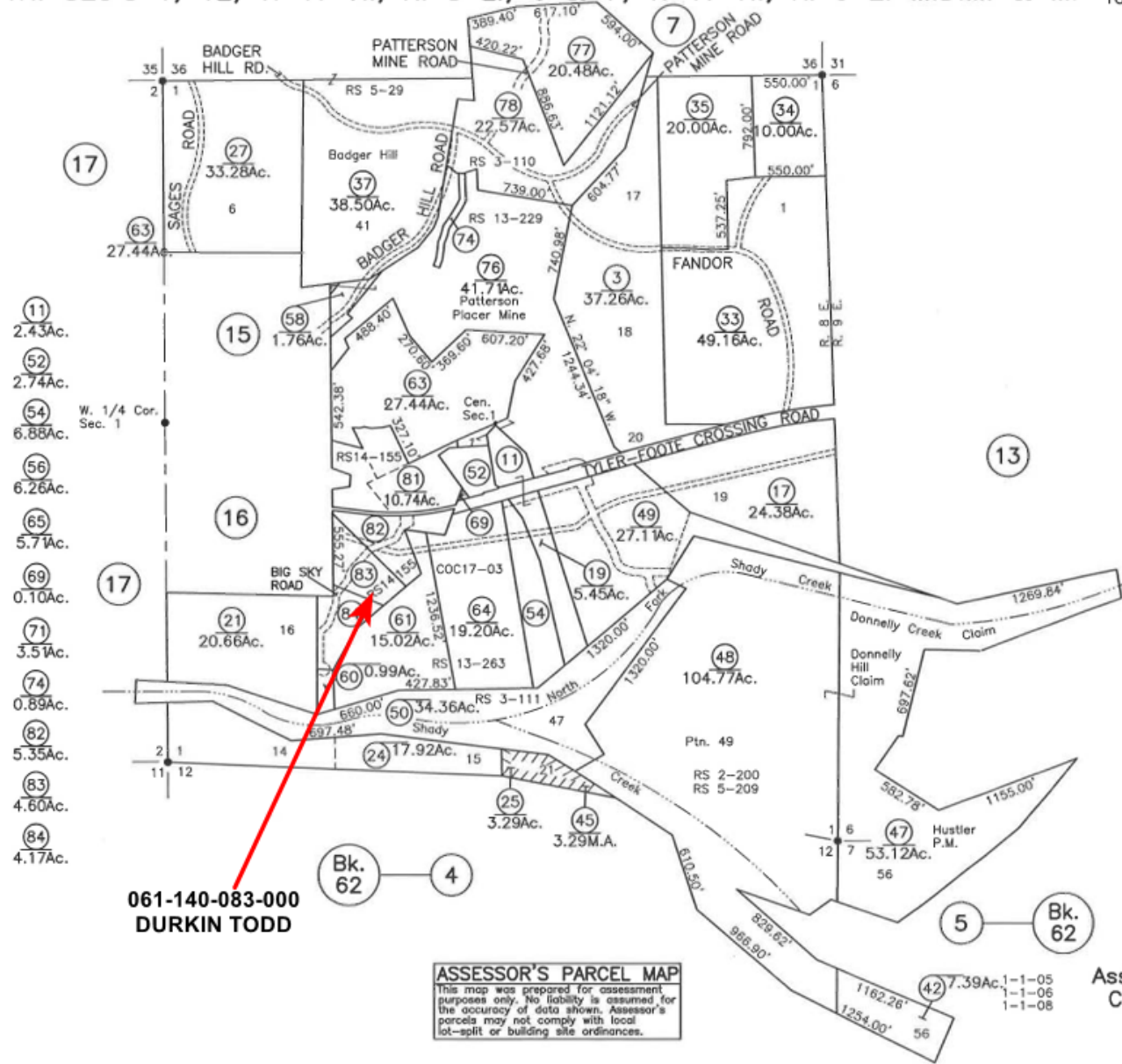
- 1. EAST 400'
- 2. N. 24° 00' W. 12.00'
- 3. WEST 100'
- 4. S. E. 1/4 1150'

064-130-033-000
DLUHOS EMRE & ANN

Assessor's Map Bk. 64 Pg. 13 68-007

County of Nevada, Calif.

1962 3-1-87 3-1-93
3-1-88 1-1-87
3-1-89 1-1-88



061-140-083-000
DURKIN TODD

ASSESSOR'S PARCEL MAP
This map was prepared for assessment purposes only. No liability is assumed for the accuracy of data shown. Assessor's parcels may not comply with local lot-split or building site ordinances.

Assessor's Map Bk. 61 -Pg. 14
County of Nevada, Calif.
2004

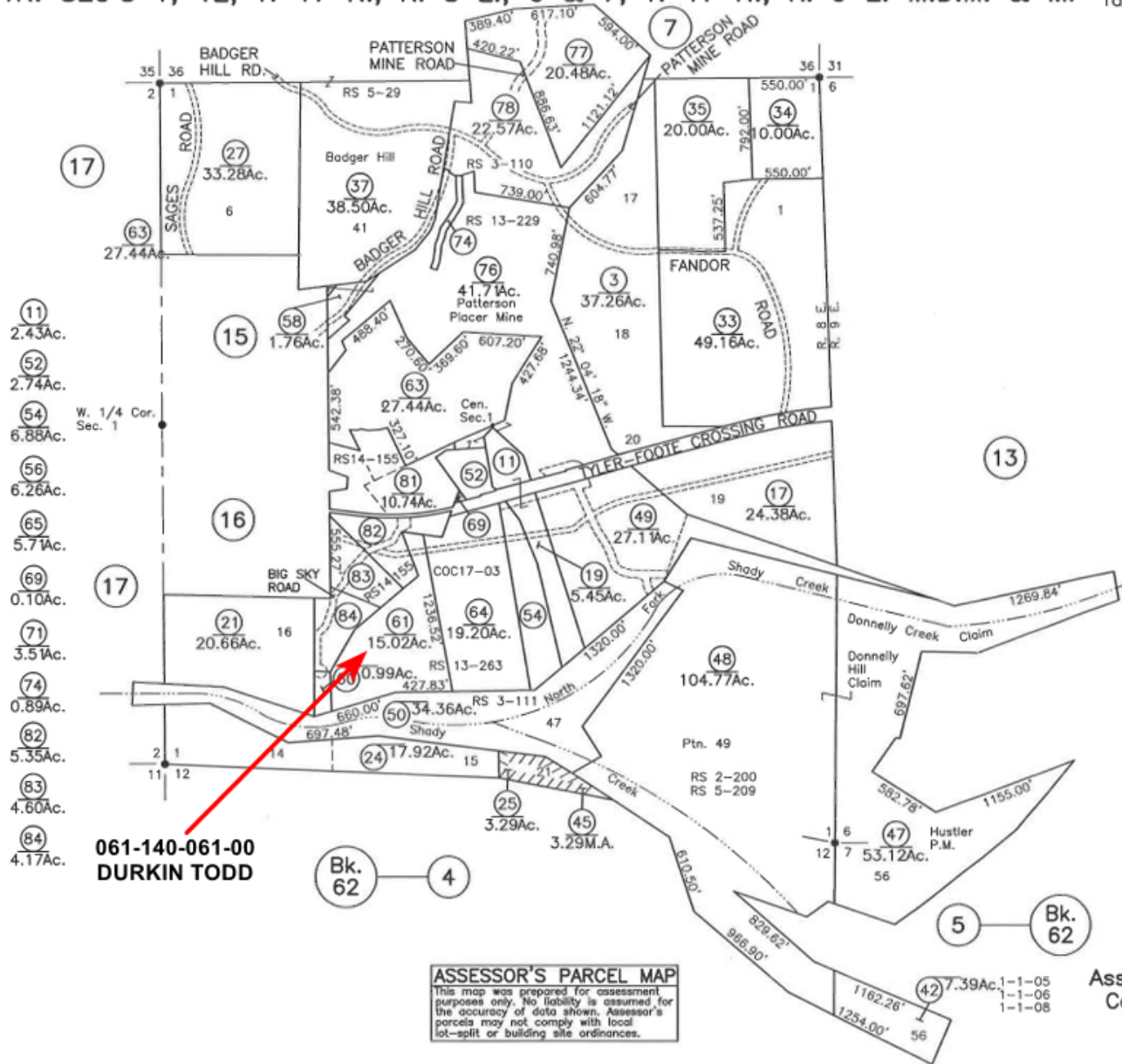
LAST UPDATE: 7-11-17

TM 07/17

PTN. SEC'S 1, 12, T. 17 N., R. 8 E., 6 & 7, T. 17 N., R. 9 E. M.D.M. & M.

Tax Area Code
79-011

61-14
(Fmly. Ptn. 3-14)



- (11) 2.43Ac.
- (52) 2.74Ac.
- (54) W. 1/4 Cor. Sec. 1 6.88Ac.
- (56) 6.26Ac.
- (65) 5.71Ac.
- (69) 0.10Ac.
- (71) 3.51Ac.
- (74) 0.89Ac.
- (82) 5.35Ac.
- (83) 4.60Ac.
- (84) 4.17Ac.

061-140-061-00
DURKIN TODD

Bk. 62 — 4

5 — Bk. 62

ASSESSOR'S PARCEL MAP
 This map was prepared for assessment purposes only. No liability is assumed for the accuracy of data shown. Assessor's parcels may not comply with local lot-split or building site ordinances.

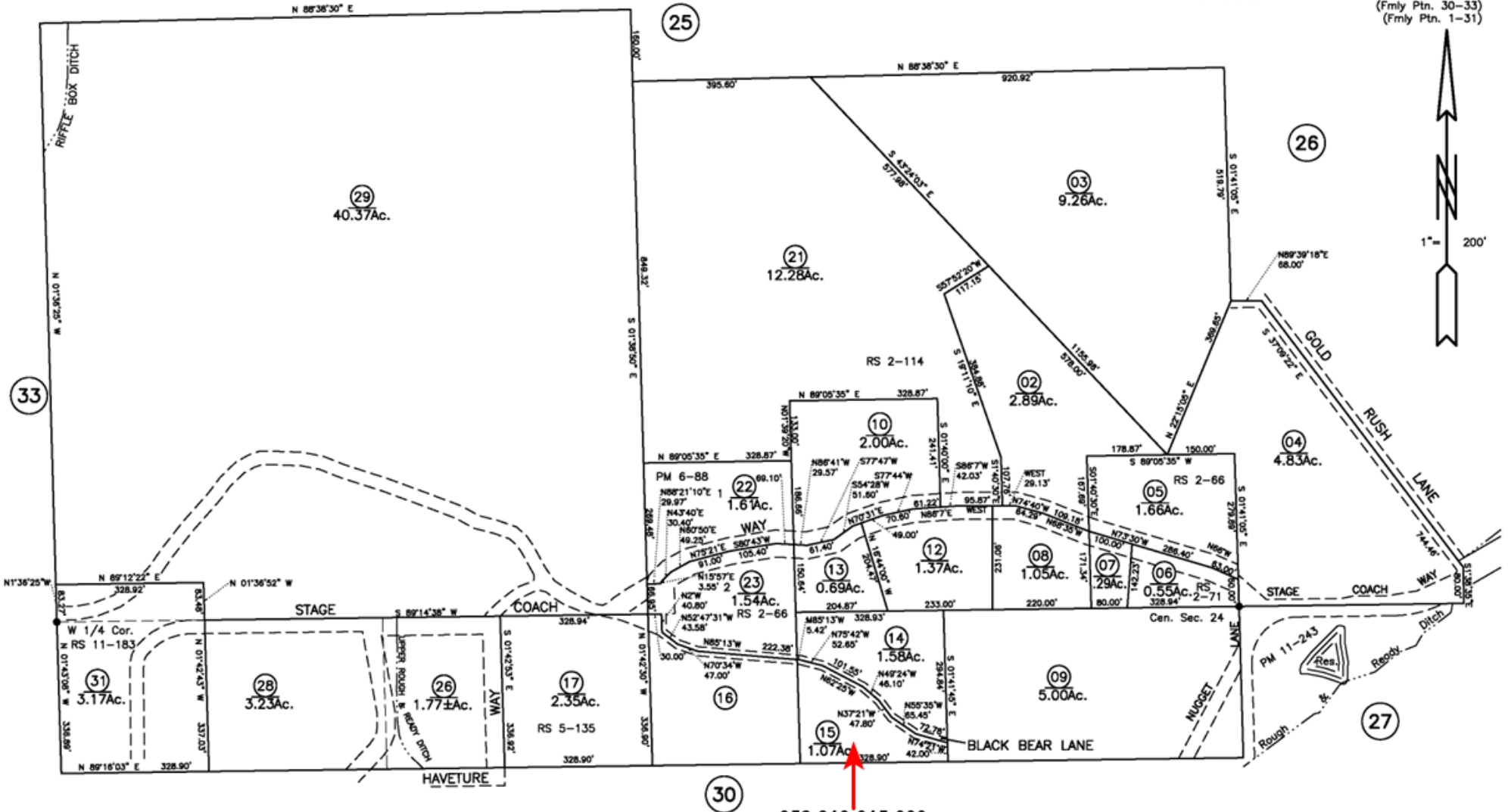
Assessor's Map Bk. 61 -Pg. 14
 County of Nevada, Calif.
 2004

LAST UPDATE: 7-11-17 TM 07/17

PTN SEC 24, T. 16 N., R. 7 E., M.D.B. & M.

Tax Area Code
74-002

52-31
(Fmly Ptn. 30-33)
(Fmly Ptn. 1-31)



ASSESSOR'S PARCEL MAP
This map was prepared for assessment purposes only. No liability is assumed for the accuracy of data shown. Assessor's parcels may not comply with local lot-split or building site ordinances.

052-310-015-000
EMRICH DEBORA

Assessor's Map Bk. 52 -Pg.31
County of Nevada, Calif.

- 3-1-83
- 3-1-84
- 3-1-86
- 3-1-87
- 3-1-88
- 3-1-89
- 3-1-92
- 3-1-95
- 1-1-98

LAST UPDATE: 1-1-98

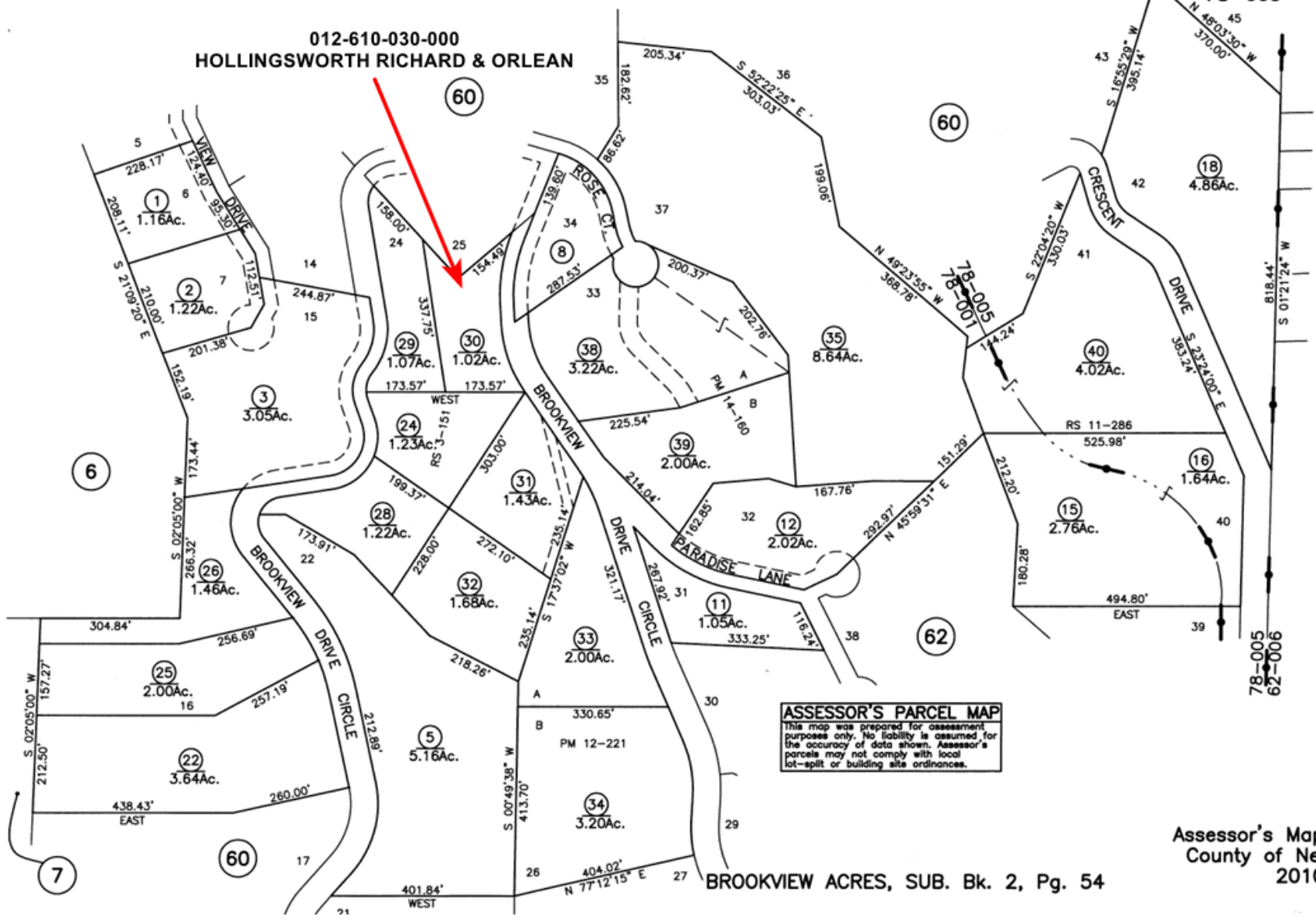
AAG 6/13

PTN. N.W. 1/4 SEC. 6, T. 15 N., R. 9 E., M.D.B. & M.

Tax Area Code
78-001
78-005

12-61
(Fmly. Ptn. 12-06)

012-610-030-000
HOLLINGSWORTH RICHARD & ORLEAN



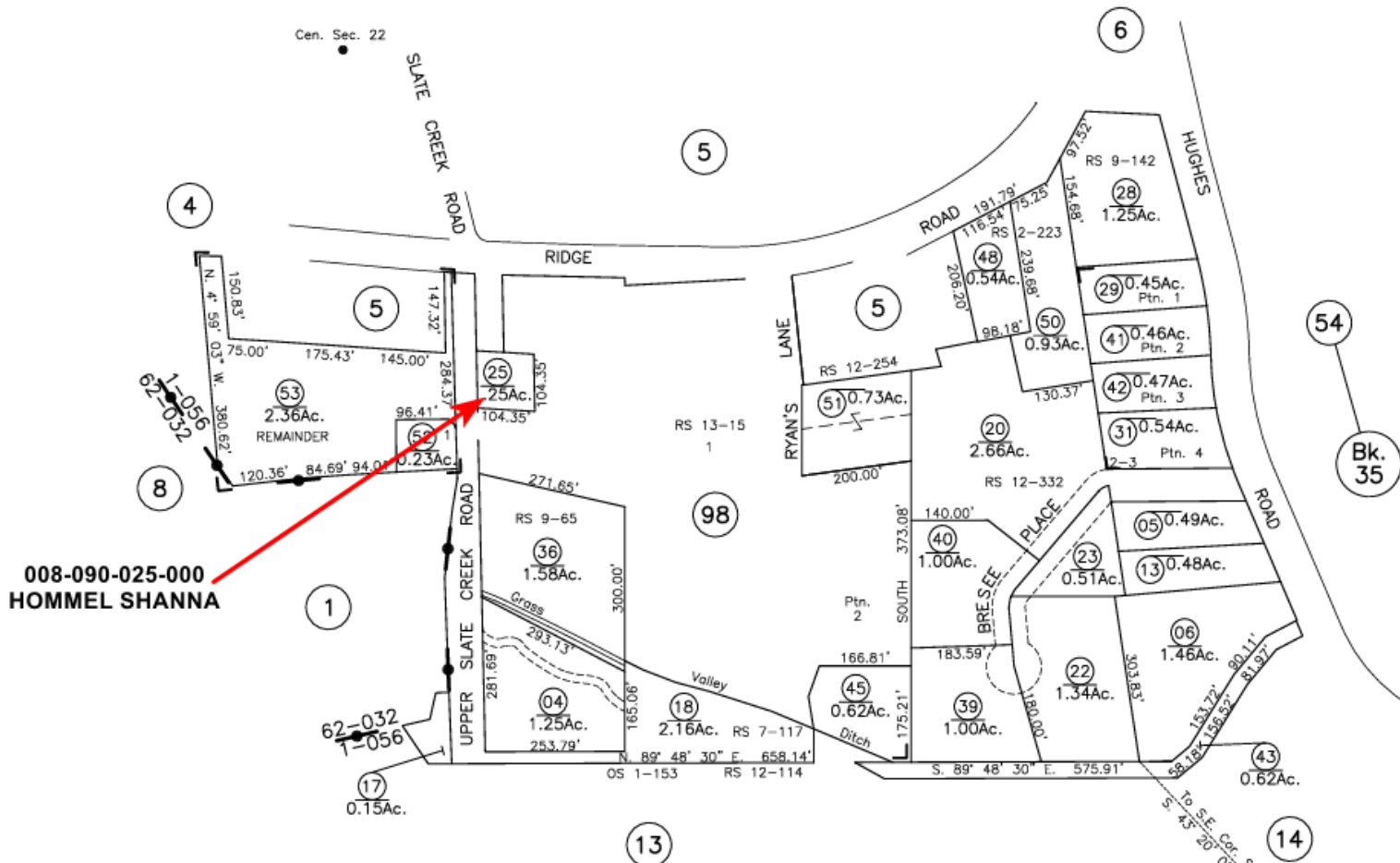
ASSESSOR'S PARCEL MAP
This map was prepared for assessment purposes only. No liability is assumed for the accuracy of data shown. Assessor's parcels may not comply with local lot-split or building site ordinances.



Assessor's Map Bk. 12 -Pg.61
County of Nevada, Calif.
2010

BROOKVIEW ACRES, SUB. Bk. 2, Pg. 54

RLW 06/10



008-090-025-000
HOMMEL SHANNA

GRASS VALLEY ANNEX 9 O.S. Bk. 1, Pg. 153
 GRASS VALLEY ANNEX, 98-05 R.S. Bk. 12, Pg. 114
 SUN VIEW SUB. Bk. 2, Pg. 3
 RUSTIC WOODS PHASE 1 SUB. Bk. 9, Pg. 27

ASSESSOR'S PARCEL MAP NOTICE
 This map was prepared for assessment purposes only. No liability is assumed for the accuracy of data shown. Assessor's parcels may not comply with local lot-split or building site ordinances. Assessor's block numbers shown in ellipses; parcel numbers are shown in circles. All distances on curved lines are chord measurements.

1-1-02
 1-1-03
 1-1-05
 1-1-06
 1-1-07
 1-1-10
 1-1-22
 1-1-23

Assessor's Map Bk. 8 -Pg. 09
 County of Nevada, Calif.
 2001

PTN. S. 1/2 SEC. 20, T. 16 N., R. 9 E., M.D.B. & M.

Tax Area Code
62-032

37-35
(Fmly. 6-71)
(Fmly. Ptn. 6-32)



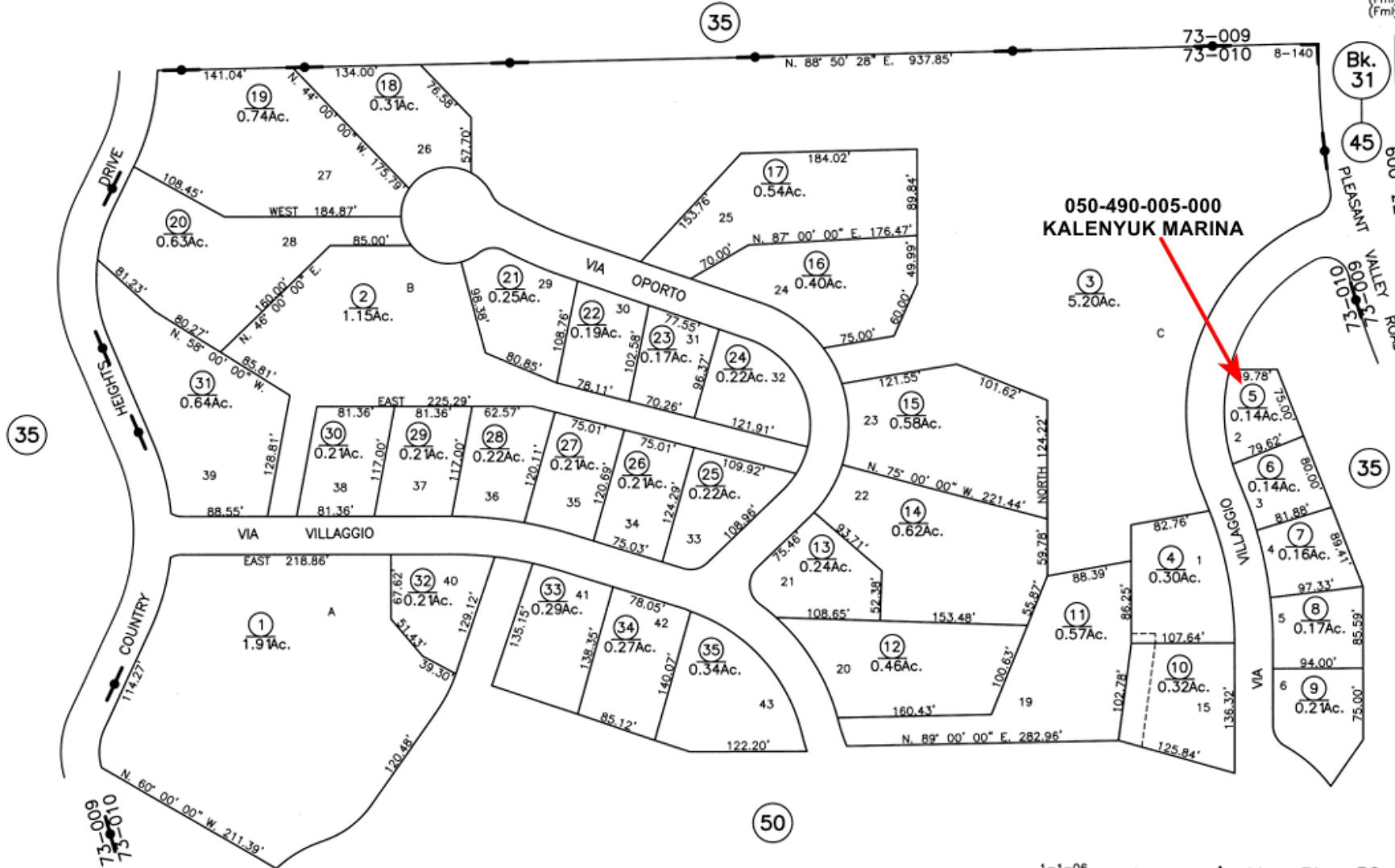
037-350-007-000
HOSKINS SAMANTHA & TERRY

ASSESSOR'S PARCEL MAP
This map was prepared for assessment purposes only. No liability is assumed for the accuracy of data shown. Assessor's parcels may not comply with local lot-split or building site ordinances.

SHANGRI-LA SUB. Bk. 2, Pg. 26

Assessor's Map Bk. 37 -Pg. 35
County of Nevada, Calif.
1996

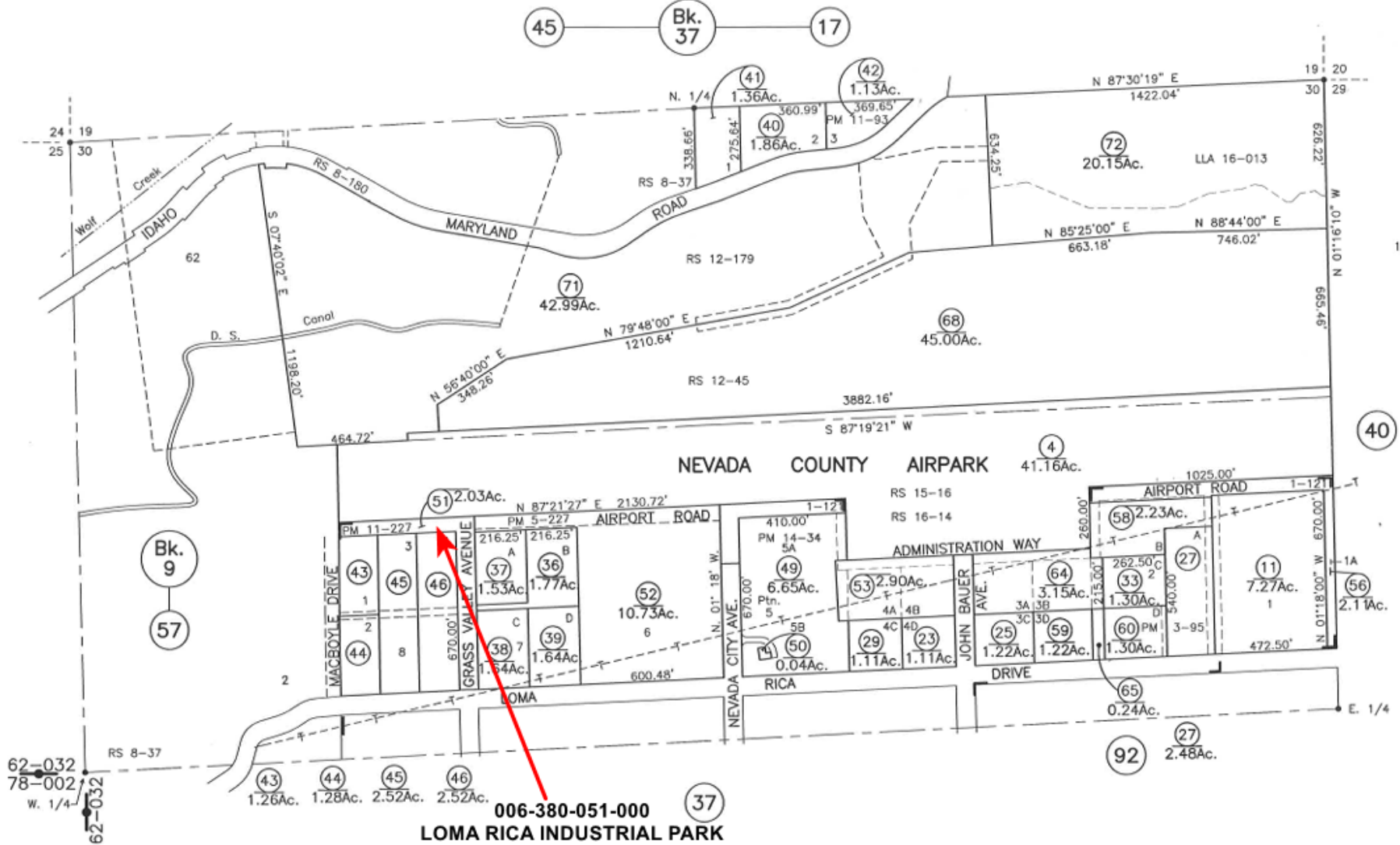
LAST UPDATE: 11-16-14 TM 11/14



ASSESSOR'S PARCEL MAP
 This map was prepared for assessment purposes only. No liability is assumed for the accuracy of data shown. Assessor's parcels may not comply with local lot-split or building site ordinances.

1-1-06
1-1-08

Assessor's Map Bk. 50-Pg. 49
 County of Nevada, Calif.
 2005



LOMA RICA INDUSTRIAL PARK SUB. Bk. 1, Pg. 121

ASSESSOR'S PARCEL MAP
 This map was prepared for assessment purposes only. No liability is assumed for the accuracy of data shown. Assessor's parcels may not comply with local lot-split or building site ordinances.

Assessor's Map Bk. 6 -Pg. 38
 County of Nevada, Calif.
 1998

LAST UPDATE: 7-11-18

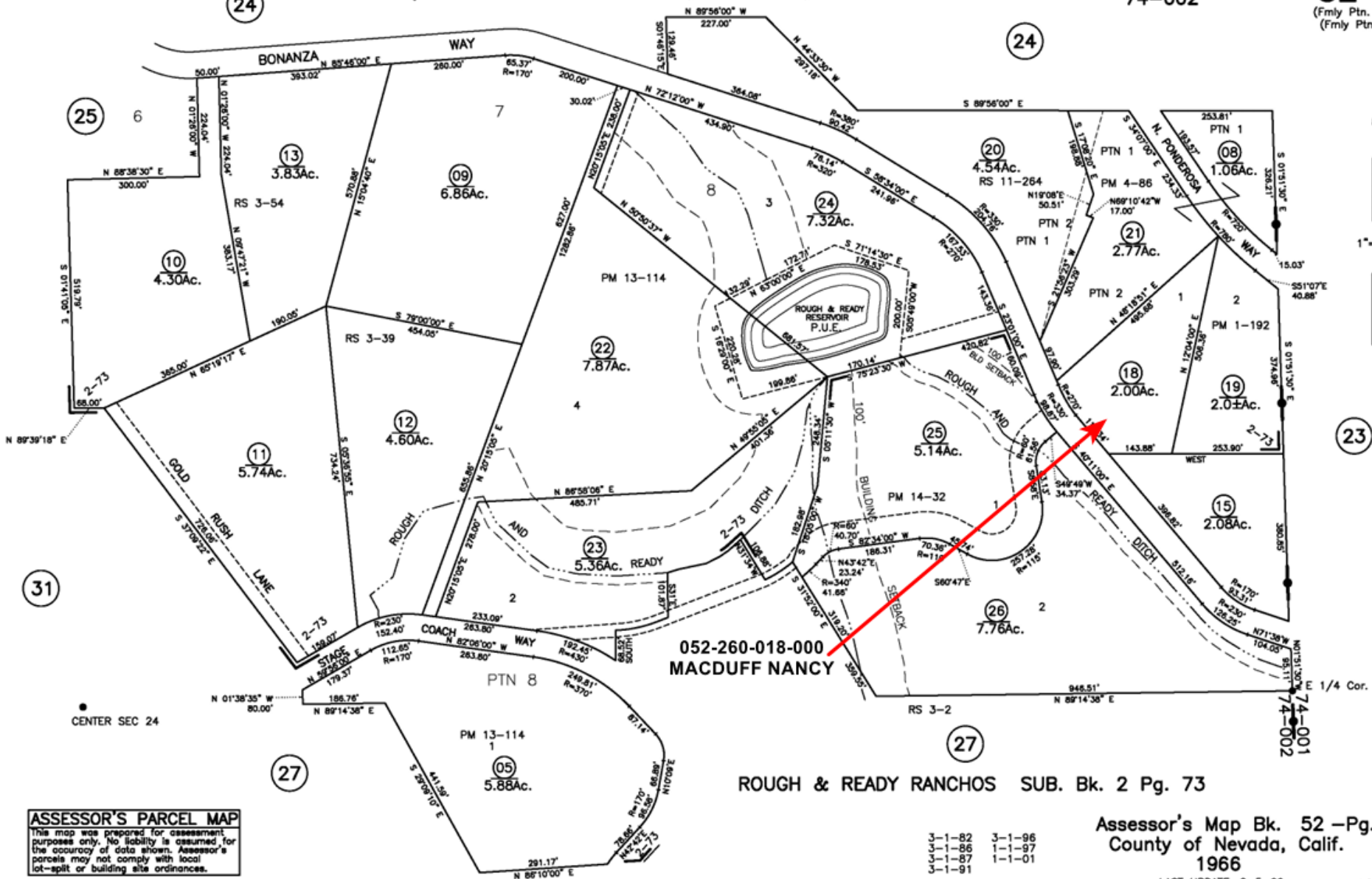
TM 9/17

PTN E1/2 SEC 24, T. 16 N., R. 7 E., M.D.B. & M.

Tax Area Code
74-002

52-26

(Fmly Ptn. 30-32)
(Fmly Ptn. 1-63)



052-260-018-000
MACDUFF NANCY

ROUGH & READY RANCHOS SUB. Bk. 2 Pg. 73

Assessor's Map Bk. 52 -Pg.26
County of Nevada, Calif.
1966

3-1-82	3-1-96
3-1-86	1-1-97
3-1-87	1-1-01
3-1-91	

LAST UPDATE: 2-5-09

AAG 6/13

ASSESSOR'S PARCEL MAP
 This map was prepared for assessment purposes only. No liability is assumed for the accuracy of data shown. Assessor's parcels may not comply with local lot-split or building site ordinances.



23

24

24

25

31

27

27

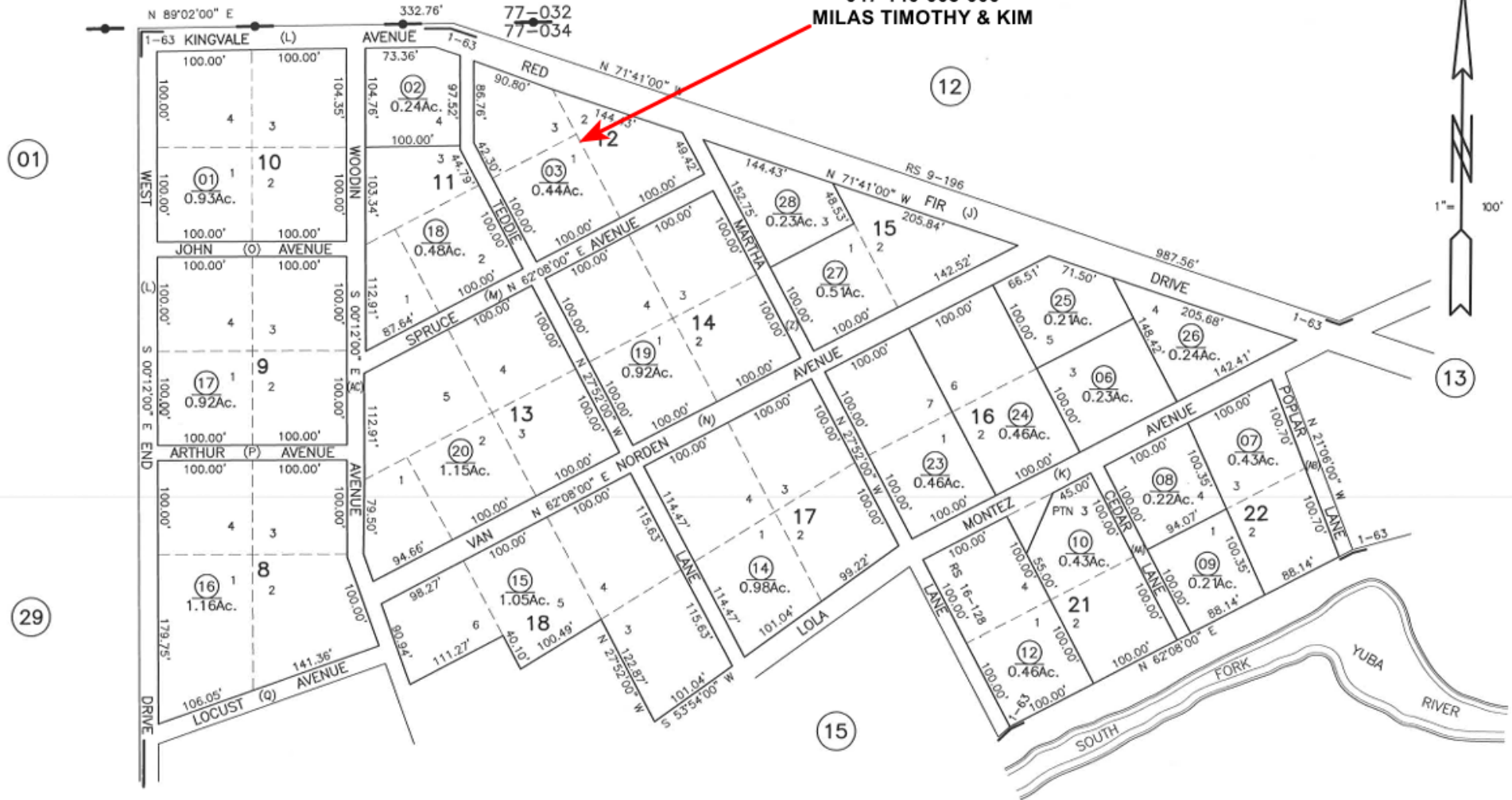
CENTER SEC 24

PTN N1/2 NE1/4 SW1/4 SEC 20, T. 17 N. R.14 E. M.D.B. & M

Tax Area Code
77-034

47-14
(Fmly 15-29)

047-140-003-000
MILAS TIMOTHY & KIM



ASSESSOR'S PARCEL MAP
 This map was prepared for assessment purposes only. No liability is assumed for the accuracy of data shown. Assessor's parcels may not comply with local lot-split or building site ordinances.

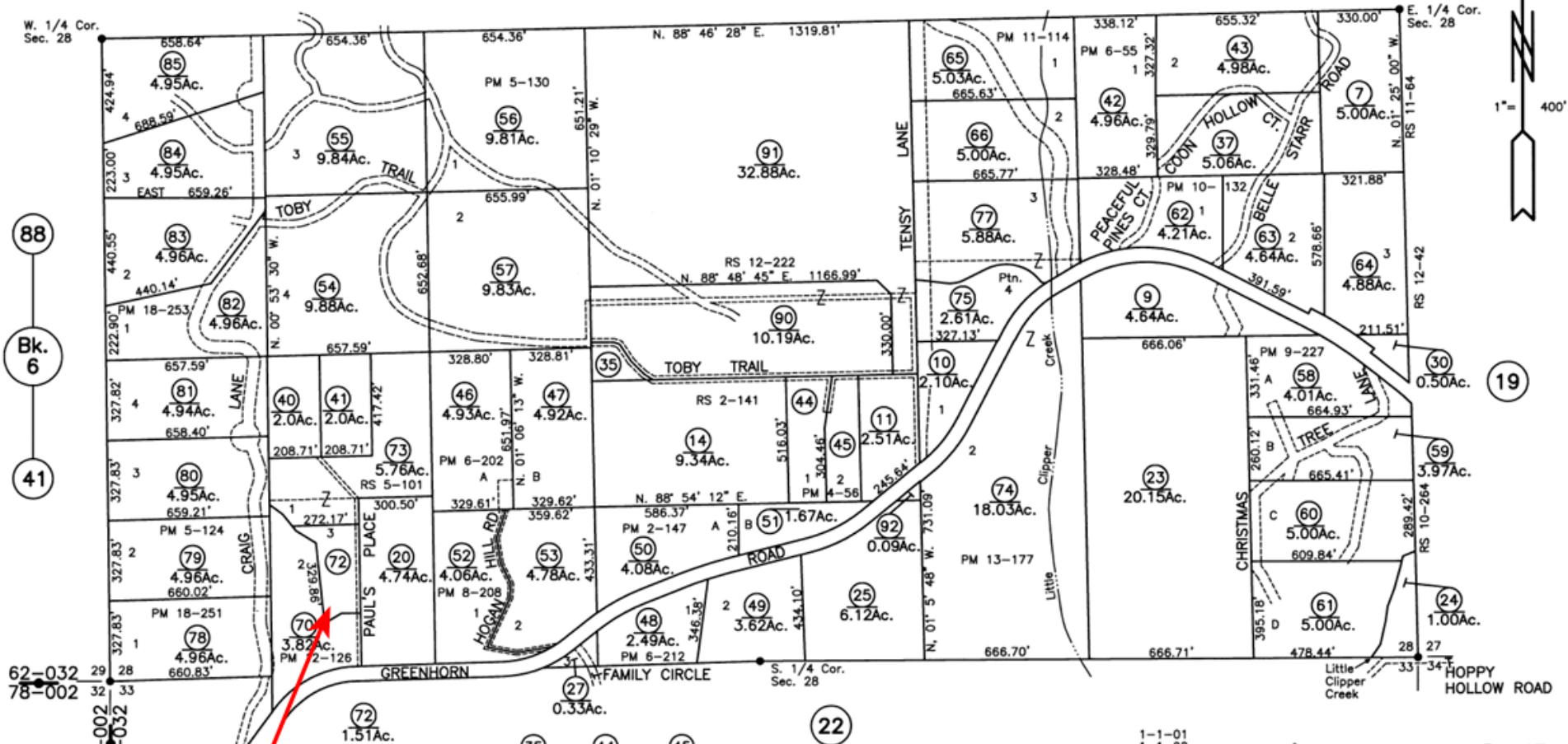
KINGVALE SUBDIVISION UNIT NO. 2, SUB Bk. 1 Pg. 63

Assessor's Map Bk. 47-Pg. 14
County of Nevada, Calif.
1962

LAST UPDATE: 05-07-18

AAG 7/12

16



88
Bk. 6
41

62-032
78-002
78-002
62-032

039-170-072-000
MILLER KAREN

ASSESSOR'S PARCEL MAP
This map was prepared for assessment purposes only. No liability is assumed for the accuracy of data shown. Assessor's parcels may not comply with local lot-split or building site ordinances.

1-1-01
1-1-02
1-1-03
1-1-04
1-1-06
1-1-07

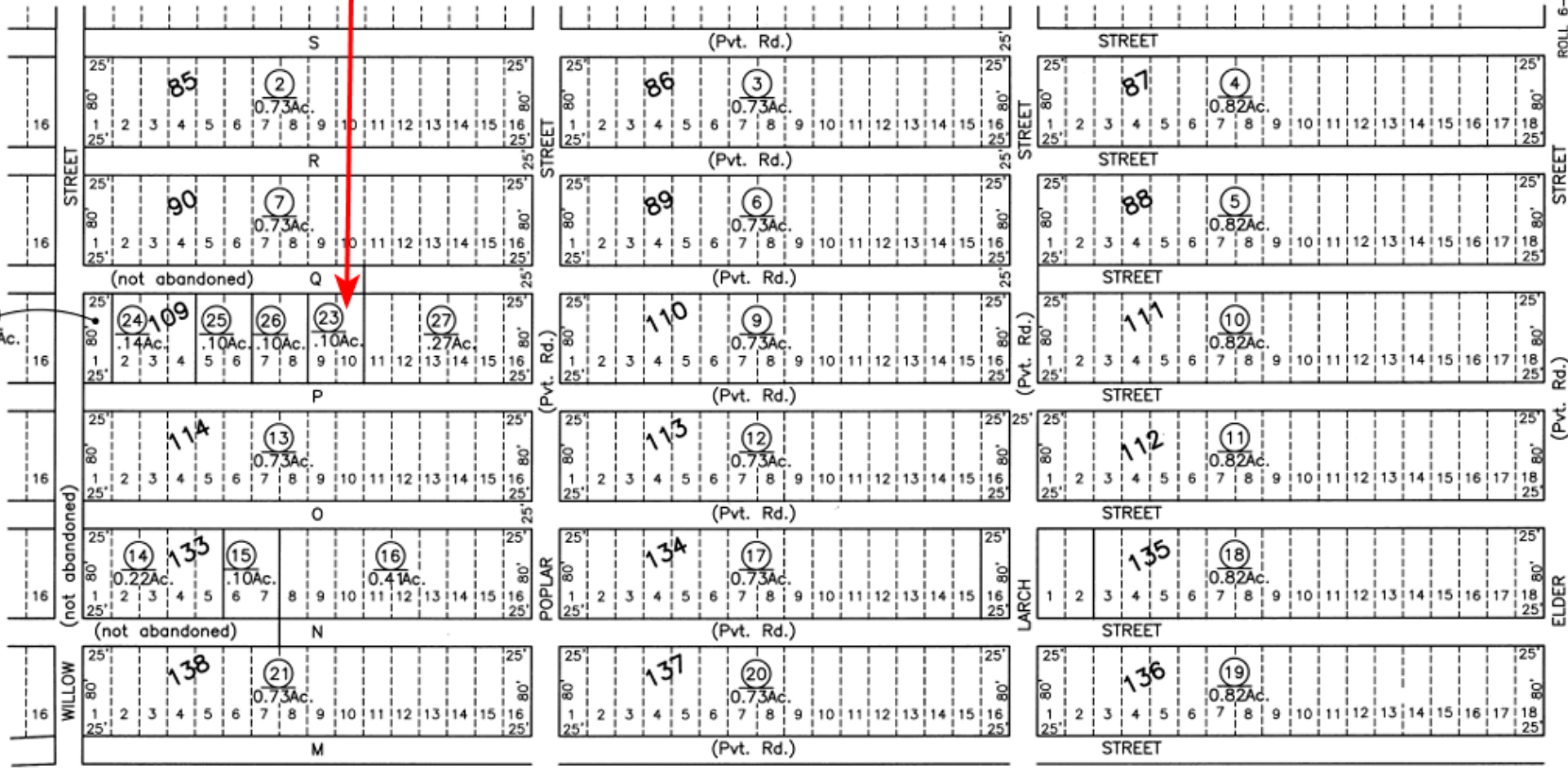
Assessor's Map Bk. 39 -Pg. 17
County of Nevada, Calif.
2000

NW 12/00



018-270-023-000
MOLTO BENE LLC

23



26

1

29

NOTE: ROADS ABANDONED Doc. # 85-24554
UNLESS OTHERWISE NOTED.

DONNER CAMP BUCKNAM TRACT, Roll 6, Pg. 19
TRUCKEE INC. R.S. Bk. 11, Pg. 67

ASSESSOR'S PARCEL MAP
This map was prepared for assessment purposes only. No liability is assumed for the accuracy of data shown. Assessor's parcels may not comply with local lot-split or building site ordinances.

1-1-08

Assessor's Map Bk. 18-Pg.27
County of Nevada, Calif.
2007

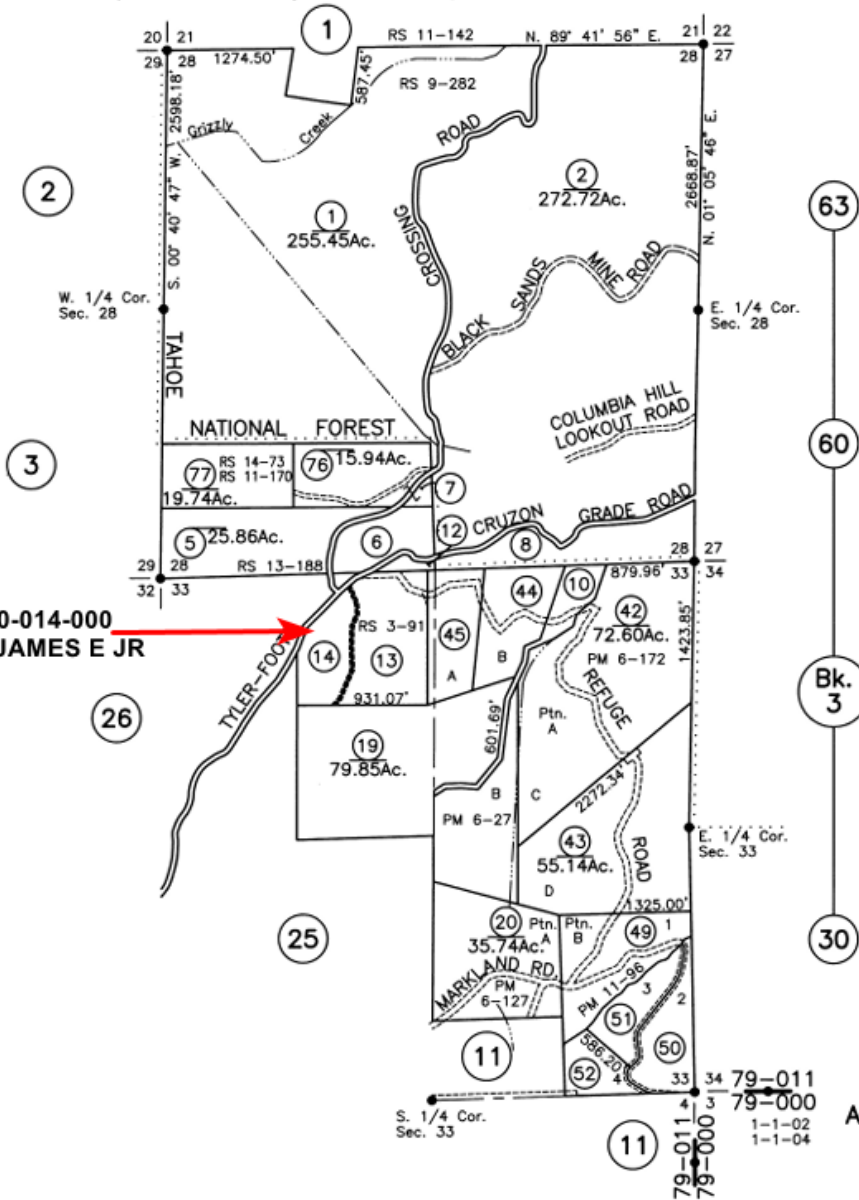
PTN. SEC'S 28 & 33, T. 18 N., R. 9 E., M.D.B. & M.

Tax Area Code
79-011

61-10
(Fmly. Ptn. 3-29)

- ⑥ 13.47Ac.
- ⑦ 4.42Ac.
- ⑧ 20.06Ac.
- ⑩ 8.44Ac.
- ⑫ 1.38Ac.
- ⑬ 23.49Ac.
- ⑭ 11.39Ac.
- ④④ 16.87Ac.
- ④⑤ 15.08Ac.
- ④⑨ 23.38Ac.
- ④⑩ 13.55Ac.
- ④⑪ 10.07Ac.
- ④⑫ 8.00Ac.

061-100-014-000
MORRIS JAMES E JR



ASSESSOR'S PARCEL MAP
This map was prepared for assessment purposes only. No liability is assumed for the accuracy of data shown. Assessor's parcels may not comply with local lot-split or building site ordinances.

Assessor's Map Bk. 61-Pg. 10
County of Nevada, Calif.
2001

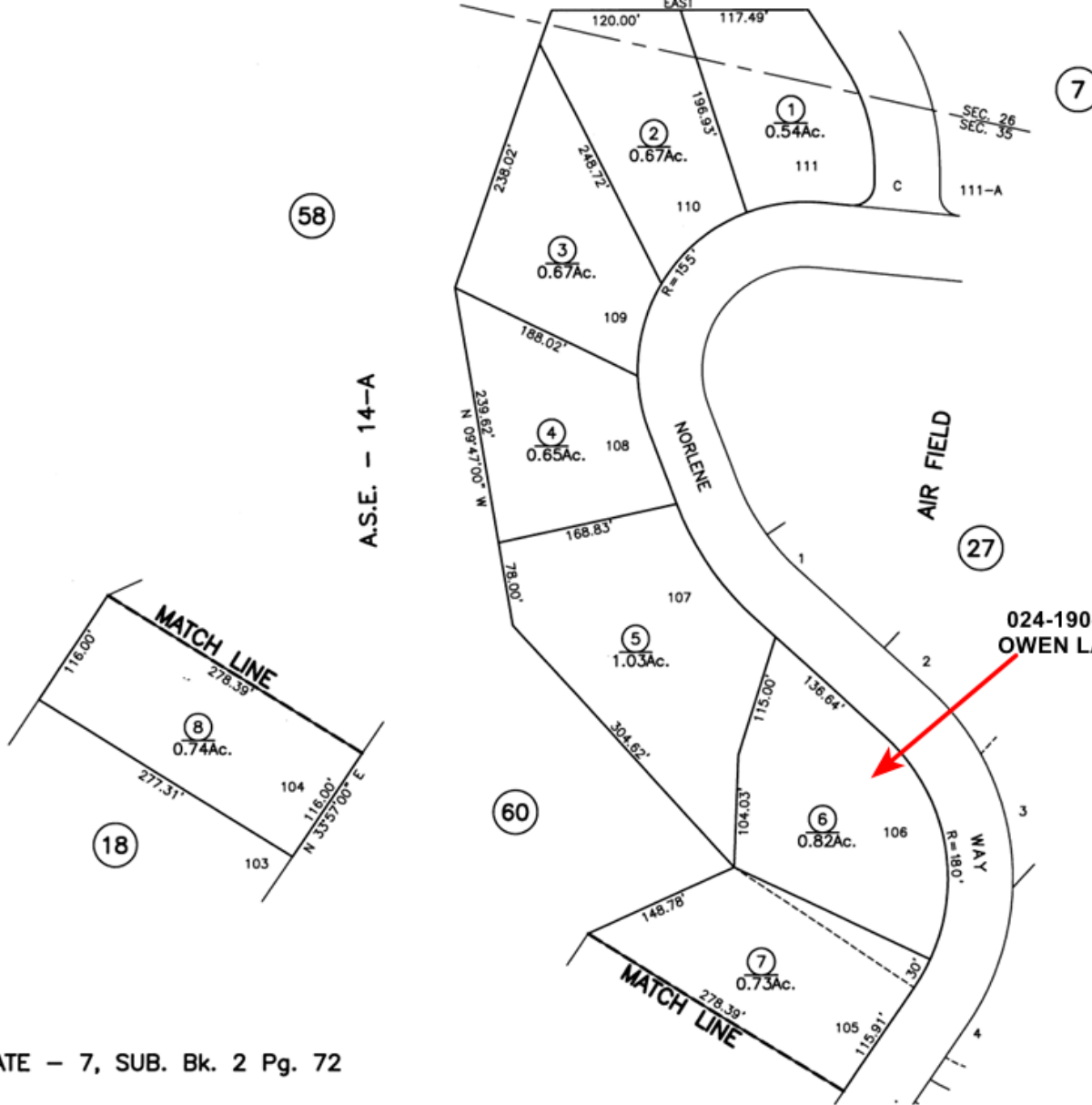
LAST UPDATE 12-30-08

NW 8/01

PTNS. SEC. 26 & 35, T. 15 N., R. 8 E., M.D.B. & M.

Tax Area Code
72-001

24-19
(Fmly. 20-19)



ASSESSOR'S PARCEL MAP
 This map was prepared for assessment purposes only. No liability is assumed for the accuracy of data shown. Assessor's parcels may not comply with local lot-split or building site ordinances.

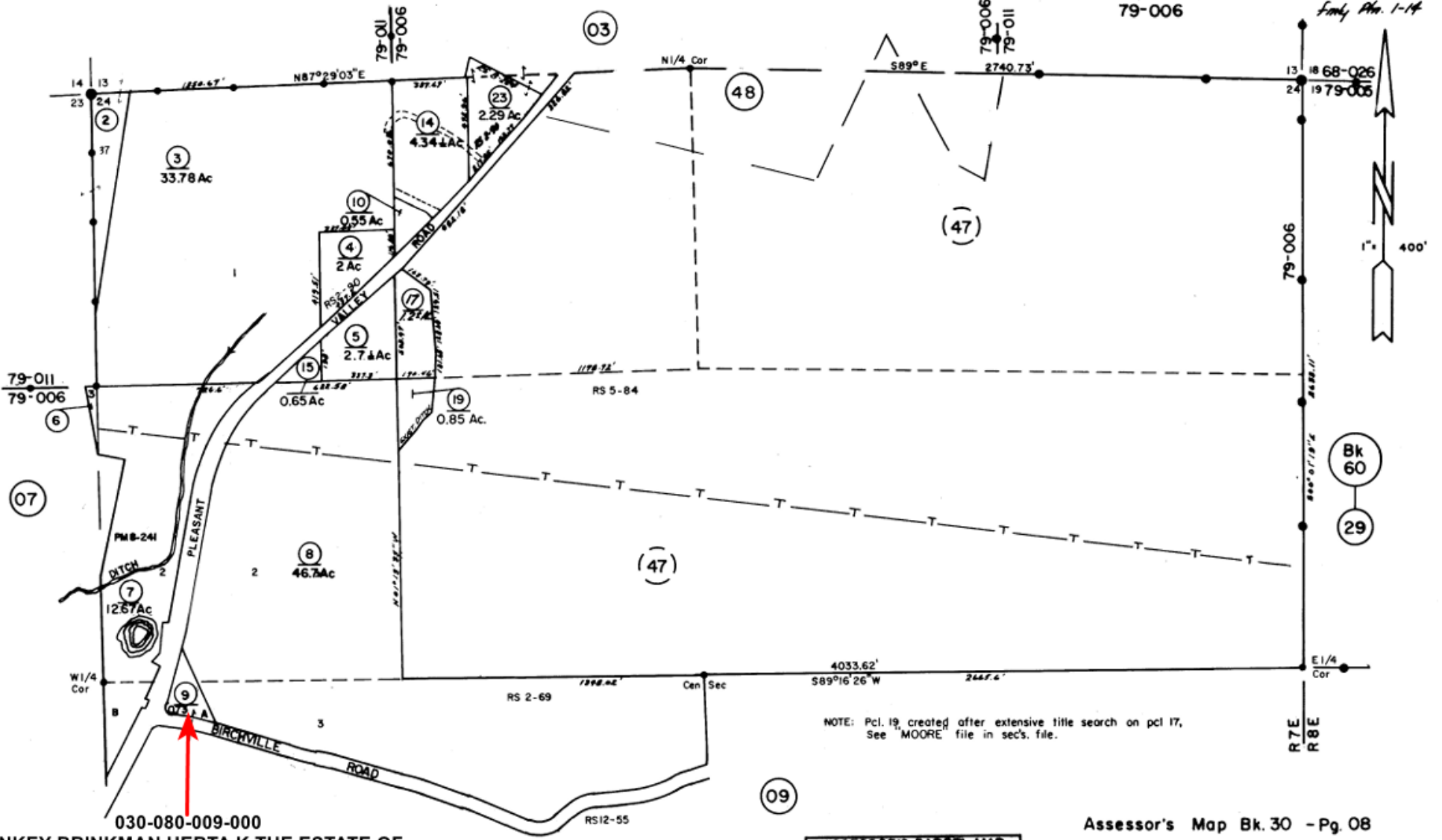
Assessor's Map Bk. 24 - Pg. 19
 County of Nevada, Calif.
 2010

N 1/2 SEC 24 T. 17 N., R. 7 E., M.D.B. & M.

Tax Area Code
79-006

30-08

Family Pl. 1-14



030-080-009-000
PANKEY-BRINKMAN HERTA K THE ESTATE OF

NOTE: Pcl. 19 created after extensive title search on pcl 17, See 'MOORE' file in sec's. file.

ASSESSOR'S PARCEL MAP
This map was prepared for assessment purposes only. No liability is assumed for the accuracy of data shown. Assessor's parcels may not comply with local lot-split or building site subdivisions.

Assessor's Map Bk. 30 - Pg. 08
County of Nevada, Calif.

1974	3-1-84	1-1-89
3-1-76	3-1-77	3-1-87
3-1-75	3-1-80	3-1-89
3-1-74	3-1-82	1-1-97
	3-1-85	1-1-98

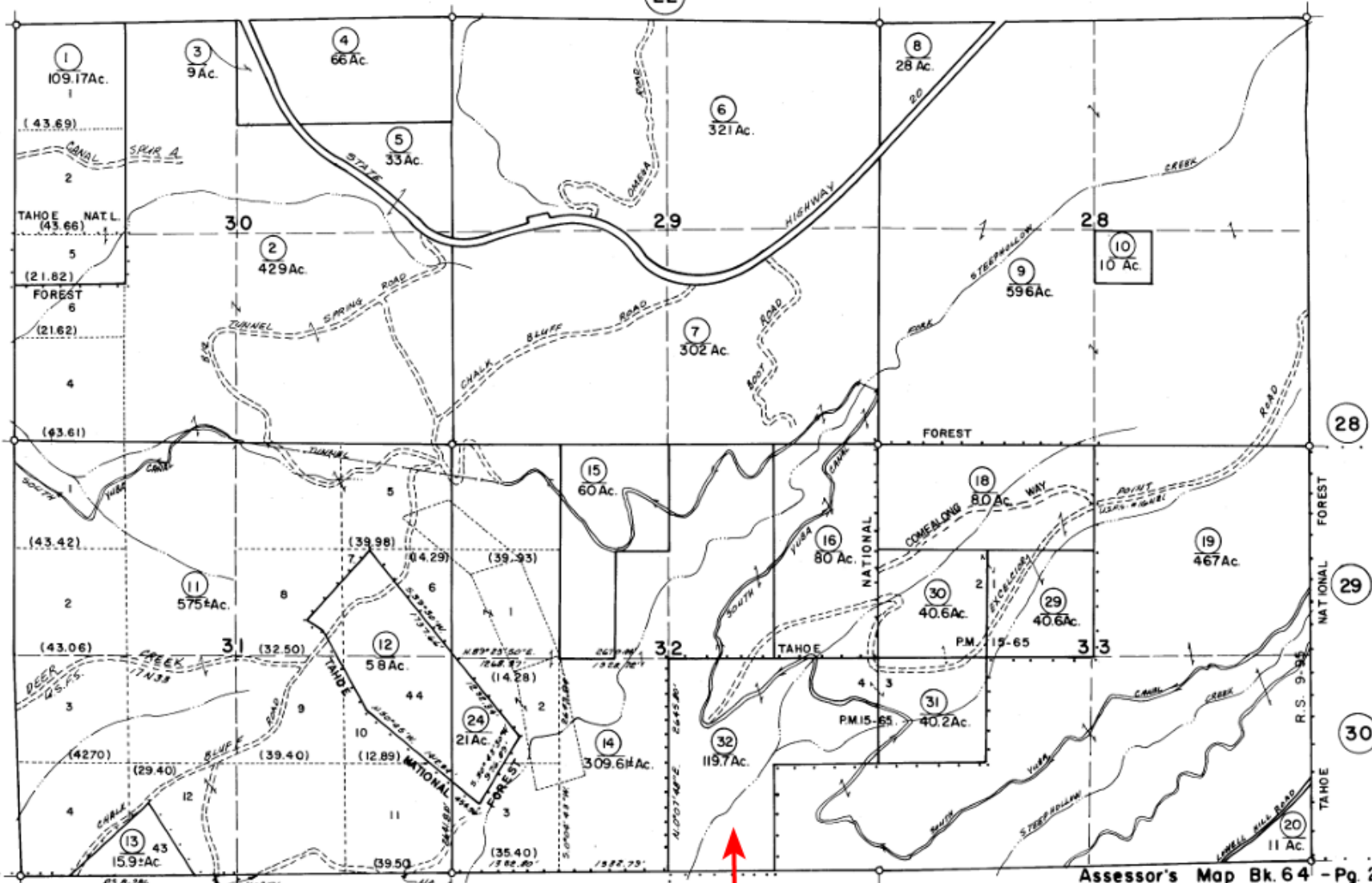
SEC'S 28, 29, 30, 31, 32, & 33, T. 17 N., R. 11 E., M.D.B. & M.

Tax Area Code
68-007

64-27
(FMLY. 14-35)



ASSESSOR'S PARCEL MAP
This map was prepared for assessment purposes only. No liability is assumed for the accuracy of the map. The assessor's office may not comply with local laws or building codes.



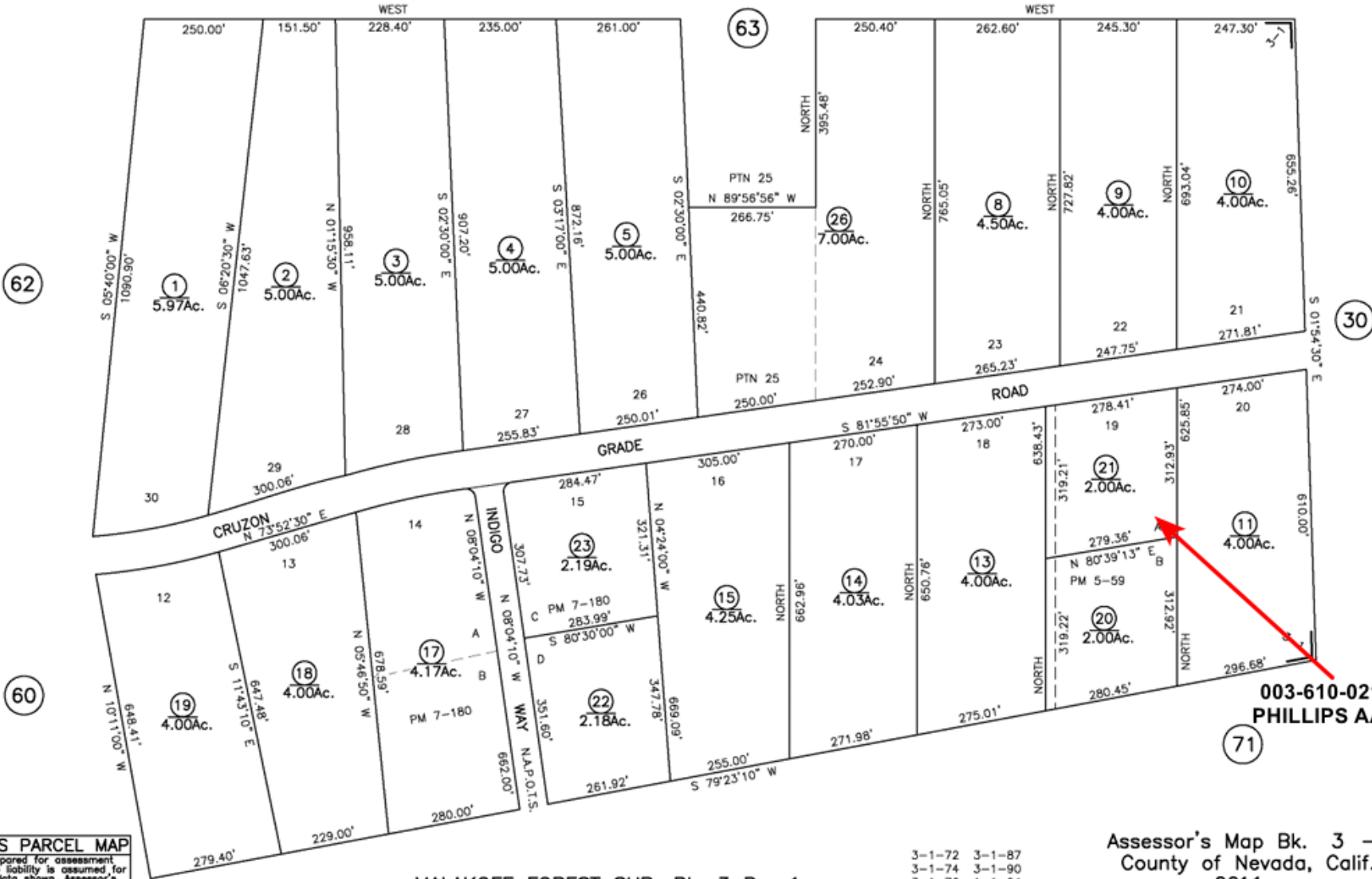
Bk. 14
19

Bk. 65
10

064-270-032-000
PETERSON JAMES

Assessor's Map Bk. 64 - Pg. 27
County of Nevada, Calif.

1962 3-1-88
3-1-82 3-1-85
3-1-84 1-1-94
5-1-85



003-610-021-000
PHILLIPS AARON

71

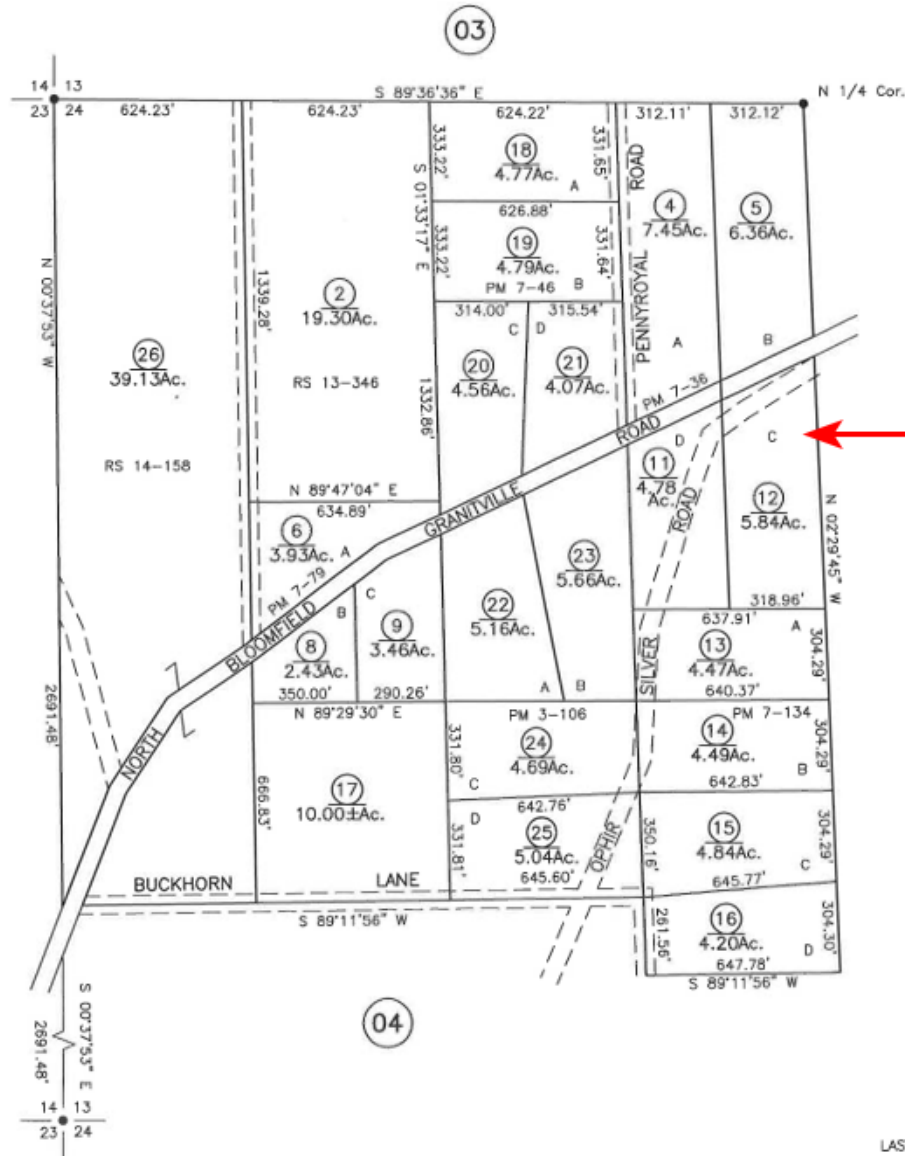
3-1-72	3-1-87
3-1-74	3-1-90
3-1-76	1-1-04
3-1-80	1-1-05
3-1-88	

ASSESSOR'S PARCEL MAP
 This map was prepared for assessment purposes only. No liability is assumed for the accuracy of data shown. Assessor's parcels may not comply with local lot-split or building site ordinances.

PTN. SEC 24, T. 18 N., R. 10 E., M.D.B. & M.

Tax Area Code
79-000

63-17
(Fmly. Ptn. 63-03)



ASSESSOR'S PARCEL MAP
 This map was prepared for assessment purposes only. No liability is assumed for the accuracy of data shown. Assessor's parcels may not comply with local lot-split or building site ordinances.

Assessor's Map Bk. 63 -Pg. 18
 County of Nevada, Calif.
 2010

LAST UPDATED 06-08-16

TM 06/16

PTN. SEC. 31, T. 18 N., R. 16 E., M.D.B. & M.

Tax Area Code
3-001

46-44
(Fmy. Ptn. 16-11)

046-440-001-000
REECE JOHN



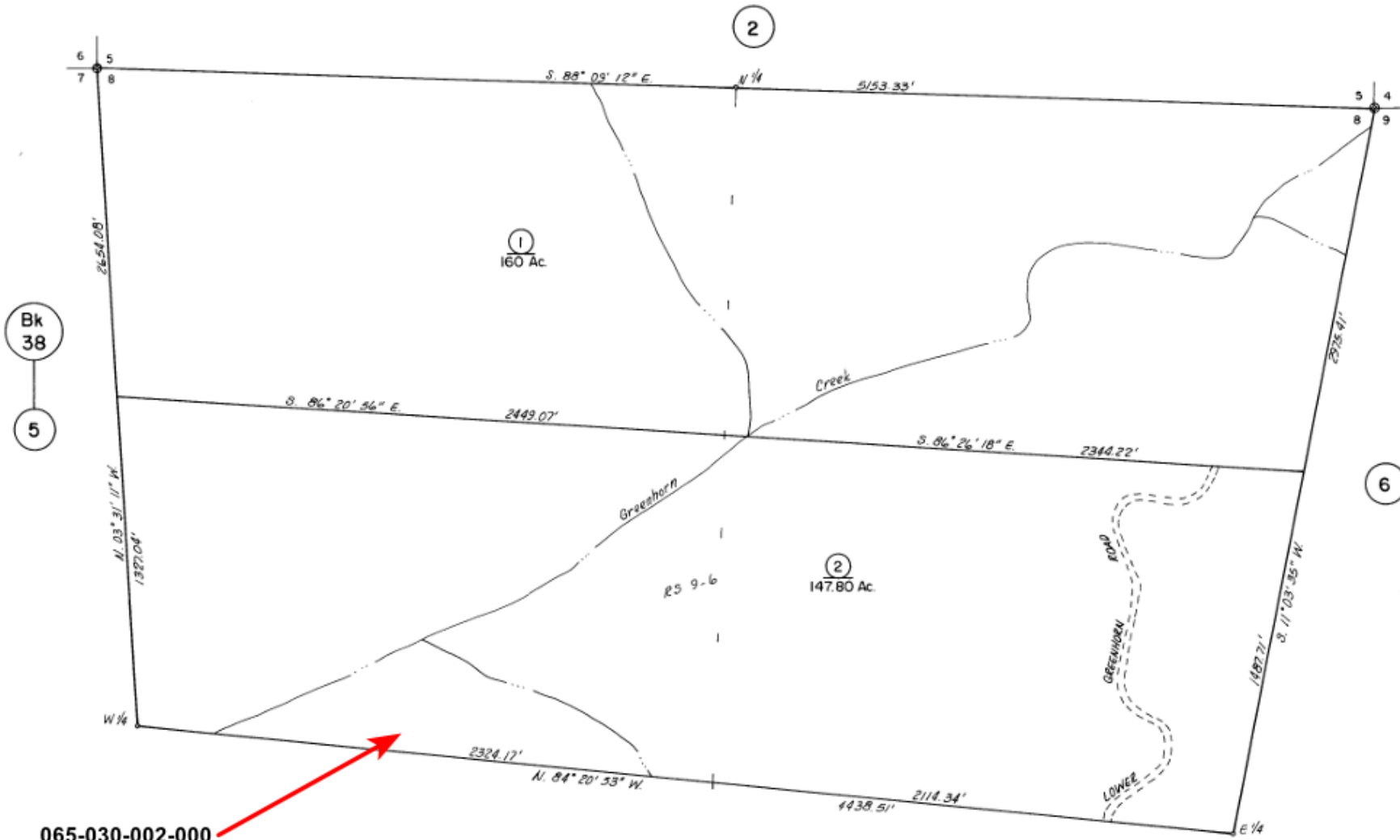
TAHOE DONNER UNIT NO. 6 SUB. Bk. 4, Pg. 34
TRUCKEE INC. R.S. Bk. 11, Pg. 67

ASSESSOR'S PARCEL MAP
 This map was prepared for assessment purposes only. No liability is assumed for the accuracy of data shown. Assessor's parcels may not comply with local lot-split or building site ordinances.

1-1-04

Assessor's Map Bk. 46 -Pg. 44
County of Nevada, Calif.
2003

DLB 9/03



Bk
38
5

065-030-002-000
ROSALES RICARDO SR ETAL

ASSESSOR'S PARCEL MAP
This map was prepared for assessment purposes only. No liability is assumed for the accuracy of data shown. Assessor's parcels may not comply with local lot-split or building site ordinances.

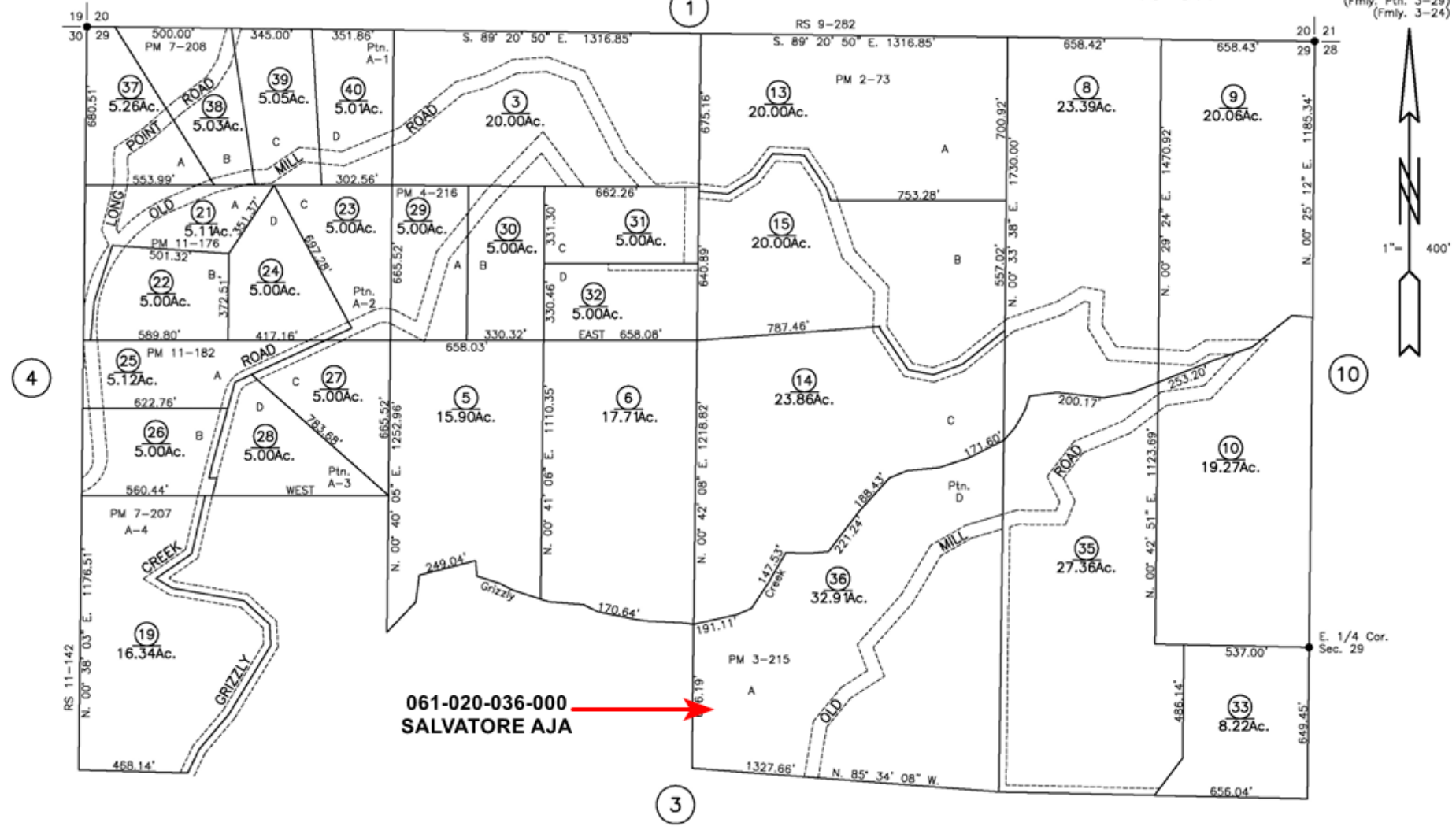
Assessor's Map Bk. 65 - Pg. 03
County of Nevada, Calif.

1983
3-1-84
3-1-72

PTN. SEC. 29, T. 18 N., R. 9 E., M.D.B. & M.

Tax Area Code
79-011

61-02
(Fmly. Ptn. 3-29)
(Fmly. 3-24)



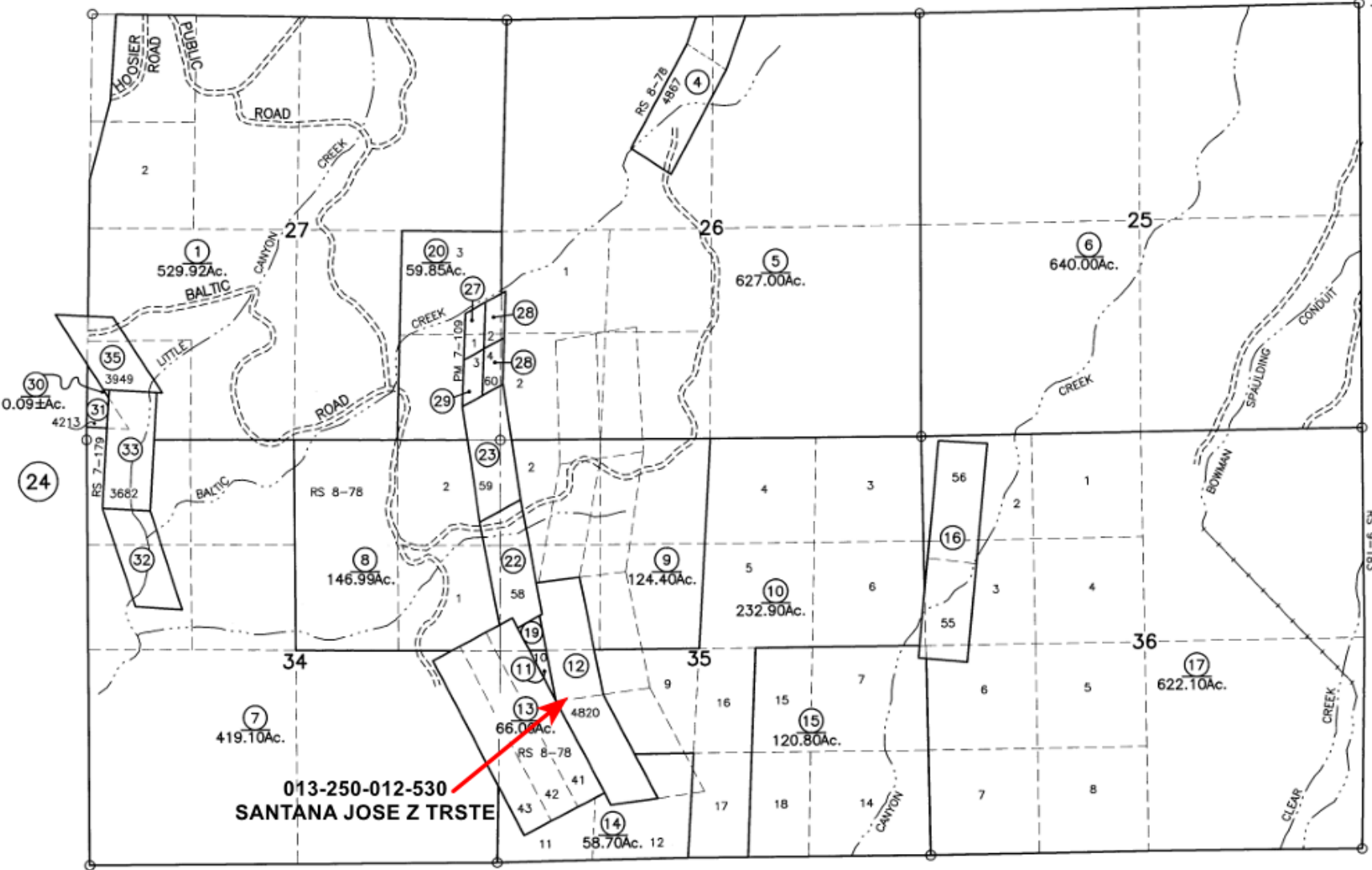
ASSESSOR'S PARCEL MAP
This map was prepared for assessment purposes only. No liability is assumed for the accuracy of data shown. Assessor's parcels may not comply with local lot-split or building site ordinances.

SEC'S 25,26,27,34,35 & 36 T. 18 N., R. 11 E., M.D.B. & M.

(23) Tax Area Code 79-000

13-25

79-002
79-000



- (30) 0.09±Ac.
- (31) 4213
- (32) 3682
- (33) 3949
- (34) 419.10Ac.
- (35) 66.06Ac.
- (36) 58.70Ac.
- (4) 24.10Ac.
- (5) 627.00Ac.
- (6) 640.00Ac.
- (7) 419.10Ac.
- (8) 146.99Ac.
- (9) 124.40Ac.
- (10) 232.90Ac.
- (11) 1.00Ac.
- (12) 49.30Ac.
- (13) 66.06Ac.
- (14) 58.70Ac.
- (15) 120.80Ac.
- (16) 41.32Ac.
- (17) 622.10Ac.
- (18) 17.13Ac.
- (19) 2.27±Ac.
- (20) 59.85Ac.
- (21) 4820
- (22) 17.13Ac.
- (23) 17.41Ac.
- (24) 4820
- (25) 627.00Ac.
- (26) 3.41Ac.
- (27) 3.41Ac.
- (28) 3.41Ac.
- (29) 3.41Ac.
- (30) 0.09±Ac.
- (31) 3949
- (32) 3682
- (33) 3949
- (34) 419.10Ac.
- (35) 66.06Ac.
- (36) 58.70Ac.

013-250-012-530
SANTANA JOSE Z TRSTE

Bk. 64 (13)

3-1-70 3-1-76 3-1-89
 3-1-72 3-1-79 3-1-93
 3-1-73 3-1-80 3-1-97
 3-1-74 3-1-82 1-1-08
 3-1-75 3-1-86

Assessor's Map Bk. 13 -Pg.25
County of Nevada, Calif.
2011

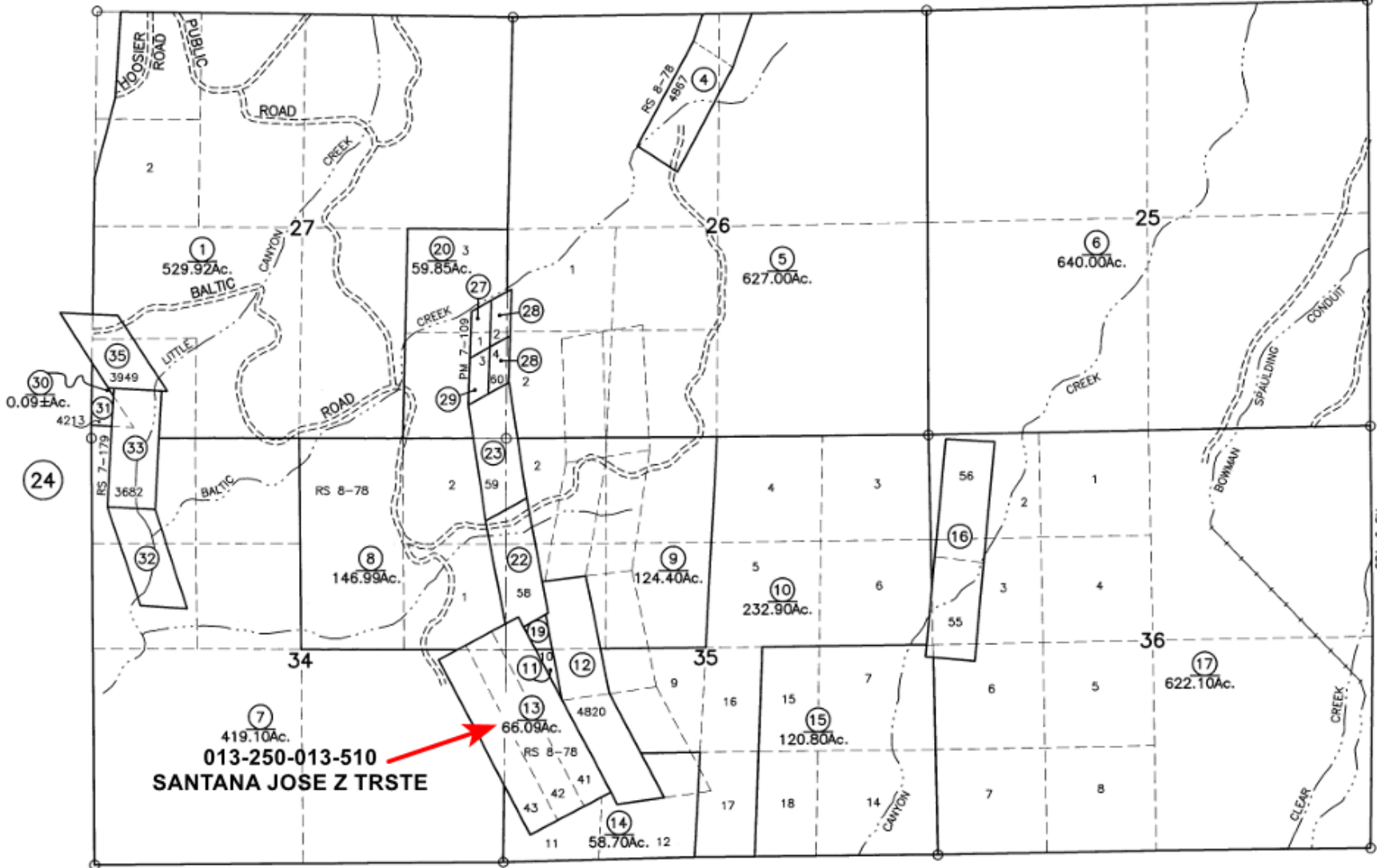
LAST UPDATE: 1-1-08

AAG 7/11

ASSESSOR'S PARCEL MAP
 This map was prepared for assessment purposes only. No liability is assumed for the accuracy of data shown. Assessor's parcels may not comply with local lot-split or building site ordinances.

NOTE: LOCATION OF ROADS AND CREEKS ARE APPROXIMATE

79-002
79-000



(36)

- (4) 24.10Ac.
- (11) 1.00Ac.
- (12) 49.30Ac.
- (16) 41.32Ac.
- (19) 2.27Ac.
- (22) 17.13Ac.
- (23) 17.41Ac.
- (26) 3.41Ac.
- (27) 3.41Ac.
- (28) 3.41Ac.
- (29) 3.41Ac.
- (31) 3.59Ac.
- (32) 16.73Ac.
- (33) 20.66Ac.
- (35) 15.58Ac.

013-250-013-510
SANTANA JOSE Z TRSTE

Bk. 64 (13)

ASSESSOR'S PARCEL MAP
This map was prepared for assessment purposes only. No liability is assumed for the accuracy of data shown. Assessor's parcels may not comply with local lot-split or building site ordinances.

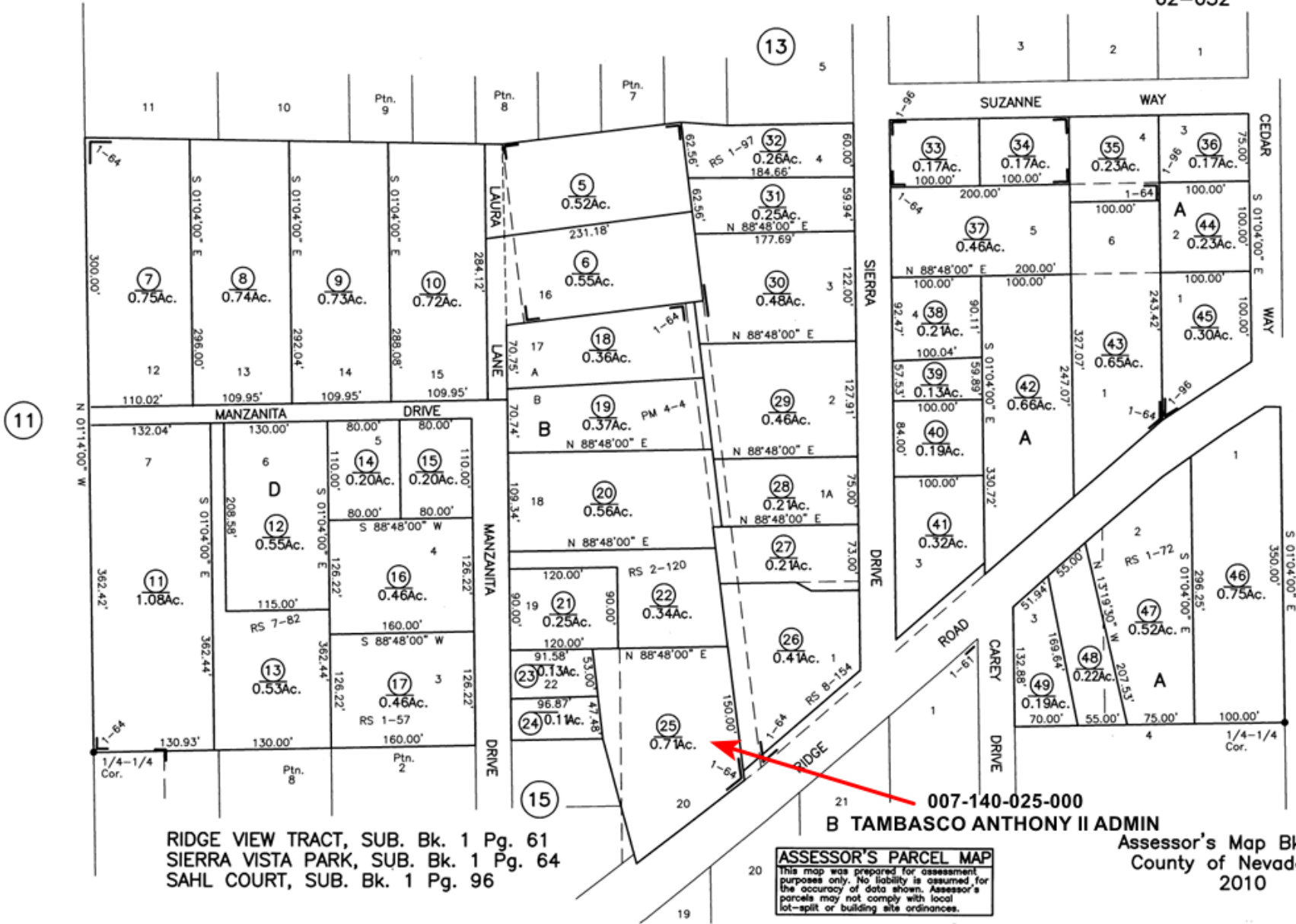
NOTE: LOCATION OF ROADS AND CREEKS ARE APPROXIMATE

- 3-1-70
- 3-1-72
- 3-1-73
- 3-1-74
- 3-1-75
- 3-1-76
- 3-1-79
- 3-1-80
- 3-1-82
- 3-1-86
- 3-1-89
- 3-1-93
- 1-1-97
- 1-1-08

Assessor's Map Bk. 13 -Pg.25
County of Nevada, Calif.
2011

LAST UPDATE: 1-1-08

AAG 7/11



Bk. 8
1

RIDGE VIEW TRACT, SUB. Bk. 1 Pg. 61
SIERRA VISTA PARK, SUB. Bk. 1 Pg. 64
SAHL COURT, SUB. Bk. 1 Pg. 96

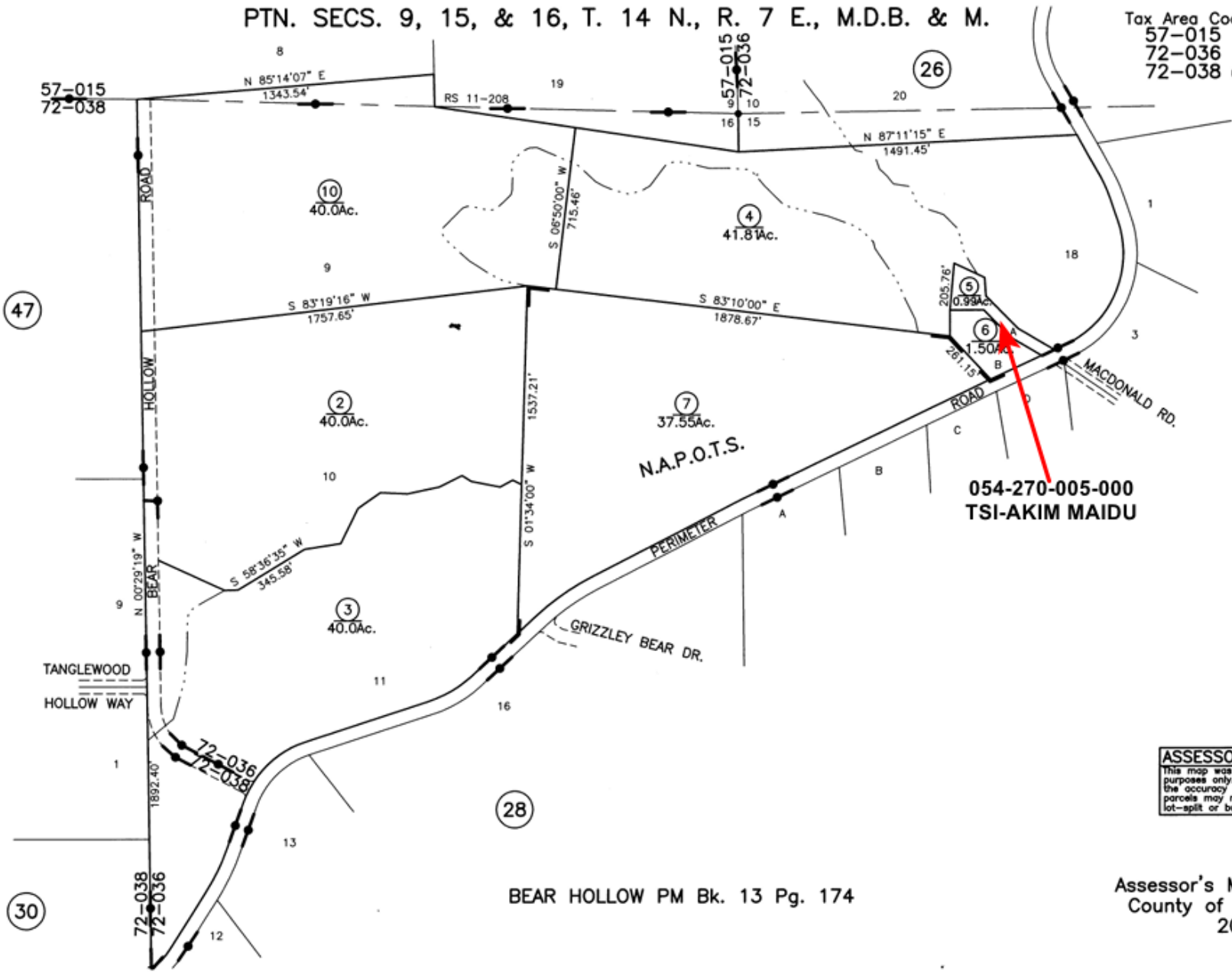
ASSESSOR'S PARCEL MAP
This map was prepared for assessment purposes only. No liability is assumed for the accuracy of data shown. Assessor's parcels may not comply with local lot-split or building site ordinances.

Assessor's Map Bk. 7-Pg.14
County of Nevada, Calif.
2010

PTN. SECS. 9, 15, & 16, T. 14 N., R. 7 E., M.D.B. & M.

Tax Area Code
57-015
72-036
72-038 (ROAD ONLY)

54-27
(Fmly. Ptn. 54-10)
(Fmly. Ptn. 54-15)



ASSESSOR'S PARCEL MAP
 This map was prepared for assessment purposes only. No liability is assumed for the accuracy of data shown. Assessor's parcels may not comply with local lot-split or building site ordinances.

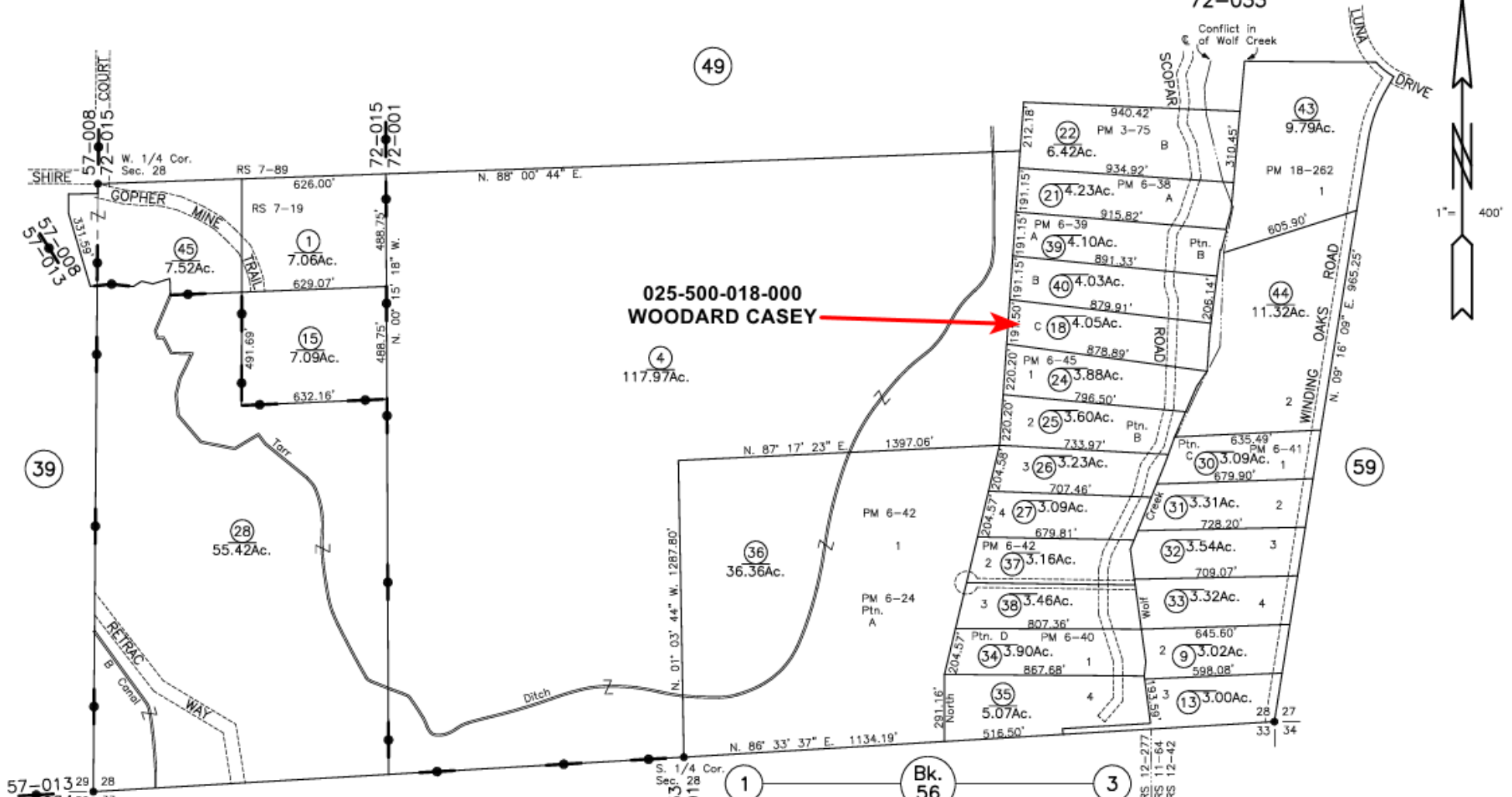
BEAR HOLLOW PM Bk. 13 Pg. 174

Assessor's Map Bk. 54 -Pg.27
County of Nevada, Calif.
2010

PTN. SEC'S 27 & 28 T. 15 N., R. 8 E., M.D.B. & M.

Tax Area Code
72-001
72-015
72-033

25-50
(Fmly. Ptn. 10-34)
(Fmly. Ptn. 22-80)
(Fmly. Ptn. 25-38)



**025-500-018-000
WOODARD CASEY**

ASSESSOR'S PARCEL MAP NOTICE
This map was prepared for assessment purposes only. No liability is assumed for the accuracy of data shown. Assessor's parcels may not comply with local lot-split or building site ordinances. Assessor's block numbers shown in ellipses; parcel numbers are shown in circles. All distances on curved lines are chord measurements.

Assessor's Map Bk. 25 -Pg. 50
County of Nevada, Calif.
2002

1-1-03
1-1-21

LAST UPDATE 3-16-21 EL NW 12/02