



**NEVADA  
COUNTY**  
CALIFORNIA

**Nevada County  
Truckee Library  
Roof  
Specifications**

Located at: 10031 Levone Ave. Truckee, CA. 96161





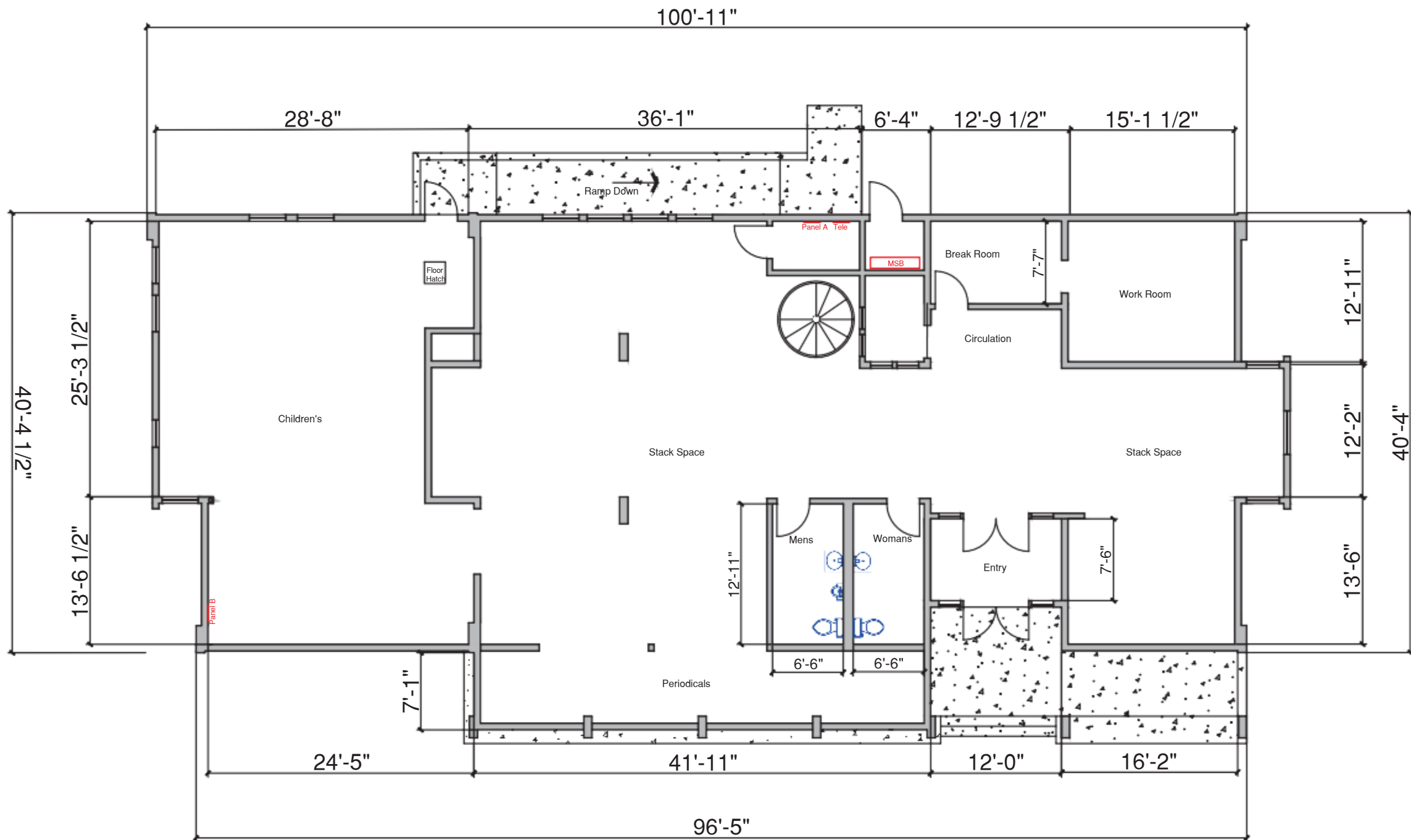
# FLOOR PLAN

No.	Revision/Issue	Date

**Project Address**  
Truckee Library  
10031 Levon Ave.  
Truckee, CA 96161

**Owner Name and Address**  
County of Nevada  
Facilities Management  
10014 N. Bloomfield Rd.  
Nevada City, CA 95959

<b>Drawn By</b> RN	<b>Sheet</b> 1 of 5
<b>Date</b> 5/22	
<b>Scale</b>	



Truckee Library  
Dimensions

## PART 1 GENERAL

### 1.1 SCOPE OF WORK

- A. Furnish and install specified roofing and related components to designated roof areas at Truckee Library.
- B. Work includes:
  - 1. Removal and replacement of designated roofing and materials.
    - a. Remove and replace the existing ice melt by a licensed electrician.
    - b. Remove and replace ice and water shield, underlayment.
    - c. Remove and replace sheet metal.
    - d. Remove chimney stack and housing from roof, install plywood over hole in roof to match existing plywood.
    - e. Remove and replace gutters and downspouts.
  - 2. Installation of the following:
    - a. Self-adhered underlayment.
    - b. Granule surfaced; Cool Roof rated asphalt shingle roofing.
    - c. Associated metal flashing. Edge metal on rake edges will be fabricated from 24-gauge Kynar coated metal.
    - d. Replace existing gutters and downspouts with new gutters and downspouts to match existing size, color, and profile.
    - e. Licensed electrician to re-install ice melt, install Danfoss RX-C roof clips or approved equal, per manufactures instructions.

### 1.2 REFERENCES

- A. ASTM D 225 - Standard Specification for Asphalt Shingles (Organic Felt) Surfaced with Mineral Granules.
- B. ASTM D 226 - Standard Specification for Asphalt-Saturated Organic Felt Used in Roofing and Waterproofing.
- C. ASTM D 3018 - Standard Specification for Class A Shingles Surfaced with Mineral Granules.
- D. ASTM D 3161 - Standard Test Method for Wind-Resistance of Asphalt Shingles (Fan-Induced Method).
- E. ASTM E 108 - Standard Test Methods for Fire Tests of Roof Coverings.

### 1.3 SUBMITTALS

- A. Product Data: Provide manufacturer's printed product information indicating material characteristics, performance criteria, and product limitations.
- B. Manufacturer's Installation Instructions: Provide published instructions that indicate preparation required and installation procedures.

### 1.4 QUALITY ASSURANCE

- A. Contractor shall:

Nevada County  
Truckee Library - 2025 Shingle Roofing Specification

1. Be a Manufacturer Approved Contractor.
  2. Be experienced in shingle roof installation
  3. Be acceptable by County
  4. Have not been in Chapter 7 during the last ten (10) years.
- B. Maintain one copy of manufacturer's application instructions on project site.
- C. Verify that manufacturer's label contains reference to specified ASTM standards.

## 1.5 WARRANTY

- A. Manufacturer's Warranty: Furnish shingle manufacturer's warranty for product(s) of this section as follows:

### ASPHALT FIBER GLASS SHINGLES

1. Owens Corning: Lifetime limited warranty.
- B. Warranty Supplement: Provide manufacturer's supplemental Tru Protection warranty to cover labor and materials in the event of a material defect for the following period after completion of application of shingles:
1. First ten years.

## PART 2 PRODUCTS

### 2.1 MANUFACTURER

- A. Provide products manufactured by Owens Corning Roofing and Asphalt, LLC or District Approved Equal.
- B. Substitutions of ASTM shingles that meet or exceed those specified will be allowed based upon District acceptance.

### 2.2 ASPHALT FIBER GLASS SHINGLES

- A. **Owens Corning TruDefinition Duration Cool Shingles:** Conforming to ASTM D 3018 Type I - Self-Sealing; UL Certification of ASTM D 3462, ASTM D 3161 Class "F" (110-mph)/UL997 Wind Resistance, and UL Class A Fire Resistance; glass fiber mat base, ceramically colored/UV resistant mineral surface granules across entire face of shingle; three-layer laminated four-tab shingle.
1. Color: TBD
  2. Product Attributes: Includes Sure Nail Technology, a woven fabric reinforcing strip in the nailing zone on the shingle's top surface.

## 2.3 SHEET MATERIALS

- A. Underlayment: Grace ice and water shield HT or District Approved Equal.

## 2.4 FLASHING MATERIALS

- A. 24-gauge Kynar coated metal.

## 2.5 ACCESSORIES

- A. Nails: Standard round wire type roofing nails, corrosion resistant; hot dipped zinc coated steel, aluminum, or chromated steel; minimum 3/8-inch head diameter; minimum 11 or 12 gage shank diameter; shank to be of sufficient length to penetrate through roof sheathing or 3/4 inch into solid wood, plywood, or non-veneer wood decking.
- B. Asphalt Roofing Cement: ASTM D 4586, Type I or II.

## 2.6 FLASHING FABRICATION

- A. Form flashing to protect roofing materials from physical damage and shed water.
- B. Form sections square and accurate to profile, in maximum possible lengths, free from distortion or defects detrimental to appearance or performance.
- C. All edge metal on the rake and eave edges will have a minimum 3" face and kick & hem.

# PART 3 EXECUTION

## 3.1 EXAMINATION

- A. Verify existing site conditions.
- B. Verify that roof penetrations and plumbing stacks are in place and flashed to deck surface.
- C. Verify roof openings are correctly framed prior to installing work of this section.
- D. Verify deck surfaces are dry and free of ridges, warps, or voids.

## 3.2 ROOF DECKPREPARATION

- A. Follow shingle manufacturer's recommendations for acceptable roof deck materials.

- B. Broom clean deck surfaces under eave protection and underlayment prior to their application.

### 3.3 INSTALLATION - PROTECTIVE UNDERLAYMENT

- A. Install self-adhesive underlayment over entire roof area.
  - 1. Install according to manufacturer's instructions.
- B. Weather-lap and seal watertight with asphalt roofing cement items projecting through or mounted on roof.

### 3.4 INSTALLATION - METAL FLASHING

- A. Weather-lap joints minimum 2 inches.
- B. Seal work projecting through or mounted on roofing with asphalt roofing cement and make weather tight.
- C. All edge metal on the rake edges will have a minimum 3" face and kick & hem.

### 3.5 INSTALLATION - ASPHALT SHINGLES

- A. Install shingles in accordance with manufacturer's instructions for product type and application specified.

### 3.6 FIELD QUALITYCONTROL

- A. Visual inspection of the Work will be provided by District.

### 3.7 PROTECTIONOF FINISHED WORK

- A. Protect finished work.
- B. Do not permit traffic over finished roof surface.
- C. Remove all dirt and debris from the field of the roof and the gutters. Inspect the building grounds and remove all miscellaneous debris.

END OF SECTION