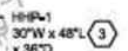
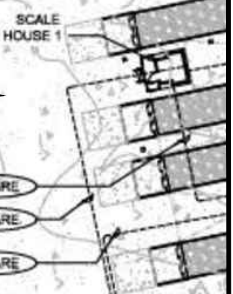


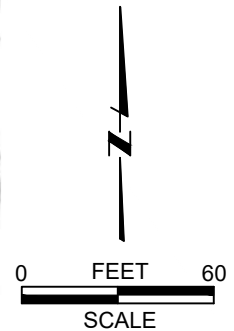
PROPOSED TRANSFER STATION IMPROVEMENTS

PROPOSED WELL LOCATION

WOLF MOUNTAIN ROAD



ADMINISTRATION
BUILDING
(BY OTHERS)



BASE MAP FROM HDR ENGINEERING



PROPOSED PRODUCTION WELL LOCATION

MCCOURTNEY ROAD LANDFILL
NEVADA COUNTY, CALIFORNIA

DRAWN BY:	CWB
CHECKED BY:	MUIR
PROJECT:	4142N.07.01
DATE:	OCTOBER 2021

FIGURE
2